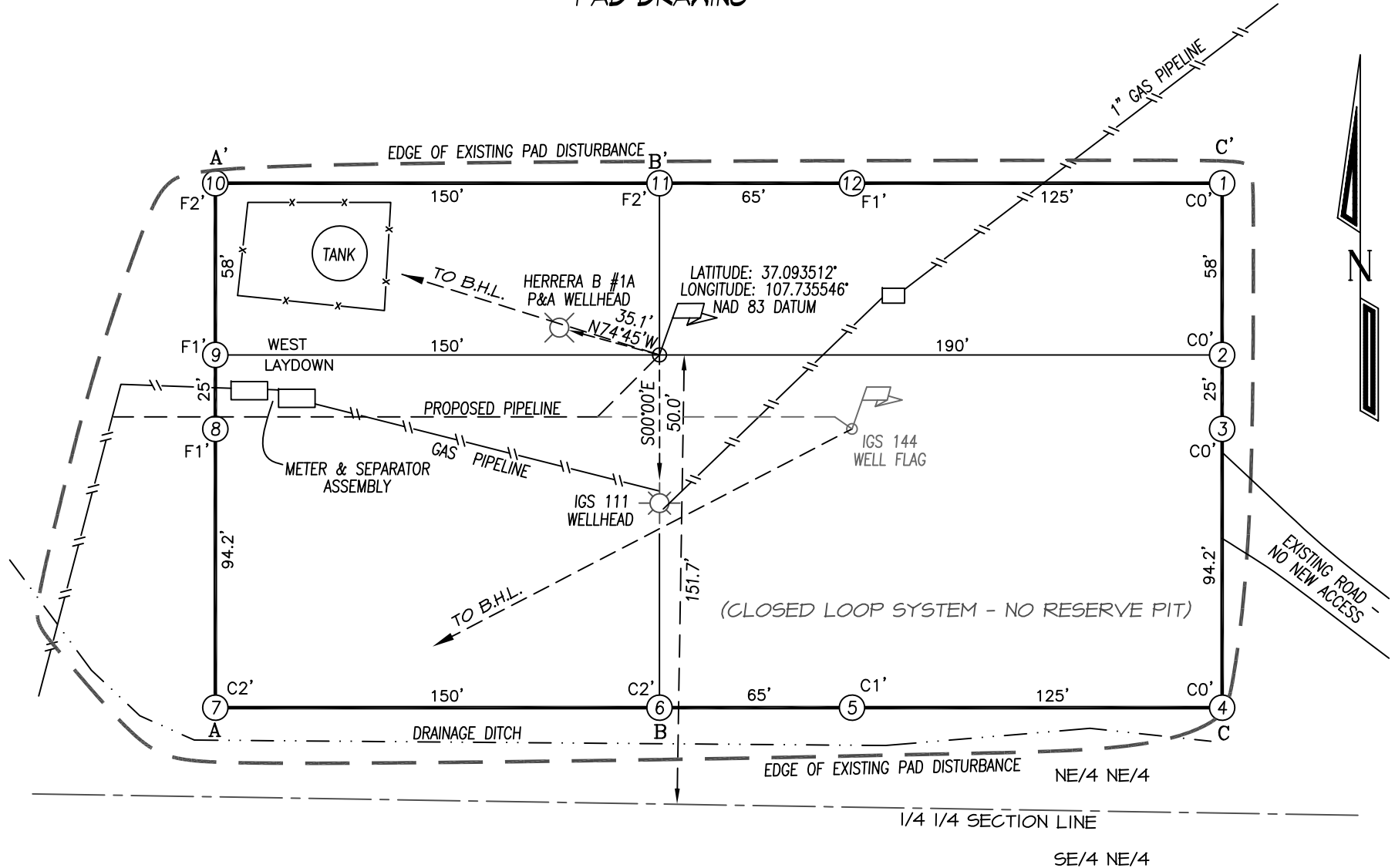


CATAMOUNT ENERGY PARTNERS: IGS 145B
1167' FNL, 1081' FEL, SECTION 20, T-33-N, R-8-W, N.M.P.M.,
LA PLATA COUNTY, CO. GROUND LEVEL ELEVATION: 6752'
PAD DRAWING



TOTAL AREA OF EXISTING
PAD DISTURBANCE
1.79 ACRES

TOTAL AREA REQUIRED FOR
PAD CONSTRUCTION
1.38 ACRES

NO NEW DISTURBANCE