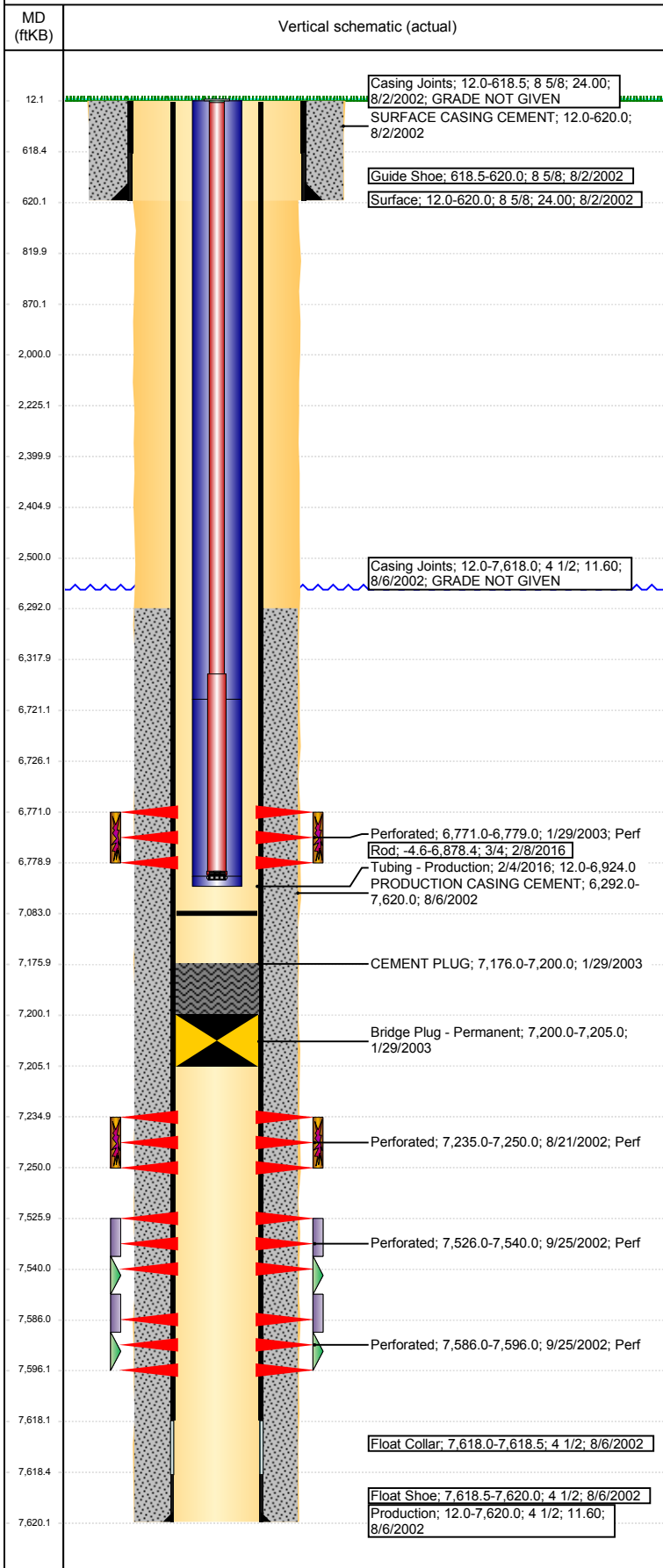


Well Name: CERVI 11-27

VERTICAL - ORIGINAL HOLE, 8/4/2017 8:32:45 AM



Well Header

API 05-123-21002	Business Unit DJ BASIN	District 15	Well Config VERTICAL
Original KB Elevation (ft) 4,872	KB - GL / MSL (ftKB) 12.00	Spud Date 8/1/2002	P & A Date

Comment

Ran pump & rods 1/06; will pull pump & rods. Pulled pump and rods in April of 2009.

Directions To Well

HWY 34 & RD 69, E. 3/10, S. 2 - 2/10, W 9/10, S. INTO.

Congressional Location

Quarter 3 NW	Quarter 4 NW	Section 27	Township 4	Twntshp N/S Dir N	Range 63	Range E/W Dir W
-----------------	-----------------	---------------	---------------	----------------------	-------------	--------------------

Bottom Hole Location

North-South Distance (ft)	From N or S Line	East-West Distance (ft)	From E or W Line
---------------------------	------------------	-------------------------	------------------

Plug Back Total Depths

Date	Depth (ftKB)	Method	Com
8/6/2002	7,577.0	CASING TALLY	Float collar on casing tally
8/21/2002	7,521.0	TAG	Depth logger on CBL
9/24/2002	7,620.0	TAG	CLEANOUT
4/30/2009	7,083.0	TAG	

Wellbore Sections

Section Des	Size (in)	Act Top, MD (ftKB)	Act Btm, MD (ftKB)
SURFACE	12 1/4	12	620
PRODUCTION	7 7/8	620	7,620

Zone Statuses

Zone Name	Status Date	Status	Fluid Type	Job	Prod Method
DAKOTA	1/29/2003	AB		DRILLING/CO...	
J SAND	1/29/2003	AB		DRILLING/CO...	
CODELL	2/10/2003	PR	Gas	DRILLING/CO...	
CODELL	8/1/2006	SI	Gas		
CODELL	6/1/2009	PR		RECONFIGUR...	

Casing Strings

Surface, 620.0ftKB

Casing Description	Run Date	OD (in)	Wt/Len (l...)	Grade	Top, MD (ft...)	MD (ftKB)
Surface	8/2/2002	8 5/8	24.00		12.0	620.0

Production, 7,620.0ftKB

Casing Description	Run Date	OD (in)	Wt/Len (l...)	Grade	Top, MD (ft...)	MD (ftKB)
Production	8/6/2002	4 1/2	11.60		12.0	7,620.0

Cement

Description	Top Depth (ftKB)	Bottom Depth (ftKB)
SURFACE CASING CEMENT	12.0	620.0
PRODUCTION CASING CEMENT	6,292.0	7,620.0
CEMENT PLUG	7,176.0	7,200.0
Balance Plug	6,318.0	6,721.0
Remedial Casing Cement	2,000.0	2,500.0
Cement Plug	2,405.0	2,500.0
Cement Plug	2,225.0	2,400.0
Balance Plug	820.0	870.0
Balance Plug	12.0	820.0

Tubing Strings

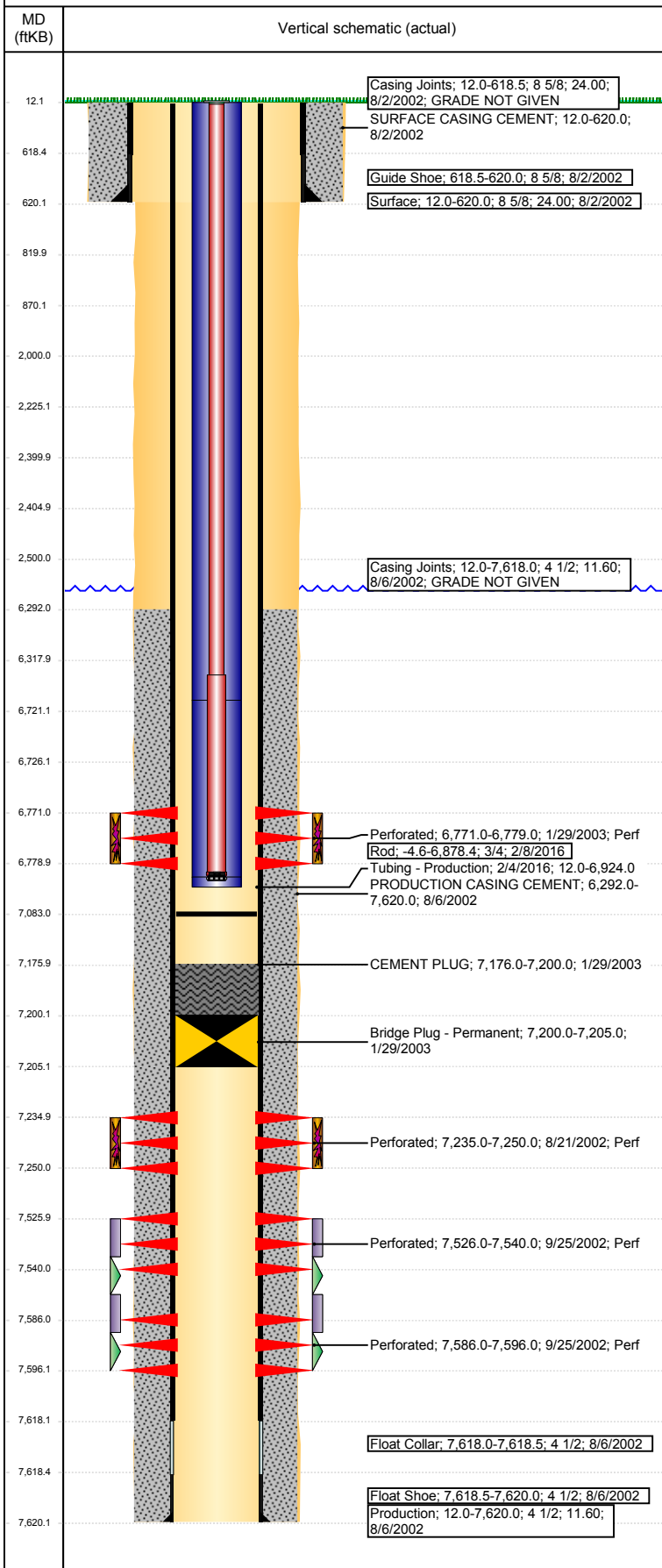
Tubing Description	Run Date	String...	ID (in)	Wt (lb/ft)	Grade	Len (ft)	Set De...
Tubing	1/19/2006						
Tubing - Production	4/30/2009	2 3/8	2.00	4.70	J-55	6,743.34	
Tubing - Production	2/4/2016	2 3/8	2.00	4.70	J-55	6,911.97	

Other In Hole

Run Date	Des	OD (in)	Top (ftKB)	Btm (ftKB)
1/29/2003	Bridge Plug - Permanent	3.99	7,200.0	7,205.0

Well Name: CERVI 11-27

VERTICAL - ORIGINAL HOLE, 8/4/2017 8:32:48 AM



Other In Hole				
Run Date	Des	OD (in)	Top (ftKB)	Btm (ftKB)
6/16/2017	Cast Iron Bridge Plug	3.99	6,721.0	6,726.0
6/16/2017	Cement Retainer	3.99	2,400.0	2,405.0

Logs			
Date	Type	Top, MD (ftKB)	Btm, MD (ftKB)
8/6/2002	TRIPLE COMBO	617.0	7,620.0
8/21/2002	CBL/CCL/GR	6,090.0	7,516.0

Perforation Data					
Linked Zone	Bnch/St g	Sum of Entered Shot Total	Top (ftKB)	Btm (ftKB)	Date
		0	2,400.00	2,400.00	6/16/2017
CODELL, ORIGINAL HOLE		32	6,771.00	6,779.00	1/29/2003
J SAND, ORIGINAL HOLE		60	7,235.00	7,250.00	8/21/2002
DAKOTA, ORIGINAL HOLE		56	7,526.00	7,540.00	9/25/2002
DAKOTA, ORIGINAL HOLE		40	7,586.00	7,596.00	9/25/2002
Total (Sum)		188			

Stimulation Intervals

Start Date 8/22/2002	Primary Job Type DRILLING/COMPLETION - ORIGINAL	
Technical Result	Tech Result Details	Tech Result Note

Comment
Pump in pressure decline throughout job

Start Date 9/26/2002	Primary Job Type DRILLING/COMPLETION - ORIGINAL	
Technical Result	Tech Result Details	Tech Result Note

Comment
ACID JOB

Start Date 10/7/2002	Primary Job Type DRILLING/COMPLETION - ORIGINAL	
Technical Result	Tech Result Details	Tech Result Note

Comment
ACID JOB

Start Date 1/30/2003	Primary Job Type DRILLING/COMPLETION - ORIGINAL	
Technical Result	Tech Result Details	Tech Result Note

Comment