

EXTRACTION OIL & GAS

**Weld County
Sec 7-T4N-R68W
TROT 8E-10-17N**

ORIGINAL WELLBORE

Plan: PROPOSAL 1

Standard Planning Report

23 May, 2017



WELL DETAILS: TROTT 8E-10-17N

+N/-S	+E/-W	Northing	Easting	5035.0	Latitude	Longitude	Slot
0.0	0.0	1361363.27	3128030.04	40° 19' 27.959 N	105° 2' 26.930 W		

SECTION DETAILS

Sec	MD	Inc	Azi	TVD	+N/-S	+E/-W	Dleg	TFace	VSec	Target
1	0.0	0.00	0.00	0.0	0.0	0.0	0.00	0.00	0.0	
2	1000.0	0.00	0.00	1000.0	0.0	0.0	0.00	0.00	0.0	
3	2378.7	27.57	203.85	2326.1	-297.6	-131.6	2.00	203.85	-65.0	
4	4177.9	27.57	203.85	3920.9	-1059.4	-468.2	0.00	0.00	-231.5	
5	5556.6	0.00	0.00	5247.0	-1357.0	-599.8	2.00	180.00	-296.6	
6	5656.6	0.00	0.00	5347.0	-1357.0	-599.8	0.00	0.00	-296.6	
7	6556.6	90.00	89.59	5920.0	-1352.9	-26.8	10.00	89.59	262.3	
8	7756.3	90.00	89.59	5920.0	-1344.2	1172.8	0.00	0.00	1432.5	
9	12547.7	90.00	89.40	5920.0	-1302.0	5964.0	0.00	-90.00	6104.5	

ANNOTATIONS

MD	Inc	Azi	TVD	+N/-S	+E/-W	VSec	Departure	Annotation
1000.0	0.00	0.00	1000.0	0.0	0.0	0.0	0.0	BUILD 2°/100'
2378.7	27.57	203.85	2326.1	-297.6	-131.6	-65.0	325.4	HOLD 27.57° INC
4177.9	27.57	203.85	3920.9	-1059.4	-468.2	-231.5	1158.2	DROP 2°/100'
5556.6	0.00	0.00	5247.0	-1357.0	-599.8	-296.6	1483.6	HOLD VERTICAL
5656.6	0.00	0.00	5347.0	-1357.0	-599.8	-296.6	1483.6	KOP, BUILD 10°/100'
6556.6	90.00	89.59	5920.0	-1352.9	-26.8	262.3	2056.6	LP @ 90° INC
7756.3	90.00	89.59	5920.0	-1344.2	1172.8	1432.5	3256.3	HOLD
12547.7	90.00	89.40	5920.0	-1302.0	5964.0	6104.5	8047.7	TD at 12547.7' MD

DESIGN TARGET DETAILS

Name	TVD	+N/-S	+E/-W	Northing	Easting	40° 19' 14.675 N	105° 2' 11.789 W	Shape
TROTT 17 - LP REV 2	5920.0	-1344.2	1172.8	1360025.16	3129209.77	40° 19' 14.675 N	105° 2' 11.789 W	Point
- plan hits target center								
TROTT 17 - PBHL REV 2	5920.0	-1302.0	5964.0	1360092.19	3134000.71	40° 19' 15.085 N	105° 1' 9.930 W	Point
- plan hits target center								
WAGGENER #8-44	6895.0	-761.8	5756.2	1360631.30	3133790.06	40° 19' 20.424 N	105° 1' 12.612 W	Circle (Radius: 50.0)
- plan misses target center by 1115.7usft at 12345.4usft MD (5920.0 TVD, -1304.1 N, 5761.7 E)								

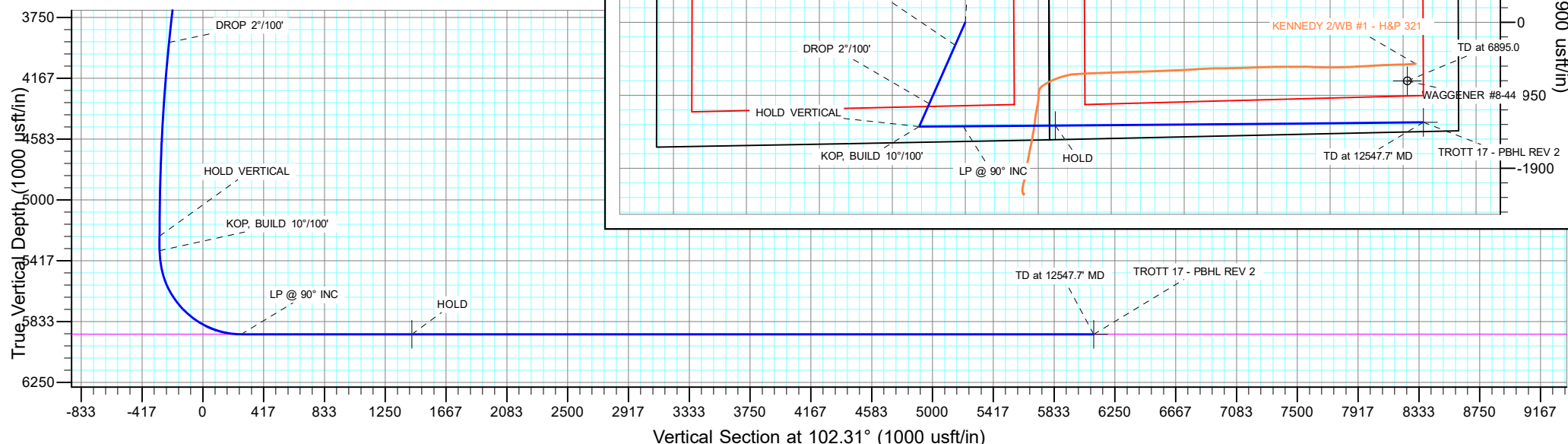
FORMATION TOP DETAILS

TVDPath	MDPath	Formation
2410.0	2473.4	PARKMAN
3010.0	3150.2	SUSSEX
3450.0	3646.6	SHANNON
5920.0	6553.3	NIORARA

PROJECT DETAILS: Weld County

Geodetic System: US State Plane 1983
Datum: North American Datum 1983
Ellipsoid: GRS 1980
Zone: Colorado Northern Zone
System Datum: Mean Sea Level

SHL:
1550' FSL, 1092' FEL
Sec 7-T4N-R68W
LP:
184' FSL, 75' FWL
Sec 8-T4N-R68W
BHL:
120' FSL, 460' FEL
Sec 8-T4N-R68W



Planning Report

Database:	EDT_32Bit_ODBC	Local Co-ordinate Reference:	Well TROTT 8E-10-17N
Company:	EXTRACTION OIL & GAS	TVD Reference:	KB 24' @ 5059.0usft
Project:	Weld County	MD Reference:	KB 24' @ 5059.0usft
Site:	Sec 7-T4N-R68W	North Reference:	True
Well:	TROTT 8E-10-17N	Survey Calculation Method:	Minimum Curvature
Wellbore:	ORIGINAL WELLBORE		
Design:	PROPOSAL 1		

Project	Weld County		
Map System:	US State Plane 1983	System Datum:	Mean Sea Level
Geo Datum:	North American Datum 1983		
Map Zone:	Colorado Northern Zone		

Site		Sec 7-T4N-R68W			
Site Position:		Northing:	1,359,838.99 usft	Latitude:	40° 19' 12.839 N
From:	Lat/Long	Easting:	3,129,136.57 usft	Longitude:	105° 2' 12.746 W
Position Uncertainty:	0.0 usft	Slot Radius:	13.200 in	Grid Convergence:	0.30 °

Well	TROTT 8E-10-17N					
Well Position	+N/-S	1,530.0 usft	Northing:	1,361,363.27 usft	Latitude:	40° 19' 27.959 N
	+E/-W	-1,098.6 usft	Easting:	3,128,030.04 usft	Longitude:	105° 2' 26.930 W
Position Uncertainty	0.0 usft		Wellhead Elevation:		Ground Level:	5,035.0 usft

Wellbore	ORIGINAL WELLBORE				
Magnetics	Model Name	Sample Date	Declination (°)	Dip Angle (°)	Field Strength (nT)
	IGRF2015	4/4/2017	8.37	66.76	52,345.06947995

Design	PROPOSAL 1			
Audit Notes:				
Version:	Phase:	PROTOTYPE	Tie On Depth:	0.0
Vertical Section:	Depth From (TVD) (usft)	+N/-S (usft)	+E/-W (usft)	Direction (°)
	0.0	0.0	0.0	102.31

Plan Survey Tool Program	Date	5/23/2017		
Depth From (usft)	Depth To (usft)	Survey (Wellbore)	Tool Name	Remarks
1	0.0	12,547.7	PROPOSAL 1 (ORIGINAL WELL	MWD OWSG
			OWSG MWD - Standard	

Plan Sections										
Measured Depth (usft)	Inclination (°)	Azimuth (°)	Vertical Depth (usft)	+N/-S (usft)	+E/-W (usft)	Dogleg Rate (°/100ft)	Build Rate (°/100ft)	Turn Rate (°/100ft)	TFO (°)	Target
0.0	0.00	0.00	0.0	0.0	0.0	0.00	0.00	0.00	0.00	
1,000.0	0.00	0.00	1,000.0	0.0	0.0	0.00	0.00	0.00	0.00	
2,378.7	27.57	203.85	2,326.1	-297.6	-131.6	2.00	2.00	0.00	203.85	
4,177.9	27.57	203.85	3,920.9	-1,059.4	-468.2	0.00	0.00	0.00	0.00	
5,556.6	0.00	0.00	5,247.0	-1,357.0	-599.8	2.00	-2.00	0.00	180.00	
5,656.6	0.00	0.00	5,347.0	-1,357.0	-599.8	0.00	0.00	0.00	0.00	
6,556.6	90.00	89.59	5,920.0	-1,352.9	-26.8	10.00	10.00	0.00	89.59	
7,756.3	90.00	89.59	5,920.0	-1,344.2	1,172.8	0.00	0.00	0.00	0.00	TROTT 17 - LP REV :
12,547.7	90.00	89.40	5,920.0	-1,302.0	5,964.0	0.00	0.00	0.00	-90.00	TROTT 17 - PBHL RE

Planning Report

Database:	EDT_32Bit_ODBC	Local Co-ordinate Reference:	Well TROTT 8E-10-17N
Company:	EXTRACTION OIL & GAS	TVD Reference:	KB 24' @ 5059.0usft
Project:	Weld County	MD Reference:	KB 24' @ 5059.0usft
Site:	Sec 7-T4N-R68W	North Reference:	True
Well:	TROTT 8E-10-17N	Survey Calculation Method:	Minimum Curvature
Wellbore:	ORIGINAL WELLBORE		
Design:	PROPOSAL 1		

Planned Survey									
Measured Depth (usft)	Inclination (°)	Azimuth (°)	Vertical Depth (usft)	+N/-S (usft)	+E/-W (usft)	Vertical Section (usft)	Dogleg Rate (°/100ft)	Build Rate (°/100ft)	Turn Rate (°/100ft)
0.0	0.00	0.00	0.0	0.0	0.0	0.0	0.00	0.00	0.00
100.0	0.00	0.00	100.0	0.0	0.0	0.0	0.00	0.00	0.00
200.0	0.00	0.00	200.0	0.0	0.0	0.0	0.00	0.00	0.00
300.0	0.00	0.00	300.0	0.0	0.0	0.0	0.00	0.00	0.00
400.0	0.00	0.00	400.0	0.0	0.0	0.0	0.00	0.00	0.00
500.0	0.00	0.00	500.0	0.0	0.0	0.0	0.00	0.00	0.00
600.0	0.00	0.00	600.0	0.0	0.0	0.0	0.00	0.00	0.00
700.0	0.00	0.00	700.0	0.0	0.0	0.0	0.00	0.00	0.00
800.0	0.00	0.00	800.0	0.0	0.0	0.0	0.00	0.00	0.00
900.0	0.00	0.00	900.0	0.0	0.0	0.0	0.00	0.00	0.00
1,000.0	0.00	0.00	1,000.0	0.0	0.0	0.0	0.00	0.00	0.00
BUILD 2°/100'									
1,100.0	2.00	203.85	1,100.0	-1.6	-0.7	-0.3	2.00	2.00	0.00
1,200.0	4.00	203.85	1,199.8	-6.4	-2.8	-1.4	2.00	2.00	0.00
1,300.0	6.00	203.85	1,299.5	-14.4	-6.3	-3.1	2.00	2.00	0.00
1,400.0	8.00	203.85	1,398.7	-25.5	-11.3	-5.6	2.00	2.00	0.00
1,500.0	10.00	203.85	1,497.5	-39.8	-17.6	-8.7	2.00	2.00	0.00
1,600.0	12.00	203.85	1,595.6	-57.3	-25.3	-12.5	2.00	2.00	0.00
1,700.0	14.00	203.85	1,693.1	-77.8	-34.4	-17.0	2.00	2.00	0.00
1,800.0	16.00	203.85	1,789.6	-101.5	-44.9	-22.2	2.00	2.00	0.00
1,900.0	18.00	203.85	1,885.3	-128.2	-56.7	-28.0	2.00	2.00	0.00
2,000.0	20.00	203.85	1,979.8	-158.0	-69.8	-34.5	2.00	2.00	0.00
2,100.0	22.00	203.85	2,073.2	-190.8	-84.3	-41.7	2.00	2.00	0.00
2,200.0	24.00	203.85	2,165.2	-226.5	-100.1	-49.5	2.00	2.00	0.00
2,300.0	26.00	203.85	2,255.8	-265.2	-117.2	-58.0	2.00	2.00	0.00
2,378.7	27.57	203.85	2,326.1	-297.6	-131.6	-65.0	2.00	2.00	0.00
HOLD 27.57° INC									
2,400.0	27.57	203.85	2,345.0	-306.6	-135.5	-67.0	0.00	0.00	0.00
2,473.4	27.57	203.85	2,410.0	-337.7	-149.3	-73.8	0.00	0.00	0.00
PARKMAN									
2,500.0	27.57	203.85	2,433.6	-349.0	-154.3	-76.3	0.00	0.00	0.00
2,600.0	27.57	203.85	2,522.3	-391.3	-173.0	-85.5	0.00	0.00	0.00
2,700.0	27.57	203.85	2,610.9	-433.7	-191.7	-94.8	0.00	0.00	0.00
2,800.0	27.57	203.85	2,699.5	-476.0	-210.4	-104.0	0.00	0.00	0.00
2,900.0	27.57	203.85	2,788.2	-518.3	-229.1	-113.3	0.00	0.00	0.00
3,000.0	27.57	203.85	2,876.8	-560.7	-247.8	-122.5	0.00	0.00	0.00
3,100.0	27.57	203.85	2,965.5	-603.0	-266.5	-131.8	0.00	0.00	0.00
3,150.2	27.57	203.85	3,010.0	-624.3	-275.9	-136.4	0.00	0.00	0.00
SUSSEX									
3,200.0	27.57	203.85	3,054.1	-645.4	-285.2	-141.0	0.00	0.00	0.00
3,300.0	27.57	203.85	3,142.7	-687.7	-304.0	-150.3	0.00	0.00	0.00
3,400.0	27.57	203.85	3,231.4	-730.0	-322.7	-159.5	0.00	0.00	0.00
3,500.0	27.57	203.85	3,320.0	-772.4	-341.4	-168.8	0.00	0.00	0.00
3,600.0	27.57	203.85	3,408.7	-814.7	-360.1	-178.1	0.00	0.00	0.00
3,646.6	27.57	203.85	3,450.0	-834.5	-368.8	-182.4	0.00	0.00	0.00
SHANNON									
3,700.0	27.57	203.85	3,497.3	-857.0	-378.8	-187.3	0.00	0.00	0.00
3,800.0	27.57	203.85	3,585.9	-899.4	-397.5	-196.6	0.00	0.00	0.00
3,900.0	27.57	203.85	3,674.6	-941.7	-416.2	-205.8	0.00	0.00	0.00
4,000.0	27.57	203.85	3,763.2	-984.1	-435.0	-215.1	0.00	0.00	0.00
4,100.0	27.57	203.85	3,851.9	-1,026.4	-453.7	-224.3	0.00	0.00	0.00
4,177.9	27.57	203.85	3,920.9	-1,059.4	-468.2	-231.5	0.00	0.00	0.00
DROP 2°/100'									

Planning Report

Database:	EDT_32Bit_ODBC	Local Co-ordinate Reference:	Well TROTT 8E-10-17N
Company:	EXTRACTION OIL & GAS	TVD Reference:	KB 24' @ 5059.0usft
Project:	Weld County	MD Reference:	KB 24' @ 5059.0usft
Site:	Sec 7-T4N-R68W	North Reference:	True
Well:	TROTT 8E-10-17N	Survey Calculation Method:	Minimum Curvature
Wellbore:	ORIGINAL WELLBORE		
Design:	PROPOSAL 1		

Planned Survey										
Measured Depth (usft)	Inclination (°)	Azimuth (°)	Vertical Depth (usft)	+N/-S (usft)	+E/-W (usft)	Vertical Section (usft)	Dogleg Rate (°/100ft)	Build Rate (°/100ft)	Turn Rate (°/100ft)	
4,200.0	27.13	203.85	3,940.6	-1,068.7	-472.4	-233.6	2.00	-2.00	0.00	
4,300.0	25.13	203.85	4,030.3	-1,109.0	-490.2	-242.4	2.00	-2.00	0.00	
4,400.0	23.13	203.85	4,121.6	-1,146.3	-506.7	-250.5	2.00	-2.00	0.00	
4,500.0	21.13	203.85	4,214.2	-1,180.8	-521.9	-258.1	2.00	-2.00	0.00	
4,600.0	19.13	203.85	4,308.1	-1,212.3	-535.8	-264.9	2.00	-2.00	0.00	
4,700.0	17.13	203.85	4,403.1	-1,240.7	-548.4	-271.2	2.00	-2.00	0.00	
4,800.0	15.13	203.85	4,499.2	-1,266.2	-559.6	-276.7	2.00	-2.00	0.00	
4,900.0	13.13	203.85	4,596.1	-1,288.5	-569.5	-281.6	2.00	-2.00	0.00	
5,000.0	11.13	203.85	4,693.9	-1,307.7	-578.0	-285.8	2.00	-2.00	0.00	
5,100.0	9.13	203.85	4,792.3	-1,323.8	-585.1	-289.3	2.00	-2.00	0.00	
5,200.0	7.13	203.85	4,891.3	-1,336.7	-590.8	-292.1	2.00	-2.00	0.00	
5,300.0	5.13	203.85	4,990.8	-1,346.5	-595.2	-294.3	2.00	-2.00	0.00	
5,400.0	3.13	203.85	5,090.5	-1,353.1	-598.1	-295.7	2.00	-2.00	0.00	
5,500.0	1.13	203.85	5,190.4	-1,356.5	-599.6	-296.5	2.00	-2.00	0.00	
5,556.6	0.00	0.00	5,247.0	-1,357.0	-599.8	-296.6	2.00	-2.00	0.00	
HOLD VERTICAL										
5,600.0	0.00	0.00	5,290.4	-1,357.0	-599.8	-296.6	0.00	0.00	0.00	
5,656.6	0.00	0.00	5,347.0	-1,357.0	-599.8	-296.6	0.00	0.00	0.00	
KOP, BUILD 10°/100'										
5,700.0	4.34	89.59	5,390.4	-1,357.0	-598.2	-295.0	10.00	10.00	0.00	
5,750.0	9.34	89.59	5,440.0	-1,356.9	-592.2	-289.2	10.00	10.00	0.00	
5,800.0	14.34	89.59	5,488.9	-1,356.9	-581.9	-279.2	10.00	10.00	0.00	
5,850.0	19.34	89.59	5,536.8	-1,356.8	-567.5	-265.0	10.00	10.00	0.00	
5,900.0	24.34	89.59	5,583.2	-1,356.6	-548.9	-246.9	10.00	10.00	0.00	
5,950.0	29.34	89.59	5,627.8	-1,356.5	-526.3	-224.9	10.00	10.00	0.00	
6,000.0	34.34	89.59	5,670.2	-1,356.3	-499.9	-199.2	10.00	10.00	0.00	
6,050.0	39.34	89.59	5,710.2	-1,356.1	-470.0	-169.9	10.00	10.00	0.00	
6,100.0	44.34	89.59	5,747.5	-1,355.8	-436.6	-137.4	10.00	10.00	0.00	
6,150.0	49.34	89.59	5,781.7	-1,355.6	-400.2	-101.8	10.00	10.00	0.00	
6,200.0	54.34	89.59	5,812.5	-1,355.3	-360.9	-63.5	10.00	10.00	0.00	
6,250.0	59.34	89.59	5,839.9	-1,355.0	-319.0	-22.7	10.00	10.00	0.00	
6,300.0	64.34	89.59	5,863.5	-1,354.7	-275.0	20.3	10.00	10.00	0.00	
6,350.0	69.34	89.59	5,883.1	-1,354.3	-229.0	65.1	10.00	10.00	0.00	
6,400.0	74.34	89.59	5,898.7	-1,354.0	-181.5	111.4	10.00	10.00	0.00	
6,450.0	79.34	89.59	5,910.1	-1,353.6	-132.8	158.9	10.00	10.00	0.00	
6,500.0	84.34	89.59	5,917.2	-1,353.3	-83.4	207.2	10.00	10.00	0.00	
6,550.0	89.34	89.59	5,920.0	-1,352.9	-33.5	255.9	10.00	10.00	0.00	
6,553.3	89.34	89.59	5,920.0	-1,352.9	-30.1	259.1	0.00	0.00	0.00	
NIOBRARA										
6,556.6	90.00	89.59	5,920.0	-1,352.9	-26.8	262.3	20.00	20.00	0.00	
LP @ 90° INC										
6,600.0	90.00	89.59	5,920.0	-1,352.5	16.5	304.6	0.00	0.00	0.00	
6,700.0	90.00	89.59	5,920.0	-1,351.8	116.5	402.2	0.00	0.00	0.00	
6,800.0	90.00	89.59	5,920.0	-1,351.1	216.5	499.7	0.00	0.00	0.00	
6,900.0	90.00	89.59	5,920.0	-1,350.4	316.5	597.3	0.00	0.00	0.00	
7,000.0	90.00	89.59	5,920.0	-1,349.7	416.5	694.8	0.00	0.00	0.00	
7,100.0	90.00	89.59	5,920.0	-1,348.9	516.5	792.3	0.00	0.00	0.00	
7,200.0	90.00	89.59	5,920.0	-1,348.2	616.5	889.9	0.00	0.00	0.00	
7,300.0	90.00	89.59	5,920.0	-1,347.5	716.5	987.4	0.00	0.00	0.00	
7,400.0	90.00	89.59	5,920.0	-1,346.8	816.5	1,085.0	0.00	0.00	0.00	
7,500.0	90.00	89.59	5,920.0	-1,346.0	916.5	1,182.5	0.00	0.00	0.00	
7,600.0	90.00	89.59	5,920.0	-1,345.3	1,016.5	1,280.1	0.00	0.00	0.00	
7,700.0	90.00	89.59	5,920.0	-1,344.6	1,116.5	1,377.6	0.00	0.00	0.00	

Planning Report

Database:	EDT_32Bit_ODBC	Local Co-ordinate Reference:	Well TROTT 8E-10-17N
Company:	EXTRACTION OIL & GAS	TVD Reference:	KB 24' @ 5059.0usft
Project:	Weld County	MD Reference:	KB 24' @ 5059.0usft
Site:	Sec 7-T4N-R68W	North Reference:	True
Well:	TROTT 8E-10-17N	Survey Calculation Method:	Minimum Curvature
Wellbore:	ORIGINAL WELLBORE		
Design:	PROPOSAL 1		

Planned Survey									
Measured Depth (usft)	Inclination (°)	Azimuth (°)	Vertical Depth (usft)	+N/-S (usft)	+E/-W (usft)	Vertical Section (usft)	Dogleg Rate (°/100ft)	Build Rate (°/100ft)	Turn Rate (°/100ft)
7,756.3	90.00	89.59	5,920.0	-1,344.2	1,172.8	1,432.5	0.00	0.00	0.00
HOLD									
7,800.0	90.00	89.58	5,920.0	-1,343.9	1,216.5	1,475.1	0.00	0.00	0.00
7,900.0	90.00	89.58	5,920.0	-1,343.2	1,316.5	1,572.7	0.00	0.00	0.00
8,000.0	90.00	89.58	5,920.0	-1,342.4	1,416.5	1,670.2	0.00	0.00	0.00
8,100.0	90.00	89.57	5,920.0	-1,341.7	1,516.5	1,767.8	0.00	0.00	0.00
8,200.0	90.00	89.57	5,920.0	-1,340.9	1,616.5	1,865.3	0.00	0.00	0.00
8,300.0	90.00	89.57	5,920.0	-1,340.2	1,716.5	1,962.8	0.00	0.00	0.00
8,400.0	90.00	89.56	5,920.0	-1,339.4	1,816.5	2,060.4	0.00	0.00	0.00
8,500.0	90.00	89.56	5,920.0	-1,338.6	1,916.5	2,157.9	0.00	0.00	0.00
8,600.0	90.00	89.55	5,920.0	-1,337.9	2,016.5	2,255.4	0.00	0.00	0.00
8,700.0	90.00	89.55	5,920.0	-1,337.1	2,116.5	2,353.0	0.00	0.00	0.00
8,800.0	90.00	89.55	5,920.0	-1,336.3	2,216.5	2,450.5	0.00	0.00	0.00
8,900.0	90.00	89.54	5,920.0	-1,335.5	2,316.5	2,548.0	0.00	0.00	0.00
9,000.0	90.00	89.54	5,920.0	-1,334.7	2,416.5	2,645.5	0.00	0.00	0.00
9,100.0	90.00	89.54	5,920.0	-1,333.9	2,516.5	2,743.1	0.00	0.00	0.00
9,200.0	90.00	89.53	5,920.0	-1,333.1	2,616.5	2,840.6	0.00	0.00	0.00
9,300.0	90.00	89.53	5,920.0	-1,332.3	2,716.5	2,938.1	0.00	0.00	0.00
9,400.0	90.00	89.52	5,920.0	-1,331.4	2,816.5	3,035.6	0.00	0.00	0.00
9,500.0	90.00	89.52	5,920.0	-1,330.6	2,916.5	3,133.1	0.00	0.00	0.00
9,600.0	90.00	89.52	5,920.0	-1,329.8	3,016.4	3,230.7	0.00	0.00	0.00
9,700.0	90.00	89.51	5,920.0	-1,328.9	3,116.4	3,328.2	0.00	0.00	0.00
9,800.0	90.00	89.51	5,920.0	-1,328.1	3,216.4	3,425.7	0.00	0.00	0.00
9,900.0	90.00	89.50	5,920.0	-1,327.2	3,316.4	3,523.2	0.00	0.00	0.00
10,000.0	90.00	89.50	5,920.0	-1,326.3	3,416.4	3,620.7	0.00	0.00	0.00
10,100.0	90.00	89.50	5,920.0	-1,325.4	3,516.4	3,718.2	0.00	0.00	0.00
10,200.0	90.00	89.49	5,920.0	-1,324.6	3,616.4	3,815.7	0.00	0.00	0.00
10,300.0	90.00	89.49	5,920.0	-1,323.7	3,716.4	3,913.2	0.00	0.00	0.00
10,400.0	90.00	89.49	5,920.0	-1,322.8	3,816.4	4,010.7	0.00	0.00	0.00
10,500.0	90.00	89.48	5,920.0	-1,321.9	3,916.4	4,108.2	0.00	0.00	0.00
10,600.0	90.00	89.48	5,920.0	-1,321.0	4,016.4	4,205.7	0.00	0.00	0.00
10,700.0	90.00	89.47	5,920.0	-1,320.1	4,116.4	4,303.2	0.00	0.00	0.00
10,800.0	90.00	89.47	5,920.0	-1,319.1	4,216.4	4,400.7	0.00	0.00	0.00
10,900.0	90.00	89.47	5,920.0	-1,318.2	4,316.4	4,498.2	0.00	0.00	0.00
11,000.0	90.00	89.46	5,920.0	-1,317.3	4,416.4	4,595.7	0.00	0.00	0.00
11,100.0	90.00	89.46	5,920.0	-1,316.3	4,516.4	4,693.2	0.00	0.00	0.00
11,200.0	90.00	89.46	5,920.0	-1,315.4	4,616.4	4,790.7	0.00	0.00	0.00
11,300.0	90.00	89.45	5,920.0	-1,314.4	4,716.4	4,888.2	0.00	0.00	0.00
11,400.0	90.00	89.45	5,920.0	-1,313.5	4,816.4	4,985.7	0.00	0.00	0.00
11,500.0	90.00	89.44	5,920.0	-1,312.5	4,916.4	5,083.2	0.00	0.00	0.00
11,600.0	90.00	89.44	5,920.0	-1,311.5	5,016.4	5,180.7	0.00	0.00	0.00
11,700.0	90.00	89.44	5,920.0	-1,310.6	5,116.4	5,278.2	0.00	0.00	0.00
11,800.0	90.00	89.43	5,920.0	-1,309.6	5,216.4	5,375.6	0.00	0.00	0.00
11,900.0	90.00	89.43	5,920.0	-1,308.6	5,316.3	5,473.1	0.00	0.00	0.00
12,000.0	90.00	89.42	5,920.0	-1,307.6	5,416.3	5,570.6	0.00	0.00	0.00
12,100.0	90.00	89.42	5,920.0	-1,306.6	5,516.3	5,668.1	0.00	0.00	0.00
12,200.0	90.00	89.42	5,920.0	-1,305.6	5,616.3	5,765.6	0.00	0.00	0.00
12,300.0	90.00	89.41	5,920.0	-1,304.5	5,716.3	5,863.0	0.00	0.00	0.00
12,400.0	90.00	89.41	5,920.0	-1,303.5	5,816.3	5,960.5	0.00	0.00	0.00
12,500.0	90.00	89.41	5,920.0	-1,302.5	5,916.3	6,058.0	0.00	0.00	0.00
12,547.7	90.00	89.40	5,920.0	-1,302.0	5,964.0	6,104.5	0.00	0.00	0.00
TD at 12547.7' MD									

Planning Report

Database:	EDT_32Bit_ODBC	Local Co-ordinate Reference:	Well TROTT 8E-10-17N
Company:	EXTRACTION OIL & GAS	TVD Reference:	KB 24' @ 5059.0usft
Project:	Weld County	MD Reference:	KB 24' @ 5059.0usft
Site:	Sec 7-T4N-R68W	North Reference:	True
Well:	TROTT 8E-10-17N	Survey Calculation Method:	Minimum Curvature
Wellbore:	ORIGINAL WELLBORE		
Design:	PROPOSAL 1		

Design Targets									
Target Name									
- hit/miss target	Dip Angle	Dip Dir.	TVD	+N/-S	+E/-W	Northing	Easting	Latitude	Longitude
- Shape	(°)	(°)	(usft)	(usft)	(usft)	(usft)	(usft)		
TROTT 17 - LP REV 2	0.00	0.00	5,920.0	-1,344.2	1,172.8	1,360,025.16	3,129,209.77	40° 19' 14.675 N	105° 2' 11.789 W
- plan hits target center									
- Point									
TROTT 17 - PBHL REV	0.00	0.00	5,920.0	-1,302.0	5,964.0	1,360,092.19	3,134,000.71	40° 19' 15.085 N	105° 1' 9.930 W
- plan hits target center									
- Point									

Formations						
Measured Depth	Vertical Depth					
(usft)	(usft)	Name	Lithology	Dip	Dip Direction	
				(°)	(°)	
2,473.4	2,410.0	PARKMAN				
3,150.2	3,010.0	SUSSEX				
3,646.6	3,450.0	SHANNON				
6,553.3	5,920.0	NIOBRARA				

Plan Annotations					
Measured Depth	Vertical Depth	Local Coordinates			
(usft)	(usft)	+N/-S	+E/-W	Comment	
		(usft)	(usft)		
1,000.0	1,000.0	0.0	0.0	BUILD 2°/100'	
2,378.7	2,326.1	-297.6	-131.6	HOLD 27.57° INC	
4,177.9	3,920.9	-1,059.4	-468.2	DROP 2°/100'	
5,556.6	5,247.0	-1,357.0	-599.8	HOLD VERTICAL	
5,656.6	5,347.0	-1,357.0	-599.8	KOP, BUILD 10°/100'	
6,556.6	5,920.0	-1,352.9	-26.8	LP @ 90° INC	
7,756.3	5,920.0	-1,344.2	1,172.8	HOLD	
12,547.7	5,920.0	-1,302.0	5,964.0	TD at 12547.7' MD	