

EXTRACTION OIL & GAS

**Weld County
Sec 7-T4N-R68W
TROT 8E-10-5N**

ORIGINAL WELLBORE

Plan: PROPOSAL 1

Standard Planning Report

23 May, 2017

WELL DETAILS: TROTT 8E-10-5N

5035.0						
+N/-S	+E/-W	Northing	Easting	Latitude	Longitude	Slot
0.0	0.0	1361363.36	3128047.88	40° 19' 27.959 N	105° 2' 26.700 W	

SECTION DETAILS

Sec	MD	Inc	Azi	TVD	+N-S	+E-W	Dleg	TFace	VSect	Target
1	0.0	0.00	0.00	0.0	0.0	0.0	0.00	0.00	0.0	
2	1200.0	0.00	0.00	1200.0	0.0	0.0	0.00	0.00	0.0	
3	2261.8	21.24	325.76	2237.6	160.8	-109.4	2.00	325.76	-78.7	
4	4377.2	21.24	325.76	4209.4	79.02	-540.6	0.00	0.00	-388.8	
5	5438.9	0.00	0.00	520.0	955.0	-2.00	180.0	-467.5	98.0	
6	5538.9	0.00	0.00	5347.0	955.0	-650.0	0.00	0.00	-467.5	
7	6439.0	90.00	88.89	5920.0	966.1	-77.1	10.00	88.89	98.0	
8	8045.7	90.00	88.89	5920.0	997.1	1529.3	0.00	0.00	1683.7	TROTT 5 - LF
9	12455.4	90.00	88.79	5920.0	1086.3	5938.1	0.00	-90.00	6036.6	TROTT 5 - PH

FORMATION TOP DETAILS

TVDPATH	MDPATH	FORMATION
2410.0	2446.7	PARKMAN
3010.0	3090.4	SUSSEX
3450.0	3562.5	SHANNON
5920.0	6439.0	NIOBRARA

PROJECT DETAILS: Weld County

Geodetic System: US State Plane 1983
Datum: North American Datum 1983
Ellipsoid: GRS 1980
Zone: Colorado Northern Zone

System Datum: Mean Sea Level

SHL:
1550' FSL, 1074' FEL
Sec 7-T4N-R68W

LP"
2516' FSL, 460' FWL
Sec 8-T4N-R68W

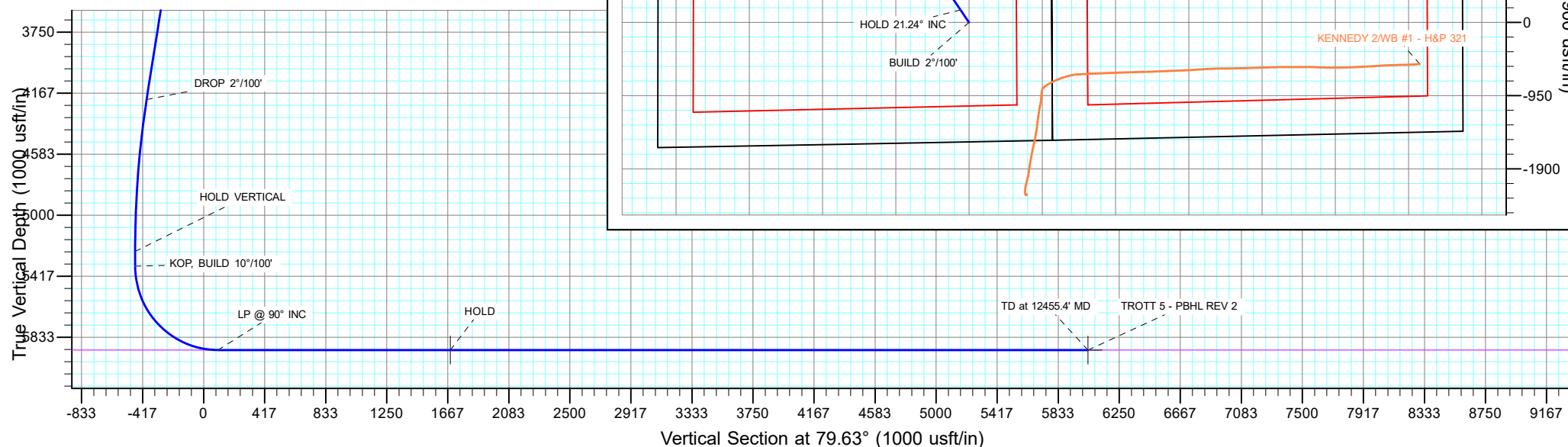
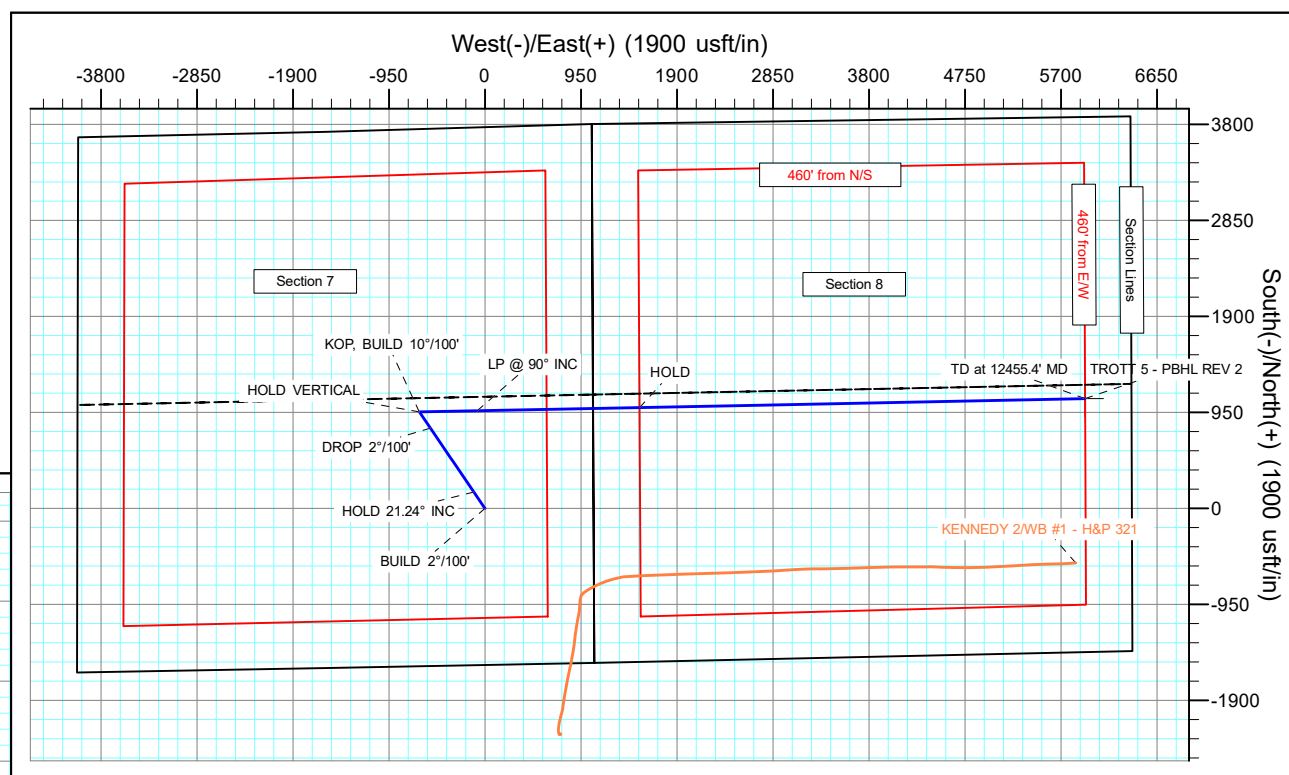
BHL:
2508' FSL, 460' FEL
Sec 8-T4N-R68W

ANNOTATIONS

MD	Inc	Azi	TVD	+N/-S	+E/-W	VSec	Departure	Annotation
1200.0	0.0	0.0	1200.0	0.0	0.0	0.0		BUILD 271/100'
2261.8	21.24	325.76	2237.6	160.8	-109.4	-78.7	194.5	HOLD 21.24' INC
4377.2	21.24	325.76	4209.4	794.2	-540.6	-388.8	960.7	DROP 27/100'
5438.9	0.00	0.00	5247.0	955.0	-650.0	-467.5	1155.2	HOLD VERTICAL
6438.9	0.00	0.00	5347.0	955.0	-650.0	-467.5	1155.2	KOP, BUILD 107/100'
6439.0	90.00	88.89	5920.0	966.1	-77.1	98.0	1728.2	LP @ 90° INC
8000.7	90.00	88.89	9520.0	952.0	153.3	16.7	333.9	HOLD
12455.4	90.00	88.79	5920.0	1086.3	5938.1	6036.6	7344.6	TD @ 12455.4' MD

DESIGN TARGET DETAILS

TROTT 5 - LP REV :	Name	TVD	+N/-S	+E/-W	Northing	Easting	Latitude	Longitude	Shape
TROTT 5 - PBHL RE	TROTT 5 - LP REV 2	5920.0	997.1	1529.3	1362368.39	3129571.97	40° 19' 37.812 N	105° 2' 6.954 W	Point
	- plan hits target center								
	TROTT 5 - PBHL REV 2	5920.0	1086.3	5938.1	1362480.41	3133980.24	40° 19' 38.687 N	105° 1' 10.027 W	Point
	- plan hits target center								



Planning Report

Database:	EDT_32Bit_ODBC	Local Co-ordinate Reference:	Well TROTT 8E-10-5N
Company:	EXTRACTION OIL & GAS	TVD Reference:	KB 24' @ 5059.0usft
Project:	Weld County	MD Reference:	KB 24' @ 5059.0usft
Site:	Sec 7-T4N-R68W	North Reference:	True
Well:	TROTT 8E-10-5N	Survey Calculation Method:	Minimum Curvature
Wellbore:	ORIGINAL WELLBORE		
Design:	PROPOSAL 1		

Project	Weld County		
Map System:	US State Plane 1983	System Datum:	Mean Sea Level
Geo Datum:	North American Datum 1983		
Map Zone:	Colorado Northern Zone		

Site		Sec 7-T4N-R68W			
Site Position:		Northing:	1,359,838.99 usft	Latitude:	40° 19' 12.839 N
From:	Lat/Long	Easting:	3,129,136.57 usft	Longitude:	105° 2' 12.746 W
Position Uncertainty:	0.0 usft	Slot Radius:	13.200 in	Grid Convergence:	0.30 °

Well	TROTT 8E-10-5N					
Well Position	+N/-S	1,530.0 usft	Northing:	1,361,363.36 usft	Latitude:	40° 19' 27.959 N
	+E/-W	-1,080.7 usft	Easting:	3,128,047.88 usft	Longitude:	105° 2' 26.700 W
Position Uncertainty		0.0 usft	Wellhead Elevation:		Ground Level:	5,035.0 usft

Wellbore	ORIGINAL WELLBORE				
Magnetics	Model Name	Sample Date	Declination (°)	Dip Angle (°)	Field Strength (nT)
	IGRF2015	4/4/2017	8.37	66.76	52,345.07634076

Design	PROPOSAL 1			
Audit Notes:				
Version:	Phase:	PROTOTYPE	Tie On Depth:	0.0
Vertical Section:	Depth From (TVD) (usft)	+N/-S (usft)	+E/-W (usft)	Direction (°)
	0.0	0.0	0.0	79.63

Plan Survey Tool Program			Date	5/23/2017	
Depth From (usft)	Depth To (usft)	Survey (Wellbore)	Tool Name	Remarks	
1	0.0	12,455.4	PROPOSAL 1 (ORIGINAL WELL	MWD OWSG	
			OWSG MWD - Standard		

Plan Sections										
Measured Depth (usft)	Inclination (°)	Azimuth (°)	Vertical Depth (usft)	+N/-S (usft)	+E/-W (usft)	Dogleg Rate (°/100ft)	Build Rate (°/100ft)	Turn Rate (°/100ft)	TFO (°)	Target
0.0	0.00	0.00	0.0	0.0	0.0	0.00	0.00	0.00	0.00	
1,200.0	0.00	0.00	1,200.0	0.0	0.0	0.00	0.00	0.00	0.00	
2,261.8	21.24	325.76	2,237.6	160.8	-109.4	2.00	2.00	0.00	325.76	
4,377.2	21.24	325.76	4,209.4	794.2	-540.6	0.00	0.00	0.00	0.00	
5,438.9	0.00	0.00	5,247.0	955.0	-650.0	2.00	-2.00	0.00	180.00	
5,538.9	0.00	0.00	5,347.0	955.0	-650.0	0.00	0.00	0.00	0.00	
6,439.0	90.00	88.89	5,920.0	966.1	-77.1	10.00	10.00	0.00	88.89	
8,045.7	90.00	88.89	5,920.0	997.1	1,529.3	0.00	0.00	0.00	0.00	TROTT 5 - LP REV 2
12,455.4	90.00	88.79	5,920.0	1,086.3	5,938.1	0.00	0.00	0.00	-90.00	TROTT 5 - PBHL REV 2

Planning Report

Database:	EDT_32Bit_ODBC	Local Co-ordinate Reference:	Well TROTT 8E-10-5N
Company:	EXTRACTION OIL & GAS	TVD Reference:	KB 24' @ 5059.0usft
Project:	Weld County	MD Reference:	KB 24' @ 5059.0usft
Site:	Sec 7-T4N-R68W	North Reference:	True
Well:	TROTT 8E-10-5N	Survey Calculation Method:	Minimum Curvature
Wellbore:	ORIGINAL WELLBORE		
Design:	PROPOSAL 1		

Planned Survey									
Measured Depth (usft)	Inclination (°)	Azimuth (°)	Vertical Depth (usft)	+N/-S (usft)	+E/-W (usft)	Vertical Section (usft)	Dogleg Rate (°/100ft)	Build Rate (°/100ft)	Turn Rate (°/100ft)
0.0	0.00	0.00	0.0	0.0	0.0	0.0	0.00	0.00	0.00
100.0	0.00	0.00	100.0	0.0	0.0	0.0	0.00	0.00	0.00
200.0	0.00	0.00	200.0	0.0	0.0	0.0	0.00	0.00	0.00
300.0	0.00	0.00	300.0	0.0	0.0	0.0	0.00	0.00	0.00
400.0	0.00	0.00	400.0	0.0	0.0	0.0	0.00	0.00	0.00
500.0	0.00	0.00	500.0	0.0	0.0	0.0	0.00	0.00	0.00
600.0	0.00	0.00	600.0	0.0	0.0	0.0	0.00	0.00	0.00
700.0	0.00	0.00	700.0	0.0	0.0	0.0	0.00	0.00	0.00
800.0	0.00	0.00	800.0	0.0	0.0	0.0	0.00	0.00	0.00
900.0	0.00	0.00	900.0	0.0	0.0	0.0	0.00	0.00	0.00
1,000.0	0.00	0.00	1,000.0	0.0	0.0	0.0	0.00	0.00	0.00
1,100.0	0.00	0.00	1,100.0	0.0	0.0	0.0	0.00	0.00	0.00
1,200.0	0.00	0.00	1,200.0	0.0	0.0	0.0	0.00	0.00	0.00
BUILD 2°/100'									
1,300.0	2.00	325.76	1,300.0	1.4	-1.0	-0.7	2.00	2.00	0.00
1,400.0	4.00	325.76	1,399.8	5.8	-3.9	-2.8	2.00	2.00	0.00
1,500.0	6.00	325.76	1,499.5	13.0	-8.8	-6.4	2.00	2.00	0.00
1,600.0	8.00	325.76	1,598.7	23.0	-15.7	-11.3	2.00	2.00	0.00
1,700.0	10.00	325.76	1,697.5	36.0	-24.5	-17.6	2.00	2.00	0.00
1,800.0	12.00	325.76	1,795.6	51.8	-35.2	-25.3	2.00	2.00	0.00
1,900.0	14.00	325.76	1,893.1	70.3	-47.9	-34.4	2.00	2.00	0.00
2,000.0	16.00	325.76	1,989.6	91.7	-62.4	-44.9	2.00	2.00	0.00
2,100.0	18.00	325.76	2,085.3	115.9	-78.9	-56.7	2.00	2.00	0.00
2,200.0	20.00	325.76	2,179.8	142.8	-97.2	-69.9	2.00	2.00	0.00
2,261.8	21.24	325.76	2,237.6	160.8	-109.4	-78.7	2.00	2.00	0.00
HOLD 21.24° INC									
2,300.0	21.24	325.76	2,273.3	172.3	-117.2	-84.3	0.00	0.00	0.00
2,400.0	21.24	325.76	2,366.5	202.2	-137.6	-99.0	0.00	0.00	0.00
2,446.7	21.24	325.76	2,410.0	216.2	-147.1	-105.8	0.00	0.00	0.00
PARKMAN									
2,500.0	21.24	325.76	2,459.7	232.1	-158.0	-113.6	0.00	0.00	0.00
2,600.0	21.24	325.76	2,552.9	262.1	-178.4	-128.3	0.00	0.00	0.00
2,700.0	21.24	325.76	2,646.1	292.0	-198.8	-143.0	0.00	0.00	0.00
2,800.0	21.24	325.76	2,739.3	322.0	-219.1	-157.6	0.00	0.00	0.00
2,900.0	21.24	325.76	2,832.5	351.9	-239.5	-172.3	0.00	0.00	0.00
3,000.0	21.24	325.76	2,925.7	381.8	-259.9	-186.9	0.00	0.00	0.00
3,090.4	21.24	325.76	3,010.0	408.9	-278.3	-200.2	0.00	0.00	0.00
SUSSEX									
3,100.0	21.24	325.76	3,018.9	411.8	-280.3	-201.6	0.00	0.00	0.00
3,200.0	21.24	325.76	3,112.2	441.7	-300.7	-216.3	0.00	0.00	0.00
3,300.0	21.24	325.76	3,205.4	471.7	-321.0	-230.9	0.00	0.00	0.00
3,400.0	21.24	325.76	3,298.6	501.6	-341.4	-245.6	0.00	0.00	0.00
3,500.0	21.24	325.76	3,391.8	531.6	-361.8	-260.2	0.00	0.00	0.00
3,562.5	21.24	325.76	3,450.0	550.3	-374.5	-269.4	0.00	0.00	0.00
SHANNON									
3,600.0	21.24	325.76	3,485.0	561.5	-382.2	-274.9	0.00	0.00	0.00
3,700.0	21.24	325.76	3,578.2	591.4	-402.6	-289.5	0.00	0.00	0.00
3,800.0	21.24	325.76	3,671.4	621.4	-422.9	-304.2	0.00	0.00	0.00
3,900.0	21.24	325.76	3,764.6	651.3	-443.3	-318.9	0.00	0.00	0.00
4,000.0	21.24	325.76	3,857.8	681.3	-463.7	-333.5	0.00	0.00	0.00
4,100.0	21.24	325.76	3,951.0	711.2	-484.1	-348.2	0.00	0.00	0.00
4,200.0	21.24	325.76	4,044.3	741.2	-504.5	-362.8	0.00	0.00	0.00
4,300.0	21.24	325.76	4,137.5	771.1	-524.8	-377.5	0.00	0.00	0.00

Planning Report

Database:	EDT_32Bit_ODBC	Local Co-ordinate Reference:	Well TROTT 8E-10-5N
Company:	EXTRACTION OIL & GAS	TVD Reference:	KB 24' @ 5059.0usft
Project:	Weld County	MD Reference:	KB 24' @ 5059.0usft
Site:	Sec 7-T4N-R68W	North Reference:	True
Well:	TROTT 8E-10-5N	Survey Calculation Method:	Minimum Curvature
Wellbore:	ORIGINAL WELLBORE		
Design:	PROPOSAL 1		

Planned Survey									
Measured Depth (usft)	Inclination (°)	Azimuth (°)	Vertical Depth (usft)	+N/-S (usft)	+E/-W (usft)	Vertical Section (usft)	Dogleg Rate (°/100ft)	Build Rate (°/100ft)	Turn Rate (°/100ft)
4,377.2	21.24	325.76	4,209.4	794.2	-540.6	-388.8	0.00	0.00	0.00
DROP 2°/100'									
4,400.0	20.78	325.76	4,230.7	801.0	-545.2	-392.1	2.00	-2.00	0.00
4,500.0	18.78	325.76	4,324.8	828.9	-564.2	-405.8	2.00	-2.00	0.00
4,600.0	16.78	325.76	4,420.0	854.2	-581.4	-418.2	2.00	-2.00	0.00
4,700.0	14.78	325.76	4,516.3	876.7	-596.7	-429.2	2.00	-2.00	0.00
4,800.0	12.78	325.76	4,613.4	896.3	-610.1	-438.8	2.00	-2.00	0.00
4,900.0	10.78	325.76	4,711.3	913.2	-621.6	-447.1	2.00	-2.00	0.00
5,000.0	8.78	325.76	4,809.8	927.3	-631.1	-454.0	2.00	-2.00	0.00
5,100.0	6.78	325.76	4,908.9	938.4	-638.7	-459.4	2.00	-2.00	0.00
5,200.0	4.78	325.76	5,008.4	946.8	-644.4	-463.5	2.00	-2.00	0.00
5,300.0	2.78	325.76	5,108.1	952.2	-648.1	-466.2	2.00	-2.00	0.00
5,400.0	0.78	325.76	5,208.1	954.8	-649.9	-467.4	2.00	-2.00	0.00
5,438.9	0.00	0.00	5,247.0	955.0	-650.0	-467.5	2.00	-2.00	0.00
HOLD VERTICAL									
5,500.0	0.00	0.00	5,308.1	955.0	-650.0	-467.5	0.00	0.00	0.00
5,538.9	0.00	0.00	5,347.0	955.0	-650.0	-467.5	0.00	0.00	0.00
KOP, BUILD 10°/100'									
5,550.0	1.11	88.89	5,358.1	955.0	-649.9	-467.4	10.00	10.00	0.00
5,600.0	6.11	88.89	5,408.0	955.1	-646.7	-464.3	10.00	10.00	0.00
5,650.0	11.11	88.89	5,457.4	955.2	-639.3	-456.9	10.00	10.00	0.00
5,700.0	16.11	88.89	5,506.0	955.4	-627.5	-445.3	10.00	10.00	0.00
5,750.0	21.11	88.89	5,553.3	955.7	-611.6	-429.6	10.00	10.00	0.00
5,800.0	26.11	88.89	5,599.1	956.1	-591.6	-409.8	10.00	10.00	0.00
5,850.0	31.11	88.89	5,643.0	956.6	-567.6	-386.2	10.00	10.00	0.00
5,900.0	36.11	88.89	5,684.7	957.1	-540.0	-358.9	10.00	10.00	0.00
5,950.0	41.11	88.89	5,723.7	957.7	-508.8	-328.1	10.00	10.00	0.00
6,000.0	46.11	88.89	5,759.9	958.4	-474.3	-294.1	10.00	10.00	0.00
6,050.0	51.10	88.89	5,793.0	959.1	-436.8	-257.1	10.00	10.00	0.00
6,100.0	56.10	88.89	5,822.6	959.9	-396.6	-217.4	10.00	10.00	0.00
6,150.0	61.10	88.89	5,848.7	960.7	-353.9	-175.3	10.00	10.00	0.00
6,200.0	66.10	88.89	5,870.9	961.6	-309.2	-131.1	10.00	10.00	0.00
6,250.0	71.10	88.89	5,889.1	962.5	-262.6	-85.2	10.00	10.00	0.00
6,300.0	76.10	88.89	5,903.2	963.4	-214.7	-37.8	10.00	10.00	0.00
6,350.0	81.10	88.89	5,913.1	964.4	-165.7	10.5	10.00	10.00	0.00
6,400.0	86.10	88.89	5,918.7	965.3	-116.0	59.6	10.00	10.00	0.00
6,439.0	90.00	88.89	5,920.0	966.1	-77.1	98.0	10.00	10.00	0.00
LP @ 90° INC - NIOBRARA									
6,500.0	90.00	88.89	5,920.0	967.3	-16.1	158.2	0.00	0.00	0.00
6,600.0	90.00	88.89	5,920.0	969.2	83.9	256.9	0.00	0.00	0.00
6,700.0	90.00	88.89	5,920.0	971.1	183.9	355.6	0.00	0.00	0.00
6,800.0	90.00	88.89	5,920.0	973.0	283.8	454.3	0.00	0.00	0.00
6,900.0	90.00	88.89	5,920.0	975.0	383.8	553.0	0.00	0.00	0.00
7,000.0	90.00	88.89	5,920.0	976.9	483.8	651.7	0.00	0.00	0.00
7,100.0	90.00	88.89	5,920.0	978.8	583.8	750.4	0.00	0.00	0.00
7,200.0	90.00	88.89	5,920.0	980.8	683.8	849.1	0.00	0.00	0.00
7,300.0	90.00	88.89	5,920.0	982.7	783.8	947.8	0.00	0.00	0.00
7,400.0	90.00	88.89	5,920.0	984.6	883.7	1,046.5	0.00	0.00	0.00
7,500.0	90.00	88.89	5,920.0	986.6	983.7	1,145.2	0.00	0.00	0.00
7,600.0	90.00	88.89	5,920.0	988.5	1,083.7	1,243.9	0.00	0.00	0.00
7,700.0	90.00	88.89	5,920.0	990.4	1,183.7	1,342.6	0.00	0.00	0.00
7,800.0	90.00	88.89	5,920.0	992.4	1,283.7	1,441.3	0.00	0.00	0.00
7,900.0	90.00	88.89	5,920.0	994.3	1,383.6	1,540.0	0.00	0.00	0.00

Planning Report

Database:	EDT_32Bit_ODBC	Local Co-ordinate Reference:	Well TROTT 8E-10-5N
Company:	EXTRACTION OIL & GAS	TVD Reference:	KB 24' @ 5059.0usft
Project:	Weld County	MD Reference:	KB 24' @ 5059.0usft
Site:	Sec 7-T4N-R68W	North Reference:	True
Well:	TROTT 8E-10-5N	Survey Calculation Method:	Minimum Curvature
Wellbore:	ORIGINAL WELLBORE		
Design:	PROPOSAL 1		

Planned Survey										
Measured Depth (usft)	Inclination (°)	Azimuth (°)	Vertical Depth (usft)	+N/-S (usft)	+E/-W (usft)	Vertical Section (usft)	Dogleg Rate (°/100ft)	Build Rate (°/100ft)	Turn Rate (°/100ft)	
8,000.0	90.00	88.89	5,920.0	996.2	1,483.6	1,638.7	0.00	0.00	0.00	
8,045.7	90.00	88.89	5,920.0	997.1	1,529.3	1,683.7	0.00	0.00	0.00	
HOLD										
8,100.0	90.00	88.89	5,920.0	998.2	1,583.6	1,737.4	0.00	0.00	0.00	
8,200.0	90.00	88.89	5,920.0	1,000.1	1,683.6	1,836.1	0.00	0.00	0.00	
8,300.0	90.00	88.89	5,920.0	1,002.0	1,783.6	1,934.8	0.00	0.00	0.00	
8,400.0	90.00	88.88	5,920.0	1,004.0	1,883.5	2,033.5	0.00	0.00	0.00	
8,500.0	90.00	88.88	5,920.0	1,005.9	1,983.5	2,132.2	0.00	0.00	0.00	
8,600.0	90.00	88.88	5,920.0	1,007.9	2,083.5	2,230.9	0.00	0.00	0.00	
8,700.0	90.00	88.88	5,920.0	1,009.9	2,183.5	2,329.6	0.00	0.00	0.00	
8,800.0	90.00	88.88	5,920.0	1,011.8	2,283.5	2,428.3	0.00	0.00	0.00	
8,900.0	90.00	88.87	5,920.0	1,013.8	2,383.5	2,527.0	0.00	0.00	0.00	
9,000.0	90.00	88.87	5,920.0	1,015.7	2,483.4	2,625.7	0.00	0.00	0.00	
9,100.0	90.00	88.87	5,920.0	1,017.7	2,583.4	2,724.4	0.00	0.00	0.00	
9,200.0	90.00	88.87	5,920.0	1,019.7	2,683.4	2,823.1	0.00	0.00	0.00	
9,300.0	90.00	88.86	5,920.0	1,021.7	2,783.4	2,921.8	0.00	0.00	0.00	
9,400.0	90.00	88.86	5,920.0	1,023.7	2,883.4	3,020.5	0.00	0.00	0.00	
9,500.0	90.00	88.86	5,920.0	1,025.7	2,983.3	3,119.2	0.00	0.00	0.00	
9,600.0	90.00	88.86	5,920.0	1,027.7	3,083.3	3,217.9	0.00	0.00	0.00	
9,700.0	90.00	88.85	5,920.0	1,029.6	3,183.3	3,316.6	0.00	0.00	0.00	
9,800.0	90.00	88.85	5,920.0	1,031.7	3,283.3	3,415.3	0.00	0.00	0.00	
9,900.0	90.00	88.85	5,920.0	1,033.7	3,383.3	3,514.0	0.00	0.00	0.00	
10,000.0	90.00	88.85	5,920.0	1,035.7	3,483.2	3,612.7	0.00	0.00	0.00	
10,100.0	90.00	88.84	5,920.0	1,037.7	3,583.2	3,711.5	0.00	0.00	0.00	
10,200.0	90.00	88.84	5,920.0	1,039.7	3,683.2	3,810.2	0.00	0.00	0.00	
10,300.0	90.00	88.84	5,920.0	1,041.7	3,783.2	3,908.9	0.00	0.00	0.00	
10,400.0	90.00	88.84	5,920.0	1,043.7	3,883.2	4,007.6	0.00	0.00	0.00	
10,500.0	90.00	88.84	5,920.0	1,045.8	3,983.1	4,106.3	0.00	0.00	0.00	
10,600.0	90.00	88.83	5,920.0	1,047.8	4,083.1	4,205.0	0.00	0.00	0.00	
10,700.0	90.00	88.83	5,920.0	1,049.9	4,183.1	4,303.7	0.00	0.00	0.00	
10,800.0	90.00	88.83	5,920.0	1,051.9	4,283.1	4,402.4	0.00	0.00	0.00	
10,900.0	90.00	88.83	5,920.0	1,053.9	4,383.0	4,501.2	0.00	0.00	0.00	
11,000.0	90.00	88.82	5,920.0	1,056.0	4,483.0	4,599.9	0.00	0.00	0.00	
11,100.0	90.00	88.82	5,920.0	1,058.1	4,583.0	4,698.6	0.00	0.00	0.00	
11,200.0	90.00	88.82	5,920.0	1,060.1	4,683.0	4,797.3	0.00	0.00	0.00	
11,300.0	90.00	88.82	5,920.0	1,062.2	4,783.0	4,896.0	0.00	0.00	0.00	
11,400.0	90.00	88.81	5,920.0	1,064.2	4,882.9	4,994.7	0.00	0.00	0.00	
11,500.0	90.00	88.81	5,920.0	1,066.3	4,982.9	5,093.5	0.00	0.00	0.00	
11,600.0	90.00	88.81	5,920.0	1,068.4	5,082.9	5,192.2	0.00	0.00	0.00	
11,700.0	90.00	88.81	5,920.0	1,070.5	5,182.9	5,290.9	0.00	0.00	0.00	
11,800.0	90.00	88.80	5,920.0	1,072.6	5,282.9	5,389.6	0.00	0.00	0.00	
11,900.0	90.00	88.80	5,920.0	1,074.6	5,382.8	5,488.3	0.00	0.00	0.00	
12,000.0	90.00	88.80	5,920.0	1,076.7	5,482.8	5,587.1	0.00	0.00	0.00	
12,100.0	90.00	88.80	5,920.0	1,078.8	5,582.8	5,685.8	0.00	0.00	0.00	
12,200.0	90.00	88.80	5,920.0	1,080.9	5,682.8	5,784.5	0.00	0.00	0.00	
12,300.0	90.00	88.79	5,920.0	1,083.0	5,782.7	5,883.2	0.00	0.00	0.00	
12,400.0	90.00	88.79	5,920.0	1,085.1	5,882.7	5,982.0	0.00	0.00	0.00	
12,455.4	90.00	88.79	5,920.0	1,086.3	5,938.1	6,036.6	0.00	0.00	0.00	
TD at 12455.4' MD										

Planning Report

Database:	EDT_32Bit_ODBC	Local Co-ordinate Reference:	Well TROTT 8E-10-5N
Company:	EXTRACTION OIL & GAS	TVD Reference:	KB 24' @ 5059.0usft
Project:	Weld County	MD Reference:	KB 24' @ 5059.0usft
Site:	Sec 7-T4N-R68W	North Reference:	True
Well:	TROTT 8E-10-5N	Survey Calculation Method:	Minimum Curvature
Wellbore:	ORIGINAL WELLBORE		
Design:	PROPOSAL 1		

Design Targets									
Target Name									
- hit/miss target	Dip Angle	Dip Dir.	TVD	+N/-S	+E/-W	Northing	Easting	Latitude	Longitude
- Shape	(°)	(°)	(usft)	(usft)	(usft)	(usft)	(usft)		
TROTT 5 - PBHL REV 2	0.00	0.00	5,920.0	1,086.3	5,938.1	1,362,480.41	3,133,980.24	40° 19' 38.687 N	105° 1' 10.027 W
- plan hits target center									
- Point									
TROTT 5 - LP REV 2	0.00	0.00	5,920.0	997.1	1,529.3	1,362,368.39	3,129,571.97	40° 19' 37.812 N	105° 2' 6.954 W
- plan hits target center									
- Point									

Formations					
Measured Depth	Vertical Depth	Name	Lithology	Dip	Dip Direction
(usft)	(usft)			(°)	(°)
2,446.7	2,410.0	PARKMAN			
3,090.4	3,010.0	SUSSEX			
3,562.5	3,450.0	SHANNON			
6,439.0	5,920.0	NIOBRARA			

Plan Annotations				
Measured Depth	Vertical Depth	Local Coordinates		Comment
(usft)	(usft)	+N/-S (usft)	+E/-W (usft)	
1,200.0	1,200.0	0.0	0.0	BUILD 2°/100'
2,261.8	2,237.6	160.8	-109.4	HOLD 21.24° INC
4,377.2	4,209.4	794.2	-540.6	DROP 2°/100'
5,438.9	5,247.0	955.0	-650.0	HOLD VERTICAL
5,538.9	5,347.0	955.0	-650.0	KOP, BUILD 10°/100'
6,439.0	5,920.0	966.1	-77.1	LP @ 90° INC
8,045.7	5,920.0	997.1	1,529.3	HOLD
12,455.4	5,920.0	1,086.3	5,938.1	TD at 12455.4' MD