

# **EXTRACTION OIL & GAS**

**Weld County  
Sec 7-T4N-R68W  
TROT 8E-10-3N**

**ORIGINAL WELLBORE**

**Plan: PROPOSAL 1**

## **Standard Planning Report**

**23 May, 2017**



## WELL DETAILS: TROTT 8E-10-3N

+N/-S	+E/-W	Northing	Easting	5035.0	Latitude	Longitude	Slot
0.0	0.0	1361363.18	3128011.91	40° 19' 27.959 N	105° 2' 27.164 W		

## SECTION DETAILS

Sec	MD	Inc	Azi	TVD	+N/-S	+E/-W	Dleg	TFace	VSect	Target
1	0.0	0.00	0.00	0.0	0.0	0.0	0.00	0.00	0.0	
2	1100.0	0.00	0.00	1100.0	0.0	0.0	0.00	0.00	0.0	
3	2791.5	33.83	322.06	2694.9	382.5	-298.2	2.00	322.06	-202.0	
4	3943.7	33.83	322.06	3652.1	888.5	-692.6	0.00	0.00	-469.3	
5	5635.3	0.00	0.00	5247.0	1271.0	-990.8	2.00	180.00	-671.3	
6	5735.3	0.00	0.00	5347.0	1271.0	-990.8	0.00	0.00	-671.3	
7	6635.3	90.00	88.76	5920.0	1283.4	-417.9	10.00	88.76	-111.0	
8	8617.5	90.00	88.76	5920.0	1326.4	1563.8	0.00	0.00	1827.4	
9	13027.4	90.00	88.96	5920.0	1414.2	5972.8	0.00	90.00	6138.0	

## ANNOTATIONS

MD	Inc	Azi	TVD	+N/-S	+E/-W	VSect	Departure	Annotation
1100.0	0.00	0.00	1100.0	0.0	0.0	0.0	0.0	BUILD 2°/100'
2791.5	33.83	322.06	2694.9	382.5	-298.2	-202.0	485.0	HOLD 33.83° INC
3943.7	33.83	322.06	3652.1	888.5	-692.6	-469.3	1126.5	DROP 2°/100'
5635.3	0.00	0.00	5247.0	1271.0	-990.8	-671.3	1611.6	HOLD VERTICAL
5735.3	0.00	0.00	5347.0	1271.0	-990.8	-671.3	1611.6	KOP, BUILD 10°/100'
6635.3	90.00	88.76	5920.0	1283.4	-417.9	-111.0	2184.6	LP @ 90° INC
8617.5	90.00	88.76	5920.0	1326.4	1563.8	1827.4	4166.8	HOLD
13027.4	90.00	88.96	5920.0	1414.2	5972.8	6138.0	8576.7	TD at 13027.4' MD

## DESIGN TARGET DETAILS

Name	TVD	+N/-S	+E/-W	Northing	Easting	Latitude	Longitude	Shape
TROTT 3 - LP REV 2	5920.0	1326.4	1563.8	1362697.70	3129568.85	40° 19' 41.066 N	105° 2' 6.972 W	Point
- plan hits target center								
TROTT 3 - PBHL REV 2	5920.0	1414.2	5972.8	1362808.26	3133977.35	40° 19' 41.927 N	105° 1' 10.042 W	Point
- plan hits target center								

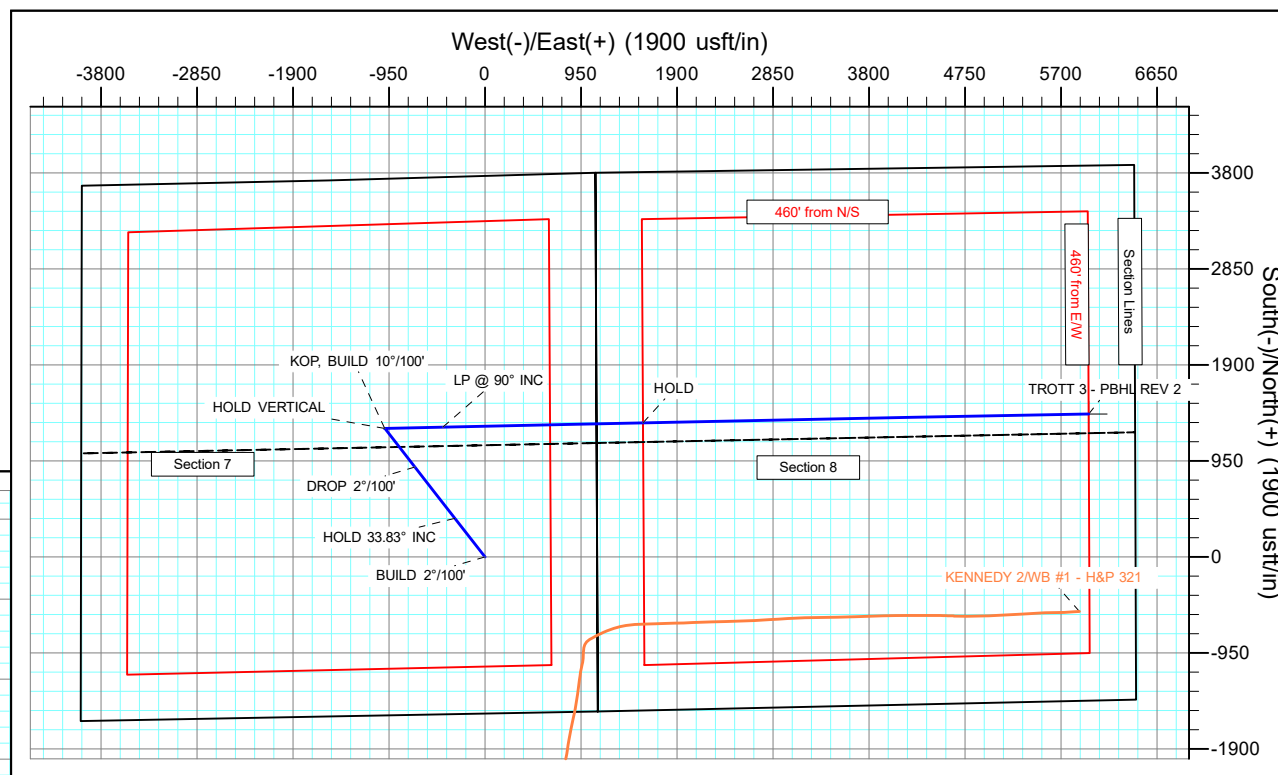
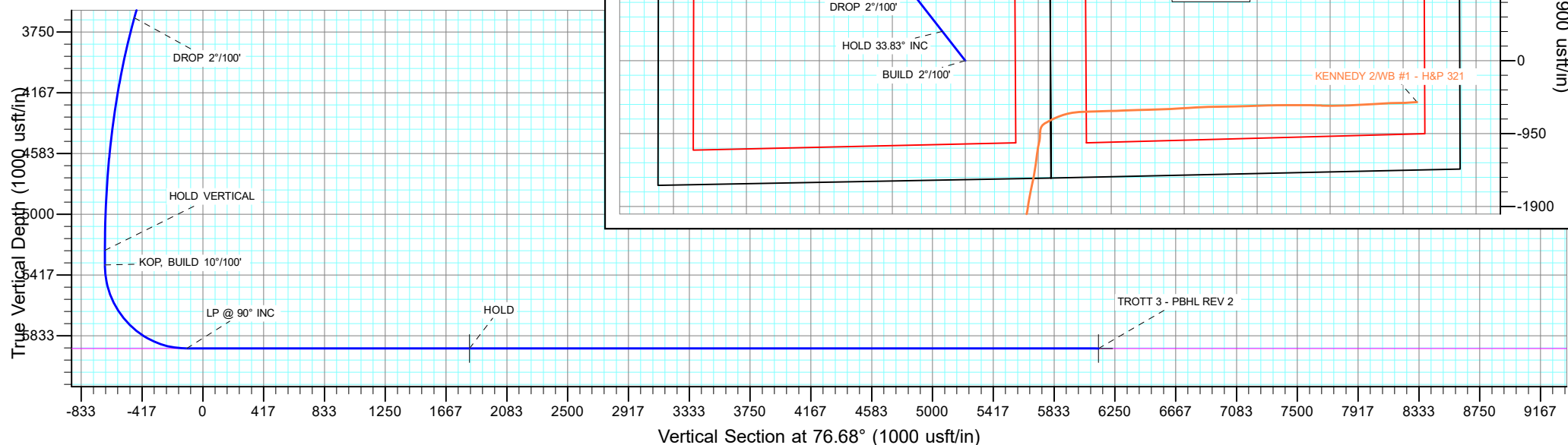
## FORMATION TOP DETAILS

TVDPath	MDPath	Formation
2410.0	2460.6	PARKMAN
3010.0	3170.8	SUSSEX
3450.0	3700.5	SHANNON
5920.0	6635.3	NIOBRARA

## PROJECT DETAILS: Weld County

Geodetic System: US State Plane 1983  
 Datum: North American Datum 1983  
 Ellipsoid: GRS 1980  
 Zone: Colorado Northern Zone  
 System Datum: Mean Sea Level

SHL:  
 1550' FSL, 1110' FEL  
 Sec 7-T4N-R68W  
 LP"  
 2463' FNL, 460' FWL  
 Sec 8-T4N-R68W  
 BHL:  
 2455' FNL, 460' FEL  
 Sec 8-T4N-R68W



## Planning Report

<b>Database:</b>	EDT_32Bit_ODBC	<b>Local Co-ordinate Reference:</b>	Well TROTT 8E-10-3N
<b>Company:</b>	EXTRACTION OIL & GAS	<b>TVD Reference:</b>	KB 24' @ 5059.0usft
<b>Project:</b>	Weld County	<b>MD Reference:</b>	KB 24' @ 5059.0usft
<b>Site:</b>	Sec 7-T4N-R68W	<b>North Reference:</b>	True
<b>Well:</b>	TROTT 8E-10-3N	<b>Survey Calculation Method:</b>	Minimum Curvature
<b>Wellbore:</b>	ORIGINAL WELLBORE		
<b>Design:</b>	PROPOSAL 1		

<b>Project</b>	Weld County		
<b>Map System:</b>	US State Plane 1983	<b>System Datum:</b>	Mean Sea Level
<b>Geo Datum:</b>	North American Datum 1983		
<b>Map Zone:</b>	Colorado Northern Zone		

Site		Sec 7-T4N-R68W			
Site Position:		Northing:	1,359,838.99 usft	Latitude:	40° 19' 12.839 N
From:	Lat/Long	Easting:	3,129,136.57 usft	Longitude:	105° 2' 12.746 W
Position Uncertainty:	0.0 usft	Slot Radius:	13.200 in	Grid Convergence:	0.30 °

Well	TROTT 8E-10-3N					
Well Position	+N/-S	1,530.0 usft	Northing:	1,361,363.18 usft	Latitude:	40° 19' 27.959 N
	+E/-W	-1,116.7 usft	Easting:	3,128,011.91 usft	Longitude:	105° 2' 27.164 W
Position Uncertainty		0.0 usft	Wellhead Elevation:		Ground Level:	5,035.0 usft

<b>Wellbore</b>	ORIGINAL WELLBORE				
<b>Magnetics</b>	<b>Model Name</b>	<b>Sample Date</b>	<b>Declination (°)</b>	<b>Dip Angle (°)</b>	<b>Field Strength (nT)</b>
	IGRF2015	4/4/2017	8.37	66.76	52,345.06251191

<b>Design</b>	PROPOSAL 1			
<b>Audit Notes:</b>				
<b>Version:</b>	<b>Phase:</b>	PROTOTYPE	<b>Tie On Depth:</b>	0.0
<b>Vertical Section:</b>	<b>Depth From (TVD) (usft)</b>	<b>+N/-S (usft)</b>	<b>+E/-W (usft)</b>	<b>Direction (°)</b>
	0.0	0.0	0.0	76.68

<b>Plan Survey Tool Program</b>	<b>Date</b>	5/23/2017		
<b>Depth From (usft)</b>	<b>Depth To (usft)</b>	<b>Survey (Wellbore)</b>	<b>Tool Name</b>	<b>Remarks</b>
1	0.0	13,027.0	PROPOSAL 1 (ORIGINAL WELL	MWD OWSG
			OWSG MWD - Standard	

<b>Plan Sections</b>										
<b>Measured Depth (usft)</b>	<b>Inclination (°)</b>	<b>Azimuth (°)</b>	<b>Vertical Depth (usft)</b>	<b>+N/-S (usft)</b>	<b>+E/-W (usft)</b>	<b>Dogleg Rate (°/100ft)</b>	<b>Build Rate (°/100ft)</b>	<b>Turn Rate (°/100ft)</b>	<b>TFO (°)</b>	<b>Target</b>
0.0	0.00	0.00	0.0	0.0	0.0	0.00	0.00	0.00	0.00	
1,100.0	0.00	0.00	1,100.0	0.0	0.0	0.00	0.00	0.00	0.00	
2,791.5	33.83	322.06	2,694.9	382.5	-298.2	2.00	2.00	0.00	322.06	
3,943.7	33.83	322.06	3,652.1	888.5	-692.6	0.00	0.00	0.00	0.00	
5,635.3	0.00	0.00	5,247.0	1,271.0	-990.8	2.00	-2.00	0.00	180.00	
5,735.3	0.00	0.00	5,347.0	1,271.0	-990.8	0.00	0.00	0.00	0.00	
6,635.3	90.00	88.76	5,920.0	1,283.4	-417.9	10.00	10.00	0.00	88.76	
8,617.5	90.00	88.76	5,920.0	1,326.4	1,563.8	0.00	0.00	0.00	0.00	TROTT 3 - LP REV 2
13,027.4	90.00	88.96	5,920.0	1,414.2	5,972.8	0.00	0.00	0.00	90.00	TROTT 3 - PBHL RE\

# Planning Report

<b>Database:</b>	EDT_32Bit_ODBC	<b>Local Co-ordinate Reference:</b>	Well TROTT 8E-10-3N
<b>Company:</b>	EXTRACTION OIL & GAS	<b>TVD Reference:</b>	KB 24' @ 5059.0usft
<b>Project:</b>	Weld County	<b>MD Reference:</b>	KB 24' @ 5059.0usft
<b>Site:</b>	Sec 7-T4N-R68W	<b>North Reference:</b>	True
<b>Well:</b>	TROTT 8E-10-3N	<b>Survey Calculation Method:</b>	Minimum Curvature
<b>Wellbore:</b>	ORIGINAL WELLBORE		
<b>Design:</b>	PROPOSAL 1		

Planned Survey									
Measured Depth (usft)	Inclination (°)	Azimuth (°)	Vertical Depth (usft)	+N/-S (usft)	+E/-W (usft)	Vertical Section (usft)	Dogleg Rate (°/100ft)	Build Rate (°/100ft)	Turn Rate (°/100ft)
0.0	0.00	0.00	0.0	0.0	0.0	0.0	0.00	0.00	0.00
100.0	0.00	0.00	100.0	0.0	0.0	0.0	0.00	0.00	0.00
200.0	0.00	0.00	200.0	0.0	0.0	0.0	0.00	0.00	0.00
300.0	0.00	0.00	300.0	0.0	0.0	0.0	0.00	0.00	0.00
400.0	0.00	0.00	400.0	0.0	0.0	0.0	0.00	0.00	0.00
500.0	0.00	0.00	500.0	0.0	0.0	0.0	0.00	0.00	0.00
600.0	0.00	0.00	600.0	0.0	0.0	0.0	0.00	0.00	0.00
700.0	0.00	0.00	700.0	0.0	0.0	0.0	0.00	0.00	0.00
800.0	0.00	0.00	800.0	0.0	0.0	0.0	0.00	0.00	0.00
900.0	0.00	0.00	900.0	0.0	0.0	0.0	0.00	0.00	0.00
1,000.0	0.00	0.00	1,000.0	0.0	0.0	0.0	0.00	0.00	0.00
1,100.0	0.00	0.00	1,100.0	0.0	0.0	0.0	0.00	0.00	0.00
<b>BUILD 2°/100'</b>									
1,200.0	2.00	322.06	1,200.0	1.4	-1.1	-0.7	2.00	2.00	0.00
1,300.0	4.00	322.06	1,299.8	5.5	-4.3	-2.9	2.00	2.00	0.00
1,400.0	6.00	322.06	1,399.5	12.4	-9.6	-6.5	2.00	2.00	0.00
1,500.0	8.00	322.06	1,498.7	22.0	-17.1	-11.6	2.00	2.00	0.00
1,600.0	10.00	322.06	1,597.5	34.3	-26.8	-18.1	2.00	2.00	0.00
1,700.0	12.00	322.06	1,695.6	49.4	-38.5	-26.1	2.00	2.00	0.00
1,800.0	14.00	322.06	1,793.1	67.1	-52.3	-35.4	2.00	2.00	0.00
1,900.0	16.00	322.06	1,889.6	87.5	-68.2	-46.2	2.00	2.00	0.00
2,000.0	18.00	322.06	1,985.3	110.6	-86.2	-58.4	2.00	2.00	0.00
2,100.0	20.00	322.06	2,079.8	136.3	-106.2	-72.0	2.00	2.00	0.00
2,200.0	22.00	322.06	2,173.2	164.5	-128.3	-86.9	2.00	2.00	0.00
2,300.0	24.00	322.06	2,265.2	195.3	-152.3	-103.2	2.00	2.00	0.00
2,400.0	26.00	322.06	2,355.8	228.7	-178.3	-120.8	2.00	2.00	0.00
2,460.6	27.21	322.06	2,410.0	250.1	-194.9	-132.1	2.00	2.00	0.00
<b>PARKMAN</b>									
2,500.0	28.00	322.06	2,444.9	264.5	-206.2	-139.7	2.00	2.00	0.00
2,600.0	30.00	322.06	2,532.4	302.7	-236.0	-159.9	2.00	2.00	0.00
2,700.0	32.00	322.06	2,618.1	343.3	-267.6	-181.3	2.00	2.00	0.00
2,791.5	33.83	322.06	2,694.9	382.5	-298.2	-202.0	2.00	2.00	0.00
<b>HOLD 33.83° INC</b>									
2,800.0	33.83	322.06	2,702.0	386.3	-301.1	-204.0	0.00	0.00	0.00
2,900.0	33.83	322.06	2,785.0	430.2	-335.3	-227.2	0.00	0.00	0.00
3,000.0	33.83	322.06	2,868.1	474.1	-369.6	-250.4	0.00	0.00	0.00
3,100.0	33.83	322.06	2,951.2	518.0	-403.8	-273.6	0.00	0.00	0.00
3,170.8	33.83	322.06	3,010.0	549.1	-428.0	-290.0	0.00	0.00	0.00
<b>SUSSEX</b>									
3,200.0	33.83	322.06	3,034.3	561.9	-438.0	-296.8	0.00	0.00	0.00
3,300.0	33.83	322.06	3,117.3	605.8	-472.3	-320.0	0.00	0.00	0.00
3,400.0	33.83	322.06	3,200.4	649.7	-506.5	-343.2	0.00	0.00	0.00
3,500.0	33.83	322.06	3,283.5	693.6	-540.7	-366.4	0.00	0.00	0.00
3,600.0	33.83	322.06	3,366.5	737.5	-574.9	-389.5	0.00	0.00	0.00
3,700.0	33.83	322.06	3,449.6	781.4	-609.2	-412.7	0.00	0.00	0.00
3,700.5	33.83	322.06	3,450.0	781.7	-609.3	-412.8	0.00	0.00	0.00
<b>SHANNON</b>									
3,800.0	33.83	322.06	3,532.7	825.3	-643.4	-435.9	0.00	0.00	0.00
3,900.0	33.83	322.06	3,615.7	869.3	-677.6	-459.1	0.00	0.00	0.00
3,943.7	33.83	322.06	3,652.1	888.5	-692.6	-469.3	0.00	0.00	0.00
<b>DROP 2°/100'</b>									
4,000.0	32.71	322.06	3,699.1	912.8	-711.6	-482.1	2.00	-2.00	0.00
4,100.0	30.71	322.06	3,784.2	954.2	-743.9	-504.0	2.00	-2.00	0.00

# Planning Report

<b>Database:</b>	EDT_32Bit_ODBC	<b>Local Co-ordinate Reference:</b>	Well TROTT 8E-10-3N
<b>Company:</b>	EXTRACTION OIL & GAS	<b>TVD Reference:</b>	KB 24' @ 5059.0usft
<b>Project:</b>	Weld County	<b>MD Reference:</b>	KB 24' @ 5059.0usft
<b>Site:</b>	Sec 7-T4N-R68W	<b>North Reference:</b>	True
<b>Well:</b>	TROTT 8E-10-3N	<b>Survey Calculation Method:</b>	Minimum Curvature
<b>Wellbore:</b>	ORIGINAL WELLBORE		
<b>Design:</b>	PROPOSAL 1		

Planned Survey									
Measured Depth (usft)	Inclination (°)	Azimuth (°)	Vertical Depth (usft)	+N/-S (usft)	+E/-W (usft)	Vertical Section (usft)	Dogleg Rate (°/100ft)	Build Rate (°/100ft)	Turn Rate (°/100ft)
4,200.0	28.71	322.06	3,871.0	993.3	-774.3	-524.6	2.00	-2.00	0.00
4,300.0	26.71	322.06	3,959.6	1,030.0	-802.9	-544.0	2.00	-2.00	0.00
4,400.0	24.71	322.06	4,049.7	1,064.2	-829.6	-562.1	2.00	-2.00	0.00
4,500.0	22.71	322.06	4,141.2	1,095.9	-854.3	-578.8	2.00	-2.00	0.00
4,600.0	20.71	322.06	4,234.1	1,125.1	-877.0	-594.2	2.00	-2.00	0.00
4,700.0	18.71	322.06	4,328.3	1,151.7	-897.8	-608.3	2.00	-2.00	0.00
4,800.0	16.71	322.06	4,423.5	1,175.6	-916.5	-620.9	2.00	-2.00	0.00
4,900.0	14.71	322.06	4,519.8	1,197.0	-933.1	-632.2	2.00	-2.00	0.00
5,000.0	12.71	322.06	4,616.9	1,215.7	-947.7	-642.1	2.00	-2.00	0.00
5,100.0	10.71	322.06	4,714.9	1,231.7	-960.1	-650.5	2.00	-2.00	0.00
5,200.0	8.71	322.06	4,813.4	1,245.0	-970.5	-657.6	2.00	-2.00	0.00
5,300.0	6.71	322.06	4,912.5	1,255.5	-978.8	-663.1	2.00	-2.00	0.00
5,400.0	4.71	322.06	5,012.0	1,263.4	-984.9	-667.3	2.00	-2.00	0.00
5,500.0	2.71	322.06	5,111.8	1,268.5	-988.8	-670.0	2.00	-2.00	0.00
5,600.0	0.71	322.06	5,211.7	1,270.8	-990.7	-671.2	2.00	-2.00	0.00
5,635.3	0.00	0.00	5,247.0	1,271.0	-990.8	-671.3	2.00	-2.00	0.00
HOLD VERTICAL									
5,700.0	0.00	0.00	5,311.7	1,271.0	-990.8	-671.3	0.00	0.00	0.00
5,735.3	0.00	0.00	5,347.0	1,271.0	-990.8	-671.3	0.00	0.00	0.00
KOP, BUILD 10°/100'									
5,750.0	1.47	88.76	5,361.7	1,271.0	-990.6	-671.1	10.00	10.00	0.00
5,800.0	6.47	88.76	5,411.6	1,271.1	-987.1	-667.7	10.00	10.00	0.00
5,850.0	11.47	88.76	5,461.0	1,271.2	-979.4	-660.1	10.00	10.00	0.00
5,900.0	16.47	88.76	5,509.5	1,271.5	-967.3	-648.3	10.00	10.00	0.00
5,950.0	21.47	88.76	5,556.8	1,271.9	-951.0	-632.4	10.00	10.00	0.00
6,000.0	26.47	88.76	5,602.4	1,272.3	-930.7	-612.6	10.00	10.00	0.00
6,050.0	31.47	88.76	5,646.2	1,272.8	-906.5	-588.9	10.00	10.00	0.00
6,100.0	36.47	88.76	5,687.6	1,273.4	-878.6	-561.6	10.00	10.00	0.00
6,150.0	41.47	88.76	5,726.5	1,274.1	-847.2	-530.8	10.00	10.00	0.00
6,200.0	46.47	88.76	5,762.4	1,274.9	-812.5	-496.9	10.00	10.00	0.00
6,250.0	51.47	88.76	5,795.3	1,275.7	-774.8	-460.0	10.00	10.00	0.00
6,300.0	56.47	88.76	5,824.7	1,276.6	-734.4	-420.5	10.00	10.00	0.00
6,350.0	61.47	88.76	5,850.4	1,277.5	-691.5	-378.6	10.00	10.00	0.00
6,400.0	66.47	88.76	5,872.4	1,278.5	-646.6	-334.7	10.00	10.00	0.00
6,450.0	71.47	88.76	5,890.3	1,279.5	-600.0	-289.1	10.00	10.00	0.00
6,500.0	76.47	88.76	5,904.1	1,280.5	-552.0	-242.1	10.00	10.00	0.00
6,550.0	81.47	88.76	5,913.7	1,281.6	-502.9	-194.1	10.00	10.00	0.00
6,600.0	86.47	88.76	5,918.9	1,282.7	-453.2	-145.5	10.00	10.00	0.00
6,635.3	90.00	88.76	5,920.0	1,283.4	-417.9	-111.0	10.00	10.00	0.00
LP @ 90° INC - NIOBRARA									
6,700.0	90.00	88.76	5,920.0	1,284.8	-353.3	-47.7	0.00	0.00	0.00
6,800.0	90.00	88.76	5,920.0	1,287.0	-253.3	50.0	0.00	0.00	0.00
6,900.0	90.00	88.76	5,920.0	1,289.2	-153.3	147.8	0.00	0.00	0.00
7,000.0	90.00	88.76	5,920.0	1,291.3	-53.3	245.6	0.00	0.00	0.00
7,100.0	90.00	88.76	5,920.0	1,293.5	46.6	343.4	0.00	0.00	0.00
7,200.0	90.00	88.76	5,920.0	1,295.7	146.6	441.2	0.00	0.00	0.00
7,300.0	90.00	88.76	5,920.0	1,297.9	246.6	539.0	0.00	0.00	0.00
7,400.0	90.00	88.76	5,920.0	1,300.0	346.6	636.8	0.00	0.00	0.00
7,500.0	90.00	88.76	5,920.0	1,302.2	446.5	734.5	0.00	0.00	0.00
7,600.0	90.00	88.76	5,920.0	1,304.4	546.5	832.3	0.00	0.00	0.00
7,700.0	90.00	88.76	5,920.0	1,306.5	646.5	930.1	0.00	0.00	0.00
7,800.0	90.00	88.76	5,920.0	1,308.7	746.5	1,027.9	0.00	0.00	0.00
7,900.0	90.00	88.76	5,920.0	1,310.9	846.4	1,125.7	0.00	0.00	0.00

# Planning Report

<b>Database:</b>	EDT_32Bit_ODBC	<b>Local Co-ordinate Reference:</b>	Well TROTT 8E-10-3N
<b>Company:</b>	EXTRACTION OIL & GAS	<b>TVD Reference:</b>	KB 24' @ 5059.0usft
<b>Project:</b>	Weld County	<b>MD Reference:</b>	KB 24' @ 5059.0usft
<b>Site:</b>	Sec 7-T4N-R68W	<b>North Reference:</b>	True
<b>Well:</b>	TROTT 8E-10-3N	<b>Survey Calculation Method:</b>	Minimum Curvature
<b>Wellbore:</b>	ORIGINAL WELLBORE		
<b>Design:</b>	PROPOSAL 1		

Planned Survey									
Measured Depth (usft)	Inclination (°)	Azimuth (°)	Vertical Depth (usft)	+N/-S (usft)	+E/-W (usft)	Vertical Section (usft)	Dogleg Rate (°/100ft)	Build Rate (°/100ft)	Turn Rate (°/100ft)
8,000.0	90.00	88.76	5,920.0	1,313.0	946.4	1,223.5	0.00	0.00	0.00
8,100.0	90.00	88.76	5,920.0	1,315.2	1,046.4	1,321.3	0.00	0.00	0.00
8,200.0	90.00	88.76	5,920.0	1,317.4	1,146.4	1,419.1	0.00	0.00	0.00
8,300.0	90.00	88.76	5,920.0	1,319.6	1,246.3	1,516.8	0.00	0.00	0.00
8,400.0	90.00	88.76	5,920.0	1,321.7	1,346.3	1,614.6	0.00	0.00	0.00
8,500.0	90.00	88.76	5,920.0	1,323.9	1,446.3	1,712.4	0.00	0.00	0.00
8,600.0	90.00	88.76	5,920.0	1,326.1	1,546.3	1,810.2	0.00	0.00	0.00
8,617.5	90.00	88.76	5,920.0	1,326.4	1,563.8	1,827.4	0.00	0.00	0.00
HOLD									
8,700.0	90.00	88.76	5,920.0	1,328.2	1,646.3	1,908.0	0.00	0.00	0.00
8,800.0	90.00	88.77	5,920.0	1,330.4	1,746.2	2,005.8	0.00	0.00	0.00
8,900.0	90.00	88.77	5,920.0	1,332.5	1,846.2	2,103.6	0.00	0.00	0.00
9,000.0	90.00	88.77	5,920.0	1,334.7	1,946.2	2,201.3	0.00	0.00	0.00
9,100.0	90.00	88.78	5,920.0	1,336.8	2,046.2	2,299.1	0.00	0.00	0.00
9,200.0	90.00	88.78	5,920.0	1,338.9	2,146.1	2,396.9	0.00	0.00	0.00
9,300.0	90.00	88.79	5,920.0	1,341.1	2,246.1	2,494.7	0.00	0.00	0.00
9,400.0	90.00	88.79	5,920.0	1,343.2	2,346.1	2,592.4	0.00	0.00	0.00
9,500.0	90.00	88.80	5,920.0	1,345.3	2,446.1	2,690.2	0.00	0.00	0.00
9,600.0	90.00	88.80	5,920.0	1,347.4	2,546.1	2,788.0	0.00	0.00	0.00
9,700.0	90.00	88.81	5,920.0	1,349.5	2,646.0	2,885.8	0.00	0.00	0.00
9,800.0	90.00	88.81	5,920.0	1,351.5	2,746.0	2,983.5	0.00	0.00	0.00
9,900.0	90.00	88.82	5,920.0	1,353.6	2,846.0	3,081.3	0.00	0.00	0.00
10,000.0	90.00	88.82	5,920.0	1,355.7	2,946.0	3,179.1	0.00	0.00	0.00
10,100.0	90.00	88.83	5,920.0	1,357.7	3,045.9	3,276.8	0.00	0.00	0.00
10,200.0	90.00	88.83	5,920.0	1,359.8	3,145.9	3,374.6	0.00	0.00	0.00
10,300.0	90.00	88.84	5,920.0	1,361.8	3,245.9	3,472.3	0.00	0.00	0.00
10,400.0	90.00	88.84	5,920.0	1,363.8	3,345.9	3,570.1	0.00	0.00	0.00
10,500.0	90.00	88.84	5,920.0	1,365.8	3,445.9	3,667.8	0.00	0.00	0.00
10,600.0	90.00	88.85	5,920.0	1,367.9	3,545.8	3,765.6	0.00	0.00	0.00
10,700.0	90.00	88.85	5,920.0	1,369.9	3,645.8	3,863.3	0.00	0.00	0.00
10,800.0	90.00	88.86	5,920.0	1,371.9	3,745.8	3,961.1	0.00	0.00	0.00
10,900.0	90.00	88.86	5,920.0	1,373.8	3,845.8	4,058.8	0.00	0.00	0.00
11,000.0	90.00	88.87	5,920.0	1,375.8	3,945.8	4,156.6	0.00	0.00	0.00
11,100.0	90.00	88.87	5,920.0	1,377.8	4,045.7	4,254.3	0.00	0.00	0.00
11,200.0	90.00	88.88	5,920.0	1,379.8	4,145.7	4,352.1	0.00	0.00	0.00
11,300.0	90.00	88.88	5,920.0	1,381.7	4,245.7	4,449.8	0.00	0.00	0.00
11,400.0	90.00	88.89	5,920.0	1,383.7	4,345.7	4,547.6	0.00	0.00	0.00
11,500.0	90.00	88.89	5,920.0	1,385.6	4,445.7	4,645.3	0.00	0.00	0.00
11,600.0	90.00	88.90	5,920.0	1,387.5	4,545.6	4,743.0	0.00	0.00	0.00
11,700.0	90.00	88.90	5,920.0	1,389.4	4,645.6	4,840.8	0.00	0.00	0.00
11,800.0	90.00	88.91	5,920.0	1,391.4	4,745.6	4,938.5	0.00	0.00	0.00
11,900.0	90.00	88.91	5,920.0	1,393.3	4,845.6	5,036.2	0.00	0.00	0.00
12,000.0	90.00	88.92	5,920.0	1,395.2	4,945.6	5,134.0	0.00	0.00	0.00
12,100.0	90.00	88.92	5,920.0	1,397.0	5,045.6	5,231.7	0.00	0.00	0.00
12,200.0	90.00	88.92	5,920.0	1,398.9	5,145.5	5,329.4	0.00	0.00	0.00
12,300.0	90.00	88.93	5,920.0	1,400.8	5,245.5	5,427.1	0.00	0.00	0.00
12,400.0	90.00	88.93	5,920.0	1,402.7	5,345.5	5,524.9	0.00	0.00	0.00
12,500.0	90.00	88.94	5,920.0	1,404.5	5,445.5	5,622.6	0.00	0.00	0.00
12,600.0	90.00	88.94	5,920.0	1,406.4	5,545.5	5,720.3	0.00	0.00	0.00
12,700.0	90.00	88.95	5,920.0	1,408.2	5,645.5	5,818.0	0.00	0.00	0.00
12,800.0	90.00	88.95	5,920.0	1,410.0	5,745.4	5,915.7	0.00	0.00	0.00
12,900.0	90.00	88.96	5,920.0	1,411.9	5,845.4	6,013.4	0.00	0.00	0.00
13,000.0	90.00	88.96	5,920.0	1,413.7	5,945.4	6,111.2	0.00	0.00	0.00
13,027.4	90.00	88.96	5,920.0	1,414.2	5,972.8	6,138.0	0.00	0.00	0.00

## Planning Report

<b>Database:</b>	EDT_32Bit_ODBC	<b>Local Co-ordinate Reference:</b>	Well TROTT 8E-10-3N
<b>Company:</b>	EXTRACTION OIL & GAS	<b>TVD Reference:</b>	KB 24' @ 5059.0usft
<b>Project:</b>	Weld County	<b>MD Reference:</b>	KB 24' @ 5059.0usft
<b>Site:</b>	Sec 7-T4N-R68W	<b>North Reference:</b>	True
<b>Well:</b>	TROTT 8E-10-3N	<b>Survey Calculation Method:</b>	Minimum Curvature
<b>Wellbore:</b>	ORIGINAL WELLBORE		
<b>Design:</b>	PROPOSAL 1		

Planned Survey									
Measured Depth (usft)	Inclination (°)	Azimuth (°)	Vertical Depth (usft)	+N/-S (usft)	+E/-W (usft)	Vertical Section (usft)	Dogleg Rate (°/100ft)	Build Rate (°/100ft)	Turn Rate (°/100ft)
TD at 13027.4' MD									

Design Targets									
Target Name	Dip Angle (°)	Dip Dir. (°)	TVD (usft)	+N/-S (usft)	+E/-W (usft)	Northing (usft)	Easting (usft)	Latitude	Longitude
- hit/miss target									
- Shape									
TROTT 3 - LP REV 2	0.00	0.00	5,920.0	1,326.4	1,563.8	1,362,697.70	3,129,568.85	40° 19' 41.066 N	105° 2' 6.972 W
- plan hits target center									
- Point									
TROTT 3 - PBHL REV 2	0.00	0.00	5,920.0	1,414.2	5,972.8	1,362,808.26	3,133,977.35	40° 19' 41.927 N	105° 1' 10.042 W
- plan hits target center									
- Point									

Formations						
Measured Depth (usft)	Vertical Depth (usft)	Name	Lithology	Dip (°)	Dip Direction (°)	
2,460.6	2,410.0	PARKMAN				
3,170.8	3,010.0	SUSSEX				
3,700.5	3,450.0	SHANNON				
6,635.3	5,920.0	NIOBRARA				

Plan Annotations				
Measured Depth (usft)	Vertical Depth (usft)	Local Coordinates		Comment
		+N/-S (usft)	+E/-W (usft)	
1,100.0	1,100.0	0.0	0.0	BUILD 2°/100'
2,791.5	2,694.9	382.5	-298.2	HOLD 33.83° INC
3,943.7	3,652.1	888.5	-692.6	DROP 2°/100'
5,635.3	5,247.0	1,271.0	-990.8	HOLD VERTICAL
5,735.3	5,347.0	1,271.0	-990.8	KOP, BUILD 10°/100'
6,635.3	5,920.0	1,283.4	-417.9	LP @ 90° INC
8,617.5	5,920.0	1,326.4	1,563.8	HOLD
13,027.4	5,920.0	1,414.2	5,972.8	TD at 13027.4' MD