

HALLIBURTON

iCem® Service

K P KAUFFMAN CO, INC. EBIZ

For: Rick Ramos

Date: Friday, July 28, 2017

904198712 Walter Hunziker #2 Annular fill

904198712 Walter Hunziker #2 Annular fill

Case 1

Job Date: Friday, July 28, 2017

Sincerely,

Nathaniel Moore

1.0 Real-Time Job Summary

1.1 Job Event Log

Type	Seq. No.	Activity	Graph Label	Date	Time	Source	Pass-Side Pump Pressure (psi)	Downhole Density (ppg)	Combined Pump Rate (bbl/min)	Pump Stage Total (bbl)	Comments
Event	1	Call Out	Call Out	7/28/2017	03:30:00	USER					OL time 0730. Verify equipment and materials
Event	2	Assessment Of Location Safety Meeting	Assessment Of Location Safety Meeting	7/28/2017	07:00:00	USER					Spot in and rig up equipment. Perfs at 740' in 4.5" 10.5 # casing. Retainer at 730'. 2.375" 4.7 # tubing. Surface 232' 8.625" 24#. 70 sks into annulus with 1.25 bbl on top of retainer. Shoot perfs at 232' and pump remaining 80 sks down 4.5" into annulus and chase with 0.5 bbl water.
Event	3	Pre-Job Safety Meeting	Pre-Job Safety Meeting	7/28/2017	08:30:00	USER	-7.00	8.46	0.00	20.3	Discuss job procedure with HES and rig crew
Event	4	Start Job	Start Job	7/28/2017	08:59:41	COM1	-23.00	8.49	0.00	20.3	
Event	5	Other	Fill lines	7/28/2017	09:00:00	COM1	-23.00	8.48	0.00	20.3	3 bbl water
Event	6	Pressure Test	Pressure Test	7/28/2017	09:03:02	USER	1729.00	8.58	0.00	2.2	500 psi kickout test and 2000 psi pressure test
Event	7	Other	Circulate well	7/28/2017	09:07:43	COM1	115.00	8.53	2.00	2.9	Pump 26 bbl well fluid to get good clean returns.
Event	8	Check Weight	Check weight	7/28/2017	09:35:00	COM1	-50.00	7.18	0.00	0.0	15.8 ppg verified with pressurized scales
Event	9	Pump Cement	Pump Cement	7/28/2017	09:35:11	USER	-50.00	4.54	0.00	0.0	70 sks/12.3 bbl 15.8 pps 1.15 ft3/sk 5.0 gal/sk
Event	10	Pump Displacement	Pump Displacement	7/28/2017	09:42:34	COM1	106.00	14.77	2.60	16.0	1.6 bbl water displacment to leave 1.25 bbl on top of retainer

iCem Service

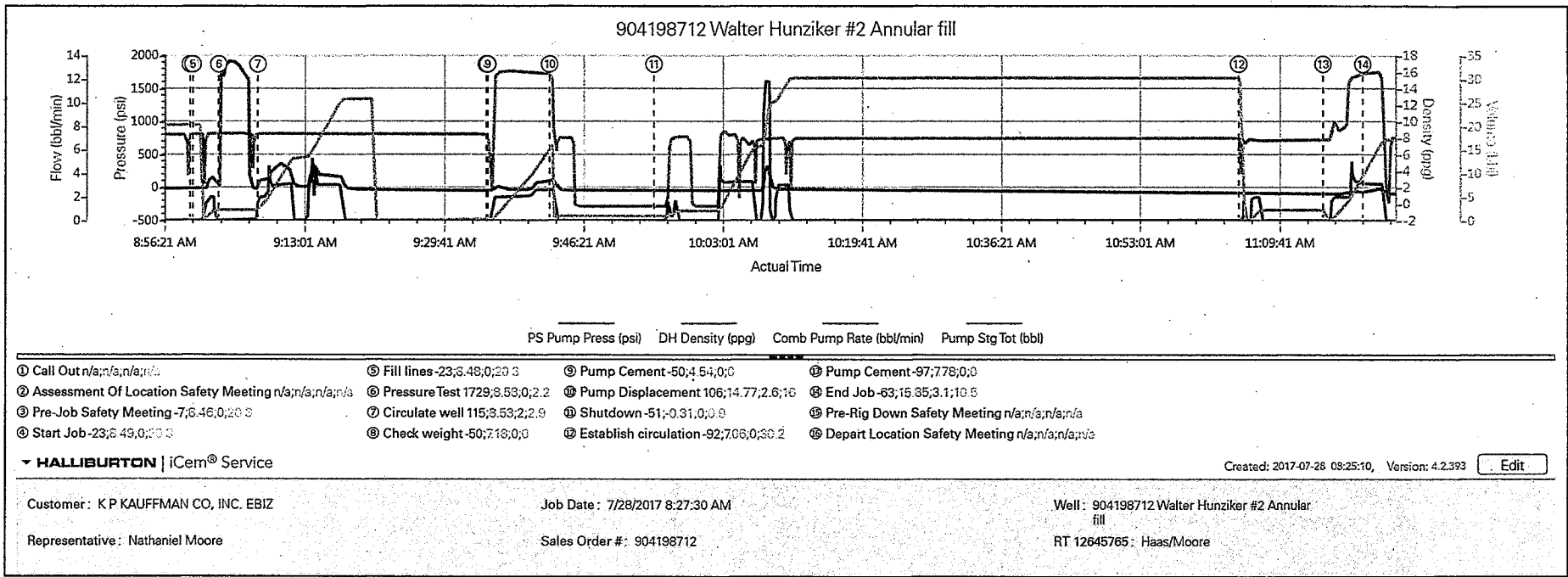
(v. 4.2.393)

Created: Friday, July 28, 2017

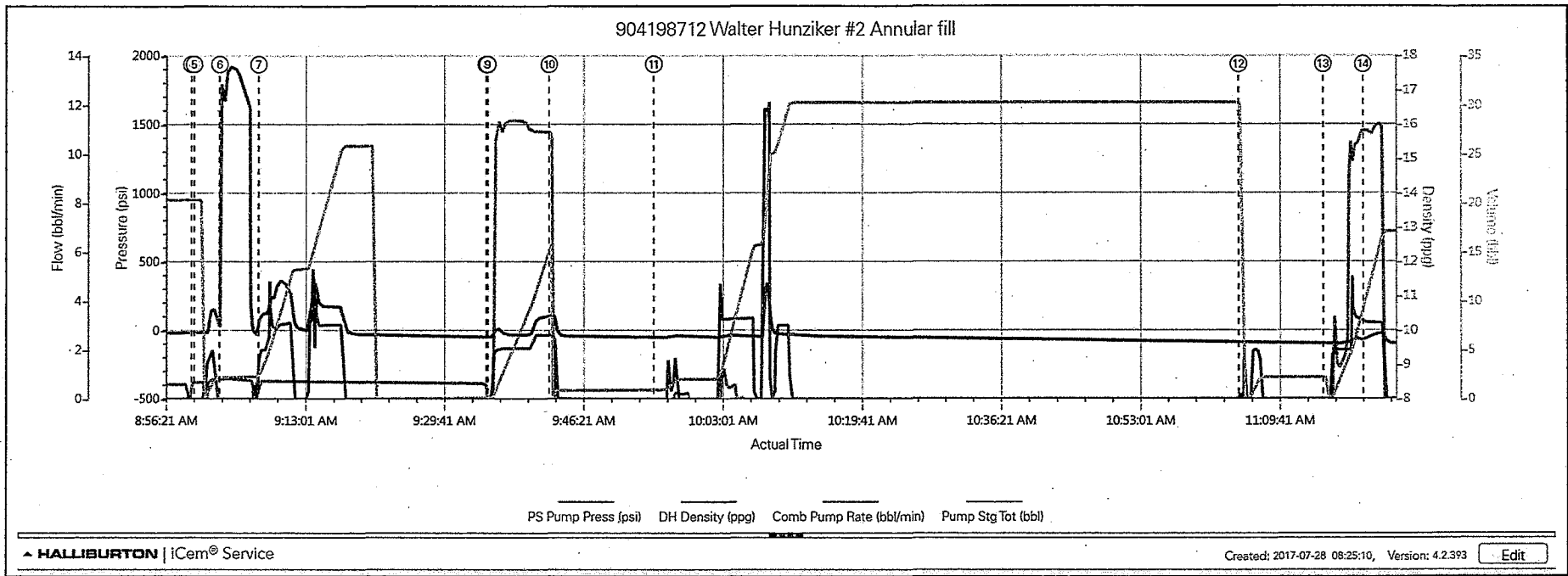
Event	11	Shutdown	Shutdown	7/28/2017	09:55:03	USER	-51.00	-0.31	0.00	0.9	Wash pumps and lines and wait on wireline.
Event	12	Other	Establish circulation	7/28/2017	11:05:07	COM1	-92.00	7.06	0.00	30.2	Pump 2 bbl water down 4.5" to establish circulation.
Event	13	Pump Cement	Pump Cement	7/28/2017	11:15:12	COM1	-97.00	7.78	0.00	0.0	80 sks/16.4 bbl 15.8 ppg 1.15 ft3/sk 5.0 gal/sk
Event	14	End Job	End Job	7/28/2017	11:20:00	USER	-63.00	15.85	3.10	10.5	
Event	15	Pre-Rig Down Safety Meeting	Pre-Rig Down Safety Meeting	7/28/2017	11:40:00	USER					
Event	16	Depart Location Safety Meeting	Depart Location Safety Meeting	7/28/2017	12:30:00	USER					

2.0 Attachments

2.1 Case 1-Custom Results.png



2.2 Case 1-Custom Results (1).png



The Road to Excellence Starts with Safety

Sold To #: 303209		Ship To #: 3814844		Quote #:		Sales Order #: 0904198712					
Customer: K P KAUFFMAN CO INC-EBUS				Customer Rep: Rick Ramos							
Well Name: Walter Hunziker			Well #: 2		API/UWI #: 05-123-09718						
Field:		City (SAP): FORT LUPTON		County/Parish: WELD			State: COLORADO				
Legal Description:											
Contractor:				Rig/Platform Name/Num: Workover							
Job BOM: 7526 7526											
Well Type: OIL											
Sales Person: HALAMERICA\H139013				Srv Supervisor: Nathaniel Moore							
Job											
Formation Name											
Formation Depth (MD)		Top		Bottom							
Form Type				BHST							
Job depth MD		740 ft		Job Depth TVD							
Water Depth				Wk Ht Above Floor							
Perforation Depth (MD)		From		To							
Well Data											
Description	New / Used	Size in	ID in	Weight lbm/ft	Thread	Grade	Top MD ft	Bottom MD ft	Top TVD ft	Bottom TVD ft	
Tools and Accessories											
Type	Size in	Qty	Make	Depth ft		Type	Size in	Qty	Make		
Fluid Data											
Stage/Plug #: 1											
Fluid #	Stage Type	Fluid Name			Qty	Qty UoM	Mixing Density lbm/gal	Yield ft3/sack	Mix Fluid Gal	Rate bbl/min	Total Mix Fluid Gal
1	Annular Fill	HALCEM (TM) SYSTEM			150	sack	15.8	1.15		3	5
5 Gal		FRESH WATER									
Cement Left In Pipe		Amount	ft	Reason			Shoe Joint				