

T6S, R97W, 6th P.M.

Caerus Oil & Gas LLC

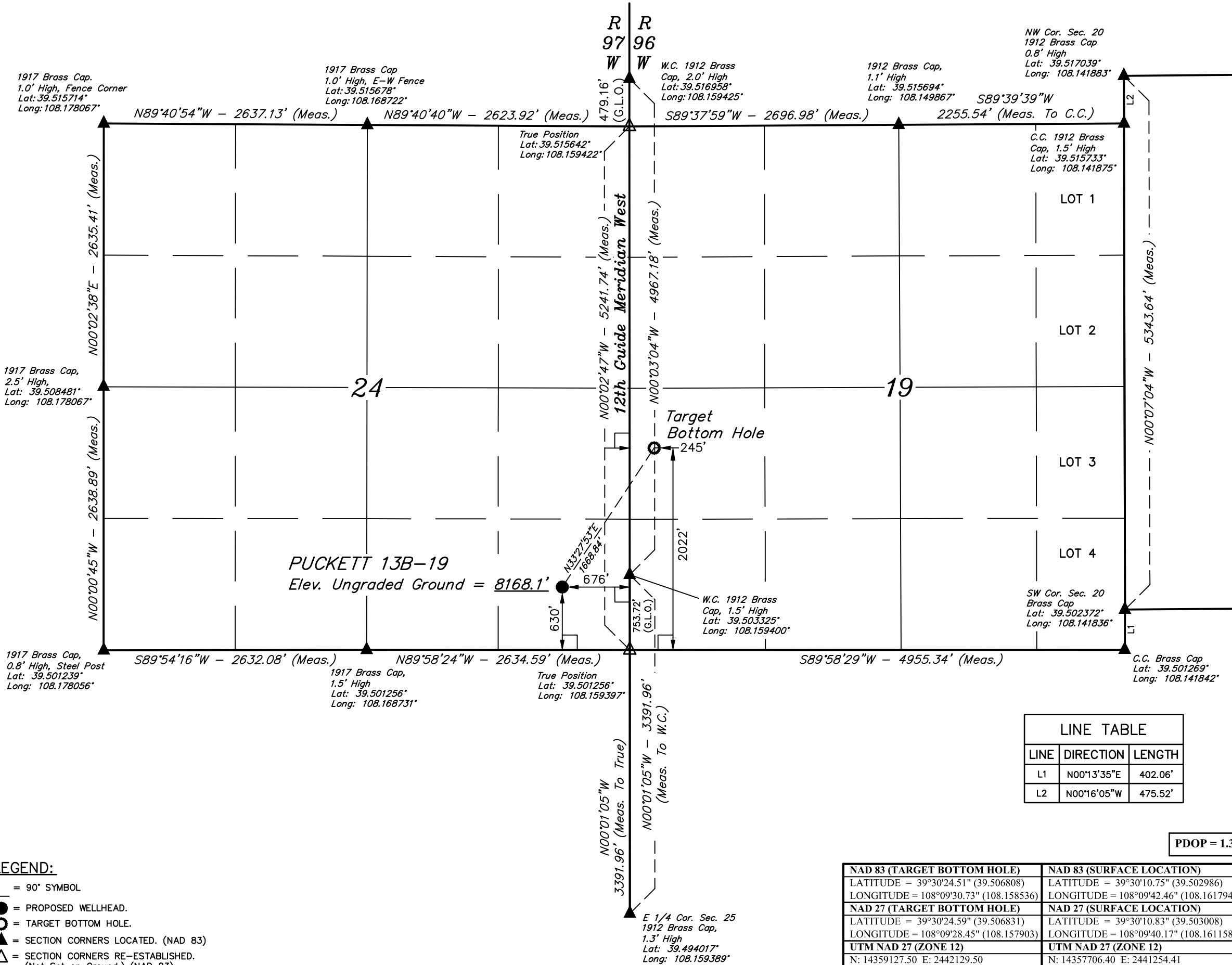
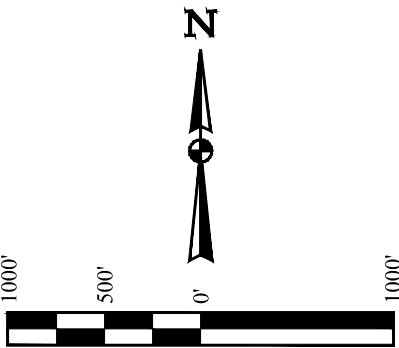
PUCKETT 13B-19
SE 1/4 SE 1/4, SECTION 24, T6S, R97W, 6th P.M.
GARFIELD COUNTY, COLORADO

BASIS OF BEARINGS

BASIS OF BEARINGS IS A G.P.S. OBSERVATION

BASIS OF ELEVATION

SPOT ELEVATION AT THE NORTHWEST CORNER OF SECTION 30, T5S, R95W, 6th P.M., TAKEN FROM THE FORKED GULCH, QUADRANGLE, COLORADO, GARFIELD COUNTY, 7.5 MINUTE QUAD. (TOPOGRAPHIC MAP) PUBLISHED BY THE UNITED STATES DEPARTMENT OF THE INTERIOR, GEOLOGICAL SURVEY. SAID ELEVATION IS MARKED AS BEING 5966 FEET.



PUCKETT 13B-19
Elev. Ungraded Ground = 8168.1'

LINE TABLE		
LINE	DIRECTION	LENGTH
L1	N00°13'35"E	402.06'
L2	N00°16'05"W	475.52'

PDOP = 1.3

NAD 83 (TARGET BOTTOM HOLE)	NAD 83 (SURFACE LOCATION)
LATITUDE = 39°30'24.51" (39.506808)	LATITUDE = 39°30'10.75" (39.502986)
LONGITUDE = 108°09'30.73" (108.158536)	LONGITUDE = 108°09'42.46" (108.161794)
NAD 27 (TARGET BOTTOM HOLE)	NAD 27 (SURFACE LOCATION)
LATITUDE = 39°30'24.59" (39.506831)	LATITUDE = 39°30'10.83" (39.503008)
LONGITUDE = 108°09'28.45" (108.157903)	LONGITUDE = 108°09'40.17" (108.161158)
UTM NAD 27 (ZONE 12)	UTM NAD 27 (ZONE 12)
N: 14359127.50 E: 2442129.50	N: 14357706.40 E: 2441254.41

CERTIFICATE

THIS IS TO CERTIFY THAT THE ABOVE PLAT WAS PREPARED AND LOCATION AS SHOWN WAS STAKED ON THE GROUND FROM FIELD NOTES OF ACTUAL SURVEYS MADE BY ME OR UNDER MY SUPERVISION AND THAT THE SAME ARE TRUE AND CORRECT TO THE BEST OF MY KNOWLEDGE AND BELIEF.

REGISTERED LAND SURVEYOR
REGISTRATION NO. 38130
STATE OF COLORADO 08-02-17

REV: 1 07-31-17 M.D. (SHL & BHL CHANGE)



UELS, LLC
Corporate Office * 85 South 200 East
Vernal, UT 84078 * (435) 789-1017

SURVEYED BY	DATE	REVISED BY	DATE
BRIAN BAKER, B.B.	12-14-15		
DRAWN BY	DATE		
M.D.	01-26-16		
SCALE	1" = 1000'		

WELL LOCATION PLAT

LEGEND:

- 90° SYMBOL
- PROPOSED WELLHEAD.
- TARGET BOTTOM HOLE.
- SECTION CORNERS LOCATED. (NAD 83)
- SECTION CORNERS RE-ESTABLISHED. (Not Set on Ground.) (NAD 83)