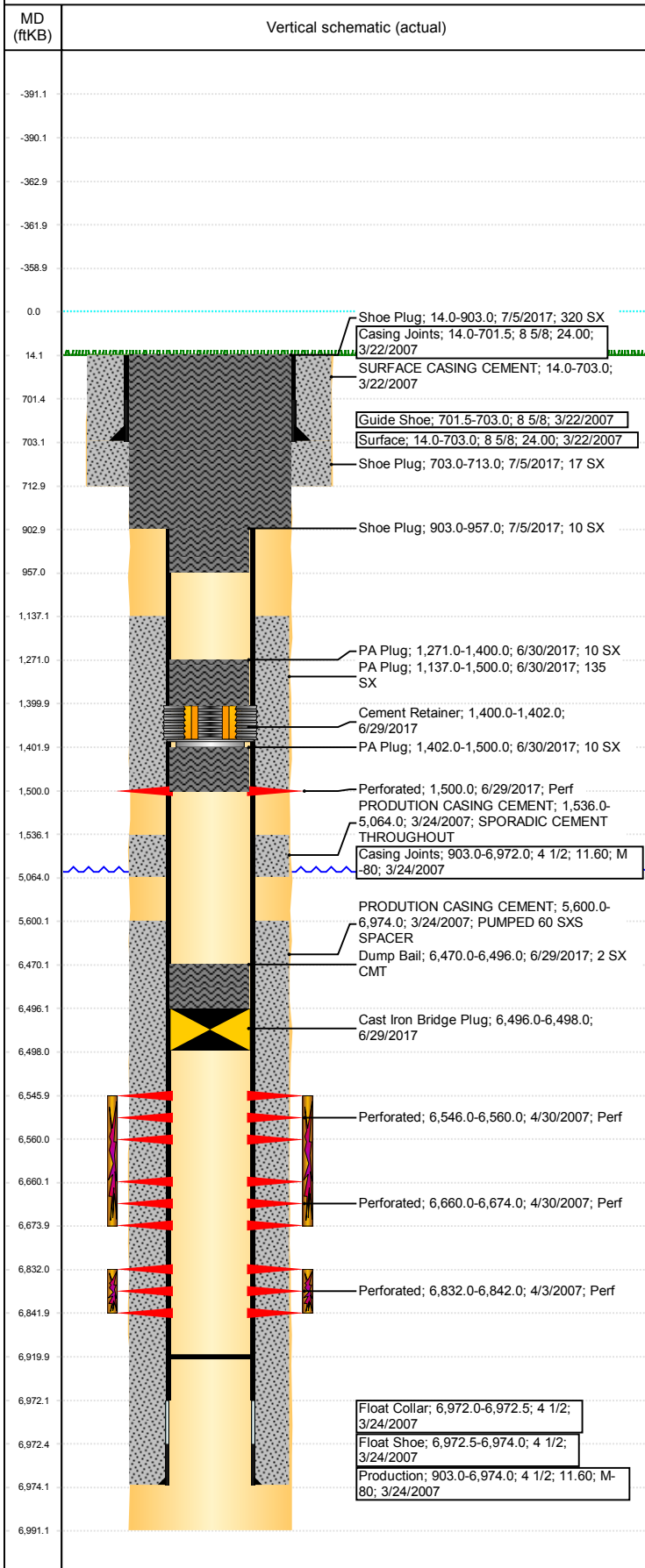


Operations Wellbore Schematic Report

Well Name: CACHE USX AA05-17

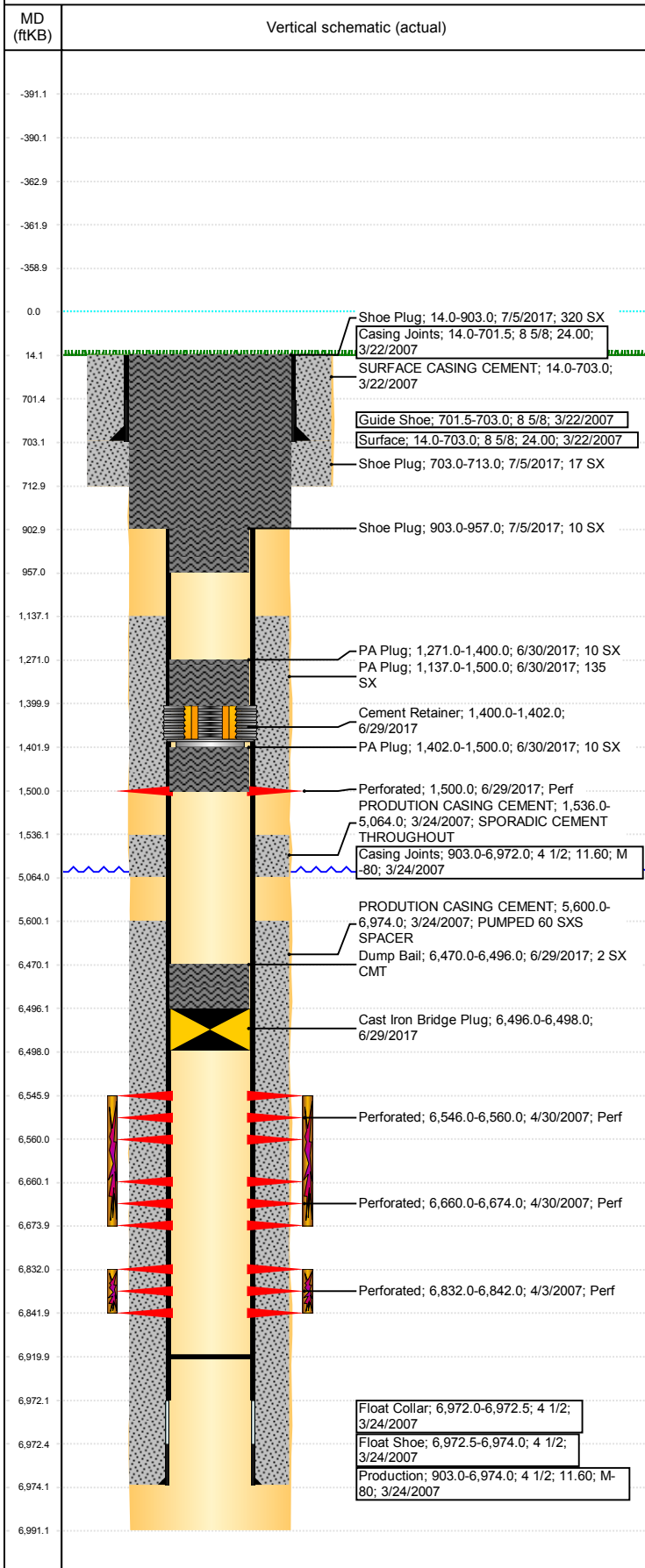
VERTICAL - ORIGINAL HOLE, 7/20/2017 4:07:57 PM



Well Header						
API 05-123-24587	Business Unit DJ BASIN		District 15	Well Config VERTICAL		
Original KB Elevation (ft) 4,734	KB - GL / MSL (ftKB) 14.00		Spud Date 3/21/2007		P & A Date 7/6/2017	
Comment DISCREPANCIES: DR RPT TD DATE 3/25/2006; ST RPT TD 3/24/2006; CSG TALLY DATE 3/24/2006. DR RPT TD 6991'; ST RPT TD 6992'						
Directions To Well WCR 74 AND 65 E .1 S .6 W .25 N .4 W INTO						
Current PBTD (mKB) ORIGINAL HOLE - 6,920.0						
Surface Location (Congressional)						
Quarter 3 SE	Quarter 4 NE	Section 5	Township 6	Twtnshp N/S Dir N	Range 63	Range E/W Dir W
Bottom Hole Location						
North-South Distance (ft)		From N or S Line		East-West Distance (ft)		From E or W Line
Plug Back Total Depths						
Date	Depth (ftKB)	Method		Com		
3/24/2007	6,958.0	CASING TALLY		FLOAT COLLAR ON CASING TALLY		
4/2/2007	6,940.0	CASED HOLE LOG		DEPTH LOGGER ON CBL		
5/7/2007	6,956.0	TAG		DRILL/CIRCULATE THROUGH PLUG AND CONTIN...		
6/26/2014	6,920.0	TBG TAG				
10/8/2014	6,920.0	TAG		SHOVE CBP TO BOTTOM TAG W/224 JTS		
Wellbore Sections						
Section Des		Size (in)		Act Top, MD (ftKB)		Act Btm, MD (ftKB)
SURFACE		12 1/4		14		713
PRODUCTION		7 7/8		713		6,991
Zone Statuses						
Zone Name	Status Date	Status	Fluid Type	Job		Prod Method
CODELL	5/15/2007	PR	Water	DRILLING/COMPLETION - ORIGINAL, 3/21/2006...		Flowing
CODELL	2/12/2010	PR		HORIZONTAL WELL PREP, 6/26/2014 13:00		
CODELL	10/8/2014	PR		ABANDON WELL, 6/28/2017 07:00		
CODELL	6/29/2017	P&A	Water	DRILLING/COMPLETION - ORIGINAL, 3/21/2006...		Flowing
NIOBRARA	5/15/2007	PR		HORIZONTAL WELL PREP, 6/26/2014 13:00		
NIOBRARA	2/12/2010	PR				
NIOBRARA	10/8/2014	PR				
NIOBRARA	3/10/2017	SI				
NIOBRARA	6/29/2017	P&A		ABANDON WELL, 6/28/2017 07:00		
Casing Strings						
Csg Des	Run Date	OD (in)	Wt/Len (lb/ft)	Grade	Top, MD (ftKB)	MD (ftKB)
Surface	3/22/2007	8 5/8	24.00		14.0	703.0
Production	3/24/2007	4 1/2	11.60	M-80	14.0	6,974.0
Cement						
Des				Top (ftKB)		Btm (ftKB)
SURFACE CASING CEMENT				14.0		703.0
PRODUCTION CASING CEMENT				1,536.0		5,064.0
PRODUCTION CASING CEMENT				5,600.0		6,974.0
Dump Bail				6,470.0		6,496.0
PA Plug				1,137.0		1,500.0
PA Plug				1,271.0		1,400.0
PA Plug				1,402.0		1,500.0
Shoe Plug				14.0		903.0
Shoe Plug				703.0		713.0
Shoe Plug				903.0		957.0
Tubing Components						
Item Des		OD (in)	Wt (lb/ft)	Grade	Jts	Len (ft)
Perforation Data						
Linked Zone	Bnch/Stg	Sum of Entered Shot Total	Top (ftKB)	Btm (ftKB)	Date	
CODELL, ORIGINAL HOLE	A	4	1,500.00	1,500.00	6/29/2017	
NIOBRARA, ORIGINAL HOLE		56	6,546.00	6,560.00	4/30/2007	
NIOBRARA, ORIGINAL HOLE	B	56	6,660.00	6,674.00	4/30/2007	
CODELL, ORIGINAL HOLE		40	6,832.00	6,842.00	4/3/2007	

Well Name: CACHE USX AA05-17

VERTICAL - ORIGINAL HOLE, 7/20/2017 4:07:58 PM



Perforation Data					
Linked Zone	Bnch/Stg	Sum of Entered Shot Total	Top (ftKB)	Btm (ftKB)	Date
Total (Sum)		156			
Other In Hole					
Run Date	Des		OD (in)	Top (ftKB)	Btm (ftKB)
6/29/2017	Cast Iron Bridge Plug		3.99	6,496.0	6,498.0
6/29/2017	Cement Retainer		3.99	1,400.0	1,402.0
Logs					
Date	Type		Top, MD (ftKB)	Btm, MD (ftKB)	
3/24/2007	COMPENSATED DENSITY		2,750.0	6,965.0	
3/24/2007	INDUCTION		693.0	6,985.0	
4/2/2007	CBL/CCL/GR		1,426.0	6,940.0	
10/22/2013	GYRO		0.0	6,750.0	
Stimulation Intervals					
Bnch/Stg	Start Date	Primary Job Type			
	4/30/2007	DRILLING/COMPLETION - ORIGINAL			
Comment					
Volume Slurry Total (gal)					
171,276.00					
Treat Pressure Avg (psi)		Treat Pressure Max (psi)	Slurry Rate Avg (bbl/min)	Slurry Rate Max (bbl/min)	
4,510.0		4,695.0	61.1	62.3	
Bnch/Stg	Start Date	Primary Job Type			
	4/30/2007	DRILLING/COMPLETION - ORIGINAL			
Comment					
Volume Slurry Total (gal)					
127,680.00					
Treat Pressure Avg (psi)		Treat Pressure Max (psi)	Slurry Rate Avg (bbl/min)	Slurry Rate Max (bbl/min)	
3,210.0		3,770.0	22.2	23.4	