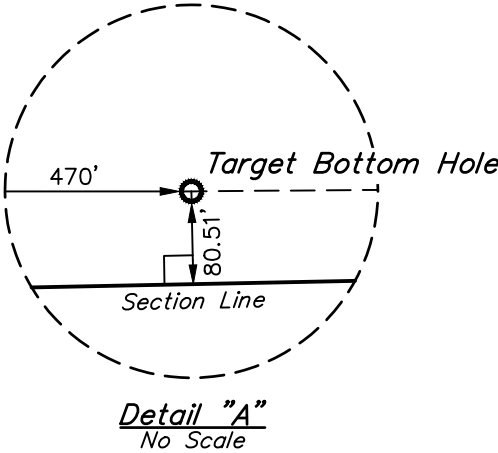
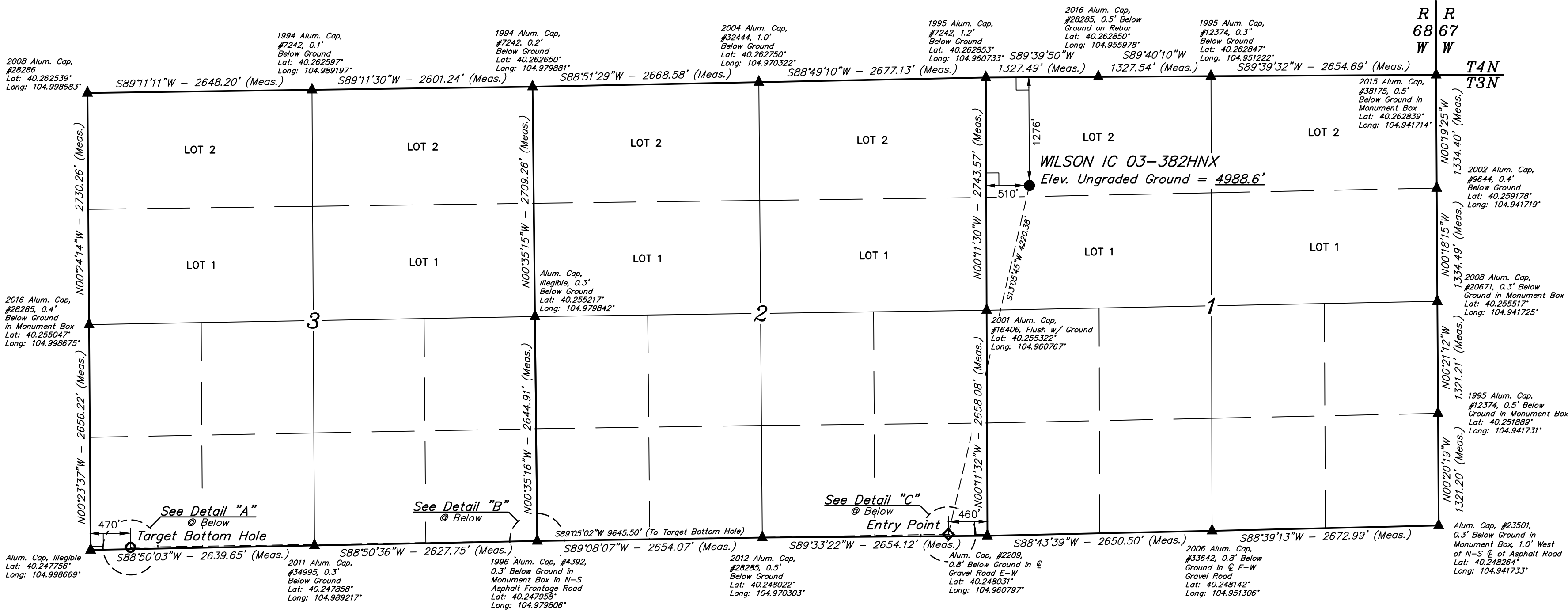
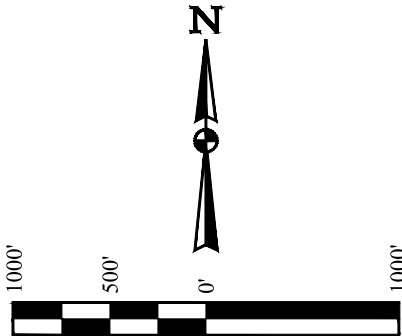
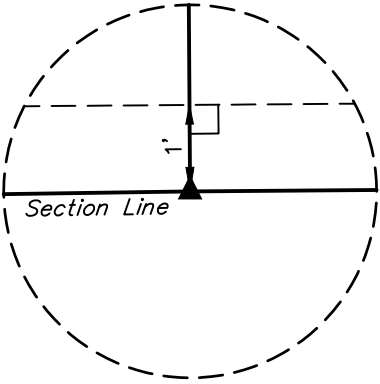


WILSON IC 03-382HNX  
NW 1/4 NW 1/4, SECTION 1, T3N, R68W, 6th P.M.  
WELD COUNTY, COLORADO

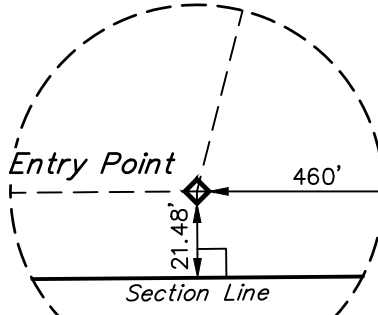
BASIS OF BEARINGS  
BASIS OF ELEVATION  
USGS COOPERATIVE BASE NETWORK CONTROL STATION,  
DESIGNATION 'VERMILYEA'. NGS DATA SHEET LISTS THE NAVD  
88 ELEVATION AS BEING 5026 FEET.



Detail "A"  
No Scale



Detail "B"  
No Scale



Detail "C"  
No Scale

CERTIFICATE OF REGISTRATION  
THIS IS TO CERTIFY THAT THE ABOVE SURVEY WAS MADE BY THE SURVEYOR AND THAT THE SAME ARE TRUE AND CORRECT TO THE BEST OF HIS KNOWLEDGE AND BELIEF.

REGISTERED LAND SURVEYOR  
RECEIVED NO. 28285  
STATE OF COLORADO

REV: 2 11-14-16 L.C.S. (NAME CHANGE)

LEGEND:  
= 90° SYMBOL  
= PROPOSED WELLHEAD.  
= TARGET BOTTOM HOLE.  
= ENTRY POINT.  
= SECTION CORNERS LOCATED. (NAD 83)

PDOP = 1.5

|  |  |  |
|--|--|--|
| NAD 83 (SURFACE LOCATION)              | NAD 83 (ENTRY POINT)                   | NAD 83 (TARGET BOTTOM HOLE)            |
| LATITUDE = 40°15'33.66" (40.259350)    | LATITUDE = 40°14'53.11" (40.248086)    | LATITUDE = 40°14'52.20" (40.247833)    |
| LONGITUDE = 104°57'32.12" (104.958922) | LONGITUDE = 104°57'44.80" (104.962444) | LONGITUDE = 104°59'49.15" (104.996986) |
| NAD 27 (SURFACE LOCATION)              | NAD 27 (ENTRY POINT)                   | NAD 27 (TARGET BOTTOM HOLE)            |
| LATITUDE = 40°15'33.72" (40.259367)    | LATITUDE = 40°14'53.17" (40.248103)    | LATITUDE = 40°14'52.26" (40.247850)    |
| LONGITUDE = 104°57'30.20" (104.958389) | LONGITUDE = 104°57'42.88" (104.961911) | LONGITUDE = 104°59'47.23" (104.996453) |

UINTEAH  
ENGINEERING & LAND SURVEYING

UELS, LLC  
Corporate Office \* 85 South 200 East  
Vernal, UT 84078 \* (435) 789-1017

SURVEYED BY ZANE BULLARD, G.W.  
DRAWN BY M.F.D.

04-11-16  
07-21-16

SCALE  
1" = 1000'

WELL LOCATION PLAT