

# Inspection Photos

7/31/2017

Operator: NOBLE ENERGY INC - 100322

Location ID: 326752

Inspection Doc. Number: 675103784

Weld County, CO

Aaron Trujillo  
NE Reclamation Specialist  
COGCC

Inspection Photos  
Operator: NOBLE ENERGY INC - 100322  
Location ID: 326752



**Photo 1:** Photo taken from the location, facing south. Photo shows large areas of the location where vegetation is not progressing towards reclamation requirements. Vegetation seen is predominantly undesirable weedy plant species such as Kochia and Russian thistle. Photo also shows pipe equipment remaining on location.



**Photo 2:** Photo taken from the location, facing west. Photo shows pipe equipment remaining on the location.





**Photo 3:** Photo taken from the location. Photo straw wattles on location. Wattles were likely used as a stormwater BMP, however wattles have not been maintained and are now debris.



**Photo 4:** Photo taken from the west end of the location. Photo shows concrete debris remaining on the location.





**Photo 5:** Photo taken from the access road on the north end of the location, facing north. Photo shows gravel remains on access road, and access road has not been re-contoured or re-graded.



**Photo 6:** Photo taken from the access road on the north end of the location, facing north. Photo access road has not been re-contoured or re-graded. Arrow to the left shows road, arrow on right shows a ditch parallel to where the road travels uphill.



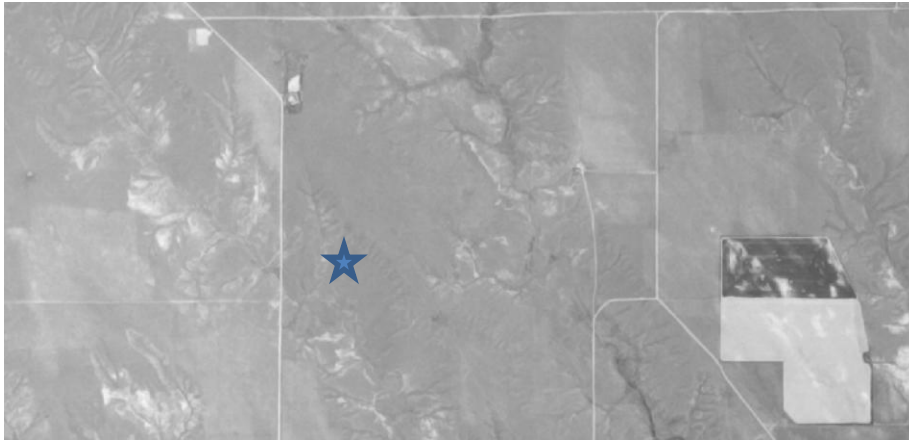


**Photo 7:** Photo taken from the access road on the north end of the location, facing north. Photo shows access road has not been re-contoured or re-graded.

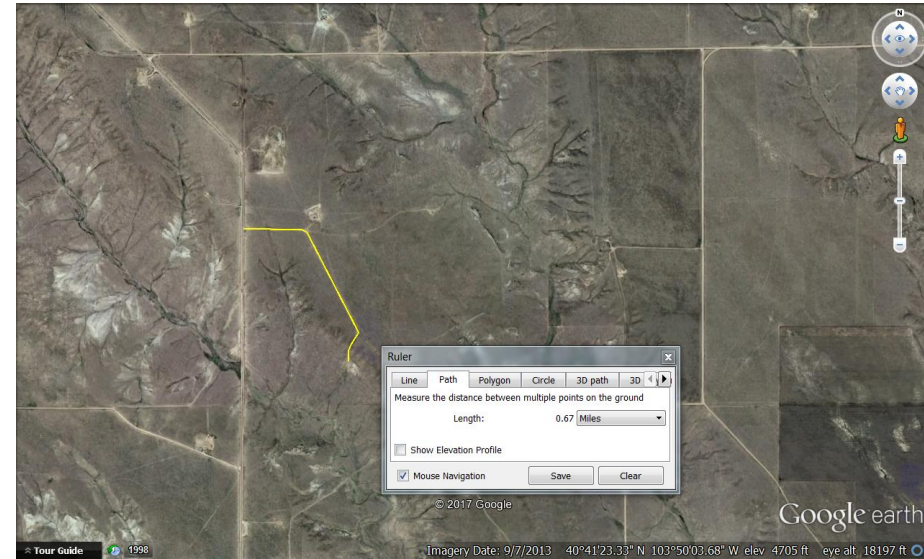


**Photo 8:** Photo taken from the access road on the north end of the location, facing north. Photo shows access road has not been re-contoured or re-graded.

Inspection Photos  
Operator: NOBLE ENERGY INC - 100322  
Location ID: 326752



**Photo 8:** May 1985 aerial imagery. Star indicates location of the well. Well was spud 9/21/1987. Photo shows location and access road pre O&G disturbance. Photo shows access road had not been pre-existing.



**Photo 9:** Most current available aerial imagery (2013). Photo shows ~0.6 miles of access road that requires reclamation.