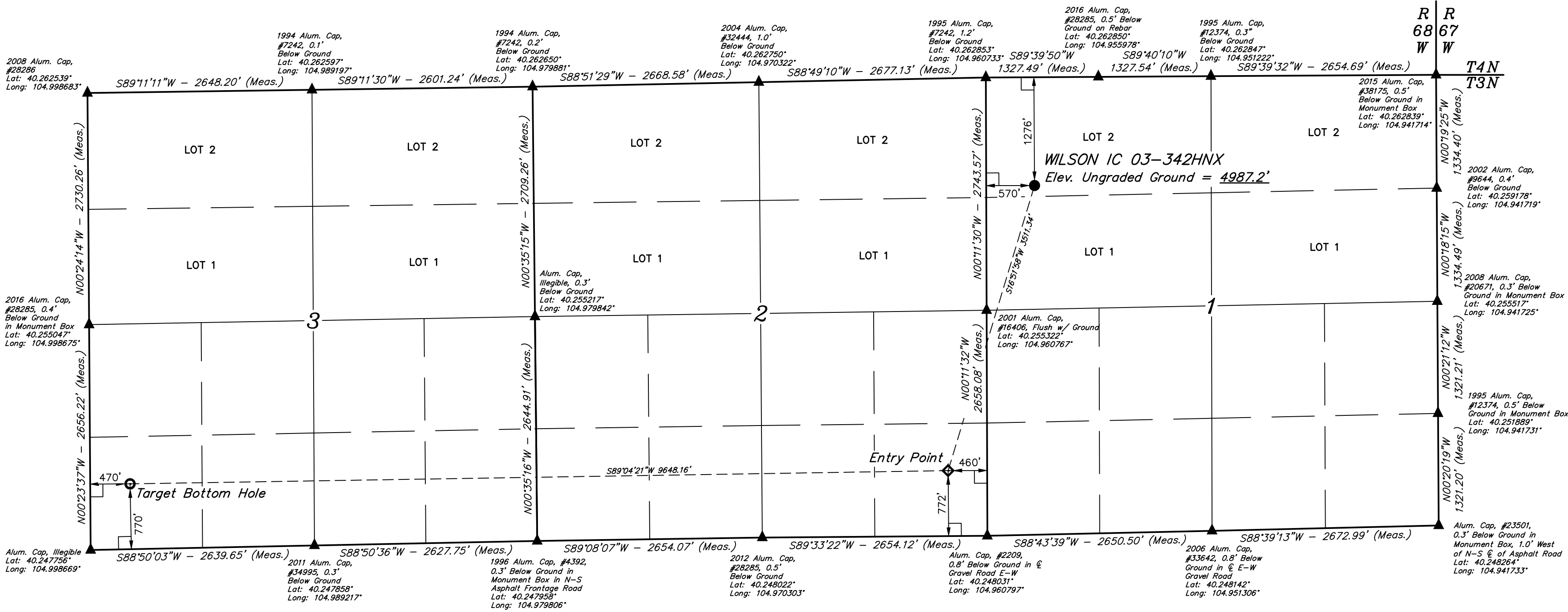
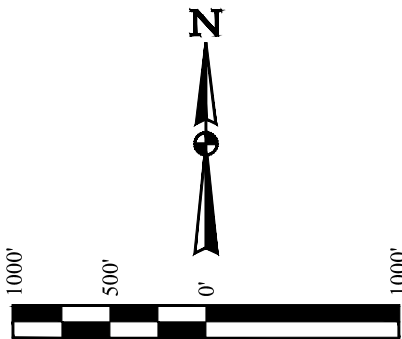


WILSON IC 03-342HNX
NW 1/4 NW 1/4, SECTION 1, T3N, R68W, 6th P.M.
WELD COUNTY, COLORADO

BASIS OF BEARINGS
BASIS OF ELEVATION
USGS COOPERATIVE BASE NETWORK CONTROL STATION,
DESIGNATION 'VERMILYEA'. NGS DATA SHEET LISTS THE NAVD
88 ELEVATION AS BEING 5026 FEET.




LEGEND:
= 90° SYMBOL
= PROPOSED WELLHEAD.
= TARGET BOTTOM HOLE.
= ENTRY POINT.
= SECTION CORNERS LOCATED. (NAD 83)

NAD 83 (SURFACE LOCATION)	NAD 83 (ENTRY POINT)	NAD 83 (TARGET BOTTOM HOLE)
LATITUDE = 40°15'33.66" (40.259350)	LATITUDE = 40°15'00.53" (40.250147)	LATITUDE = 40°14'59.60" (40.249889)
LONGITUDE = 104°57'31.34" (104.958706)	LONGITUDE = 104°57'44.77" (104.962436)	LONGITUDE = 104°59'49.16" (104.996989)
NAD 27 (SURFACE LOCATION)	NAD 27 (ENTRY POINT)	NAD 27 (TARGET BOTTOM HOLE)
LATITUDE = 40°15'33.71" (40.259364)	LATITUDE = 40°15'00.59" (40.250164)	LATITUDE = 40°14'59.65" (40.249903)
LONGITUDE = 104°57'29.43" (104.958175)	LONGITUDE = 104°57'42.85" (104.961903)	LONGITUDE = 104°59'47.23" (104.996453)

CERTIFICATE OF REGISTRATION
THIS IS TO CERTIFY THAT THE ABOVE IS A TRUE AND CORRECT COPY OF THE NOTES OF ACTUAL SURVEYS MADE BY ME OR UNDER MY SUPERVISION AND THAT THE SAME ARE TRUE AND CORRECT TO THE BEST OF MY KNOWLEDGE AND BELIEF.
REGISTERED LAND SURVEYOR
RECEIVED JANUARY 28, 2016
STATE OF COLORADO

REV: 2 11-14-16 L.C.S. (NAME, EP & TBH CHANGE)



U.S. Geological Survey

UELS, LLC
Corporate Office * 85 South 200 East
Vernal, UT 84078 * (435) 789-1017

SURVEYED BY ZANE BULLARD, G.W.
DRAWN BY M.F.D.

04-11-16
07-21-16
SCALE
1" = 1000'

WELL LOCATION PLAT