



July 17, 2017

Colorado Oil and Gas Conservation Commission  
1120 Lincoln Street, Suite 801  
Denver, CO 80203

**RE: Proposed Wellbore Spacing Unit**  
Wilson IC 03-262HN  
Niobrara New Drill  
NWNW Sec. 1, Township 3N, Range 68W, 6<sup>th</sup> P.M.  
Weld County, Colorado

Dear Director Lepore,

Great Western Operating Company, LLC (Great Western) is planning to drill the above captioned well in accordance with the provisions of Colorado Oil and Gas Conservation Commission (COGCC) Rule 318A.e.

Great Western's proposed wellbore spacing unit consists of:

Township 3N, Range 68W (Weld County):  
Section 2: S/2  
Section 3: S/2

Total Acres: 640 ac

The 30 day notification time period has passed and we have not yet received any objections to such well locations or proposed spacing unit, therefore Great Western hereby requests the Director to approve the above mentioned well. Great Western respectfully requests the COGCC review the enclosed map illustrating the proposed wellbore spacing unit.

Respectfully,

*Ashley Noonan*

**Ashley Noonan**  
Senior Regulatory Analyst  
Great Western Operating Company, LLC

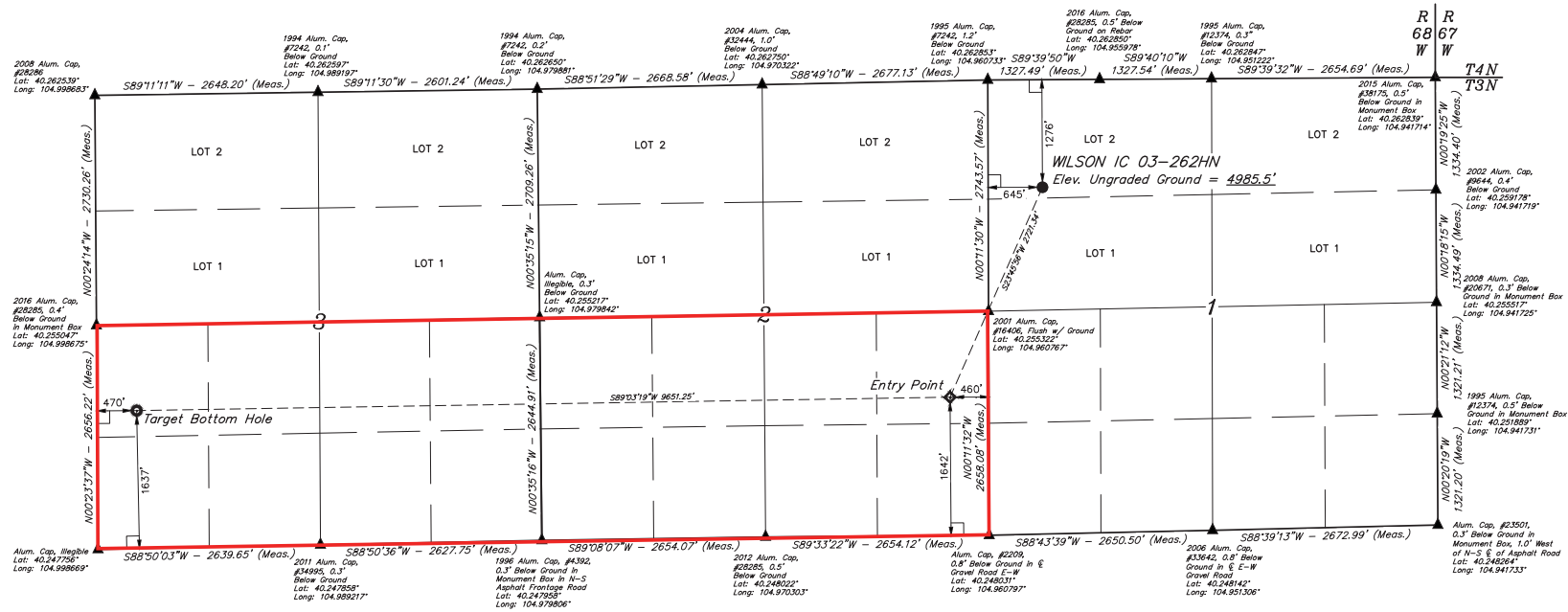
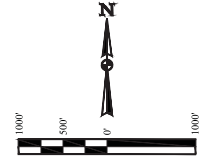
T3N, R68W, 6th P.M.

GREAT WESTERN OPERATING COMPANY

WILSON IC 03-262HN  
NW 1/4 NW 1/4, SECTION 1, T3N, R68W, 6th P.M.  
WELD COUNTY, COLORADO

BASIS OF BEARINGS  
BASIS OF ELEVATION

USGS COOPERATIVE BASE NETWORK CONTROL STATION,  
DESIGNATION 'VERMILYEA'. NGS DATA SHEET LISTS THE NAVD  
88 ELEVATION AS BEING 5026 FEET.



LEGEND:  
 — = 90° SYMBOL  
 ● = PROPOSED WELLHEAD.  
 ○ = TARGET BOTTOM HOLE.  
 ◆ = ENTRY POINT.  
 ▲ = SECTION CORNERS LOCATED. (NAD 83)

PDOP = 1.9

| NAD 83 (SURFACE LOCATION)              | NAD 83 (ENTRY POINT)                   | NAD 83 (TARGET BOTTOM HOLE)            |
|--|--|--|
| LATITUDE = 40°19'33.68" (40.259347)    | LATITUDE = 40°19'59.12" (40.252333)    | LATITUDE = 40°19'58.16" (40.252267)    |
| LONGITUDE = 104°57'40.38" (104.958439) | LONGITUDE = 104°57'44.53" (104.962425) | LONGITUDE = 104°59'49.16" (104.996989) |
| NAD 27 (SURFACE LOCATION)              | NAD 27 (ENTRY POINT)                   | NAD 27 (TARGET BOTTOM HOLE)            |
| LATITUDE = 40°19'33.71" (40.259346)    | LATITUDE = 40°19'59.18" (40.252350)    | LATITUDE = 40°19'58.22" (40.252283)    |
| LONGITUDE = 104°57'28.46" (104.957966) | LONGITUDE = 104°57'42.81" (104.961892) | LONGITUDE = 104°59'47.34" (104.996456) |

CERTIFICATE  
 THIS IS TO CERTIFY THAT THE ABOVE INFORMATION IS A TRUE AND CORRECT COPY OF THE ORIGINAL SURVEY RECORDS AND THAT THE SAME ARE TRUE AND CORRECT TO THE BEST OF MY KNOWLEDGE AND BELIEF.  
 REGISTERED LAND SURVEYOR  
 STATE OF COLORADO  
 EXPIRATION DATE 12/31/2016

REV: 2 11-14-16 L.C.S. (NAME, EP & TBH CHANGE)

**UINTEAH**  
 Corporate Office • 85 South 200 East  
 Vernal, UT 84078 • (435) 789-1017

DESIGNED BY: ZANE BULLARD, G.W.  
 DRAWN BY: M.F.D.

DATE: 04-11-16  
 SCALE: 1" = 1000'

**WELL LOCATION PLAT**