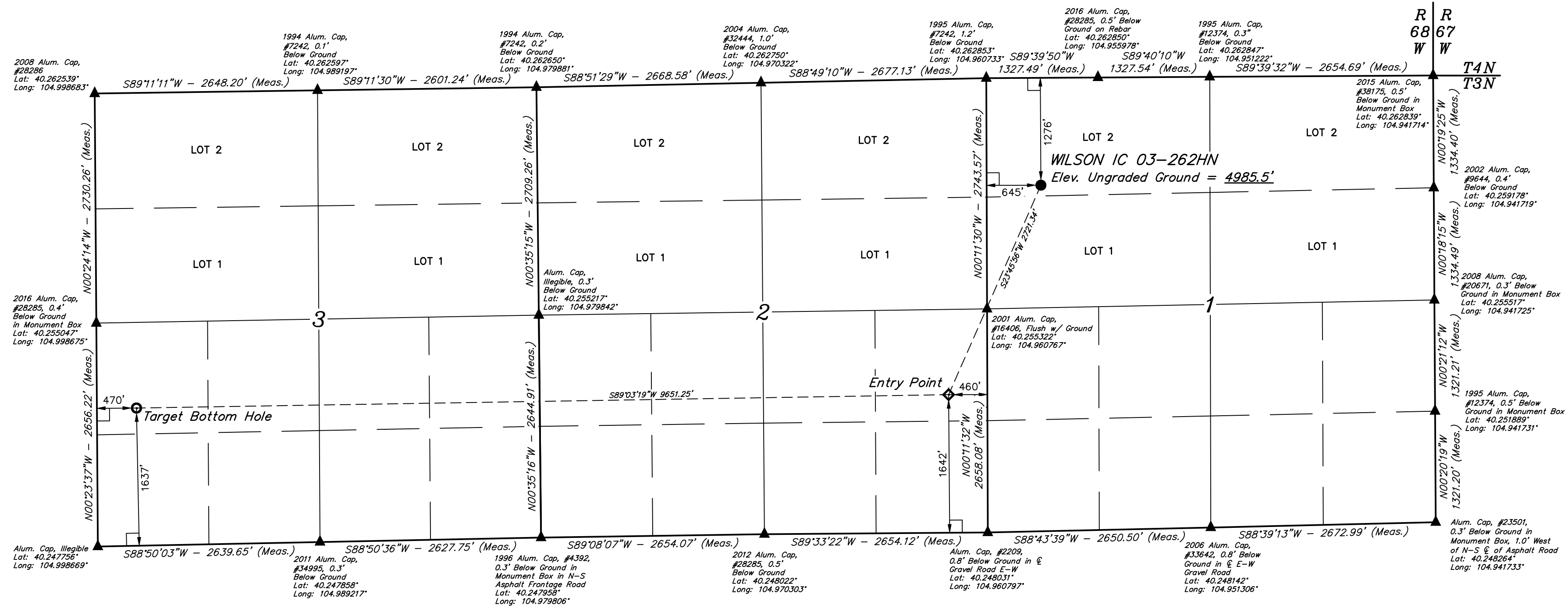
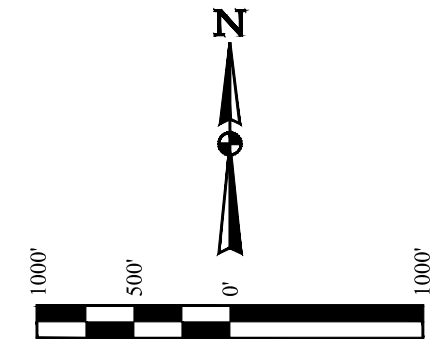


WILSON IC 03-262HN  
 NW 1/4 NW 1/4, SECTION 1, T3N, R68W, 6th P.M.  
 WELD COUNTY, COLORADO

BASIS OF BEARINGS  
 BASIS OF ELEVATION

USGS COOPERATIVE BASE NETWORK CONTROL STATION,  
 DESIGNATION 'VERMILYEA'. NGS DATA SHEET LISTS THE NAVD  
 88 ELEVATION AS BEING 5026 FEET.



CERTIFICATE OF REGISTRATION  
 THIS IS TO CERTIFY THAT THE ABOVE DESCRIBED SURVEY WAS MADE BY ME OR UNDER MY SUPERVISION AND THAT THE SAME ARE TRUE AND CORRECT TO THE BEST OF MY KNOWLEDGE AND BELIEF.

REGISTERED LAND SURVEYOR  
 REGISTRATION NO. 28285  
 STATE OF COLORADO

REV: 2 11-14-16 L.C.S. (NAME, EP & TBH CHANGE)

LEGEND:  
 □ = 90° SYMBOL  
 ● = PROPOSED WELLHEAD.  
 ○ = TARGET BOTTOM HOLE.  
 ◆ = ENTRY POINT.  
 ▲ = SECTION CORNERS LOCATED. (NAD 83)

PDOP = 1.9		
NAD 83 (SURFACE LOCATION)	NAD 83 (ENTRY POINT)	NAD 83 (TARGET BOTTOM HOLE)
LATITUDE = 40°15'33.65" (40.259347)	LATITUDE = 40°15'09.12" (40.252533)	LATITUDE = 40°15'08.16" (40.252267)
LONGITUDE = 104°57'30.38" (104.958439)	LONGITUDE = 104°57'44.73" (104.962425)	LONGITUDE = 104°59'49.16" (104.996989)
NAD 27 (SURFACE LOCATION)	NAD 27 (ENTRY POINT)	NAD 27 (TARGET BOTTOM HOLE)
LATITUDE = 40°15'33.71" (40.259364)	LATITUDE = 40°15'09.18" (40.252550)	LATITUDE = 40°15'08.22" (40.252283)
LONGITUDE = 104°57'28.46" (104.957906)	LONGITUDE = 104°57'42.81" (104.961892)	LONGITUDE = 104°59'47.24" (104.996456)

UJINTAH  
 ENGINEERING & LAND SURVEYING

UJELLS, LLC  
 Corporate Office \* 85 South 200 East  
 Vernal, UT 84078 \* (435) 789-1017

SURVEYED BY ZANE BULLARD, G.W. 04-11-16 SCALE  
 DRAWN BY M.F.D. 07-21-16 1" = 1000'

WELL LOCATION PLAT