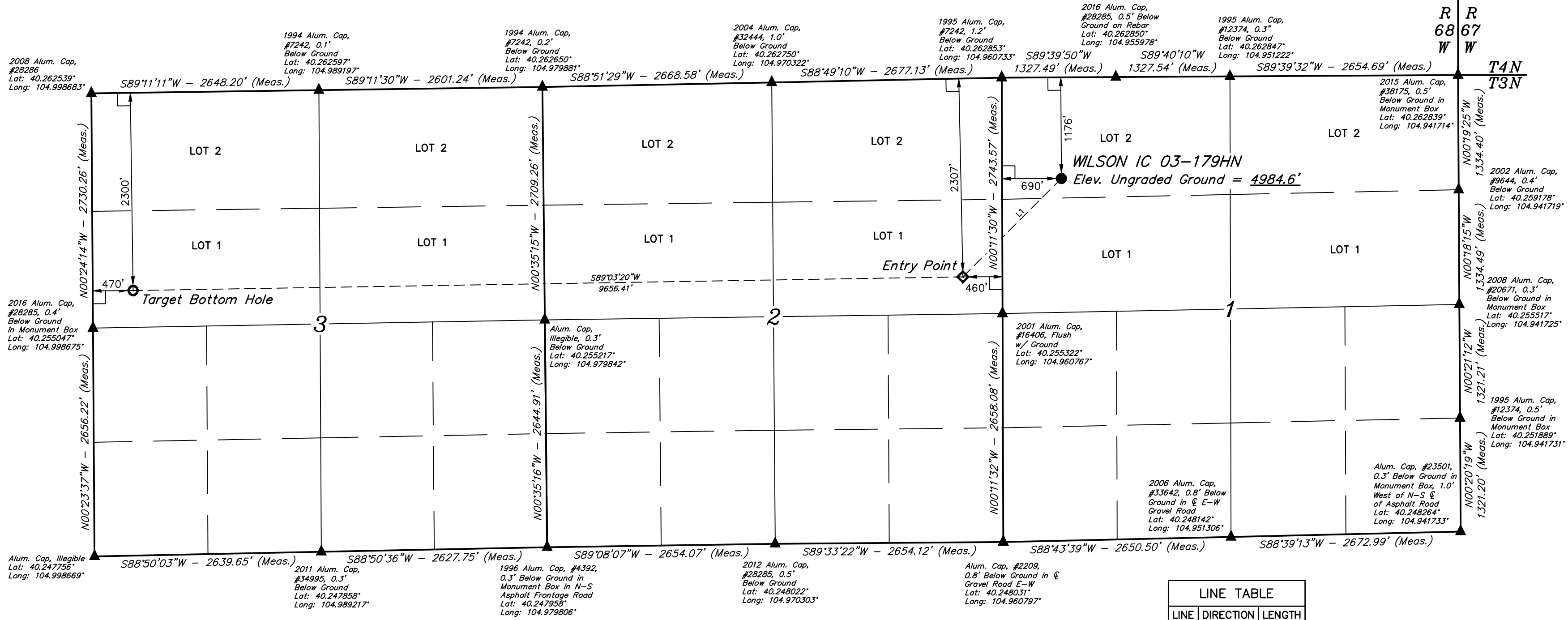
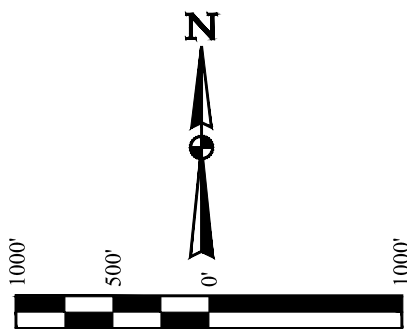


WILSON IC 03-179HN
NW 1/4 NW 1/4, SECTION 1, T3N, R68W, 6th P.M.
WELD COUNTY, COLORADO

BASIS OF BEARINGS
BASIS OF BEARINGS IS A GPS OBSERVATION

BASIS OF ELEVATION
USGS COOPERATIVE BASE NETWORK CONTROL STATION,
DESIGNATION 'VERMILYEA'. NGS DATA SHEET LISTS THE NAVD
88 ELEVATION AS BEING 5026 FEET.



LINE TABLE		
LINE	DIRECTION	LENGTH
L1	S45°02'43"W	1619.66'

LEGEND:

— = 90° SYMBOL

● = PROPOSED WELLHEAD.

○ = TARGET BOTTOM HOLE.

◆ = ENTRY POINT.

▲ = SECTION CORNERS LOCATED. (NAD 83)

CERTIFICATE OF RECORDING
THIS IS TO CERTIFY THAT THE ABOVE DESCRIBED SURVEY WAS MADE BY THE UNDERSIGNED LAND SURVEYOR IN ACCORDANCE WITH THE COLORADO LAND SURVEYING ACT, AND THAT THE SAME ARE TRUE AND CORRECT TO THE BEST OF HIS KNOWLEDGE AND BELIEF.

REGISTERED LAND SURVEYOR
RECORDING NO. 28285
STATE OF COLORADO

REV: 2 11-14-16 L.C.S. (ADD EP, TBH & NAME CHANGE)

PDOP = 1.4

NAD 83 (SURFACE LOCATION)	NAD 83 (ENTRY POINT)	NAD 83 (TARGET BOTTOM HOLE)
LATITUDE = 40°15'34.64" (40.259622)	LATITUDE = 40°15'23.41" (40.256503)	LATITUDE = 40°15'22.45" (40.256236)
LONGITUDE = 104°57'29.79" (104.958275)	LONGITUDE = 104°57'44.67" (104.962408)	LONGITUDE = 104°59'49.18" (104.996994)
NAD 27 (SURFACE LOCATION)	NAD 27 (ENTRY POINT)	NAD 27 (TARGET BOTTOM HOLE)
LATITUDE = 40°15'34.70" (40.259639)	LATITUDE = 40°15'23.47" (40.256519)	LATITUDE = 40°15'22.51" (40.256253)
LONGITUDE = 104°57'27.87" (104.957742)	LONGITUDE = 104°57'42.75" (104.961875)	LONGITUDE = 104°59'47.25" (104.996458)

UINTEAH
ENGINEERING & LAND SURVEYING

UELS, LLC
Corporate Office * 85 South 200 East
Vernal, UT 84078 * (435) 789-1017

SURVEYED BY ZANE BULLARD, G.W.
DRAWN BY M.F.D.

04-11-16
07-21-16

SCALE
1" = 1000'

WELL LOCATION PLAT