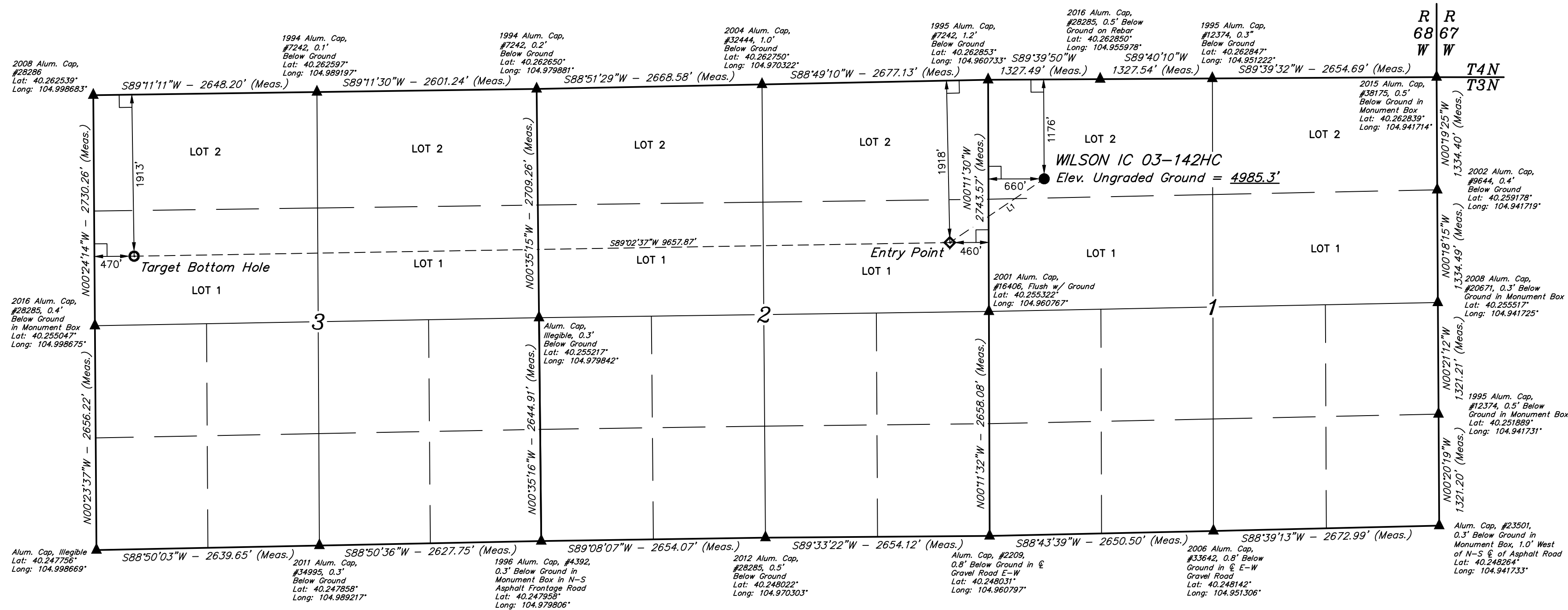
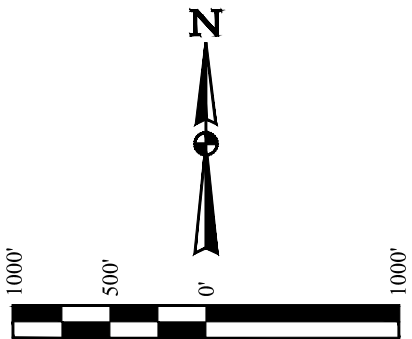


GREAT WESTERN OPERATING COMPANY

WILSON IC 03-142HC
NW 1/4 NW 1/4, SECTION 1, T3N, R68W, 6th P.M.
WELD COUNTY, COLORADO


BASIS OF BEARINGS
BASIS OF BEARINGS IS A G.P.S. OBSERVATION

BASIS OF ELEVATION
USGS COOPERATIVE BASE NETWORK CONTROL STATION,
DESIGNATION 'VERMILYEA'. NGS DATA SHEET LISTS THE NAVD
88 ELEVATION AS BEING 5026 FEET.



CERTIFICATE

THIS IS TO CERTIFY THAT THE ABOVE DATA WAS PREPARED FROM FIELD NOTES OF ACTUAL SURVEYS MADE BY ME OR UNDER MY SUPERVISION, AND THAT THE SAME ARE TRUE AND CORRECT TO THE BEST OF MY KNOWLEDGE AND BELIEF.



REGISTERED LAND SURVEYOR
REGISTRATION NO. 28285
STATE OF COLORADO
11-14-16

REV: 2 11-14-16 L.C.S. (NAME, EP & TBH CHANGE

LEGEND:

└ = 90° SYMBOL

● = PROPOSED WELLHEAD.

○ = TARGET BOTTOM HOLE.

◆ = ENTRY POINT.

▲ = SECTION CORNERS LOCATED. (NAD 83)

LINE TABLE			NAD 83 (SURFACE LOCATION)	NAD 83 (ENTRY POINT)	NAD 83 (TARGET BOTTOM HOLE)
LINE	DIRECTION	LENGTH	LATITUDE = 40°15'34.64" (104.259622)	LATITUDE = 40°15'27.25" (104.257569)	LATITUDE = 40°15'26.28" (104.257300)
			LONGITUDE = 104°57'30.18" (104.958383)	LONGITUDE = 104°57'44.65" (104.962403)	LONGITUDE = 104°59'49.18" (104.996994)
NAD 27 (SURFACE LOCATION)			NAD 27 (ENTRY POINT)	NAD 27 (TARGET BOTTOM HOLE)	
L1	S55°56'56"W	1348.74'	LATITUDE = 40°15'34.70" (104.259639)	LATITUDE = 40°15'27.31" (104.257586)	LATITUDE = 40°15'26.33" (104.257314)
			LONGITUDE = 104°57'28.26" (104.959780)	LONGITUDE = 104°57'42.73" (104.961869)	LONGITUDE = 104°59'47.26" (104.996461)

PDOP = 1.4



UINTAH
ENGINEERING & LAND SURVEYING

UELS, LLC
Corporate Office * 85 South 200 East
Vernal, UT 84078 * (435) 789-1017

SURVEYED BY	ZANE BULLARD, G.W.	04-11-16	SCALE
DRAWN BY	M.F.D.	07-21-16	1" = 1000'

WELL LOCATION PLAT