

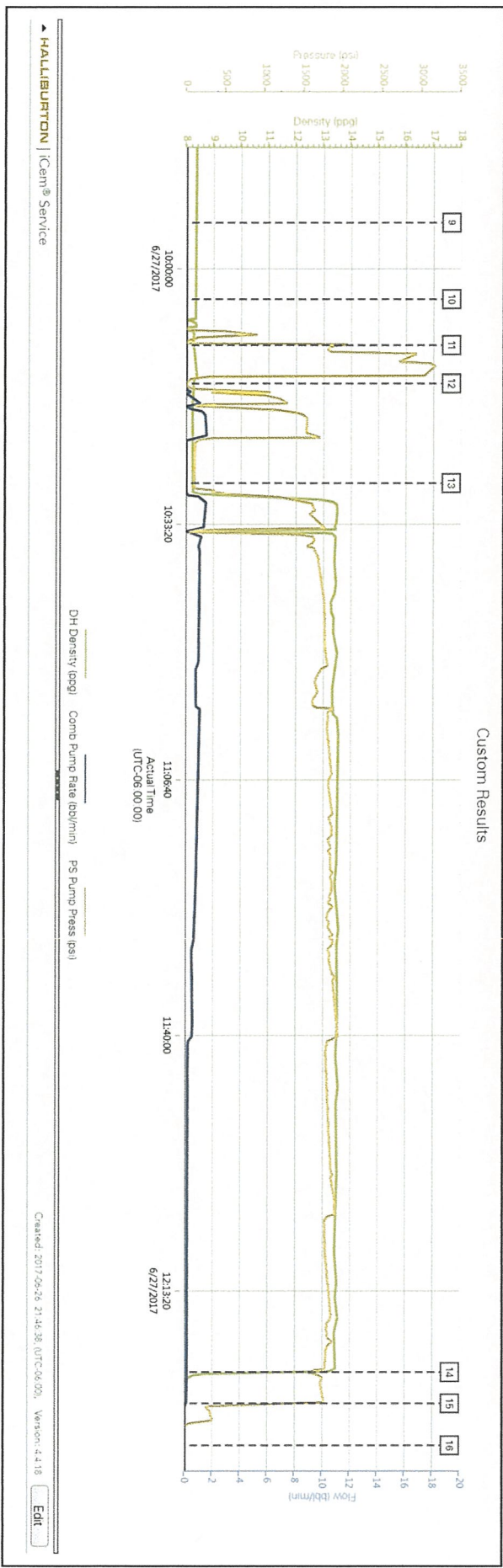
## Cementing Job Summary

The Road to Excellence Starts with Safety

Sold To #: 304535		Ship To #: 3807985		Quote #:		Sales Order #: 0904125093				
Customer: PDC ENERGY - EBUS				Customer Rep: BUD HOLMAN						
Well Name: Sauer		Well #: 33-31D		API/UWI #:						
Field:		City (SAP): JOHNSTOWN		County/Parish: WELD		State: COLORADO				
Legal Description:										
Contractor: ENSIGN DRLG				Rig/Platform Name/Num: ENSIGN 356						
Job BOM: 7526 7526										
Well Type: GAS										
Sales Person: HALAMERICA/H139013				Srvc Supervisor: Vitalijs Neverdasovs						
Job										
Formation Name										
Formation Depth (MD)		Top		Bottom						
Form Type				BHST						
Job depth MD		5186ft		Job Depth TVD						
Water Depth				Wk Ht Above Floor						
Perforation Depth (MD)		From		To						
Well Data										
Description	New / Used	Size in	ID in	Weight lbm/ft	Thread	Grade	Top MD ft	Bottom MD ft	Top TVD ft	Bottom TVD ft
Open Hole Section			10				0	560		
Casing		4.5	4.052	10.5			0	3500		0
Tubing		1.25	1				0	5186		0
Fluid Data										
Stage/Plug #: 1										
Fluid #	Stage Type	Fluid Name		Qty	Qty UoM	Mixing Density lbm/gal	Yield ft <sup>3</sup> /sack	Mix Fluid Gal	Rate bbl/min	Total Mix Fluid Gal
1	13.5# FracCem 6000'	FRACCEM (TM) SYSTEM		560	sack	13.5	1.42		1.5	6.81
6.81 Gal		FRESH WATER								
Cement Left In Pipe										
Amount	0		Reason							
Comment Had to pump job @ 1.5 bpm due to high pressure										

2.0 Attachments

2.1 Case 1-Custom Results (1).png







# Job Summary

Ticket Number		Ticket Date	
TN#	FL1964	6/28/2017	
COUNTY	COMPANY	API Number	
Weld	PDC Energy, Inc.	05-123-20511	
WELL NAME	RIG	JOB TYPE	
Sauer 33-31D	Ensign 356	Annular Fill	
SURFACE WELL LOCATION	O-TEX Field Supervisor	CUSTOMER REP	
NE SE 31:5N:67W	Cheal, Sam	Bud Holman	
EMPLOYEES			
Watkins, Robert			
Kopp, Jeff			
Laslie, Larry			
WELL PROFILE			
Max Treating Pressure (psi):	2000	Bottom Hole Static Temperature (°F):	80
Bottom Hole Circulating Temperature (°F):		Well Type:	Oil

## Open Hole

1	Size (in)	TMD From (ft)	TMD to (ft)	TVD From (Ft)	TVD to (Ft)
	10	393	617	393	617
2	Size (in)	TMD From (ft)	TMD to (ft)	TVD From (Ft)	TVD to (Ft)

## Casing/Tubing/Drill Pipe

Type	Size (in)	Weight (lb/ft)	Grade	TMD From (ft)	TMD to (ft)	TVD From (Ft)	TVD to (Ft)
Surface	8 5/8	24	J-55	0	393	0	393
Type	Size (in)	Weight (lb/ft)	Grade	TMD From (ft)	TMD to (ft)	TVD From (Ft)	TVD to (Ft)
Production	4 1/2	10.5	P-110	0	7428	0	7428
Type	Size (in)	Weight (lb/ft)		TMD From (ft)	TMD to (ft)	TVD From (Ft)	TVD to (Ft)
Tubing	1 1/4	3.02		0	617	0	617

## CEMENT DATA

Stage 1:  
Type: Plug

From Depth (ft): 0 To Depth (ft): 617

Volume (sacks): 190 Volume (bbls): 38.9

### Cement & Additives:

	Density (ppg)	Yield (ft³/sk)	Water Req.
100% Class G	15.8	1.15	5.00

## SUMMARY

Preflushes: 20 bbls of Fresh Water		Stage 1	
bbls of		Calculated Displacement (bbl):	
bbls of		Actual Displacement (bbl):	
Total Preflush/Spacer Volume (bbl):	20	Plug Bump (Y/N):	N/A
Total Slurry Volume (bbl):	38.9	Lost Returns (Y/N):	No (if Y, when)
Total Fluid Pumped	58.9	Bump Pressure (psi):	N/A
Returns to Surface:	Cement		

Job Notes (fluids pumped / procedures / tools / etc.):

Annular Fill - Pumped 20bbls fresh water, Mixed / pumped 190 sacks (38.9bbls) @15.8ppg, cement to surface, Rig pulled 1 1/4" tubing out, topped off annular with cement, cement to surface. Pumped job as per program / customers request.

Thank You For Using

O - TEX Pumping

Customer Representative Signature:



[illegible]