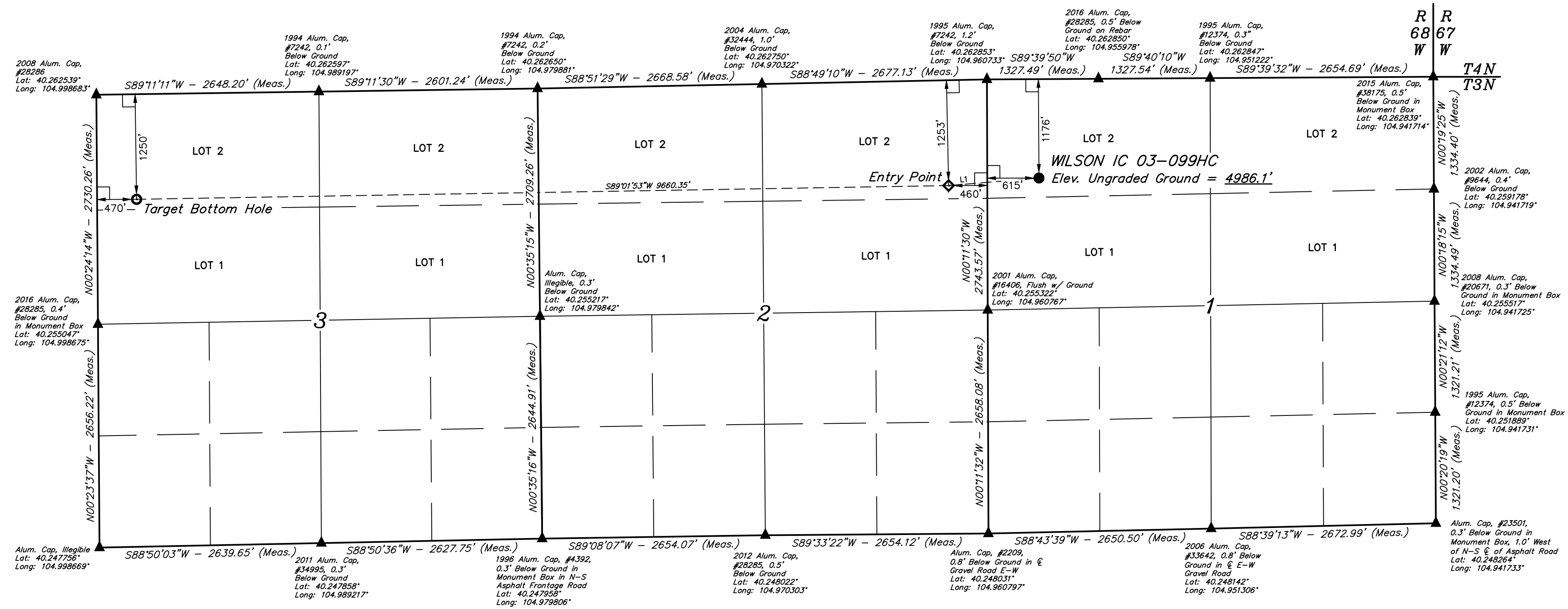
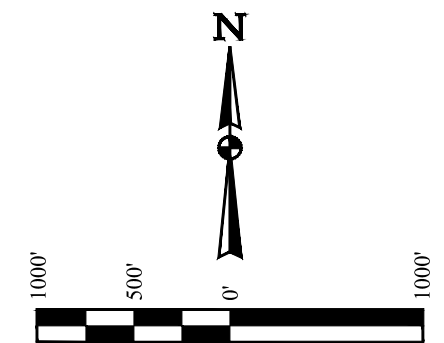


WILSON IC 03-099HC  
NW 1/4 NW 1/4, SECTION 1, T3N, R68W, 6th P.M.  
WELD COUNTY, COLORADO

BASIS OF BEARINGS  
BASIS OF ELEVATION

USGS COOPERATIVE BASE NETWORK CONTROL STATION,  
DESIGNATION 'VERMILYEA'. NGS DATA SHEET LISTS THE NAVD  
88 ELEVATION AS BEING 5026 FEET.



CERTIFICATE OF REGISTRATION  
THIS IS TO CERTIFY THAT THE ABOVE DESCRIBED SURVEY WAS MADE BY ME OR UNDER MY SUPERVISION AND THAT THE SAME ARE TRUE AND CORRECT TO THE BEST OF MY KNOWLEDGE AND BELIEF.

REGISTERED LAND SURVEYOR  
RECEIVED NO. 28285  
STATE OF COLORADO

REV: 2 11-14-16 L.C.S. (NAME, EP & TBH CHANGE)

- LEGEND:**
- = 90° SYMBOL
  - = PROPOSED WELLHEAD.
  - = TARGET BOTTOM HOLE.
  - ◇ = ENTRY POINT.
  - ▲ = SECTION CORNERS LOCATED. (NAD 83)

LINE TABLE		
LINE	DIRECTION	LENGTH
L1	S85°12'58"W	1078.47'

NAD 83 (SURFACE LOCATION)		NAD 83 (ENTRY POINT)		NAD 83 (TARGET BOTTOM HOLE)	
LATITUDE = 40°15'34.64" (40.259622)	LATITUDE = 40°15'33.82" (40.259394)	LATITUDE = 40°15'32.83" (40.259119)	LATITUDE = 40°15'33.82" (40.259394)	LATITUDE = 40°15'32.83" (40.259119)	LATITUDE = 40°15'32.83" (40.259119)
LONGITUDE = 104°57'30.76" (104.958544)	LONGITUDE = 104°57'44.62" (104.962394)	LONGITUDE = 104°59'49.19" (104.996997)	LONGITUDE = 104°57'44.62" (104.962394)	LONGITUDE = 104°59'49.19" (104.996997)	LONGITUDE = 104°59'49.19" (104.996997)
LATITUDE = 40°15'34.70" (40.259639)	LATITUDE = 40°15'33.88" (40.259411)	LATITUDE = 40°15'32.88" (40.259133)	LATITUDE = 40°15'34.70" (40.259639)	LATITUDE = 40°15'32.88" (40.259133)	LATITUDE = 40°15'32.88" (40.259133)
LONGITUDE = 104°57'28.84" (104.958011)	LONGITUDE = 104°57'42.71" (104.961864)	LONGITUDE = 104°59'47.26" (104.996461)	LONGITUDE = 104°57'28.84" (104.958011)	LONGITUDE = 104°59'47.26" (104.996461)	LONGITUDE = 104°59'47.26" (104.996461)

PDOP = 1.4

**UINTEAH**  
CORPORATE OFFICE • 85 SOUTH 200 EAST  
VERNAL, UT 84078 • (435) 789-1017

REG. NO. 28285  
STATE OF COLORADO

**WELL LOCATION PLAT**

SURVEYED BY: ZANE BULLARD, G.W. 04-11-16 SCALE: 1" = 1000'  
DRAWN BY: M.F.D. 07-21-16