



July 17, 2017

Colorado Oil and Gas Conservation Commission
1120 Lincoln Street, Suite 801
Denver, CO 80203

RE: Proposed Wellbore Spacing Unit
Wilson IC 03-062HN
Niobrara New Drill
NWNW Sec. 1, Township 3N, Range 68W, 6th P.M.
Weld County, Colorado

Dear Director Lepore,

Great Western Operating Company, LLC (Great Western) is planning to drill the above captioned well in accordance with the provisions of Colorado Oil and Gas Conservation Commission (COGCC) Rule 318A.e.

Great Western's proposed wellbore spacing unit consists of:

Township 3N, Range 68W (Weld County):
Section 2: N/2N/2
Section 3: N/2N/2

Total Acres: 330 ac

The 30 day notification time period has passed and we have not yet received any objections to such well locations or proposed spacing unit, therefore Great Western hereby requests the Director to approve the above mentioned well. Great Western respectfully requests the COGCC review the enclosed map illustrating the proposed wellbore spacing unit.

Respectfully,

Ashley Noonan

Ashley Noonan
Senior Regulatory Analyst
Great Western Operating Company, LLC

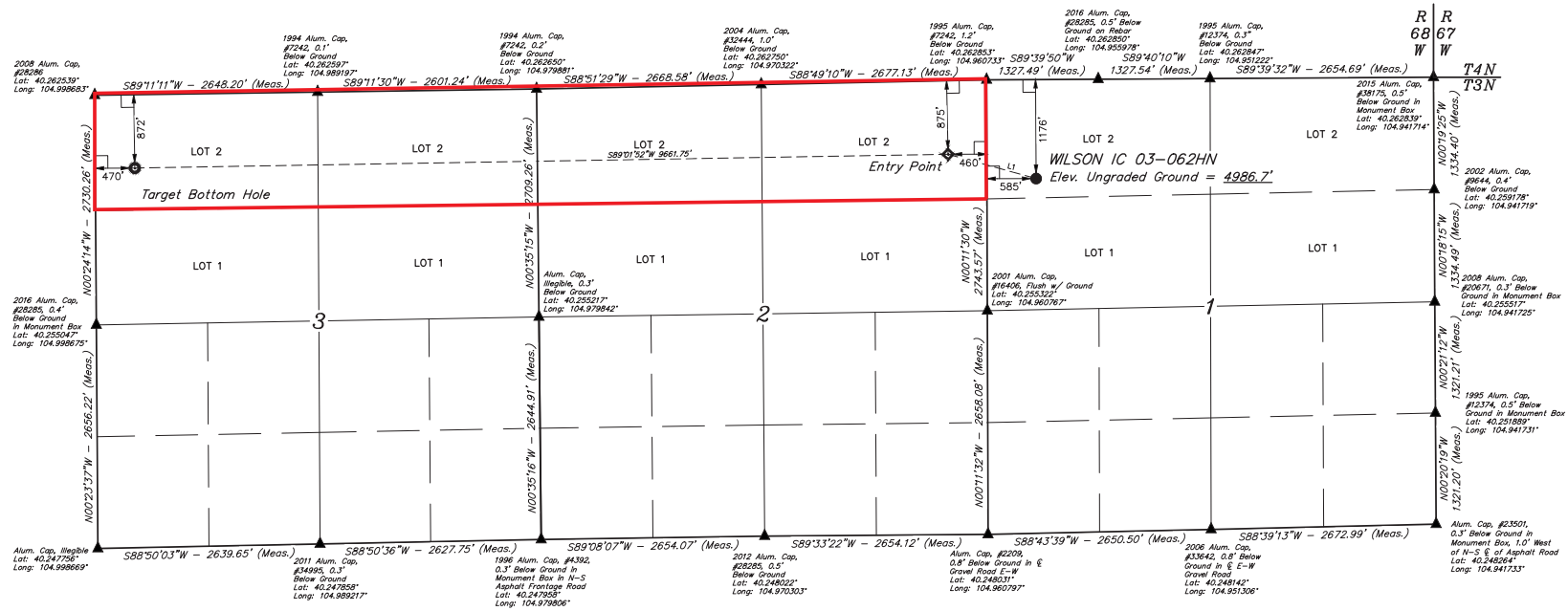
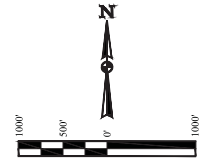
T3N, R68W, 6th P.M.

GREAT WESTERN OPERATING COMPANY

WILSON IC 03-062HN
NW 1/4 NW 1/4, SECTION 1, T3N, R68W, 6th P.M.
WELD COUNTY, COLORADO

BASIS OF BEARINGS
BASIS OF ELEVATION

USGS COOPERATIVE BASE NETWORK CONTROL STATION,
DESIGNATION 'VERMILYEA'. NGS DATA SHEET LISTS THE NAVD
88 ELEVATION AS BEING 5026 FEET.



CERTIFICATE
THIS IS TO CERTIFY THAT THE ABOVE
NOTES OF ACTUAL SURVEYS MADE BY
AND THAT THE SAME ARE TRUE AND
KNOWLEDGE AND BELIEF.
REGISTERED LAND SURVEYOR
RECEIVED NO. 2024
STATE OF COLORADO
JANUARY 16, 2024

REV: 2 11-14-16 L.C.S. (EP & TBH CHANGE)

PDOP = 1.4

LINE TABLE			NAD 83 (SURFACE LOCATION)	NAD 83 (ENTRY POINT)	NAD 83 (TARGET BOTTOM HOLE)
LINE	DIRECTION	LENGTH	LATITUDE = 40°15'34.64" (40.259622) LONGITUDE = 104°57'31.15" (104.958653)	LATITUDE = 40°15'37.56" (40.260433) LONGITUDE = 104°57'44.61" (104.962392)	LATITUDE = 40°15'36.56" (40.260156) LONGITUDE = 104°59'40.19" (104.996907)
LINE	DIRECTION	LENGTH	NAD 27 (SURFACE LOCATION) LATITUDE = 40°15'34.70" (40.259639) LONGITUDE = 104°57'29.23" (104.958119)	NAD 27 (ENTRY POINT) LATITUDE = 40°15'37.62" (40.260450) LONGITUDE = 104°57'42.69" (104.961858)	NAD 27 (TARGET BOTTOM HOLE) LATITUDE = 40°15'36.62" (40.260172) LONGITUDE = 104°59'47.27" (104.996444)

UELS, LLC
Corporate Office • 85 South 200 East
Vernal, UT 84078 • (435) 789-1017
SURVEYED BY ZANE BULLARD, G.W.
DRAWN BY M.F.D.
WELL LOCATION PLAT
04-11-16
07-21-16
SCALE
1" = 1000'

LEGEND:
= 90° SYMBOL
● = PROPOSED WELLHEAD.
● = TARGET BOTTOM HOLE.
● = ENTRY POINT.
▲ = SECTION CORNERS LOCATED. (NAD 83)