

# Inspection Photos

7/31/2017

Operator: WHITING OIL & GAS CORPORATION -  
96155

Location ID: 442134

Inspection Doc. Number: 675103778  
Weld County, CO

Aaron Trujillo  
NE Reclamation Specialist  
COGCC

Inspection Photos  
Operator: WHITING OIL & GAS CORPORATION - 96155  
Location ID: 442134



**Photo 1:** Photo taken from the south end of the location, facing west. Photo shows culvert and cattle guard.



**Photo 2:** Photo taken from the south end of the location, facing east. Photo shows the west end of the culvert at the access road. Photo shows stormwater erosion has begun to incise the perimeter ditch at the culvert. Culvert does not appear to have sufficient outlet protection.

Inspection Photos  
Operator: WHITING OIL & GAS CORPORATION - 96155  
Location ID: 442134



**Photo 3:** Photo taken from the south end of the location. Photo shows sediment trap. Trap appears to either have filled with sediment, or constructed with a shallow depth.



**Photo 4:** Photo taken from the south end of the location. Photo shows sediment trap. Photo shows stormwater erosion has begun to erode at the inlets of the trap. Sediment does not appear to have sufficient inlet protection.



Inspection Photos  
Operator: WHITING OIL & GAS CORPORATION - 96155  
Location ID: 442134



**Photo 5:** Photo taken from the southeast end of the location, facing west. Photo shows stormwater control ditch along perimeter of the location. Photo also shows stormwater erosion has begun to incise the perimeter ditch. Advise incorporating velocity check BMPs to mitigate further incision and degradation to the ditch.



**Photo 6:** Photo taken from the southeast end of the location, facing north. Photo shows stormwater control ditch along perimeter of the location. Photo also shows stormwater erosion has begun to incise the perimeter ditch. Advise incorporating velocity check BMPs to mitigate further incision and degradation to the ditch.

Inspection Photos  
Operator: WHITING OIL & GAS CORPORATION - 96155  
Location ID: 442134



**Photo 7:** Photo taken from the storm water ditch on the east end of the location. Photo shows stormwater erosion has compromised the integrity of the ditch. Ditch does not appear to have been sufficiently consolidated. Without adequate consolidation, ditch will increase the sediment laden stormwater runoff from the location.



**Photo 8:** Photo taken from the storm water ditch on the east end of the location. Photo shows stormwater erosion has compromised the integrity of the ditch. Ditch does not appear to have been sufficiently consolidated. Without adequate consolidation, ditch will increase the sediment laden stormwater runoff from the location.



Inspection Photos  
Operator: WHITING OIL & GAS CORPORATION - 96155  
Location ID: 442134



**Photo 9:** Photo taken from the stormwater control ditch on the east end of the location. Photo shows stormwater erosion has begun to incise the perimeter ditch. Advise incorporating velocity check BMPs to mitigate further incision and degradation to the ditch.



**Photo 10:** Photo taken from the topsoil pile on the east end of the location. Photo shows topsoil pile is loose, and does not appear to have sufficient protection; pile appears to be at risk to stormwater and wind erosion.

Inspection Photos  
Operator: WHITING OIL & GAS CORPORATION - 96155  
Location ID: 442134



**Photo 11:** Photo taken from the northeast end of the location, facing south. Photo shows stormwater control ditch along perimeter of the location.



**Photo 12:** Photo taken from the northeast end of the location, facing south. Photo shows stormwater control ditch along perimeter of the location.



Inspection Photos  
Operator: WHITING OIL & GAS CORPORATION - 96155  
Location ID: 442134



**Photo 13:** Photo taken from the north end of the location. Photo shows sediment trap outlet. Sediment appears to be in proper functioning condition.



**Photo 14:** Photo taken from the north end of the location. Photo shows sediment trap inlet. Sediment appears to be in proper functioning condition.





**Photo 15:** Photo taken from the northwest end of the location. Photo shows sediment trap.



**Photo 16:** Photo taken from the northwest end of the location. Photo shows sediment trap. Photo shows stormwater erosion has begun to erode at the inlets of the trap. Sediment does not appear to have sufficient inlet protection

Inspection Photos  
Operator: WHITING OIL & GAS CORPORATION - 96155  
Location ID: 442134



**Photo 17:** Photo taken from the southwest end of the location, facing east. Photo shows sediment trap and stormwater control ditch.



**Photo 18:** Photo taken from the southwest end of the location, facing north. Photo shows sediment trap and stormwater control ditch.





**Photo 19:** Photo taken from the sediment trap on the southwest corner of the location. Photo shows sediment laden stormwater has discharged from the location. Trap does not appear to have sufficient outlet protection.





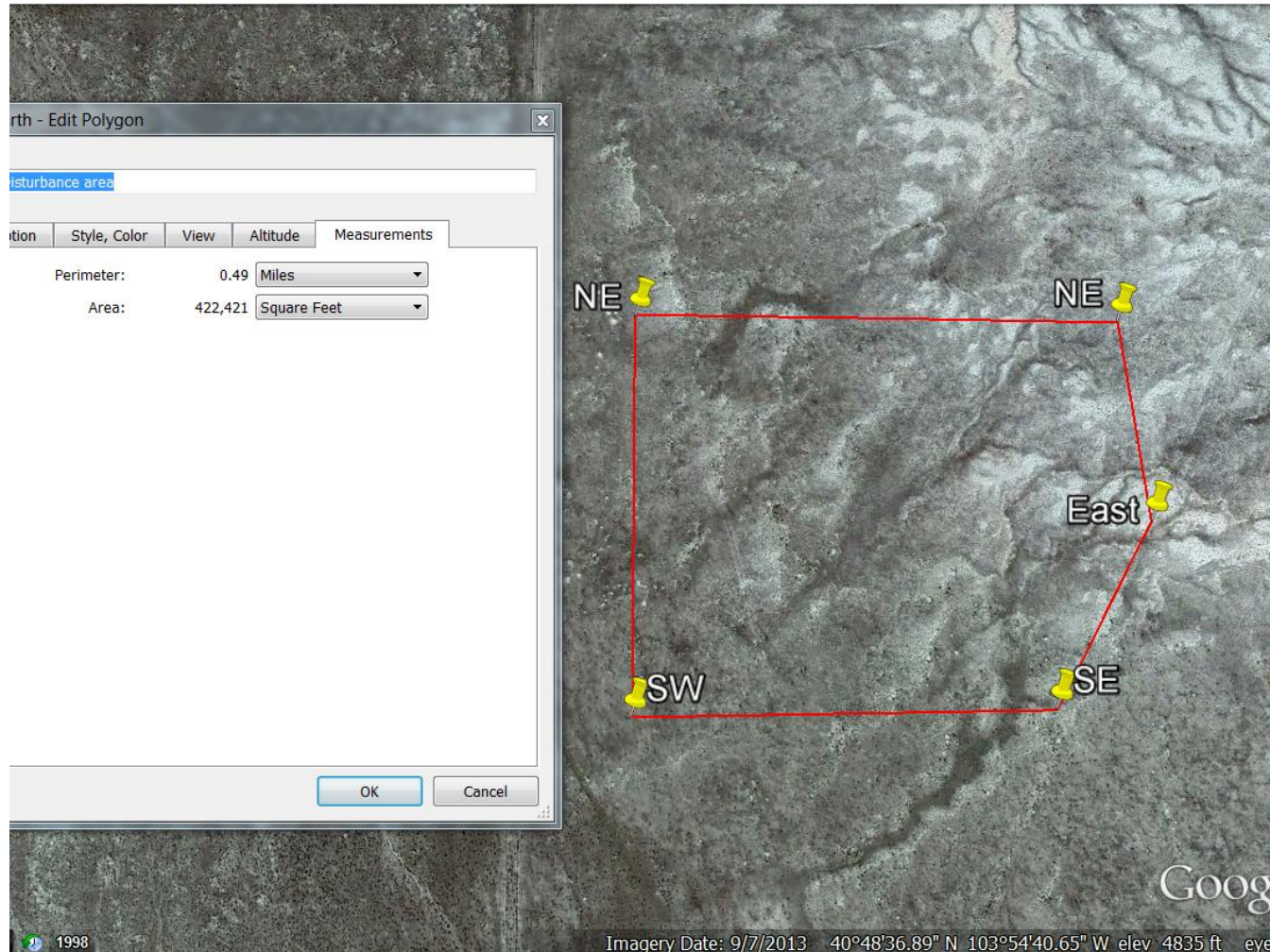
**Photo 20:** Photo taken from the stormwater control ditch on the east end of the location. Photo shows stormwater erosion has begun to incise the perimeter ditch. Advise incorporating velocity check BMPs to mitigate further incision and degradation to the ditch.



**Photo 21:** Photo taken from the south end of the location (west of cattle guard). Photo shows sediment trap. Photo shows stormwater erosion has begun to erode at the outlet of the trap, contributing to sediment laden stormwater discharge.. Sediment does not appear to have sufficient outlet protection.



Inspection Photos  
Operator: WHITING OIL & GAS CORPORATION - 96155  
Location ID: 442134



**Photo 22:** Aerial imagery of the location. Photo shows size of disturbance to be ~9.7 acres in size.