



Cement Ticket

Rig # Rig 14

Customer Name	Date Of Service:
Extraction Oil & Gas Inc	5/8/2017

Location	Equipment
Owl Creek 26	BMTR101

Billing			
Description	Qty	Rate	Total
P and A Charge(Each)	@		
Mileage(Miles)	@		
G Cement (Bags)	@		
Data Acquisition (Each)	@		
Iron Inspection (Each)	@		
Sugar(Lbs)	@		
Water Delivery (Barrels)	@		
Description	Qty	Rate	Total
Miscellaneous	@		

Discount: \$0.00 (0.00%)

TOTAL BILLABLE AMOUNT \$0.00

Description Of Work	Start Time 14:00 pm	Stop Time 18:30 pm
TIH with 146 jnts @ TD. 4511' to pump a balance plug, don't catch circulation pressure up to 1500 psi. rig down cancel cement job to next day.		

Payroll Section						
	Employee	Emp #	Rev Hrs.	Travel Hrs.	Non Rev Hrs.	Total
Supervisor	Jaime, Gustavo	HGR010484	0.00	0.00	0.00	0.00
Operator	Alva, Sergio	HGR010341	4.50	0.00	0.00	4.50
Derrick	Garcia, Roger	HGR010713	4.50	0.00	0.00	4.50
FloorHand	Ambrosier, James	HGR010304	4.50	0.00	0.00	4.50
FloorHand	Serrano, Jose	HGR010629	4.50	0.00	0.00	4.50

No Unreported Incidents Per
 My Signature

Ranger Tool Pusher

Customer/Agent:

Data Tracking Report for Extraction

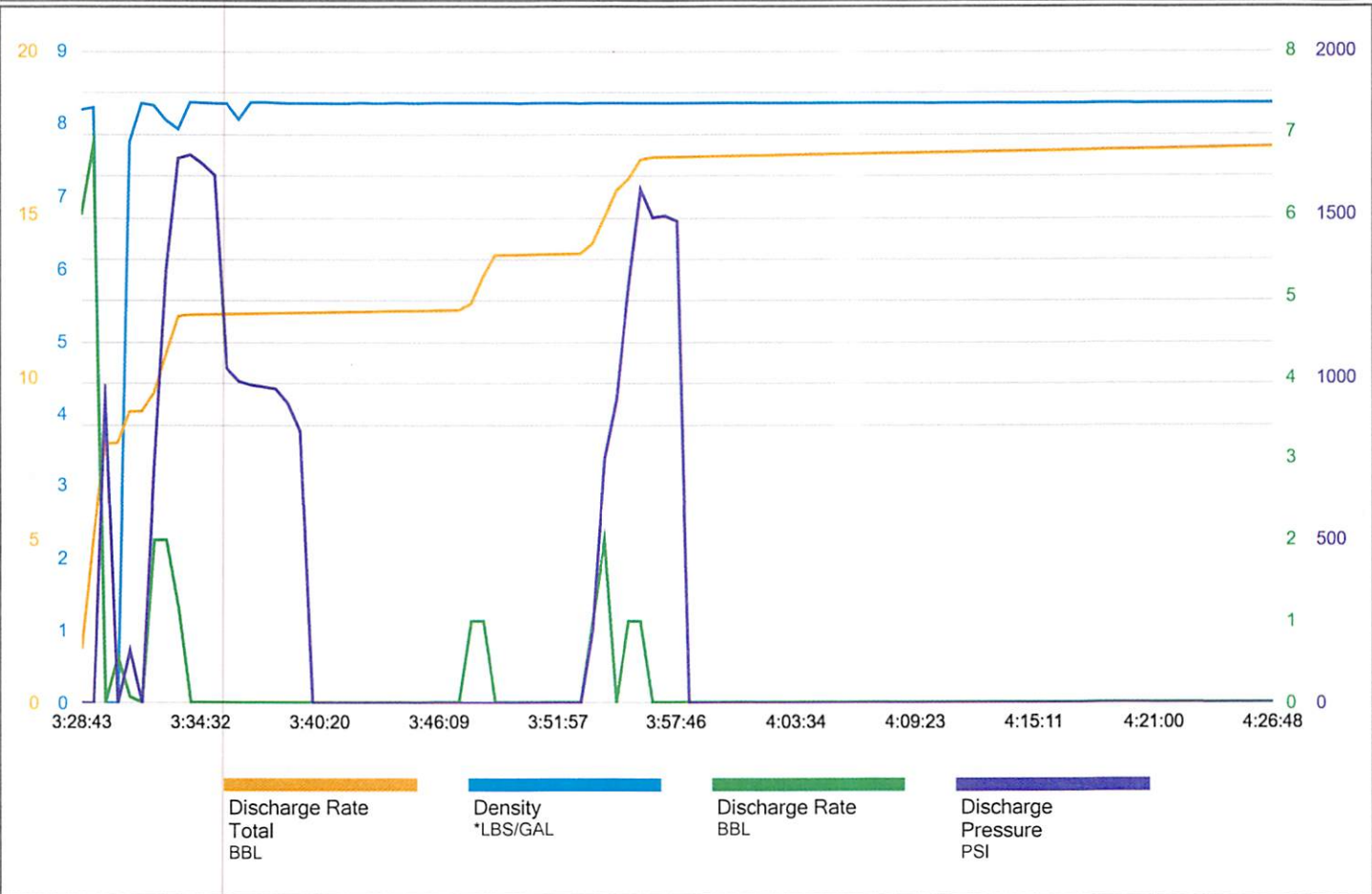
Prepared by

Job Summary

Contact	
Email	
Phone	
Lease	Owl Creek 26
County	Weld
State	CO
Formation	

Date	May 08, 2017
Start Time	3:28:08 PM
End Time	4:27:17 PM
Notes	Extraction Kelly R. Rig #14 BWS

Owl Creek 26 Extraction





REV: 2

PAGE: 1 of 2

ORIGINAL ISSUE DATE: 11/29/2010

REVISION DATE: 2/6/2014

FORM #: HSE-NA-FM-0003

PREPARED BY: DOUG BARNETTE

REVIEWED BY: SCOTT ROBINSON

APPROVED BY: SCOTT ROBINSON

TITLE: JOB SAFETY ANALYSIS (JSA) FORM

This form must be filled out prior to the start of each new job, every day for every work crew on location and must be re-visited if conditions change in the scope of work or environment.

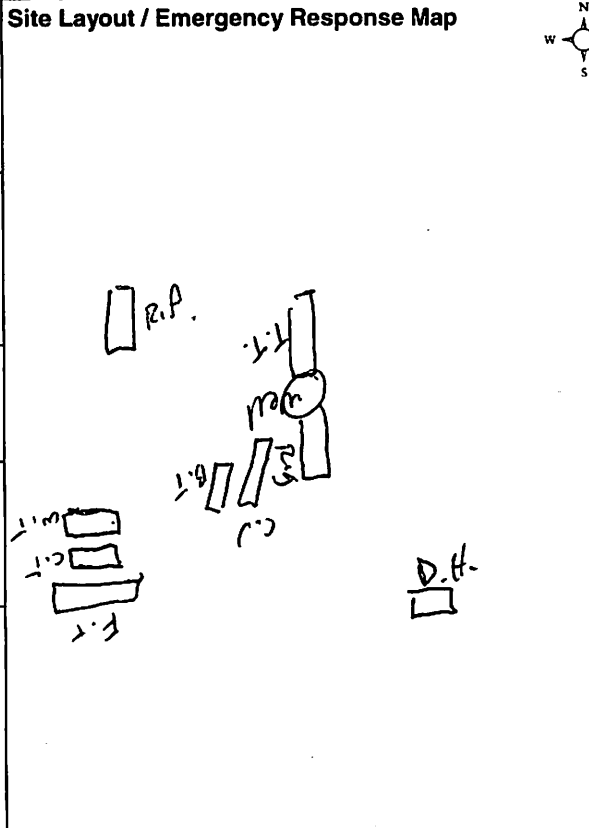
Site/Location/Well # Oak Creek Date: 5-8-17 Customer Company Name: Extraction Customer Rep Name/ #: Kelly Z. Rig #/Crew Name: 14 BWS

Directions To Site: Hwy 14 & CR 47 S 3/10 EN into Emergency Muster Points Primary - Dog house Secondary - Entry to location

Table with columns: Emergency Response Numbers (Contact, Location, Phone) and BWS Contacts (Name, Title, Location, Phone). Includes entries for Weld Co, Ash Anderson, Jason Anderson, and Skip Rading.

Is "911" accessible from this location? Yes: [X] No: [] 24-Hour Emergency Call Center Nearest Customer Field Office: Nearest Customer Control Room Number:

Potential Hazards: [X] High noise levels, [X] Lifting hazards, [X] Fall potential, [X] Respiratory hazard, [X] Ionizing radiation, [X] Weather extremes, [X] Pinch or striking hazards, [X] Sharp edges or hot/cold surfaces, [X] Fire or explosion potential, [X] Chemical hazard, [X] Gas Hazard (e.g. H2S), GPS Information, Safe Work Practices: [X] Simultaneous Operations (SimOps), [X] Special pre-job safety discussions, [X] Review of emergency action plans, PPE for Job Task: [X] Required PPE (HH, steel toed boots, FRC, safety glasses), [X] Lifeline/Body Harness, [X] Goggles, [X] Hearing Protection, [X] Gloves, [X] Air Purifying Respirator.



Potential Environmental Impacts: [X] Equipment or operation noise, [X] Release of gas/liquid/solid or dust, [X] Hazardous waste handling /transport / disposal, [X] Archeological or historical site impact, Stormwater/sediment pollution, River/stream/wetland construction, Endangered wildlife, Other: []

Applicable Environmental Mitigation: [X] Secondary containment / Drip pans required, [X] Grading, berming or other spill mitigation, [X] Hazardous waste manifests, [X] Hose/connection inspection and protocol, [] Chemical storage area with proper controls, Other: [X] pressure test. Comments: PRV 4 K PSI line & hose 2 K PSI



REV: 2

PAGE: 2 of 2

ORIGINAL ISSUE DATE: 11/29/2010

REVISION DATE: 2/6/2014

FORM #: HSE-NA-FM-0003

PREPARED BY: DOUG BARNETTE

REVIEWED BY: SCOTT ROBINSON

APPROVED BY: SCOTT ROBINSON

TITLE: JOB SAFETY ANALYSIS (JSA) FORM

List and discuss the Major Job Steps, the Potential Hazards of each step, associated Consequences and actions to eliminate or reduce hazards. Revise as conditions change during the course of the day's activities.

Major Job Steps	Potential Hazards & Consequences	Actions Taken to Eliminate Hazard/Barriers in Place	Person Responsible for Corrective Action
Spot in	1. SB Truck 2. PP Truck & truck 3. Smash Equipment	1. Clear L.O.F. 2. don't get between. 3. USE spotters	Everyone
Hardline	1. Back strain 2. PP Hardline & hardline 3. SB Hammer	1. team lift 2. good hand placement 3. clear L.O.F.	[Handwritten squiggle]
Pressure test	1. Loud Noise 2. SB Fluid 3. SB Hardline	1. wear ear plugs 2. Double check cont. 3. whip check on place.	
	1. Fall off pump 2. Fluid in eyes 3. Cement burns PP= pinch point	1. 3 points of contact. 2. wear safety glasses 3. wear gloves / wash with fresh water only. L.O.F = line of fire	

Have all contractor/3rd party employees received required field orientation(s)? Yes No

Does everyone involved in the work understand the job hazards, processes, and safe work practices? Yes No

Are all applicable permits in place (hot work, confined space, lockout/tagout)? Yes No

Are all workers trained in the specific job tasks? Yes No

Does everyone understand the emergency evacuation plan? Yes No

Print/Sign	Print/Sign	Print/Sign	Print/Sign	Print/Sign	Print/Sign
Sergio Alen					



REV:

0

PAGE:

Page 1 of 1

ORIGINAL ISSUE DATE:

9/9/2015

REVISION DATE:

N/A

FORM NUMBER:

PREPARED BY:

Doug Barnette

REVIEWED BY:

Guy Hass

APPROVED BY:

Guy Hass

TITLE:

BATCH TRUCK CHECKLIST

Crew Lead / Supervisor

Sergio Alon

Date

5-8-17

Customer

Extraction

Well Number

Oak Creek

Batch Truck - Pre Job

complete

- 1.1 Inspect Cement Head
- 1.2 Ensure Jets are clean
- 1.3 Ensure Belly Lines Clear of Cement
- 1.4 Calibrate Densitometer with fresh water
- 1.5 Flush and set Relief Valve to Operating Pressure
- 1.6 Check vacuum breaker on jet mixing assembly
- 1.7 Check kickout gauge and calibration of all pressure gauges
- 1.8 Flush cement bulk compartments

Batch Truck - Post Job

complete

- 2.1 Clean and Drain Elbow on top of cement truck (jet elbow)
- 2.2 Clean and Drain 4" Valve under triplex
- 2.3 Clean and Drain Triplex pump
- 2.4 Clean and Drain return lines back to tubs
- 2.5 Clean and Drain C pumps
- 2.6 Open 2" Valve under the return line
- 2.7 Open drain between the 2 tubs
- 2.8 Clean and open 4" valves / both sides of batch truck
- 2.9 Remove Pressure Relief Valve clean and inspect
- 2.10 Drain hard line and hoses
- 2.11 Clean and inspect vacuum breakers
- 2.12 Clean and drain Cement mixing head
- 2.13 Leave Cement head fully open
- 2.14 Knock off caps on suction hose (belly line) flush and clean

Bulk Trailer - Post Job

complete

- Remove and clean cement product hose
- Ensure pressure relief valves are working

Completed By:

Supervisor Completion Sign Off:
