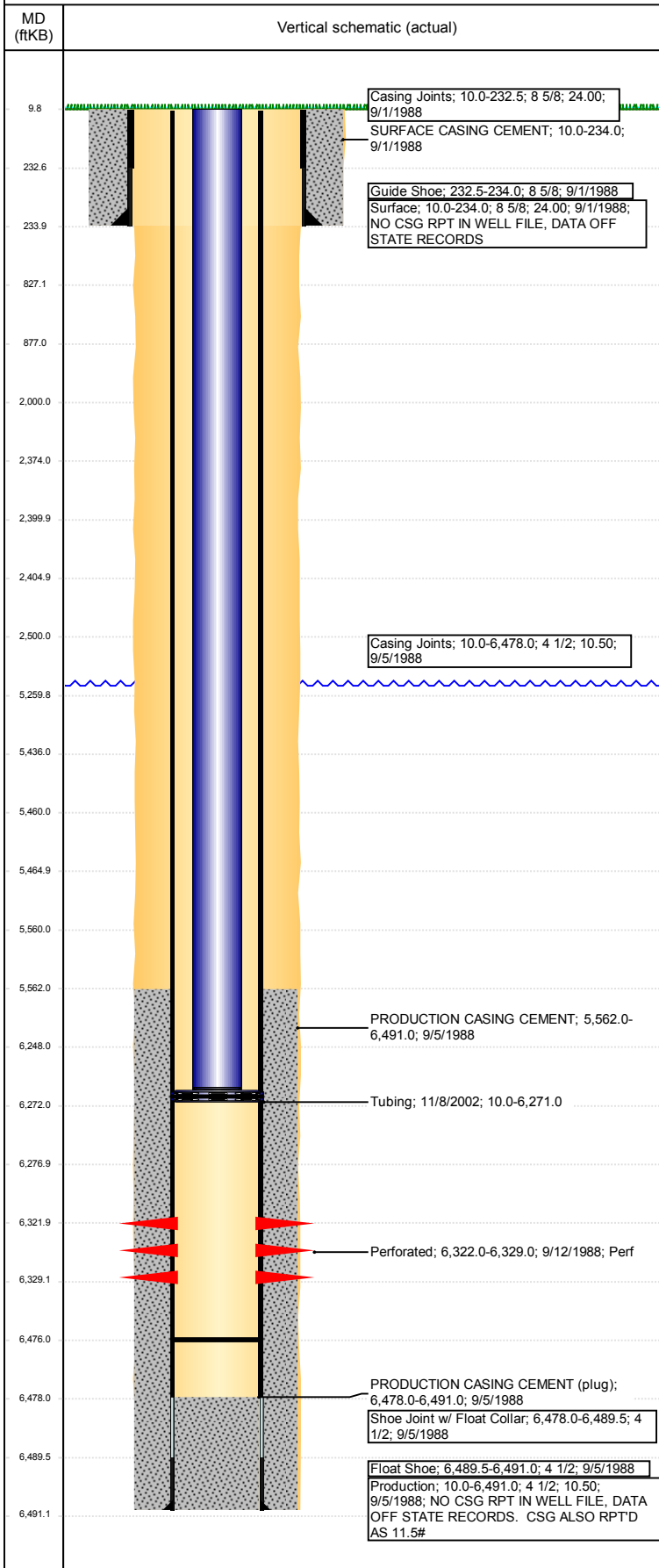


Well Name: LILLI UNIT 06-03

VERTICAL - ORIGINAL HOLE, 8/1/2017 11:55:52 AM



Well Header

API 05-123-14017	Business Unit DJ BASIN	District 25	Well Config VERTICAL
Original KB Elevation (ft) 4,770	KB - GL / MSL (ftKB) 10.00	Spud Date 9/1/1988	P & A Date

Comment

FEDERAL LEASE# C-29692A-ACQ

WELL CONVERTED TO GAS INJECTION 11/2002

NO D & C RPTS IN WELL FILE, SURF HOLE DEPTH & FGS DATE ARE EST. NO STIM DATA RPT'D TO STATE, POSSIBLE FRAC ON 2/7/97, NO DATA PROVIDED ON WORKOVER RPT.

NO CASING RPTS IN WELL FILE. PROD CSG RPT'D TO STATE AS 10.5# & 11.5#!!!!

PACKER DEPTH DISCREPANCY: WORKOVER REPORT PACKER DEPTH @ 6271', ST REPORT DEPTH @ 6229'. USED WORKOVER RPT.

Directions To Well

Congressional Location

Quarter 3 SE	Quarter 4 NW	Section 3	Township 8	Twnshp N/S Dir N	Range 58	Range E/W Dir W
-----------------	-----------------	--------------	---------------	---------------------	-------------	--------------------

Bottom Hole Location

North-South Distance (ft)	From N or S Line	East-West Distance (ft)	From E or W Line
---------------------------	------------------	-------------------------	------------------

Plug Back Total Depths

Date	Depth (ftKB)	Method	Com
9/5/1988	6,478.0	TAG	PBTD APPROX
9/9/1988	6,458.0	CASED HOLE LOG	DEPTH-LOGGER/CBL
11/19/1994	6,476.0	TAG	TAGGED FILL

Wellbore Sections

Section Des	Size (in)	Act Top, MD (ftKB)	Act Btm, MD (ftKB)
SURFACE	12 1/4	10	234
PRODUCTION	7 7/8	234	6,491

Zone Statuses

Zone Name	Status Date	Status	Fluid Type	Job	Prod Method
D SAND	9/13/1988	PR		DRILLING/CO...	
D SAND	11/15/2002	INJ			
D SAND	12/31/2009	SI			

Casing Strings

Surface, 234.0ftKB

Casing Description	Run Date	OD (in)	Wt/Len (l...)	Grade	Top, MD (ft...)	MD (ftKB)
Surface	9/1/1988	8 5/8	24.00		10.0	234.0

Production, 6,491.0ftKB

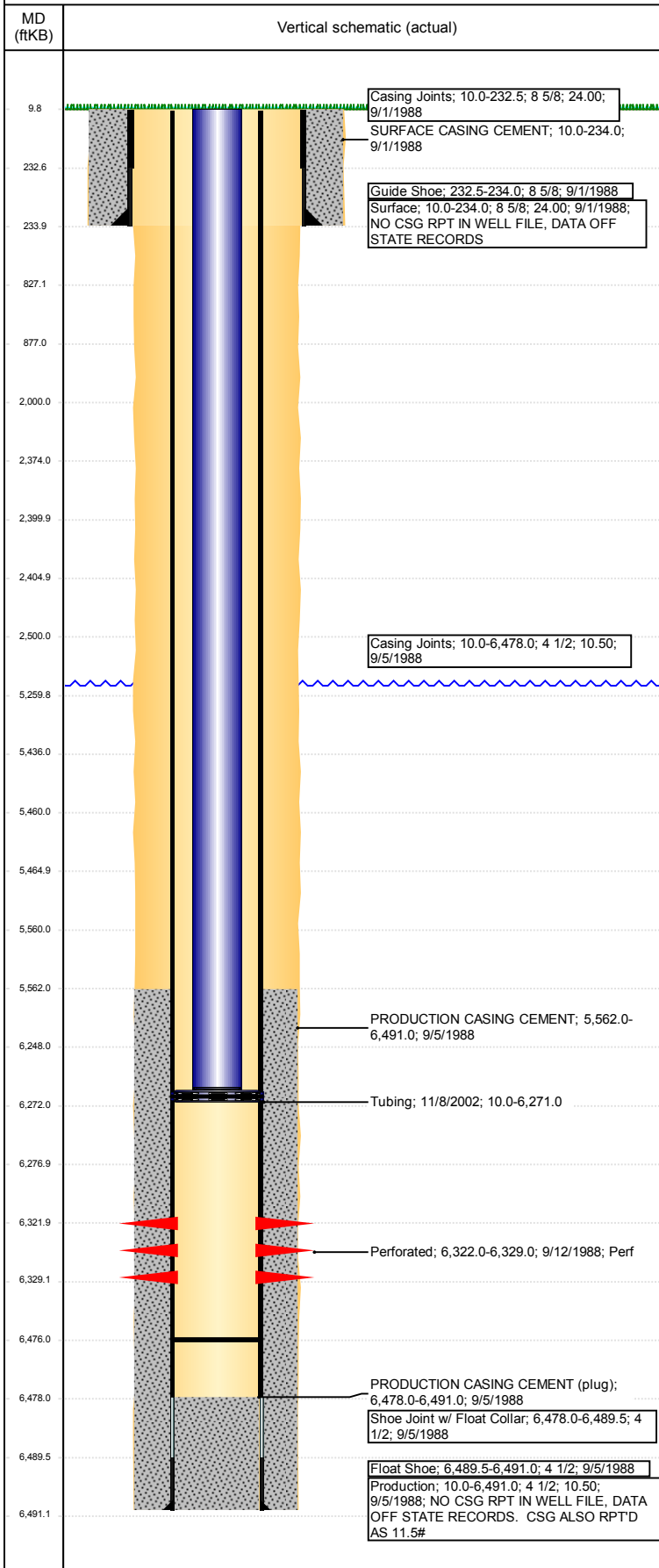
Casing Description	Run Date	OD (in)	Wt/Len (l...)	Grade	Top, MD (ft...)	MD (ftKB)
Production	9/5/1988	4 1/2	10.50		10.0	6,491.0

Cement

Description	Top Depth (ftKB)	Bottom Depth (ftKB)
SURFACE CASING CEMENT	10.0	234.0
PRODUCTION CASING CEMENT	5,562.0	6,491.0
PA Plug	6,248.0	6,272.0
PA Plug	2,374.0	2,400.0
PA Plug	2,405.0	2,500.0
PA Plug	2,000.0	2,500.0
PA Plug	5,260.0	5,560.0
PA Plug	5,436.0	5,460.0
PA Plug	5,465.0	5,560.0
PA Plug	9.8	827.0
PA Plug	827.0	877.0

Well Name: LILLI UNIT 06-03

VERTICAL - ORIGINAL HOLE, 8/1/2017 11:55:53 AM



Tubing Strings

Tubing Description	Run Date	String ...	ID (in)	Wt (lb/ft)	Grade	Len (ft)	Set De...
Tubing	11/8/2002	2 3/8				6,261.00	

Other In Hole

Run Date	Des	OD (in)	Top (ftKB)	Btm (ftKB)
7/21/2017	Cement Retainer	4	5,460.0	5,465.0
7/21/2017	Cement Retainer	4	2,400.0	2,405.0
7/21/2017	Cast Iron Bridge Plug	4	6,272.0	6,277.0

Logs

Date	Type	Top, MD (ftKB)	Btm, MD (ftKB)
9/5/1988	COMPENSATED DENSITY	5,445.0	6,478.0
9/5/1988	DUAL INDUCTION	235.0	6,491.0
9/5/1988	MICRORESISTIVITY	5,378.0	6,370.0
9/9/1988	CEMENT BOND	5,410.0	6,452.0

Perforation Data

Linked Zone	Bnch/St g	Sum of Entered Shot Total	Top (ftKB)	Btm (ftKB)	Date
		0	2,500.00	2,500.00	7/21/2017
		0	5,560.00	5,560.00	7/21/2017
D SAND, ORIGINAL HOLE		14	6,322.00	6,329.00	9/12/1988
Total (Sum)		14			