



July 17, 2017

Colorado Oil and Gas Conservation Commission
1120 Lincoln Street, Suite 801
Denver, CO 80203

RE: Proposed Wellbore Spacing Unit
Wilson IC 03-019HNX
Niobrara New Drill
NWNW Sec. 1, Township 3N, Range 68W, 6th P.M.
Weld County, Colorado

Dear Director Lepore,

Great Western Operating Company, LLC (Great Western) is planning to drill the above captioned well in accordance with the provisions of Colorado Oil and Gas Conservation Commission (COGCC) Rule 318A.e.

Great Western's proposed wellbore spacing unit consists of:

Township 3N, Range 68W (Weld County):
Section 2: N/2N/2
Section 3: N/2N/2
Township 4N, Range 68W (Weld County):
Section 34: S/2S/2
Section 35: S/2S/2

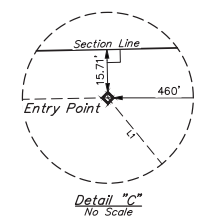
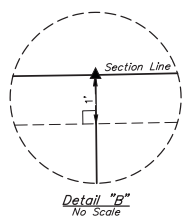
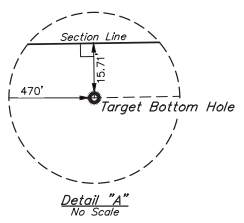
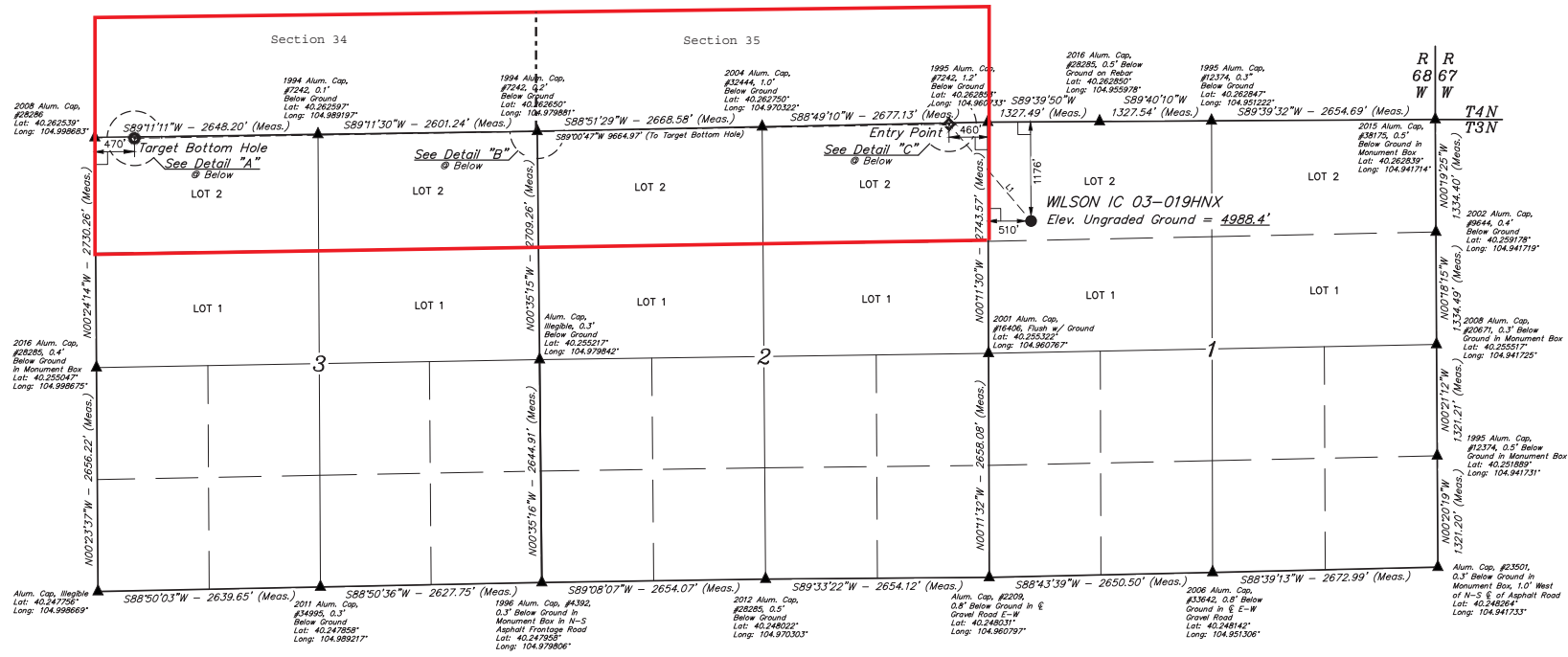
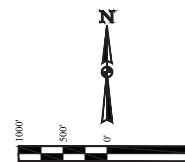
Total Acres: 650 ac

The 30 day notification time period has passed and we have not yet received any objections to such well locations or proposed spacing unit, therefore Great Western hereby requests the Director to approve the above mentioned well. Great Western respectfully requests the COGCC review the enclosed map illustrating the proposed wellbore spacing unit.

Respectfully,

Ashley Noonan

Ashley Noonan
Senior Regulatory Analyst
Great Western Operating Company, LLC



LEGEND:
 L = 90° SYMBOL
 ● = PROPOSED WELLHEAD.
 ○ = TARGET BOTTOM HOLE.
 ⊕ = ENTRY POINT.
 ▲ = SECTION CORNERS LOCATED. (NAD 83)

PDOP = 1.5

LINE	DIRECTION	LENGTH	NAD 83 (SURFACE LOCATION)	NAD 83 (ENTRY POINT)	NAD 83 (TARGET BOTTOM HOLE)
L1	N40°18'37"W	1505.35'	LATITUDE = 40°15'34.68" (40.259625) LONGITUDE = 104°57'32.11" (104.958919)	LATITUDE = 40°15'46.05" (40.262792) LONGITUDE = 104°57'44.57" (104.962813)	LATITUDE = 40°15'43.02" (40.262806) LONGITUDE = 104°59'09.20" (104.970000)
L2	N40°18'37"W	1505.35'	LATITUDE = 40°15'34.70" (40.259639) LONGITUDE = 104°57'30.20" (104.958389)	LATITUDE = 40°15'46.11" (40.262808) LONGITUDE = 104°57'42.65" (104.961847)	LATITUDE = 40°15'43.08" (40.262522) LONGITUDE = 104°59'42.28" (104.996447)



REV: 2 11-14-16 L.C.S. (NAME CHANGE)

WELL LOCATION PLAT

UWTAH
CORPORATE OFFICE • 85 SOUTH 200 EAST
VERNAL, UT 84078 • (435) 789-1017

DESIGNED BY: ZANE BULLARD, G.W., M.F.D.
DRAWN BY: M.F.D.

SCALE: 1" = 1000'