



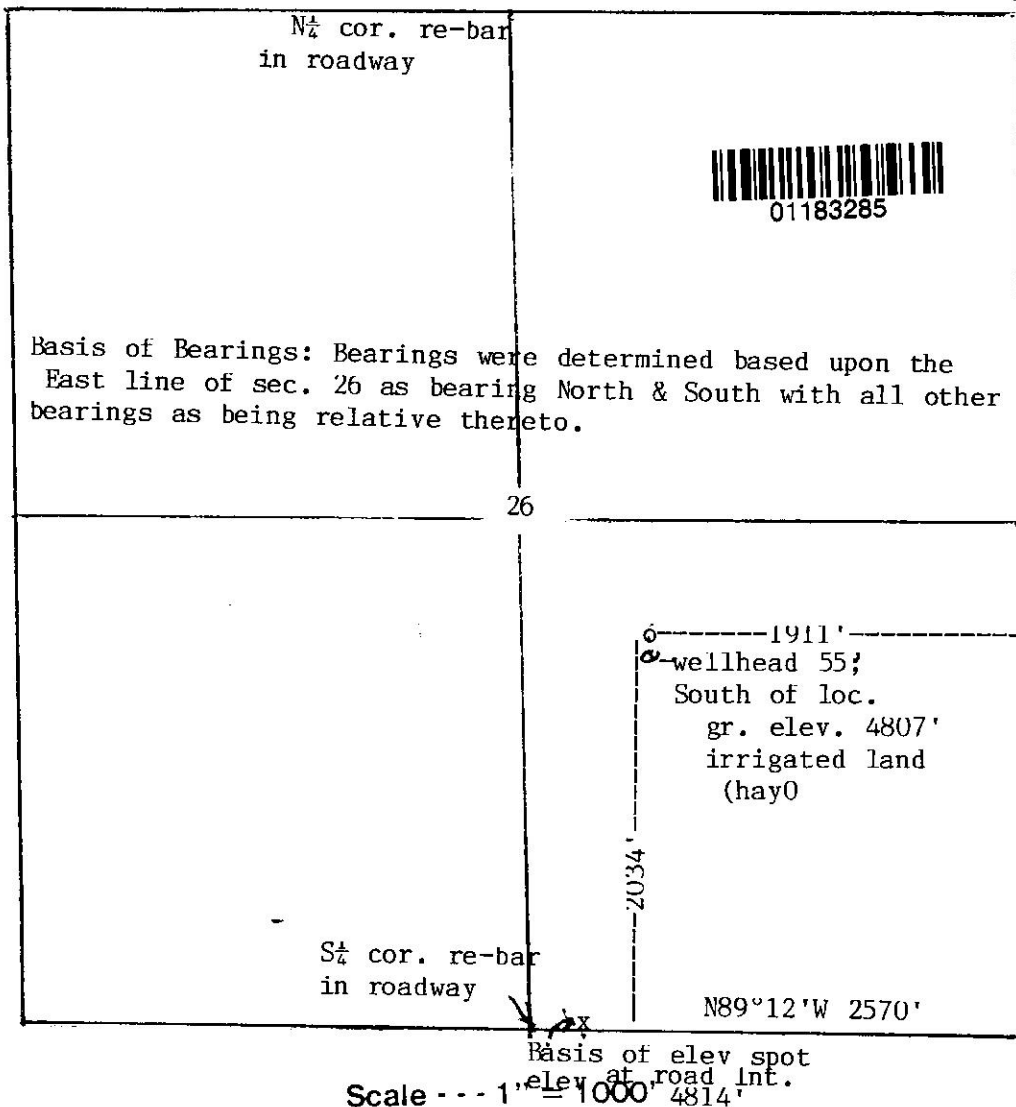
Holloway & Holloway, Inc.

P.O. Box 3331
Greeley, CO 80633
(303) 867-3715
(303) 352-5852

R67W

N89°W 2642'

NE cor. re-bar
in roadway



Scale --- 1" = 1000'

In accordance with a request from Kerr-McGee Rocky Mountain Corporation
the Undersigned has determined the location of the Magness 10-26A well

to be 2034' FSL & 1911' FEL at right angles as co-ordinates

Section 26 Township 3N Range 67W of the 6th principal Meridian

Weld County, Colorado.

I hereby certify,
that this oil and/or gas well location certificate was prepared for
that it is not a land survey plat or improvement survey plat and that it is not to be relied upon for the
establishment of fence, building or other future improvement lines

Date 9-9-2002

Kerr-McGee Rocky Mountain Corporation

Holloway & Holloway, Inc.

States of