

Captiva Energy Partners

Well Name: **Stillroven Farm 7**

Surface Location: Stillroven Farm Pad Sec.5-T3N-R68W
North American Datum 1983 , US State Plane 1983, Colorado Northern Zone

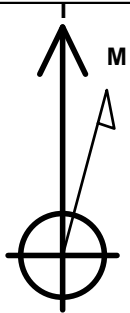
Ground Elevation: 5075.0

+N/-S	+E/-W	Northing	Easting	Latitude	Longitude	Slot
0.0	0.0	1338106.63	134292.62	40.260502	-105.018806	

Original Well Elev WELL @ 5098.0ft (Original Well Elev)

DESIGN TARGET DETAILS

Name	TVD	+N/-S	+E/-W	Latitude	Longitude
SHL 655'FNL, 310'FEL	1.0	0.0	0.0	40.260502	105.018806
BHL 1235'FNL, 460'FWL	7452.0	-659.7	-4501.5	40.258689	105.034934
LP 1235'FNL, 511'FEL	7452.0	-582.7	-202.0	40.258902	105.019530



Azimuths to True North
Magnetic North: 8.19°

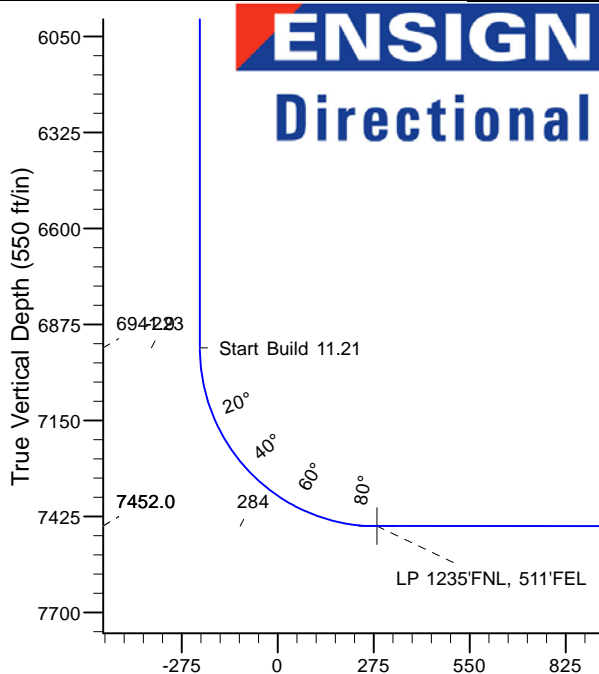
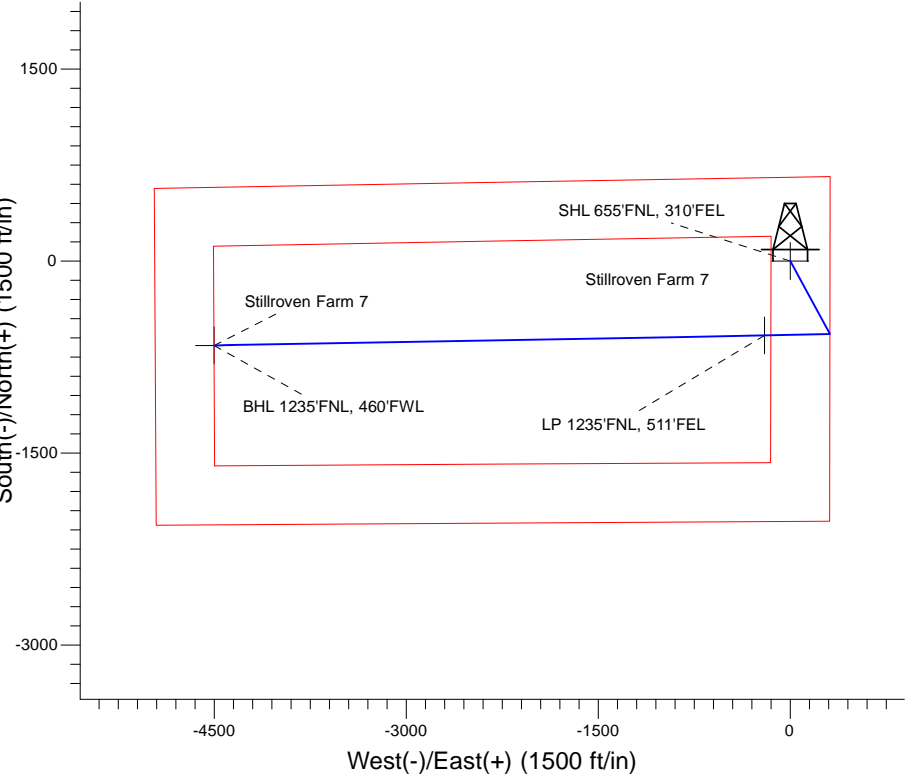
Magnetic Field
Strength: 52405.2nT
Dip Angle: 66.69°
Date: 5/23/2017
Model: IGRF2010

Stillroven Farm Pad Sec.5-T3N-R68W
Stillroven Farm 7
Plan #2 (6-5-17)
14:30, June 05 2017

ANNOTATIONS

TVD	MD	Annotation
1200.0	1200.0	Start Build 1.50
6941.8	6991.0	Start Build 11.21
7452.0	7794.9	Start DLS 1.00 TFO 90.00
7452.0	12095.0	TD at 12095.0

South(-)/North(+) (1500 ft/in)



SECTION DETAILS

Sec	MD	Inc	Azi	TVD	+N/-S	+E/-W	Dleg	TFace	VFace	Target
1	0.0	0.00	0.00	0.0	0.0	0.0	0.00	0.00	0.0	
2	1200.0	0.00	0.00	1200.0	0.0	0.0	0.00	0.00	0.0	
3	31803.3	9.05	151.54	1800.8	-41.8	22.7	1.50	151.54	-16.4	
4	45396.6	9.05	151.54	5349.4	-538.7	292.0	0.00	0.00	-210.8	
5	55849.1	0.00	0.00	5800.0	-570.0	309.0	2.00	180.00	-223.1	
6	66991.0	0.00	0.00	6941.8	-570.0	309.0	0.00	0.00	-223.1	
7	77793.9	90.00	268.58	7452.0	-582.6	-201.0	11.21	268.58	283.4	
8	87794.9	90.00	268.58	7452.0	-582.7	-202.0	0.00	0.00	284.4	LP 1235'FNL, 511'FEL
9	97834.2	90.00	268.97	7452.0	-583.5	-241.4	1.00	90.00	323.4	
10	12095.0	90.00	268.97	7452.0	-659.7	-4501.5	0.00	0.00	4549.6	BHL 1235'FNL, 460'FWL

Vertical Section at 261.66° (550 ft/in)



Directional

Captiva Energy Partners

SEC.5-T3N-R68W

Stillroven Farm Pad Sec.5-T3N-R68W

Stillroven Farm 7

Wellbore #1

Plan: Plan #2 (6-5-17)

Standard Planning Report

05 June, 2017



Directional

Database:	US_EDM	Local Co-ordinate Reference:	Well Stillroven Farm 7
Company:	Captiva Energy Partners	TVD Reference:	WELL @ 5098.0ft (Original Well Elev)
Project:	SEC.5-T3N-R68W	MD Reference:	WELL @ 5098.0ft (Original Well Elev)
Site:	Stillroven Farm Pad Sec.5-T3N-R68W	North Reference:	True
Well:	Stillroven Farm 7	Survey Calculation Method:	Minimum Curvature
Wellbore:	Wellbore #1		
Design:	Plan #2 (6-5-17)		

Project	SEC.5-T3N-R68W, Weld County, Colorado		
Map System:	US State Plane 1983	System Datum:	Mean Sea Level
Geo Datum:	North American Datum 1983		Using Well Reference Point
Map Zone:	Colorado Northern Zone		Using geodetic scale factor

Site	Stillroven Farm Pad Sec.5-T3N-R68W			
Site Position:		Northing:	1,338,196.56 usft	Latitude: 40.260749
From:	Lat/Long	Easting:	3,134,292.41 usft	Longitude: -105.018805
Position Uncertainty:	0.0 ft	Slot Radius:	13-3/16 "	Grid Convergence: 0.31 °

Well	Stillroven Farm 7			
Well Position	+N/-S	-89.9 ft	Northing:	1,338,106.65 usft
	+E/-W	-0.3 ft	Easting:	3,134,292.62 usft
Position Uncertainty		0.0 ft	Wellhead Elevation:	0.0 ft
			Ground Level:	5,075.0 ft

Wellbore	Wellbore #1				
Magnetics	Model Name	Sample Date	Declination (°)	Dip Angle (°)	Field Strength (nT)
	IGRF2010	5/23/2017	8.19	66.69	52,405

Design	Plan #2 (6-5-17)			
Audit Notes:				
Version:	Phase:	PROTOTYPE	Tie On Depth:	0.0
Vertical Section:	Depth From (TVD)	+N/-S	+E/-W	Direction
	(ft)	(ft)	(ft)	(°)
	0.0	0.0	0.0	261.66

Plan Sections										
Measured Depth (ft)	Inclination (°)	Azimuth (°)	Vertical Depth (ft)	+N/-S (ft)	+E/-W (ft)	Dogleg Rate (°/100usft)	Build Rate (°/100usft)	Turn Rate (°/100usft)	TFO (°)	Target
0.0	0.00	0.00	0.0	0.0	0.0	0.00	0.00	0.00	0.00	
1,200.0	0.00	0.00	1,200.0	0.0	0.0	0.00	0.00	0.00	0.00	
1,803.3	9.05	151.54	1,800.8	-41.8	22.7	1.50	1.50	0.00	151.54	
5,396.6	9.05	151.54	5,349.4	-538.7	292.0	0.00	0.00	0.00	0.00	
5,849.1	0.00	0.00	5,800.0	-570.0	309.0	2.00	-2.00	0.00	180.00	
6,991.0	0.00	0.00	6,941.8	-570.0	309.0	0.00	0.00	0.00	0.00	
7,793.9	90.00	268.58	7,452.0	-582.6	-201.0	11.21	11.21	0.00	268.58	
7,794.9	90.00	268.58	7,452.0	-582.7	-202.0	0.00	0.00	0.00	0.00	LP 1235'FNL, 511'FEI
7,834.2	90.00	268.97	7,452.0	-583.5	-241.4	1.00	0.00	1.00	90.00	
12,095.0	90.00	268.97	7,452.0	-659.7	-4,501.5	0.00	0.00	0.00	0.00	BHL 1235'FNL, 460'F'

Database:	US_EDM	Local Co-ordinate Reference:	Well Stillroven Farm 7
Company:	Captiva Energy Partners	TVD Reference:	WELL @ 5098.0ft (Original Well Elev)
Project:	SEC.5-T3N-R68W	MD Reference:	WELL @ 5098.0ft (Original Well Elev)
Site:	Stillroven Farm Pad Sec.5-T3N-R68W	North Reference:	True
Well:	Stillroven Farm 7	Survey Calculation Method:	Minimum Curvature
Wellbore:	Wellbore #1		
Design:	Plan #2 (6-5-17)		

Planned Survey									
Measured Depth (ft)	Inclination (°)	Azimuth (°)	Vertical Depth (ft)	+N/-S (ft)	+E/-W (ft)	Vertical Section (ft)	Dogleg Rate (°/100usft)	Build Rate (°/100usft)	Turn Rate (°/100usft)
0.0	0.00	0.00	0.0	0.0	0.0	0.0	0.00	0.00	0.00
1.0	0.00	0.00	1.0	0.0	0.0	0.0	0.00	0.00	0.00
SHL 655'FNL, 310'FEL									
100.0	0.00	0.00	100.0	0.0	0.0	0.0	0.00	0.00	0.00
200.0	0.00	0.00	200.0	0.0	0.0	0.0	0.00	0.00	0.00
300.0	0.00	0.00	300.0	0.0	0.0	0.0	0.00	0.00	0.00
400.0	0.00	0.00	400.0	0.0	0.0	0.0	0.00	0.00	0.00
500.0	0.00	0.00	500.0	0.0	0.0	0.0	0.00	0.00	0.00
600.0	0.00	0.00	600.0	0.0	0.0	0.0	0.00	0.00	0.00
700.0	0.00	0.00	700.0	0.0	0.0	0.0	0.00	0.00	0.00
800.0	0.00	0.00	800.0	0.0	0.0	0.0	0.00	0.00	0.00
900.0	0.00	0.00	900.0	0.0	0.0	0.0	0.00	0.00	0.00
1,000.0	0.00	0.00	1,000.0	0.0	0.0	0.0	0.00	0.00	0.00
1,100.0	0.00	0.00	1,100.0	0.0	0.0	0.0	0.00	0.00	0.00
1,200.0	0.00	0.00	1,200.0	0.0	0.0	0.0	0.00	0.00	0.00
Start Build 1.50									
1,300.0	1.50	151.54	1,300.0	-1.2	0.6	-0.5	1.50	1.50	0.00
1,400.0	3.00	151.54	1,399.9	-4.6	2.5	-1.8	1.50	1.50	0.00
1,500.0	4.50	151.54	1,499.7	-10.4	5.6	-4.1	1.50	1.50	0.00
1,600.0	6.00	151.54	1,599.3	-18.4	10.0	-7.2	1.50	1.50	0.00
1,700.0	7.50	151.54	1,698.6	-28.7	15.6	-11.2	1.50	1.50	0.00
1,800.0	9.00	151.54	1,797.5	-41.3	22.4	-16.2	1.50	1.50	0.00
1,803.3	9.05	151.54	1,800.8	-41.8	22.7	-16.4	1.50	1.50	0.00
1,900.0	9.05	151.54	1,896.3	-55.2	29.9	-21.6	0.00	0.00	0.00
2,000.0	9.05	151.54	1,995.0	-69.0	37.4	-27.0	0.00	0.00	0.00
2,100.0	9.05	151.54	2,093.8	-82.8	44.9	-32.4	0.00	0.00	0.00
2,200.0	9.05	151.54	2,192.6	-96.7	52.4	-37.8	0.00	0.00	0.00
2,300.0	9.05	151.54	2,291.3	-110.5	59.9	-43.2	0.00	0.00	0.00
2,400.0	9.05	151.54	2,390.1	-124.3	67.4	-48.6	0.00	0.00	0.00
2,500.0	9.05	151.54	2,488.8	-138.1	74.9	-54.1	0.00	0.00	0.00
2,600.0	9.05	151.54	2,587.6	-152.0	82.4	-59.5	0.00	0.00	0.00
2,700.0	9.05	151.54	2,686.3	-165.8	89.9	-64.9	0.00	0.00	0.00
2,800.0	9.05	151.54	2,785.1	-179.6	97.4	-70.3	0.00	0.00	0.00
2,900.0	9.05	151.54	2,883.8	-193.4	104.9	-75.7	0.00	0.00	0.00
3,000.0	9.05	151.54	2,982.6	-207.3	112.4	-81.1	0.00	0.00	0.00
3,100.0	9.05	151.54	3,081.4	-221.1	119.9	-86.5	0.00	0.00	0.00
3,200.0	9.05	151.54	3,180.1	-234.9	127.4	-91.9	0.00	0.00	0.00
3,300.0	9.05	151.54	3,278.9	-248.7	134.8	-97.4	0.00	0.00	0.00
3,400.0	9.05	151.54	3,377.6	-262.6	142.3	-102.8	0.00	0.00	0.00
3,500.0	9.05	151.54	3,476.4	-276.4	149.8	-108.2	0.00	0.00	0.00
3,600.0	9.05	151.54	3,575.1	-290.2	157.3	-113.6	0.00	0.00	0.00
3,700.0	9.05	151.54	3,673.9	-304.1	164.8	-119.0	0.00	0.00	0.00
3,800.0	9.05	151.54	3,772.6	-317.9	172.3	-124.4	0.00	0.00	0.00
3,900.0	9.05	151.54	3,871.4	-331.7	179.8	-129.8	0.00	0.00	0.00
4,000.0	9.05	151.54	3,970.2	-345.5	187.3	-135.2	0.00	0.00	0.00
4,100.0	9.05	151.54	4,068.9	-359.4	194.8	-140.6	0.00	0.00	0.00
4,200.0	9.05	151.54	4,167.7	-373.2	202.3	-146.1	0.00	0.00	0.00
4,300.0	9.05	151.54	4,266.4	-387.0	209.8	-151.5	0.00	0.00	0.00
4,400.0	9.05	151.54	4,365.2	-400.8	217.3	-156.9	0.00	0.00	0.00
4,500.0	9.05	151.54	4,463.9	-414.7	224.8	-162.3	0.00	0.00	0.00
4,600.0	9.05	151.54	4,562.7	-428.5	232.3	-167.7	0.00	0.00	0.00
4,700.0	9.05	151.54	4,661.4	-442.3	239.8	-173.1	0.00	0.00	0.00
4,800.0	9.05	151.54	4,760.2	-456.2	247.3	-178.5	0.00	0.00	0.00
4,900.0	9.05	151.54	4,859.0	-470.0	254.8	-183.9	0.00	0.00	0.00

Database:	US_EDM	Local Co-ordinate Reference:	Well Stillroven Farm 7
Company:	Captiva Energy Partners	TVD Reference:	WELL @ 5098.0ft (Original Well Elev)
Project:	SEC.5-T3N-R68W	MD Reference:	WELL @ 5098.0ft (Original Well Elev)
Site:	Stillroven Farm Pad Sec.5-T3N-R68W	North Reference:	True
Well:	Stillroven Farm 7	Survey Calculation Method:	Minimum Curvature
Wellbore:	Wellbore #1		
Design:	Plan #2 (6-5-17)		

Planned Survey									
Measured Depth (ft)	Inclination (°)	Azimuth (°)	Vertical Depth (ft)	+N/-S (ft)	+E/-W (ft)	Vertical Section (ft)	Dogleg Rate (°/100usft)	Build Rate (°/100usft)	Turn Rate (°/100usft)
5,000.0	9.05	151.54	4,957.7	-483.8	262.3	-189.3	0.00	0.00	0.00
5,100.0	9.05	151.54	5,056.5	-497.6	269.8	-194.8	0.00	0.00	0.00
5,200.0	9.05	151.54	5,155.2	-511.5	277.3	-200.2	0.00	0.00	0.00
5,300.0	9.05	151.54	5,254.0	-525.3	284.8	-205.6	0.00	0.00	0.00
5,396.6	9.05	151.54	5,349.4	-538.7	292.0	-210.8	0.00	0.00	0.00
5,400.0	8.98	151.54	5,352.7	-539.1	292.3	-211.0	2.00	-2.00	0.00
5,500.0	6.98	151.54	5,451.8	-551.3	298.9	-215.8	2.00	-2.00	0.00
5,600.0	4.98	151.54	5,551.2	-560.5	303.8	-219.4	2.00	-2.00	0.00
5,700.0	2.98	151.54	5,651.0	-566.6	307.2	-221.7	2.00	-2.00	0.00
5,800.0	0.98	151.54	5,750.9	-569.6	308.8	-222.9	2.00	-2.00	0.00
5,849.1	0.00	0.00	5,800.0	-570.0	309.0	-223.1	2.00	-2.00	0.00
5,900.0	0.00	0.00	5,850.9	-570.0	309.0	-223.1	0.00	0.00	0.00
6,000.0	0.00	0.00	5,950.9	-570.0	309.0	-223.1	0.00	0.00	0.00
6,100.0	0.00	0.00	6,050.9	-570.0	309.0	-223.1	0.00	0.00	0.00
6,200.0	0.00	0.00	6,150.9	-570.0	309.0	-223.1	0.00	0.00	0.00
6,300.0	0.00	0.00	6,250.9	-570.0	309.0	-223.1	0.00	0.00	0.00
6,400.0	0.00	0.00	6,350.9	-570.0	309.0	-223.1	0.00	0.00	0.00
6,500.0	0.00	0.00	6,450.9	-570.0	309.0	-223.1	0.00	0.00	0.00
6,600.0	0.00	0.00	6,550.9	-570.0	309.0	-223.1	0.00	0.00	0.00
6,700.0	0.00	0.00	6,650.9	-570.0	309.0	-223.1	0.00	0.00	0.00
6,800.0	0.00	0.00	6,750.9	-570.0	309.0	-223.1	0.00	0.00	0.00
6,900.0	0.00	0.00	6,850.9	-570.0	309.0	-223.1	0.00	0.00	0.00
6,991.0	0.00	0.00	6,941.9	-570.0	309.0	-223.1	0.00	0.00	0.00
Start Build 11.21									
7,000.0	1.01	268.58	6,950.9	-570.0	308.9	-223.0	11.27	11.27	0.00
7,100.0	12.22	268.58	7,050.1	-570.3	297.4	-211.6	11.21	11.21	0.00
7,200.0	23.43	268.58	7,145.1	-571.0	266.9	-181.2	11.21	11.21	0.00
7,300.0	34.64	268.58	7,232.4	-572.2	218.4	-133.1	11.21	11.21	0.00
7,400.0	45.85	268.58	7,308.6	-573.8	153.9	-69.1	11.21	11.21	0.00
7,500.0	57.06	268.58	7,370.8	-575.8	75.9	8.4	11.21	11.21	0.00
7,600.0	68.27	268.58	7,416.7	-578.0	-12.8	96.5	11.21	11.21	0.00
7,700.0	79.48	268.58	7,444.4	-580.3	-108.7	191.7	11.21	11.21	0.00
7,793.9	90.00	268.58	7,452.0	-582.6	-201.0	283.4	11.21	11.21	0.00
7,794.9	90.00	268.58	7,452.0	-582.7	-202.0	284.4	0.00	0.00	0.00
Start DLS 1.00 TFO 90.00 - LP 1235°FNL, 511°FEL									
7,800.0	90.00	268.63	7,452.0	-582.8	-207.1	289.4	1.00	0.00	1.00
7,834.2	90.00	268.97	7,452.0	-583.5	-241.4	323.4	1.00	0.00	1.00
7,900.0	90.00	268.97	7,452.0	-584.7	-307.1	388.6	0.00	0.00	0.00
8,000.0	90.00	268.97	7,452.0	-586.5	-407.1	487.8	0.00	0.00	0.00
8,100.0	90.00	268.97	7,452.0	-588.3	-507.1	587.0	0.00	0.00	0.00
8,200.0	90.00	268.97	7,452.0	-590.0	-607.1	686.2	0.00	0.00	0.00
8,300.0	90.00	268.97	7,452.0	-591.8	-707.0	785.4	0.00	0.00	0.00
8,400.0	90.00	268.97	7,452.0	-593.6	-807.0	884.6	0.00	0.00	0.00
8,500.0	90.00	268.97	7,452.0	-595.4	-907.0	983.8	0.00	0.00	0.00
8,600.0	90.00	268.97	7,452.0	-597.2	-1,007.0	1,083.0	0.00	0.00	0.00
8,700.0	90.00	268.97	7,452.0	-599.0	-1,107.0	1,182.1	0.00	0.00	0.00
8,800.0	90.00	268.97	7,452.0	-600.8	-1,207.0	1,281.3	0.00	0.00	0.00
8,900.0	90.00	268.97	7,452.0	-602.6	-1,306.9	1,380.5	0.00	0.00	0.00
9,000.0	90.00	268.97	7,452.0	-604.4	-1,406.9	1,479.7	0.00	0.00	0.00
9,100.0	90.00	268.97	7,452.0	-606.1	-1,506.9	1,578.9	0.00	0.00	0.00
9,200.0	90.00	268.97	7,452.0	-607.9	-1,606.9	1,678.1	0.00	0.00	0.00
9,300.0	90.00	268.97	7,452.0	-609.7	-1,706.9	1,777.3	0.00	0.00	0.00
9,400.0	90.00	268.97	7,452.0	-611.5	-1,806.9	1,876.4	0.00	0.00	0.00
9,500.0	90.00	268.97	7,452.0	-613.3	-1,906.9	1,975.6	0.00	0.00	0.00

Database:	US_EDM	Local Co-ordinate Reference:	Well Stillroven Farm 7
Company:	Captiva Energy Partners	TVD Reference:	WELL @ 5098.0ft (Original Well Elev)
Project:	SEC.5-T3N-R68W	MD Reference:	WELL @ 5098.0ft (Original Well Elev)
Site:	Stillroven Farm Pad Sec.5-T3N-R68W	North Reference:	True
Well:	Stillroven Farm 7	Survey Calculation Method:	Minimum Curvature
Wellbore:	Wellbore #1		
Design:	Plan #2 (6-5-17)		

Planned Survey										
Measured Depth (ft)	Inclination (°)	Azimuth (°)	Vertical Depth (ft)	+N/-S (ft)	+E/-W (ft)	Vertical Section (ft)	Dogleg Rate (°/100usft)	Build Rate (°/100usft)	Turn Rate (°/100usft)	
9,600.0	90.00	268.97	7,452.0	-615.1	-2,006.8	2,074.8	0.00	0.00	0.00	
9,700.0	90.00	268.97	7,452.0	-616.9	-2,106.8	2,174.0	0.00	0.00	0.00	
9,800.0	90.00	268.97	7,452.0	-618.7	-2,206.8	2,273.2	0.00	0.00	0.00	
9,900.0	90.00	268.97	7,452.0	-620.5	-2,306.8	2,372.4	0.00	0.00	0.00	
10,000.0	90.00	268.97	7,452.0	-622.2	-2,406.8	2,471.6	0.00	0.00	0.00	
10,100.0	90.00	268.97	7,452.0	-624.0	-2,506.8	2,570.8	0.00	0.00	0.00	
10,200.0	90.00	268.97	7,452.0	-625.8	-2,606.7	2,669.9	0.00	0.00	0.00	
10,300.0	90.00	268.97	7,452.0	-627.6	-2,706.7	2,769.1	0.00	0.00	0.00	
10,400.0	90.00	268.97	7,452.0	-629.4	-2,806.7	2,868.3	0.00	0.00	0.00	
10,500.0	90.00	268.97	7,452.0	-631.2	-2,906.7	2,967.5	0.00	0.00	0.00	
10,600.0	90.00	268.97	7,452.0	-633.0	-3,006.7	3,066.7	0.00	0.00	0.00	
10,700.0	90.00	268.97	7,452.0	-634.8	-3,106.7	3,165.9	0.00	0.00	0.00	
10,800.0	90.00	268.97	7,452.0	-636.6	-3,206.6	3,265.1	0.00	0.00	0.00	
10,900.0	90.00	268.97	7,452.0	-638.4	-3,306.6	3,364.2	0.00	0.00	0.00	
11,000.0	90.00	268.97	7,452.0	-640.1	-3,406.6	3,463.4	0.00	0.00	0.00	
11,100.0	90.00	268.97	7,452.0	-641.9	-3,506.6	3,562.6	0.00	0.00	0.00	
11,200.0	90.00	268.97	7,452.0	-643.7	-3,606.6	3,661.8	0.00	0.00	0.00	
11,300.0	90.00	268.97	7,452.0	-645.5	-3,706.6	3,761.0	0.00	0.00	0.00	
11,400.0	90.00	268.97	7,452.0	-647.3	-3,806.5	3,860.2	0.00	0.00	0.00	
11,500.0	90.00	268.97	7,452.0	-649.1	-3,906.5	3,959.4	0.00	0.00	0.00	
11,600.0	90.00	268.97	7,452.0	-650.9	-4,006.5	4,058.6	0.00	0.00	0.00	
11,700.0	90.00	268.97	7,452.0	-652.7	-4,106.5	4,157.7	0.00	0.00	0.00	
11,800.0	90.00	268.97	7,452.0	-654.5	-4,206.5	4,256.9	0.00	0.00	0.00	
11,900.0	90.00	268.97	7,452.0	-656.2	-4,306.5	4,356.1	0.00	0.00	0.00	
12,000.0	90.00	268.97	7,452.0	-658.0	-4,406.5	4,455.3	0.00	0.00	0.00	
12,095.0	90.00	268.97	7,452.0	-659.7	-4,501.4	4,549.5	0.00	0.00	0.00	
TD at 12095.0 - BHL 1235'FNL, 460'FWL										

Design Targets										
Target Name	Dip Angle (°)	Dip Dir. (°)	TVD (ft)	+N/-S (ft)	+E/-W (ft)	Northing (usft)	Easting (usft)	Latitude		
- hit/miss target										
- Shape								Longitude		
SHL 655'FNL, 310'FEL	0.00	0.00	1.0	0.0	0.0	1,338,106.65	3,134,292.62	40.260502		
- plan hits target center										
- Point										
BHL 1235'FNL, 460'FWL	0.00	0.00	7,452.0	-659.7	-4,501.5	1,337,422.52	3,129,795.00	40.258690		
- plan hits target center										
- Point										
LP 1235'FNL, 511'FEL	0.00	0.00	7,452.0	-582.7	-202.0	1,337,522.93	3,134,093.79	40.258902		
- plan hits target center										
- Point										

Plan Annotations					
Measured Depth (ft)	Vertical Depth (ft)	Local Coordinates			
		+N/-S (ft)	+E/-W (ft)	Comment	
1,200.0	1,200.0	0.0	0.0	Start Build 1.50	
6,991.0	6,941.8	-41.8	22.7	Start Build 11.21	
7,794.9	7,452.0	-538.7	292.0	Start DLS 1.00 TFO 90.00	
12,095.0	7,452.0	-570.0	309.0	TD at 12095.0	



Directional

Captiva Energy Partners

SEC.5-T3N-R68W

Stillroven Farm Pad Sec.5-T3N-R68W

Stillroven Farm 7

Wellbore #1

Plan #2 (6-5-17)

Anticollision Report

05 June, 2017



Directional

Company:	Captiva Energy Partners	Local Co-ordinate Reference:	Well Stillroven Farm 7
Project:	SEC.5-T3N-R68W	TVD Reference:	WELL @ 5098.0ft (Original Well Elev)
Reference Site:	Stillroven Farm Pad Sec.5-T3N-R68W	MD Reference:	WELL @ 5098.0ft (Original Well Elev)
Site Error:	0.0 ft	North Reference:	True
Reference Well:	Stillroven Farm 7	Survey Calculation Method:	Minimum Curvature
Well Error:	0.0 ft	Output errors are at	2.00 sigma
Reference Wellbore	Wellbore #1	Database:	US_EDM
Reference Design:	Plan #2 (6-5-17)	Offset TVD Reference:	Offset Datum

Reference	Plan #2 (6-5-17)		
Filter type:	NO GLOBAL FILTER: Using user defined selection & filtering criteria		
Interpolation Method:	Stations	Error Model:	ISCWSA
Depth Range:	Unlimited	Scan Method:	Closest Approach 3D
Results Limited by:	Maximum center-center distance of 500.0 ft	Error Surface:	Elliptical Conic
Warning Levels Evaluated at:	2.00 Sigma	Casing Method:	Not applied

Survey Tool Program	Date 6/5/2017			
From (ft)	To (ft)	Survey (Wellbore)	Tool Name	Description
0.0	12,095.0	Plan #2 (6-5-17) (Wellbore #1)	MWD	MWD - Standard

Summary						
Site Name	Reference Measured Depth (ft)	Offset Measured Depth (ft)	Distance Between Centres (ft)	Distance Between Ellipses (ft)	Separation Factor	Warning
Offset Well - Wellbore - Design						
Stillroven Farm Pad Sec.5-T3N-R68W						
Stillroven Farm 1 - Wellbore #1 - Plan #2 (6-5-17)	1,000.0	999.0	89.9	85.6	21.063	CC, ES
Stillroven Farm 1 - Wellbore #1 - Plan #2 (6-5-17)	1,300.0	1,293.6	99.3	93.7	17.824	SF
Stillroven Farm 10 - Wellbore #1 - Plan #2 (6-5-17)	600.0	600.0	45.0	42.5	18.199	CC, ES
Stillroven Farm 10 - Wellbore #1 - Plan #2 (6-5-17)	900.0	896.0	56.3	52.6	15.144	SF
Stillroven Farm 11 - Wellbore #1 - Plan #2 (6-5-17)	400.0	400.0	60.0	58.5	38.156	CC, ES
Stillroven Farm 11 - Wellbore #1 - Plan #2 (6-5-17)	4,400.0	4,348.2	498.2	475.9	22.273	SF
Stillroven Farm 12 - Wellbore #1 - Plan #2 (6-5-17)	200.0	200.0	75.1	74.4	111.344	CC, ES
Stillroven Farm 12 - Wellbore #1 - Plan #2 (6-5-17)	3,300.0	3,233.3	498.5	482.3	30.770	SF
Stillroven Farm 2 - Wellbore #1 - Plan #2 (6-5-17)	1,200.0	1,199.0	75.0	69.8	14.507	CC, ES
Stillroven Farm 2 - Wellbore #1 - Plan #2 (6-5-17)	1,300.0	1,297.8	76.9	71.3	13.766	SF
Stillroven Farm 3 - Wellbore #1 - Plan #2 (6-5-17)	1,200.0	1,199.0	59.9	54.8	11.597	CC, ES
Stillroven Farm 3 - Wellbore #1 - Plan #2 (6-5-17)	1,400.0	1,398.9	64.6	58.6	10.777	SF
Stillroven Farm 4 - Wellbore #1 - Plan #2 (6-5-17)	1,200.0	1,199.0	44.9	39.8	8.694	CC, ES
Stillroven Farm 4 - Wellbore #1 - Plan #2 (6-5-17)	1,300.0	1,299.0	46.1	40.5	8.242	SF
Stillroven Farm 5 - Wellbore #1 - Plan #2 (6-5-17)	1,200.0	1,200.0	29.9	24.7	5.785	CC, ES
Stillroven Farm 5 - Wellbore #1 - Plan #2 (6-5-17)	12,095.0	11,935.2	246.4	30.5	1.141	Level 2, SF
Stillroven Farm 6 - Wellbore #1 - Plan #2 (6-5-17)	1,200.0	1,200.0	14.9	9.7	2.882	CC, ES
Stillroven Farm 6 - Wellbore #1 - Plan #2 (6-5-17)	1,300.0	1,300.0	16.1	10.5	2.872	SF
Stillroven Farm 8 - Wellbore #1 - Plan #2 (6-5-17)	1,000.0	1,000.0	15.2	10.9	3.549	CC, ES
Stillroven Farm 8 - Wellbore #1 - Plan #2 (6-5-17)	12,095.0	11,904.9	275.4	96.5	1.539	SF
Stillroven Farm 9 - Wellbore #1 - Plan #2(6-5-17)	800.0	800.0	30.0	26.6	8.893	CC, ES
Stillroven Farm 9 - Wellbore #1 - Plan #2(6-5-17)	900.0	899.2	31.2	27.4	8.237	SF

Offset Design	Stillroven Farm Pad Sec.5-T3N-R68W - Stillroven Farm 1 - Wellbore #1 - Plan #2 (6-5-17)											Offset Site Error:	0.0 ft
Survey Program:	0-MWD											Offset Well Error:	0.0 ft
Reference	Offset	Semi Major Axis		Distance									
Measured Depth (ft)	Vertical Depth (ft)	Measured Depth (ft)	Vertical Depth (ft)	Reference (ft)	Offset (ft)	Highside Toolface (°)	Offset Wellbore Centre +N/-S (ft)	+E/-W (ft)	Between Centres (ft)	Between Ellipses (ft)	Minimum Separation (ft)	Separation Factor	Warning
0.0	0.0	0.0	0.0	0.0	0.0	0.18	89.9	0.3	89.9				
100.0	100.0	99.0	99.0	0.1	0.1	0.18	89.9	0.3	89.9	89.7	0.22	401.988	
200.0	200.0	199.0	199.0	0.3	0.3	0.18	89.9	0.3	89.9	89.2	0.67	133.773	
300.0	300.0	299.0	299.0	0.6	0.6	0.18	89.9	0.3	89.9	88.8	1.12	80.157	
400.0	400.0	399.0	399.0	0.8	0.8	0.18	89.9	0.3	89.9	88.3	1.57	57.222	
500.0	500.0	499.0	499.0	1.0	1.0	0.18	89.9	0.3	89.9	87.9	2.02	44.492	

CC - Min centre to center distance or convergent point, SF - min separation factor, ES - min ellipse separation

Company:	Captiva Energy Partners	Local Co-ordinate Reference:	Well Stillroven Farm 7
Project:	SEC.5-T3N-R68W	TVD Reference:	WELL @ 5098.0ft (Original Well Elev)
Reference Site:	Stillroven Farm Pad Sec.5-T3N-R68W	MD Reference:	WELL @ 5098.0ft (Original Well Elev)
Site Error:	0.0 ft	North Reference:	True
Reference Well:	Stillroven Farm 7	Survey Calculation Method:	Minimum Curvature
Well Error:	0.0 ft	Output errors are at	2.00 sigma
Reference Wellbore	Wellbore #1	Database:	US_EDM
Reference Design:	Plan #2 (6-5-17)	Offset TVD Reference:	Offset Datum

Offset Design Stillroven Farm Pad Sec.5-T3N-R68W - Stillroven Farm 1 - Wellbore #1 - Plan #2 (6-5-17)												Offset Site Error:	0.0 ft
Survey Program: 0-MWD												Offset Well Error:	0.0 ft
Reference		Offset		Semi Major Axis			Distance						
Measured Depth (ft)	Vertical Depth (ft)	Measured Depth (ft)	Vertical Depth (ft)	Reference (ft)	Offset (ft)	Highside Toolface (°)	Offset Wellbore Centre +N/-S (ft)	+E/-W (ft)	Between Centres (ft)	Between Ellipses (ft)	Minimum Separation (ft)	Separation Factor	Warning
600.0	600.0	599.0	599.0	1.2	1.2	0.18	89.9	0.3	89.9	87.4	2.47	36.395	
700.0	700.0	699.0	699.0	1.5	1.5	0.18	89.9	0.3	89.9	87.0	2.92	30.791	
800.0	800.0	799.0	799.0	1.7	1.7	0.18	89.9	0.3	89.9	86.5	3.37	26.683	
900.0	900.0	899.0	899.0	1.9	1.9	0.18	89.9	0.3	89.9	86.1	3.82	23.542	
1,000.0	1,000.0	999.0	999.0	2.1	2.1	0.18	89.9	0.3	89.9	85.6	4.27	21.063 CC, ES	
1,100.0	1,100.0	1,097.4	1,097.4	2.4	2.4	0.74	90.8	1.2	90.8	86.1	4.71	19.272	
1,200.0	1,200.0	1,195.6	1,195.6	2.6	2.6	2.40	93.4	3.9	93.5	88.3	5.15	18.151	
1,300.0	1,300.0	1,293.6	1,293.3	2.8	2.8	-146.95	97.7	8.5	99.3	93.7	5.57	17.824 SF	
1,400.0	1,399.9	1,391.0	1,390.3	3.0	3.0	-144.90	103.7	14.8	109.3	103.3	5.97	18.298	
1,500.0	1,499.7	1,487.7	1,486.3	3.1	3.3	-143.13	111.3	22.8	123.5	117.1	6.39	19.332	
1,600.0	1,599.3	1,584.7	1,582.4	3.4	3.5	-141.78	120.5	32.4	141.5	134.7	6.82	20.762	
1,700.0	1,698.6	1,682.6	1,679.4	3.6	3.8	-141.18	129.9	42.4	161.9	154.6	7.26	22.309	
1,803.3	1,800.8	1,783.2	1,779.0	3.8	4.1	-141.18	139.6	52.6	185.0	177.3	7.72	23.953	
1,900.0	1,896.3	1,877.3	1,872.1	4.1	4.3	-141.58	148.7	62.1	207.7	199.5	8.18	25.371	
2,000.0	1,995.0	1,974.5	1,968.4	4.4	4.6	-141.91	158.0	72.0	231.1	222.4	8.67	26.645	
2,100.0	2,093.8	2,071.7	2,064.7	4.7	4.9	-142.18	167.4	81.8	254.5	245.3	9.17	27.751	
2,200.0	2,192.6	2,168.9	2,160.9	5.0	5.2	-142.40	176.8	91.7	277.9	268.3	9.68	28.718	
2,300.0	2,291.3	2,266.1	2,257.2	5.3	5.6	-142.59	186.2	101.6	301.4	291.2	10.19	29.567	
2,400.0	2,390.1	2,363.3	2,353.4	5.6	5.9	-142.75	195.5	111.4	324.8	314.1	10.71	30.318	
2,500.0	2,488.8	2,460.5	2,449.7	6.0	6.2	-142.89	204.9	121.3	348.2	337.0	11.24	30.984	
2,600.0	2,587.6	2,557.7	2,545.9	6.3	6.5	-143.01	214.3	131.1	371.7	359.9	11.77	31.578	
2,700.0	2,686.3	2,655.0	2,642.2	6.7	6.8	-143.12	223.6	141.0	395.1	382.8	12.31	32.111	
2,800.0	2,785.1	2,752.2	2,738.4	7.0	7.1	-143.21	233.0	150.9	418.6	405.7	12.84	32.590	
2,900.0	2,883.8	2,849.4	2,834.7	7.4	7.4	-143.30	242.4	160.7	442.0	428.6	13.38	33.023	
3,000.0	2,982.6	2,946.6	2,930.9	7.7	7.8	-143.38	251.8	170.6	465.5	451.5	13.93	33.416	
3,100.0	3,081.4	3,043.8	3,027.2	8.1	8.1	-143.44	261.1	180.4	488.9	474.4	14.48	33.774	

Company:	Captiva Energy Partners	Local Co-ordinate Reference:	Well Stillroven Farm 7
Project:	SEC.5-T3N-R68W	TVD Reference:	WELL @ 5098.0ft (Original Well Elev)
Reference Site:	Stillroven Farm Pad Sec.5-T3N-R68W	MD Reference:	WELL @ 5098.0ft (Original Well Elev)
Site Error:	0.0 ft	North Reference:	True
Reference Well:	Stillroven Farm 7	Survey Calculation Method:	Minimum Curvature
Well Error:	0.0 ft	Output errors are at	2.00 sigma
Reference Wellbore	Wellbore #1	Database:	US_EDM
Reference Design:	Plan #2 (6-5-17)	Offset TVD Reference:	Offset Datum

Offset Design													Offset Site Error:	0.0 ft
Survey Program: 0-MWD													Offset Well Error:	0.0 ft
Reference		Offset		Semi Major Axis			Distance							Warning
Measured Depth (ft)	Vertical Depth (ft)	Measured Depth (ft)	Vertical Depth (ft)	Reference (ft)	Offset (ft)	Highside Toolface (°)	Offset Wellbore Centre +N/-S (ft)	+E/-W (ft)	Between Centres (ft)	Between Ellipses (ft)	Minimum Separation (ft)	Separation Factor		
0.0	0.0	0.0	0.0	0.0	0.0	-179.89	-45.0	-0.1	45.0					
100.0	100.0	100.0	100.0	0.1	0.1	-179.89	-45.0	-0.1	45.0	44.8	0.22	200.189		
200.0	200.0	200.0	200.0	0.3	0.3	-179.89	-45.0	-0.1	45.0	44.3	0.67	66.730		
300.0	300.0	300.0	300.0	0.6	0.6	-179.89	-45.0	-0.1	45.0	43.9	1.12	40.038		
400.0	400.0	400.0	400.0	0.8	0.8	-179.89	-45.0	-0.1	45.0	43.4	1.57	28.598		
500.0	500.0	500.0	500.0	1.0	1.0	-179.89	-45.0	-0.1	45.0	43.0	2.02	22.243		
600.0	600.0	600.0	600.0	1.2	1.2	-179.89	-45.0	-0.1	45.0	42.5	2.47	18.199 CC, ES		
700.0	700.0	698.9	698.8	1.5	1.4	179.70	-46.2	0.2	46.2	43.4	2.89	15.986		
800.0	800.0	797.6	797.5	1.7	1.6	178.60	-49.9	1.2	50.0	46.7	3.30	15.159		
900.0	900.0	896.0	895.7	1.9	1.8	177.10	-56.1	2.8	56.3	52.6	3.72	15.144 SF		
1,000.0	1,000.0	994.1	993.4	2.1	2.0	175.49	-64.6	5.1	65.2	61.0	4.15	15.700		
1,100.0	1,100.0	1,091.6	1,090.3	2.4	2.3	173.98	-75.5	8.0	76.6	72.0	4.60	16.665		
1,200.0	1,200.0	1,188.5	1,186.2	2.6	2.5	172.65	-88.8	11.5	90.5	85.5	5.05	17.921		
1,300.0	1,300.0	1,284.9	1,281.2	2.8	2.8	20.15	-104.2	15.5	105.8	100.4	5.43	19.493		
1,400.0	1,399.9	1,380.9	1,375.5	3.0	3.2	19.70	-121.9	20.2	121.1	115.3	5.83	20.789		
1,500.0	1,499.7	1,476.5	1,468.8	3.1	3.6	19.59	-141.8	25.4	136.5	130.2	6.24	21.877		
1,600.0	1,599.3	1,573.5	1,563.1	3.4	4.0	19.73	-164.0	31.3	151.6	144.9	6.67	22.731		
1,700.0	1,698.6	1,672.7	1,659.4	3.6	4.4	20.15	-187.0	37.4	164.5	157.4	7.11	23.148		
1,803.3	1,800.8	1,775.4	1,759.0	3.8	4.9	20.83	-210.9	43.7	175.4	167.8	7.58	23.130		
1,900.0	1,896.3	1,871.6	1,852.5	4.1	5.4	21.60	-233.2	49.5	184.4	176.3	8.05	22.900		
2,000.0	1,995.0	1,971.2	1,949.1	4.4	5.8	22.32	-256.3	55.6	193.7	185.2	8.55	22.661		
2,100.0	2,093.8	2,070.7	2,045.7	4.7	6.3	22.97	-279.4	61.7	203.1	194.0	9.06	22.424		
2,200.0	2,192.6	2,170.2	2,142.4	5.0	6.8	23.56	-302.5	67.8	212.4	202.9	9.57	22.193		
2,300.0	2,291.3	2,269.8	2,239.0	5.3	7.3	24.10	-325.6	73.9	221.8	211.7	10.10	21.969		
2,400.0	2,390.1	2,369.3	2,335.6	5.6	7.8	24.60	-348.7	80.0	231.3	220.6	10.63	21.752		
2,500.0	2,488.8	2,468.9	2,432.3	6.0	8.3	25.06	-371.8	86.1	240.7	229.5	11.17	21.545		
2,600.0	2,587.6	2,568.4	2,528.9	6.3	8.8	25.49	-394.9	92.2	250.1	238.4	11.72	21.347		
2,700.0	2,686.3	2,667.9	2,625.5	6.7	9.3	25.88	-418.0	98.3	259.6	247.3	12.27	21.157		
2,800.0	2,785.1	2,767.5	2,722.1	7.0	9.8	26.25	-441.1	104.4	269.0	256.2	12.83	20.977		
2,900.0	2,883.8	2,867.0	2,818.8	7.4	10.3	26.59	-464.2	110.5	278.5	265.1	13.39	20.806		
3,000.0	2,982.6	2,966.5	2,915.4	7.7	10.8	26.91	-487.3	116.6	288.0	274.1	13.95	20.643		
3,100.0	3,081.4	3,066.1	3,012.0	8.1	11.3	27.21	-510.4	122.6	297.5	283.0	14.52	20.488		
3,200.0	3,180.1	3,165.6	3,108.6	8.4	11.8	27.49	-533.5	128.7	307.0	291.9	15.09	20.340		
3,300.0	3,278.9	3,265.1	3,205.3	8.8	12.3	27.76	-556.6	134.8	316.5	300.9	15.67	20.200		
3,400.0	3,377.6	3,364.7	3,301.9	9.1	12.8	28.00	-579.7	140.9	326.0	309.8	16.25	20.066		
3,500.0	3,476.4	3,464.2	3,398.5	9.5	13.3	28.24	-602.8	147.0	335.6	318.7	16.83	19.940		
3,600.0	3,575.1	3,563.8	3,495.2	9.9	13.8	28.46	-625.9	153.1	345.1	327.7	17.41	19.819		
3,700.0	3,673.9	3,663.3	3,591.8	10.2	14.4	28.67	-649.0	159.2	354.6	336.6	18.00	19.703		
3,800.0	3,772.6	3,762.8	3,688.4	10.6	14.9	28.87	-672.1	165.3	364.2	345.6	18.59	19.594		
3,900.0	3,871.4	3,862.4	3,785.0	11.0	15.4	29.06	-695.2	171.4	373.7	354.5	19.17	19.489		
4,000.0	3,970.2	3,961.9	3,881.7	11.3	15.9	29.23	-718.3	177.5	383.2	363.5	19.77	19.389		
4,100.0	4,068.9	4,061.4	3,978.3	11.7	16.4	29.40	-741.4	183.6	392.8	372.4	20.36	19.293		
4,200.0	4,167.7	4,161.0	4,074.9	12.1	16.9	29.57	-764.5	189.6	402.3	381.4	20.95	19.202		
4,300.0	4,266.4	4,260.5	4,171.6	12.4	17.4	29.72	-787.6	195.7	411.9	390.3	21.55	19.115		
4,400.0	4,365.2	4,360.1	4,268.2	12.8	17.9	29.87	-810.7	201.8	421.4	399.3	22.15	19.031		
4,500.0	4,463.9	4,459.6	4,364.8	13.2	18.4	30.01	-833.8	207.9	431.0	408.3	22.74	18.951		
4,600.0	4,562.7	4,559.1	4,461.4	13.6	18.9	30.14	-856.9	214.0	440.6	417.2	23.34	18.874		
4,700.0	4,661.4	4,658.7	4,558.1	13.9	19.5	30.27	-880.0	220.1	450.1	426.2	23.94	18.800		
4,800.0	4,760.2	4,758.2	4,654.7	14.3	20.0	30.40	-903.1	226.2	459.7	435.1	24.54	18.729		
4,900.0	4,859.0	4,857.7	4,751.3	14.7	20.5	30.52	-926.2	232.3	469.3	444.1	25.15	18.661		
5,000.0	4,957.7	4,957.3	4,847.9	15.1	21.0	30.63	-949.3	238.4	478.8	453.1	25.75	18.596		
5,100.0	5,056.5	5,056.8	4,944.6	15.4	21.5	30.74	-972.4	244.5	488.4	462.1	26.35	18.533		

CC - Min centre to center distance or convergent point, SF - min separation factor, ES - min ellipse separation

Company:	Captiva Energy Partners	Local Co-ordinate Reference:	Well Stillroven Farm 7
Project:	SEC.5-T3N-R68W	TVD Reference:	WELL @ 5098.0ft (Original Well Elev)
Reference Site:	Stillroven Farm Pad Sec.5-T3N-R68W	MD Reference:	WELL @ 5098.0ft (Original Well Elev)
Site Error:	0.0 ft	North Reference:	True
Reference Well:	Stillroven Farm 7	Survey Calculation Method:	Minimum Curvature
Well Error:	0.0 ft	Output errors are at	2.00 sigma
Reference Wellbore	Wellbore #1	Database:	US_EDM
Reference Design:	Plan #2 (6-5-17)	Offset TVD Reference:	Offset Datum

Offset Design												Offset Site Error:	0.0 ft
Stillroven Farm Pad Sec.5-T3N-R68W - Stillroven Farm 10 - Wellbore #1 - Plan #2 (6-5-17)												Offset Well Error:	0.0 ft
Survey Program: 0-MWD													
Reference		Offset		Semi Major Axis			Distance						Warning
Measured Depth (ft)	Vertical Depth (ft)	Measured Depth (ft)	Vertical Depth (ft)	Reference (ft)	Offset (ft)	Highside Toolface (°)	Offset Wellbore Centre +N/-S (ft)	+E/-W (ft)	Between Centres (ft)	Between Ellipses (ft)	Minimum Separation (ft)	Separation Factor	
5,200.0	5,155.2	5,156.3	5,041.2	15.8	22.0	30.85	-995.5	250.6	498.0	471.0	26.96	18.473	

Company:	Captiva Energy Partners	Local Co-ordinate Reference:	Well Stillroven Farm 7
Project:	SEC.5-T3N-R68W	TVD Reference:	WELL @ 5098.0ft (Original Well Elev)
Reference Site:	Stillroven Farm Pad Sec.5-T3N-R68W	MD Reference:	WELL @ 5098.0ft (Original Well Elev)
Site Error:	0.0 ft	North Reference:	True
Reference Well:	Stillroven Farm 7	Survey Calculation Method:	Minimum Curvature
Well Error:	0.0 ft	Output errors are at	2.00 sigma
Reference Wellbore	Wellbore #1	Database:	US_EDM
Reference Design:	Plan #2 (6-5-17)	Offset TVD Reference:	Offset Datum

Offset Design													Offset Site Error:	0.0 ft
Survey Program: 0-MWD													Offset Well Error:	0.0 ft
Reference		Offset		Semi Major Axis			Distance							Warning
Measured Depth (ft)	Vertical Depth (ft)	Measured Depth (ft)	Vertical Depth (ft)	Reference (ft)	Offset (ft)	Highside Toolface (°)	Offset Wellbore Centre +N/-S (ft)	+E/-W (ft)	Between Centres (ft)	Between Ellipses (ft)	Minimum Separation (ft)	Separation Factor		
0.0	0.0	0.0	0.0	0.0	0.0	-179.92	-60.0	-0.1	60.0					
100.0	100.0	100.0	100.0	0.1	0.1	-179.92	-60.0	-0.1	60.0	59.8	0.22	267.092		
200.0	200.0	200.0	200.0	0.3	0.3	-179.92	-60.0	-0.1	60.0	59.4	0.67	89.031		
300.0	300.0	300.0	300.0	0.6	0.6	-179.92	-60.0	-0.1	60.0	58.9	1.12	53.418		
400.0	400.0	400.0	400.0	0.8	0.8	-179.92	-60.0	-0.1	60.0	58.5	1.57	38.156 CC, ES		
500.0	500.0	498.5	498.5	1.0	1.0	179.80	-61.3	0.2	61.3	59.3	1.99	30.733		
600.0	600.0	596.8	596.7	1.2	1.2	179.02	-65.0	1.1	65.1	62.6	2.41	27.037		
700.0	700.0	694.9	694.6	1.5	1.4	177.90	-71.1	2.6	71.3	68.5	2.83	25.176		
800.0	800.0	792.6	791.9	1.7	1.6	176.63	-79.6	4.7	80.2	76.9	3.28	24.474		
900.0	900.0	889.8	888.4	1.9	1.9	175.36	-90.5	7.3	91.5	87.8	3.73	24.535		
1,000.0	1,000.0	986.3	984.0	2.1	2.1	174.19	-103.7	10.5	105.4	101.2	4.20	25.110		
1,100.0	1,100.0	1,082.1	1,078.5	2.4	2.5	173.15	-119.1	14.3	121.8	117.1	4.68	26.038		
1,200.0	1,200.0	1,177.1	1,171.7	2.6	2.8	172.26	-136.6	18.6	140.7	135.5	5.17	27.208		
1,300.0	1,300.0	1,271.3	1,263.8	2.8	3.2	20.01	-156.2	23.3	160.8	155.3	5.49	29.302		
1,400.0	1,399.9	1,366.2	1,356.0	3.0	3.6	19.65	-178.1	28.7	180.8	174.9	5.91	30.619		
1,500.0	1,499.7	1,464.5	1,451.3	3.1	4.1	19.58	-201.4	34.4	199.1	192.8	6.34	31.410		
1,600.0	1,599.3	1,563.3	1,547.0	3.4	4.6	19.76	-224.8	40.1	215.0	208.2	6.78	31.690		
1,700.0	1,698.6	1,662.3	1,643.1	3.6	5.1	20.14	-248.2	45.8	228.4	221.2	7.24	31.533		
1,803.3	1,800.8	1,764.9	1,742.6	3.8	5.6	20.73	-272.6	51.7	239.7	232.0	7.73	31.005		
1,900.0	1,896.3	1,861.2	1,836.0	4.1	6.1	21.39	-295.4	57.3	249.2	240.9	8.21	30.348		
2,000.0	1,995.0	1,960.6	1,932.4	4.4	6.6	22.02	-318.9	63.0	258.9	250.2	8.71	29.713		
2,100.0	2,093.8	2,060.1	2,028.9	4.7	7.1	22.61	-342.5	68.7	268.7	259.5	9.23	29.121		
2,200.0	2,192.6	2,159.6	2,125.4	5.0	7.6	23.15	-366.1	74.5	278.6	268.8	9.75	28.569		
2,300.0	2,291.3	2,259.1	2,221.9	5.3	8.1	23.66	-389.7	80.2	288.4	278.1	10.28	28.054		
2,400.0	2,390.1	2,358.6	2,318.3	5.6	8.6	24.13	-413.2	86.0	298.3	287.5	10.82	27.574		
2,500.0	2,488.8	2,458.1	2,414.8	6.0	9.1	24.58	-436.8	91.7	308.2	296.8	11.36	27.126		
2,600.0	2,587.6	2,557.5	2,511.3	6.3	9.6	24.99	-460.4	97.5	318.1	306.2	11.91	26.708		
2,700.0	2,686.3	2,657.0	2,607.8	6.7	10.1	25.38	-484.0	103.2	328.0	315.6	12.46	26.317		
2,800.0	2,785.1	2,756.5	2,704.3	7.0	10.6	25.75	-507.6	109.0	338.0	324.9	13.02	25.951		
2,900.0	2,883.8	2,856.0	2,800.7	7.4	11.2	26.10	-531.1	114.7	347.9	334.3	13.59	25.608		
3,000.0	2,982.6	2,955.5	2,897.2	7.7	11.7	26.42	-554.7	120.5	357.9	343.7	14.15	25.286		
3,100.0	3,081.4	3,055.0	2,993.7	8.1	12.2	26.73	-578.3	126.2	367.8	353.1	14.72	24.984		
3,200.0	3,180.1	3,154.4	3,090.2	8.4	12.7	27.03	-601.9	131.9	377.8	362.5	15.30	24.699		
3,300.0	3,278.9	3,253.9	3,186.6	8.8	13.2	27.31	-625.4	137.7	387.8	372.0	15.87	24.431		
3,400.0	3,377.6	3,353.4	3,283.1	9.1	13.7	27.57	-649.0	143.4	397.8	381.4	16.45	24.178		
3,500.0	3,476.4	3,452.9	3,379.6	9.5	14.3	27.82	-672.6	149.2	407.8	390.8	17.04	23.939		
3,600.0	3,575.1	3,552.4	3,476.1	9.9	14.8	28.06	-696.2	154.9	417.9	400.2	17.62	23.714		
3,700.0	3,673.9	3,651.8	3,572.5	10.2	15.3	28.29	-719.8	160.7	427.9	409.7	18.21	23.500		
3,800.0	3,772.6	3,751.3	3,669.0	10.6	15.8	28.51	-743.3	166.4	437.9	419.1	18.80	23.297		
3,900.0	3,871.4	3,850.8	3,765.5	11.0	16.3	28.72	-766.9	172.2	448.0	428.6	19.39	23.104		
4,000.0	3,970.2	3,950.3	3,862.0	11.3	16.8	28.91	-790.5	177.9	458.0	438.0	19.98	22.921		
4,100.0	4,068.9	4,049.8	3,958.5	11.7	17.4	29.10	-814.1	183.7	468.1	447.5	20.58	22.747		
4,200.0	4,167.7	4,149.3	4,054.9	12.1	17.9	29.29	-837.6	189.4	478.1	456.9	21.17	22.582		
4,300.0	4,266.4	4,248.7	4,151.4	12.4	18.4	29.46	-861.2	195.1	488.2	466.4	21.77	22.424		
4,400.0	4,365.2	4,348.2	4,247.9	12.8	18.9	29.63	-884.8	200.9	498.2	475.9	22.37	22.273 SF		

Company:	Captiva Energy Partners	Local Co-ordinate Reference:	Well Stillroven Farm 7
Project:	SEC.5-T3N-R68W	TVD Reference:	WELL @ 5098.0ft (Original Well Elev)
Reference Site:	Stillroven Farm Pad Sec.5-T3N-R68W	MD Reference:	WELL @ 5098.0ft (Original Well Elev)
Site Error:	0.0 ft	North Reference:	True
Reference Well:	Stillroven Farm 7	Survey Calculation Method:	Minimum Curvature
Well Error:	0.0 ft	Output errors are at	2.00 sigma
Reference Wellbore	Wellbore #1	Database:	US_EDM
Reference Design:	Plan #2 (6-5-17)	Offset TVD Reference:	Offset Datum

Offset Design													Offset Site Error:	0.0 ft
Survey Program: 0-MWD													Offset Well Error:	0.0 ft
Reference		Offset		Semi Major Axis			Distance							Warning
Measured Depth (ft)	Vertical Depth (ft)	Measured Depth (ft)	Vertical Depth (ft)	Reference (ft)	Offset (ft)	Highside Toolface (°)	Offset Wellbore Centre +N/-S (ft)	+E/-W (ft)	Between Centres (ft)	Between Ellipses (ft)	Minimum Separation (ft)	Separation Factor		
0.0	0.0	0.0	0.0	0.0	0.0	-179.94	-75.1	-0.1	75.1					
100.0	100.0	100.0	100.0	0.1	0.1	-179.94	-75.1	-0.1	75.1	74.9	0.22	334.031		
200.0	200.0	200.0	200.0	0.3	0.3	-179.94	-75.1	-0.1	75.1	74.4	0.67	111.344	CC, ES	
300.0	300.0	298.1	298.1	0.6	0.5	179.86	-76.3	0.2	76.3	75.2	1.10	69.569		
400.0	400.0	396.1	396.0	0.8	0.7	179.30	-80.0	1.0	80.1	78.6	1.52	52.642		
500.0	500.0	493.8	493.5	1.0	1.0	178.47	-86.1	2.3	86.4	84.4	1.96	43.994		
600.0	600.0	591.1	590.4	1.2	1.2	177.50	-94.6	4.1	95.2	92.8	2.42	39.348		
700.0	700.0	687.9	686.6	1.5	1.5	176.48	-105.5	6.5	106.5	103.7	2.89	36.894		
800.0	800.0	784.1	781.8	1.7	1.8	175.51	-118.6	9.3	120.4	117.0	3.37	35.746		
900.0	900.0	879.5	876.0	1.9	2.1	174.61	-134.0	12.6	136.7	132.9	3.86	35.422		
1,000.0	1,000.0	974.1	968.9	2.1	2.5	173.81	-151.5	16.4	155.5	151.2	4.36	35.640		
1,100.0	1,100.0	1,067.8	1,060.3	2.4	2.9	173.12	-171.0	20.6	176.8	171.9	4.88	36.225		
1,200.0	1,200.0	1,160.4	1,150.3	2.6	3.3	172.52	-192.5	25.3	200.4	195.0	5.41	37.061		
1,300.0	1,300.0	1,253.7	1,240.4	2.8	3.8	20.44	-216.1	30.4	225.1	219.5	5.62	40.073		
1,400.0	1,399.9	1,351.0	1,334.2	3.0	4.3	20.19	-241.4	35.8	248.0	241.9	6.05	40.989		
1,500.0	1,499.7	1,448.9	1,428.6	3.1	4.9	20.17	-266.8	41.3	268.5	262.0	6.50	41.310		
1,600.0	1,599.3	1,547.2	1,523.4	3.4	5.4	20.33	-292.3	46.8	286.6	279.7	6.96	41.165		
1,700.0	1,698.6	1,645.9	1,618.6	3.6	5.9	20.65	-318.0	52.4	302.3	294.9	7.44	40.643		
1,803.3	1,800.8	1,748.2	1,717.2	3.8	6.5	21.13	-344.5	58.1	316.0	308.1	7.94	39.783		
1,900.0	1,896.3	1,844.2	1,809.7	4.1	7.0	21.69	-369.4	63.5	327.7	319.3	8.43	38.856		
2,000.0	1,995.0	1,943.4	1,905.4	4.4	7.6	22.24	-395.2	69.1	339.8	330.8	8.95	37.966		
2,100.0	2,093.8	2,042.7	2,001.0	4.7	8.1	22.74	-420.9	74.6	351.9	342.4	9.47	37.143		
2,200.0	2,192.6	2,141.9	2,096.7	5.0	8.7	23.21	-446.7	80.2	364.0	354.0	10.01	36.380		
2,300.0	2,291.3	2,241.1	2,192.3	5.3	9.2	23.65	-472.5	85.7	376.2	365.6	10.54	35.672		
2,400.0	2,390.1	2,340.3	2,288.0	5.6	9.7	24.06	-498.2	91.3	388.3	377.2	11.09	35.015		
2,500.0	2,488.8	2,439.5	2,383.7	6.0	10.3	24.45	-524.0	96.9	400.5	388.9	11.64	34.405		
2,600.0	2,587.6	2,538.7	2,479.3	6.3	10.8	24.82	-549.7	102.4	412.7	400.5	12.20	33.837		
2,700.0	2,686.3	2,638.0	2,575.0	6.7	11.4	25.16	-575.5	108.0	424.9	412.2	12.76	33.307		
2,800.0	2,785.1	2,737.2	2,670.6	7.0	12.0	25.49	-601.2	113.6	437.2	423.9	13.32	32.813		
2,900.0	2,883.8	2,836.4	2,766.3	7.4	12.5	25.79	-627.0	119.1	449.4	435.5	13.89	32.350		
3,000.0	2,982.6	2,935.6	2,861.9	7.7	13.1	26.08	-652.7	124.7	461.7	447.2	14.47	31.917		
3,100.0	3,081.4	3,034.8	2,957.6	8.1	13.6	26.36	-678.5	130.2	474.0	458.9	15.04	31.511		
3,200.0	3,180.1	3,134.1	3,053.2	8.4	14.2	26.62	-704.3	135.8	486.3	470.6	15.62	31.129		
3,300.0	3,278.9	3,233.3	3,148.9	8.8	14.7	26.87	-730.0	141.4	498.5	482.3	16.20	30.770	SF	

Company:	Captiva Energy Partners	Local Co-ordinate Reference:	Well Stillroven Farm 7
Project:	SEC.5-T3N-R68W	TVD Reference:	WELL @ 5098.0ft (Original Well Elev)
Reference Site:	Stillroven Farm Pad Sec.5-T3N-R68W	MD Reference:	WELL @ 5098.0ft (Original Well Elev)
Site Error:	0.0 ft	North Reference:	True
Reference Well:	Stillroven Farm 7	Survey Calculation Method:	Minimum Curvature
Well Error:	0.0 ft	Output errors are at	2.00 sigma
Reference Wellbore	Wellbore #1	Database:	US_EDM
Reference Design:	Plan #2 (6-5-17)	Offset TVD Reference:	Offset Datum

Offset Design													Offset Site Error:	0.0 ft
Survey Program: 0-MWD													Offset Well Error:	0.0 ft
Reference		Offset		Semi Major Axis			Distance							Warning
Measured Depth (ft)	Vertical Depth (ft)	Measured Depth (ft)	Vertical Depth (ft)	Reference (ft)	Offset (ft)	Highside Toolface (°)	Offset Wellbore Centre +N/-S (ft)	+E/-W (ft)	Between Centres (ft)	Between Ellipses (ft)	Minimum Separation (ft)	Separation Factor		
0.0	0.0	0.0	0.0	0.0	0.0	0.13	75.0	0.2	75.0					
100.0	100.0	99.0	99.0	0.1	0.1	0.13	75.0	0.2	75.0	74.7	0.22	335.200		
200.0	200.0	199.0	199.0	0.3	0.3	0.13	75.0	0.2	75.0	74.3	0.67	111.547		
300.0	300.0	299.0	299.0	0.6	0.6	0.13	75.0	0.2	75.0	73.8	1.12	66.839		
400.0	400.0	399.0	399.0	0.8	0.8	0.13	75.0	0.2	75.0	73.4	1.57	47.715		
500.0	500.0	499.0	499.0	1.0	1.0	0.13	75.0	0.2	75.0	72.9	2.02	37.100		
600.0	600.0	599.0	599.0	1.2	1.2	0.13	75.0	0.2	75.0	72.5	2.47	30.348		
700.0	700.0	699.0	699.0	1.5	1.5	0.13	75.0	0.2	75.0	72.0	2.92	25.676		
800.0	800.0	799.0	799.0	1.7	1.7	0.13	75.0	0.2	75.0	71.6	3.37	22.250		
900.0	900.0	899.0	899.0	1.9	1.9	0.13	75.0	0.2	75.0	71.1	3.82	19.631		
1,000.0	1,000.0	999.0	999.0	2.1	2.1	0.13	75.0	0.2	75.0	70.7	4.27	17.563		
1,100.0	1,100.0	1,099.0	1,099.0	2.4	2.4	0.13	75.0	0.2	75.0	70.2	4.72	15.890		
1,200.0	1,200.0	1,199.0	1,199.0	2.6	2.6	0.13	75.0	0.2	75.0	69.8	5.17	14.507 CC, ES		
1,300.0	1,300.0	1,297.8	1,297.8	2.8	2.8	-151.10	75.7	1.2	76.9	71.3	5.58	13.766 SF		
1,400.0	1,399.9	1,396.5	1,396.4	3.0	3.0	-150.21	77.9	4.3	82.5	76.6	5.97	13.817		
1,500.0	1,499.7	1,494.6	1,494.3	3.1	3.2	-148.97	81.5	9.4	92.1	85.7	6.38	14.439		
1,600.0	1,599.3	1,592.1	1,591.5	3.4	3.5	-147.59	86.6	16.6	105.4	98.6	6.79	15.525		
1,700.0	1,698.6	1,689.6	1,688.3	3.6	3.7	-146.30	93.0	25.6	122.5	115.3	7.22	16.963		
1,803.3	1,800.8	1,790.8	1,788.8	3.8	3.9	-145.72	99.9	35.3	142.7	135.0	7.68	18.584		
1,900.0	1,896.3	1,885.5	1,882.8	4.1	4.2	-145.69	106.3	44.4	162.6	154.5	8.13	20.014		
2,000.0	1,995.0	1,983.3	1,980.0	4.4	4.5	-145.67	113.0	53.8	183.3	174.7	8.60	21.300		
2,100.0	2,093.8	2,081.2	2,077.1	4.7	4.7	-145.65	119.7	63.2	203.9	194.8	9.09	22.428		
2,200.0	2,192.6	2,179.0	2,174.3	5.0	5.0	-145.64	126.3	72.6	224.6	215.0	9.59	23.417		
2,300.0	2,291.3	2,276.9	2,271.5	5.3	5.3	-145.63	133.0	82.0	245.2	235.1	10.10	24.290		
2,400.0	2,390.1	2,374.7	2,368.6	5.6	5.6	-145.62	139.7	91.4	265.9	255.3	10.61	25.064		
2,500.0	2,488.8	2,472.6	2,465.8	6.0	5.8	-145.61	146.4	100.8	286.5	275.4	11.13	25.753		
2,600.0	2,587.6	2,570.4	2,563.0	6.3	6.1	-145.60	153.0	110.2	307.2	295.5	11.65	26.369		
2,700.0	2,686.3	2,668.2	2,660.1	6.7	6.4	-145.60	159.7	119.6	327.8	315.6	12.18	26.923		
2,800.0	2,785.1	2,766.1	2,757.3	7.0	6.7	-145.59	166.4	129.0	348.5	335.7	12.71	27.423		
2,900.0	2,883.8	2,863.9	2,854.4	7.4	7.0	-145.59	173.0	138.4	369.1	355.9	13.24	27.876		
3,000.0	2,982.6	2,961.8	2,951.6	7.7	7.3	-145.58	179.7	147.8	389.7	376.0	13.78	28.288		
3,100.0	3,081.4	3,059.6	3,048.8	8.1	7.6	-145.58	186.4	157.2	410.4	396.1	14.32	28.663		
3,200.0	3,180.1	3,157.5	3,145.9	8.4	7.9	-145.58	193.0	166.6	431.0	416.2	14.86	29.007		
3,300.0	3,278.9	3,255.3	3,243.1	8.8	8.2	-145.57	199.7	176.0	451.7	436.3	15.40	29.322		
3,400.0	3,377.6	3,353.2	3,340.3	9.1	8.4	-145.57	206.4	185.4	472.3	456.4	15.95	29.613		
3,500.0	3,476.4	3,451.0	3,437.4	9.5	8.7	-145.57	213.1	194.7	493.0	476.5	16.50	29.881		

Company:	Captiva Energy Partners	Local Co-ordinate Reference:	Well Stillroven Farm 7
Project:	SEC.5-T3N-R68W	TVD Reference:	WELL @ 5098.0ft (Original Well Elev)
Reference Site:	Stillroven Farm Pad Sec.5-T3N-R68W	MD Reference:	WELL @ 5098.0ft (Original Well Elev)
Site Error:	0.0 ft	North Reference:	True
Reference Well:	Stillroven Farm 7	Survey Calculation Method:	Minimum Curvature
Well Error:	0.0 ft	Output errors are at	2.00 sigma
Reference Wellbore	Wellbore #1	Database:	US_EDM
Reference Design:	Plan #2 (6-5-17)	Offset TVD Reference:	Offset Datum

Offset Design													Offset Site Error:	0.0 ft
Survey Program: 0-MWD													Offset Well Error:	0.0 ft
Reference		Offset		Semi Major Axis			Distance							Warning
Measured Depth (ft)	Vertical Depth (ft)	Measured Depth (ft)	Vertical Depth (ft)	Reference (ft)	Offset (ft)	Highside Toolface (°)	Offset Wellbore Centre +N/-S (ft)	+E/-W (ft)	Between Centres (ft)	Between Ellipses (ft)	Minimum Separation (ft)	Separation Factor		
0.0	0.0	0.0	0.0	0.0	0.0	0.08	59.9	0.1	59.9					
100.0	100.0	99.0	99.0	0.1	0.1	0.08	59.9	0.1	59.9	59.7	0.22	267.943		
200.0	200.0	199.0	199.0	0.3	0.3	0.08	59.9	0.1	59.9	59.3	0.67	89.166		
300.0	300.0	299.0	299.0	0.6	0.6	0.08	59.9	0.1	59.9	58.8	1.12	53.428		
400.0	400.0	399.0	399.0	0.8	0.8	0.08	59.9	0.1	59.9	58.4	1.57	38.141		
500.0	500.0	499.0	499.0	1.0	1.0	0.08	59.9	0.1	59.9	57.9	2.02	29.656		
600.0	600.0	599.0	599.0	1.2	1.2	0.08	59.9	0.1	59.9	57.5	2.47	24.259		
700.0	700.0	699.0	699.0	1.5	1.5	0.08	59.9	0.1	59.9	57.0	2.92	20.524		
800.0	800.0	799.0	799.0	1.7	1.7	0.08	59.9	0.1	59.9	56.6	3.37	17.786		
900.0	900.0	899.0	899.0	1.9	1.9	0.08	59.9	0.1	59.9	56.1	3.82	15.692		
1,000.0	1,000.0	999.0	999.0	2.1	2.1	0.08	59.9	0.1	59.9	55.7	4.27	14.039		
1,100.0	1,100.0	1,099.0	1,099.0	2.4	2.4	0.08	59.9	0.1	59.9	55.2	4.72	12.702		
1,200.0	1,200.0	1,199.0	1,199.0	2.6	2.6	0.08	59.9	0.1	59.9	54.8	5.17	11.597 CC, ES		
1,300.0	1,300.0	1,299.0	1,299.0	2.8	2.8	-152.04	59.9	0.1	61.1	55.5	5.59	10.925		
1,400.0	1,399.9	1,398.9	1,398.9	3.0	3.0	-153.65	59.9	0.1	64.6	58.6	5.99	10.777 SF		
1,500.0	1,499.7	1,498.1	1,498.1	3.1	3.2	-154.98	60.4	1.3	70.9	64.5	6.39	11.096		
1,600.0	1,599.3	1,597.1	1,597.0	3.4	3.5	-155.07	61.8	4.8	80.4	73.6	6.79	11.849		
1,700.0	1,698.6	1,695.5	1,695.2	3.6	3.7	-154.28	64.2	10.7	93.1	85.9	7.19	12.941		
1,803.3	1,800.8	1,796.6	1,795.8	3.8	3.9	-152.93	67.6	19.2	109.5	101.9	7.63	14.358		
1,900.0	1,896.3	1,890.8	1,889.5	4.1	4.1	-151.33	71.7	29.2	127.0	118.9	8.07	15.737		
2,000.0	1,995.0	1,989.0	1,986.9	4.4	4.4	-149.78	76.2	40.5	145.4	136.9	8.54	17.019		
2,100.0	2,093.8	2,087.2	2,084.4	4.7	4.6	-148.58	80.8	51.8	163.9	154.9	9.04	18.145		
2,200.0	2,192.6	2,185.5	2,181.9	5.0	4.9	-147.62	85.3	63.0	182.5	173.0	9.54	19.136		
2,300.0	2,291.3	2,283.7	2,279.3	5.3	5.2	-146.84	89.8	74.3	201.1	191.1	10.05	20.010		
2,400.0	2,390.1	2,381.9	2,376.8	5.6	5.4	-146.19	94.4	85.5	219.8	209.2	10.57	20.783		
2,500.0	2,488.8	2,480.1	2,474.3	6.0	5.7	-145.64	98.9	96.8	238.4	227.3	11.11	21.470		
2,600.0	2,587.6	2,578.3	2,571.7	6.3	6.0	-145.17	103.4	108.0	257.1	245.5	11.64	22.083		
2,700.0	2,686.3	2,676.6	2,669.2	6.7	6.3	-144.77	108.0	119.3	275.8	263.6	12.19	22.632		
2,800.0	2,785.1	2,774.8	2,766.7	7.0	6.6	-144.42	112.5	130.5	294.5	281.8	12.74	23.125		
2,900.0	2,883.8	2,873.0	2,864.1	7.4	6.9	-144.10	117.0	141.8	313.2	299.9	13.29	23.570		
3,000.0	2,982.6	2,971.2	2,961.6	7.7	7.1	-143.83	121.6	153.0	332.0	318.1	13.85	23.973		
3,100.0	3,081.4	3,069.4	3,059.1	8.1	7.4	-143.58	126.1	164.3	350.7	336.3	14.41	24.339		
3,200.0	3,180.1	3,167.7	3,156.5	8.4	7.7	-143.36	130.7	175.5	369.4	354.5	14.97	24.673		
3,300.0	3,278.9	3,265.9	3,254.0	8.8	8.0	-143.16	135.2	186.8	388.2	372.6	15.54	24.979		
3,400.0	3,377.6	3,364.1	3,351.5	9.1	8.3	-142.98	139.7	198.0	406.9	390.8	16.11	25.259		
3,500.0	3,476.4	3,462.3	3,448.9	9.5	8.6	-142.81	144.3	209.3	425.7	409.0	16.68	25.517		
3,600.0	3,575.1	3,560.5	3,546.4	9.9	8.9	-142.66	148.8	220.5	444.4	427.2	17.26	25.754		
3,700.0	3,673.9	3,658.8	3,643.9	10.2	9.2	-142.52	153.3	231.8	463.2	445.3	17.83	25.974		
3,800.0	3,772.6	3,757.0	3,741.3	10.6	9.5	-142.39	157.9	243.0	481.9	463.5	18.41	26.178		

Company:	Captiva Energy Partners	Local Co-ordinate Reference:	Well Stillroven Farm 7
Project:	SEC.5-T3N-R68W	TVD Reference:	WELL @ 5098.0ft (Original Well Elev)
Reference Site:	Stillroven Farm Pad Sec.5-T3N-R68W	MD Reference:	WELL @ 5098.0ft (Original Well Elev)
Site Error:	0.0 ft	North Reference:	True
Reference Well:	Stillroven Farm 7	Survey Calculation Method:	Minimum Curvature
Well Error:	0.0 ft	Output errors are at	2.00 sigma
Reference Wellbore	Wellbore #1	Database:	US_EDM
Reference Design:	Plan #2 (6-5-17)	Offset TVD Reference:	Offset Datum

Offset Design													Offset Site Error:	0.0 ft
Survey Program: 0-MWD													Offset Well Error:	0.0 ft
Reference		Offset		Semi Major Axis			Distance							Warning
Measured Depth (ft)	Vertical Depth (ft)	Measured Depth (ft)	Vertical Depth (ft)	Reference (ft)	Offset (ft)	Highside Toolface (°)	Offset Wellbore Centre +N/-S (ft)	+E/-W (ft)	Between Centres (ft)	Between Ellipses (ft)	Minimum Separation (ft)	Separation Factor		
0.0	0.0	0.0	0.0	0.0	0.0	0.11	44.9	0.1	44.9					
100.0	100.0	99.0	99.0	0.1	0.1	0.11	44.9	0.1	44.9	44.7	0.22	200.867		
200.0	200.0	199.0	199.0	0.3	0.3	0.11	44.9	0.1	44.9	44.3	0.67	66.844		
300.0	300.0	299.0	299.0	0.6	0.6	0.11	44.9	0.1	44.9	43.8	1.12	40.053		
400.0	400.0	399.0	399.0	0.8	0.8	0.11	44.9	0.1	44.9	43.4	1.57	28.593		
500.0	500.0	499.0	499.0	1.0	1.0	0.11	44.9	0.1	44.9	42.9	2.02	22.232		
600.0	600.0	599.0	599.0	1.2	1.2	0.11	44.9	0.1	44.9	42.5	2.47	18.186		
700.0	700.0	699.0	699.0	1.5	1.5	0.11	44.9	0.1	44.9	42.0	2.92	15.386		
800.0	800.0	799.0	799.0	1.7	1.7	0.11	44.9	0.1	44.9	41.6	3.37	13.333		
900.0	900.0	899.0	899.0	1.9	1.9	0.11	44.9	0.1	44.9	41.1	3.82	11.764		
1,000.0	1,000.0	999.0	999.0	2.1	2.1	0.11	44.9	0.1	44.9	40.7	4.27	10.525		
1,100.0	1,100.0	1,099.0	1,099.0	2.4	2.4	0.11	44.9	0.1	44.9	40.2	4.72	9.522		
1,200.0	1,200.0	1,199.0	1,199.0	2.6	2.6	0.11	44.9	0.1	44.9	39.8	5.17	8.694 CC, ES		
1,300.0	1,300.0	1,299.0	1,299.0	2.8	2.8	-152.20	44.9	0.1	46.1	40.5	5.59	8.242 SF		
1,400.0	1,399.9	1,398.9	1,398.9	3.0	3.0	-154.29	44.9	0.1	49.6	43.6	5.99	8.276		
1,500.0	1,499.7	1,498.7	1,498.7	3.1	3.3	-157.19	44.9	0.1	55.6	49.2	6.40	8.684		
1,600.0	1,599.3	1,598.3	1,598.3	3.4	3.5	-160.31	44.9	0.1	64.1	57.3	6.81	9.417		
1,700.0	1,698.6	1,697.6	1,697.6	3.6	3.7	-163.28	44.9	0.1	75.3	68.0	7.21	10.433		
1,803.3	1,800.8	1,799.8	1,799.8	3.8	3.9	-165.96	44.9	0.1	89.6	82.0	7.64	11.735		
1,900.0	1,896.3	1,896.3	1,896.3	4.1	4.1	-167.38	44.8	1.3	104.0	95.9	8.04	12.938		
2,000.0	1,995.0	1,996.5	1,996.4	4.4	4.3	-167.34	44.3	5.1	117.9	109.4	8.45	13.956		
2,100.0	2,093.8	2,096.8	2,096.5	4.7	4.5	-166.22	43.6	11.5	130.8	121.9	8.87	14.743		
2,200.0	2,192.6	2,197.3	2,196.6	5.0	4.8	-164.32	42.5	20.6	142.8	133.5	9.31	15.333		
2,300.0	2,291.3	2,296.7	2,295.4	5.3	5.0	-162.08	41.2	31.3	154.4	144.6	9.78	15.794		
2,400.0	2,390.1	2,395.9	2,394.0	5.6	5.2	-160.15	39.9	42.1	166.2	156.0	10.26	16.206		
2,500.0	2,488.8	2,495.0	2,492.5	6.0	5.5	-158.47	38.6	52.9	178.2	167.4	10.75	16.576		
2,600.0	2,587.6	2,594.2	2,591.1	6.3	5.7	-157.00	37.3	63.7	190.3	179.0	11.25	16.907		
2,700.0	2,686.3	2,693.3	2,689.7	6.7	6.0	-155.71	36.0	74.5	202.5	190.7	11.77	17.204		
2,800.0	2,785.1	2,792.5	2,788.2	7.0	6.2	-154.57	34.8	85.3	214.7	202.5	12.29	17.470		
2,900.0	2,883.8	2,891.7	2,886.8	7.4	6.5	-153.55	33.5	96.0	227.1	214.3	12.82	17.709		
3,000.0	2,982.6	2,990.8	2,985.3	7.7	6.7	-152.63	32.2	106.8	239.5	226.2	13.36	17.924		
3,100.0	3,081.4	3,090.0	3,083.9	8.1	7.0	-151.81	30.9	117.6	252.0	238.1	13.91	18.117		
3,200.0	3,180.1	3,189.1	3,182.5	8.4	7.3	-151.06	29.6	128.4	264.6	250.1	14.46	18.292		
3,300.0	3,278.9	3,288.3	3,281.0	8.8	7.5	-150.38	28.3	139.2	277.1	262.1	15.02	18.450		
3,400.0	3,377.6	3,387.4	3,379.6	9.1	7.8	-149.76	27.0	150.0	289.7	274.1	15.58	18.594		
3,500.0	3,476.4	3,486.6	3,478.1	9.5	8.1	-149.19	25.7	160.8	302.4	286.2	16.15	18.725		
3,600.0	3,575.1	3,585.8	3,576.7	9.9	8.4	-148.67	24.5	171.5	315.0	298.3	16.72	18.844		
3,700.0	3,673.9	3,684.9	3,675.2	10.2	8.6	-148.19	23.2	182.3	327.7	310.4	17.29	18.954		
3,800.0	3,772.6	3,784.1	3,773.8	10.6	8.9	-147.74	21.9	193.1	340.4	322.5	17.87	19.054		
3,900.0	3,871.4	3,883.2	3,872.4	11.0	9.2	-147.33	20.6	203.9	353.1	334.7	18.44	19.146		
4,000.0	3,970.2	3,982.4	3,970.9	11.3	9.5	-146.94	19.3	214.7	365.9	346.9	19.03	19.231		
4,100.0	4,068.9	4,081.5	4,069.5	11.7	9.8	-146.58	18.0	225.5	378.6	359.0	19.61	19.310		
4,200.0	4,167.7	4,180.7	4,168.0	12.1	10.1	-146.25	16.7	236.3	391.4	371.2	20.19	19.382		
4,300.0	4,266.4	4,279.8	4,266.6	12.4	10.4	-145.93	15.4	247.0	404.2	383.4	20.78	19.450		
4,400.0	4,365.2	4,379.0	4,365.2	12.8	10.6	-145.64	14.2	257.8	417.0	395.6	21.37	19.512		
4,500.0	4,463.9	4,478.2	4,463.7	13.2	10.9	-145.36	12.9	268.6	429.8	407.8	21.96	19.571		
4,600.0	4,562.7	4,577.3	4,562.3	13.6	11.2	-145.10	11.6	279.4	442.6	420.0	22.55	19.625		
4,700.0	4,661.4	4,676.5	4,660.8	13.9	11.5	-144.85	10.3	290.2	455.4	432.3	23.15	19.676		
4,800.0	4,760.2	4,775.6	4,759.4	14.3	11.8	-144.73	9.1	300.0	468.3	444.6	23.70	19.756		
4,900.0	4,859.0	4,874.6	4,858.2	14.7	12.0	-145.02	8.3	306.6	481.1	456.9	24.18	19.894		
5,000.0	4,957.7	4,973.3	4,956.9	15.1	12.2	-145.69	8.0	309.8	494.1	469.4	24.61	20.075		

CC - Min centre to center distance or convergent point, SF - min separation factor, ES - min ellipse separation

Company:	Captiva Energy Partners	Local Co-ordinate Reference:	Well Stillroven Farm 7
Project:	SEC.5-T3N-R68W	TVD Reference:	WELL @ 5098.0ft (Original Well Elev)
Reference Site:	Stillroven Farm Pad Sec.5-T3N-R68W	MD Reference:	WELL @ 5098.0ft (Original Well Elev)
Site Error:	0.0 ft	North Reference:	True
Reference Well:	Stillroven Farm 7	Survey Calculation Method:	Minimum Curvature
Well Error:	0.0 ft	Output errors are at	2.00 sigma
Reference Wellbore	Wellbore #1	Database:	US_EDM
Reference Design:	Plan #2 (6-5-17)	Offset TVD Reference:	Offset Datum

Offset Design													Offset Site Error:	0.0 ft
Survey Program: 0-MWD													Offset Well Error:	0.0 ft
Reference		Offset		Semi Major Axis			Distance							Warning
Measured Depth (ft)	Vertical Depth (ft)	Measured Depth (ft)	Vertical Depth (ft)	Reference (ft)	Offset (ft)	Highside Toolface (°)	Offset Wellbore Centre +N/-S (ft)	+E/-W (ft)	Between Centres (ft)	Between Ellipses (ft)	Minimum Separation (ft)	Separation Factor		
0.0	0.0	0.0	0.0	0.0	0.0	0.27	29.9	0.1	29.9					
100.0	100.0	100.0	100.0	0.1	0.1	0.27	29.9	0.1	29.9	29.7	0.22	133.052		
200.0	200.0	200.0	200.0	0.3	0.3	0.27	29.9	0.1	29.9	29.2	0.67	44.351		
300.0	300.0	300.0	300.0	0.6	0.6	0.27	29.9	0.1	29.9	28.8	1.12	26.610		
400.0	400.0	400.0	400.0	0.8	0.8	0.27	29.9	0.1	29.9	28.3	1.57	19.007		
500.0	500.0	500.0	500.0	1.0	1.0	0.27	29.9	0.1	29.9	27.9	2.02	14.784		
600.0	600.0	600.0	600.0	1.2	1.2	0.27	29.9	0.1	29.9	27.4	2.47	12.096		
700.0	700.0	700.0	700.0	1.5	1.5	0.27	29.9	0.1	29.9	27.0	2.92	10.235		
800.0	800.0	800.0	800.0	1.7	1.7	0.27	29.9	0.1	29.9	26.5	3.37	8.870		
900.0	900.0	900.0	900.0	1.9	1.9	0.27	29.9	0.1	29.9	26.1	3.82	7.827		
1,000.0	1,000.0	1,000.0	1,000.0	2.1	2.1	0.27	29.9	0.1	29.9	25.6	4.27	7.003		
1,100.0	1,100.0	1,100.0	1,100.0	2.4	2.4	0.27	29.9	0.1	29.9	25.2	4.72	6.336		
1,200.0	1,200.0	1,200.0	1,200.0	2.6	2.6	0.27	29.9	0.1	29.9	24.7	5.17	5.785 CC, ES		
1,300.0	1,300.0	1,300.0	1,300.0	2.8	2.8	-152.42	29.9	0.1	31.1	25.5	5.59	5.554		
1,400.0	1,399.9	1,399.9	1,399.9	3.0	3.0	-155.41	29.9	0.1	34.6	28.6	5.99	5.771		
1,500.0	1,499.7	1,499.7	1,499.7	3.1	3.3	-159.22	29.9	0.1	40.6	34.2	6.40	6.349		
1,600.0	1,599.3	1,599.3	1,599.3	3.4	3.5	-162.96	29.9	0.1	49.3	42.5	6.81	7.242		
1,700.0	1,698.6	1,700.0	1,700.0	3.6	3.7	-165.72	28.9	0.9	59.4	52.3	7.19	8.267		
1,803.3	1,800.8	1,804.4	1,804.3	3.8	3.9	-167.37	25.6	3.5	70.1	62.6	7.57	9.270		
1,900.0	1,896.3	1,902.4	1,902.1	4.1	4.1	-168.06	20.4	7.5	79.1	71.1	7.95	9.954		
2,000.0	1,995.0	2,004.3	2,003.5	4.4	4.3	-168.01	13.0	13.2	85.9	77.6	8.35	10.287		
2,100.0	2,093.8	2,106.4	2,104.9	4.7	4.5	-167.33	3.4	20.7	90.3	81.5	8.77	10.288		
2,200.0	2,192.6	2,206.4	2,204.0	5.0	4.7	-166.39	-7.1	28.8	93.3	84.1	9.21	10.133		
2,300.0	2,291.3	2,306.3	2,303.1	5.3	5.0	-165.51	-17.7	37.0	96.3	86.7	9.65	9.983		
2,400.0	2,390.1	2,406.3	2,402.1	5.6	5.2	-164.68	-28.2	45.1	99.4	89.3	10.10	9.838		
2,500.0	2,488.8	2,506.2	2,501.2	6.0	5.5	-163.91	-38.7	53.3	102.5	91.9	10.56	9.699		
2,600.0	2,587.6	2,606.2	2,600.2	6.3	5.8	-163.17	-49.3	61.4	105.6	94.5	11.04	9.566		
2,700.0	2,686.3	2,706.1	2,699.3	6.7	6.0	-162.48	-59.8	69.6	108.7	97.2	11.52	9.438		
2,800.0	2,785.1	2,806.0	2,798.3	7.0	6.3	-161.83	-70.3	77.8	111.8	99.8	12.00	9.316		
2,900.0	2,883.8	2,906.0	2,897.4	7.4	6.6	-161.22	-80.9	85.9	115.0	102.5	12.50	9.199		
3,000.0	2,982.6	3,005.9	2,996.4	7.7	6.9	-160.64	-91.4	94.1	118.1	105.1	13.00	9.088		
3,100.0	3,081.4	3,105.9	3,095.5	8.1	7.2	-160.08	-101.9	102.2	121.3	107.8	13.50	8.982		
3,200.0	3,180.1	3,205.8	3,194.5	8.4	7.5	-159.56	-112.5	110.4	124.5	110.5	14.02	8.881		
3,300.0	3,278.9	3,305.8	3,293.6	8.8	7.8	-159.06	-123.0	118.5	127.7	113.1	14.53	8.784		
3,400.0	3,377.6	3,405.7	3,392.6	9.1	8.1	-158.59	-133.5	126.7	130.9	115.8	15.06	8.692		
3,500.0	3,476.4	3,505.7	3,491.7	9.5	8.5	-158.14	-144.0	134.9	134.1	118.5	15.58	8.605		
3,600.0	3,575.1	3,605.6	3,590.7	9.9	8.8	-157.71	-154.6	143.0	137.3	121.2	16.11	8.521		
3,700.0	3,673.9	3,705.5	3,689.8	10.2	9.1	-157.30	-165.1	151.2	140.5	123.9	16.65	8.441		
3,800.0	3,772.6	3,805.5	3,788.8	10.6	9.4	-156.90	-175.6	159.3	143.7	126.6	17.18	8.365		
3,900.0	3,871.4	3,905.4	3,887.9	11.0	9.7	-156.53	-186.2	167.5	147.0	129.3	17.73	8.292		
4,000.0	3,970.2	4,005.4	3,986.9	11.3	10.1	-156.17	-196.7	175.6	150.2	132.0	18.27	8.223		
4,100.0	4,068.9	4,105.3	4,086.0	11.7	10.4	-155.83	-207.2	183.8	153.5	134.7	18.82	8.156		
4,200.0	4,167.7	4,205.3	4,185.0	12.1	10.7	-155.50	-217.8	191.9	156.7	137.4	19.37	8.092		
4,300.0	4,266.4	4,305.2	4,284.1	12.4	11.0	-155.18	-228.3	200.1	160.0	140.1	19.92	8.031		
4,400.0	4,365.2	4,405.1	4,383.1	12.8	11.4	-154.88	-238.8	208.3	163.3	142.8	20.48	7.973		
4,500.0	4,463.9	4,505.1	4,482.2	13.2	11.7	-154.59	-249.4	216.4	166.5	145.5	21.03	7.917		
4,600.0	4,562.7	4,605.0	4,581.2	13.6	12.0	-154.31	-259.9	224.6	169.8	148.2	21.59	7.863		
4,700.0	4,661.4	4,705.0	4,680.3	13.9	12.3	-154.04	-270.4	232.7	173.1	150.9	22.16	7.812		
4,800.0	4,760.2	4,804.9	4,779.4	14.3	12.7	-153.78	-281.0	240.9	176.4	153.6	22.72	7.762		
4,900.0	4,859.0	4,904.9	4,878.4	14.7	13.0	-153.53	-291.5	249.0	179.6	156.4	23.28	7.715		
5,000.0	4,957.7	5,004.8	4,977.5	15.1	13.3	-153.29	-302.0	257.2	182.9	159.1	23.85	7.669		
5,100.0	5,056.5	5,104.7	5,076.5	15.4	13.7	-153.06	-312.6	265.4	186.2	161.8	24.42	7.625		

CC - Min centre to center distance or convergent point, SF - min separation factor, ES - min ellipse separation

Company:	Captiva Energy Partners	Local Co-ordinate Reference:	Well Stillroven Farm 7
Project:	SEC.5-T3N-R68W	TVD Reference:	WELL @ 5098.0ft (Original Well Elev)
Reference Site:	Stillroven Farm Pad Sec.5-T3N-R68W	MD Reference:	WELL @ 5098.0ft (Original Well Elev)
Site Error:	0.0 ft	North Reference:	True
Reference Well:	Stillroven Farm 7	Survey Calculation Method:	Minimum Curvature
Well Error:	0.0 ft	Output errors are at	2.00 sigma
Reference Wellbore	Wellbore #1	Database:	US_EDM
Reference Design:	Plan #2 (6-5-17)	Offset TVD Reference:	Offset Datum

Offset Design		Stillroven Farm Pad Sec.5-T3N-R68W - Stillroven Farm 5 - Wellbore #1 - Plan #2 (6-5-17)											Offset Site Error:		0.0 ft
Survey Program: 0-MWD													Offset Well Error:		0.0 ft
Reference		Offset		Semi Major Axis			Distance							Warning	
Measured Depth (ft)	Vertical Depth (ft)	Measured Depth (ft)	Vertical Depth (ft)	Reference (ft)	Offset (ft)	Highside Toolface (°)	Offset Wellbore Centre +N/-S (ft)	+E/-W (ft)	Between Centres (ft)	Between Ellipses (ft)	Minimum Separation (ft)	Separation Factor			
5,200.0	5,155.2	5,204.7	5,175.6	15.8	14.0	-152.83	-323.1	273.5	189.5	164.5	24.99	7.583			
5,300.0	5,254.0	5,304.6	5,274.6	16.2	14.3	-152.62	-333.6	281.7	192.8	167.2	25.56	7.542			
5,396.6	5,349.4	5,401.2	5,370.3	16.5	14.7	-152.42	-343.8	289.6	196.0	169.9	26.12	7.504			
5,400.0	5,352.7	5,404.6	5,373.7	16.6	14.7	-152.41	-344.2	289.8	196.1	170.0	26.14	7.503			
5,500.0	5,451.8	5,500.0	5,468.3	16.8	15.0	-152.08	-353.9	297.3	198.2	171.5	26.67	7.429			
5,600.0	5,551.2	5,596.4	5,564.2	17.0	15.2	-151.79	-361.4	303.2	199.5	172.4	27.13	7.354			
5,700.0	5,651.0	5,691.2	5,658.8	17.2	15.4	-151.60	-366.3	307.0	200.4	172.9	27.52	7.282			
5,800.0	5,750.9	5,785.9	5,753.5	17.4	15.6	-151.51	-368.8	308.9	200.9	173.0	27.85	7.213			
5,849.1	5,800.0	5,832.4	5,800.0	17.5	15.6	0.04	-369.1	309.1	200.9	169.8	31.07	6.466			
5,900.0	5,850.9	5,883.3	5,850.9	17.5	15.7	0.04	-369.1	309.1	200.9	169.7	31.24	6.432			
6,000.0	5,950.9	5,983.3	5,950.9	17.7	15.9	0.04	-369.1	309.1	200.9	169.4	31.54	6.369			
6,100.0	6,050.9	6,083.3	6,050.9	17.8	16.0	0.04	-369.1	309.1	200.9	169.0	31.86	6.307			
6,200.0	6,150.9	6,183.3	6,150.9	18.0	16.2	0.04	-369.1	309.1	200.9	168.7	32.17	6.245			
6,300.0	6,250.9	6,283.3	6,250.9	18.1	16.4	0.04	-369.1	309.1	200.9	168.4	32.49	6.184			
6,400.0	6,350.9	6,383.3	6,350.9	18.2	16.5	0.04	-369.1	309.1	200.9	168.1	32.81	6.123			
6,500.0	6,450.9	6,483.3	6,450.9	18.4	16.7	0.04	-369.1	309.1	200.9	167.8	33.13	6.064			
6,600.0	6,550.9	6,583.3	6,550.9	18.5	16.8	0.04	-369.1	309.1	200.9	167.4	33.46	6.004			
6,700.0	6,650.9	6,683.3	6,650.9	18.7	17.0	0.04	-369.1	309.1	200.9	167.1	33.79	5.946			
6,800.0	6,750.9	6,783.3	6,750.9	18.8	17.2	0.04	-369.1	309.1	200.9	166.8	34.12	5.888			
6,900.0	6,850.9	6,883.7	6,851.2	19.0	17.3	-0.78	-369.2	306.2	200.8	166.3	34.53	5.816			
6,920.5	6,871.4	6,904.1	6,871.4	19.0	17.4	-1.52	-369.2	303.7	200.8	166.2	34.67	5.793			
6,991.0	6,941.8	6,972.0	6,937.7	19.1	17.4	-5.59	-369.6	289.4	201.4	166.1	35.25	5.712			
7,000.0	6,950.9	6,980.5	6,945.8	19.1	17.4	85.15	-369.7	287.0	201.6	170.2	31.40	6.419			
7,050.0	7,000.8	7,026.4	6,989.2	19.2	17.4	81.47	-370.1	271.7	203.2	172.0	31.16	6.521			
7,100.0	7,050.1	7,071.4	7,030.0	19.2	17.4	77.96	-370.6	253.0	205.6	174.7	30.91	6.649			
7,150.0	7,098.3	7,115.5	7,068.4	19.3	17.4	74.65	-371.2	231.3	208.6	177.9	30.67	6.801			
7,200.0	7,145.1	7,158.8	7,104.1	19.3	17.4	71.56	-371.8	206.8	212.1	181.7	30.41	6.974			
7,250.0	7,189.9	7,200.0	7,136.0	19.3	17.4	68.80	-372.5	180.8	216.0	185.8	30.13	7.169			
7,300.0	7,232.4	7,243.2	7,167.2	19.3	17.4	66.16	-373.3	150.8	220.0	190.2	29.80	7.384			
7,350.0	7,272.1	7,284.6	7,194.5	19.2	17.3	63.85	-374.1	119.8	224.1	194.7	29.43	7.615			
7,400.0	7,308.6	7,325.5	7,219.0	19.2	17.3	61.81	-375.0	87.1	228.2	199.1	29.05	7.855			
7,450.0	7,341.6	7,366.0	7,240.5	19.2	17.3	60.02	-375.9	52.9	232.0	203.3	28.66	8.093			
7,500.0	7,370.8	7,406.0	7,259.2	19.1	17.3	58.49	-376.8	17.4	235.5	207.2	28.33	8.314			
7,550.0	7,395.9	7,450.0	7,276.4	19.1	17.3	57.11	-377.9	-23.0	238.7	210.6	28.09	8.497			
7,600.0	7,416.7	7,485.4	7,287.6	19.1	17.3	56.16	-378.8	-56.6	241.3	213.3	28.01	8.615			
7,650.0	7,432.9	7,524.7	7,297.4	19.1	17.6	55.34	-379.8	-94.6	243.5	215.4	28.13	8.655			
7,700.0	7,444.4	7,563.9	7,304.2	19.0	18.0	54.75	-380.8	-133.2	245.1	216.6	28.47	8.609			
7,750.0	7,451.1	7,600.0	7,307.9	19.1	18.5	54.40	-381.8	-169.1	246.1	217.0	29.04	8.473			
7,793.9	7,452.0	7,638.1	7,308.0	19.6	19.0	54.24	-382.7	-206.2	246.4	216.6	29.83	8.260			
7,794.9	7,452.0	7,639.1	7,308.0	19.6	19.0	54.24	-382.8	-207.1	246.4	216.6	29.85	8.254			
7,800.0	7,452.0	7,644.0	7,308.0	19.6	19.1	54.24	-382.9	-212.1	246.4	216.4	29.98	8.220			
7,834.2	7,452.0	7,677.1	7,308.0	20.1	19.6	54.23	-383.6	-245.2	246.4	215.6	30.80	7.999			
7,852.9	7,452.0	7,695.6	7,308.0	20.4	19.9	54.23	-384.0	-263.6	246.4	215.1	31.29	7.874			
7,900.0	7,452.0	7,742.6	7,308.0	21.2	20.7	54.23	-384.8	-310.7	246.4	213.8	32.59	7.560			
8,000.0	7,452.0	7,842.6	7,308.0	23.0	22.6	54.23	-386.6	-410.7	246.4	210.8	35.61	6.919			
8,100.0	7,452.0	7,942.6	7,308.0	25.0	24.6	54.23	-388.4	-510.6	246.4	207.4	38.94	6.326			
8,200.0	7,452.0	8,042.6	7,308.0	27.1	26.8	54.23	-390.2	-610.6	246.4	203.9	42.53	5.794			
8,300.0	7,452.0	8,142.6	7,308.0	29.3	29.0	54.23	-391.9	-710.6	246.4	200.1	46.30	5.322			
8,400.0	7,452.0	8,242.6	7,308.0	31.7	31.4	54.23	-393.7	-810.6	246.4	196.2	50.21	4.907			
8,500.0	7,452.0	8,342.6	7,308.0	34.1	33.8	54.23	-395.5	-910.6	246.4	192.1	54.24	4.542			
8,600.0	7,452.0	8,442.6	7,308.0	36.5	36.3	54.23	-397.3	-1,010.6	246.4	188.0	58.36	4.222			
8,700.0	7,452.0	8,542.6	7,308.0	39.0	38.8	54.24	-399.1	-1,110.6	246.4	183.8	62.55	3.939			

CC - Min centre to center distance or convergent point, SF - min separation factor, ES - min ellipse separation

Company:	Captiva Energy Partners	Local Co-ordinate Reference:	Well Stillroven Farm 7
Project:	SEC.5-T3N-R68W	TVD Reference:	WELL @ 5098.0ft (Original Well Elev)
Reference Site:	Stillroven Farm Pad Sec.5-T3N-R68W	MD Reference:	WELL @ 5098.0ft (Original Well Elev)
Site Error:	0.0 ft	North Reference:	True
Reference Well:	Stillroven Farm 7	Survey Calculation Method:	Minimum Curvature
Well Error:	0.0 ft	Output errors are at	2.00 sigma
Reference Wellbore	Wellbore #1	Database:	US_EDM
Reference Design:	Plan #2 (6-5-17)	Offset TVD Reference:	Offset Datum

Offset Design		Stillroven Farm Pad Sec.5-T3N-R68W - Stillroven Farm 5 - Wellbore #1 - Plan #2 (6-5-17)											Offset Site Error: 0.0 ft	
Survey Program: 0-MWD													Offset Well Error: 0.0 ft	
Reference		Offset		Semi Major Axis			Distance							Warning
Measured Depth (ft)	Vertical Depth (ft)	Measured Depth (ft)	Vertical Depth (ft)	Reference (ft)	Offset (ft)	Highside Toolface (°)	Offset Wellbore Centre +N/-S (ft)	+E/-W (ft)	Between Centres (ft)	Between Ellipses (ft)	Minimum Separation (ft)	Separation Factor		
8,800.0	7,452.0	8,642.6	7,308.0	41.6	41.3	54.24	-400.9	-1,210.5	246.4	179.6	66.81	3.688		
8,900.0	7,452.0	8,742.6	7,308.0	44.1	43.9	54.24	-402.7	-1,310.5	246.4	175.3	71.10	3.465		
9,000.0	7,452.0	8,842.6	7,308.0	46.7	46.5	54.24	-404.5	-1,410.5	246.4	170.9	75.44	3.266		
9,100.0	7,452.0	8,942.6	7,308.0	49.3	49.2	54.24	-406.3	-1,510.5	246.4	166.6	79.82	3.087		
9,200.0	7,452.0	9,042.6	7,308.0	52.0	51.8	54.24	-408.0	-1,610.5	246.4	162.2	84.22	2.925		
9,300.0	7,452.0	9,142.6	7,308.0	54.6	54.5	54.24	-409.8	-1,710.5	246.4	157.7	88.65	2.779		
9,400.0	7,452.0	9,242.6	7,308.0	57.3	57.1	54.24	-411.6	-1,810.4	246.4	153.3	93.09	2.647		
9,500.0	7,452.0	9,342.6	7,308.0	60.0	59.8	54.24	-413.4	-1,910.4	246.4	148.8	97.56	2.526		
9,600.0	7,452.0	9,442.6	7,308.0	62.7	62.5	54.24	-415.2	-2,010.4	246.4	144.4	102.04	2.415		
9,700.0	7,452.0	9,542.6	7,308.0	65.4	65.2	54.24	-417.0	-2,110.4	246.4	139.9	106.53	2.313		
9,800.0	7,452.0	9,642.6	7,308.0	68.1	68.0	54.24	-418.8	-2,210.4	246.4	135.4	111.03	2.219		
9,900.0	7,452.0	9,742.6	7,308.0	70.8	70.7	54.24	-420.6	-2,310.4	246.4	130.8	115.55	2.132		
10,000.0	7,452.0	9,842.6	7,308.0	73.5	73.4	54.24	-422.3	-2,410.3	246.4	126.3	120.07	2.052		
10,100.0	7,452.0	9,942.6	7,308.0	76.2	76.1	54.24	-424.1	-2,510.3	246.4	121.8	124.61	1.977		
10,200.0	7,452.0	10,042.6	7,308.0	79.0	78.9	54.24	-425.9	-2,610.3	246.4	117.2	129.15	1.908		
10,300.0	7,452.0	10,142.6	7,308.0	81.7	81.6	54.24	-427.7	-2,710.3	246.4	112.7	133.70	1.843		
10,400.0	7,452.0	10,242.6	7,308.0	84.4	84.4	54.24	-429.5	-2,810.3	246.4	108.1	138.25	1.782		
10,500.0	7,452.0	10,342.6	7,308.0	87.2	87.1	54.24	-431.3	-2,910.3	246.4	103.6	142.81	1.725		
10,600.0	7,452.0	10,442.6	7,308.0	89.9	89.9	54.24	-433.1	-3,010.2	246.4	99.0	147.37	1.672		
10,700.0	7,452.0	10,542.6	7,308.0	92.7	92.6	54.24	-434.9	-3,110.2	246.4	94.5	151.94	1.622		
10,800.0	7,452.0	10,642.6	7,308.0	95.4	95.4	54.24	-436.7	-3,210.2	246.4	89.9	156.51	1.574		
10,900.0	7,452.0	10,742.6	7,308.0	98.2	98.1	54.24	-438.4	-3,310.2	246.4	85.3	161.09	1.530		
11,000.0	7,452.0	10,842.6	7,308.0	101.0	100.9	54.24	-440.2	-3,410.2	246.4	80.7	165.67	1.487 Level 3		
11,100.0	7,452.0	10,942.6	7,308.0	103.7	103.7	54.24	-442.0	-3,510.2	246.4	76.2	170.25	1.447 Level 3		
11,200.0	7,452.0	11,042.6	7,308.0	106.5	106.4	54.24	-443.8	-3,610.2	246.4	71.6	174.84	1.409 Level 3		
11,300.0	7,452.0	11,142.6	7,308.0	109.3	109.2	54.24	-445.6	-3,710.1	246.4	67.0	179.42	1.373 Level 3		
11,400.0	7,452.0	11,242.6	7,308.0	112.0	112.0	54.24	-447.4	-3,810.1	246.4	62.4	184.01	1.339 Level 3		
11,500.0	7,452.0	11,342.6	7,308.0	114.8	114.8	54.24	-449.2	-3,910.1	246.4	57.8	188.61	1.306 Level 3		
11,600.0	7,452.0	11,442.6	7,308.0	117.6	117.5	54.24	-451.0	-4,010.1	246.4	53.2	193.20	1.275 Level 3		
11,700.0	7,452.0	11,542.6	7,308.0	120.3	120.3	54.24	-452.7	-4,110.1	246.4	48.6	197.80	1.246 Level 2		
11,800.0	7,452.0	11,642.6	7,308.0	123.1	123.1	54.24	-454.5	-4,210.1	246.4	44.0	202.40	1.217 Level 2		
11,900.0	7,452.0	11,742.6	7,308.0	125.9	125.9	54.24	-456.3	-4,310.0	246.4	39.4	207.00	1.190 Level 2		
12,000.0	7,452.0	11,842.6	7,308.0	128.7	128.7	54.24	-458.1	-4,410.0	246.4	34.8	211.60	1.164 Level 2		
12,056.9	7,452.0	11,899.6	7,308.0	130.2	130.2	54.24	-459.1	-4,466.9	246.4	32.2	214.22	1.150 Level 2		
12,095.0	7,452.0	11,935.2	7,308.0	131.3	131.2	54.24	-459.8	-4,502.6	246.4	30.5	215.92	1.141 Level 2, SF		

Company:	Captiva Energy Partners	Local Co-ordinate Reference:	Well Stillroven Farm 7
Project:	SEC.5-T3N-R68W	TVD Reference:	WELL @ 5098.0ft (Original Well Elev)
Reference Site:	Stillroven Farm Pad Sec.5-T3N-R68W	MD Reference:	WELL @ 5098.0ft (Original Well Elev)
Site Error:	0.0 ft	North Reference:	True
Reference Well:	Stillroven Farm 7	Survey Calculation Method:	Minimum Curvature
Well Error:	0.0 ft	Output errors are at	2.00 sigma
Reference Wellbore	Wellbore #1	Database:	US_EDM
Reference Design:	Plan #2 (6-5-17)	Offset TVD Reference:	Offset Datum

Offset Design													Offset Site Error:	0.0 ft
Survey Program: 0-MWD													Offset Well Error:	0.0 ft
Reference		Offset		Semi Major Axis			Distance						Warning	
Measured Depth (ft)	Vertical Depth (ft)	Measured Depth (ft)	Vertical Depth (ft)	Reference (ft)	Offset (ft)	Highside Toolface (°)	Offset Wellbore Centre +N/-S (ft)	+E/-W (ft)	Between Centres (ft)	Between Ellipses (ft)	Minimum Separation (ft)	Separation Factor		
0.0	0.0	0.0	0.0	0.0	0.0	0.11	14.9	0.0	14.9	14.9	0.00	N/A		
100.0	100.0	100.0	100.0	0.1	0.1	0.11	14.9	0.0	14.9	14.7	0.22	66.291		
200.0	200.0	200.0	200.0	0.3	0.3	0.11	14.9	0.0	14.9	14.2	0.67	22.097		
300.0	300.0	300.0	300.0	0.6	0.6	0.11	14.9	0.0	14.9	13.8	1.12	13.258		
400.0	400.0	400.0	400.0	0.8	0.8	0.11	14.9	0.0	14.9	13.3	1.57	9.470		
500.0	500.0	500.0	500.0	1.0	1.0	0.11	14.9	0.0	14.9	12.9	2.02	7.366		
600.0	600.0	600.0	600.0	1.2	1.2	0.11	14.9	0.0	14.9	12.4	2.47	6.026		
700.0	700.0	700.0	700.0	1.5	1.5	0.11	14.9	0.0	14.9	12.0	2.92	5.099		
800.0	800.0	800.0	800.0	1.7	1.7	0.11	14.9	0.0	14.9	11.5	3.37	4.419		
900.0	900.0	900.0	900.0	1.9	1.9	0.11	14.9	0.0	14.9	11.1	3.82	3.899		
1,000.0	1,000.0	1,000.0	1,000.0	2.1	2.1	0.11	14.9	0.0	14.9	10.6	4.27	3.489		
1,100.0	1,100.0	1,100.0	1,100.0	2.4	2.4	0.11	14.9	0.0	14.9	10.2	4.72	3.157		
1,200.0	1,200.0	1,200.0	1,200.0	2.6	2.6	0.11	14.9	0.0	14.9	9.7	5.17	2.882 CC, ES		
1,300.0	1,300.0	1,300.0	1,300.0	2.8	2.8	-153.66	14.9	0.0	16.1	10.5	5.59	2.872 SF		
1,400.0	1,399.9	1,399.9	1,399.9	3.0	3.0	-158.72	14.9	0.0	19.7	13.7	5.99	3.280		
1,500.0	1,499.7	1,500.3	1,500.3	3.1	3.2	-162.91	13.8	0.7	24.6	18.3	6.37	3.867		
1,600.0	1,599.3	1,600.8	1,600.7	3.4	3.4	-165.28	10.5	2.9	29.8	23.0	6.73	4.421		
1,700.0	1,698.6	1,701.5	1,701.2	3.6	3.6	-166.61	4.9	6.5	35.0	27.9	7.10	4.923		
1,803.3	1,800.8	1,805.6	1,804.9	3.8	3.8	-167.30	-3.1	11.8	40.4	32.9	7.49	5.390		
1,900.0	1,896.3	1,903.3	1,901.8	4.1	4.0	-167.21	-12.8	18.1	44.3	36.4	7.89	5.617		
2,000.0	1,995.0	2,004.2	2,001.7	4.4	4.3	-166.18	-25.0	26.0	45.9	37.6	8.31	5.527		
2,100.0	2,093.8	2,104.1	2,100.5	4.7	4.5	-164.90	-37.7	34.3	46.9	38.1	8.75	5.354		
2,200.0	2,192.6	2,204.1	2,199.3	5.0	4.8	-163.68	-50.4	42.6	47.8	38.6	9.20	5.193		
2,300.0	2,291.3	2,304.1	2,298.2	5.3	5.1	-162.51	-63.1	50.9	48.7	39.1	9.67	5.042		
2,400.0	2,390.1	2,404.1	2,397.0	5.6	5.4	-161.38	-75.8	59.1	49.7	39.6	10.14	4.902		
2,500.0	2,488.8	2,504.1	2,495.8	6.0	5.7	-160.29	-88.5	67.4	50.7	40.1	10.63	4.770		
2,600.0	2,587.6	2,604.1	2,594.7	6.3	6.0	-159.25	-101.1	75.7	51.7	40.6	11.13	4.647		
2,700.0	2,686.3	2,704.1	2,693.5	6.7	6.3	-158.25	-113.8	84.0	52.8	41.1	11.64	4.532		
2,800.0	2,785.1	2,804.1	2,792.3	7.0	6.7	-157.29	-126.5	92.2	53.8	41.7	12.16	4.424		
2,900.0	2,883.8	2,904.1	2,891.2	7.4	7.0	-156.36	-139.2	100.5	54.9	42.2	12.69	4.323		
3,000.0	2,982.6	3,004.1	2,990.0	7.7	7.3	-155.47	-151.9	108.8	56.0	42.7	13.23	4.228		
3,100.0	3,081.4	3,104.1	3,088.8	8.1	7.7	-154.61	-164.6	117.1	57.0	43.3	13.78	4.139		
3,200.0	3,180.1	3,204.0	3,187.7	8.4	8.0	-153.79	-177.3	125.3	58.1	43.8	14.34	4.055		
3,300.0	3,278.9	3,304.0	3,286.5	8.8	8.3	-152.99	-190.0	133.6	59.2	44.3	14.90	3.976		
3,400.0	3,377.6	3,404.0	3,385.4	9.1	8.7	-152.23	-202.7	141.9	60.4	44.9	15.47	3.902		
3,500.0	3,476.4	3,504.0	3,484.2	9.5	9.0	-151.49	-215.4	150.2	61.5	45.5	16.05	3.832		
3,600.0	3,575.1	3,604.0	3,583.0	9.9	9.4	-150.78	-228.1	158.4	62.6	46.0	16.63	3.766		
3,700.0	3,673.9	3,704.0	3,681.9	10.2	9.7	-150.10	-240.8	166.7	63.8	46.6	17.23	3.704		
3,800.0	3,772.6	3,804.0	3,780.7	10.6	10.1	-149.44	-253.5	175.0	65.0	47.1	17.82	3.645		
3,900.0	3,871.4	3,904.0	3,879.5	11.0	10.4	-148.80	-266.2	183.3	66.1	47.7	18.42	3.589		
4,000.0	3,970.2	4,004.0	3,978.4	11.3	10.8	-148.19	-278.9	191.5	67.3	48.3	19.03	3.537		
4,100.0	4,068.9	4,104.0	4,077.2	11.7	11.2	-147.59	-291.6	199.8	68.5	48.8	19.64	3.487		
4,200.0	4,167.7	4,203.9	4,176.0	12.1	11.5	-147.02	-304.3	208.1	69.7	49.4	20.26	3.439		
4,300.0	4,266.4	4,303.9	4,274.9	12.4	11.9	-146.46	-316.9	216.4	70.9	50.0	20.88	3.394		
4,400.0	4,365.2	4,403.9	4,373.7	12.8	12.2	-145.93	-329.6	224.6	72.1	50.6	21.51	3.352		
4,500.0	4,463.9	4,503.9	4,472.5	13.2	12.6	-145.41	-342.3	232.9	73.3	51.2	22.14	3.311		
4,600.0	4,562.7	4,603.9	4,571.4	13.6	12.9	-144.91	-355.0	241.2	74.5	51.7	22.77	3.272		
4,700.0	4,661.4	4,703.9	4,670.2	13.9	13.3	-144.43	-367.7	249.5	75.7	52.3	23.41	3.236		
4,800.0	4,760.2	4,803.9	4,769.0	14.3	13.7	-143.96	-380.4	257.7	77.0	52.9	24.05	3.200		
4,900.0	4,859.0	4,903.9	4,867.9	14.7	14.0	-143.50	-393.1	266.0	78.2	53.5	24.69	3.167		
5,000.0	4,957.7	5,003.9	4,966.7	15.1	14.4	-143.06	-405.8	274.3	79.4	54.1	25.34	3.135		
5,100.0	5,056.5	5,103.9	5,065.6	15.4	14.8	-142.63	-418.5	282.6	80.7	54.7	25.99	3.105		

CC - Min centre to center distance or convergent point, SF - min separation factor, ES - min ellipse separation

Company:	Captiva Energy Partners	Local Co-ordinate Reference:	Well Stillroven Farm 7
Project:	SEC.5-T3N-R68W	TVD Reference:	WELL @ 5098.0ft (Original Well Elev)
Reference Site:	Stillroven Farm Pad Sec.5-T3N-R68W	MD Reference:	WELL @ 5098.0ft (Original Well Elev)
Site Error:	0.0 ft	North Reference:	True
Reference Well:	Stillroven Farm 7	Survey Calculation Method:	Minimum Curvature
Well Error:	0.0 ft	Output errors are at	2.00 sigma
Reference Wellbore	Wellbore #1	Database:	US_EDM
Reference Design:	Plan #2 (6-5-17)	Offset TVD Reference:	Offset Datum

Offset Design													Offset Site Error:	0.0 ft
Survey Program: 0-MWD													Offset Well Error:	0.0 ft
Reference		Offset		Semi Major Axis			Distance							Warning
Measured Depth (ft)	Vertical Depth (ft)	Measured Depth (ft)	Vertical Depth (ft)	Reference (ft)	Offset (ft)	Highside Toolface (°)	Offset Wellbore Centre +N/-S (ft)	+E/-W (ft)	Between Centres (ft)	Between Ellipses (ft)	Minimum Separation (ft)	Separation Factor		
5,200.0	5,155.2	5,203.9	5,164.4	15.8	15.1	-142.22	-431.2	290.8	81.9	55.3	26.64	3.075		
5,300.0	5,254.0	5,301.8	5,261.4	16.2	15.4	-142.58	-442.3	298.1	84.4	57.3	27.15	3.109		
5,396.6	5,349.4	5,396.1	5,355.2	16.5	15.6	-144.25	-450.3	303.3	89.2	61.8	27.41	3.256		
5,400.0	5,352.7	5,400.0	5,359.1	16.6	15.6	-144.35	-450.6	303.5	89.5	62.0	27.42	3.263		
5,500.0	5,451.8	5,496.7	5,455.6	16.8	15.8	-146.60	-456.0	307.0	95.7	68.2	27.55	3.474		
5,600.0	5,551.2	5,593.7	5,552.6	17.0	16.0	-148.68	-458.8	308.8	101.8	74.2	27.66	3.683		
5,700.0	5,651.0	5,692.1	5,651.0	17.2	16.1	-150.50	-459.1	309.0	107.5	79.7	27.76	3.872		
5,800.0	5,750.9	5,792.1	5,750.9	17.4	16.3	-151.42	-459.1	309.0	110.5	82.6	27.95	3.954		
5,849.1	5,800.0	5,841.2	5,800.0	17.5	16.4	0.01	-459.1	309.0	110.9	79.0	31.85	3.482		
5,900.0	5,850.9	5,892.0	5,850.9	17.5	16.4	0.01	-459.1	309.0	110.9	78.9	32.01	3.465		
6,000.0	5,950.9	5,992.0	5,950.9	17.7	16.6	0.01	-459.1	309.0	110.9	78.6	32.31	3.433		
6,100.0	6,050.9	6,092.0	6,050.9	17.8	16.7	0.01	-459.1	309.0	110.9	78.3	32.61	3.401		
6,200.0	6,150.9	6,192.0	6,150.9	18.0	16.9	0.01	-459.1	309.0	110.9	78.0	32.91	3.369		
6,300.0	6,250.9	6,292.0	6,250.9	18.1	17.0	0.01	-459.1	309.0	110.9	77.7	33.22	3.338		
6,400.0	6,350.9	6,392.0	6,350.9	18.2	17.2	0.01	-459.1	309.0	110.9	77.4	33.53	3.307		
6,500.0	6,450.9	6,492.0	6,450.9	18.4	17.4	0.01	-459.1	309.0	110.9	77.1	33.85	3.276		
6,600.0	6,550.9	6,592.0	6,550.9	18.5	17.5	0.01	-459.1	309.0	110.9	76.7	34.17	3.246		
6,700.0	6,650.9	6,692.0	6,650.9	18.7	17.7	0.01	-459.1	309.0	110.9	76.4	34.49	3.216		
6,780.6	6,731.4	6,772.7	6,731.5	18.8	17.8	-1.13	-459.2	306.8	110.9	76.0	34.87	3.180		
6,800.0	6,750.9	6,792.1	6,750.7	18.8	17.8	-2.25	-459.2	304.7	110.9	75.8	35.04	3.164		
6,900.0	6,850.9	6,887.4	6,843.5	19.0	17.9	-13.00	-459.8	283.6	113.4	77.1	36.23	3.129		
6,991.0	6,941.8	6,965.3	6,915.4	19.1	17.9	-26.76	-460.6	253.8	125.4	88.4	36.98	3.391		
7,000.0	6,950.9	6,972.5	6,921.8	19.1	17.9	63.10	-460.6	250.5	127.3	97.2	30.13	4.227		
7,050.0	7,000.8	7,011.8	6,955.9	19.2	17.9	55.33	-461.2	231.0	139.4	109.2	30.19	4.619		
7,100.0	7,050.1	7,050.0	6,987.5	19.2	17.9	48.93	-461.7	209.5	153.0	122.8	30.23	5.062		
7,150.0	7,098.3	7,087.5	7,017.0	19.3	17.8	43.69	-462.3	186.2	167.3	137.2	30.08	5.562		
7,200.0	7,145.1	7,124.3	7,044.0	19.3	17.8	39.44	-463.0	161.4	181.7	152.0	29.63	6.131		
7,250.0	7,189.9	7,160.4	7,068.9	19.3	17.8	35.99	-463.7	135.2	195.7	166.9	28.86	6.782		
7,300.0	7,232.4	7,200.0	7,093.9	19.3	17.8	32.99	-464.5	104.5	209.2	181.4	27.78	7.531		
7,350.0	7,272.1	7,231.1	7,111.8	19.2	17.8	30.89	-465.2	79.1	221.8	195.4	26.40	8.401		
7,400.0	7,308.6	7,265.9	7,130.0	19.2	17.7	29.02	-466.0	49.5	233.3	208.6	24.78	9.416		
7,450.0	7,341.6	7,300.0	7,145.8	19.2	17.7	27.51	-466.8	19.3	243.8	220.8	22.98	10.610		
7,500.0	7,370.8	7,334.4	7,159.8	19.1	17.7	26.27	-467.6	-12.1	253.0	231.9	21.08	12.001		
7,550.0	7,395.9	7,368.3	7,171.4	19.1	17.7	25.29	-468.4	-44.0	260.8	241.7	19.17	13.609		
7,600.0	7,416.7	7,400.0	7,180.4	19.1	17.6	24.55	-469.2	-74.4	267.3	250.0	17.35	15.410		
7,650.0	7,432.9	7,435.6	7,188.1	19.1	17.6	23.95	-470.2	-109.0	272.4	256.5	15.84	17.193		
7,700.0	7,444.4	7,469.0	7,193.3	19.0	18.0	23.56	-471.0	-142.1	275.9	261.2	14.74	18.719		
7,750.0	7,451.1	7,500.0	7,196.1	19.1	18.4	23.33	-471.9	-172.9	278.0	263.7	14.31	19.428		
7,793.9	7,452.0	7,532.0	7,196.0	19.6	18.9	23.25	-472.7	-203.9	278.6	264.1	14.57	19.127		
7,794.9	7,452.0	7,532.1	7,196.0	19.6	18.9	23.25	-472.7	-204.0	278.6	264.1	14.58	19.117		
7,797.0	7,452.0	7,534.9	7,196.0	19.6	18.9	23.25	-472.7	-206.8	278.6	264.0	14.61	19.068		
7,797.0	7,452.0	7,534.9	7,196.0	19.6	18.9	23.25	-472.7	-206.8	278.6	264.0	14.61	19.068		
7,800.0	7,452.0	7,537.6	7,196.0	19.6	19.0	23.25	-472.8	-209.5	278.6	264.0	14.66	19.010		
7,834.2	7,452.0	7,569.1	7,195.8	20.1	19.5	23.20	-473.7	-241.0	278.8	263.6	15.15	18.402		
7,900.0	7,452.0	7,629.4	7,194.3	21.2	20.5	22.99	-475.3	-301.2	280.0	263.9	16.10	17.387		
8,000.0	7,452.0	7,724.5	7,189.9	23.0	22.2	22.48	-477.8	-396.2	284.0	266.4	17.62	16.115		
8,100.0	7,452.0	7,824.4	7,184.6	25.0	24.2	21.93	-480.4	-495.9	288.5	269.2	19.27	14.970		
8,200.0	7,452.0	7,924.3	7,179.4	27.1	26.4	21.39	-483.1	-595.6	293.1	272.1	21.00	13.955		
8,300.0	7,452.0	8,024.1	7,174.2	29.3	28.6	20.87	-485.7	-695.3	297.6	274.9	22.77	13.071		
8,400.0	7,452.0	8,124.0	7,168.9	31.7	31.0	20.36	-488.4	-795.0	302.2	277.7	24.56	12.306		
8,500.0	7,452.0	8,223.8	7,163.7	34.1	33.4	19.87	-491.0	-894.7	306.9	280.5	26.35	11.645		
8,600.0	7,452.0	8,323.7	7,158.5	36.5	35.8	19.39	-493.6	-994.4	311.5	283.4	28.13	11.072		

CC - Min centre to center distance or convergent point, SF - min separation factor, ES - min ellipse separation

Company:	Captiva Energy Partners	Local Co-ordinate Reference:	Well Stillroven Farm 7
Project:	SEC.5-T3N-R68W	TVD Reference:	WELL @ 5098.0ft (Original Well Elev)
Reference Site:	Stillroven Farm Pad Sec.5-T3N-R68W	MD Reference:	WELL @ 5098.0ft (Original Well Elev)
Site Error:	0.0 ft	North Reference:	True
Reference Well:	Stillroven Farm 7	Survey Calculation Method:	Minimum Curvature
Well Error:	0.0 ft	Output errors are at	2.00 sigma
Reference Wellbore	Wellbore #1	Database:	US_EDM
Reference Design:	Plan #2 (6-5-17)	Offset TVD Reference:	Offset Datum

Offset Design													Offset Site Error:	0.0 ft
Survey Program: 0-MWD													Offset Well Error:	0.0 ft
Reference		Offset		Semi Major Axis			Distance							Warning
Measured Depth (ft)	Vertical Depth (ft)	Measured Depth (ft)	Vertical Depth (ft)	Reference (ft)	Offset (ft)	Highside Toolface (°)	Offset Wellbore Centre +N/-S (ft)	+E/-W (ft)	Between Centres (ft)	Between Ellipses (ft)	Minimum Separation (ft)	Separation Factor		
8,700.0	7,452.0	8,423.5	7,153.3	39.0	38.3	18.93	-496.3	-1,094.0	316.2	286.3	29.90	10.573		
8,800.0	7,452.0	8,523.4	7,148.0	41.6	40.9	18.48	-498.9	-1,193.7	320.8	289.2	31.65	10.136		
8,900.0	7,452.0	8,623.3	7,142.8	44.1	43.5	18.05	-501.6	-1,293.4	325.5	292.2	33.38	9.753		
9,000.0	7,452.0	8,723.1	7,137.6	46.7	46.1	17.62	-504.2	-1,393.1	330.3	295.2	35.08	9.414		
9,100.0	7,452.0	8,823.0	7,132.4	49.3	48.7	17.21	-506.9	-1,492.8	335.0	298.2	36.76	9.112		
9,200.0	7,452.0	8,922.8	7,127.1	52.0	51.3	16.81	-509.5	-1,592.5	339.8	301.3	38.42	8.844		
9,300.0	7,452.0	9,022.7	7,121.9	54.6	54.0	16.42	-512.2	-1,692.2	344.5	304.5	40.05	8.603		
9,400.0	7,452.0	9,122.6	7,116.7	57.3	56.6	16.04	-514.8	-1,791.9	349.3	307.7	41.65	8.386		
9,500.0	7,452.0	9,222.4	7,111.5	60.0	59.3	15.68	-517.4	-1,891.5	354.1	310.9	43.24	8.190		
9,600.0	7,452.0	9,322.3	7,106.2	62.7	62.0	15.32	-520.1	-1,991.2	358.9	314.1	44.80	8.012		
9,700.0	7,452.0	9,422.1	7,101.0	65.4	64.7	14.97	-522.7	-2,090.9	363.7	317.4	46.34	7.850		
9,800.0	7,452.0	9,522.0	7,095.8	68.1	67.4	14.63	-525.4	-2,190.6	368.6	320.7	47.85	7.702		
9,900.0	7,452.0	9,625.6	7,090.5	70.8	70.2	14.30	-528.1	-2,294.0	373.3	323.9	49.40	7.557		
10,000.0	7,452.0	9,738.0	7,088.0	73.5	73.3	14.23	-530.0	-2,406.4	375.5	324.1	51.37	7.310		
10,100.0	7,452.0	9,839.3	7,088.0	76.2	76.0	14.35	-530.9	-2,507.6	375.7	322.2	53.54	7.017		
10,200.0	7,452.0	9,939.2	7,088.0	79.0	78.8	14.48	-531.9	-2,607.6	375.9	320.2	55.72	6.747		
10,300.0	7,452.0	10,039.2	7,088.0	81.7	81.5	14.60	-532.8	-2,707.6	376.1	318.2	57.92	6.494		
10,400.0	7,452.0	10,139.2	7,088.0	84.4	84.3	14.72	-533.7	-2,807.6	376.4	316.2	60.13	6.259		
10,500.0	7,452.0	10,239.2	7,088.0	87.2	87.0	14.85	-534.7	-2,907.6	376.6	314.2	62.36	6.038		
10,600.0	7,452.0	10,339.2	7,088.0	89.9	89.8	14.97	-535.6	-3,007.6	376.8	312.2	64.61	5.832		
10,700.0	7,452.0	10,439.2	7,088.0	92.7	92.5	15.10	-536.6	-3,107.6	377.0	310.1	66.88	5.637		
10,800.0	7,452.0	10,539.2	7,088.0	95.4	95.3	15.22	-537.5	-3,207.6	377.2	308.1	69.16	5.454		
10,900.0	7,452.0	10,639.2	7,088.0	98.2	98.0	15.34	-538.5	-3,307.6	377.5	306.0	71.46	5.282		
11,000.0	7,452.0	10,739.2	7,088.0	101.0	100.8	15.47	-539.4	-3,407.6	377.7	303.9	73.78	5.119		
11,100.0	7,452.0	10,839.2	7,088.0	103.7	103.6	15.59	-540.4	-3,507.6	377.9	301.8	76.11	4.965		
11,200.0	7,452.0	10,939.2	7,088.0	106.5	106.3	15.71	-541.3	-3,607.5	378.1	299.7	78.46	4.819		
11,300.0	7,452.0	11,039.2	7,088.0	109.3	109.1	15.84	-542.2	-3,707.5	378.4	297.5	80.83	4.681		
11,400.0	7,452.0	11,139.2	7,088.0	112.0	111.9	15.96	-543.2	-3,807.5	378.6	295.4	83.22	4.549		
11,500.0	7,452.0	11,239.2	7,088.0	114.8	114.7	16.08	-544.1	-3,907.5	378.8	293.2	85.62	4.425		
11,600.0	7,452.0	11,339.2	7,088.0	117.6	117.4	16.21	-545.1	-4,007.5	379.1	291.0	88.04	4.306		
11,700.0	7,452.0	11,439.2	7,088.0	120.3	120.2	16.33	-546.0	-4,107.5	379.3	288.8	90.48	4.192		
11,800.0	7,452.0	11,539.2	7,088.0	123.1	123.0	16.45	-547.0	-4,207.5	379.5	286.6	92.93	4.084		
11,900.0	7,452.0	11,639.2	7,088.0	125.9	125.8	16.57	-547.9	-4,307.5	379.8	284.4	95.40	3.981		
12,000.0	7,452.0	11,739.2	7,088.0	128.7	128.5	16.70	-548.9	-4,407.5	380.0	282.1	97.89	3.882		
12,095.0	7,452.0	11,833.8	7,088.0	131.3	131.2	16.81	-549.8	-4,502.1	380.3	280.0	100.26	3.793		

Company:	Captiva Energy Partners	Local Co-ordinate Reference:	Well Stillroven Farm 7
Project:	SEC.5-T3N-R68W	TVD Reference:	WELL @ 5098.0ft (Original Well Elev)
Reference Site:	Stillroven Farm Pad Sec.5-T3N-R68W	MD Reference:	WELL @ 5098.0ft (Original Well Elev)
Site Error:	0.0 ft	North Reference:	True
Reference Well:	Stillroven Farm 7	Survey Calculation Method:	Minimum Curvature
Well Error:	0.0 ft	Output errors are at	2.00 sigma
Reference Wellbore	Wellbore #1	Database:	US_EDM
Reference Design:	Plan #2 (6-5-17)	Offset TVD Reference:	Offset Datum

Offset Design													Offset Site Error:	0.0 ft
Survey Program: 0-MWD													Offset Well Error:	0.0 ft
Reference		Offset		Semi Major Axis		Highside Toolface (°)	Distance		Between Centres (ft)	Between Ellipses (ft)	Minimum Separation (ft)	Separation Factor	Warning	
Measured Depth (ft)	Vertical Depth (ft)	Measured Depth (ft)	Vertical Depth (ft)	Reference (ft)	Offset (ft)		Offset Wellbore Centre +N/-S (ft)	+E/-W (ft)						
0.0	0.0	0.0	0.0	0.0	0.0	179.89	-15.2	0.0	15.2	15.2	0.00	N/A		
100.0	100.0	100.0	100.0	0.1	0.1	179.89	-15.2	0.0	15.2	14.9	0.22	67.426		
200.0	200.0	200.0	200.0	0.3	0.3	179.89	-15.2	0.0	15.2	14.5	0.67	22.475		
300.0	300.0	300.0	300.0	0.6	0.6	179.89	-15.2	0.0	15.2	14.0	1.12	13.485		
400.0	400.0	400.0	400.0	0.8	0.8	179.89	-15.2	0.0	15.2	13.6	1.57	9.632		
500.0	500.0	500.0	500.0	1.0	1.0	179.89	-15.2	0.0	15.2	13.1	2.02	7.492		
600.0	600.0	600.0	600.0	1.2	1.2	179.89	-15.2	0.0	15.2	12.7	2.47	6.130		
700.0	700.0	700.0	700.0	1.5	1.5	179.89	-15.2	0.0	15.2	12.2	2.92	5.187		
800.0	800.0	800.0	800.0	1.7	1.7	179.89	-15.2	0.0	15.2	11.8	3.37	4.495		
900.0	900.0	900.0	900.0	1.9	1.9	179.89	-15.2	0.0	15.2	11.3	3.82	3.966		
1,000.0	1,000.0	1,000.0	1,000.0	2.1	2.1	179.89	-15.2	0.0	15.2	10.9	4.27	3.549 CC, ES		
1,100.0	1,100.0	1,099.6	1,099.6	2.4	2.3	178.13	-16.4	0.5	16.4	11.7	4.69	3.488		
1,200.0	1,200.0	1,199.1	1,199.0	2.6	2.5	174.13	-19.9	2.0	20.1	15.0	5.10	3.938		
1,300.0	1,300.0	1,298.4	1,298.1	2.8	2.7	19.38	-25.9	4.6	25.1	19.6	5.48	4.585		
1,400.0	1,399.9	1,397.6	1,396.8	3.0	2.9	17.71	-34.2	8.1	30.3	24.4	5.84	5.179		
1,500.0	1,499.7	1,496.6	1,495.2	3.1	3.1	16.93	-44.8	12.6	35.5	29.3	6.22	5.701		
1,600.0	1,599.3	1,595.5	1,593.1	3.4	3.4	16.69	-57.8	18.1	40.7	34.1	6.61	6.158		
1,700.0	1,698.6	1,694.2	1,690.4	3.6	3.7	16.81	-73.1	24.5	46.0	39.0	7.02	6.557		
1,803.3	1,800.8	1,797.1	1,791.5	3.8	4.0	17.38	-90.8	32.0	50.7	43.3	7.45	6.809		
1,900.0	1,896.3	1,893.8	1,886.5	4.1	4.3	18.25	-107.4	39.0	53.9	46.0	7.88	6.845		
2,000.0	1,995.0	1,993.7	1,984.6	4.4	4.7	19.05	-124.6	46.3	57.3	48.9	8.34	6.870		
2,100.0	2,093.8	2,093.7	2,082.8	4.7	5.0	19.76	-141.8	53.6	60.6	51.8	8.81	6.883		
2,200.0	2,192.6	2,193.6	2,181.0	5.0	5.4	20.40	-159.0	60.8	64.0	54.7	9.29	6.888		
2,300.0	2,291.3	2,293.5	2,279.2	5.3	5.8	20.97	-176.3	68.1	67.4	57.6	9.78	6.887		
2,400.0	2,390.1	2,393.5	2,377.3	5.6	6.2	21.49	-193.5	75.4	70.8	60.5	10.28	6.882		
2,500.0	2,488.8	2,493.4	2,475.5	6.0	6.6	21.96	-210.7	82.7	74.2	63.4	10.79	6.872		
2,600.0	2,587.6	2,593.4	2,573.7	6.3	7.0	22.39	-227.9	90.0	77.6	66.3	11.31	6.860		
2,700.0	2,686.3	2,693.3	2,671.9	6.7	7.4	22.78	-245.1	97.2	81.0	69.1	11.83	6.846		
2,800.0	2,785.1	2,793.2	2,770.1	7.0	7.8	23.15	-262.3	104.5	84.4	72.0	12.35	6.831		
2,900.0	2,883.8	2,893.2	2,868.2	7.4	8.2	23.48	-279.5	111.8	87.8	74.9	12.88	6.814		
3,000.0	2,982.6	2,993.1	2,966.4	7.7	8.6	23.79	-296.7	119.1	91.2	77.8	13.41	6.797		
3,100.0	3,081.4	3,093.1	3,064.6	8.1	9.0	24.08	-314.0	126.3	94.6	80.6	13.95	6.780		
3,200.0	3,180.1	3,193.0	3,162.8	8.4	9.4	24.34	-331.2	133.6	98.0	83.5	14.49	6.762		
3,300.0	3,278.9	3,292.9	3,261.0	8.8	9.8	24.59	-348.4	140.9	101.4	86.4	15.04	6.745		
3,400.0	3,377.6	3,392.9	3,359.1	9.1	10.2	24.82	-365.6	148.2	104.8	89.2	15.58	6.727		
3,500.0	3,476.4	3,492.8	3,457.3	9.5	10.6	25.04	-382.8	155.4	108.2	92.1	16.13	6.710		
3,600.0	3,575.1	3,592.8	3,555.5	9.9	11.0	25.24	-400.0	162.7	111.7	95.0	16.68	6.693		
3,700.0	3,673.9	3,692.7	3,653.7	10.2	11.5	25.44	-417.2	170.0	115.1	97.8	17.24	6.676		
3,800.0	3,772.6	3,792.7	3,751.8	10.6	11.9	25.62	-434.4	177.3	118.5	100.7	17.79	6.660		
3,900.0	3,871.4	3,892.6	3,850.0	11.0	12.3	25.79	-451.7	184.5	121.9	103.6	18.35	6.644		
4,000.0	3,970.2	3,992.5	3,948.2	11.3	12.7	25.95	-468.9	191.8	125.4	106.4	18.91	6.629		
4,100.0	4,068.9	4,092.5	4,046.4	11.7	13.1	26.10	-486.1	199.1	128.8	109.3	19.47	6.614		
4,200.0	4,167.7	4,192.4	4,144.6	12.1	13.6	26.25	-503.3	206.4	132.2	112.2	20.03	6.599		
4,300.0	4,266.4	4,292.4	4,242.7	12.4	14.0	26.39	-520.5	213.6	135.6	115.0	20.60	6.585		
4,400.0	4,365.2	4,392.3	4,340.9	12.8	14.4	26.52	-537.7	220.9	139.1	117.9	21.16	6.571		
4,500.0	4,463.9	4,492.2	4,439.1	13.2	14.8	26.64	-554.9	228.2	142.5	120.8	21.73	6.558		
4,600.0	4,562.7	4,592.2	4,537.3	13.6	15.2	26.76	-572.1	235.5	145.9	123.6	22.29	6.545		
4,700.0	4,661.4	4,692.1	4,635.4	13.9	15.7	26.88	-589.4	242.7	149.3	126.5	22.86	6.532		
4,800.0	4,760.2	4,792.1	4,733.6	14.3	16.1	26.98	-606.6	250.0	152.8	129.3	23.43	6.520		
4,900.0	4,859.0	4,892.0	4,831.8	14.7	16.5	27.09	-623.8	257.3	156.2	132.2	24.00	6.508		
5,000.0	4,957.7	4,991.9	4,930.0	15.1	16.9	27.19	-641.0	264.6	159.6	135.1	24.57	6.496		
5,100.0	5,056.5	5,091.9	5,028.2	15.4	17.3	27.28	-658.2	271.9	163.1	137.9	25.14	6.485		

CC - Min centre to center distance or convergent point, SF - min separation factor, ES - min ellipse separation

Company:	Captiva Energy Partners	Local Co-ordinate Reference:	Well Stillroven Farm 7
Project:	SEC.5-T3N-R68W	TVD Reference:	WELL @ 5098.0ft (Original Well Elev)
Reference Site:	Stillroven Farm Pad Sec.5-T3N-R68W	MD Reference:	WELL @ 5098.0ft (Original Well Elev)
Site Error:	0.0 ft	North Reference:	True
Reference Well:	Stillroven Farm 7	Survey Calculation Method:	Minimum Curvature
Well Error:	0.0 ft	Output errors are at	2.00 sigma
Reference Wellbore	Wellbore #1	Database:	US_EDM
Reference Design:	Plan #2 (6-5-17)	Offset TVD Reference:	Offset Datum

Offset Design													Offset Site Error:	0.0 ft
Survey Program: 0-MWD													Offset Well Error:	0.0 ft
Reference		Offset		Semi Major Axis			Distance							Warning
Measured Depth (ft)	Vertical Depth (ft)	Measured Depth (ft)	Vertical Depth (ft)	Reference (ft)	Offset (ft)	Highside Toolface (°)	Offset Wellbore Centre +N/-S (ft)	+E/-W (ft)	Between Centres (ft)	Between Ellipses (ft)	Minimum Separation (ft)	Separation Factor		
5,200.0	5,155.2	5,191.8	5,126.3	15.8	17.8	27.37	-675.4	279.1	166.5	140.8	25.72	6.474		
5,300.0	5,254.0	5,291.8	5,224.5	16.2	18.2	27.46	-692.6	286.4	169.9	143.6	26.29	6.464		
5,396.6	5,349.4	5,391.7	5,322.8	16.5	18.6	27.62	-709.3	293.4	172.7	145.9	26.85	6.433		
5,400.0	5,352.7	5,395.2	5,326.3	16.6	18.6	27.63	-709.8	293.7	172.8	145.9	26.87	6.430		
5,500.0	5,451.8	5,501.1	5,431.0	16.8	18.9	27.96	-724.2	299.7	174.1	146.7	27.38	6.359		
5,600.0	5,551.2	5,607.1	5,536.3	17.0	19.1	28.20	-735.0	304.3	175.1	147.3	27.82	6.294		
5,700.0	5,651.0	5,713.1	5,642.0	17.2	19.3	28.36	-742.1	307.3	175.8	147.6	28.20	6.234		
5,800.0	5,750.9	5,819.1	5,747.9	17.4	19.5	28.44	-745.7	308.8	176.1	147.6	28.51	6.177		
5,849.1	5,800.0	5,871.1	5,800.0	17.5	19.6	179.99	-746.2	309.0	176.2	140.9	35.21	5.003		
5,900.0	5,850.9	5,922.0	5,850.9	17.5	19.6	179.99	-746.2	309.0	176.2	140.8	35.35	4.983		
6,000.0	5,950.9	6,022.0	5,950.9	17.7	19.7	179.99	-746.2	309.0	176.2	140.5	35.62	4.946		
6,100.0	6,050.9	6,122.0	6,050.9	17.8	19.9	179.99	-746.2	309.0	176.2	140.3	35.89	4.909		
6,200.0	6,150.9	6,222.0	6,150.9	18.0	20.0	179.99	-746.2	309.0	176.2	140.0	36.16	4.872		
6,300.0	6,250.9	6,322.0	6,250.9	18.1	20.1	179.99	-746.2	309.0	176.2	139.7	36.43	4.835		
6,400.0	6,350.9	6,422.0	6,350.9	18.2	20.2	179.99	-746.2	309.0	176.2	139.4	36.71	4.798		
6,500.0	6,450.9	6,522.0	6,450.9	18.4	20.4	179.99	-746.2	309.0	176.2	139.2	36.99	4.762		
6,600.0	6,550.9	6,622.0	6,550.9	18.5	20.5	179.99	-746.2	309.0	176.2	138.9	37.28	4.725		
6,700.0	6,650.9	6,722.0	6,650.9	18.7	20.6	179.99	-746.2	309.0	176.2	138.6	37.57	4.689		
6,759.1	6,710.0	6,781.2	6,710.0	18.8	20.7	179.99	-746.2	309.0	176.2	138.4	37.74	4.667		
6,800.0	6,750.9	6,821.9	6,750.7	18.8	20.7	-179.90	-746.2	308.7	176.2	138.3	37.85	4.655		
6,900.0	6,850.9	6,918.9	6,846.8	19.0	20.8	-175.76	-746.5	295.9	177.0	139.4	37.61	4.707		
6,991.0	6,941.8	7,000.0	6,924.0	19.1	20.9	-168.04	-747.1	271.5	182.0	145.2	36.80	4.944		
7,000.0	6,950.9	7,008.2	6,931.6	19.1	20.9	-75.57	-747.2	268.3	182.8	148.5	34.35	5.323		
7,050.0	7,000.8	7,050.0	6,969.3	19.2	20.9	-70.38	-747.7	250.4	188.6	153.4	35.23	5.354		
7,100.0	7,050.1	7,090.7	7,004.5	19.2	20.8	-65.65	-748.2	230.1	195.7	159.8	35.87	5.454		
7,150.0	7,098.3	7,130.5	7,037.3	19.3	20.8	-61.39	-748.8	207.5	203.5	167.3	36.21	5.621		
7,200.0	7,145.1	7,169.5	7,067.6	19.3	20.8	-57.62	-749.5	183.0	211.9	175.7	36.20	5.853		
7,250.0	7,189.9	7,207.9	7,095.6	19.3	20.8	-54.30	-750.2	156.6	220.4	184.6	35.84	6.150		
7,300.0	7,232.4	7,250.0	7,123.8	19.3	20.8	-51.20	-751.0	125.4	228.9	193.7	35.16	6.511		
7,350.0	7,272.1	7,283.0	7,144.1	19.2	20.7	-48.95	-751.7	99.4	237.0	202.8	34.21	6.927		
7,400.0	7,308.6	7,319.9	7,164.7	19.2	20.7	-46.84	-752.5	68.9	244.7	211.6	33.07	7.399		
7,450.0	7,341.6	7,350.0	7,179.9	19.2	20.7	-45.24	-753.2	42.9	251.8	220.0	31.82	7.914		
7,500.0	7,370.8	7,392.6	7,198.7	19.1	20.7	-43.58	-754.2	4.7	257.9	227.4	30.52	8.452		
7,550.0	7,395.9	7,428.5	7,212.0	19.1	20.7	-42.39	-755.1	-28.7	263.4	234.0	29.33	8.978		
7,600.0	7,416.7	7,464.3	7,222.9	19.1	20.7	-41.45	-756.0	-62.7	267.8	239.5	28.36	9.445		
7,650.0	7,432.9	7,500.0	7,231.4	19.1	20.7	-40.75	-756.9	-97.4	271.3	243.6	27.73	9.785		
7,700.0	7,444.4	7,535.3	7,237.3	19.0	20.7	-40.28	-757.8	-132.2	273.7	246.2	27.55	9.936		
7,750.0	7,451.1	7,568.0	7,240.4	19.1	20.7	-39.99	-758.7	-164.7	275.4	247.5	27.80	9.904		
7,793.9	7,452.0	7,604.3	7,241.0	19.6	20.8	-39.98	-759.6	-200.0	275.4	246.8	28.57	9.641		
7,794.9	7,452.0	7,604.3	7,241.0	19.6	20.8	-39.98	-759.6	-200.0	275.4	246.8	28.58	9.637		
7,797.2	7,452.0	7,604.3	7,241.0	19.6	20.8	-39.98	-759.6	-200.0	275.4	246.8	28.60	9.629		
7,800.0	7,452.0	7,606.8	7,241.0	19.6	20.8	-39.98	-759.7	-202.4	275.4	246.7	28.65	9.611		
7,834.2	7,452.0	7,641.1	7,241.0	20.1	21.0	-40.01	-760.6	-236.7	275.5	246.1	29.39	9.375		
7,900.0	7,452.0	7,706.9	7,241.0	21.2	21.7	-40.10	-762.3	-302.5	275.8	245.0	30.89	8.930		
8,000.0	7,452.0	7,807.0	7,241.0	23.0	23.3	-40.23	-764.9	-402.5	276.4	242.9	33.43	8.267		
8,100.0	7,452.0	7,907.0	7,241.0	25.0	25.2	-40.35	-767.4	-502.6	276.8	240.6	36.20	7.647		
8,200.0	7,452.0	8,007.1	7,241.0	27.1	27.3	-40.46	-769.9	-602.6	277.3	238.1	39.16	7.081		
8,300.0	7,452.0	8,107.2	7,241.0	29.3	29.5	-40.56	-772.4	-702.6	277.8	235.5	42.27	6.570		
8,400.0	7,452.0	8,207.2	7,241.0	31.7	31.8	-40.66	-774.8	-802.7	278.2	232.7	45.50	6.113		
8,500.0	7,452.0	8,307.3	7,241.0	34.1	34.2	-40.76	-777.2	-902.7	278.6	229.7	48.83	5.704		
8,600.0	7,452.0	8,407.4	7,241.0	36.5	36.6	-40.84	-779.6	-1,002.8	278.9	226.7	52.24	5.339		
8,700.0	7,452.0	8,507.4	7,241.0	39.0	39.1	-40.92	-781.9	-1,102.8	279.3	223.5	55.72	5.012		

CC - Min centre to center distance or convergent point, SF - min separation factor, ES - min ellipse separation

Company:	Captiva Energy Partners	Local Co-ordinate Reference:	Well Stillroven Farm 7
Project:	SEC.5-T3N-R68W	TVD Reference:	WELL @ 5098.0ft (Original Well Elev)
Reference Site:	Stillroven Farm Pad Sec.5-T3N-R68W	MD Reference:	WELL @ 5098.0ft (Original Well Elev)
Site Error:	0.0 ft	North Reference:	True
Reference Well:	Stillroven Farm 7	Survey Calculation Method:	Minimum Curvature
Well Error:	0.0 ft	Output errors are at	2.00 sigma
Reference Wellbore	Wellbore #1	Database:	US_EDM
Reference Design:	Plan #2 (6-5-17)	Offset TVD Reference:	Offset Datum

Offset Design		Stillroven Farm Pad Sec.5-T3N-R68W - Stillroven Farm 8 - Wellbore #1 - Plan #2 (6-5-17)											Offset Site Error: 0.0 ft	
Survey Program: 0-MWD													Offset Well Error: 0.0 ft	
Reference		Offset		Semi Major Axis			Distance							Warning
Measured Depth	Vertical Depth	Measured Depth	Vertical Depth	Reference	Offset	Highside Toolface	Offset Wellbore Centre +N/-S	+E/-W	Between Centres	Between Ellipses	Minimum Separation	Separation Factor		
(ft)	(ft)	(ft)	(ft)	(ft)	(ft)	(°)	(ft)	(ft)	(ft)	(ft)	(ft)			
8,800.0	7,452.0	8,607.5	7,241.0	41.6	41.7	-41.00	-784.1	-1,202.8	279.6	220.3	59.25	4.718		
8,900.0	7,452.0	8,707.6	7,241.0	44.1	44.2	-41.06	-786.4	-1,302.9	279.9	217.0	62.83	4.454		
9,000.0	7,452.0	8,807.7	7,241.0	46.7	46.8	-41.13	-788.5	-1,402.9	280.1	213.7	66.44	4.216		
9,100.0	7,452.0	8,907.7	7,241.0	49.3	49.4	-41.18	-790.7	-1,503.0	280.4	210.3	70.09	4.000		
9,200.0	7,452.0	9,007.8	7,241.0	52.0	52.1	-41.23	-792.8	-1,603.0	280.6	206.8	73.76	3.804		
9,300.0	7,452.0	9,107.9	7,241.0	54.6	54.7	-41.27	-794.9	-1,703.1	280.7	203.3	77.45	3.625		
9,400.0	7,452.0	9,208.0	7,241.0	57.3	57.4	-41.31	-796.9	-1,803.1	280.9	199.7	81.16	3.461		
9,500.0	7,452.0	9,308.0	7,241.0	60.0	60.1	-41.34	-798.9	-1,903.2	281.0	196.1	84.89	3.311		
9,600.0	7,452.0	9,408.1	7,241.0	62.7	62.7	-41.36	-800.8	-2,003.2	281.1	192.5	88.62	3.172		
9,700.0	7,452.0	9,508.2	7,241.0	65.4	65.4	-41.38	-802.8	-2,103.3	281.2	188.9	92.36	3.045		
9,800.0	7,452.0	9,608.2	7,241.0	68.1	68.1	-41.40	-804.6	-2,203.4	281.3	185.2	96.11	2.927		
9,900.0	7,452.0	9,708.3	7,241.0	70.8	70.9	-41.40	-806.5	-2,303.4	281.3	181.4	99.85	2.817		
10,000.0	7,452.0	9,808.4	7,241.0	73.5	73.6	-41.40	-808.3	-2,403.5	281.3	177.7	103.60	2.715		
10,100.0	7,452.0	9,908.5	7,241.0	76.2	76.3	-41.40	-810.0	-2,503.5	281.3	173.9	107.34	2.620		
10,200.0	7,452.0	10,008.5	7,241.0	79.0	79.0	-41.38	-811.7	-2,603.6	281.2	170.1	111.09	2.532		
10,300.0	7,452.0	10,108.6	7,241.0	81.7	81.8	-41.37	-813.4	-2,703.7	281.1	166.3	114.82	2.449		
10,400.0	7,452.0	10,208.7	7,241.0	84.4	84.5	-41.34	-815.0	-2,803.7	281.0	162.5	118.55	2.371		
10,500.0	7,452.0	10,308.8	7,241.0	87.2	87.3	-41.31	-816.6	-2,903.8	280.9	158.7	122.26	2.298		
10,600.0	7,452.0	10,408.8	7,241.0	89.9	90.0	-41.28	-818.2	-3,003.8	280.8	154.8	125.97	2.229		
10,700.0	7,452.0	10,508.9	7,241.0	92.7	92.8	-41.23	-819.7	-3,103.9	280.6	150.9	129.66	2.164		
10,800.0	7,452.0	10,609.0	7,241.0	95.4	95.5	-41.19	-821.2	-3,204.0	280.4	147.0	133.34	2.103		
10,900.0	7,452.0	10,709.1	7,241.0	98.2	98.3	-41.13	-822.6	-3,304.0	280.1	143.1	137.00	2.045		
11,000.0	7,452.0	10,809.1	7,241.0	101.0	101.0	-41.07	-824.0	-3,404.1	279.9	139.2	140.65	1.990		
11,100.0	7,452.0	10,909.2	7,241.0	103.7	103.8	-41.00	-825.4	-3,504.1	279.6	135.3	144.27	1.938		
11,200.0	7,452.0	11,009.3	7,241.0	106.5	106.6	-40.93	-826.7	-3,604.2	279.3	131.4	147.87	1.889		
11,300.0	7,452.0	11,109.3	7,241.0	109.3	109.3	-40.85	-828.0	-3,704.3	279.0	127.5	151.45	1.842		
11,400.0	7,452.0	11,209.4	7,241.0	112.0	112.1	-40.77	-829.2	-3,804.3	278.6	123.6	155.01	1.797		
11,500.0	7,452.0	11,309.5	7,241.0	114.8	114.9	-40.67	-830.4	-3,904.4	278.2	119.7	158.53	1.755		
11,600.0	7,452.0	11,409.5	7,241.0	117.6	117.7	-40.57	-831.6	-4,004.5	277.8	115.8	162.04	1.714		
11,700.0	7,452.0	11,509.6	7,241.0	120.3	120.4	-40.47	-832.7	-4,104.5	277.4	111.8	165.51	1.676		
11,800.0	7,452.0	11,609.7	7,241.0	123.1	123.2	-40.36	-833.8	-4,204.6	276.9	107.9	168.95	1.639		
11,900.0	7,452.0	11,709.8	7,241.0	125.9	126.0	-40.24	-834.8	-4,304.6	276.4	104.1	172.36	1.604		
12,000.0	7,452.0	11,809.8	7,241.0	128.7	128.8	-40.11	-835.8	-4,404.7	275.9	100.2	175.73	1.570		
12,095.0	7,452.0	11,904.9	7,241.0	131.3	131.4	-39.99	-836.7	-4,499.8	275.4	96.5	178.90	1.539 SF		

Company:	Captiva Energy Partners	Local Co-ordinate Reference:	Well Stillroven Farm 7
Project:	SEC.5-T3N-R68W	TVD Reference:	WELL @ 5098.0ft (Original Well Elev)
Reference Site:	Stillroven Farm Pad Sec.5-T3N-R68W	MD Reference:	WELL @ 5098.0ft (Original Well Elev)
Site Error:	0.0 ft	North Reference:	True
Reference Well:	Stillroven Farm 7	Survey Calculation Method:	Minimum Curvature
Well Error:	0.0 ft	Output errors are at	2.00 sigma
Reference Wellbore	Wellbore #1	Database:	US_EDM
Reference Design:	Plan #2 (6-5-17)	Offset TVD Reference:	Offset Datum

Offset Design													Offset Site Error:	0.0 ft
Survey Program: 0-MWD													Offset Well Error:	0.0 ft
Reference		Offset		Semi Major Axis			Distance							Warning
Measured Depth (ft)	Vertical Depth (ft)	Measured Depth (ft)	Vertical Depth (ft)	Reference (ft)	Offset (ft)	Highside Toolface (°)	Offset Wellbore Centre +N/-S (ft)	+E/-W (ft)	Between Centres (ft)	Between Ellipses (ft)	Minimum Separation (ft)	Separation Factor		
0.0	0.0	0.0	0.0	0.0	0.0	179.84	-30.0	0.1	30.0					
100.0	100.0	100.0	100.0	0.1	0.1	179.84	-30.0	0.1	30.0	29.8	0.22	133.393		
200.0	200.0	200.0	200.0	0.3	0.3	179.84	-30.0	0.1	30.0	29.3	0.67	44.464		
300.0	300.0	300.0	300.0	0.6	0.6	179.84	-30.0	0.1	30.0	28.9	1.12	26.679		
400.0	400.0	400.0	400.0	0.8	0.8	179.84	-30.0	0.1	30.0	28.4	1.57	19.056		
500.0	500.0	500.0	500.0	1.0	1.0	179.84	-30.0	0.1	30.0	28.0	2.02	14.821		
600.0	600.0	600.0	600.0	1.2	1.2	179.84	-30.0	0.1	30.0	27.5	2.47	12.127		
700.0	700.0	700.0	700.0	1.5	1.5	179.84	-30.0	0.1	30.0	27.1	2.92	10.261		
800.0	800.0	800.0	800.0	1.7	1.7	179.84	-30.0	0.1	30.0	26.6	3.37	8.893 CC, ES		
900.0	900.0	899.2	899.2	1.9	1.9	179.21	-31.2	0.4	31.2	27.4	3.79	8.237 SF		
1,000.0	1,000.0	998.3	998.2	2.1	2.1	177.58	-34.9	1.5	35.0	30.8	4.20	8.345		
1,100.0	1,100.0	1,097.1	1,096.8	2.4	2.3	175.53	-41.1	3.2	41.3	36.7	4.61	8.969		
1,200.0	1,200.0	1,195.6	1,194.9	2.6	2.5	173.54	-49.7	5.6	50.3	45.2	5.04	9.981		
1,300.0	1,300.0	1,293.6	1,292.3	2.8	2.7	20.66	-60.6	8.7	60.5	55.1	5.43	11.155		
1,400.0	1,399.9	1,391.4	1,389.1	3.0	2.9	20.16	-74.0	12.5	70.9	65.1	5.81	12.208		
1,500.0	1,499.7	1,488.9	1,485.2	3.1	3.2	20.16	-89.6	16.9	81.4	75.2	6.20	13.117		
1,600.0	1,599.3	1,586.2	1,580.7	3.4	3.6	20.51	-107.6	21.9	91.9	85.3	6.61	13.901		
1,700.0	1,698.6	1,683.2	1,675.3	3.6	3.9	21.08	-127.8	27.6	102.5	95.5	7.03	14.573		
1,803.3	1,800.8	1,785.3	1,774.6	3.8	4.4	21.92	-150.9	34.1	112.8	105.3	7.49	15.052		
1,900.0	1,896.3	1,881.6	1,868.3	4.1	4.8	22.87	-172.7	40.2	121.2	113.3	7.95	15.259		
2,000.0	1,995.0	1,981.2	1,965.1	4.4	5.2	23.72	-195.2	46.6	130.1	121.6	8.44	15.418		
2,100.0	2,093.8	2,080.8	2,061.9	4.7	5.7	24.45	-217.8	52.9	138.9	130.0	8.94	15.544		
2,200.0	2,192.6	2,180.4	2,158.7	5.0	6.1	25.11	-240.3	59.2	147.7	138.3	9.45	15.639		
2,300.0	2,291.3	2,280.0	2,255.5	5.3	6.6	25.68	-262.8	65.6	156.6	146.7	9.97	15.711		
2,400.0	2,390.1	2,379.6	2,352.3	5.6	7.1	26.20	-285.4	71.9	165.5	155.0	10.50	15.764		
2,500.0	2,488.8	2,479.2	2,449.1	6.0	7.6	26.66	-307.9	78.3	174.4	163.4	11.04	15.802		
2,600.0	2,587.6	2,578.8	2,545.9	6.3	8.0	27.08	-330.4	84.6	183.3	171.7	11.58	15.827		
2,700.0	2,686.3	2,678.4	2,642.7	6.7	8.5	27.46	-353.0	90.9	192.2	180.1	12.13	15.844		
2,800.0	2,785.1	2,778.0	2,739.5	7.0	9.0	27.80	-375.5	97.3	201.1	188.5	12.69	15.852		
2,900.0	2,883.8	2,877.6	2,836.3	7.4	9.5	28.12	-398.1	103.6	210.1	196.8	13.25	15.855		
3,000.0	2,982.6	2,977.2	2,933.1	7.7	10.0	28.41	-420.6	110.0	219.0	205.2	13.82	15.853		
3,100.0	3,081.4	3,076.8	3,029.9	8.1	10.5	28.68	-443.1	116.3	228.0	213.6	14.38	15.848		
3,200.0	3,180.1	3,176.4	3,126.7	8.4	11.0	28.92	-465.7	122.6	236.9	221.9	14.96	15.839		
3,300.0	3,278.9	3,276.0	3,223.5	8.8	11.5	29.15	-488.2	129.0	245.9	230.3	15.53	15.828		
3,400.0	3,377.6	3,375.6	3,320.3	9.1	12.0	29.37	-510.8	135.3	254.8	238.7	16.11	15.816		
3,500.0	3,476.4	3,475.2	3,417.1	9.5	12.4	29.57	-533.3	141.7	263.8	247.1	16.69	15.802		
3,600.0	3,575.1	3,574.7	3,513.9	9.9	12.9	29.75	-555.8	148.0	272.7	255.4	17.28	15.787		
3,700.0	3,673.9	3,674.3	3,610.7	10.2	13.4	29.93	-578.4	154.3	281.7	263.8	17.86	15.771		
3,800.0	3,772.6	3,773.9	3,707.5	10.6	13.9	30.09	-600.9	160.7	290.7	272.2	18.45	15.755		
3,900.0	3,871.4	3,873.5	3,804.3	11.0	14.4	30.24	-623.4	167.0	299.6	280.6	19.04	15.738		
4,000.0	3,970.2	3,973.1	3,901.1	11.3	14.9	30.39	-646.0	173.4	308.6	289.0	19.63	15.722		
4,100.0	4,068.9	4,072.7	3,997.9	11.7	15.4	30.52	-668.5	179.7	317.6	297.3	20.22	15.705		
4,200.0	4,167.7	4,172.3	4,094.7	12.1	15.9	30.65	-691.1	186.0	326.5	305.7	20.81	15.688		
4,300.0	4,266.4	4,271.9	4,191.5	12.4	16.4	30.77	-713.6	192.4	335.5	314.1	21.41	15.671		
4,400.0	4,365.2	4,371.5	4,288.3	12.8	16.9	30.89	-736.1	198.7	344.5	322.5	22.01	15.655		
4,500.0	4,463.9	4,471.1	4,385.1	13.2	17.4	31.00	-758.7	205.0	353.5	330.9	22.60	15.638		
4,600.0	4,562.7	4,570.7	4,481.9	13.6	17.9	31.10	-781.2	211.4	362.4	339.2	23.20	15.622		
4,700.0	4,661.4	4,670.3	4,578.7	13.9	18.4	31.20	-803.7	217.7	371.4	347.6	23.80	15.606		
4,800.0	4,760.2	4,769.9	4,675.5	14.3	18.9	31.30	-826.3	224.1	380.4	356.0	24.40	15.590		
4,900.0	4,859.0	4,869.5	4,772.3	14.7	19.4	31.39	-848.8	230.4	389.4	364.4	25.00	15.575		
5,000.0	4,957.7	4,969.1	4,869.1	15.1	19.9	31.47	-871.4	236.7	398.4	372.8	25.60	15.560		
5,100.0	5,056.5	5,068.7	4,966.0	15.4	20.4	31.56	-893.9	243.1	407.3	381.1	26.20	15.545		

CC - Min centre to center distance or convergent point, SF - min separation factor, ES - min ellipse separation

Company:	Captiva Energy Partners	Local Co-ordinate Reference:	Well Stillroven Farm 7
Project:	SEC.5-T3N-R68W	TVD Reference:	WELL @ 5098.0ft (Original Well Elev)
Reference Site:	Stillroven Farm Pad Sec.5-T3N-R68W	MD Reference:	WELL @ 5098.0ft (Original Well Elev)
Site Error:	0.0 ft	North Reference:	True
Reference Well:	Stillroven Farm 7	Survey Calculation Method:	Minimum Curvature
Well Error:	0.0 ft	Output errors are at	2.00 sigma
Reference Wellbore	Wellbore #1	Database:	US_EDM
Reference Design:	Plan #2 (6-5-17)	Offset TVD Reference:	Offset Datum

Offset Design												Offset Site Error:	0.0 ft
Stillroven Farm Pad Sec.5-T3N-R68W - Stillroven Farm 9 - Wellbore #1 - Plan #2(6-5-17)												Offset Well Error:	0.0 ft
Survey Program: 0-MWD													
Reference		Offset		Semi Major Axis			Distance						
Measured Depth	Vertical Depth	Measured Depth	Vertical Depth	Reference	Offset	Highside Toolface	Offset Wellbore Centre		Between Centres	Between Ellipses	Minimum Separation	Separation Factor	Warning
(ft)	(ft)	(ft)	(ft)	(ft)	(ft)	(°)	+N/-S (ft)	+E/-W (ft)	(ft)	(ft)	(ft)		
5,200.0	5,155.2	5,168.3	5,062.8	15.8	20.9	31.63	-916.4	249.4	416.3	389.5	26.81	15.531	
5,300.0	5,254.0	5,267.8	5,159.6	16.2	21.4	31.71	-939.0	255.8	425.3	397.9	27.41	15.517	
5,396.6	5,349.4	5,364.1	5,253.1	16.5	21.9	31.78	-960.8	261.9	434.0	406.0	27.99	15.503	
5,400.0	5,352.7	5,367.4	5,256.4	16.6	21.9	31.79	-961.5	262.1	434.3	406.3	28.01	15.503	
5,500.0	5,451.8	5,466.9	5,353.0	16.8	22.5	31.84	-984.0	268.4	444.9	416.3	28.53	15.592	
5,600.0	5,551.2	5,565.9	5,449.3	17.0	23.0	31.70	-1,006.4	274.7	458.4	429.4	28.97	15.820	
5,700.0	5,651.0	5,664.5	5,545.1	17.2	23.4	31.38	-1,028.7	281.0	474.8	445.5	29.34	16.182	
5,800.0	5,750.9	5,765.2	5,643.0	17.4	23.9	30.90	-1,051.5	287.4	494.2	464.6	29.64	16.675	

Company:	Captiva Energy Partners	Local Co-ordinate Reference:	Well Stillroven Farm 7
Project:	SEC.5-T3N-R68W	TVD Reference:	WELL @ 5098.0ft (Original Well Elev)
Reference Site:	Stillroven Farm Pad Sec.5-T3N-R68W	MD Reference:	WELL @ 5098.0ft (Original Well Elev)
Site Error:	0.0 ft	North Reference:	True
Reference Well:	Stillroven Farm 7	Survey Calculation Method:	Minimum Curvature
Well Error:	0.0 ft	Output errors are at	2.00 sigma
Reference Wellbore	Wellbore #1	Database:	US_EDM
Reference Design:	Plan #2 (6-5-17)	Offset TVD Reference:	Offset Datum

Reference Depths are relative to WELL @ 5098.0ft (Original Well Elev)

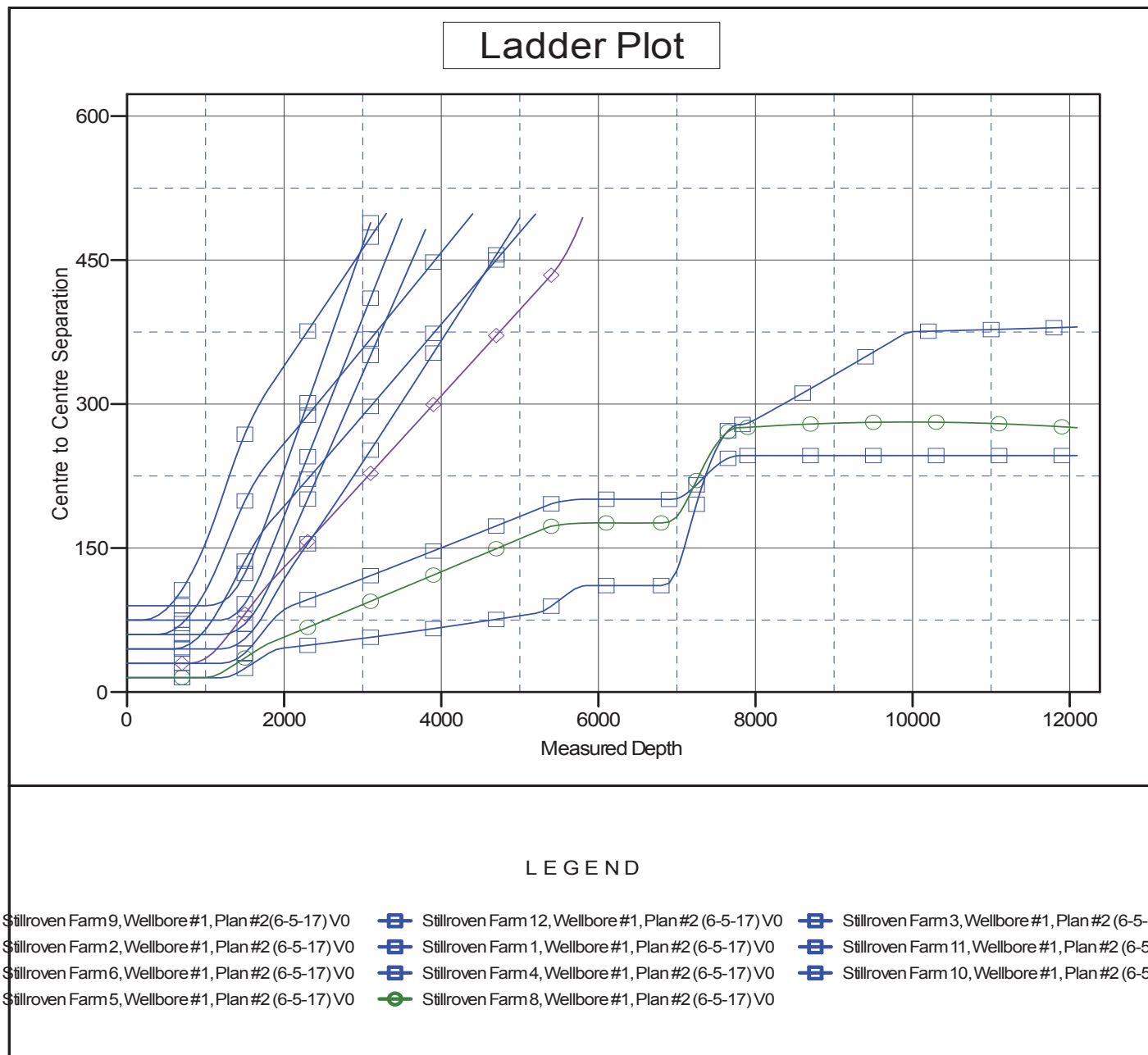
Offset Depths are relative to Offset Datum

Central Meridian is -105.500000

Coordinates are relative to: Stillroven Farm 7

Coordinate System is US State Plane 1983, Colorado Northern Zone

Grid Convergence at Surface is: 0.31°



Company:	Captiva Energy Partners	Local Co-ordinate Reference:	Well Stillroven Farm 7
Project:	SEC.5-T3N-R68W	TVD Reference:	WELL @ 5098.0ft (Original Well Elev)
Reference Site:	Stillroven Farm Pad Sec.5-T3N-R68W	MD Reference:	WELL @ 5098.0ft (Original Well Elev)
Site Error:	0.0 ft	North Reference:	True
Reference Well:	Stillroven Farm 7	Survey Calculation Method:	Minimum Curvature
Well Error:	0.0 ft	Output errors are at	2.00 sigma
Reference Wellbore	Wellbore #1	Database:	US_EDM
Reference Design:	Plan #2 (6-5-17)	Offset TVD Reference:	Offset Datum

Reference Depths are relative to WELL @ 5098.0ft (Original Well Elev)
Offset Depths are relative to Offset Datum
Central Meridian is -105.500000

Coordinates are relative to: Stillroven Farm 7
Coordinate System is US State Plane 1983, Colorado Northern Zone
Grid Convergence at Surface is: 0.31°

