

T4N, R62W, 6th P.M.

BILL BARRETT CORPORATION

ANCHUTZ EQUUS FARMS 4-62-33\_34 SWNW PAD  
#4-62-33-1724C  
SW 1/4 NW 1/4, SECTION 33, T4N, R62W, 6th P.M.  
WELD COUNTY, COLORADO

BASIS OF BEARINGS

BASIS OF BEARINGS IS A G.P.S. OBSERVATION

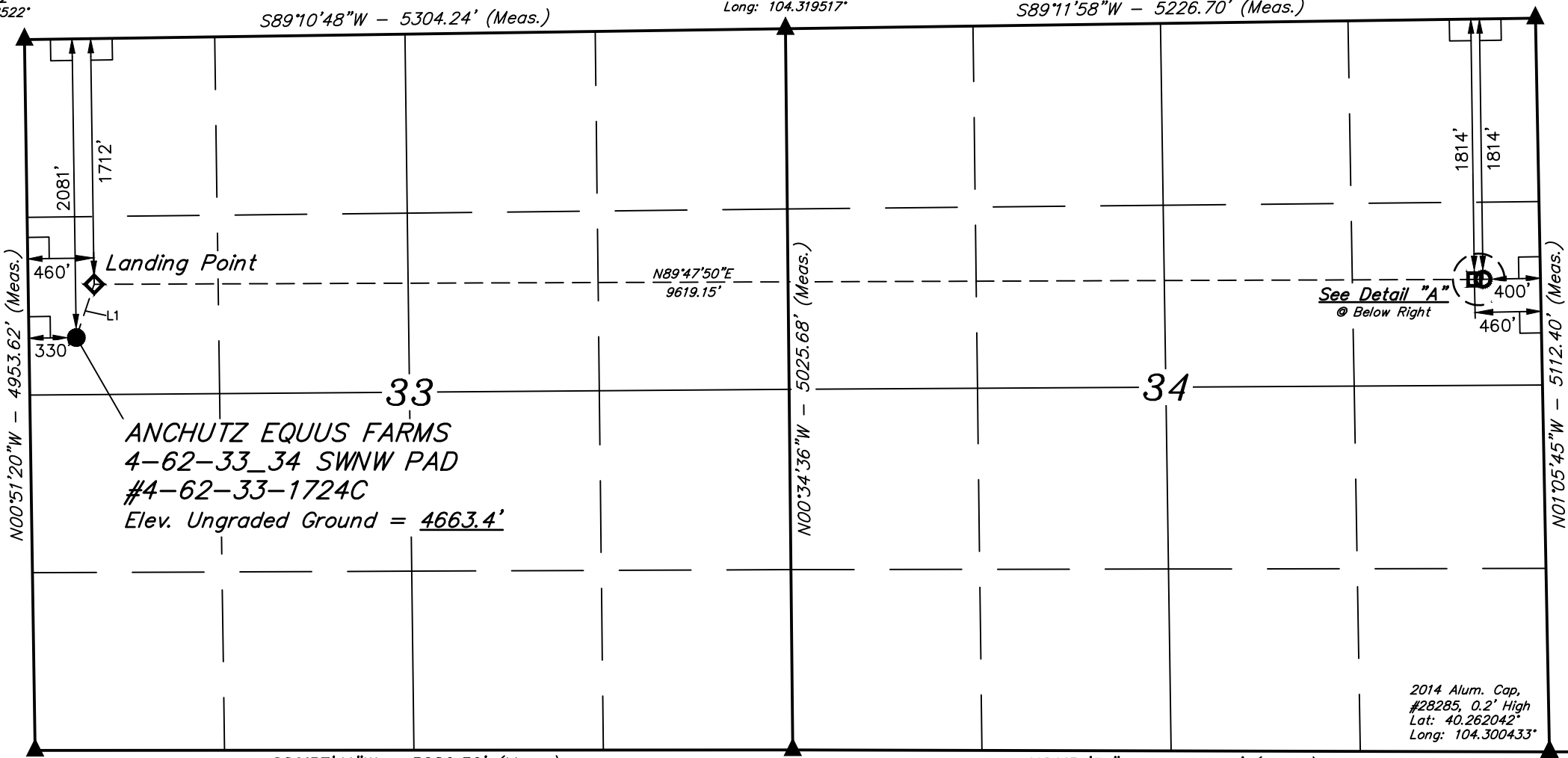
BASIS OF ELEVATION

BENCH MARK (M67) LOCATED IN THE SW 1/4 OF SECTION 9, T5S, R4W, U.S.B.&M., TAKEN FROM THE DUCHESNE SE, QUADRANGLE, UTAH, DUCHESNE COUNTY, 7.5 MINUTE QUAD. (TOPOGRAPHIC MAP) PUBLISHED BY THE UNITED STATES DEPARTMENT OF THE INTERIOR, GEOLOGICAL SURVEY. SAID ELEVATION IS MARKED AS BEING 6097 FEET.

2014 Alum. Cap,  
#28285, 0.4' High,  
in Line With East Fence  
Lat: 40.275642°  
Long: 104.338522°

2011 Alum. Cap,  
#17492, 0.4' High  
Lat: 40.275861°  
Long: 104.319517°

2011 Alum. Cap,  
#17492, 0.3' High  
Lat: 40.276069°  
Long: 104.300792°



1994 Alum. Cap,  
#23501, 0.1' High  
E-W Fence  
Lat: 40.262047°  
Long: 104.338242°

2014 Alum. Cap,  
#28285, Flush w/  
Ground  
Lat: 40.262069°  
Long: 104.319325°

2014 Alum. Cap,  
#28285, 0.2' High  
Lat: 40.262042°  
Long: 104.300433°

LINE TABLE

LINE	DIRECTION	LENGTH
L1	N18°33'10"E	391.21'
L2	S89°11'58"W	60.00'

LEGEND:

- 90° SYMBOL
- PROPOSED WELLHEAD.
- LANDING POINT.
- BOTTOM OF COMPLETED INTERVAL.
- TARGET BOTTOM HOLE TD.
- SECTION CORNERS LOCATED. (NAD 83)

NAD 83 (SURFACE LOCATION)	NAD 83 (LANDING POINT)	NAD 83 (BTM. OF COMPLETED INT.)	NAD 83 (TARGET BOTTOM HOLE TD)
LATITUDE = 40°16'11.80" (40.269944) LONGITUDE = 104°20'14.00" (104.337222)	LATITUDE = 40°16'15.46" (40.270961) LONGITUDE = 104°20'12.39" (104.336775)	LATITUDE = 40°16'15.86" (40.271072) LONGITUDE = 104°18'08.33" (104.302314)	LATITUDE = 40°16'15.87" (40.271075) LONGITUDE = 104°18'07.55" (104.302097)
NAD 27 (SURFACE LOCATION)	NAD 27 (LANDING POINT)	NAD 27 (BTM. OF COMPLETED INT.)	NAD 27 (TARGET BOTTOM HOLE TD)
LATITUDE = 40°16'11.87" (40.269964) LONGITUDE = 104°20'12.17" (104.336714)	LATITUDE = 40°16'15.53" (40.270981) LONGITUDE = 104°20'10.56" (104.336267)	LATITUDE = 40°16'15.93" (40.271092) LONGITUDE = 104°18'06.50" (104.301806)	LATITUDE = 40°16'15.94" (40.271094) LONGITUDE = 104°18'05.73" (104.301592)
STATE PLANE NAD 83 (CO. NORTH)	STATE PLANE NAD 83 (CO. NORTH)	STATE PLANE NAD 83 (CO. NORTH)	STATE PLANE NAD 83 (CO. NORTH)
N: 1343309.37 E: 3324457.95	N: 1343681.85 E: 3324577.20	N: 1343850.17 E: 3334192.35	N: 1343851.84 E: 3334252.31
STATE PLANE NAD 27 (CO. NORTH)	STATE PLANE NAD 27 (CO. NORTH)	STATE PLANE NAD 27 (CO. NORTH)	STATE PLANE NAD 27 (CO. NORTH)
N: 343312.12 E: 2324608.31	N: 343684.60 E: 2324727.56	N: 343852.99 E: 2334342.71	N: 343854.66 E: 2334402.67

PDOP = 1.4

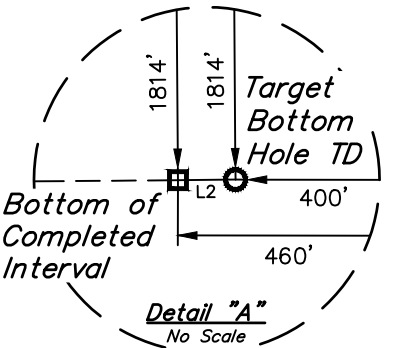
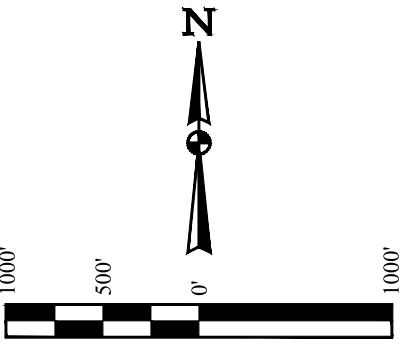
REV: 3 06-13-17 D.COX (LP & BHL CHANGE)



UELS, LLC  
Corporate Office \* 85 South 200 East  
Vernal, UT 84078 \* (435) 789-1017

SURVEYED BY	DALLAS NIELSEN, N.P.	12-20-16	SCALE
DRAWN BY	C.C.	01-17-17	1" = 1000'

WELL LOCATION PLAT



CERTIFICATE  
THIS IS TO CERTIFY THAT THE ABOVE PLAT WAS PREPARED FROM FIELD NOTES OF ACTUAL SURVEYS MADE BY ME OR UNDER MY SUPERVISION, AND THAT THE SAME ARE TRUE AND CORRECT TO THE BEST OF MY KNOWLEDGE AND BELIEF.

REGISTERED LAND SURVEYOR  
REGISTRATION NO. 28285  
STATE OF COLORADO