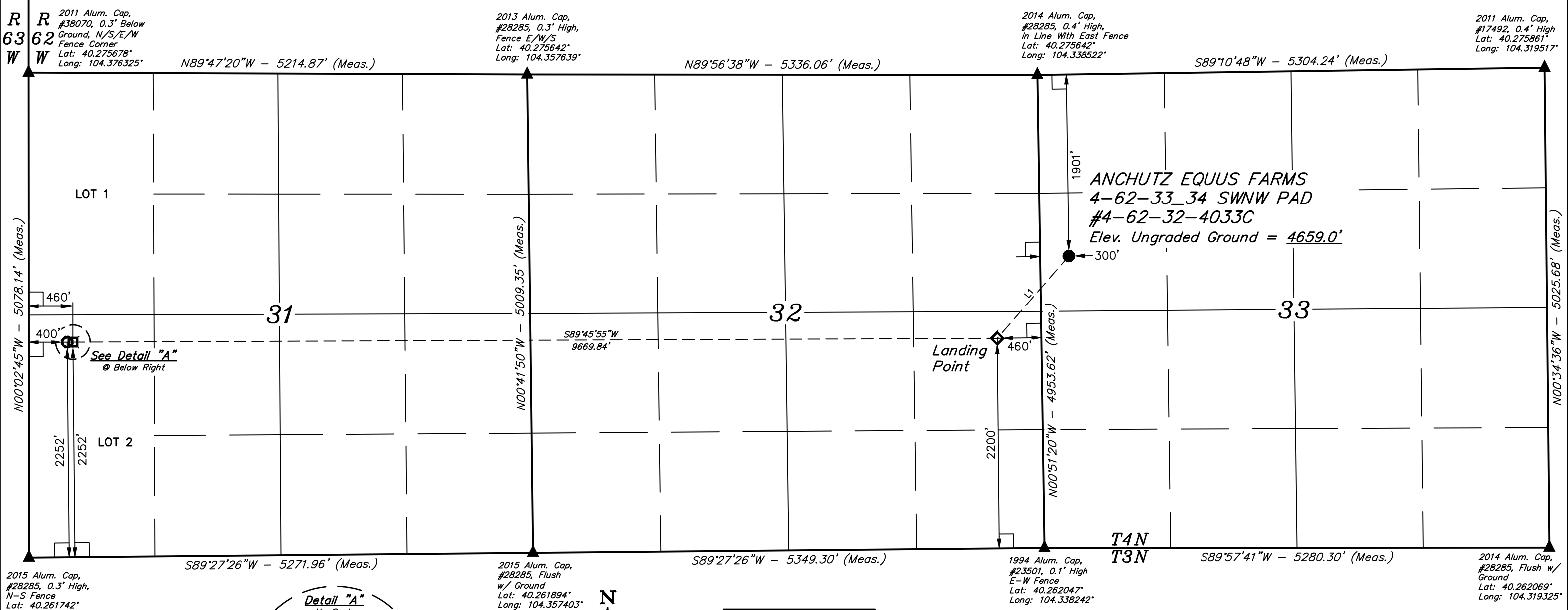


T4N, R62W, 6th P.M.

BILL BARRETT CORPORATION

ANCHUTZ EQUUS FARMS 4-62-33_34 SWNW PAD
#4-62-32-4033C
SW 1/4 NW 1/4, SECTION 33, T4N, R62W, 6th P.M.
WELD COUNTY, COLORADO



2015 Alum. Cap,
#28285, 0.3' High,
N-S Fence
Lat: 40.261742°
Long: 104.376286°

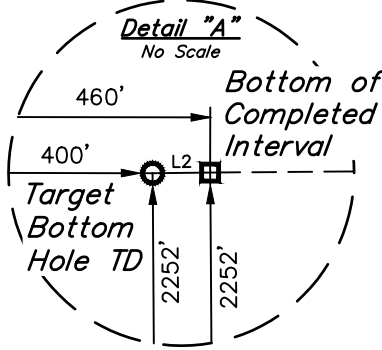
2015 Alum. Cap,
#28285, Flush
w/ Ground
Lat: 40.261894°
Long: 104.357403°

1994 Alum. Cap,
#23501, 0.1' High
E-W Fence
Lat: 40.262047°
Long: 104.338242°

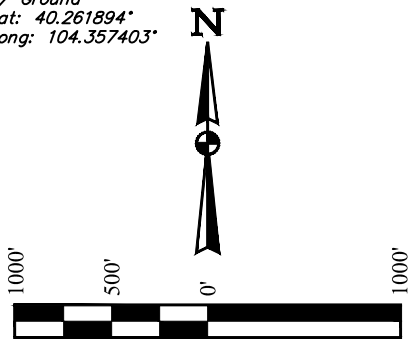
2014 Alum. Cap,
#28285, Flush w/
Ground
Lat: 40.262069°
Long: 104.319325°

LEGEND:

- 90° SYMBOL
- PROPOSED WELLHEAD.
- LANDING POINT.
- BOTTOM OF COMPLETED INTERVAL.
- TARGET BOTTOM HOLE TD.
- SECTION CORNERS LOCATED. (NAD 83)



LINE TABLE		
LINE	DIRECTION	LENGTH
L1	S40°57'00"W	1140.14'
L2	S89°27'26"W	60.00'



PDOP = 1.4

NAD 83 (SURFACE LOCATION)	NAD 83 (LANDING POINT)	NAD 83 (BTM. OF COMPLETED INT.)	NAD 83 (TARGET BOTTOM HOLE TD)
LATITUDE = 40°16'13.57" (40.270436) LONGITUDE = 104°20'14.42" (104.337339)	LATITUDE = 40°16'05.06" (40.268072) LONGITUDE = 104°20'24.05" (104.340014)	LATITUDE = 40°16'04.56" (40.267933) LONGITUDE = 104°22'28.76" (104.374656)	LATITUDE = 40°16'04.56" (40.267933) LONGITUDE = 104°22'29.54" (104.374872)
NAD 27 (SURFACE LOCATION)	NAD 27 (LANDING POINT)	NAD 27 (BTM. OF COMPLETED INT.)	NAD 27 (TARGET BOTTOM HOLE TD)
LATITUDE = 40°16'13.64" (40.270456) LONGITUDE = 104°20'12.59" (104.336831)	LATITUDE = 40°16'05.13" (40.268092) LONGITUDE = 104°20'22.22" (104.339506)	LATITUDE = 40°16'04.63" (40.267953) LONGITUDE = 104°22'26.93" (104.374147)	LATITUDE = 40°16'04.63" (40.267953) LONGITUDE = 104°22'27.70" (104.374361)
STATE PLANE NAD 83 (CO. NORTH)	STATE PLANE NAD 83 (CO. NORTH)	STATE PLANE NAD 83 (CO. NORTH)	STATE PLANE NAD 83 (CO. NORTH)
N: 1343488.44 E: 3324422.78	N: 1342617.19 E: 3323687.83	N: 1342442.60 E: 3314022.11	N: 1342441.20 E: 3313962.14
STATE PLANE NAD 27 (CO. NORTH)	STATE PLANE NAD 27 (CO. NORTH)	STATE PLANE NAD 27 (CO. NORTH)	STATE PLANE NAD 27 (CO. NORTH)
N: 343491.19 E: 2324573.15	N: 342619.96 E: 2323838.20	N: 342445.29 E: 2314172.48	N: 342443.89 E: 2314112.51

THIS IS TO CERTIFY THAT THE ABOVE PLAT WAS PREPARED FROM FIELD NOTES OF ACTUAL SURVEYS MADE BY ME OR UNDER MY SUPERVISION, AND THAT THE SAME ARE TRUE AND CORRECT TO THE BEST OF MY KNOWLEDGE AND BELIEF.



BASIS OF BEARINGS

BASIS OF BEARINGS IS A G.P.S. OBSERVATION

BASIS OF ELEVATION

SPOT ELEVATION LOCATED AT THE NORTHEAST CORNER OF SECTION 24, T5N, R62W, 6th P.M. TAKEN FROM THE POINT OF ROCKS, QUADRANGLE, COLORADO, WELD COUNTY, 7.5 MINUTE QUAD (TOPOGRAPHIC MAP) PUBLISHED BY THE UNITED STATES DEPARTMENT OF THE INTERIOR, GEOLOGICAL SURVEY. SAID ELEVATION IS MARKED AS BEING 4530 FEET.

REV: 3 06-13-17 D.COX (LP & BHL CHANGE)



UELS, LLC
Corporate Office * 85 South 200 East
Vernal, UT 84078 * (435) 789-1017

SURVEYED BY	DALLAS NIELSEN, N.P.	12-20-16	SCALE
DRAWN BY	C.C.	01-17-17	1" = 1000'

WELL LOCATION PLAT