

# **BISON OIL & GAS II, LLC**

**WELD COUNTY, COLORADO (NAD 83)**

**NW NE SEC. 27 T9N R60 W 6th P.M.**

**BASHOR 9-60 27B-34-7**

**ORIGINAL WELLBORE**

**03 July, 2017**

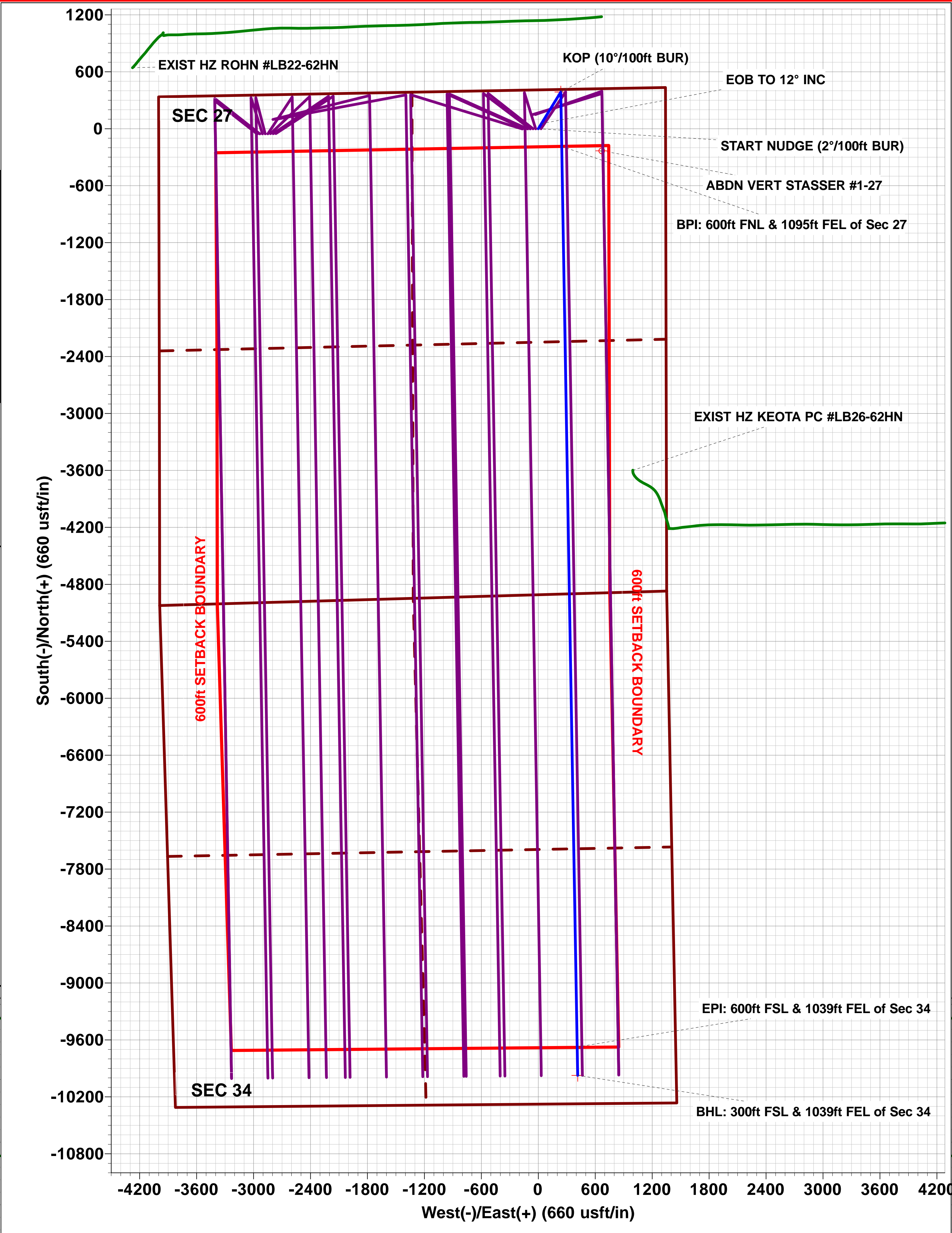
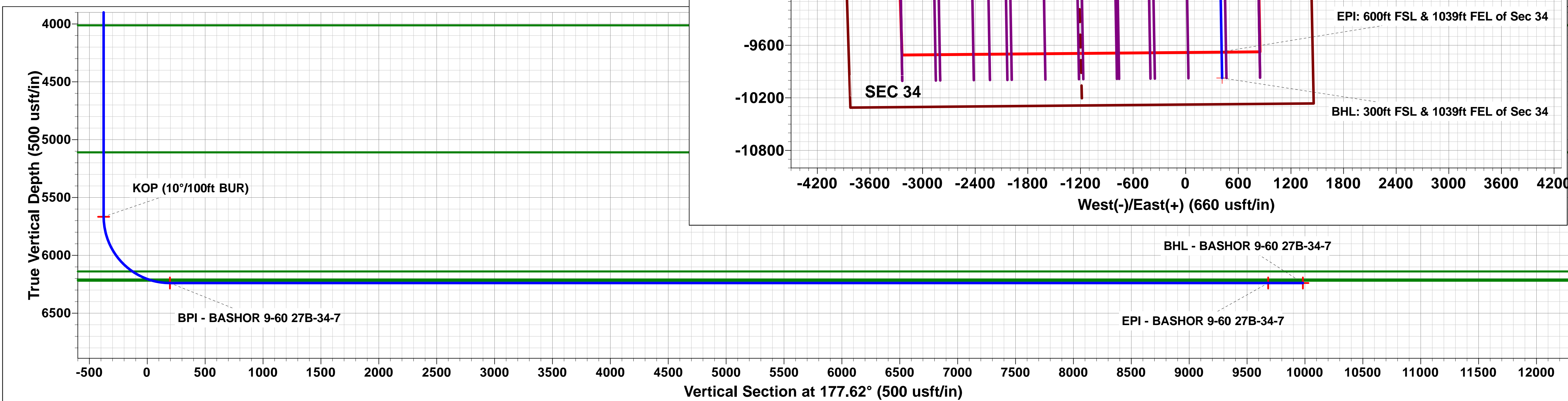
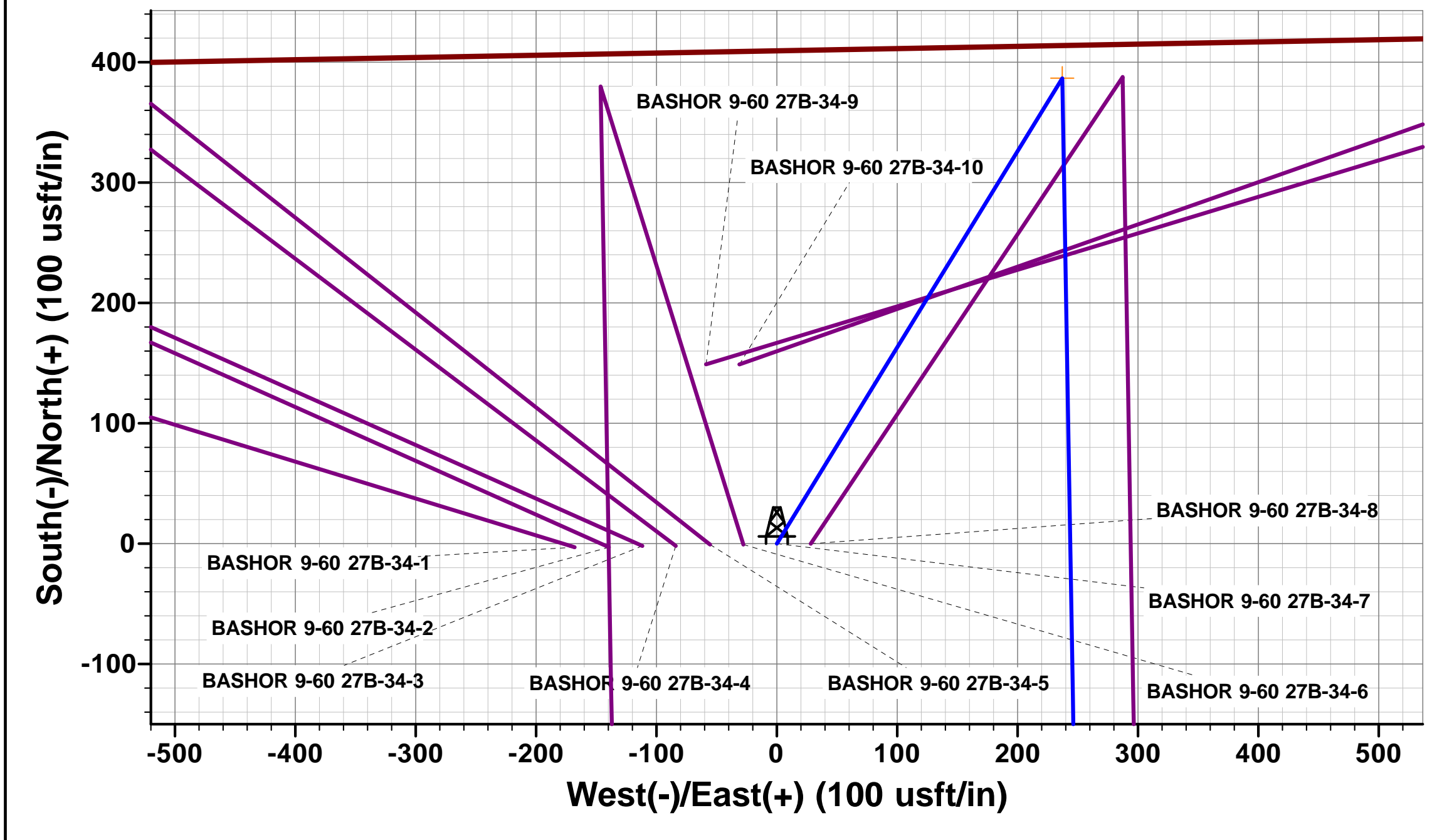
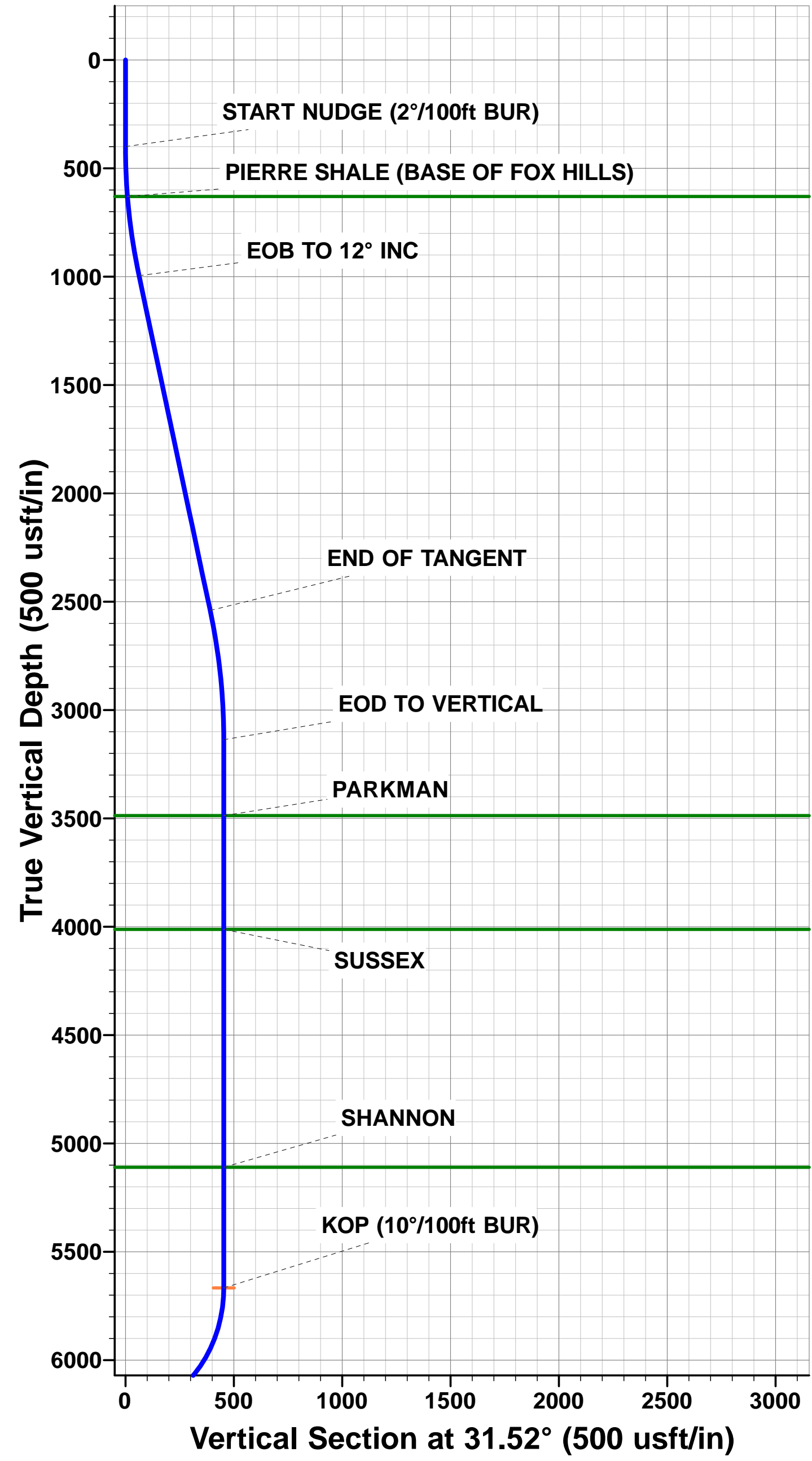
**Plan: PROPOSAL #1**





Project: WELD COUNTY, COLORADO (NAD 83)  
Site: NW NE SEC. 27 T9N R60 W 6th P.M.  
Well: BASHOR 9-60 27B-34-7  
Wellbore: ORIGINAL WELLBORE  
Design: PROPOSAL #1

ANNOTATIONS										PROPOSED LOCAL COORDINATES:  SHL: 410ft FNL & 1341ft FEL Sec 27  BPI: 600ft FNL & 1095ft FEL Sec 27  EPI: 600ft FSL & 1039ft FEL Sec 34  BHL: 300ft FSL & 1039ft FEL of Sec 34
TVD	MD	Inc	Azi	+N/-S	+E/-W	VSect	Dep	Annotation		
0.0	0.0	0.00	0.00	0.0	0.0	0.0	0.0	SHL: 410ft FNL & 1341ft FEL of Sec 27		
400.0	400.0	0.00	0.00	0.0	0.0	0.0	0.0	START NUDGE (2"/100ft BUR)		
995.6	1000.0	12.00	31.52	53.4	32.7	-52.0	62.6	EOB TO 12° INC		
2540.9	2579.8	12.00	31.52	333.3	204.5	-324.5	391.1	END OF TANGENT		
3136.5	3179.8	0.00	0.00	386.7	237.2	-376.5	453.7	EOD TO VERTICAL		
5666.5	5709.8	0.00	0.00	386.7	237.2	-376.5	453.7	KOP (10°/100ft BUR)		
6239.4	6609.7	90.00	179.02	-186.2	247.0	196.3	1026.6	BPI: 600ft FNL & 1095ft FEL of Sec 27		
6239.4	16098.7	90.00	179.01	-9673.7	409.5	9682.4	10515.5	EPI: 600ft FSL & 1039ft FEL of Sec 34		
6239.4	16398.5	90.00	178.87	-9973.5	415.1	9982.2	10815.4	BHL: 300ft FSL & 1039ft FEL of Sec 34		
WELLBORE TARGET DETAILS (LAT/LONG)										
Name					TVD	+N/-S	+E/-W	Latitude	Longitude	
KOP - BASHOR 9-60 27B-34-7					5666.5	386.7	237.2	40.728305	-104.072738	
BHL - BASHOR 9-60 27B-34-7					6239.4	-9973.5	415.1	40.699869	-104.072097	
BPI - BASHOR 9-60 27B-34-7					6239.4	-186.2	247.0	40.726733	-104.072703	
EPI - BASHOR 9-60 27B-34-7					6239.4	-9673.7	409.5	40.700692	-104.072117	



# Planning Report



<b>Database:</b>	EDM 5000.1 Single User Db	<b>Local Co-ordinate Reference:</b>	Well BASHOR 9-60 27B-34-7
<b>Company:</b>	BISON OIL & GAS II, LLC	<b>TVD Reference:</b>	KB-EST @ 5015.4usft (Original Well Elev)
<b>Project:</b>	WELD COUNTY, COLORADO (NAD 83)	<b>MD Reference:</b>	KB-EST @ 5015.4usft (Original Well Elev)
<b>Site:</b>	NW NE SEC. 27 T9N R60 W 6th P.M.	<b>North Reference:</b>	True
<b>Well:</b>	BASHOR 9-60 27B-34-7	<b>Survey Calculation Method:</b>	Minimum Curvature
<b>Wellbore:</b>	ORIGINAL WELLBORE		
<b>Design:</b>	PROPOSAL #1		

<b>Project</b>	WELD COUNTY, COLORADO (NAD 83)		
<b>Map System:</b>	US State Plane 1983	<b>System Datum:</b>	Mean Sea Level
<b>Geo Datum:</b>	North American Datum 1983		
<b>Map Zone:</b>	Colorado Northern Zone		Using geodetic scale factor

<b>Site</b>	NW NE SEC. 27 T9N R60 W 6th P.M.		
<b>Site Position:</b>		<b>Northing:</b>	1,510,953.37 usft
<b>From:</b>	Lat/Long	<b>Easting:</b>	3,395,166.17 usft
<b>Position Uncertainty:</b>	0.0 usft	<b>Slot Radius:</b>	1.10000ft
		<b>Latitude:</b>	40.727236
		<b>Longitude:</b>	-104.074200
		<b>Grid Convergence:</b>	0.92 °

<b>Well</b>	BASHOR 9-60 27B-34-7		
<b>Well Position</b>	<b>+N/-S</b>	2.9 usft	<b>Northing:</b>
	<b>+E/-W</b>	168.0 usft	<b>Easting:</b>
<b>Position Uncertainty</b>	0.0 usft		<b>Wellhead Elevation:</b>
			<b>Latitude:</b>
			<b>Longitude:</b>
			<b>Ground Level:</b>

<b>Wellbore</b>	ORIGINAL WELLBORE				
<b>Magnetics</b>	<b>Model Name</b>	<b>Sample Date</b>	<b>Declination (°)</b>	<b>Dip Angle (°)</b>	<b>Field Strength (nT)</b>
	IGRF2015	03/07/2017	7.86	67.22	52,625

<b>Design</b>	PROPOSAL #1			
<b>Audit Notes:</b>				
<b>Version:</b>	<b>Phase:</b>	PROTOTYPE	<b>Tie On Depth:</b>	0.0
<b>Vertical Section:</b>	<b>Depth From (TVD) (usft)</b>	<b>+N/-S (usft)</b>	<b>+E/-W (usft)</b>	<b>Direction (°)</b>
	6,239.4	0.0	0.0	177.62

<b>Plan Sections</b>											
MD (usft)	Inc (°)	Azi (°)	Vertical Depth	SS (usft)	+N/-S (usft)	+E/-W (usft)	Dogleg Rate (°/100usft)	Build Rate (°/100usft)	Turn Rate (°/100usft)	TFO (°)	Target
0.0	0.00	0.00	0.0	-5,015.4	0.0	0.0	0.00	0.00	0.00	0.00	
400.0	0.00	0.00	400.0	-4,615.4	0.0	0.0	0.00	0.00	0.00	0.00	
1,000.0	12.00	31.52	995.6	-4,019.8	53.4	32.7	2.00	2.00	0.00	31.52	
2,579.8	12.00	31.52	2,540.9	-2,474.5	333.3	204.5	0.00	0.00	0.00	0.00	
3,179.8	0.00	0.00	3,136.5	-1,878.9	386.7	237.2	2.00	-2.00	0.00	180.00	
5,709.8	0.00	0.00	5,666.5	651.1	386.7	237.2	0.00	0.00	0.00	0.00	KOP - BASHOR 9-60
6,609.7	90.00	179.02	6,239.4	1,224.0	-186.2	247.0	10.00	10.00	19.89	179.02	BPI - BASHOR 9-60
16,098.7	90.00	179.01	6,239.4	1,224.0	-9,673.7	409.5	0.00	0.00	0.00	-129.44	EPI - BASHOR 9-60
16,398.5	90.00	178.87	6,239.4	1,224.0	-9,973.5	415.1	0.05	0.00	-0.05	-86.27	BHL - BASHOR 9-60

# Planning Report



<b>Database:</b>	EDM 5000.1 Single User Db	<b>Local Co-ordinate Reference:</b>	Well BASHOR 9-60 27B-34-7
<b>Company:</b>	BISON OIL & GAS II, LLC	<b>TVD Reference:</b>	KB-EST @ 5015.4usft (Original Well Elev)
<b>Project:</b>	WELD COUNTY, COLORADO (NAD 83)	<b>MD Reference:</b>	KB-EST @ 5015.4usft (Original Well Elev)
<b>Site:</b>	NW NE SEC. 27 T9N R60 W 6th P.M.	<b>North Reference:</b>	True
<b>Well:</b>	BASHOR 9-60 27B-34-7	<b>Survey Calculation Method:</b>	Minimum Curvature
<b>Wellbore:</b>	ORIGINAL WELLBORE		
<b>Design:</b>	PROPOSAL #1		

## Planned Survey

MD (usft)	Inc (°)	Azi (°)	TVD (usft)	SS (usft)	+N/-S (usft)	+E/-W (usft)	Vertical Section (usft)	Dogleg Rate (°/100usft)	Build Rate (°/100usft)	Turn Rate (°/100usft)
<b>SHL: 410ft FNL &amp; 1341ft FEL of Sec 27</b>										
0.0	0.00	0.00	0.0	5,015.40	0.0	0.0	0.0	0.00	0.00	0.00
100.0	0.00	0.00	100.0	4,915.40	0.0	0.0	0.0	0.00	0.00	0.00
200.0	0.00	0.00	200.0	4,815.40	0.0	0.0	0.0	0.00	0.00	0.00
300.0	0.00	0.00	300.0	4,715.40	0.0	0.0	0.0	0.00	0.00	0.00
<b>START NUDGE (2°/100ft BUR)</b>										
400.0	0.00	0.00	400.0	4,615.40	0.0	0.0	0.0	0.00	0.00	0.00
500.0	2.00	31.52	500.0	4,515.42	1.5	0.9	-1.4	2.00	2.00	0.00
600.0	4.00	31.52	599.8	4,415.56	5.9	3.6	-5.8	2.00	2.00	0.00
<b>PIERRE SHALE (BASE OF FOX HILLS)</b>										
630.6	4.61	31.52	630.4	4,385.00	7.9	4.9	-7.7	2.00	2.00	0.00
700.0	6.00	31.52	699.5	4,315.95	13.4	8.2	-13.0	2.00	2.00	0.00
800.0	8.00	31.52	798.7	4,216.70	23.8	14.6	-23.1	2.00	2.00	0.00
900.0	10.00	31.52	897.5	4,117.93	37.1	22.8	-36.1	2.00	2.00	0.00
<b>EOB TO 12° INC</b>										
1,000.0	12.00	31.52	995.6	4,019.79	53.4	32.7	-52.0	2.00	2.00	0.00
1,100.0	12.00	31.52	1,093.4	3,921.96	71.1	43.6	-69.2	0.00	0.00	0.00
1,200.0	12.00	31.52	1,191.3	3,824.15	88.8	54.5	-86.5	0.00	0.00	0.00
1,300.0	12.00	31.52	1,289.1	3,726.33	106.5	65.3	-103.7	0.00	0.00	0.00
1,400.0	12.00	31.52	1,386.9	3,628.52	124.3	76.2	-121.0	0.00	0.00	0.00
1,500.0	12.00	31.52	1,484.7	3,530.70	142.0	87.1	-138.2	0.00	0.00	0.00
1,600.0	12.00	31.52	1,582.5	3,432.89	159.7	98.0	-155.5	0.00	0.00	0.00
1,700.0	12.00	31.52	1,680.3	3,335.07	177.4	108.8	-172.7	0.00	0.00	0.00
1,800.0	12.00	31.52	1,778.1	3,237.26	195.1	119.7	-190.0	0.00	0.00	0.00
1,900.0	12.00	31.52	1,876.0	3,139.44	212.9	130.6	-207.3	0.00	0.00	0.00
2,000.0	12.00	31.52	1,973.8	3,041.63	230.6	141.4	-224.5	0.00	0.00	0.00
2,100.0	12.00	31.52	2,071.6	2,943.81	248.3	152.3	-241.8	0.00	0.00	0.00
2,200.0	12.00	31.52	2,169.4	2,846.00	266.0	163.2	-259.0	0.00	0.00	0.00
2,300.0	12.00	31.52	2,267.2	2,748.18	283.8	174.1	-276.3	0.00	0.00	0.00
2,400.0	12.00	31.52	2,365.0	2,650.37	301.5	184.9	-293.5	0.00	0.00	0.00
2,500.0	12.00	31.52	2,462.8	2,552.55	319.2	195.8	-310.8	0.00	0.00	0.00
<b>END OF TANGENT</b>										
2,579.8	12.00	31.52	2,540.9	2,474.51	333.3	204.5	-324.5	0.00	0.00	0.00
2,600.0	11.60	31.52	2,560.7	2,454.72	336.9	206.6	-328.0	2.00	-2.00	0.00
2,700.0	9.60	31.52	2,659.0	2,356.43	352.5	216.2	-343.2	2.00	-2.00	0.00
2,800.0	7.60	31.52	2,757.8	2,257.56	365.3	224.1	-355.6	2.00	-2.00	0.00
2,900.0	5.60	31.52	2,857.2	2,158.23	375.1	230.1	-365.2	2.00	-2.00	0.00
3,000.0	3.60	31.52	2,956.8	2,058.56	381.9	234.3	-371.8	2.00	-2.00	0.00
3,100.0	1.60	31.52	3,056.7	1,958.66	385.8	236.6	-375.6	2.00	-2.00	0.00
<b>EOD TO VERTICAL</b>										
3,179.8	0.00	0.00	3,136.5	1,878.90	386.7	237.2	-376.5	2.00	-2.00	0.00
3,200.0	0.00	0.00	3,156.7	1,858.67	386.7	237.2	-376.5	0.00	0.00	0.00
3,300.0	0.00	0.00	3,256.7	1,758.67	386.7	237.2	-376.5	0.00	0.00	0.00
3,400.0	0.00	0.00	3,356.7	1,658.67	386.7	237.2	-376.5	0.00	0.00	0.00
3,500.0	0.00	0.00	3,456.7	1,558.67	386.7	237.2	-376.5	0.00	0.00	0.00
<b>PARKMAN</b>										
3,530.7	0.00	0.00	3,487.4	1,528.00	386.7	237.2	-376.5	0.00	0.00	0.00
3,600.0	0.00	0.00	3,556.7	1,458.67	386.7	237.2	-376.5	0.00	0.00	0.00
3,700.0	0.00	0.00	3,656.7	1,358.67	386.7	237.2	-376.5	0.00	0.00	0.00
3,800.0	0.00	0.00	3,756.7	1,258.67	386.7	237.2	-376.5	0.00	0.00	0.00
3,900.0	0.00	0.00	3,856.7	1,158.67	386.7	237.2	-376.5	0.00	0.00	0.00
4,000.0	0.00	0.00	3,956.7	1,058.67	386.7	237.2	-376.5	0.00	0.00	0.00
<b>SUSSEX</b>										



# Planning Report



<b>Database:</b>	EDM 5000.1 Single User Db	<b>Local Co-ordinate Reference:</b>	Well BASHOR 9-60 27B-34-7
<b>Company:</b>	BISON OIL & GAS II, LLC	<b>TVD Reference:</b>	KB-EST @ 5015.4usft (Original Well Elev)
<b>Project:</b>	WELD COUNTY, COLORADO (NAD 83)	<b>MD Reference:</b>	KB-EST @ 5015.4usft (Original Well Elev)
<b>Site:</b>	NW NE SEC. 27 T9N R60 W 6th P.M.	<b>North Reference:</b>	True
<b>Well:</b>	BASHOR 9-60 27B-34-7	<b>Survey Calculation Method:</b>	Minimum Curvature
<b>Wellbore:</b>	ORIGINAL WELLBORE		
<b>Design:</b>	PROPOSAL #1		

## Planned Survey

MD (usft)	Inc (°)	Azi (°)	TVD (usft)	SS (usft)	+N/-S (usft)	+E/-W (usft)	Vertical Section (usft)	Dogleg Rate (°/100usft)	Build Rate (°/100usft)	Turn Rate (°/100usft)
4,055.7	0.00	0.00	4,012.4	1,003.00	386.7	237.2	-376.5	0.00	0.00	0.00
4,100.0	0.00	0.00	4,056.7	958.67	386.7	237.2	-376.5	0.00	0.00	0.00
4,200.0	0.00	0.00	4,156.7	858.67	386.7	237.2	-376.5	0.00	0.00	0.00
4,300.0	0.00	0.00	4,256.7	758.67	386.7	237.2	-376.5	0.00	0.00	0.00
4,400.0	0.00	0.00	4,356.7	658.67	386.7	237.2	-376.5	0.00	0.00	0.00
4,500.0	0.00	0.00	4,456.7	558.67	386.7	237.2	-376.5	0.00	0.00	0.00
4,600.0	0.00	0.00	4,556.7	458.67	386.7	237.2	-376.5	0.00	0.00	0.00
4,700.0	0.00	0.00	4,656.7	358.67	386.7	237.2	-376.5	0.00	0.00	0.00
4,800.0	0.00	0.00	4,756.7	258.67	386.7	237.2	-376.5	0.00	0.00	0.00
4,900.0	0.00	0.00	4,856.7	158.67	386.7	237.2	-376.5	0.00	0.00	0.00
5,000.0	0.00	0.00	4,956.7	58.67	386.7	237.2	-376.5	0.00	0.00	0.00
5,100.0	0.00	0.00	5,056.7	-41.33	386.7	237.2	-376.5	0.00	0.00	0.00
<b>SHANNON</b>										
5,153.7	0.00	0.00	5,110.4	-95.00	386.7	237.2	-376.5	0.00	0.00	0.00
5,200.0	0.00	0.00	5,156.7	-141.33	386.7	237.2	-376.5	0.00	0.00	0.00
5,300.0	0.00	0.00	5,256.7	-241.33	386.7	237.2	-376.5	0.00	0.00	0.00
5,400.0	0.00	0.00	5,356.7	-341.33	386.7	237.2	-376.5	0.00	0.00	0.00
5,500.0	0.00	0.00	5,456.7	-441.33	386.7	237.2	-376.5	0.00	0.00	0.00
5,600.0	0.00	0.00	5,556.7	-541.33	386.7	237.2	-376.5	0.00	0.00	0.00
5,700.0	0.00	0.00	5,656.7	-641.33	386.7	237.2	-376.5	0.00	0.00	0.00
<b>KOP (10°/100ft BUR)</b>										
5,709.8	0.00	0.00	5,666.5	-651.10	386.7	237.2	-376.5	0.00	0.00	0.00
5,800.0	9.02	179.02	5,756.4	-740.95	379.6	237.3	-369.4	10.00	10.00	0.00
5,900.0	19.02	179.02	5,853.2	-837.85	355.4	237.7	-345.2	10.00	10.00	0.00
6,000.0	29.03	179.02	5,944.5	-929.07	314.8	238.4	-304.6	10.00	10.00	0.00
6,100.0	39.03	179.02	6,027.2	-1,011.84	258.9	239.4	-248.7	10.00	10.00	0.00
6,200.0	49.03	179.02	6,099.1	-1,083.65	189.5	240.6	-179.3	10.00	10.00	0.00
<b>SHARON SPRINGS SHALE</b>										
6,266.1	55.63	179.02	6,139.4	-1,124.00	137.2	241.4	-127.1	10.00	10.00	0.00
6,300.0	59.03	179.02	6,157.7	-1,142.32	108.7	241.9	-98.5	10.00	10.00	0.00
6,400.0	69.03	179.02	6,201.5	-1,186.05	18.9	243.5	-8.7	10.00	10.00	0.00
<b>NIOBRARA FORMATION</b>										
6,423.5	71.38	179.02	6,209.4	-1,194.00	-3.2	243.8	13.3	10.00	10.00	0.00
<b>NIOBRARA A CHALK</b>										
6,457.9	74.82	179.02	6,219.4	-1,204.00	-36.1	244.4	46.2	10.00	10.00	0.00
6,500.0	79.03	179.02	6,228.9	-1,213.53	-77.1	245.1	87.2	10.00	10.00	0.00
6,600.0	89.03	179.02	6,239.3	-1,223.92	-176.4	246.8	186.5	10.00	10.00	0.00
<b>BPI: 600ft FNL &amp; 1095ft FEL of Sec 27</b>										
6,609.7	90.00	179.02	6,239.4	-1,224.00	-186.2	247.0	196.3	10.00	10.00	0.00
6,700.0	90.00	179.02	6,239.4	-1,223.99	-276.4	248.5	286.5	0.00	0.00	0.00
6,800.0	90.00	179.02	6,239.4	-1,223.98	-376.4	250.2	386.5	0.00	0.00	0.00
6,900.0	90.00	179.02	6,239.4	-1,223.98	-476.4	251.9	486.5	0.00	0.00	0.00
7,000.0	90.00	179.02	6,239.4	-1,223.97	-576.4	253.6	586.4	0.00	0.00	0.00
7,100.0	90.00	179.02	6,239.4	-1,223.96	-676.4	255.3	686.4	0.00	0.00	0.00
7,200.0	90.00	179.02	6,239.4	-1,223.95	-776.3	257.0	786.4	0.00	0.00	0.00
7,300.0	90.00	179.02	6,239.3	-1,223.95	-876.3	258.7	886.3	0.00	0.00	0.00
7,400.0	90.00	179.02	6,239.3	-1,223.94	-976.3	260.4	986.3	0.00	0.00	0.00
7,500.0	90.00	179.02	6,239.3	-1,223.93	-1,076.3	262.1	1,086.3	0.00	0.00	0.00
7,600.0	90.00	179.02	6,239.3	-1,223.93	-1,176.3	263.8	1,186.2	0.00	0.00	0.00
7,700.0	90.00	179.02	6,239.3	-1,223.92	-1,276.3	265.5	1,286.2	0.00	0.00	0.00
7,800.0	90.00	179.02	6,239.3	-1,223.91	-1,376.3	267.2	1,386.2	0.00	0.00	0.00
7,900.0	90.00	179.02	6,239.3	-1,223.91	-1,476.2	269.0	1,486.2	0.00	0.00	0.00
8,000.0	90.00	179.02	6,239.3	-1,223.90	-1,576.2	270.7	1,586.1	0.00	0.00	0.00

# Planning Report



<b>Database:</b>	EDM 5000.1 Single User Db	<b>Local Co-ordinate Reference:</b>	Well BASHOR 9-60 27B-34-7
<b>Company:</b>	BISON OIL & GAS II, LLC	<b>TVD Reference:</b>	KB-EST @ 5015.4usft (Original Well Elev)
<b>Project:</b>	WELD COUNTY, COLORADO (NAD 83)	<b>MD Reference:</b>	KB-EST @ 5015.4usft (Original Well Elev)
<b>Site:</b>	NW NE SEC. 27 T9N R60 W 6th P.M.	<b>North Reference:</b>	True
<b>Well:</b>	BASHOR 9-60 27B-34-7	<b>Survey Calculation Method:</b>	Minimum Curvature
<b>Wellbore:</b>	ORIGINAL WELLBORE		
<b>Design:</b>	PROPOSAL #1		

Planned Survey										
MD (usft)	Inc (°)	Azi (°)	TVD (usft)	SS (usft)	+N/-S (usft)	+E/-W (usft)	Vertical Section (usft)	Dogleg Rate (°/100usft)	Build Rate (°/100usft)	Turn Rate (°/100usft)
8,100.0	90.00	179.02	6,239.3	-1,223.90	-1,676.2	272.4	1,686.1	0.00	0.00	0.00
8,200.0	90.00	179.02	6,239.3	-1,223.89	-1,776.2	274.1	1,786.1	0.00	0.00	0.00
8,300.0	90.00	179.02	6,239.3	-1,223.88	-1,876.2	275.8	1,886.0	0.00	0.00	0.00
8,400.0	90.00	179.02	6,239.3	-1,223.88	-1,976.2	277.5	1,986.0	0.00	0.00	0.00
8,500.0	90.00	179.02	6,239.3	-1,223.87	-2,076.2	279.2	2,086.0	0.00	0.00	0.00
8,600.0	90.00	179.02	6,239.3	-1,223.87	-2,176.1	280.9	2,185.9	0.00	0.00	0.00
8,700.0	90.00	179.02	6,239.3	-1,223.86	-2,276.1	282.6	2,285.9	0.00	0.00	0.00
8,800.0	90.00	179.02	6,239.3	-1,223.86	-2,376.1	284.3	2,385.9	0.00	0.00	0.00
8,900.0	90.00	179.02	6,239.3	-1,223.86	-2,476.1	286.0	2,485.9	0.00	0.00	0.00
9,000.0	90.00	179.02	6,239.3	-1,223.85	-2,576.1	287.7	2,585.8	0.00	0.00	0.00
9,100.0	90.00	179.02	6,239.2	-1,223.85	-2,676.1	289.4	2,685.8	0.00	0.00	0.00
9,200.0	90.00	179.02	6,239.2	-1,223.84	-2,776.1	291.1	2,785.8	0.00	0.00	0.00
9,300.0	90.00	179.02	6,239.2	-1,223.84	-2,876.0	292.9	2,885.7	0.00	0.00	0.00
9,400.0	90.00	179.02	6,239.2	-1,223.84	-2,976.0	294.6	2,985.7	0.00	0.00	0.00
9,500.0	90.00	179.02	6,239.2	-1,223.83	-3,076.0	296.3	3,085.7	0.00	0.00	0.00
9,600.0	90.00	179.02	6,239.2	-1,223.83	-3,176.0	298.0	3,185.6	0.00	0.00	0.00
9,700.0	90.00	179.02	6,239.2	-1,223.83	-3,276.0	299.7	3,285.6	0.00	0.00	0.00
9,800.0	90.00	179.02	6,239.2	-1,223.82	-3,376.0	301.4	3,385.6	0.00	0.00	0.00
9,900.0	90.00	179.02	6,239.2	-1,223.82	-3,476.0	303.1	3,485.6	0.00	0.00	0.00
10,000.0	90.00	179.02	6,239.2	-1,223.82	-3,575.9	304.8	3,585.5	0.00	0.00	0.00
10,100.0	90.00	179.02	6,239.2	-1,223.82	-3,675.9	306.5	3,685.5	0.00	0.00	0.00
10,200.0	90.00	179.02	6,239.2	-1,223.81	-3,775.9	308.2	3,785.5	0.00	0.00	0.00
10,300.0	90.00	179.02	6,239.2	-1,223.81	-3,875.9	310.0	3,885.4	0.00	0.00	0.00
10,400.0	90.00	179.02	6,239.2	-1,223.81	-3,975.9	311.7	3,985.4	0.00	0.00	0.00
10,500.0	90.00	179.02	6,239.2	-1,223.81	-4,075.9	313.4	4,085.4	0.00	0.00	0.00
10,600.0	90.00	179.02	6,239.2	-1,223.81	-4,175.9	315.1	4,185.3	0.00	0.00	0.00
10,700.0	90.00	179.02	6,239.2	-1,223.81	-4,275.8	316.8	4,285.3	0.00	0.00	0.00
10,800.0	90.00	179.02	6,239.2	-1,223.81	-4,375.8	318.5	4,385.3	0.00	0.00	0.00
10,900.0	90.00	179.02	6,239.2	-1,223.80	-4,475.8	320.2	4,485.3	0.00	0.00	0.00
11,000.0	90.00	179.02	6,239.2	-1,223.80	-4,575.8	321.9	4,585.2	0.00	0.00	0.00
11,100.0	90.00	179.02	6,239.2	-1,223.80	-4,675.8	323.7	4,685.2	0.00	0.00	0.00
11,200.0	90.00	179.02	6,239.2	-1,223.80	-4,775.8	325.4	4,785.2	0.00	0.00	0.00
11,300.0	90.00	179.02	6,239.2	-1,223.80	-4,875.7	327.1	4,885.1	0.00	0.00	0.00
11,400.0	90.00	179.02	6,239.2	-1,223.80	-4,975.7	328.8	4,985.1	0.00	0.00	0.00
11,500.0	90.00	179.02	6,239.2	-1,223.80	-5,075.7	330.5	5,085.1	0.00	0.00	0.00
11,600.0	90.00	179.02	6,239.2	-1,223.80	-5,175.7	332.2	5,185.0	0.00	0.00	0.00
11,700.0	90.00	179.02	6,239.2	-1,223.80	-5,275.7	333.9	5,285.0	0.00	0.00	0.00
11,800.0	90.00	179.02	6,239.2	-1,223.80	-5,375.7	335.6	5,385.0	0.00	0.00	0.00
11,900.0	90.00	179.02	6,239.2	-1,223.81	-5,475.7	337.4	5,485.0	0.00	0.00	0.00
12,000.0	90.00	179.02	6,239.2	-1,223.81	-5,575.6	339.1	5,584.9	0.00	0.00	0.00
12,100.0	90.00	179.02	6,239.2	-1,223.81	-5,675.6	340.8	5,684.9	0.00	0.00	0.00
12,200.0	90.00	179.02	6,239.2	-1,223.81	-5,775.6	342.5	5,784.9	0.00	0.00	0.00
12,300.0	90.00	179.02	6,239.2	-1,223.81	-5,875.6	344.2	5,884.8	0.00	0.00	0.00
12,400.0	90.00	179.02	6,239.2	-1,223.81	-5,975.6	345.9	5,984.8	0.00	0.00	0.00
12,500.0	90.00	179.02	6,239.2	-1,223.81	-6,075.6	347.7	6,084.8	0.00	0.00	0.00
12,600.0	90.00	179.02	6,239.2	-1,223.82	-6,175.6	349.4	6,184.7	0.00	0.00	0.00
12,700.0	90.00	179.02	6,239.2	-1,223.82	-6,275.5	351.1	6,284.7	0.00	0.00	0.00
12,800.0	90.00	179.02	6,239.2	-1,223.82	-6,375.5	352.8	6,384.7	0.00	0.00	0.00
12,900.0	90.00	179.02	6,239.2	-1,223.82	-6,475.5	354.5	6,484.7	0.00	0.00	0.00
13,000.0	90.00	179.02	6,239.2	-1,223.83	-6,575.5	356.2	6,584.6	0.00	0.00	0.00
13,100.0	90.00	179.02	6,239.2	-1,223.83	-6,675.5	358.0	6,684.6	0.00	0.00	0.00
13,200.0	90.00	179.02	6,239.2	-1,223.83	-6,775.5	359.7	6,784.6	0.00	0.00	0.00
13,300.0	90.00	179.02	6,239.2	-1,223.84	-6,875.5	361.4	6,884.5	0.00	0.00	0.00
13,400.0	90.00	179.02	6,239.2	-1,223.84	-6,975.4	363.1	6,984.5	0.00	0.00	0.00

# Planning Report



<b>Database:</b>	EDM 5000.1 Single User Db	<b>Local Co-ordinate Reference:</b>	Well BASHOR 9-60 27B-34-7
<b>Company:</b>	BISON OIL & GAS II, LLC	<b>TVD Reference:</b>	KB-EST @ 5015.4usft (Original Well Elev)
<b>Project:</b>	WELD COUNTY, COLORADO (NAD 83)	<b>MD Reference:</b>	KB-EST @ 5015.4usft (Original Well Elev)
<b>Site:</b>	NW NE SEC. 27 T9N R60 W 6th P.M.	<b>North Reference:</b>	True
<b>Well:</b>	BASHOR 9-60 27B-34-7	<b>Survey Calculation Method:</b>	Minimum Curvature
<b>Wellbore:</b>	ORIGINAL WELLBORE		
<b>Design:</b>	PROPOSAL #1		

## Planned Survey

MD (usft)	Inc (°)	Azi (°)	TVD (usft)	SS (usft)	+N/-S (usft)	+E/-W (usft)	Vertical Section (usft)	Dogleg Rate (°/100usft)	Build Rate (°/100usft)	Turn Rate (°/100usft)
13,500.0	90.00	179.02	6,239.2	-1,223.84	-7,075.4	364.8	7,084.5	0.00	0.00	0.00
13,600.0	90.00	179.02	6,239.2	-1,223.85	-7,175.4	366.5	7,184.4	0.00	0.00	0.00
13,700.0	90.00	179.02	6,239.3	-1,223.85	-7,275.4	368.3	7,284.4	0.00	0.00	0.00
13,800.0	90.00	179.02	6,239.3	-1,223.86	-7,375.4	370.0	7,384.4	0.00	0.00	0.00
13,900.0	90.00	179.02	6,239.3	-1,223.86	-7,475.4	371.7	7,484.4	0.00	0.00	0.00
14,000.0	90.00	179.02	6,239.3	-1,223.86	-7,575.4	373.4	7,584.3	0.00	0.00	0.00
14,100.0	90.00	179.01	6,239.3	-1,223.87	-7,675.3	375.1	7,684.3	0.00	0.00	0.00
14,200.0	90.00	179.01	6,239.3	-1,223.87	-7,775.3	376.9	7,784.3	0.00	0.00	0.00
14,300.0	90.00	179.01	6,239.3	-1,223.88	-7,875.3	378.6	7,884.2	0.00	0.00	0.00
14,400.0	90.00	179.01	6,239.3	-1,223.88	-7,975.3	380.3	7,984.2	0.00	0.00	0.00
14,500.0	90.00	179.01	6,239.3	-1,223.89	-8,075.3	382.0	8,084.2	0.00	0.00	0.00
14,600.0	90.00	179.01	6,239.3	-1,223.90	-8,175.3	383.7	8,184.1	0.00	0.00	0.00
14,700.0	90.00	179.01	6,239.3	-1,223.90	-8,275.2	385.5	8,284.1	0.00	0.00	0.00
14,800.0	90.00	179.01	6,239.3	-1,223.91	-8,375.2	387.2	8,384.1	0.00	0.00	0.00
14,900.0	90.00	179.01	6,239.3	-1,223.91	-8,475.2	388.9	8,484.1	0.00	0.00	0.00
15,000.0	90.00	179.01	6,239.3	-1,223.92	-8,575.2	390.6	8,584.0	0.00	0.00	0.00
15,100.0	90.00	179.01	6,239.3	-1,223.93	-8,675.2	392.3	8,684.0	0.00	0.00	0.00
15,200.0	90.00	179.01	6,239.3	-1,223.93	-8,775.2	394.1	8,784.0	0.00	0.00	0.00
15,300.0	90.00	179.01	6,239.3	-1,223.94	-8,875.2	395.8	8,883.9	0.00	0.00	0.00
15,400.0	90.00	179.01	6,239.3	-1,223.95	-8,975.1	397.5	8,983.9	0.00	0.00	0.00
15,500.0	90.00	179.01	6,239.4	-1,223.95	-9,075.1	399.2	9,083.9	0.00	0.00	0.00
15,600.0	90.00	179.01	6,239.4	-1,223.96	-9,175.1	400.9	9,183.9	0.00	0.00	0.00
15,700.0	90.00	179.01	6,239.4	-1,223.97	-9,275.1	402.7	9,283.8	0.00	0.00	0.00
15,800.0	90.00	179.01	6,239.4	-1,223.98	-9,375.1	404.4	9,383.8	0.00	0.00	0.00
15,900.0	90.00	179.01	6,239.4	-1,223.98	-9,475.1	406.1	9,483.8	0.00	0.00	0.00
16,000.0	90.00	179.01	6,239.4	-1,223.99	-9,575.1	407.8	9,583.7	0.00	0.00	0.00
<b>EPI: 600ft FSL &amp; 1039ft FEL of Sec 34</b>										
<b>16,098.7</b>	<b>90.00</b>	<b>179.01</b>	<b>6,239.4</b>	<b>-1,224.00</b>	<b>-9,673.7</b>	<b>409.5</b>	<b>9,682.4</b>	<b>0.00</b>	<b>0.00</b>	<b>0.00</b>
16,100.0	90.00	179.01	6,239.4	-1,224.00	-9,675.0	409.6	9,683.7	0.05	0.00	-0.05
16,200.0	90.00	178.96	6,239.4	-1,224.01	-9,775.0	411.3	9,783.7	0.05	0.00	-0.05
16,300.0	90.00	178.91	6,239.4	-1,224.01	-9,875.0	413.2	9,883.6	0.05	0.00	-0.05
<b>BHL: 300ft FSL &amp; 1039ft FEL of Sec 34</b>										
<b>16,398.5</b>	<b>90.00</b>	<b>178.87</b>	<b>6,239.4</b>	<b>-1,224.00</b>	<b>-9,973.5</b>	<b>415.1</b>	<b>9,982.2</b>	<b>0.05</b>	<b>0.00</b>	<b>-0.05</b>

## Formations

MD (usft)	TVD (usft)	Name	Lithology	Dip (°)	Dip Direction (°)
630.6	630.4	PIERRE SHALE (BASE OF FOX HI			
3,530.7	3,487.4	PARKMAN			
4,055.7	4,012.4	SUSSEX			
5,153.7	5,110.4	SHANNON			
6,266.1	6,139.4	SHARON SPRINGS SHALE			
6,423.5	6,209.4	NIOBRARA FORMATION			
6,457.9	6,219.4	NIOBRARA A CHALK			

# Planning Report



<b>Database:</b>	EDM 5000.1 Single User Db	<b>Local Co-ordinate Reference:</b>	Well BASHOR 9-60 27B-34-7
<b>Company:</b>	BISON OIL & GAS II, LLC	<b>TVD Reference:</b>	KB-EST @ 5015.4usft (Original Well Elev)
<b>Project:</b>	WELD COUNTY, COLORADO (NAD 83)	<b>MD Reference:</b>	KB-EST @ 5015.4usft (Original Well Elev)
<b>Site:</b>	NW NE SEC. 27 T9N R60 W 6th P.M.	<b>North Reference:</b>	True
<b>Well:</b>	BASHOR 9-60 27B-34-7	<b>Survey Calculation Method:</b>	Minimum Curvature
<b>Wellbore:</b>	ORIGINAL WELLBORE		
<b>Design:</b>	PROPOSAL #1		

Plan Annotations				
MD (usft)	TVD (usft)	Local Coordinates		Comment
		+N/-S (usft)	+E/-W (usft)	
0.0	0.0	0.0	0.0	SHL: 410ft FNL & 1341ft FEL of Sec 27
400.0	400.0	0.0	0.0	START NUDGE (2°/100ft BUR)
1,000.0	995.6	53.4	32.7	EOB TO 12° INC
2,579.8	2,540.9	333.3	204.5	END OF TANGENT
3,179.8	3,136.5	386.7	237.2	EOD TO VERTICAL
5,709.8	5,666.5	386.7	237.2	KOP (10°/100ft BUR)
6,609.7	6,239.4	-186.2	247.0	BPI: 600ft FNL & 1095ft FEL of Sec 27
16,098.7	6,239.4	-9,673.7	409.5	EPI: 600ft FSL & 1039ft FEL of Sec 34
16,398.5	6,239.4	-9,973.5	415.1	BHL: 300ft FSL & 1039ft FEL of Sec 34