

LEGEND:

- = 90° SYMBOL  
● = PROPOSED WELLHEAD.  
◆ = PRODUCTION INTERVAL.  
○ = TARGET BOTTOM HOLE.  
▲ = SECTION CORNERS LOCATED. (NAD 83)

| LINE TABLE |             |         |
|------------|-------------|---------|
| LINE       | DIRECTION   | LENGTH  |
| L1         | N51°05'23"W | 637.48' |
| L2         | S01°02'29"E | 600.00' |
| L3         | S01°02'29"E | 300.01' |

PDOP = 1.5

| SURFACE LOCATION<br>410' FNL 1425' FEL                |  |
|---|--|
| NAD 83 (SURFACE LOCATION)                             |  |
| LATITUDE = 40°43'38.06" (40.727239)                   |  |
| LONGITUDE = 104°04'26.03" (104.073897)                |  |
| NAD 27 (SURFACE LOCATION)                             |  |
| LATITUDE = 40°43'38.11" (40.727253)                   |  |
| LONGITUDE = 104°04'24.21" (104.073392)                |  |
| STATE PLANE NAD 83 (CO. NORTH)                        |  |
| N: 1510955.86 E: 3395250.26                           |  |
| STATE PLANE NAD 27 (CO. NORTH)                        |  |
| N: 510954.14 E: 2395400.38                            |  |
| BEG. PROD. INTERVAL<br>600' FNL 3431' FWL 1911' FEL   |  |
| NAD 83 (BEG. PROD. INTERVAL)                          |  |
| LATITUDE = 40°43'36.09" (40.726692)                   |  |
| LONGITUDE = 104°04'32.33" (104.075647)                |  |
| NAD 27 (BEG. PROD. INTERVAL)                          |  |
| LATITUDE = 40°43'36.14" (40.726706)                   |  |
| LONGITUDE = 104°04'30.52" (104.075144)                |  |
| STATE PLANE NAD 83 (CO. NORTH)                        |  |
| N: 1510749.12 E: 3394768.31                           |  |
| STATE PLANE NAD 27 (CO. NORTH)                        |  |
| N: 510747.41 E: 2394918.41                            |  |
| ENDING PROD. INTERVAL<br>600' FSL 3435' FWL 1855' FEL |  |
| NAD 83 (ENDING PROD. INTERVAL)                        |  |
| LATITUDE = 40°42'02.42" (40.700672)                   |  |
| LONGITUDE = 104°04'30.22" (104.075061)                |  |
| NAD 27 (ENDING PROD. INTERVAL)                        |  |
| LATITUDE = 40°42'02.47" (40.700686)                   |  |
| LONGITUDE = 104°04'28.40" (104.074556)                |  |
| STATE PLANE NAD 83 (CO. NORTH)                        |  |
| N: 1501273.14 E: 3395083.41                           |  |
| STATE PLANE NAD 27 (CO. NORTH)                        |  |
| N: 501271.59 E: 2395233.65                            |  |
| TARGET BOTTOM HOLE<br>300' FSL 3431' FWL 1856' FEL    |  |
| NAD 83 (TARGET BOTTOM HOLE)                           |  |
| LATITUDE = 40°41'59.46" (40.699850)                   |  |
| LONGITUDE = 104°04'30.15" (104.075042)                |  |
| NAD 27 (TARGET BOTTOM HOLE)                           |  |
| LATITUDE = 40°41'59.51" (40.699864)                   |  |
| LONGITUDE = 104°04'28.33" (104.074536)                |  |
| STATE PLANE NAD 83 (CO. NORTH)                        |  |
| N: 1500973.37 E: 3395093.38                           |  |
| STATE PLANE NAD 27 (CO. NORTH)                        |  |
| N: 500971.83 E: 2395243.63                            |  |

**BASIS OF BEARINGS**  
BASIS OF BEARINGS IS A G.P.S. OBSERVATION

**BASIS OF ELEVATION**  
SPOT ELEVATION LOCATED AT THE NORTHEAST CORNER OF SECTION 2, T9N, R61W, 6th P.M., TAKEN FROM THE GROVER SOUTH, QUADRANGLE, COLORADO, WELD COUNTY, 7.5 MINUTE QUAD (TOPOGRAPHICAL MAP) PUBLISHED BY THE UNITED STATES DEPARTMENT OF THE INTERIOR, GEOLOGICAL SURVEY. SAID ELEVATION IS MARKED AS BEING 5043 FEET.



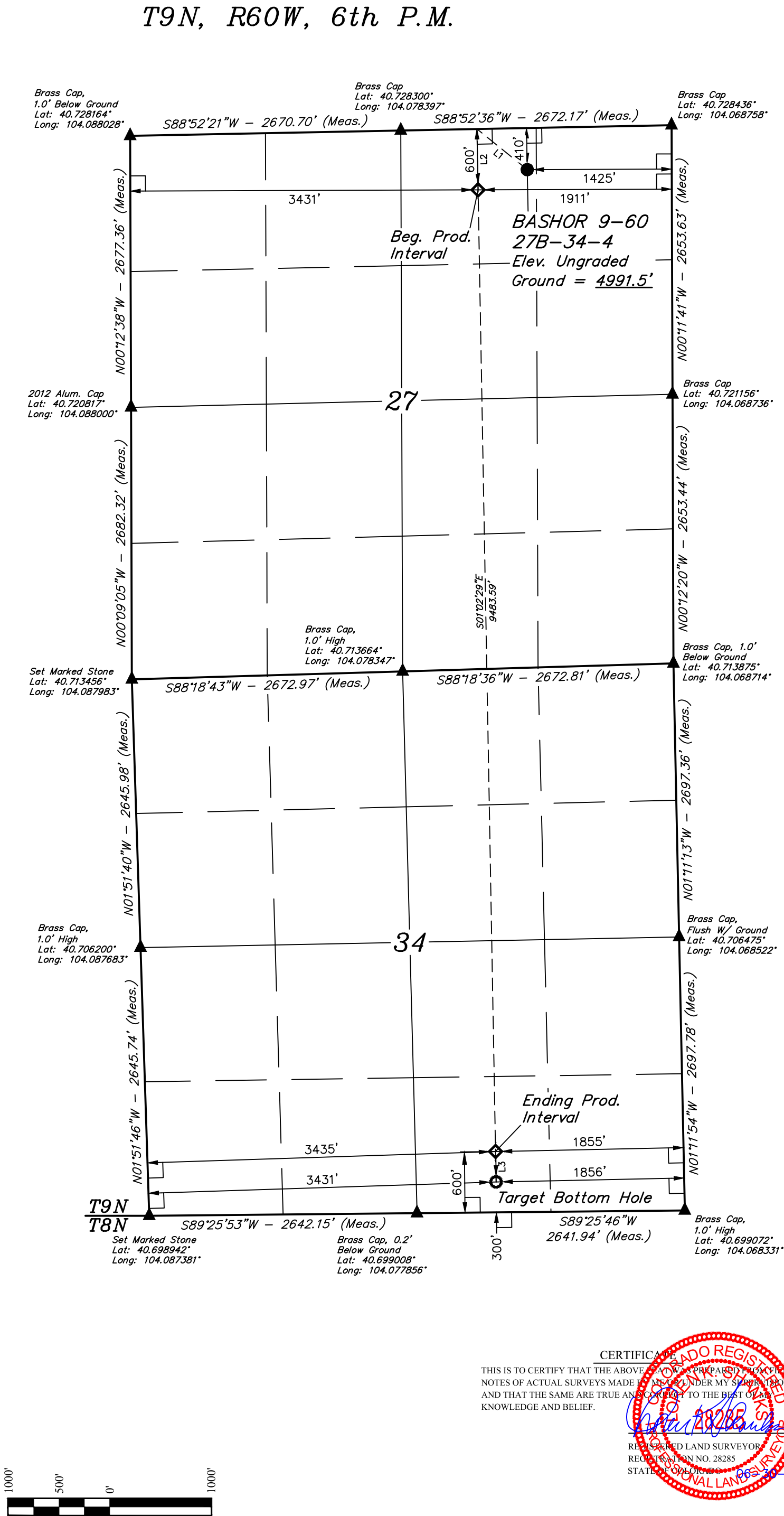
**UELS, LLC**  
Corporate Office \* 85 South 200 East  
Vernal, UT 84078 \* (435) 789-1017



**BISON OIL & GAS II**  
**BASHOR 9-60 27B-34-4**  
**NW 1/4 NE 1/4, SECTION 27, T9N, R60W, 6th P.M.**  
**WELD COUNTY, COLORADO**

|             |               |          |            |
|-------------|---------------|----------|------------|
| SURVEYED BY | ROBERT FISHER | 06-23-17 | SCALE      |
| DRAWN BY    | C.C.          | 06-28-17 | 1" = 1000' |

**WELL LOCATION PLAT**



CERTIFICATE  
THIS IS TO CERTIFY THAT THE ABOVE AND WAS PREPARED FROM FIELD NOTES OF ACTUAL SURVEYS MADE BY ME OR UNDER MY SUPERVISION, AND THAT THE SAME ARE TRUE AND CORRECT TO THE BEST OF MY KNOWLEDGE AND BELIEF.

