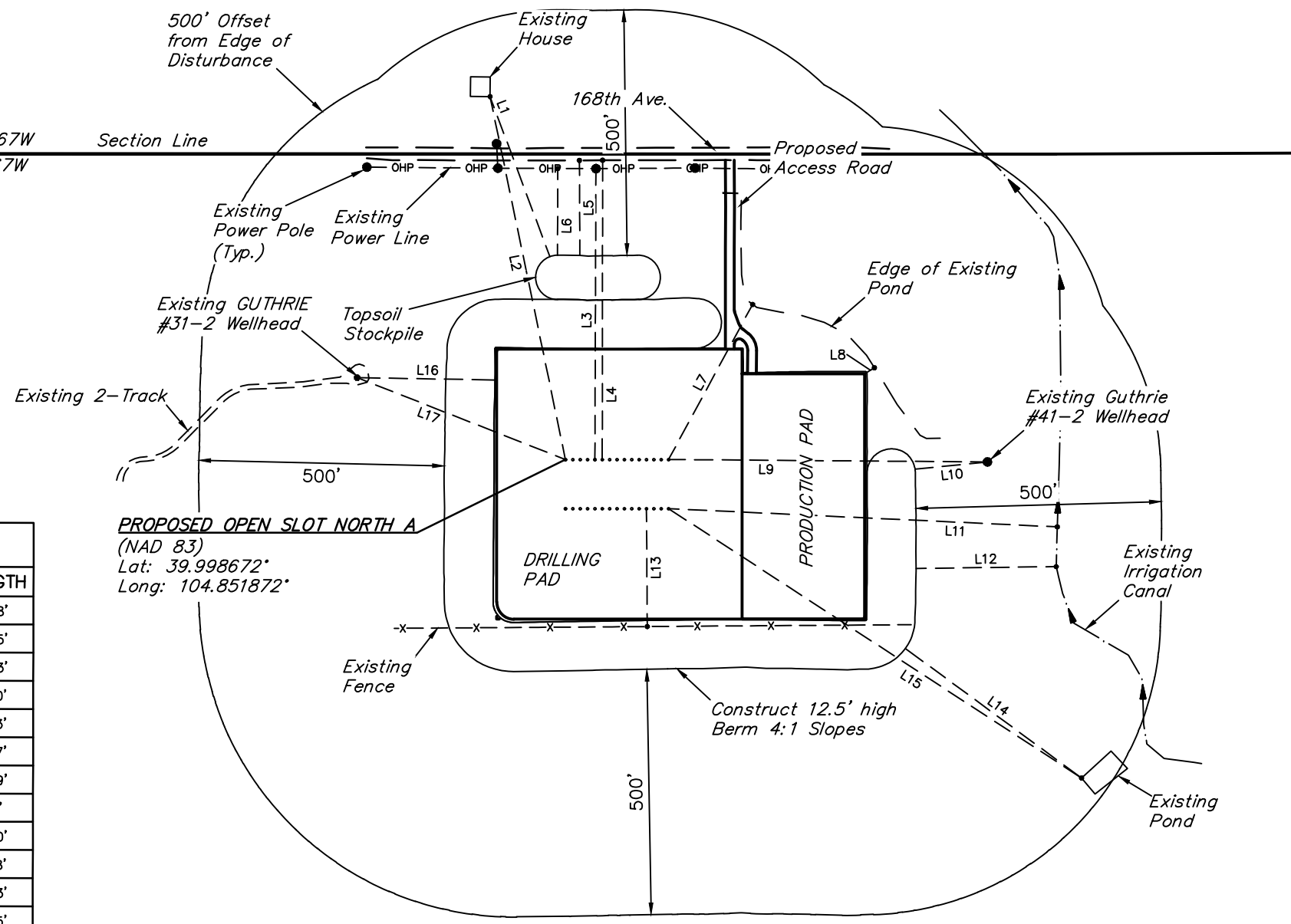


WELD CO. Section 35, T1N, R67W
 ADAMS CO. Section 2, T1S, R67W



LINE TABLE		
LINE	DIRECTION	LENGTH
L1	N21°W	348'
L2	N12°W	755'
L3	NORTH	593'
L4	NORTH	610'
L5	NORTH	193'
L6	NORTH	177'
L7	N28°E	359'
L8	N58°E	18'
L9	EAST	650'
L10	N84°E	148'
L11	S87°E	793'
L12	N89°E	285'
L13	S01°E	240'
L14	S54°E	446'
L15	S57°E	1005'
L16	N89°W	281'
L17	N69°W	456'

PROPOSED OPEN SLOT NORTH A
 (NAD 83)
 Lat: 39.998672°
 Long: 104.851872°

REV: 4 05-02-17 T.B. (NEARBY DRILLED WELL ADD)

GREAT WESTERN OPERATING COMPANY
 BASELINE LE PAD
 N 1/2 NE 1/4, SECTION 2, T1S, R67W, 6th P.M.
 ADAMS COUNTY, COLORADO

SURVEYED BY	JARED CHISTOPHER	01-31-17	SCALE
DRAWN BY	L.C.S.	08-02-16	1" = 300'
LOCATION DRAWING		FIGURE #4	