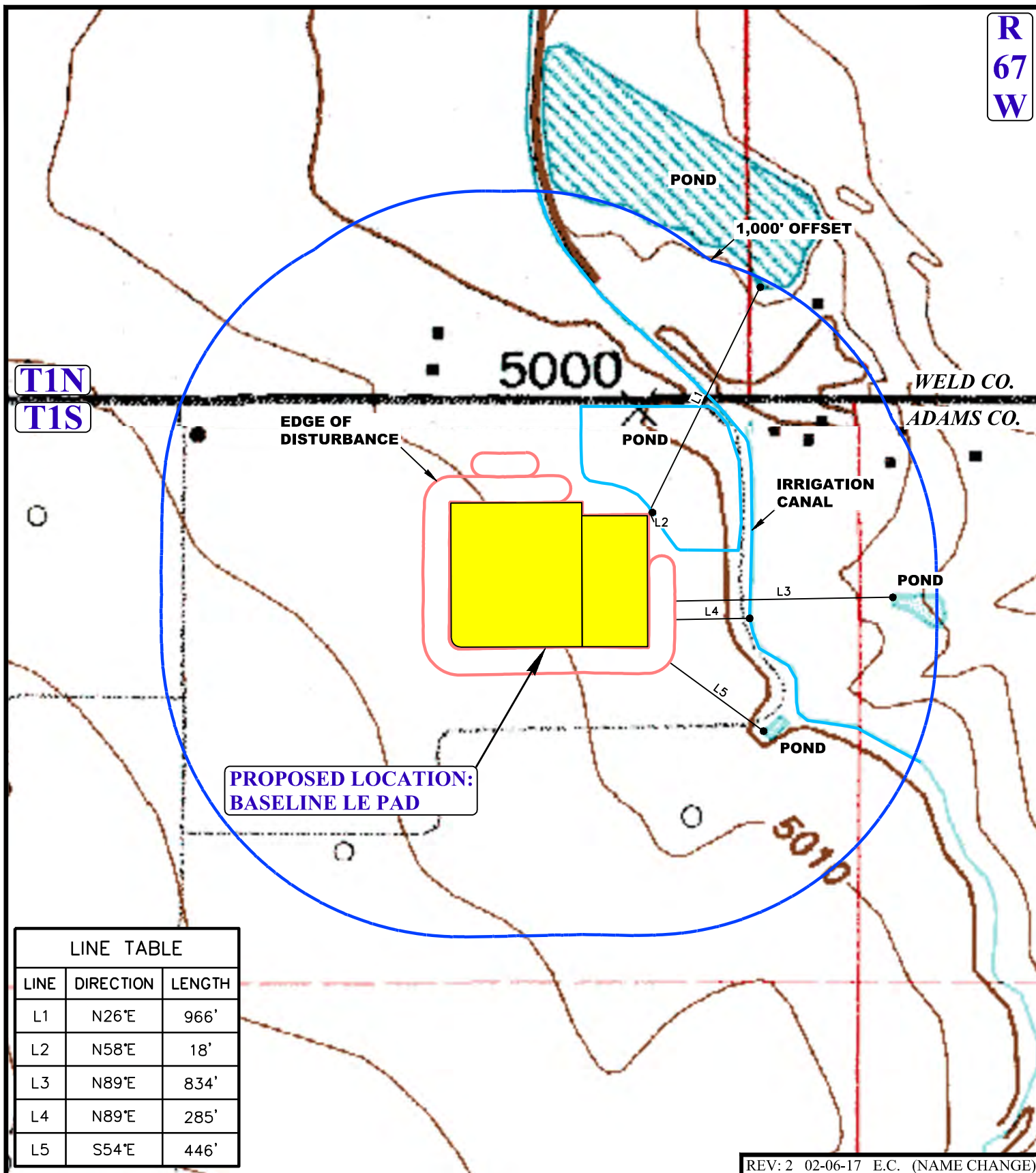


**R
67
W**

**T1N
T1S**



LINE TABLE		
LINE	DIRECTION	LENGTH
L1	N26°E	966'
L2	N58°E	18'
L3	N89°E	834'
L4	N89°E	285'
L5	S54°E	446'

REV: 2 02-06-17 E.C. (NAME CHANGE)

LEGEND:

- EXISTING DRAINAGE
- 1000' OFFSET BOUNDARY
- EDGE OF DISTURBANCE



GREAT WESTERN OPERATING COMPANY

BASELINE LE PAD
N 1/2 NE 1/4, SECTION 2, T1S, R67W, 6th P.M.
ADAMS COUNTY, COLORADO

SURVEYED BY	J.C.	01-31-17	SCALE
DRAWN BY	J.L.G.	07-19-16	1 : 6,000
HYDROLOGY MAP		TOPO W	



UELS, LLC
Corporate Office * 85 South 200 East
Vernal, UT 84078 * (435) 789-1017