

FINISHED GRADE ELEVATION = 5008.0'

REV: 5 05-01-17 T.B. (NAME CHANGES)

NOTES:

- Round corners at 35' radius or as needed.
- Contours shown at 2' intervals.
- Berm requires 55,750 Cu. Yds. of material.

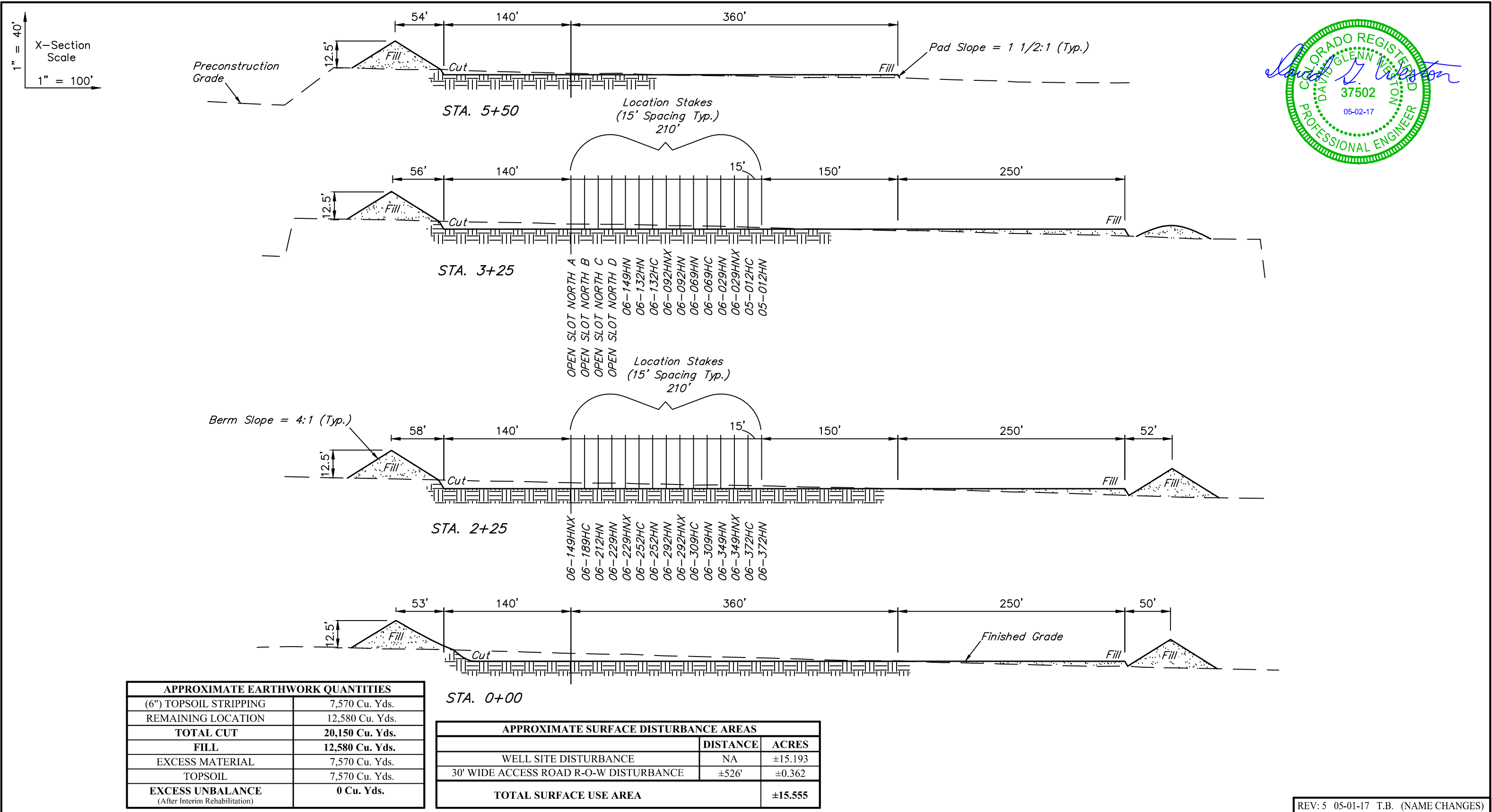
GREAT WESTERN OPERATING COMPANY

BASELINE LE PAD
N 1/2 NE 1/4, SECTION 2, T1S, R67W, 6th P.M.
ADAMS COUNTY, COLORADO



UELS, LLC
Corporate Office * 85 South 200 East
Vernal, UT 84078 * (435) 789-1017

SURVEYED BY	JARED CHISTOPHER	01-31-17	SCALE
DRAWN BY	L.C.S.	08-02-16	1" = 100'
CONSTRUCTION LAYOUT		FIGURE #1	



- NOTES:**
- Fill quantity includes 5% for compaction.
 - Calculations based on 6" of topsoil stripping.
 - Earthwork quantities do not include dirt volume for berm.
 - Berm requires 55,750 Cu. Yds. of material.

GREAT WESTERN OPERATING COMPANY

BASELINE LE PAD
N 1/2 NE 1/4, SECTION 2, T1S, R67W, 6th P.M.
ADAMS COUNTY, COLORADO

REV: 5 05-01-17 T.B. (NAME CHANGES)

SURVEYED BY	JARED CHISTOPHER	01-31-17	SCALE
DRAWN BY	L.C.S.	08-02-16	AS SHOWN
CONSTRUCTION LAYOUT CROSS SECTIONS			FIGURE #2



UELS, LLC
Corporate Office * 85 South 200 East
Vernal, UT 84078 * (435) 789-1017