

PROJECT DETAILS: Weld County, CO NAD 83

Geodetic System: US State Plane 1983
Datum: North American Datum 1983
Ellipsoid: GRS 1980
Zone: Colorado Northern Zone
System Datum: Mean Sea Level
Local North: True

Project: Weld County, CO NAD 83
Site: Anschutz Equus Farms 4-62-28_27 SWSW Pad
Well: Anschutz Equus Farms 4-62-29-5764C
Wellbore: OH
Design: Plan 2



Azimuths to True North
Magnetic North: 8.27°



Magnetic Field
Strength: 52360.9nT
Dip Angle: 66.93°
Date: 7/18/2017
Model: HDGM

Plan: Plan 2 (Anschutz Equus Farms 4-62-29-5764C/OH)

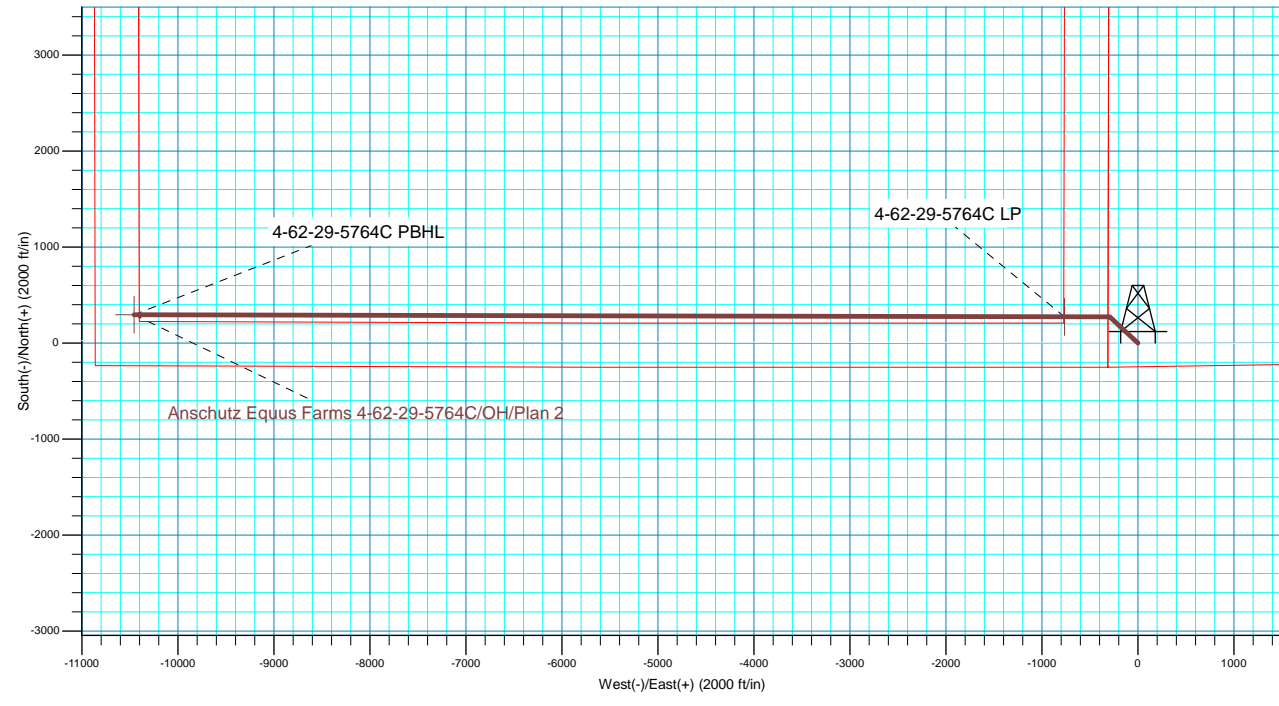
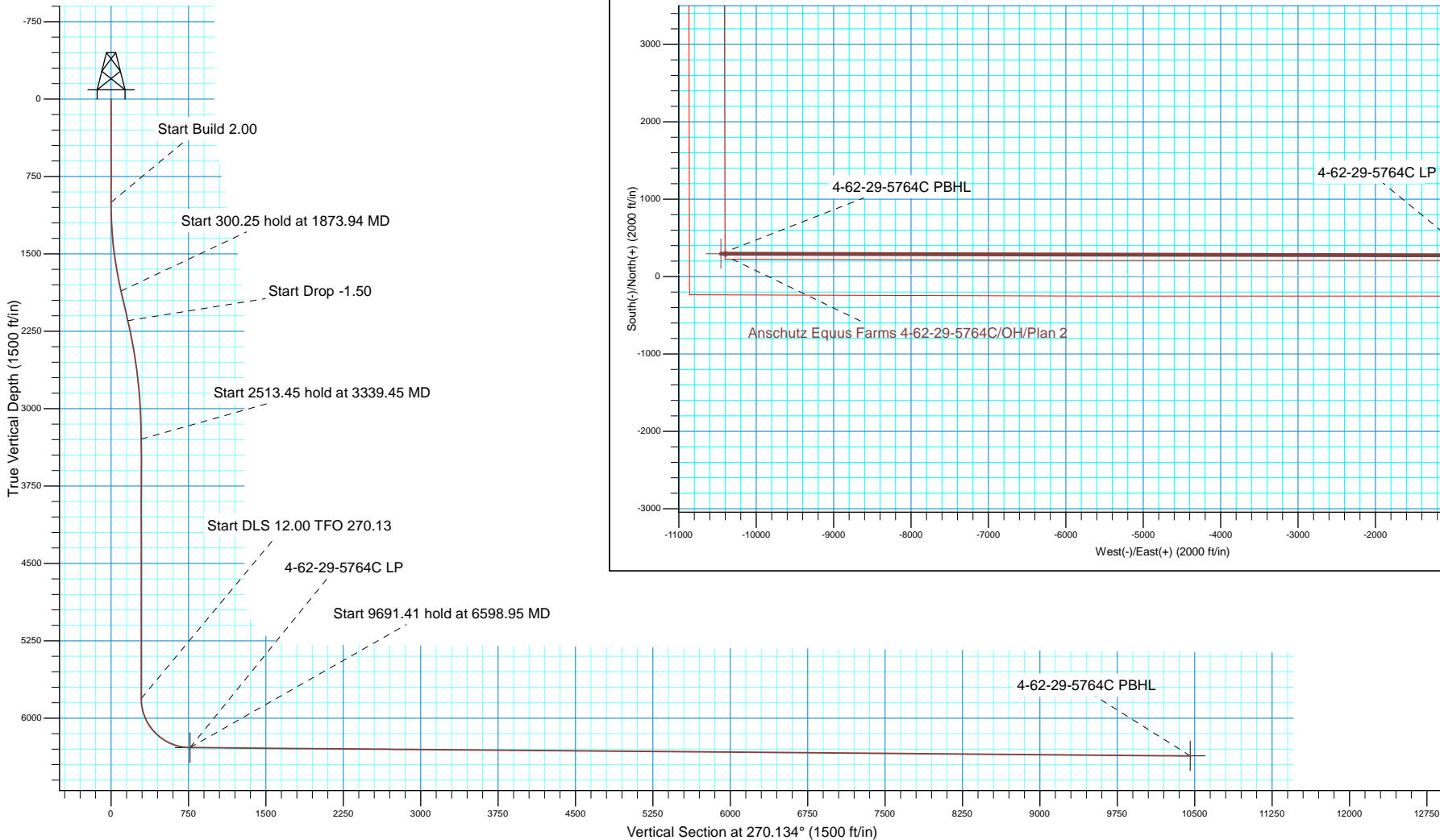
Created By: Seth Burstad Date: 7-18-2017

SECTION DETAILS

MD	Inc	Azi	TVD	+N/-S	+E/-W	Dleg	TFace	VSect
0.00	0.00	0.000	0.00	0.00	0.00	0.00	0.00	0.00
1000.00	0.00	0.000	1000.00	0.00	0.00	0.00	0.00	0.00
1873.94	17.48	313.029	1860.45	90.26	-96.69	2.00	313.03	96.90
2174.19	17.48	313.029	2146.83	151.79	-162.62	0.00	0.00	162.97
3339.45	0.00	0.000	3294.10	272.14	-291.54	1.50	180.00	292.18
5852.90	0.00	0.000	5807.55	272.14	-291.54	0.00	0.00	292.18
6598.95	89.53	270.134	6285.00	273.24	-765.06	12.00	270.13	765.70
16290.36	89.53	270.134	6365.00	295.85	-10456.11	0.00	0.00	10456.78

WELL DETAILS: Anschutz Equus Farms 4-62-29-5764C

		GL 4635' & KB 20' @ 4655.00ft		4635.00		
+N/-S	+E/-W	Northing	Easting	Latitude	Longitude	
0.00	0.00	1345632.90	3324371.40	40° 16' 34.770 N	104° 20' 14.719 W	





Bill Barrett Corporation

Bill Barrett Corp.

Weld County, CO NAD 83

Anschutz Equus Farms 4-62-28_27 SWSW Pad

Anschutz Equus Farms 4-62-29-5764C

OH

Plan: Plan 2

Standard Planning Report

18 July, 2017



Scientific Drilling

www.scientificdrilling.com



Database:	Casper District	Local Co-ordinate Reference:	Well Anschutz Equus Farms 4-62-29-5764C
Company:	Bill Barrett Corp.	TVD Reference:	GL 4635' & KB 20' @ 4655.00ft
Project:	Weld County, CO NAD 83	MD Reference:	GL 4635' & KB 20' @ 4655.00ft
Site:	Anschutz Equus Farms 4-62-28_27 SWSW Pad	North Reference:	True
Well:	Anschutz Equus Farms 4-62-29-5764C	Survey Calculation Method:	Minimum Curvature
Wellbore:	OH		
Design:	Plan 2		

Project	Weld County, CO NAD 83		
Map System:	US State Plane 1983	System Datum:	Mean Sea Level
Geo Datum:	North American Datum 1983		
Map Zone:	Colorado Northern Zone		

Site						Anschutz Equus Farms 4-62-28_27 SWSW Pad											
Site Position:			Northing:			1,345,937.78 usft			Latitude:			40° 16' 37.790 N					
From:			Lat/Long			Easting:			3,324,312.31 usft			Longitude:			104° 20' 15.430 W		
Position Uncertainty:			0.00 ft			Slot Radius:			13.200 in			Grid Convergence:			0.75 °		

Well	Anschutz Equus Farms 4-62-29-5764C, 245' FSL 306' FWL Sec 28 T4N R62W					
Well Position	+N/-S	-305.62 ft	Northing:	1,345,632.91 usft	Latitude:	40° 16' 34.770 N
	+E/-W	55.09 ft	Easting:	3,324,371.41 usft	Longitude:	104° 20' 14.719 W
Position Uncertainty		0.00 ft	Wellhead Elevation:	0.00 ft	Ground Level:	4,635.00 ft

Wellbore	OH				
Magnetics	Model Name	Sample Date	Declination (°)	Dip Angle (°)	Field Strength (nT)
	HDGM	5/3/2017	8.28	66.95	52,386
	HDGM	7/18/2017	8.27	66.93	52,361

Design	Plan 2			
Audit Notes:				
Version:	Phase:	PLAN	Tie On Depth:	0.00
Vertical Section:	Depth From (TVD) (ft)	+N/-S (ft)	+E/-W (ft)	Direction (°)
	0.00	0.00	0.00	270.134

Plan Sections										
Measured Depth (ft)	Inclination (°)	Azimuth (°)	Vertical Depth (ft)	+N/-S (ft)	+E/-W (ft)	Dogleg Rate (°/100ft)	Build Rate (°/100ft)	Turn Rate (°/100ft)	TFO (°)	Target
0.00	0.00	0.000	0.00	0.00	0.00	0.00	0.00	0.00	0.00	
1,000.00	0.00	0.000	1,000.00	0.00	0.00	0.00	0.00	0.00	0.00	
1,873.94	17.48	313.029	1,860.45	90.26	-96.69	2.00	2.00	0.00	313.03	
2,174.19	17.48	313.029	2,146.83	151.79	-162.62	0.00	0.00	0.00	0.00	
3,339.45	0.00	0.000	3,294.10	272.14	-291.54	1.50	-1.50	0.00	180.00	
5,852.90	0.00	0.000	5,807.55	272.14	-291.54	0.00	0.00	0.00	0.00	
6,598.95	89.53	270.134	6,285.00	273.24	-765.06	12.00	12.00	-12.05	270.13	
16,290.36	89.53	270.134	6,365.00	295.85	-10,456.11	0.00	0.00	0.00	0.00	4-62-29-5764C PBHL

Database:	Casper District	Local Co-ordinate Reference:	Well Anschutz Equus Farms 4-62-29-5764C
Company:	Bill Barrett Corp.	TVD Reference:	GL 4635' & KB 20' @ 4655.00ft
Project:	Weld County, CO NAD 83	MD Reference:	GL 4635' & KB 20' @ 4655.00ft
Site:	Anschutz Equus Farms 4-62-28_27 SWSW Pad	North Reference:	True
Well:	Anschutz Equus Farms 4-62-29-5764C	Survey Calculation Method:	Minimum Curvature
Wellbore:	OH		
Design:	Plan 2		

Planned Survey

Measured Depth (ft)	Inclination (°)	Azimuth (°)	Vertical Depth (ft)	+N/-S (ft)	+E/-W (ft)	Vertical Section (ft)	Dogleg Rate (°/100ft)	Build Rate (°/100ft)	Turn Rate (°/100ft)
0.00	0.00	0.000	0.00	0.00	0.00	0.00	0.00	0.00	0.00
100.00	0.00	0.000	100.00	0.00	0.00	0.00	0.00	0.00	0.00
200.00	0.00	0.000	200.00	0.00	0.00	0.00	0.00	0.00	0.00
300.00	0.00	0.000	300.00	0.00	0.00	0.00	0.00	0.00	0.00
400.00	0.00	0.000	400.00	0.00	0.00	0.00	0.00	0.00	0.00
500.00	0.00	0.000	500.00	0.00	0.00	0.00	0.00	0.00	0.00
600.00	0.00	0.000	600.00	0.00	0.00	0.00	0.00	0.00	0.00
700.00	0.00	0.000	700.00	0.00	0.00	0.00	0.00	0.00	0.00
800.00	0.00	0.000	800.00	0.00	0.00	0.00	0.00	0.00	0.00
900.00	0.00	0.000	900.00	0.00	0.00	0.00	0.00	0.00	0.00
1,000.00	0.00	0.000	1,000.00	0.00	0.00	0.00	0.00	0.00	0.00
Start Build 2.00									
1,100.00	2.00	313.029	1,099.98	1.19	-1.28	1.28	2.00	2.00	0.00
1,200.00	4.00	313.029	1,199.84	4.76	-5.10	5.11	2.00	2.00	0.00
1,300.00	6.00	313.029	1,299.45	10.71	-11.47	11.50	2.00	2.00	0.00
1,400.00	8.00	313.029	1,398.70	19.02	-20.38	20.42	2.00	2.00	0.00
1,500.00	10.00	313.029	1,497.47	29.70	-31.82	31.88	2.00	2.00	0.00
1,600.00	12.00	313.029	1,595.62	42.72	-45.76	45.86	2.00	2.00	0.00
1,700.00	14.00	313.029	1,693.06	58.07	-62.21	62.34	2.00	2.00	0.00
1,800.00	16.00	313.029	1,789.64	75.73	-81.13	81.30	2.00	2.00	0.00
1,873.94	17.48	313.029	1,860.45	90.26	-96.69	96.90	2.00	2.00	0.00
Start 300.25 hold at 1873.94 MD									
1,900.00	17.48	313.029	1,885.30	95.60	-102.41	102.64	0.00	0.00	0.00
2,000.00	17.48	313.029	1,980.69	116.09	-124.37	124.64	0.00	0.00	0.00
2,100.00	17.48	313.029	2,076.07	136.59	-146.33	146.65	0.00	0.00	0.00
2,174.19	17.48	313.029	2,146.83	151.79	-162.62	162.97	0.00	0.00	0.00
Start Drop -1.50									
2,200.00	17.09	313.029	2,171.48	157.03	-168.22	168.59	1.50	-1.50	0.00
2,300.00	15.59	313.029	2,267.44	176.23	-188.79	189.20	1.50	-1.50	0.00
2,400.00	14.09	313.029	2,364.10	193.71	-207.51	207.97	1.50	-1.50	0.00
2,500.00	12.59	313.029	2,461.40	209.45	-224.38	224.87	1.50	-1.50	0.00
2,600.00	11.09	313.029	2,559.26	223.45	-239.38	239.90	1.50	-1.50	0.00
2,700.00	9.59	313.029	2,657.64	235.70	-252.50	253.06	1.50	-1.50	0.00
2,800.00	8.09	313.029	2,756.45	246.19	-263.74	264.32	1.50	-1.50	0.00
2,900.00	6.59	313.029	2,855.62	254.91	-273.08	273.68	1.50	-1.50	0.00
3,000.00	5.09	313.029	2,955.10	261.85	-280.52	281.13	1.50	-1.50	0.00
3,100.00	3.59	313.029	3,054.81	267.02	-286.06	286.68	1.50	-1.50	0.00
3,200.00	2.09	313.029	3,154.69	270.40	-289.68	290.31	1.50	-1.50	0.00
3,300.00	0.59	313.029	3,254.66	272.00	-291.39	292.03	1.50	-1.50	0.00
3,339.45	0.00	0.000	3,294.10	272.14	-291.54	292.18	1.50	-1.50	0.00
Start 2513.45 hold at 3339.45 MD									
3,400.00	0.00	0.000	3,354.65	272.14	-291.54	292.18	0.00	0.00	0.00
3,500.00	0.00	0.000	3,454.65	272.14	-291.54	292.18	0.00	0.00	0.00
3,600.00	0.00	0.000	3,554.65	272.14	-291.54	292.18	0.00	0.00	0.00
3,700.00	0.00	0.000	3,654.65	272.14	-291.54	292.18	0.00	0.00	0.00
3,800.00	0.00	0.000	3,754.65	272.14	-291.54	292.18	0.00	0.00	0.00
3,900.00	0.00	0.000	3,854.65	272.14	-291.54	292.18	0.00	0.00	0.00
4,000.00	0.00	0.000	3,954.65	272.14	-291.54	292.18	0.00	0.00	0.00
4,100.00	0.00	0.000	4,054.65	272.14	-291.54	292.18	0.00	0.00	0.00
4,200.00	0.00	0.000	4,154.65	272.14	-291.54	292.18	0.00	0.00	0.00
4,300.00	0.00	0.000	4,254.65	272.14	-291.54	292.18	0.00	0.00	0.00
4,400.00	0.00	0.000	4,354.65	272.14	-291.54	292.18	0.00	0.00	0.00
4,500.00	0.00	0.000	4,454.65	272.14	-291.54	292.18	0.00	0.00	0.00

Database:	Casper District	Local Co-ordinate Reference:	Well Anschutz Equus Farms 4-62-29-5764C
Company:	Bill Barrett Corp.	TVD Reference:	GL 4635' & KB 20' @ 4655.00ft
Project:	Weld County, CO NAD 83	MD Reference:	GL 4635' & KB 20' @ 4655.00ft
Site:	Anschutz Equus Farms 4-62-28_27 SWSW Pad	North Reference:	True
Well:	Anschutz Equus Farms 4-62-29-5764C	Survey Calculation Method:	Minimum Curvature
Wellbore:	OH		
Design:	Plan 2		

Planned Survey

Measured Depth (ft)	Inclination (°)	Azimuth (°)	Vertical Depth (ft)	+N/-S (ft)	+E/-W (ft)	Vertical Section (ft)	Dogleg Rate (°/100ft)	Build Rate (°/100ft)	Turn Rate (°/100ft)
4,600.00	0.00	0.000	4,554.65	272.14	-291.54	292.18	0.00	0.00	0.00
4,700.00	0.00	0.000	4,654.65	272.14	-291.54	292.18	0.00	0.00	0.00
4,800.00	0.00	0.000	4,754.65	272.14	-291.54	292.18	0.00	0.00	0.00
4,900.00	0.00	0.000	4,854.65	272.14	-291.54	292.18	0.00	0.00	0.00
5,000.00	0.00	0.000	4,954.65	272.14	-291.54	292.18	0.00	0.00	0.00
5,100.00	0.00	0.000	5,054.65	272.14	-291.54	292.18	0.00	0.00	0.00
5,200.00	0.00	0.000	5,154.65	272.14	-291.54	292.18	0.00	0.00	0.00
5,300.00	0.00	0.000	5,254.65	272.14	-291.54	292.18	0.00	0.00	0.00
5,400.00	0.00	0.000	5,354.65	272.14	-291.54	292.18	0.00	0.00	0.00
5,500.00	0.00	0.000	5,454.65	272.14	-291.54	292.18	0.00	0.00	0.00
5,600.00	0.00	0.000	5,554.65	272.14	-291.54	292.18	0.00	0.00	0.00
5,700.00	0.00	0.000	5,654.65	272.14	-291.54	292.18	0.00	0.00	0.00
5,800.00	0.00	0.000	5,754.65	272.14	-291.54	292.18	0.00	0.00	0.00
5,852.90	0.00	0.000	5,807.55	272.14	-291.54	292.18	0.00	0.00	0.00
Start DLS 12.00 TFO 270.13									
5,900.00	5.65	270.134	5,854.58	272.15	-293.86	294.50	12.00	12.00	0.00
6,000.00	17.65	270.134	5,952.34	272.19	-314.02	314.66	12.00	12.00	0.00
6,100.00	29.65	270.134	6,043.77	272.29	-354.07	354.70	12.00	12.00	0.00
6,200.00	41.65	270.134	6,124.88	272.42	-412.25	412.88	12.00	12.00	0.00
6,300.00	53.65	270.134	6,192.12	272.59	-486.02	486.66	12.00	12.00	0.00
6,400.00	65.65	270.134	6,242.55	272.79	-572.16	572.80	12.00	12.00	0.00
6,500.00	77.65	270.134	6,273.97	273.02	-666.90	667.54	12.00	12.00	0.00
6,598.95	89.53	270.134	6,285.00	273.24	-765.06	765.70	12.00	12.00	0.00
Start 9691.41 hold at 6598.95 MD									
6,600.00	89.53	270.134	6,285.01	273.25	-766.11	766.75	0.00	0.00	0.00
6,700.00	89.53	270.134	6,285.83	273.48	-866.10	866.74	0.00	0.00	0.00
6,800.00	89.53	270.134	6,286.66	273.71	-966.10	966.74	0.00	0.00	0.00
6,900.00	89.53	270.134	6,287.48	273.95	-1,066.10	1,066.73	0.00	0.00	0.00
7,000.00	89.53	270.134	6,288.31	274.18	-1,166.09	1,166.73	0.00	0.00	0.00
7,100.00	89.53	270.134	6,289.13	274.41	-1,266.09	1,266.73	0.00	0.00	0.00
7,200.00	89.53	270.134	6,289.96	274.65	-1,366.09	1,366.72	0.00	0.00	0.00
7,300.00	89.53	270.134	6,290.79	274.88	-1,466.08	1,466.72	0.00	0.00	0.00
7,400.00	89.53	270.134	6,291.61	275.11	-1,566.08	1,566.72	0.00	0.00	0.00
7,500.00	89.53	270.134	6,292.44	275.35	-1,666.07	1,666.71	0.00	0.00	0.00
7,600.00	89.53	270.134	6,293.26	275.58	-1,766.07	1,766.71	0.00	0.00	0.00
7,700.00	89.53	270.134	6,294.09	275.81	-1,866.07	1,866.71	0.00	0.00	0.00
7,800.00	89.53	270.134	6,294.91	276.05	-1,966.06	1,966.70	0.00	0.00	0.00
7,900.00	89.53	270.134	6,295.74	276.28	-2,066.06	2,066.70	0.00	0.00	0.00
8,000.00	89.53	270.134	6,296.56	276.51	-2,166.06	2,166.70	0.00	0.00	0.00
8,100.00	89.53	270.134	6,297.39	276.75	-2,266.05	2,266.69	0.00	0.00	0.00
8,200.00	89.53	270.134	6,298.22	276.98	-2,366.05	2,366.69	0.00	0.00	0.00
8,300.00	89.53	270.134	6,299.04	277.21	-2,466.05	2,466.69	0.00	0.00	0.00
8,400.00	89.53	270.134	6,299.87	277.44	-2,566.04	2,566.68	0.00	0.00	0.00
8,500.00	89.53	270.134	6,300.69	277.68	-2,666.04	2,666.68	0.00	0.00	0.00
8,600.00	89.53	270.134	6,301.52	277.91	-2,766.03	2,766.68	0.00	0.00	0.00
8,700.00	89.53	270.134	6,302.34	278.14	-2,866.03	2,866.67	0.00	0.00	0.00
8,800.00	89.53	270.134	6,303.17	278.38	-2,966.03	2,966.67	0.00	0.00	0.00
8,900.00	89.53	270.134	6,303.99	278.61	-3,066.02	3,066.67	0.00	0.00	0.00
9,000.00	89.53	270.134	6,304.82	278.84	-3,166.02	3,166.66	0.00	0.00	0.00
9,100.00	89.53	270.134	6,305.64	279.08	-3,266.02	3,266.66	0.00	0.00	0.00
9,200.00	89.53	270.134	6,306.47	279.31	-3,366.01	3,366.66	0.00	0.00	0.00
9,300.00	89.53	270.134	6,307.30	279.54	-3,466.01	3,466.65	0.00	0.00	0.00
9,400.00	89.53	270.134	6,308.12	279.78	-3,566.01	3,566.65	0.00	0.00	0.00

Database:	Casper District	Local Co-ordinate Reference:	Well Anschutz Equus Farms 4-62-29-5764C
Company:	Bill Barrett Corp.	TVD Reference:	GL 4635' & KB 20' @ 4655.00ft
Project:	Weld County, CO NAD 83	MD Reference:	GL 4635' & KB 20' @ 4655.00ft
Site:	Anschutz Equus Farms 4-62-28_27 SWSW Pad	North Reference:	True
Well:	Anschutz Equus Farms 4-62-29-5764C	Survey Calculation Method:	Minimum Curvature
Wellbore:	OH		
Design:	Plan 2		

Planned Survey

Measured Depth (ft)	Inclination (°)	Azimuth (°)	Vertical Depth (ft)	+N/-S (ft)	+E/-W (ft)	Vertical Section (ft)	Dogleg Rate (°/100ft)	Build Rate (°/100ft)	Turn Rate (°/100ft)
9,500.00	89.53	270.134	6,308.95	280.01	-3,666.00	3,666.65	0.00	0.00	0.00
9,600.00	89.53	270.134	6,309.77	280.24	-3,766.00	3,766.64	0.00	0.00	0.00
9,700.00	89.53	270.134	6,310.60	280.48	-3,865.99	3,866.64	0.00	0.00	0.00
9,800.00	89.53	270.134	6,311.42	280.71	-3,965.99	3,966.64	0.00	0.00	0.00
9,900.00	89.53	270.134	6,312.25	280.94	-4,065.99	4,066.63	0.00	0.00	0.00
10,000.00	89.53	270.134	6,313.07	281.18	-4,165.98	4,166.63	0.00	0.00	0.00
10,100.00	89.53	270.134	6,313.90	281.41	-4,265.98	4,266.63	0.00	0.00	0.00
10,200.00	89.53	270.134	6,314.72	281.64	-4,365.98	4,366.62	0.00	0.00	0.00
10,300.00	89.53	270.134	6,315.55	281.88	-4,465.97	4,466.62	0.00	0.00	0.00
10,400.00	89.53	270.134	6,316.38	282.11	-4,565.97	4,566.62	0.00	0.00	0.00
10,500.00	89.53	270.134	6,317.20	282.34	-4,665.96	4,666.61	0.00	0.00	0.00
10,600.00	89.53	270.134	6,318.03	282.58	-4,765.96	4,766.61	0.00	0.00	0.00
10,700.00	89.53	270.134	6,318.85	282.81	-4,865.96	4,866.61	0.00	0.00	0.00
10,800.00	89.53	270.134	6,319.68	283.04	-4,965.95	4,966.60	0.00	0.00	0.00
10,900.00	89.53	270.134	6,320.50	283.28	-5,065.95	5,066.60	0.00	0.00	0.00
11,000.00	89.53	270.134	6,321.33	283.51	-5,165.95	5,166.60	0.00	0.00	0.00
11,100.00	89.53	270.134	6,322.15	283.74	-5,265.94	5,266.59	0.00	0.00	0.00
11,200.00	89.53	270.134	6,322.98	283.97	-5,365.94	5,366.59	0.00	0.00	0.00
11,300.00	89.53	270.134	6,323.81	284.21	-5,465.94	5,466.58	0.00	0.00	0.00
11,400.00	89.53	270.134	6,324.63	284.44	-5,565.93	5,566.58	0.00	0.00	0.00
11,500.00	89.53	270.134	6,325.46	284.67	-5,665.93	5,666.58	0.00	0.00	0.00
11,600.00	89.53	270.134	6,326.28	284.91	-5,765.92	5,766.57	0.00	0.00	0.00
11,700.00	89.53	270.134	6,327.11	285.14	-5,865.92	5,866.57	0.00	0.00	0.00
11,800.00	89.53	270.134	6,327.93	285.37	-5,965.92	5,966.57	0.00	0.00	0.00
11,900.00	89.53	270.134	6,328.76	285.61	-6,065.91	6,066.56	0.00	0.00	0.00
12,000.00	89.53	270.134	6,329.58	285.84	-6,165.91	6,166.56	0.00	0.00	0.00
12,100.00	89.53	270.134	6,330.41	286.07	-6,265.91	6,266.56	0.00	0.00	0.00
12,200.00	89.53	270.134	6,331.23	286.31	-6,365.90	6,366.55	0.00	0.00	0.00
12,300.00	89.53	270.134	6,332.06	286.54	-6,465.90	6,466.55	0.00	0.00	0.00
12,400.00	89.53	270.134	6,332.89	286.77	-6,565.89	6,566.55	0.00	0.00	0.00
12,500.00	89.53	270.134	6,333.71	287.01	-6,665.89	6,666.54	0.00	0.00	0.00
12,600.00	89.53	270.134	6,334.54	287.24	-6,765.89	6,766.54	0.00	0.00	0.00
12,700.00	89.53	270.134	6,335.36	287.47	-6,865.88	6,866.54	0.00	0.00	0.00
12,800.00	89.53	270.134	6,336.19	287.71	-6,965.88	6,966.53	0.00	0.00	0.00
12,900.00	89.53	270.134	6,337.01	287.94	-7,065.88	7,066.53	0.00	0.00	0.00
13,000.00	89.53	270.134	6,337.84	288.17	-7,165.87	7,166.53	0.00	0.00	0.00
13,100.00	89.53	270.134	6,338.66	288.41	-7,265.87	7,266.52	0.00	0.00	0.00
13,200.00	89.53	270.134	6,339.49	288.64	-7,365.87	7,366.52	0.00	0.00	0.00
13,300.00	89.53	270.134	6,340.32	288.87	-7,465.86	7,466.52	0.00	0.00	0.00
13,400.00	89.53	270.134	6,341.14	289.11	-7,565.86	7,566.51	0.00	0.00	0.00
13,500.00	89.53	270.134	6,341.97	289.34	-7,665.85	7,666.51	0.00	0.00	0.00
13,600.00	89.53	270.134	6,342.79	289.57	-7,765.85	7,766.51	0.00	0.00	0.00
13,700.00	89.53	270.134	6,343.62	289.81	-7,865.85	7,866.50	0.00	0.00	0.00
13,800.00	89.53	270.134	6,344.44	290.04	-7,965.84	7,966.50	0.00	0.00	0.00
13,900.00	89.53	270.134	6,345.27	290.27	-8,065.84	8,066.50	0.00	0.00	0.00
14,000.00	89.53	270.134	6,346.09	290.51	-8,165.84	8,166.49	0.00	0.00	0.00
14,100.00	89.53	270.134	6,346.92	290.74	-8,265.83	8,266.49	0.00	0.00	0.00
14,200.00	89.53	270.134	6,347.74	290.97	-8,365.83	8,366.49	0.00	0.00	0.00
14,300.00	89.53	270.134	6,348.57	291.20	-8,465.82	8,466.48	0.00	0.00	0.00
14,400.00	89.53	270.134	6,349.40	291.44	-8,565.82	8,566.48	0.00	0.00	0.00
14,500.00	89.53	270.134	6,350.22	291.67	-8,665.82	8,666.48	0.00	0.00	0.00
14,600.00	89.53	270.134	6,351.05	291.90	-8,765.81	8,766.47	0.00	0.00	0.00
14,700.00	89.53	270.134	6,351.87	292.14	-8,865.81	8,866.47	0.00	0.00	0.00

Database:	Casper District	Local Co-ordinate Reference:	Well Anschutz Equus Farms 4-62-29-5764C
Company:	Bill Barrett Corp.	TVD Reference:	GL 4635' & KB 20' @ 4655.00ft
Project:	Weld County, CO NAD 83	MD Reference:	GL 4635' & KB 20' @ 4655.00ft
Site:	Anschutz Equus Farms 4-62-28_27 SWSW Pad	North Reference:	True
Well:	Anschutz Equus Farms 4-62-29-5764C	Survey Calculation Method:	Minimum Curvature
Wellbore:	OH		
Design:	Plan 2		

Planned Survey										
Measured Depth (ft)	Inclination (°)	Azimuth (°)	Vertical Depth (ft)	+N/-S (ft)	+E/-W (ft)	Vertical Section (ft)	Dogleg Rate (°/100ft)	Build Rate (°/100ft)	Turn Rate (°/100ft)	
14,800.00	89.53	270.134	6,352.70	292.37	-8,965.81	8,966.47	0.00	0.00	0.00	
14,900.00	89.53	270.134	6,353.52	292.60	-9,065.80	9,066.46	0.00	0.00	0.00	
15,000.00	89.53	270.134	6,354.35	292.84	-9,165.80	9,166.46	0.00	0.00	0.00	
15,100.00	89.53	270.134	6,355.17	293.07	-9,265.80	9,266.46	0.00	0.00	0.00	
15,200.00	89.53	270.134	6,356.00	293.30	-9,365.79	9,366.45	0.00	0.00	0.00	
15,300.00	89.53	270.134	6,356.82	293.54	-9,465.79	9,466.45	0.00	0.00	0.00	
15,400.00	89.53	270.134	6,357.65	293.77	-9,565.78	9,566.45	0.00	0.00	0.00	
15,500.00	89.53	270.134	6,358.48	294.00	-9,665.78	9,666.44	0.00	0.00	0.00	
15,600.00	89.53	270.134	6,359.30	294.24	-9,765.78	9,766.44	0.00	0.00	0.00	
15,700.00	89.53	270.134	6,360.13	294.47	-9,865.77	9,866.44	0.00	0.00	0.00	
15,800.00	89.53	270.134	6,360.95	294.70	-9,965.77	9,966.43	0.00	0.00	0.00	
15,900.00	89.53	270.134	6,361.78	294.94	-10,065.77	10,066.43	0.00	0.00	0.00	
16,000.00	89.53	270.134	6,362.60	295.17	-10,165.76	10,166.42	0.00	0.00	0.00	
16,100.00	89.53	270.134	6,363.43	295.40	-10,265.76	10,266.42	0.00	0.00	0.00	
16,200.00	89.53	270.134	6,364.25	295.64	-10,365.76	10,366.42	0.00	0.00	0.00	
16,290.36	89.53	270.134	6,365.00	295.85	-10,456.11	10,456.78	0.00	0.00	0.00	
TD at 16290.36										

Design Targets									
Target Name	Dip Angle (°)	Dip Dir. (°)	TVD (ft)	+N/-S (ft)	+E/-W (ft)	Northing (usft)	Easting (usft)	Latitude	Longitude
4-62-29-5764C LP - hit/miss target - Shape - Point	0.00	0.000	6,285.00	273.25	-765.06	1,345,896.10	3,323,602.83	40° 16' 37.470 N	104° 20' 24.590 W
4-62-29-5764C PBHL - plan hits target center - Point	0.00	0.000	6,365.00	295.85	-10,456.11	1,345,791.65	3,313,912.34	40° 16' 37.672 N	104° 22' 29.629 W

Plan Annotations				
Measured Depth (ft)	Vertical Depth (ft)	+N/-S (ft)	+E/-W (ft)	Comment
1,000.00	1,000.00	0.00	0.00	Start Build 2.00
1,873.94	1,860.45	90.26	-96.69	Start 300.25 hold at 1873.94 MD
2,174.19	2,146.83	151.79	-162.62	Start Drop -1.50
3,339.45	3,294.10	272.14	-291.54	Start 2513.45 hold at 3339.45 MD
5,852.90	5,807.55	272.14	-291.54	Start DLS 12.00 TFO 270.13
6,598.95	6,285.00	273.24	-765.06	Start 9691.41 hold at 6598.95 MD
16,290.36	6,365.00	295.85	-10,456.11	TD at 16290.36