

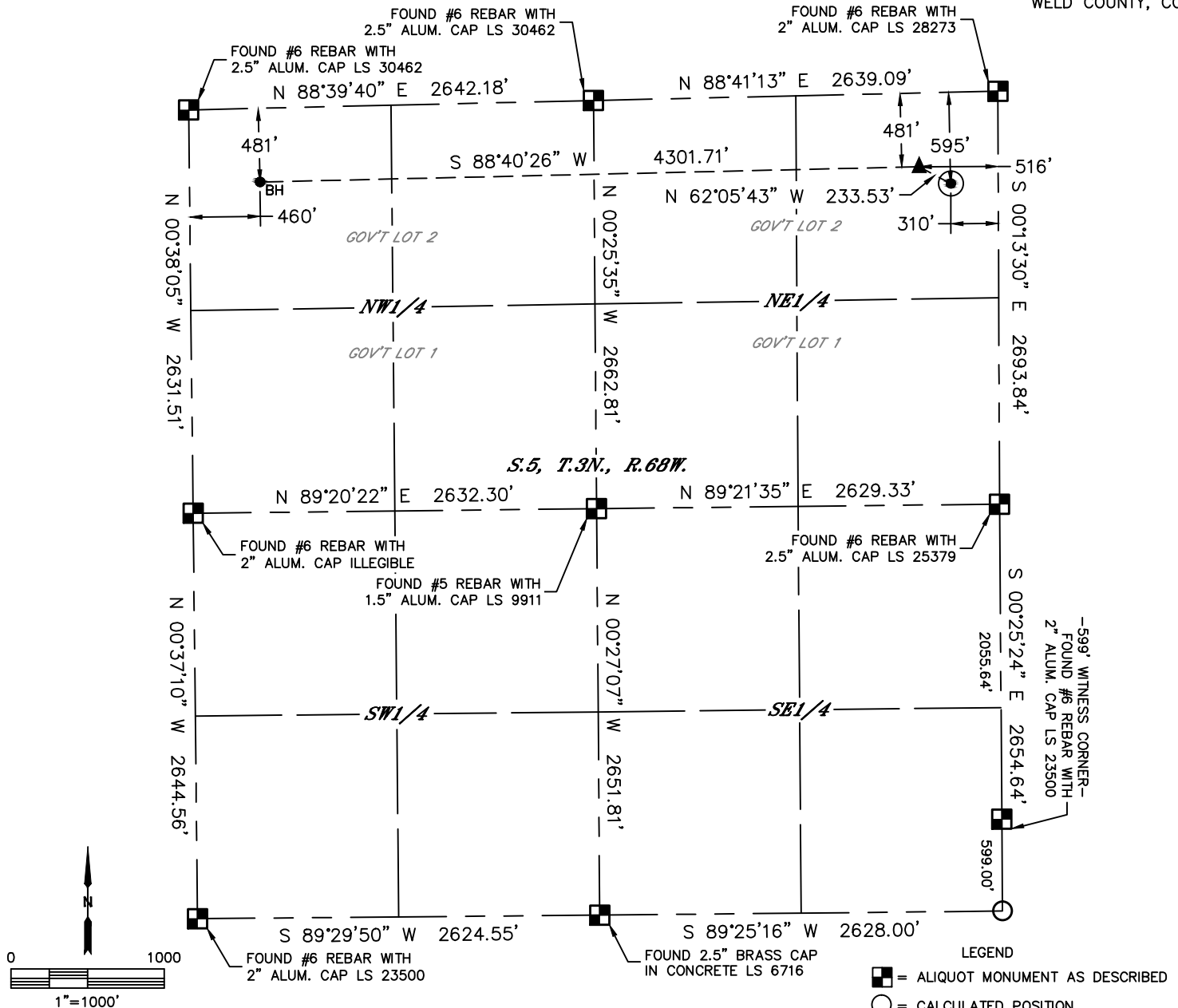


Lat40°, Inc. 6250 W. 10th Street, Unit 2, Greeley, CO 970-515-5294

WELL LOCATION CERTIFICATE

STILLROVEN FARM 3

SECTION: 5
TOWNSHIP: 3N
RANGE: 68W
6TH. P.M.
WELD COUNTY, CO

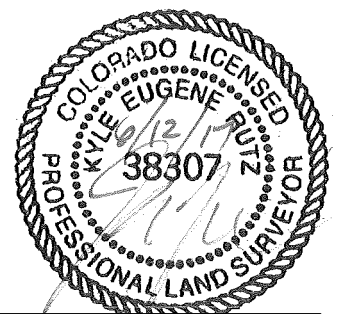


CLIENT: CAPTIVA ENERGY PARTNERS LLC						LANDMAN: PAUL ONSAGER			
INSTRUMENT OPERATOR: SCOTT SHERARD						SURVEY DATE: 5/8/2017		SURFACE USE: PASTURE	
SHL FOOTAGE				SHL LAT °	SHL LONG °	SHL PDOP	SHL ELEV (FT.)	SHL 1/4/1/4	SHL S-T-R
595	FNL	310	FEL	40.26067	-105.01881	2.1	5074	NENE	5-3-68

BHL FOOTAGE				BHL LAT °	BHL LONG °	BHL S-T-R	EP LAT °	EP LONG °	EP S-T-R
481	FNL	460	FWL	40.26076	-105.03495	5-3-68	40.26097	-105.01954	5-3-68

NEAREST CULTURAL ITEMS	
BUILDING	±619' NE
BUILDING UNIT	±619' NE
HIGH OCCUPANCY BUILDING UNIT	5280'+
DESIGNATED OUTSIDE ACTIVITY AREA	5280'+
PUBLIC ROAD (COUNTY ROAD 5)	±297' E
ABOVE GROUND UTILITY	±334' E
RAILROAD	5280'+
PROPERTY LINE	±310' E

NOTE:
1) Bearings shown are Grid Bearings of the Colorado State Plane Coordinate System, North Zone, North American Datum 1983. The lineal dimensions as contained herein are based upon the "U.S. Survey Foot."
2) Distances to section lines measured at 90 degrees from said section lines.
3) Ground elevations are based on an observed GPS elevation (NAVD 1988 DATUM).
4) Latitude and Longitude shown are (NAD 83 DATUM).
5) IMPROVEMENTS: See LOCATION DRAWING for all visible improvements within 500' of oil and gas location.
6) This map does not represent a boundary survey.



Kyle E. Rutz—On behalf of Lat40°, Inc.
Colorado Licensed Professional Land Surveyor No. 38307
DATE: 6/12/2017
PROJECT#: 2017042