

# **BISON OIL & GAS II, LLC**

**WELD COUNTY, COLORADO (NAD 83)**

**NW NE SEC. 27 T9N R60 W 6th P.M.**

**BASHOR 9-60 27B-34-2**

**ORIGINAL WELLBORE**

**03 July, 2017**

**Plan: PROPOSAL #1**

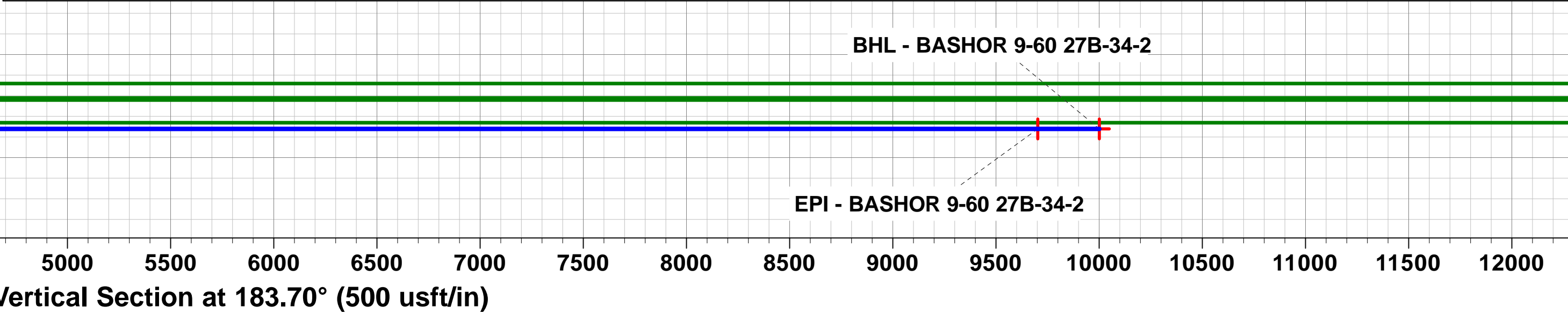
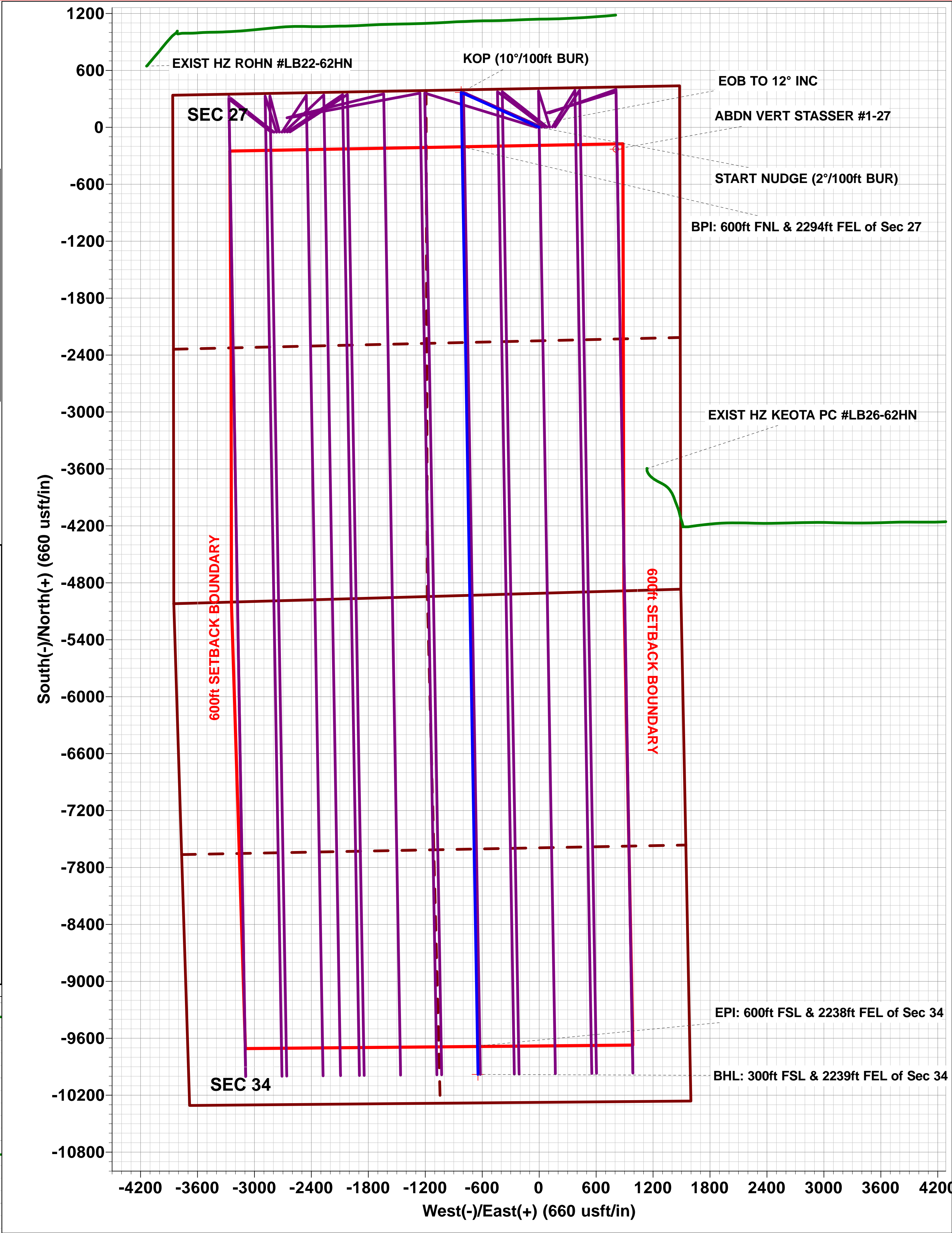
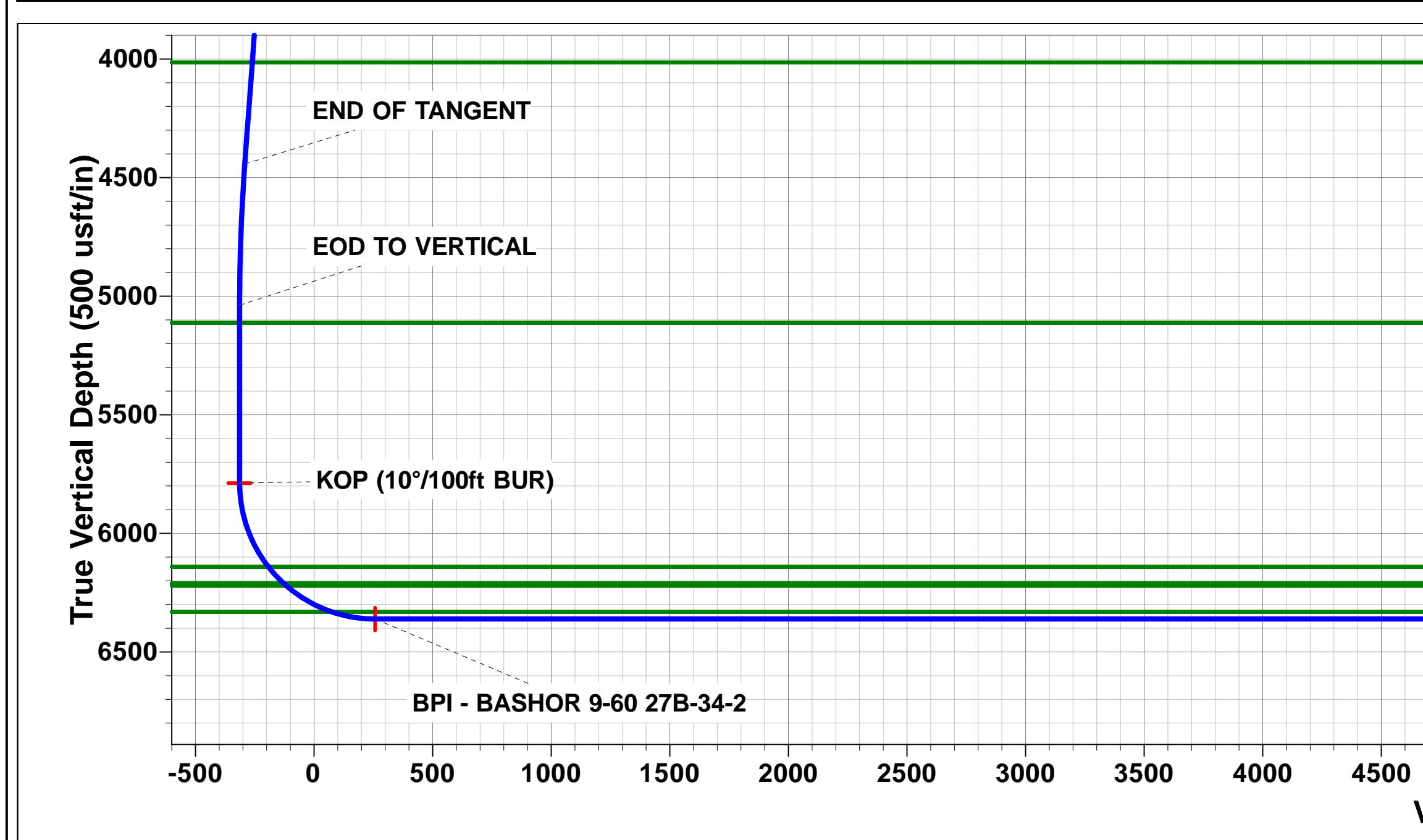
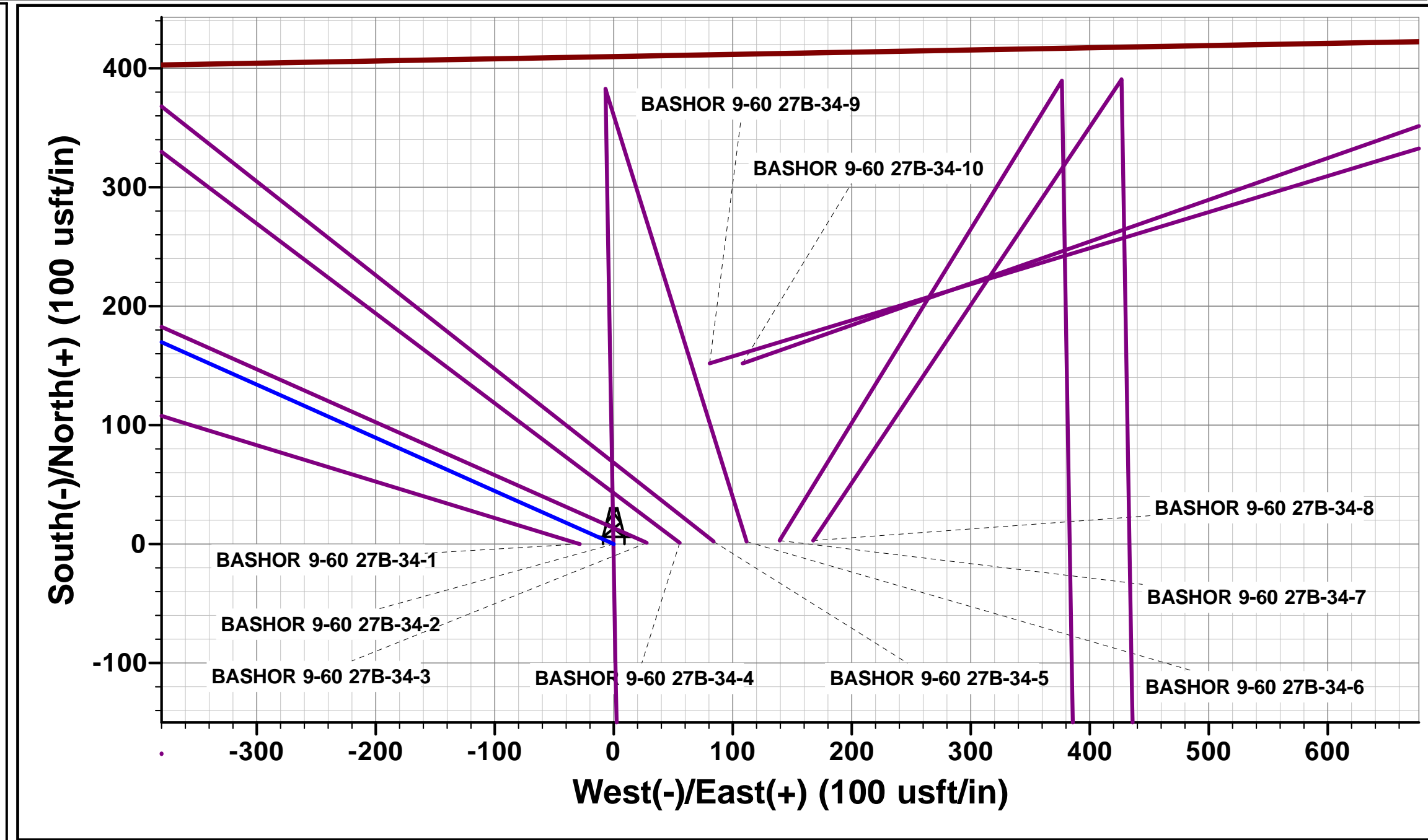
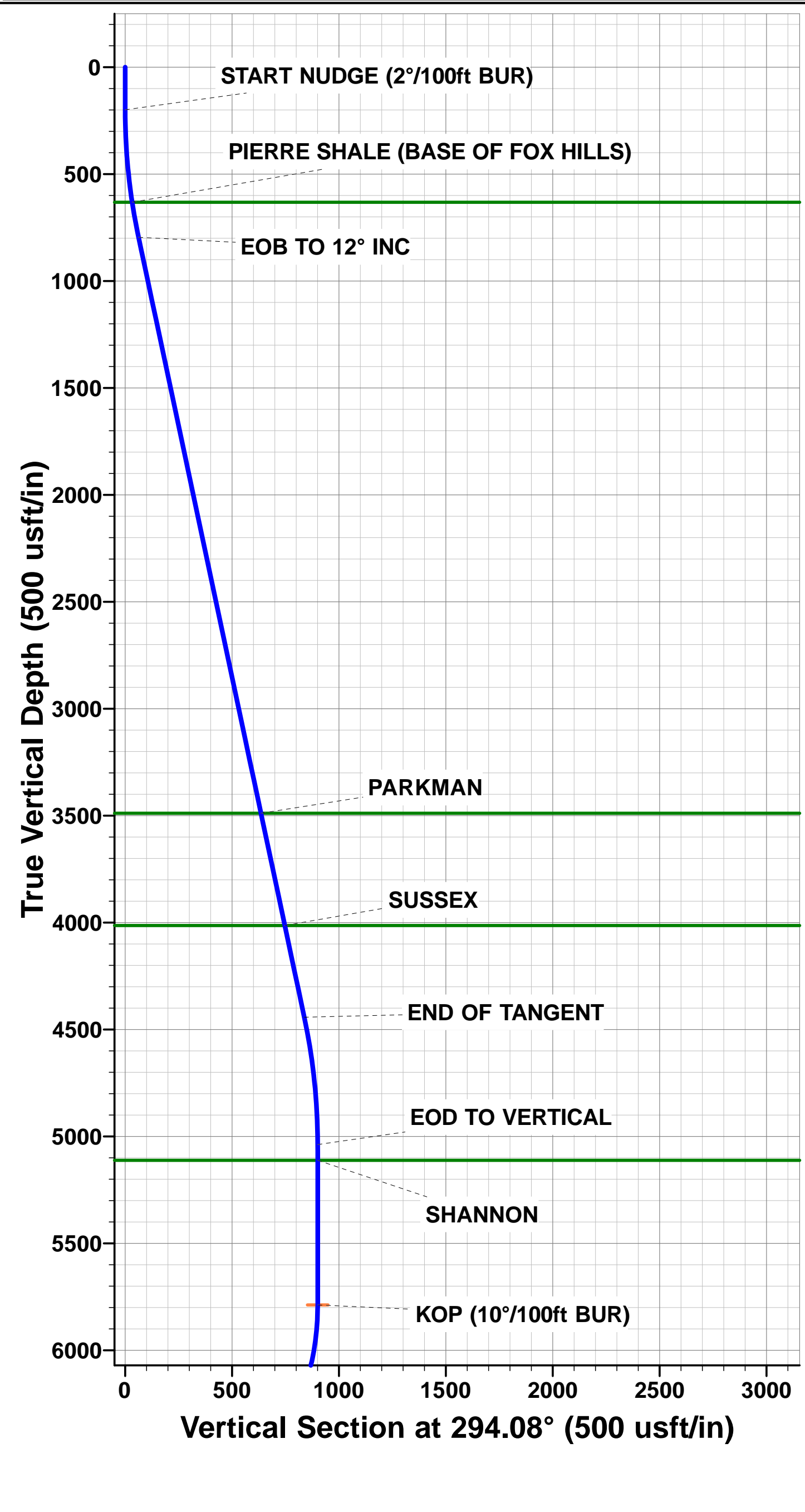




Project: WELD COUNTY, COLORADO (NAD 83)  
Site: NW NE SEC. 27 T9N R60 W 6th P.M.  
Well: BASHOR 9-60 27B-34-2  
Wellbore: ORIGINAL WELLBORE  
Design: PROPOSAL #1

ANNOTATIONS										PROPOSED LOCAL COORDINATES:  SHL: 410ft FNL & 1481ft FEL Sec 27  BPI: 600ft FNL & 2294ft FEL Sec 27  EPI: 600ft FSL & 2238ft FEL Sec 34  BHL: 300ft FSL & 2239ft FEL of Sec 34
TVD	MD	Inc	Azi	+N/-S	+E/-W	VSect	Dep	Annotation		
0.0	0.0	0.00	0.00	0.0	0.0	0.0	0.0	SHL: 410ft FNL & 1481ft FEL of Sec 27		
200.0	200.0	0.00	0.00	0.0	0.0	0.0	0.0	START NUDGE (2"/100ft BUR)		
795.7	800.1	12.00	294.08	25.5	-57.2	-21.8	62.6	EOB TO 12° INC		
4442.7	4528.6	12.00	294.08	341.9	-765.0	-291.8	837.9	END OF TANGENT		
5038.4	5128.7	0.00	0.00	367.4	-822.2	-313.6	900.6	EOD TO VERTICAL		
5788.4	5878.7	0.00	0.00	367.4	-822.2	-313.6	900.6	KOP (10"/100ft BUR)		
6361.3	6778.6	90.00	179.02	-205.5	-812.4	257.4	1473.5	BPI: 600ft FNL & 2294ft FEL of Sec 27		
6361.3	16255.5	90.00	179.02	-9681.0	-650.2	9702.8	10950.4	EPI: 600ft FSL & 2238ft FEL of Sec 34		
6361.3	16555.0	90.00	178.86	-9980.4	-644.7	10001.2	11249.9	BHL: 300ft FSL & 2239ft FEL of Sec 34		

WELLBORE TARGET DETAILS (LAT/LONG)					
Name	TVD	+N/-S	+E/-W	Latitude	Longitude
KOP - BASHOR 9-60 27B-34-2	5788.4	367.4	-822.2	40.728244	-104.077063
BHL - BASHOR 9-60 27B-34-2	6361.3	-9980.4	-644.7	40.699842	-104.076422
BPI - BASHOR 9-60 27B-34-2	6361.3	-205.5	-812.4	40.726672	-104.077028
EPI - BASHOR 9-60 27B-34-2	6361.3	-9681.0	-650.2	40.700664	-104.076442



# Planning Report



<b>Database:</b>	EDM 5000.1 Single User Db	<b>Local Co-ordinate Reference:</b>	Well BASHOR 9-60 27B-34-2
<b>Company:</b>	BISON OIL & GAS II, LLC	<b>TVD Reference:</b>	KB-EST @ 5017.3usft (Original Well Elev)
<b>Project:</b>	WELD COUNTY, COLORADO (NAD 83)	<b>MD Reference:</b>	KB-EST @ 5017.3usft (Original Well Elev)
<b>Site:</b>	NW NE SEC. 27 T9N R60 W 6th P.M.	<b>North Reference:</b>	True
<b>Well:</b>	BASHOR 9-60 27B-34-2	<b>Survey Calculation Method:</b>	Minimum Curvature
<b>Wellbore:</b>	ORIGINAL WELLBORE		
<b>Design:</b>	PROPOSAL #1		

<b>Project</b>	WELD COUNTY, COLORADO (NAD 83)		
<b>Map System:</b>	US State Plane 1983	<b>System Datum:</b>	Mean Sea Level
<b>Geo Datum:</b>	North American Datum 1983		
<b>Map Zone:</b>	Colorado Northern Zone		Using geodetic scale factor

<b>Site</b>	NW NE SEC. 27 T9N R60 W 6th P.M.		
<b>Site Position:</b>		<b>Northing:</b>	1,510,953.37 usft
<b>From:</b>	Lat/Long	<b>Easting:</b>	3,395,166.17 usft
<b>Position Uncertainty:</b>	0.0 usft	<b>Slot Radius:</b>	1.10000ft
		<b>Latitude:</b>	40.727236
		<b>Longitude:</b>	-104.074200
		<b>Grid Convergence:</b>	0.92 °

<b>Well</b>	BASHOR 9-60 27B-34-2		
<b>Well Position</b>	<b>+N/-S</b>	0.0 usft	<b>Northing:</b>
	<b>+E/-W</b>	28.5 usft	<b>Easting:</b>
<b>Position Uncertainty</b>	0.0 usft	<b>Wellhead Elevation:</b>	usft
		<b>Latitude:</b>	40.727236
		<b>Longitude:</b>	-104.074097
		<b>Ground Level:</b>	4,992.3 usft

<b>Wellbore</b>	ORIGINAL WELLBORE				
<b>Magnetics</b>	<b>Model Name</b>	<b>Sample Date</b>	<b>Declination (°)</b>	<b>Dip Angle (°)</b>	<b>Field Strength (nT)</b>
	IGRF2015	03/07/2017	7.86	67.22	52,625

<b>Design</b>	PROPOSAL #1			
<b>Audit Notes:</b>				
<b>Version:</b>	<b>Phase:</b>	PROTOTYPE	<b>Tie On Depth:</b>	0.0
<b>Vertical Section:</b>	<b>Depth From (TVD) (usft)</b>	<b>+N/-S (usft)</b>	<b>+E/-W (usft)</b>	<b>Direction (°)</b>
	6,361.3	0.0	0.0	183.70

<b>Plan Sections</b>											
MD (usft)	Inc (°)	Azi (°)	Vertical Depth	SS (usft)	+N/-S (usft)	+E/-W (usft)	Dogleg Rate (°/100usft)	Build Rate (°/100usft)	Turn Rate (°/100usft)	TFO (°)	Target
0.0	0.00	0.00	0.0	-5,017.3	0.0	0.0	0.00	0.00	0.00	0.00	
200.0	0.00	0.00	200.0	-4,817.3	0.0	0.0	0.00	0.00	0.00	0.00	
800.1	12.00	294.08	795.7	-4,221.6	25.5	-57.2	2.00	2.00	0.00	294.08	
4,528.6	12.00	294.08	4,442.7	-574.6	341.9	-765.0	0.00	0.00	0.00	0.00	
5,128.7	0.00	0.00	5,038.4	21.1	367.4	-822.2	2.00	-2.00	0.00	180.00	
5,878.7	0.00	0.00	5,788.4	771.1	367.4	-822.2	0.00	0.00	0.00	0.00	KOP - BASHOR 9-60
6,778.6	90.00	179.02	6,361.3	1,344.0	-205.5	-812.4	10.00	10.00	19.89	179.02	BPI - BASHOR 9-60
16,255.5	90.00	179.02	6,361.3	1,344.0	-9,681.0	-650.2	0.00	0.00	0.00	168.56	EPI - BASHOR 9-60
16,555.0	90.00	178.86	6,361.3	1,344.0	-9,980.4	-644.7	0.05	0.00	-0.05	-86.99	BHL - BASHOR 9-60

# Planning Report



<b>Database:</b>	EDM 5000.1 Single User Db	<b>Local Co-ordinate Reference:</b>	Well BASHOR 9-60 27B-34-2
<b>Company:</b>	BISON OIL & GAS II, LLC	<b>TVD Reference:</b>	KB-EST @ 5017.3usft (Original Well Elev)
<b>Project:</b>	WELD COUNTY, COLORADO (NAD 83)	<b>MD Reference:</b>	KB-EST @ 5017.3usft (Original Well Elev)
<b>Site:</b>	NW NE SEC. 27 T9N R60 W 6th P.M.	<b>North Reference:</b>	True
<b>Well:</b>	BASHOR 9-60 27B-34-2	<b>Survey Calculation Method:</b>	Minimum Curvature
<b>Wellbore:</b>	ORIGINAL WELLBORE		
<b>Design:</b>	PROPOSAL #1		

## Planned Survey

MD (usft)	Inc (°)	Azi (°)	TVD (usft)	SS (usft)	+N/-S (usft)	+E/-W (usft)	Vertical Section (usft)	Dogleg Rate (°/100usft)	Build Rate (°/100usft)	Turn Rate (°/100usft)
<b>SHL: 410ft FNL &amp; 1481ft FEL of Sec 27</b>										
0.0	0.00	0.00	0.0	5,017.30	0.0	0.0	0.0	0.00	0.00	0.00
100.0	0.00	0.00	100.0	4,917.30	0.0	0.0	0.0	0.00	0.00	0.00
<b>START NUDGE (2°/100ft BUR)</b>										
200.0	0.00	0.00	200.0	4,817.30	0.0	0.0	0.0	0.00	0.00	0.00
300.0	2.00	294.08	300.0	4,717.32	0.7	-1.6	-0.6	2.00	2.00	0.00
400.0	4.00	294.08	399.8	4,617.46	2.8	-6.4	-2.4	2.00	2.00	0.00
500.0	6.00	294.08	499.5	4,517.85	6.4	-14.3	-5.5	2.00	2.00	0.00
600.0	8.00	294.08	598.7	4,418.60	11.4	-25.5	-9.7	2.00	2.00	0.00
<b>PIERRE SHALE (BASE OF FOX HILLS)</b>										
634.0	8.68	294.08	632.3	4,385.00	13.4	-30.0	-11.4	2.00	2.00	0.00
700.0	10.00	294.08	697.5	4,319.83	17.8	-39.7	-15.2	2.00	2.00	0.00
800.0	12.00	294.08	795.6	4,221.68	25.5	-57.2	-21.8	2.00	2.00	0.00
<b>EOB TO 12° INC</b>										
800.1	12.00	294.08	795.7	4,221.59	25.5	-57.2	-21.8	2.00	2.00	0.00
900.0	12.00	294.08	893.4	4,123.86	34.0	-76.1	-29.0	0.00	0.00	0.00
1,000.0	12.00	294.08	991.3	4,026.05	42.5	-95.1	-36.3	0.00	0.00	0.00
1,100.0	12.00	294.08	1,089.1	3,928.23	51.0	-114.1	-43.5	0.00	0.00	0.00
1,200.0	12.00	294.08	1,186.9	3,830.42	59.5	-133.1	-50.8	0.00	0.00	0.00
1,300.0	12.00	294.08	1,284.7	3,732.61	68.0	-152.1	-58.0	0.00	0.00	0.00
1,400.0	12.00	294.08	1,382.5	3,634.79	76.4	-171.1	-65.3	0.00	0.00	0.00
1,500.0	12.00	294.08	1,480.3	3,536.98	84.9	-190.1	-72.5	0.00	0.00	0.00
1,600.0	12.00	294.08	1,578.1	3,439.16	93.4	-209.0	-79.7	0.00	0.00	0.00
1,700.0	12.00	294.08	1,675.9	3,341.35	101.9	-228.0	-87.0	0.00	0.00	0.00
1,800.0	12.00	294.08	1,773.8	3,243.54	110.4	-247.0	-94.2	0.00	0.00	0.00
1,900.0	12.00	294.08	1,871.6	3,145.72	118.9	-266.0	-101.5	0.00	0.00	0.00
2,000.0	12.00	294.08	1,969.4	3,047.91	127.3	-285.0	-108.7	0.00	0.00	0.00
2,100.0	12.00	294.08	2,067.2	2,950.09	135.8	-304.0	-115.9	0.00	0.00	0.00
2,200.0	12.00	294.08	2,165.0	2,852.28	144.3	-322.9	-123.2	0.00	0.00	0.00
2,300.0	12.00	294.08	2,262.8	2,754.47	152.8	-341.9	-130.4	0.00	0.00	0.00
2,400.0	12.00	294.08	2,360.6	2,656.65	161.3	-360.9	-137.7	0.00	0.00	0.00
2,500.0	12.00	294.08	2,458.5	2,558.84	169.8	-379.9	-144.9	0.00	0.00	0.00
2,600.0	12.00	294.08	2,556.3	2,461.02	178.2	-398.9	-152.2	0.00	0.00	0.00
2,700.0	12.00	294.08	2,654.1	2,363.21	186.7	-417.9	-159.4	0.00	0.00	0.00
2,800.0	12.00	294.08	2,751.9	2,265.39	195.2	-436.9	-166.6	0.00	0.00	0.00
2,900.0	12.00	294.08	2,849.7	2,167.58	203.7	-455.8	-173.9	0.00	0.00	0.00
3,000.0	12.00	294.08	2,947.5	2,069.77	212.2	-474.8	-181.1	0.00	0.00	0.00
3,100.0	12.00	294.08	3,045.3	1,971.95	220.7	-493.8	-188.4	0.00	0.00	0.00
3,200.0	12.00	294.08	3,143.2	1,874.14	229.1	-512.8	-195.6	0.00	0.00	0.00
3,300.0	12.00	294.08	3,241.0	1,776.32	237.6	-531.8	-202.9	0.00	0.00	0.00
3,400.0	12.00	294.08	3,338.8	1,678.51	246.1	-550.8	-210.1	0.00	0.00	0.00
3,500.0	12.00	294.08	3,436.6	1,580.70	254.6	-569.8	-217.3	0.00	0.00	0.00
<b>PARKMAN</b>										
3,553.9	12.00	294.08	3,489.3	1,528.00	259.2	-580.0	-221.2	0.00	0.00	0.00
3,600.0	12.00	294.08	3,534.4	1,482.88	263.1	-588.7	-224.6	0.00	0.00	0.00
3,700.0	12.00	294.08	3,632.2	1,385.07	271.6	-607.7	-231.8	0.00	0.00	0.00
3,800.0	12.00	294.08	3,730.0	1,287.25	280.0	-626.7	-239.1	0.00	0.00	0.00
3,900.0	12.00	294.08	3,827.9	1,189.44	288.5	-645.7	-246.3	0.00	0.00	0.00
4,000.0	12.00	294.08	3,925.7	1,091.63	297.0	-664.7	-253.5	0.00	0.00	0.00
<b>SUSSEX</b>										
4,090.6	12.00	294.08	4,014.3	1,003.00	304.7	-681.9	-260.1	0.00	0.00	0.00
4,100.0	12.00	294.08	4,023.5	993.81	305.5	-683.7	-260.8	0.00	0.00	0.00
4,200.0	12.00	294.08	4,121.3	896.00	314.0	-702.6	-268.0	0.00	0.00	0.00



# Planning Report



<b>Database:</b>	EDM 5000.1 Single User Db	<b>Local Co-ordinate Reference:</b>	Well BASHOR 9-60 27B-34-2
<b>Company:</b>	BISON OIL & GAS II, LLC	<b>TVD Reference:</b>	KB-EST @ 5017.3usft (Original Well Elev)
<b>Project:</b>	WELD COUNTY, COLORADO (NAD 83)	<b>MD Reference:</b>	KB-EST @ 5017.3usft (Original Well Elev)
<b>Site:</b>	NW NE SEC. 27 T9N R60 W 6th P.M.	<b>North Reference:</b>	True
<b>Well:</b>	BASHOR 9-60 27B-34-2	<b>Survey Calculation Method:</b>	Minimum Curvature
<b>Wellbore:</b>	ORIGINAL WELLBORE		
<b>Design:</b>	PROPOSAL #1		

## Planned Survey

MD (usft)	Inc (°)	Azi (°)	TVD (usft)	SS (usft)	+N/-S (usft)	+E/-W (usft)	Vertical Section (usft)	Dogleg Rate (°/100usft)	Build Rate (°/100usft)	Turn Rate (°/100usft)
4,300.0	12.00	294.08	4,219.1	798.18	322.5	-721.6	-275.3	0.00	0.00	0.00
4,400.0	12.00	294.08	4,316.9	700.37	330.9	-740.6	-282.5	0.00	0.00	0.00
4,500.0	12.00	294.08	4,414.7	602.56	339.4	-759.6	-289.8	0.00	0.00	0.00
<b>END OF TANGENT</b>										
<b>4,528.6</b>	<b>12.00</b>	<b>294.08</b>	<b>4,442.7</b>	<b>574.61</b>	<b>341.9</b>	<b>-765.0</b>	<b>-291.8</b>	<b>0.00</b>	<b>0.00</b>	<b>0.00</b>
4,600.0	10.57	294.08	4,512.7	504.56	347.6	-777.8	-296.7	2.00	-2.00	0.00
4,700.0	8.57	294.08	4,611.3	405.96	354.3	-793.0	-302.5	2.00	-2.00	0.00
4,800.0	6.57	294.08	4,710.5	306.84	359.7	-805.0	-307.1	2.00	-2.00	0.00
4,900.0	4.57	294.08	4,810.0	207.32	363.7	-813.9	-310.5	2.00	-2.00	0.00
5,000.0	2.57	294.08	4,909.8	107.52	366.2	-819.6	-312.6	2.00	-2.00	0.00
5,100.0	0.57	294.08	5,009.7	7.56	367.3	-822.1	-313.6	2.00	-2.00	0.00
<b>EOD TO VERTICAL</b>										
<b>5,128.7</b>	<b>0.00</b>	<b>0.00</b>	<b>5,038.4</b>	<b>-21.10</b>	<b>367.4</b>	<b>-822.2</b>	<b>-313.6</b>	<b>2.00</b>	<b>-2.00</b>	<b>0.00</b>
5,200.0	0.00	0.00	5,109.7	-92.44	367.4	-822.2	-313.6	0.00	0.00	0.00
<b>SHANNON</b>										
<b>5,202.6</b>	<b>0.00</b>	<b>0.00</b>	<b>5,112.3</b>	<b>-95.00</b>	<b>367.4</b>	<b>-822.2</b>	<b>-313.6</b>	<b>0.00</b>	<b>0.00</b>	<b>0.00</b>
5,300.0	0.00	0.00	5,209.7	-192.44	367.4	-822.2	-313.6	0.00	0.00	0.00
5,400.0	0.00	0.00	5,309.7	-292.44	367.4	-822.2	-313.6	0.00	0.00	0.00
5,500.0	0.00	0.00	5,409.7	-392.44	367.4	-822.2	-313.6	0.00	0.00	0.00
5,600.0	0.00	0.00	5,509.7	-492.44	367.4	-822.2	-313.6	0.00	0.00	0.00
5,700.0	0.00	0.00	5,609.7	-592.44	367.4	-822.2	-313.6	0.00	0.00	0.00
5,800.0	0.00	0.00	5,709.7	-692.44	367.4	-822.2	-313.6	0.00	0.00	0.00
<b>KOP (10°/100ft BUR)</b>										
<b>5,878.7</b>	<b>0.00</b>	<b>0.00</b>	<b>5,788.4</b>	<b>-771.10</b>	<b>367.4</b>	<b>-822.2</b>	<b>-313.6</b>	<b>0.00</b>	<b>0.00</b>	<b>0.00</b>
5,900.0	2.13	179.02	5,809.7	-792.44	367.0	-822.2	-313.2	10.00	10.00	0.00
6,000.0	12.14	179.02	5,908.8	-891.54	354.6	-822.0	-300.9	10.00	10.00	0.00
6,100.0	22.14	179.02	6,004.3	-986.98	325.2	-821.5	-271.5	10.00	10.00	0.00
6,200.0	32.14	179.02	6,093.2	-1,075.85	279.6	-820.7	-226.1	10.00	10.00	0.00
<b>SHARON SPRINGS SHALE</b>										
<b>6,258.9</b>	<b>38.02</b>	<b>179.02</b>	<b>6,141.3</b>	<b>-1,124.00</b>	<b>245.8</b>	<b>-820.1</b>	<b>-192.4</b>	<b>10.00</b>	<b>10.00</b>	<b>0.00</b>
6,300.0	42.14	179.02	6,172.8	-1,155.47	219.3	-819.7	-166.1	10.00	10.00	0.00
<b>NIORARA FORMATION</b>										
<b>6,354.4</b>	<b>47.58</b>	<b>179.02</b>	<b>6,211.3</b>	<b>-1,194.00</b>	<b>181.0</b>	<b>-819.0</b>	<b>-127.8</b>	<b>10.00</b>	<b>10.00</b>	<b>0.00</b>
<b>NIORARA A CHALK</b>										
<b>6,369.4</b>	<b>49.08</b>	<b>179.02</b>	<b>6,221.3</b>	<b>-1,204.00</b>	<b>169.8</b>	<b>-818.8</b>	<b>-116.6</b>	<b>10.00</b>	<b>10.00</b>	<b>0.00</b>
6,400.0	52.14	179.02	6,240.7	-1,223.41	146.1	-818.4	-93.1	10.00	10.00	0.00
6,500.0	62.14	179.02	6,294.9	-1,277.60	62.3	-817.0	-9.5	10.00	10.00	0.00
<b>NIORARA B CHALK</b>										
<b>6,592.3</b>	<b>71.38</b>	<b>179.02</b>	<b>6,331.3</b>	<b>-1,314.00</b>	<b>-22.5</b>	<b>-815.5</b>	<b>75.0</b>	<b>10.00</b>	<b>10.00</b>	<b>0.00</b>
6,600.0	72.14	179.02	6,333.7	-1,316.40	-29.8	-815.4	82.2	10.00	10.00	0.00
6,700.0	82.14	179.02	6,355.9	-1,338.62	-127.1	-813.7	179.3	10.00	10.00	0.00
<b>BPI: 600ft FNL &amp; 2294ft FEL of Sec 27</b>										
<b>6,778.6</b>	<b>90.00</b>	<b>179.02</b>	<b>6,361.3</b>	<b>-1,344.00</b>	<b>-205.5</b>	<b>-812.4</b>	<b>257.4</b>	<b>10.00</b>	<b>10.00</b>	<b>0.00</b>
6,800.0	90.00	179.02	6,361.3	-1,344.00	-226.8	-812.0	278.7	0.00	0.00	0.00
6,900.0	90.00	179.02	6,361.3	-1,343.99	-326.8	-810.3	378.4	0.00	0.00	0.00
7,000.0	90.00	179.02	6,361.3	-1,343.98	-426.8	-808.6	478.0	0.00	0.00	0.00
7,100.0	90.00	179.02	6,361.3	-1,343.98	-526.8	-806.9	577.7	0.00	0.00	0.00
7,200.0	90.00	179.02	6,361.3	-1,343.97	-626.8	-805.2	677.4	0.00	0.00	0.00
7,300.0	90.00	179.02	6,361.3	-1,343.96	-726.8	-803.5	777.1	0.00	0.00	0.00
7,400.0	90.00	179.02	6,361.3	-1,343.96	-826.8	-801.7	876.7	0.00	0.00	0.00
7,500.0	90.00	179.02	6,361.3	-1,343.95	-926.7	-800.0	976.4	0.00	0.00	0.00
7,600.0	90.00	179.02	6,361.2	-1,343.95	-1,026.7	-798.3	1,076.1	0.00	0.00	0.00
7,700.0	90.00	179.02	6,361.2	-1,343.94	-1,126.7	-796.6	1,175.7	0.00	0.00	0.00

# Planning Report



<b>Database:</b>	EDM 5000.1 Single User Db	<b>Local Co-ordinate Reference:</b>	Well BASHOR 9-60 27B-34-2
<b>Company:</b>	BISON OIL & GAS II, LLC	<b>TVD Reference:</b>	KB-EST @ 5017.3usft (Original Well Elev)
<b>Project:</b>	WELD COUNTY, COLORADO (NAD 83)	<b>MD Reference:</b>	KB-EST @ 5017.3usft (Original Well Elev)
<b>Site:</b>	NW NE SEC. 27 T9N R60 W 6th P.M.	<b>North Reference:</b>	True
<b>Well:</b>	BASHOR 9-60 27B-34-2	<b>Survey Calculation Method:</b>	Minimum Curvature
<b>Wellbore:</b>	ORIGINAL WELLBORE		
<b>Design:</b>	PROPOSAL #1		

Planned Survey										
MD (usft)	Inc (°)	Azi (°)	TVD (usft)	SS (usft)	+N/-S (usft)	+E/-W (usft)	Vertical Section (usft)	Dogleg Rate (°/100usft)	Build Rate (°/100usft)	Turn Rate (°/100usft)
7,800.0	90.00	179.02	6,361.2	-1,343.93	-1,226.7	-794.9	1,275.4	0.00	0.00	0.00
7,900.0	90.00	179.02	6,361.2	-1,343.93	-1,326.7	-793.2	1,375.1	0.00	0.00	0.00
8,000.0	90.00	179.02	6,361.2	-1,343.92	-1,426.7	-791.5	1,474.7	0.00	0.00	0.00
8,100.0	90.00	179.02	6,361.2	-1,343.92	-1,526.7	-789.8	1,574.4	0.00	0.00	0.00
8,200.0	90.00	179.02	6,361.2	-1,343.91	-1,626.6	-788.0	1,674.1	0.00	0.00	0.00
8,300.0	90.00	179.02	6,361.2	-1,343.91	-1,726.6	-786.3	1,773.7	0.00	0.00	0.00
8,400.0	90.00	179.02	6,361.2	-1,343.90	-1,826.6	-784.6	1,873.4	0.00	0.00	0.00
8,500.0	90.00	179.02	6,361.2	-1,343.90	-1,926.6	-782.9	1,973.1	0.00	0.00	0.00
8,600.0	90.00	179.02	6,361.2	-1,343.89	-2,026.6	-781.2	2,072.7	0.00	0.00	0.00
8,700.0	90.00	179.02	6,361.2	-1,343.89	-2,126.6	-779.5	2,172.4	0.00	0.00	0.00
8,800.0	90.00	179.02	6,361.2	-1,343.88	-2,226.6	-777.8	2,272.1	0.00	0.00	0.00
8,900.0	90.00	179.02	6,361.2	-1,343.88	-2,326.5	-776.1	2,371.7	0.00	0.00	0.00
9,000.0	90.00	179.02	6,361.2	-1,343.88	-2,426.5	-774.3	2,471.4	0.00	0.00	0.00
9,100.0	90.00	179.02	6,361.2	-1,343.87	-2,526.5	-772.6	2,571.1	0.00	0.00	0.00
9,200.0	90.00	179.02	6,361.2	-1,343.87	-2,626.5	-770.9	2,670.7	0.00	0.00	0.00
9,300.0	90.00	179.02	6,361.2	-1,343.86	-2,726.5	-769.2	2,770.4	0.00	0.00	0.00
9,400.0	90.00	179.02	6,361.2	-1,343.86	-2,826.5	-767.5	2,870.1	0.00	0.00	0.00
9,500.0	90.00	179.02	6,361.2	-1,343.86	-2,926.4	-765.8	2,969.7	0.00	0.00	0.00
9,600.0	90.00	179.02	6,361.2	-1,343.85	-3,026.4	-764.1	3,069.4	0.00	0.00	0.00
9,700.0	90.00	179.02	6,361.2	-1,343.85	-3,126.4	-762.4	3,169.1	0.00	0.00	0.00
9,800.0	90.00	179.02	6,361.1	-1,343.85	-3,226.4	-760.7	3,268.7	0.00	0.00	0.00
9,900.0	90.00	179.02	6,361.1	-1,343.85	-3,326.4	-758.9	3,368.4	0.00	0.00	0.00
10,000.0	90.00	179.02	6,361.1	-1,343.84	-3,426.4	-757.2	3,468.1	0.00	0.00	0.00
10,100.0	90.00	179.02	6,361.1	-1,343.84	-3,526.4	-755.5	3,567.7	0.00	0.00	0.00
10,200.0	90.00	179.02	6,361.1	-1,343.84	-3,626.3	-753.8	3,667.4	0.00	0.00	0.00
10,300.0	90.00	179.02	6,361.1	-1,343.84	-3,726.3	-752.1	3,767.1	0.00	0.00	0.00
10,400.0	90.00	179.02	6,361.1	-1,343.84	-3,826.3	-750.4	3,866.7	0.00	0.00	0.00
10,500.0	90.00	179.02	6,361.1	-1,343.83	-3,926.3	-748.7	3,966.4	0.00	0.00	0.00
10,600.0	90.00	179.02	6,361.1	-1,343.83	-4,026.3	-747.0	4,066.1	0.00	0.00	0.00
10,700.0	90.00	179.02	6,361.1	-1,343.83	-4,126.3	-745.2	4,165.7	0.00	0.00	0.00
10,800.0	90.00	179.02	6,361.1	-1,343.83	-4,226.3	-743.5	4,265.4	0.00	0.00	0.00
10,900.0	90.00	179.02	6,361.1	-1,343.83	-4,326.2	-741.8	4,365.1	0.00	0.00	0.00
11,000.0	90.00	179.02	6,361.1	-1,343.83	-4,426.2	-740.1	4,464.7	0.00	0.00	0.00
11,100.0	90.00	179.02	6,361.1	-1,343.83	-4,526.2	-738.4	4,564.4	0.00	0.00	0.00
11,200.0	90.00	179.02	6,361.1	-1,343.83	-4,626.2	-736.7	4,664.1	0.00	0.00	0.00
11,300.0	90.00	179.02	6,361.1	-1,343.83	-4,726.2	-735.0	4,763.7	0.00	0.00	0.00
11,400.0	90.00	179.02	6,361.1	-1,343.83	-4,826.2	-733.3	4,863.4	0.00	0.00	0.00
11,500.0	90.00	179.02	6,361.1	-1,343.83	-4,926.2	-731.6	4,963.1	0.00	0.00	0.00
11,600.0	90.00	179.02	6,361.1	-1,343.83	-5,026.1	-729.8	5,062.7	0.00	0.00	0.00
11,700.0	90.00	179.02	6,361.1	-1,343.83	-5,126.1	-728.1	5,162.4	0.00	0.00	0.00
11,800.0	90.00	179.02	6,361.1	-1,343.83	-5,226.1	-726.4	5,262.1	0.00	0.00	0.00
11,900.0	90.00	179.02	6,361.1	-1,343.83	-5,326.1	-724.7	5,361.7	0.00	0.00	0.00
12,000.0	90.00	179.02	6,361.1	-1,343.83	-5,426.1	-723.0	5,461.4	0.00	0.00	0.00
12,100.0	90.00	179.02	6,361.1	-1,343.83	-5,526.1	-721.3	5,561.1	0.00	0.00	0.00
12,200.0	90.00	179.02	6,361.1	-1,343.83	-5,626.1	-719.6	5,660.7	0.00	0.00	0.00
12,300.0	90.00	179.02	6,361.1	-1,343.83	-5,726.0	-717.9	5,760.4	0.00	0.00	0.00
12,400.0	90.00	179.02	6,361.1	-1,343.83	-5,826.0	-716.2	5,860.1	0.00	0.00	0.00
12,500.0	90.00	179.02	6,361.1	-1,343.83	-5,926.0	-714.4	5,959.7	0.00	0.00	0.00
12,600.0	90.00	179.02	6,361.1	-1,343.84	-6,026.0	-712.7	6,059.4	0.00	0.00	0.00
12,700.0	90.00	179.02	6,361.1	-1,343.84	-6,126.0	-711.0	6,159.1	0.00	0.00	0.00
12,800.0	90.00	179.02	6,361.1	-1,343.84	-6,226.0	-709.3	6,258.7	0.00	0.00	0.00
12,900.0	90.00	179.02	6,361.1	-1,343.84	-6,326.0	-707.6	6,358.4	0.00	0.00	0.00
13,000.0	90.00	179.02	6,361.1	-1,343.84	-6,425.9	-705.9	6,458.1	0.00	0.00	0.00
13,100.0	90.00	179.02	6,361.1	-1,343.85	-6,525.9	-704.2	6,557.7	0.00	0.00	0.00

# Planning Report



<b>Database:</b>	EDM 5000.1 Single User Db	<b>Local Co-ordinate Reference:</b>	Well BASHOR 9-60 27B-34-2
<b>Company:</b>	BISON OIL & GAS II, LLC	<b>TVD Reference:</b>	KB-EST @ 5017.3usft (Original Well Elev)
<b>Project:</b>	WELD COUNTY, COLORADO (NAD 83)	<b>MD Reference:</b>	KB-EST @ 5017.3usft (Original Well Elev)
<b>Site:</b>	NW NE SEC. 27 T9N R60 W 6th P.M.	<b>North Reference:</b>	True
<b>Well:</b>	BASHOR 9-60 27B-34-2	<b>Survey Calculation Method:</b>	Minimum Curvature
<b>Wellbore:</b>	ORIGINAL WELLBORE		
<b>Design:</b>	PROPOSAL #1		

Planned Survey										
MD (usft)	Inc (°)	Azi (°)	TVD (usft)	SS (usft)	+N/-S (usft)	+E/-W (usft)	Vertical Section (usft)	Dogleg Rate (°/100usft)	Build Rate (°/100usft)	Turn Rate (°/100usft)
13,200.0	90.00	179.02	6,361.1	-1,343.85	-6,625.9	-702.5	6,657.4	0.00	0.00	0.00
13,300.0	90.00	179.02	6,361.2	-1,343.85	-6,725.9	-700.8	6,757.1	0.00	0.00	0.00
13,400.0	90.00	179.02	6,361.2	-1,343.85	-6,825.9	-699.1	6,856.7	0.00	0.00	0.00
13,500.0	90.00	179.02	6,361.2	-1,343.86	-6,925.9	-697.3	6,956.4	0.00	0.00	0.00
13,600.0	90.00	179.02	6,361.2	-1,343.86	-7,025.8	-695.6	7,056.1	0.00	0.00	0.00
13,700.0	90.00	179.02	6,361.2	-1,343.86	-7,125.8	-693.9	7,155.7	0.00	0.00	0.00
13,800.0	90.00	179.02	6,361.2	-1,343.87	-7,225.8	-692.2	7,255.4	0.00	0.00	0.00
13,900.0	90.00	179.02	6,361.2	-1,343.87	-7,325.8	-690.5	7,355.1	0.00	0.00	0.00
14,000.0	90.00	179.02	6,361.2	-1,343.87	-7,425.8	-688.8	7,454.7	0.00	0.00	0.00
14,100.0	90.00	179.02	6,361.2	-1,343.88	-7,525.8	-687.1	7,554.4	0.00	0.00	0.00
14,200.0	90.00	179.02	6,361.2	-1,343.88	-7,625.8	-685.4	7,654.1	0.00	0.00	0.00
14,300.0	90.00	179.02	6,361.2	-1,343.89	-7,725.7	-683.7	7,753.7	0.00	0.00	0.00
14,400.0	90.00	179.02	6,361.2	-1,343.89	-7,825.7	-681.9	7,853.4	0.00	0.00	0.00
14,500.0	90.00	179.02	6,361.2	-1,343.90	-7,925.7	-680.2	7,953.1	0.00	0.00	0.00
14,600.0	90.00	179.02	6,361.2	-1,343.90	-8,025.7	-678.5	8,052.7	0.00	0.00	0.00
14,700.0	90.00	179.02	6,361.2	-1,343.90	-8,125.7	-676.8	8,152.4	0.00	0.00	0.00
14,800.0	90.00	179.02	6,361.2	-1,343.91	-8,225.7	-675.1	8,252.1	0.00	0.00	0.00
14,900.0	90.00	179.02	6,361.2	-1,343.91	-8,325.7	-673.4	8,351.8	0.00	0.00	0.00
15,000.0	90.00	179.02	6,361.2	-1,343.92	-8,425.6	-671.7	8,451.4	0.00	0.00	0.00
15,100.0	90.00	179.02	6,361.2	-1,343.93	-8,525.6	-670.0	8,551.1	0.00	0.00	0.00
15,200.0	90.00	179.02	6,361.2	-1,343.93	-8,625.6	-668.3	8,650.8	0.00	0.00	0.00
15,300.0	90.00	179.02	6,361.2	-1,343.94	-8,725.6	-666.6	8,750.4	0.00	0.00	0.00
15,400.0	90.00	179.02	6,361.2	-1,343.94	-8,825.6	-664.8	8,850.1	0.00	0.00	0.00
15,500.0	90.00	179.02	6,361.2	-1,343.95	-8,925.6	-663.1	8,949.8	0.00	0.00	0.00
15,600.0	90.00	179.02	6,361.3	-1,343.96	-9,025.6	-661.4	9,049.4	0.00	0.00	0.00
15,700.0	90.00	179.02	6,361.3	-1,343.96	-9,125.5	-659.7	9,149.1	0.00	0.00	0.00
15,800.0	90.00	179.02	6,361.3	-1,343.97	-9,225.5	-658.0	9,248.8	0.00	0.00	0.00
15,900.0	90.00	179.02	6,361.3	-1,343.97	-9,325.5	-656.3	9,348.4	0.00	0.00	0.00
16,000.0	90.00	179.02	6,361.3	-1,343.98	-9,425.5	-654.6	9,448.1	0.00	0.00	0.00
16,100.0	90.00	179.02	6,361.3	-1,343.99	-9,525.5	-652.9	9,547.8	0.00	0.00	0.00
16,200.0	90.00	179.02	6,361.3	-1,344.00	-9,625.5	-651.2	9,647.4	0.00	0.00	0.00
<b>EPI: 600ft FSL &amp; 2238ft FEL of Sec 34</b>										
16,255.5	90.00	179.02	6,361.3	-1,344.00	-9,681.0	-650.2	9,702.8	0.00	0.00	0.00
16,300.0	90.00	179.00	6,361.3	-1,344.00	-9,725.5	-649.4	9,747.1	0.05	0.00	-0.05
16,400.0	90.00	178.94	6,361.3	-1,344.01	-9,825.4	-647.6	9,846.8	0.05	0.00	-0.05
16,500.0	90.00	178.89	6,361.3	-1,344.00	-9,925.4	-645.8	9,946.4	0.05	0.00	-0.05
<b>BHL: 300ft FSL &amp; 2239ft FEL of Sec 34</b>										
16,555.0	90.00	178.86	6,361.3	-1,344.00	-9,980.4	-644.7	10,001.2	0.05	0.00	-0.05

<b>Database:</b>	EDM 5000.1 Single User Db	<b>Local Co-ordinate Reference:</b>	Well BASHOR 9-60 27B-34-2
<b>Company:</b>	BISON OIL & GAS II, LLC	<b>TVD Reference:</b>	KB-EST @ 5017.3usft (Original Well Elev)
<b>Project:</b>	WELD COUNTY, COLORADO (NAD 83)	<b>MD Reference:</b>	KB-EST @ 5017.3usft (Original Well Elev)
<b>Site:</b>	NW NE SEC. 27 T9N R60 W 6th P.M.	<b>North Reference:</b>	True
<b>Well:</b>	BASHOR 9-60 27B-34-2	<b>Survey Calculation Method:</b>	Minimum Curvature
<b>Wellbore:</b>	ORIGINAL WELLBORE		
<b>Design:</b>	PROPOSAL #1		

Formations					
MD (usft)	TVD (usft)	Name	Lithology	Dip (°)	Dip Direction (°)
634.0	632.3	PIERRE SHALE (BASE OF FOX HI			
3,553.9	3,489.3	PARKMAN			
4,090.6	4,014.3	SUSSEX			
5,202.6	5,112.3	SHANNON			
6,258.9	6,141.3	SHARON SPRINGS SHALE			
6,354.4	6,211.3	NIOBRARA FORMATION			
6,369.4	6,221.3	NIOBRARA A CHALK			
6,592.3	6,331.3	NIOBRARA B CHALK			

Plan Annotations				
MD (usft)	TVD (usft)	Local Coordinates		Comment
		+N/-S (usft)	+E/-W (usft)	
0.0	0.0	0.0	0.0	SHL: 410ft FNL & 1481ft FEL of Sec 27
200.0	200.0	0.0	0.0	START NUDGE (2°/100ft BUR)
800.1	795.7	25.5	-57.2	EOB TO 12° INC
4,528.6	4,442.7	341.9	-765.0	END OF TANGENT
5,128.7	5,038.4	367.4	-822.2	EOD TO VERTICAL
5,878.7	5,788.4	367.4	-822.2	KOP (10°/100ft BUR)
6,778.6	6,361.3	-205.5	-812.4	BPI: 600ft FNL & 2294ft FEL of Sec 27
16,255.5	6,361.3	-9,681.0	-650.2	EPI: 600ft FSL & 2238ft FEL of Sec 34
16,555.0	6,361.3	-9,980.4	-644.7	BHL: 300ft FSL & 2239ft FEL of Sec 34