

LEGEND:

 **PROPOSED LOCATION**



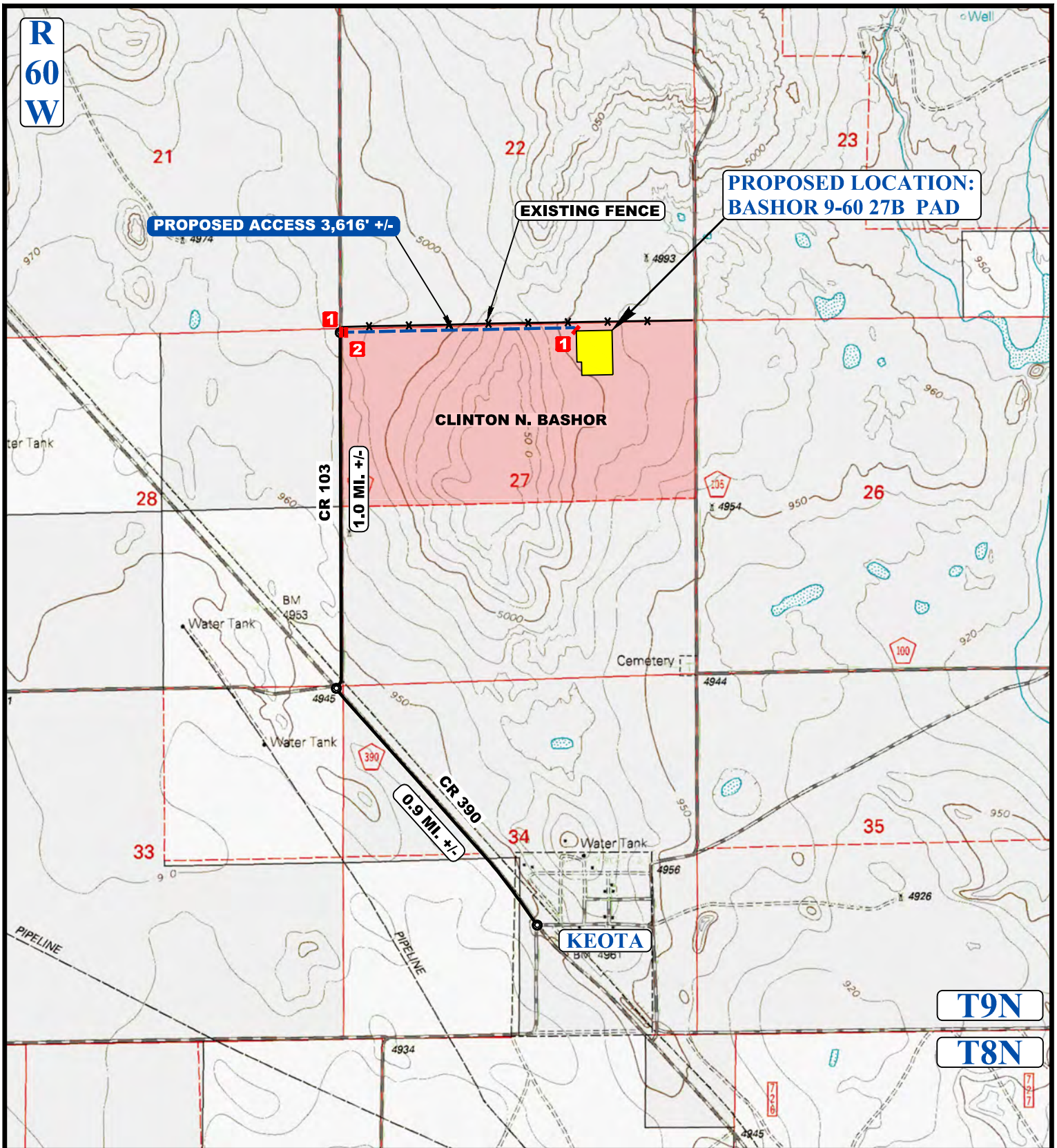
BISON OIL & GAS II

BASHOR 9-60 27B PAD
 N 1/2 NE 1/4, SECTION 27, T9N, R60W, 6th P.M.
 WELD COUNTY, COLORADO



UELS, LLC
 Corporate Office * 85 South 200 East
 Vernal, UT 84078 * (435) 789-1017

SURVEYED BY	ROBET FISHER	06-23-17	SCALE
DRAWN BY	Z.T.	07-03-17	1 : 100,000
ACCESS ROAD MAP			TOPO A



NOTE: PARCEL DATA SHOWN HAS BEEN OBTAINED FROM VARIOUS SOURCES AND SHOULD BE USED FOR MAPPING, GRAPHIC AND PLANNING PURPOSES ONLY. NO WARRANTY IS MADE BY UINTAH ENGINEERING AND LAND SURVEYING (UELS) FOR ACCURACY OF THE PARCEL DATA.

LEGEND:

- EXISTING ROAD
- PROPOSED ROAD
- EXISTING FENCE
- 1 INSTALL 18" CULVERT
- 2 INSTALL CATTLE GUARD



BISON OIL & GAS II

BASHOR 9-60 27B PAD
 N 1/2 NE 1/4, SECTION 27, T9N, R60W, 6th P.M.
 WELD COUNTY, COLORADO



UELS, LLC
 Corporate Office * 85 South 200 East
 Vernal, UT 84078 * (435) 789-1017

SURVEYED BY	ROBET FISHER	06-23-17	SCALE
DRAWN BY	Z.T.	07-03-17	1 : 24,000
ACCESS ROAD MAP			TOPO B