

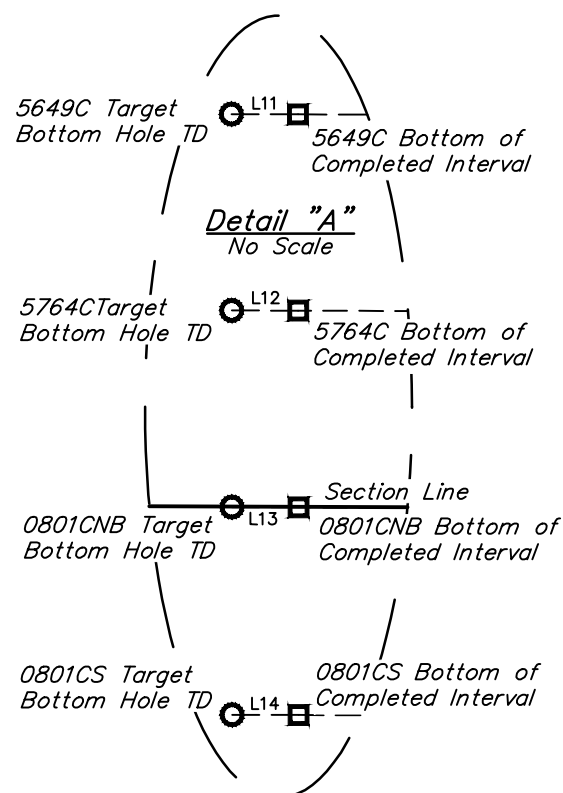
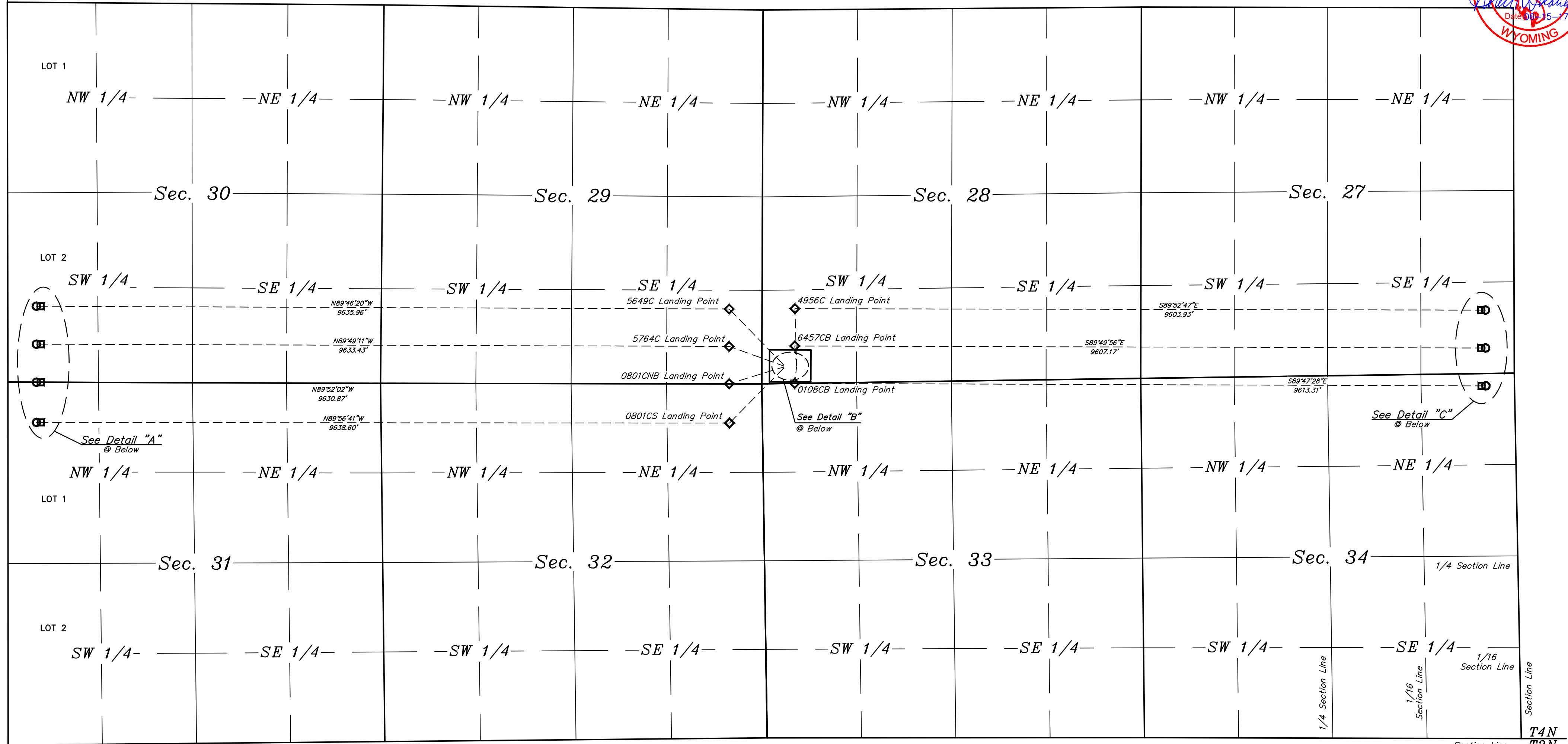


R
63
W

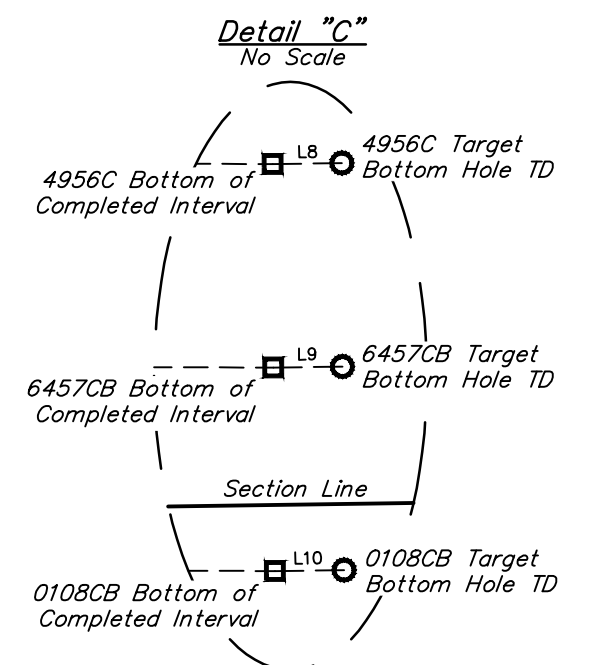
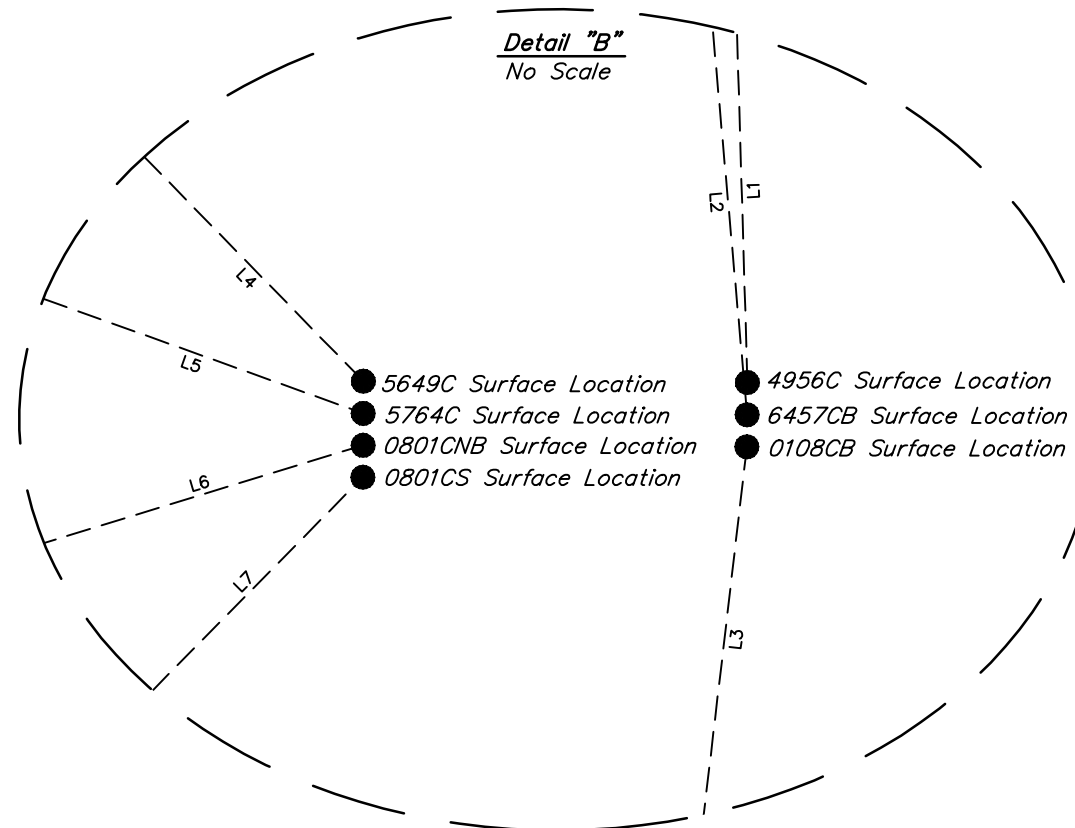
R
62
W

LEGEND:

- = PROPOSED WELLHEAD.
- ◊ = LANDING POINT.
- = BOTTOM OF COMPLETED INTERVAL.
- = TARGET BOTTOM HOLE TD.



| LINE TABLE | | |
|------------|-------------|----------|
| LINE | DIRECTION | LENGTH |
| L1 | N01°42'06"W | 787.21' |
| L2 | N05°06'17"W | 281.01' |
| L3 | S06°41'31"W | 229.74' |
| L4 | N44°18'35"W | 1092.82' |
| L5 | N70°17'36"W | 812.70' |
| L6 | S72°57'51"W | 802.05' |
| L7 | S44°36'23"W | 1080.18' |
| L8 | S89°11'58"W | 60.00' |
| L9 | S89°11'58"W | 60.00' |
| L10 | S89°11'58"W | 60.00' |
| L11 | N89°47'20"W | 60.00' |
| L12 | N89°47'20"W | 60.00' |
| L13 | N89°47'20"W | 60.00' |
| L14 | N89°47'20"W | 60.00' |



NOTES:

REV: 3 06-14-17 D.COX (LP & BHL CHANGE)

BILL BARRETT CORPORATION

ANSCHUTZ EQUUS FARMS 4-62-28 27 SWSW PAD
SW 1/4 SW 1/4, SECTION 28, T4N, R62W, 6th P.M.
WELD COUNTY, COLORADO

| | | | |
|-----------------|-------------------|-----------|------------|
| SURVEYED BY | CHAD MEIERS, N.P. | 12-22-16 | SCALE |
| DRAWN BY | S.E. | 01-16-17 | 1" = 1000' |
| MULTI-Well PLAN | | FIGURE #5 | |



UELS, LLC
Corporate Office * 85 South 200 East
Vernal, UT 84078 * (435) 789-1017