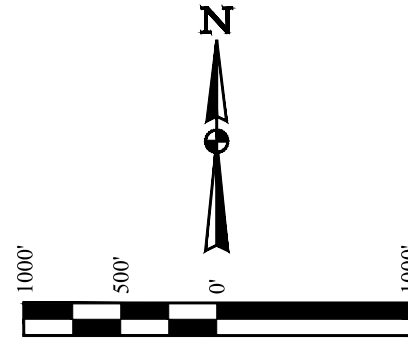


LEGEND:

- = 90° SYMBOL  
● = PROPOSED WELLHEAD.  
◆ = ENTRY POINT.  
○ = BTM PERF.  
○ = TARGET BOTTOM HOLE.  
▲ = SECTION CORNERS LOCATED. (NAD 83)  
△ = SECTION CORNERS RE-ESTABLISHED.  
(Not Set on Ground.) (NAD 83)

T1N, R67W, 6th P.M.

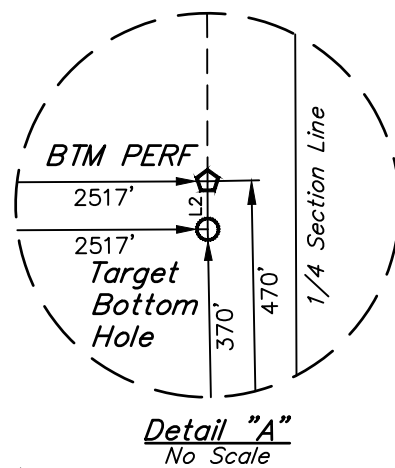
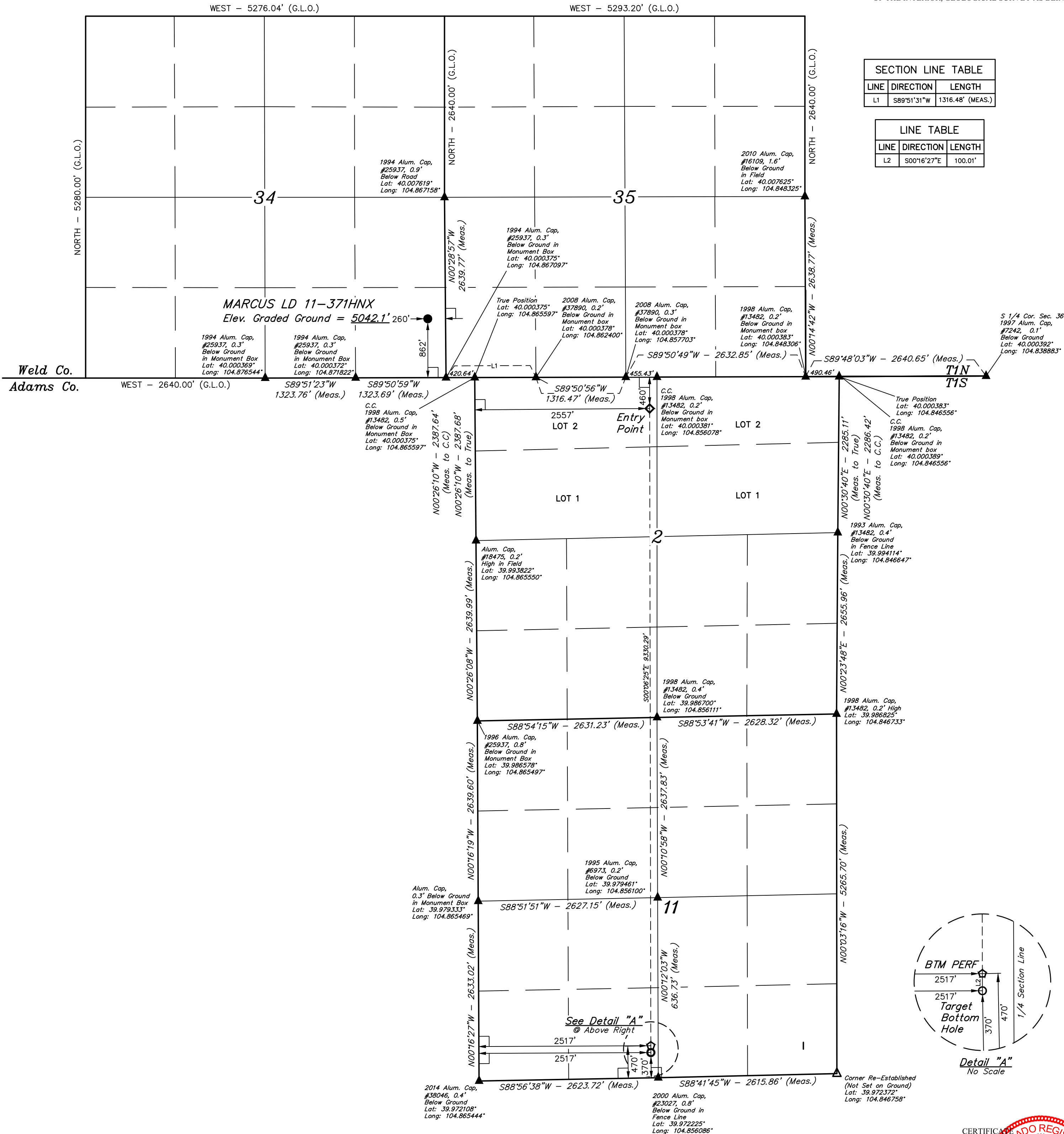


BASIS OF BEARINGS  
BASIS OF BEARINGS IS A G.P.S. OBSERVATION

BASIS OF ELEVATION  
BENCHMARK JR 53 5026 LOCATED IN THE SW 1/4 SE 1/4  
OF SECTION 18, T1N, R68W, 6th P.M., TAKEN FROM 1988  
PUBLISHED DATUM BY THE UNITED STATES DEPARTMENT  
OF THE INTERIOR, GEOLOGICAL SURVEY AS BEING 5028 FEET.

SECTION LINE TABLE		
LINE	DIRECTION	LENGTH
L1	S89°51'31"W	1316.48' (MEAS.)

LINE TABLE		
LINE	DIRECTION	LENGTH
L2	S00°16'27"E	100.01'



CERTIFICATE OF REGISTRATION  
THIS IS TO CERTIFY THAT THE ABOVE SIGNED SURVEYOR HAS REVIEWED THE  
NOTES OF ACTUAL SURVEYS MADE BY ME UNDER MY SUPERVISION  
AND THAT THE SAME ARE TRUE AND CORRECT TO THE BEST OF MY  
KNOWLEDGE AND BELIEF.

REGISTERED LAND SURVEYOR  
REGISTRATION NO. 28285  
STATE OF COLORADO  
JULY 17, 2017

REV: 1 07-07-17 D.COX (TBH MOVE & BTM PERF ADD)

GREAT WESTERN OPERATING COMPANY

MARCUS LD 11-371HNX  
SE 1/4 SE 1/4, SECTION 34, T1N, R67W, 6th P.M.  
WELD COUNTY, COLORADO

PDOP = 1.2

NAD 83 (SURFACE LOCATION)	NAD 83 (ENTRY POINT)	NAD 83 (BTM PERF)	NAD 83 (TARGET BOTTOM HOLE)
LATITUDE = 40°00'09.87" (40.002742)	LATITUDE = 39°59'56.82" (39.999117)	LATITUDE = 39°58'24.64" (39.973511)	LATITUDE = 39°58'23.65" (39.973236)
LONGITUDE = 104°52'04.96" (104.868044)	LONGITUDE = 104°51'23.27" (104.856464)	LONGITUDE = 104°51'23.30" (104.856472)	LONGITUDE = 104°51'23.29" (104.856469)
NAD 27 (SURFACE LOCATION)	NAD 27 (ENTRY POINT)	NAD 27 (BTM PERF)	NAD 27 (TARGET BOTTOM HOLE)
LATITUDE = 40°00'09.93" (40.002758)	LATITUDE = 39°59'56.88" (39.999133)	LATITUDE = 39°58'24.70" (39.973528)	LATITUDE = 39°58'23.71" (39.973253)
LONGITUDE = 104°52'03.06" (104.867517)	LONGITUDE = 104°51'21.36" (104.855933)	LONGITUDE = 104°51'21.39" (104.855942)	LONGITUDE = 104°51'21.38" (104.855939)



UELS, LLC  
Corporate Office \* 85 South 200 East  
Vernal, UT 84078 \* (435) 789-1017

SURVEYED BY CHAD MEIERS, D.N. 03-06-17 SCALE  
DRAWN BY K.B. 03-10-17 1" = 1000'

WELL LOCATION PLAT