



July 14, 2017

Colorado Oil and Gas Conservation Commission  
1120 Lincoln Street, Suite 801  
Denver, CO 80203

**RE: Proposed Wellbore Spacing Unit**  
Marcus LD 11-371HNX  
Niobrara New Drill  
SESE Sec. 34, Township 1N, Range 67W  
Weld County, Colorado

Dear Director Lepore,

Great Western Operating Company, LLC (Great Western) is planning to drill the above captioned well in accordance with the provisions of Colorado Oil and Gas Conservation Commission (COGCC) Rule 318A.e.

Great Western's proposed wellbore spacing unit consists of:

Township 1S, Range 67W (Adams County):  
Section 2: N/2, E/2SW/4, W/2SE/4  
Section 11: E/2W/2, W/2E/2

Total Acres: 765 acres

The 30 day notification time period has passed and we have not yet received any objections to such well locations or proposed spacing unit, therefore Great Western hereby requests the Director to approve the above mentioned well. Great Western respectfully requests the COGCC review the enclosed map illustrating the proposed wellbore spacing unit.

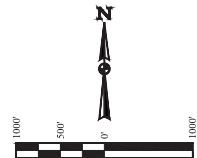
Respectfully,

*Ashley Noonan*

**Ashley Noonan**  
Senior Regulatory Analyst  
Great Western Operating Company, LLC

- LEGEND:**
- 90° SYMBOL
  - PROPOSED WELLHEAD
  - ENTRY POINT
  - BTM PERF.
  - TARGET BOTTOM HOLE
  - SECTION CORNERS LOCATED. (NAD 83)
  - SECTION CORNERS RE-ESTABLISHED. (Not Set on Grounds) (NAD 83)

T1N, R67W, 6th P.M.

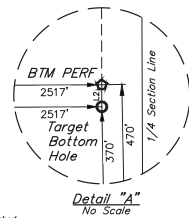
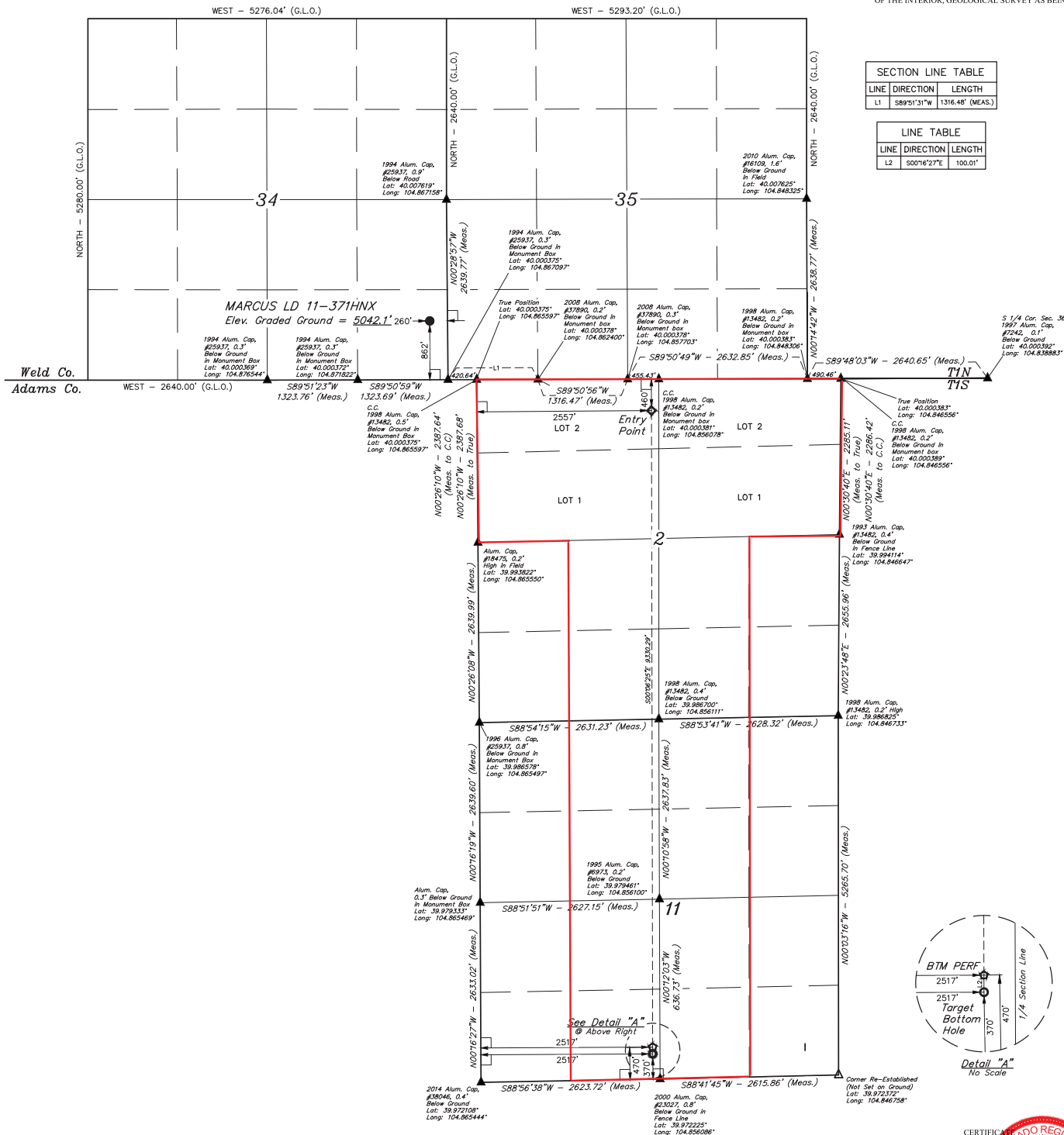


**BASIS OF BEARINGS**  
BASIS OF ELEVATION

BENCHMARK JR 53 5026 LOCATED IN THE SW 1/4 SE 1/4 OF SECTION 18, T1N, R68W, 6th P.M., TAKEN FROM 1988 PUBLISHED DATUM BY THE UNITED STATES DEPARTMENT OF THE INTERIOR, GEOLOGICAL SURVEY AS BEING 5028 FEET.

SECTION LINE TABLE		
LINE	DIRECTION	LENGTH
L1	S89°51'31"W	1316.48' (MEAS.)

LINE TABLE		
LINE	DIRECTION	LENGTH
L2	S00°16'27"E	100.01'



THIS IS TO CERTIFY THAT THE ABOVE INFORMATION IS A TRUE AND CORRECT COPY OF THE ORIGINAL SURVEY RECORDS AND THAT THE SAME ARE TRUE AND CORRECT TO THE BEST OF MY KNOWLEDGE AND BELIEF.

**RECEIVED**  
RECORDS SECTION  
JUL 10 2017  
STATE OF COLORADO  
STATIONER GENERAL LAND SURVEYOR

REV: 1 07-07-17 D.COX (TBM MOVE & BTM PERF ADD)

**GREAT WESTERN OPERATING COMPANY**

MARCUS LD 11-371HNX  
SE 1/4 SE 1/4, SECTION 34, T1N, R67W, 6th P.M.  
WELD COUNTY, COLORADO

PDOP = 1.2

NAD 83 (SURFACE LOCATION)	NAD 83 (ENTRY POINT)	NAD 83 (BTM PERF.)	NAD 83 (TARGET BOTTOM HOLE)
Latitude = 40°00'09.82" (40.002742)	Latitude = 39°59'56.82" (39.999117)	Latitude = 39°58'24.64" (39.973511)	Latitude = 39°58'23.65" (39.973236)
Longitude = 104°27'04.36" (104.451211)	Longitude = 104°51'23.27" (104.854646)	Longitude = 104°51'23.30" (104.854672)	Longitude = 104°51'23.29" (104.854669)
NAD 27 (SURFACE LOCATION)	NAD 27 (ENTRY POINT)	NAD 27 (BTM PERF.)	NAD 27 (TARGET BOTTOM HOLE)
Latitude = 40°00'09.93" (40.002738)	Latitude = 39°59'56.88" (39.999133)	Latitude = 39°58'24.70" (39.973528)	Latitude = 39°58'23.71" (39.973253)
Longitude = 104°27'03.96" (104.451171)	Longitude = 104°51'21.36" (104.853933)	Longitude = 104°51'21.39" (104.853962)	Longitude = 104°51'21.38" (104.853959)



**UELS, LLC**  
Corporate Office • 85 South 200 East  
Vernal, UT 84078 • (435) 789-1017

SURVEYED BY CHAD MEIERS, D.N. 03-06-17  
DRAWN BY K.B. 03-10-17  
**WELL LOCATION PLAT**