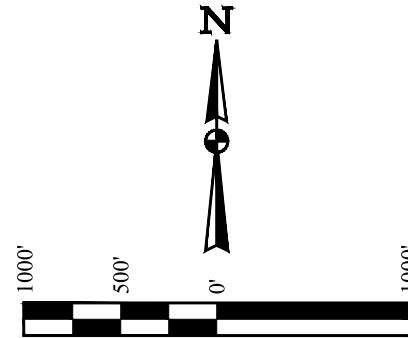


LEGEND:

- = 90° SYMBOL
● = PROPOSED WELLHEAD.
◆ = ENTRY POINT.
○ = BTM PERF.
○ = TARGET BOTTOM HOLE.
▲ = SECTION CORNERS LOCATED. (NAD 83)
△ = SECTION CORNERS RE-ESTABLISHED.
(Not Set on Ground.) (NAD 83)

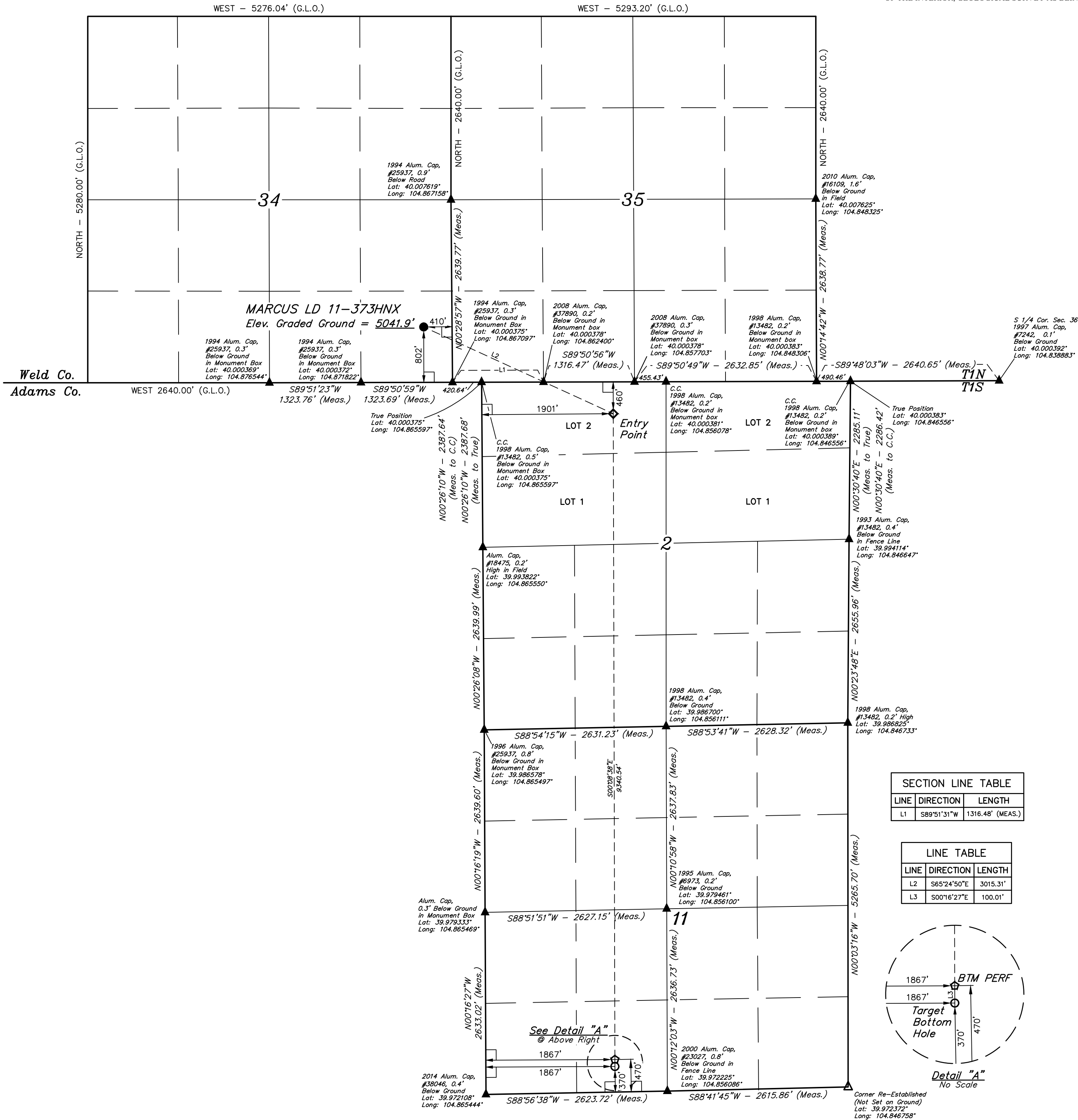
T1N, R67W, 6th P.M.



BASIS OF BEARINGS
BASIS OF BEARINGS IS A G.P.S. OBSERVATION

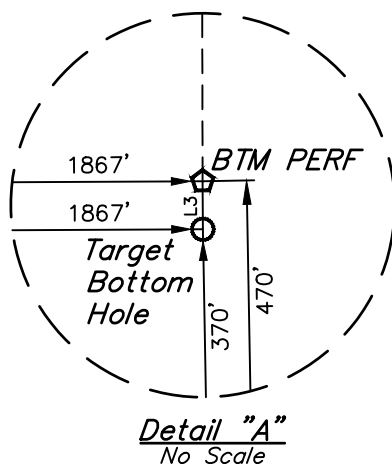
BASIS OF ELEVATION

BENCHMARK JR 53 5026 LOCATED IN THE SW 1/4 SE 1/4
OF SECTION 18, T1N, R68W, 6th P.M., TAKEN FROM 1988
PUBLISHED DATUM BY THE UNITED STATES DEPARTMENT
OF THE INTERIOR, GEOLOGICAL SURVEY AS BEING 5028 FEET.



SECTION LINE TABLE		
LINE	DIRECTION	LENGTH
L1	S89°51'31\"W	1316.48' (MEAS.)

LINE TABLE		
LINE	DIRECTION	LENGTH
L2	S65°24'50\"E	3015.31'
L3	S00°16'27\"E	100.01'



CERTIFICATE OF REGISTRATION
THIS IS TO CERTIFY THAT THE ABOVE SURVEY WAS MADE BY ME AND UNDER MY SUPERVISION
AND THAT THE SAME ARE TRUE AND CORRECT TO THE BEST OF MY
KNOWLEDGE AND BELIEF.

REGISTERED LAND SURVEYOR
REGISTRATION NO. 28285
STATE OF COLORADO
JANUARY 17, 2017

REV: 1 07-07-17 D.COX (TBH MOVE & BTM PERF ADD)

GREAT WESTERN OPERATING COMPANY

MARCUS LD 11-373HNX
SE 1/4 SE 1/4, SECTION 34, T1N, R67W, 6th P.M.
WELD COUNTY, COLORADO

PDOP = 1.5

NAD 83 (SURFACE LOCATION)	NAD 83 (ENTRY POINT)	NAD 83 (BTM PERF)	NAD 83 (TARGET BOTTOM HOLE)
LATITUDE = 40°00'09.27\" (40.002575)	LATITUDE = 39°59'56.82\" (39.999117)	LATITUDE = 39°58'24.53\" (39.973481)	LATITUDE = 39°58'23.55\" (39.973208)
LONGITUDE = 104°52'06.89\" (104.868581)	LONGITUDE = 104°51'31.69\" (104.858803)	LONGITUDE = 104°51'31.64\" (104.858789)	LONGITUDE = 104°51'31.64\" (104.858789)
NAD 27 (SURFACE LOCATION)	NAD 27 (ENTRY POINT)	NAD 27 (BTM PERF)	NAD 27 (TARGET BOTTOM HOLE)
LATITUDE = 40°00'09.33\" (40.002592)	LATITUDE = 39°59'56.88\" (39.999133)	LATITUDE = 39°58'24.59\" (39.973497)	LATITUDE = 39°58'23.60\" (39.973222)
LONGITUDE = 104°52'04.98\" (104.868050)	LONGITUDE = 104°51'29.79\" (104.858275)	LONGITUDE = 104°51'29.73\" (104.858258)	LONGITUDE = 104°51'29.73\" (104.858258)

UINTEAH
ENGINEERING & LAND SURVEYING

UELS, LLC
Corporate Office * 85 South 200 East
Vernal, UT 84078 * (435) 789-1017

SURVEYED BY CHAD MEIERS, D.N. 03-06-17 SCALE
DRAWN BY K.B. 03-10-17 1\" = 1000'

WELL LOCATION PLAT