

CASTOR 8-59 19-24-16 WELL LOCATION CERTIFICATE

NW COR. SEC. 19
2 1/2" ALUM. CAP
RLS 26294, 2008

S89°01'06"E 2702.32'

S89°01'06"E 2629.78'

NE COR. SEC. 19
2 1/2" ALUM. CAP
RLS 26964, 2007

BASIS OF BEARINGS
(SEE NOTE 2)
N01°09'43"E 2652.14'

NOTES:
BH LOCATION PROVIDED BY CLIENT.
LAND SURFACE USE-RANGELAND
SEE LOCATION DRAWING FOR ADDITIONAL
IMPROVEMENTS WITHIN 500'

PDOP=1.7
GPS OPERATOR: MICHAEL HERNANDEZ

N 1/4 COR. SEC. 19
2 1/2" ALUM. CAP
PLS 28285, 2012

SURFACE LOCATION:
GROUND ELEVATION=4861'
NAD83
LATITUDE 40.644408° N
LONGITUDE 104.011993° W

LANDING POINT LOCATION:
NAD83
LATITUDE 40.642261° N
LONGITUDE 104.012716° W

BOTTOM HOLE LOCATION:
NAD83
LATITUDE 40.642470° N
LONGITUDE 104.038357° W

19

W 1/4 COR. SEC. 19
2 1/2" ALUM. CAP
CO 17492, 2011

E 1/4 COR. SEC. 19
2 1/2" ALUM. CAP
RLS 26294, 2007

N01°09'44"E 2652.12'

LOT 3

CASTOR 8-59 19-24-16

BHL: 627' FSL
2340' FEL

SEC 24

LOT 4

S14°20'12"W
807.85'

N89°25'39"W 7117.94'

LP: 635' FSL
600' FEL

S00°44'01"W 2666.35'

SW COR. SEC. 19
2 1/2" ALUM. CAP
R.M. 100' NW, NE
CO 17492, 2011

N88°53'26"W 2744.62'

S 1/4 COR. SEC. 19
2 1/2" ALUM. CAP
PLS 28285, 2012

N88°53'27"W 2637.70'

SE COR. SEC. 19
3 1/4" ALUM. CAP
PLS 10740, 1990

LEGEND

- ⊕ = EXISTING MONUMENT
- = CALCULATED POSITION
- = PROPOSED WELL
- ⬮ = BOTTOM HOLE
- ▲ = LANDING POINT
- LP = LANDING POINT
- BHL = BOTTOM HOLE LOCATION

WELL CASTOR 8-59 19-24-16 TO BE
LOCATED 1421' FSL & 410' FEL

NOTES:

- THIS FIELD SURVEY CONFORMS TO THE MINIMUM STANDARDS SET BY THE C.O.G.C.C., RULE NO. 215
- BEARINGS ARE BASED ON THE ASSUMPTION THAT THE WEST LINE OF THE NORTHWEST QUARTER OF SECTION 19 BEARS N01°09'43"E BETWEEN THE MONUMENTS SHOWN HEREON.
- ALL DISTANCES AND BEARINGS SHOWN HEREON ARE GROUND VALUES AS GPS MEASURED IN THE FIELD, WITH TIES TO WELLS MEASURED PERPENDICULAR TO SECTION LINES. THIS LOW DISTORTION PROJECTION (LDP) IS BASED ON THE NORTH AMERICAN DATUM OF 1983, U.S. SURVEY FOOT WITH A LATITUDE ORIGIN OF 40.655085°N, A CENTRAL MERIDIAN LONGITUDE OF 104.086861°W, AND A SCALE FACTOR ON THE CENTRAL MERIDIAN OF 1.000232 (EXACT). THE LDP BASIS OF BEARINGS IS GEODETIC NORTH.
- FIELD VERIFICATION OF MONUMENTS COMPLETED WITHIN 1 YEAR OF SIGNATURE DATE.

NOTICE: ACCORDING TO COLORADO LAW YOU MUST COMMENCE ANY LEGAL ACTION BASED UPON ANY DEFECT IN THIS SURVEY WITHIN THREE YEARS AFTER YOU FIRST DISCOVER SUCH DEFECT. IN NO EVENT MAY ANY ACTION BASED UPON ANY DEFECT IN THIS SURVEY BE COMMENCED MORE THAN TEN YEARS FROM THIS SAID DATE OF THIS CERTIFICATION SHOWN HEREON.

I, MICHAEL L. POOL, A LICENSED PROFESSIONAL LAND SURVEYOR IN THE STATE OF COLORADO DO HEREBY CERTIFY TO **BISON OIL & GAS 2, LLC**, THAT THE SURVEY AND WELL LOCATION CERTIFICATE SHOWN HEREON WERE DONE BY ME OR UNDER MY DIRECT SUPERVISION AND THAT THE DRAWING SHOWN HEREON ACCURATELY DEPICTS THE PROPOSED LOCATION OF THE WELL. THIS CERTIFICATE DOES NOT REPRESENT A LAND SURVEY PLAT OR IMPROVEMENT SURVEY PLAT AS DEFINED BY C.R.S. 38-51-102 AND CANNOT BE RELIED UPON TO DETERMINE OWNERSHIP.

MICHAEL L. POOL, PLS 38304
COLORADO LICENSED PROFESSIONAL LAND SURVEYOR
FOR AND ON BEHALF OF P.F.S., LLC

0 500 1000
SCALE: 1" = 1000'



SHEET 1 OF 2



FIELD DATE
06-28-17

DRAWING DATE
07-06-17

BY: MAG
CHECKED: CLP

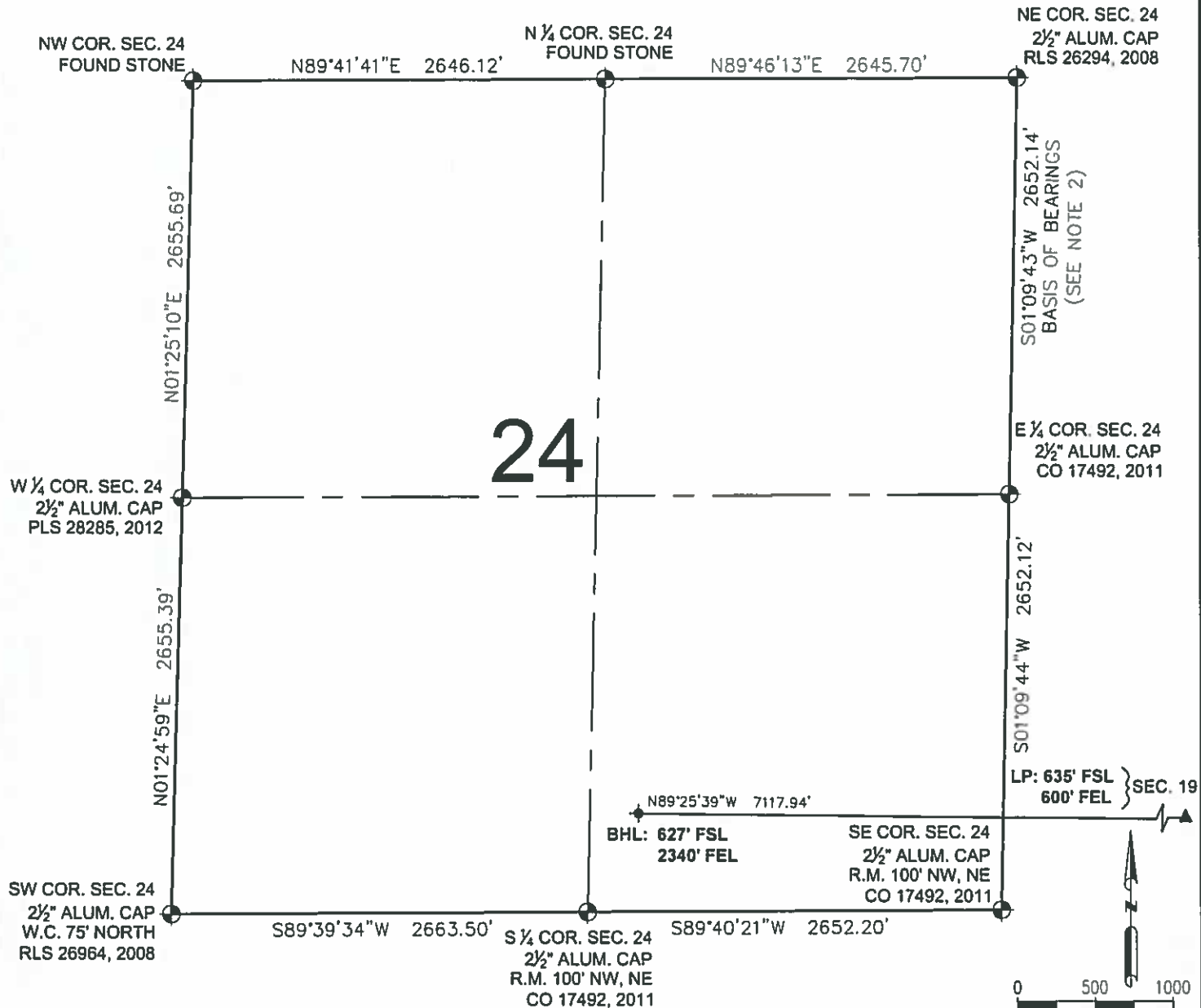
WELL NAME:
CASTOR 8-59 19-24-16

SURFACE LOCATION:
NE 1/4 SE 1/4 SEC. 19, T8N, R59W, 6TH P.M.
WELD COUNTY, COLORADO

PREPARED FOR



CASTOR 8-59 19-24-16 WELL LOCATION CERTIFICATE



LEGEND

- ⊕ = EXISTING MONUMENT
- ⬤ = CALCULATED POSITION
- ⬤ = PROPOSED WELL
- ⬤ = BOTTOM HOLE
- ▲ = LANDING POINT
- LP = LANDING POINT

BHL = BOTTOM HOLE LOCATION

MICHAEL L. POOL, PLS 38304
COLORADO LICENSED PROFESSIONAL LAND SURVEYOR
FOR AND ON BEHALF OF P.F.S., LLC



SHEET 2 OF 2



FIELD DATE
06-28-17

DRAWING DATE
07-06-17

BY
MAG

CHECKED
CLP

WELL NAME
CASTOR 8-59 19-24-16

SURFACE LOCATION:

NE 1/4 SE 1/4 SEC. 19, T8N, R59W, 6TH P.M.
WELD COUNTY, COLORADO

PREPARED FOR:

