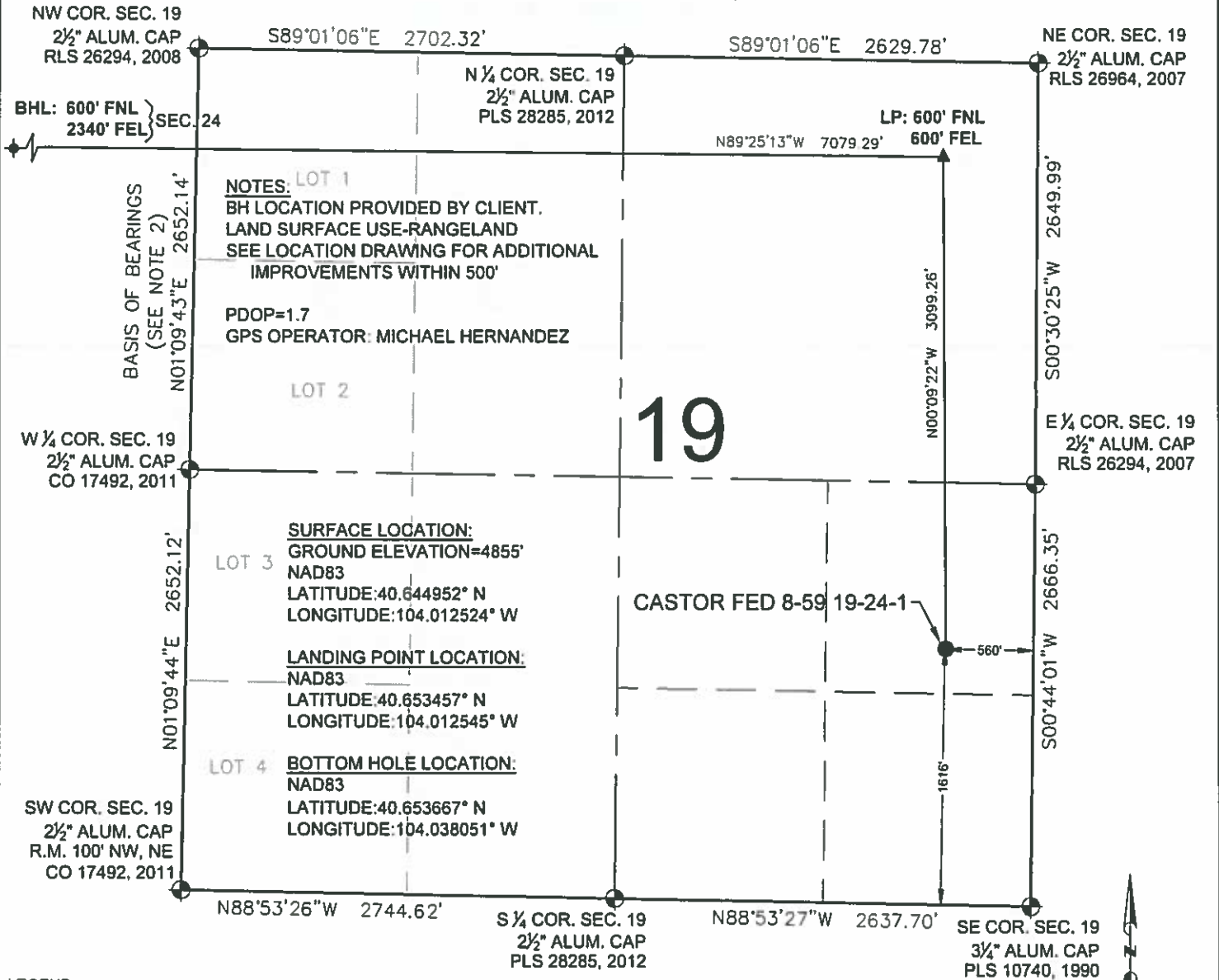
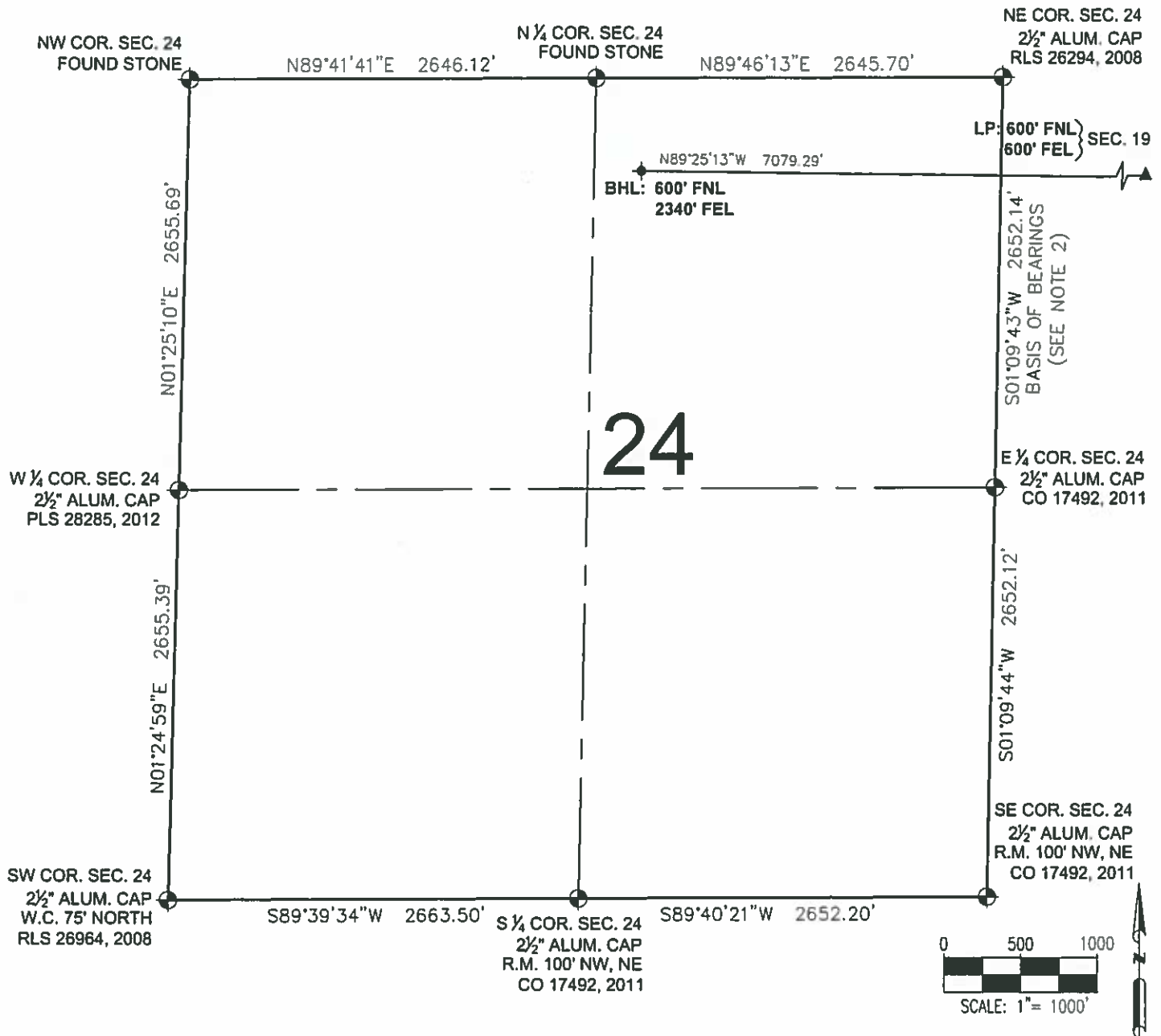


CASTOR FED 8-59 19-24-1 WELL LOCATION CERTIFICATE



CASTOR FED 8-59 19-24-1 WELL LOCATION CERTIFICATE



LEGEND

- = EXISTING MONUMENT
- = CALCULATED POSITION
- = PROPOSED WELL
- ✦ = BOTTOM HOLE
- ▲ = LANDING POINT
- LP = LANDING POINT
- BHL = BOTTOM HOLE LOCATION

MICHAEL L. POOL, PLS 38304
COLORADO LICENSED PROFESSIONAL LAND SURVEYOR
FOR AND ON BEHALF OF P.F.S., LLC



SHEET 2 OF 2



FIELD DATE
06-28-17
DRAWING DATE
06-30-17
BY
MAG
CHECKED
DJP

WELL NAME
CASTOR FED 8-59 19-24-1
SURFACE LOCATION
NE 1/4 SE 1/4 SEC. 19, T8N, R59W, 6TH P.M.
WELD COUNTY, COLORADO

