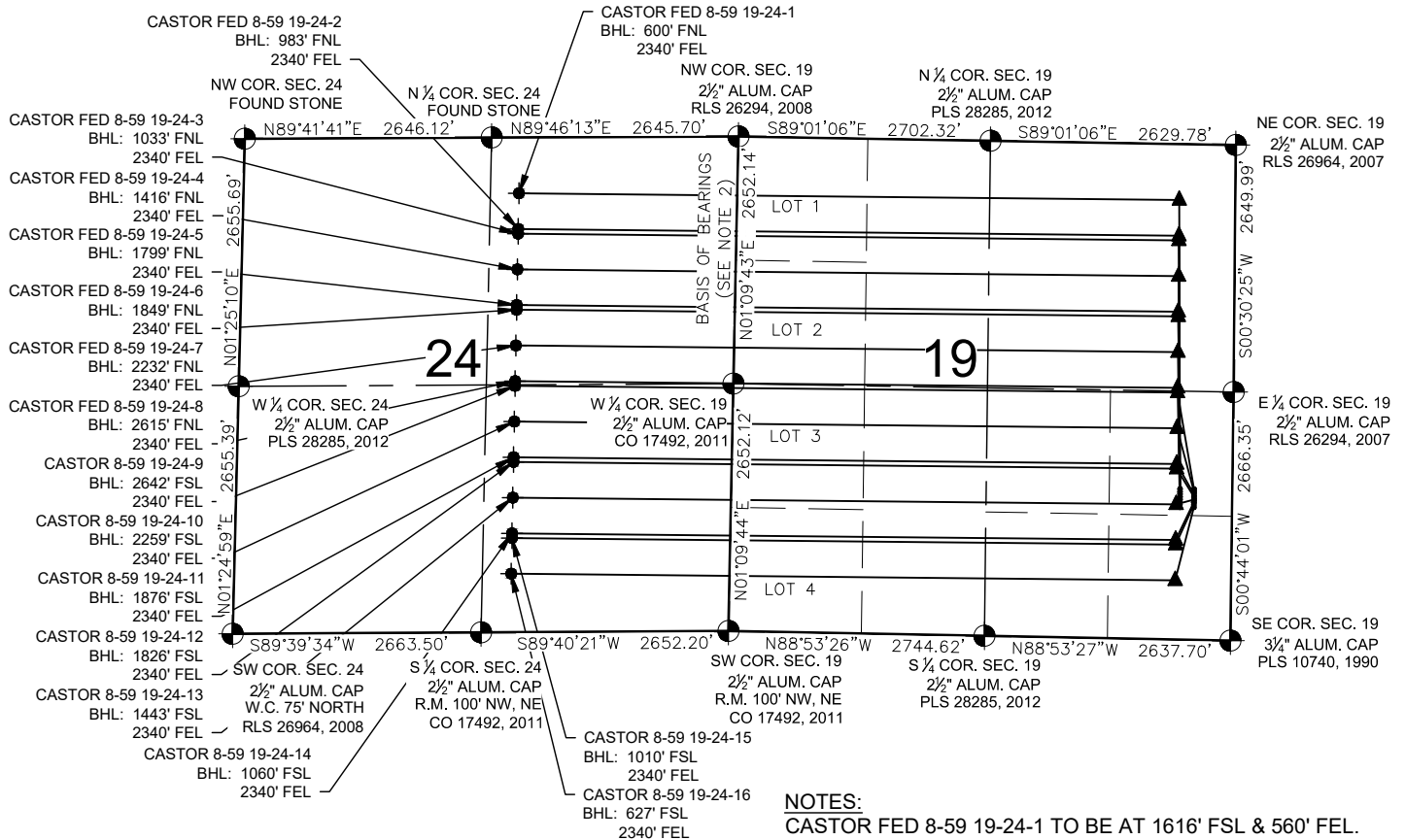


CASTOR 8-59 19 PAD MULTI-WELL PLAN



NOTES:

- CASTOR FED 8-59 19-24-1 TO BE AT 1616' FSL & 560' FEL.
BOTTOM HOLE AT 600' FNL & 2340' FEL, SEC. 24.
- CASTOR FED 8-59 19-24-2 TO BE AT 1588' FSL & 560' FEL.
BOTTOM HOLE AT 983' FNL & 2340' FEL, SEC. 24.
- CASTOR FED 8-59 19-24-3 TO BE AT 1560' FSL & 560' FEL.
BOTTOM HOLE AT 1033' FNL & 2340' FEL, SEC. 24.
- CASTOR FED 8-59 19-24-4 TO BE AT 1532' FSL & 560' FEL.
BOTTOM HOLE AT 1416' FNL & 2340' FEL, SEC. 24.
- CASTOR FED 8-59 19-24-5 TO BE AT 1504' FSL & 560' FEL.
BOTTOM HOLE AT 1799' FNL & 2340' FEL, SEC. 24.
- CASTOR FED 8-59 19-24-6 TO BE AT 1476' FSL & 560' FEL.
BOTTOM HOLE AT 1849' FNL & 2340' FEL, SEC. 24.
- CASTOR FED 8-59 19-24-7 TO BE AT 1448' FSL & 560' FEL.
BOTTOM HOLE AT 2232' FNL & 2340' FEL, SEC. 24.
- CASTOR FED 8-59 19-24-8 TO BE AT 1420' FSL & 560' FEL.
BOTTOM HOLE AT 2615' FNL & 2340' FEL, SEC. 24.
- CASTOR 8-59 19-24-9 TO BE AT 1617' FSL & 410' FEL.
BOTTOM HOLE AT 2642' FSL & 2340' FEL, SEC. 24.
- CASTOR 8-59 19-24-10 TO BE AT 1589' FSL & 410' FEL.
BOTTOM HOLE AT 2259' FSL & 2340' FEL, SEC. 24.
- CASTOR 8-59 19-24-11 TO BE AT 1561' FSL & 410' FEL.
BOTTOM HOLE AT 1876' FSL & 2340' FEL, SEC. 24.
- CASTOR 8-59 19-24-12 TO BE AT 1533' FSL & 410' FEL.
BOTTOM HOLE AT 1826' FSL & 2340' FEL, SEC. 24.
- CASTOR 8-59 19-24-13 TO BE AT 1505' FSL & 410' FEL.
BOTTOM HOLE AT 1443' FSL & 2340' FEL, SEC. 24.
- CASTOR 8-59 19-24-14 TO BE AT 1477' FSL & 410' FEL.
BOTTOM HOLE AT 1060' FSL & 2340' FEL, SEC. 24.
- CASTOR 8-59 19-24-15 TO BE AT 1449' FSL & 410' FEL.
BOTTOM HOLE AT 1010' FSL & 2340' FEL, SEC. 24.
- CASTOR 8-59 19-24-16 TO BE AT 1421' FSL & 410' FEL.
BOTTOM HOLE AT 627' FSL & 2340' FEL, SEC. 24.

LEGEND

- = EXISTING MONUMENT
- = BOTTOM HOLE
- = CALCULATED POSITION
- ▲ = LANDING POINT
- = PROPOSED WELL
- BHL = BOTTOM HOLE LOCATION

NOTES:

- THIS FIELD SURVEY CONFORMS TO THE MINIMUM STANDARDS SET BY THE C.O.G.C.C., RULE NO. 215
- BEARINGS ARE BASED ON THE ASSUMPTION THAT THE WEST LINE OF THE NORTHWEST QUARTER OF SECTION 19, BEARS N01°09'43"E BETWEEN THE MONUMENTS SHOWN HEREON.
- ALL DISTANCES AND BEARINGS SHOWN HEREON ARE GROUND VALUES AS GPS MEASURED IN THE FIELD, WITH TIES TO WELLS MEASURED PERPENDICULAR TO SECTION LINES. THIS LOW DISTORTION PROJECTION (LDP) IS BASED ON THE NORTH AMERICAN DATUM OF 1983, U.S. SURVEY FOOT WITH A LATITUDE ORIGIN OF 40.65508503°N, A CENTRAL MERIDIAN LONGITUDE OF 104.0868614°W, AND A SCALE FACTOR ON THE CENTRAL MERIDIAN OF 1.000232 (EXACT). THE LDP BASIS OF BEARINGS IS GEODETIC NORTH.
- FIELD VERIFICATION OF MONUMENTS COMPLETED WITHIN 1 YEAR OF SIGNATURE DATE.