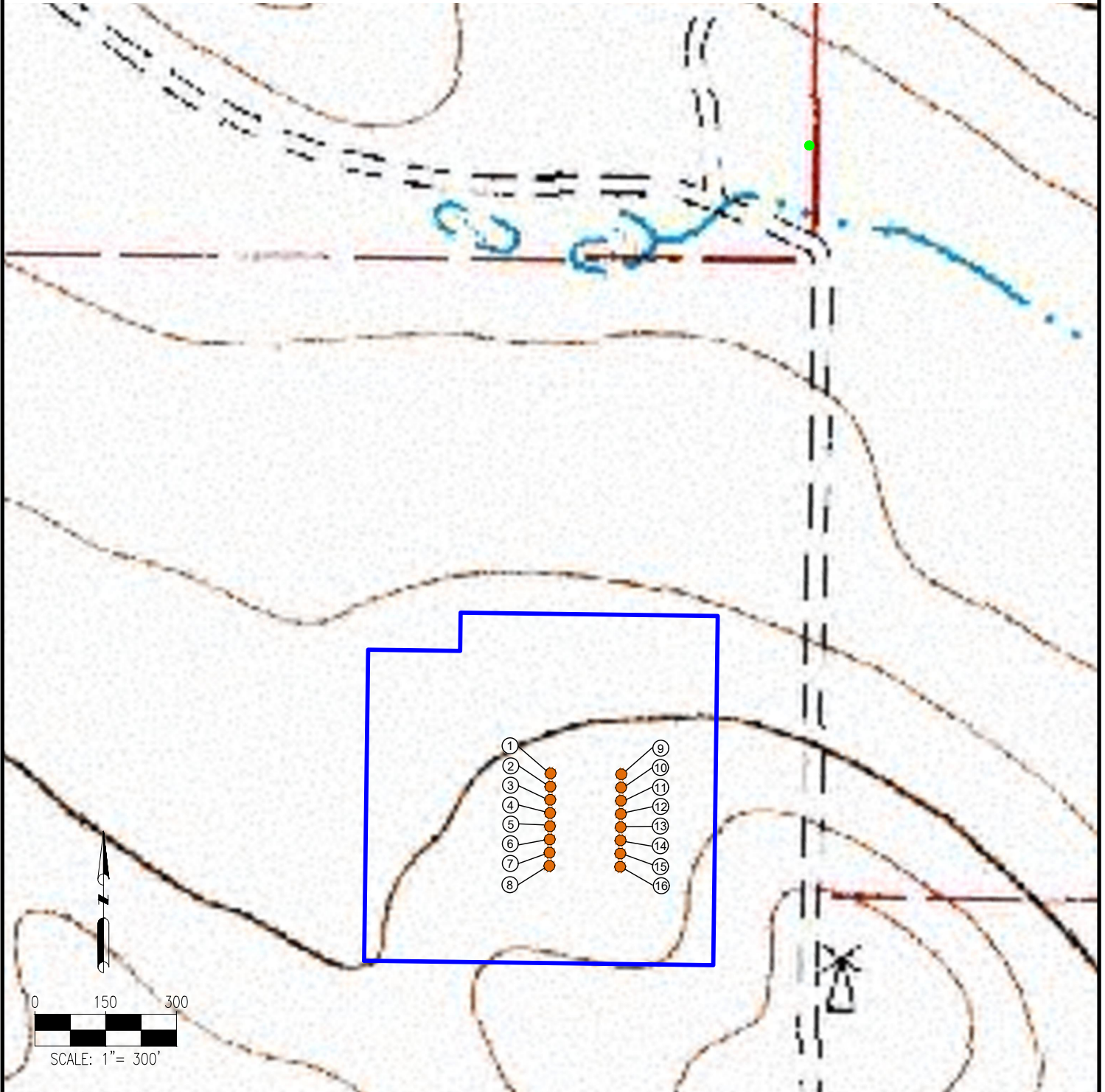


CASTOR 8-59 19 PAD REFERENCE AREA MAP



1. CASTOR FED 8-59 19-24-1
2. CASTOR FED 8-59 19-24-2
3. CASTOR FED 8-59 19-24-3
4. CASTOR FED 8-59 19-24-4
5. CASTOR FED 8-59 19-24-5
6. CASTOR FED 8-59 19-24-6
7. CASTOR FED 8-59 19-24-7
8. CASTOR FED 8-59 19-24-8

9. CASTOR 8-59 19-24-9
10. CASTOR 8-59 19-24-10
11. CASTOR 8-59 19-24-11
12. CASTOR 8-59 19-24-12
13. CASTOR 8-59 19-24-13
14. CASTOR 8-59 19-24-14
15. CASTOR 8-59 19-24-15
16. CASTOR 8-59 19-24-16

REFERENCE LOCATION

REFERENCE PHOTO POINT

LAT: 40.648601° N
LONG: 104.010545° W
ELEVATION: 4828'

DISCLAIMER:
THIS PLOT DOES NOT REPRESENT A MONUMENTED LAND SURVEY AND SHOULD NOT BE RELIED UPON TO DETERMINE BOUNDARY LINES, PROPERTY OWNERSHIP OR OTHER PROPERTY INTERESTS. PARCEL LINES, IF DEPICTED HAVE NOT BEEN FIELD VERIFIED AND MAY BE BASED UPON PUBLICLY AVAILABLE DATA THAT ALSO HAS NOT BEEN INDEPENDENTLY VERIFIED.

DATA SOURCE:
TOPO MAP: USGS

PUBLICLY AVAILABLE DATA SOURCES HAVE NOT BEEN INDEPENDENTLY VERIFIED BY ASCENT.

LEGEND:

- = PROPOSED WELL
- = REFERENCE PHOTO POINT

= DISTURBANCE AREA



7535 Hilltop Circle
Denver, CO 80221
(303) 928-7128
www.ascentgeomatics.com

FIELD DATE:
06-28-17

DRAWING DATE:
07-10-17

BY:
CSG

CHECKED:
DJP

SITE NAME:
CASTOR 8-59 19 PAD

SURFACE LOCATION:

NE 1/4 SE 1/4 SEC. 19, T8N, R59W, 6TH P.M.
WELD COUNTY, COLORADO

PREPARED FOR:

