

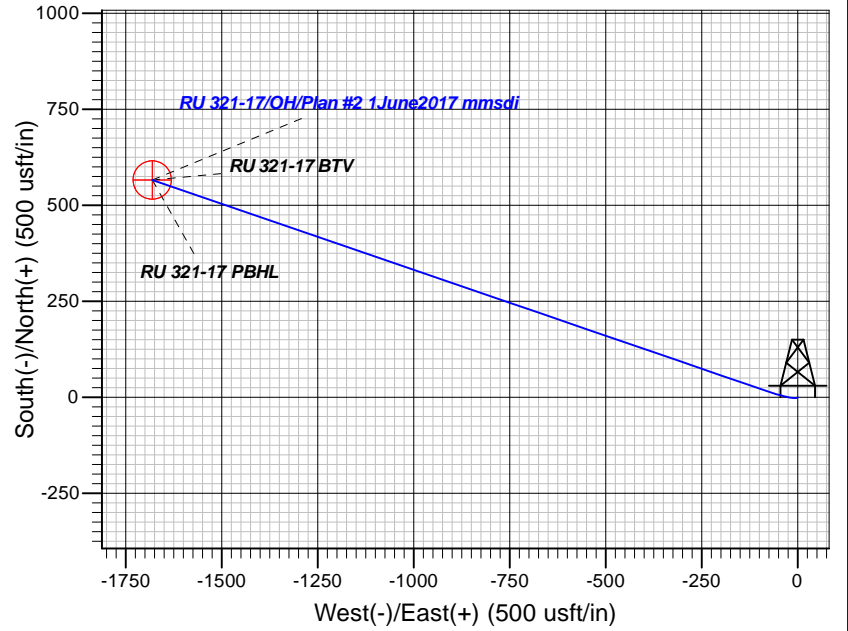
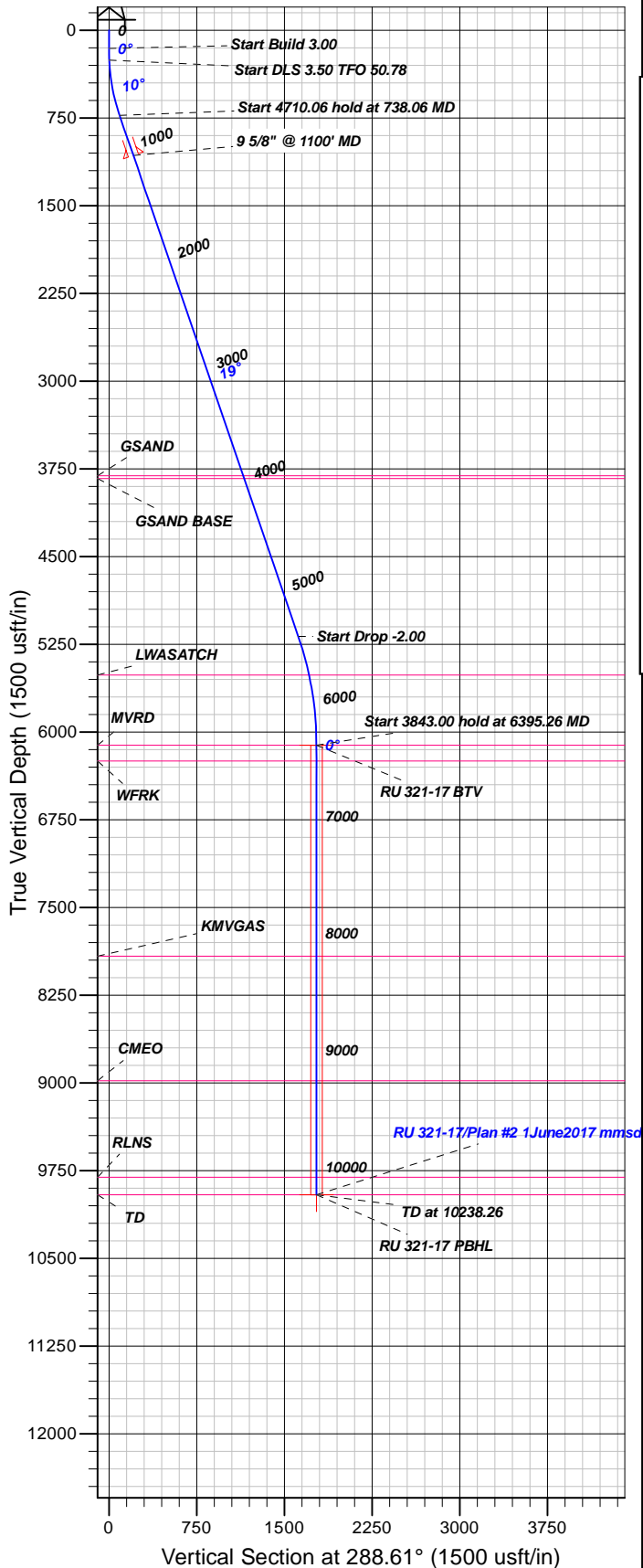
## Well Details: RU 321-17

GL 7859' & RKB 24' @ 7883.00usft (H&P 318)

+N/-S	+E/-W	Northing	Easting	Latitude	Longitude	Slot
0.00	0.00	1596975.90	2351756.30	39.4499791	-107.7958469	RU 321-17

**T M** Azimuths to True North  
Magnetic North: 9.28°

Magnetic Field  
Strength: 51718.6snT  
Dip Angle: 65.65°  
Date: 2/9/2017  
Model: HDGM



### FORMATION TOP DETAILS

TVDPth	MDPath	Formation
3808.00	3994.37	GSAND
3833.00	4020.80	GSAND BASE
5513.00	5790.79	LWASATCH
6113.00	6395.26	MVRD
6248.00	6530.26	WFRK
7916.00	8198.26	KMVGAS
8981.00	9263.26	CMEO
9806.00	10088.26	RLNS
9956.00	10238.26	TD

Plan: Plan #2 1June2017 mmsdi

10:06, June 02 2017  
Created By: Mel Mireles

PROJECT DETAILS: Garfield County, CO NAD83

Geodetic System: US State Plane 1983  
Datum: North American Datum 1983  
Ellipsoid: GRS 1980  
Zone: Colorado Central Zone

System Datum: Mean Sea Level

### CASING DETAILS

TVD	MD	Name	Size
1070.38	1100.00	9 5/8" @ 1100' MD	9.62

### SECTION DETAILS

Sec	MD	Inc	Azi	TVD	+N/-S	+E/-W	Dleg	TFace	VFace	Target
1	0.00	0.00	0.00	0.00	0.00	0.00	0.00	0.00	0.00	
2	155.00	0.00	0.00	155.00	0.00	0.00	0.00	0.00	0.00	
3	255.00	3.00	245.00	254.95	-1.11	-2.37	3.00	245.00	1.90	
4	738.06	18.94	288.95	728.04	19.17	-88.61	3.50	50.78	90.09	
5	5448.12	18.94	288.95	5183.02	515.80	-1534.71	0.00	0.00	1619.07	
6	6395.26	0.00	0.00	6113.00	566.19	-1681.44	2.00	180.00	774.21	RU 321-17 BTV
7	10238.26	0.00	0.00	9956.00	566.19	-1681.44	0.00	0.00	774.21	RU 321-17 PBHL

### DESIGN TARGET DETAILS

Name	TVD	+N/-S	+E/-W	Northing	Easting	Latitude	Longitude	Shape
RU 321-17 BTV	6113.00	566.19	-1681.44	1597584.40	2350089.70	39.4515335	-107.8018015	Circle (Radius: 50.00)
- plan hits target center								
RU 321-17 PBHL	9956.00	566.19	-1681.44	1597584.40	2350089.70	39.4515335	-107.8018015	Point
- plan hits target center								



## **TEP Rocky Mountain LLC**

**Garfield County, CO NAD83**

**RU 31-17 Pad**

**RU 321-17 - Slot RU 321-17**

**OH**

**Plan: Plan #2 1June2017 mmsdi**

## **Standard Planning Report**

**02 June, 2017**



<b>Database:</b>	Grand Junction District	<b>Local Co-ordinate Reference:</b>	Well RU 321-17 - Slot RU 321-17
<b>Company:</b>	TEP Rocky Mountain LLC	<b>TVD Reference:</b>	GL 7859' & RKB 24' @ 7883.00usft (H&P 318)
<b>Project:</b>	Garfield County, CO NAD83	<b>MD Reference:</b>	GL 7859' & RKB 24' @ 7883.00usft (H&P 318)
<b>Site:</b>	RU 31-17 Pad	<b>North Reference:</b>	True
<b>Well:</b>	RU 321-17	<b>Survey Calculation Method:</b>	Minimum Curvature
<b>Wellbore:</b>	OH		
<b>Design:</b>	Plan #2 1June2017 mmsdi		

<b>Project</b>	Garfield County, CO NAD83		
<b>Map System:</b>	US State Plane 1983	<b>System Datum:</b>	Mean Sea Level
<b>Geo Datum:</b>	North American Datum 1983		
<b>Map Zone:</b>	Colorado Central Zone		

<b>Site</b>	RU 31-17 Pad			
<b>Site Position:</b>		<b>Northing:</b>	1,596,940.40 usft	<b>Latitude:</b> 39.4498852
<b>From:</b> Map		<b>Easting:</b>	2,351,805.70 usft	<b>Longitude:</b> -107.7956689
<b>Position Uncertainty:</b>	0.00 usft	<b>Slot Radius:</b>	13.20 in	<b>Grid Convergence:</b> -1.45 °

<b>Well</b>	RU 321-17 - Slot RU 321-17			
<b>Well Position</b>	<b>+N/-S</b> 34.24 usft	<b>Northing:</b>	1,596,975.90 usft	<b>Latitude:</b> 39.4499792
	<b>+E/-W</b> -50.28 usft	<b>Easting:</b>	2,351,756.30 usft	<b>Longitude:</b> -107.7958470
<b>Position Uncertainty</b>	0.00 usft	<b>Wellhead Elevation:</b>	0.00 usft	<b>Ground Level:</b> 7,859.00 usft

<b>Wellbore</b>	OH				
<b>Magnetics</b>	<b>Model Name</b>	<b>Sample Date</b>	<b>Declination (°)</b>	<b>Dip Angle (°)</b>	<b>Field Strength (nT)</b>
	HDGM	2/9/2017	9.28	65.65	51,719

<b>Design</b>	Plan #2 1June2017 mmsdi			
<b>Audit Notes:</b>				
<b>Version:</b>	<b>Phase:</b>	PLAN	<b>Tie On Depth:</b>	0.00
<b>Vertical Section:</b>	<b>Depth From (TVD) (usft)</b>	<b>+N/-S (usft)</b>	<b>+E/-W (usft)</b>	<b>Direction (°)</b>
	0.00	0.00	0.00	288.61

<b>Plan Sections</b>										
Measured Depth (usft)	Inclination (°)	Azimuth (°)	Vertical Depth (usft)	+N/-S (usft)	+E/-W (usft)	Dogleg Rate (°/100usft)	Build Rate (°/100usft)	Turn Rate (°/100usft)	TFO (°)	Target
0.00	0.00	0.00	0.00	0.00	0.00	0.00	0.00	0.00	0.00	
155.00	0.00	0.00	155.00	0.00	0.00	0.00	0.00	0.00	0.00	
255.00	3.00	245.00	254.95	-1.11	-2.37	3.00	3.00	0.00	245.00	
738.06	18.94	288.95	728.04	19.17	-88.61	3.50	3.30	9.10	50.78	
5,448.12	18.94	288.95	5,183.02	515.80	-1,534.71	0.00	0.00	0.00	0.00	
6,395.26	0.00	0.00	6,113.00	566.19	-1,681.44	2.00	-2.00	0.00	180.00	RU 321-17 BTV
10,238.26	0.00	0.00	9,956.00	566.19	-1,681.44	0.00	0.00	0.00	0.00	RU 321-17 PBHL

<b>Database:</b>	Grand Junction District	<b>Local Co-ordinate Reference:</b>	Well RU 321-17 - Slot RU 321-17
<b>Company:</b>	TEP Rocky Mountain LLC	<b>TVD Reference:</b>	GL 7859' & RKB 24' @ 7883.00usft (H&P 318)
<b>Project:</b>	Garfield County, CO NAD83	<b>MD Reference:</b>	GL 7859' & RKB 24' @ 7883.00usft (H&P 318)
<b>Site:</b>	RU 31-17 Pad	<b>North Reference:</b>	True
<b>Well:</b>	RU 321-17	<b>Survey Calculation Method:</b>	Minimum Curvature
<b>Wellbore:</b>	OH		
<b>Design:</b>	Plan #2 1June2017 mmsdi		

Planned Survey										
Measured Depth (usft)	Inclination (°)	Azimuth (°)	Vertical Depth (usft)	+N/-S (usft)	+E/-W (usft)	Vertical Section (usft)	Dogleg Rate (°/100usft)	Build Rate (°/100usft)	Turn Rate (°/100usft)	
0.00	0.00	0.00	0.00	0.00	0.00	0.00	0.00	0.00	0.00	
100.00	0.00	0.00	100.00	0.00	0.00	0.00	0.00	0.00	0.00	
155.00	0.00	0.00	155.00	0.00	0.00	0.00	0.00	0.00	0.00	
200.00	1.35	245.00	200.00	-0.22	-0.48	0.38	3.00	3.00	0.00	
255.00	3.00	245.00	254.95	-1.11	-2.37	1.90	3.00	3.00	0.00	
300.00	4.18	262.00	299.87	-1.83	-5.06	4.21	3.50	2.62	37.77	
400.00	7.35	277.40	399.35	-1.52	-15.01	13.75	3.50	3.17	15.41	
500.00	10.72	283.37	498.10	1.46	-30.41	29.29	3.50	3.38	5.97	
600.00	14.16	286.49	595.74	7.09	-51.20	50.79	3.50	3.44	3.12	
700.00	17.62	288.40	691.90	15.34	-77.30	78.15	3.50	3.46	1.92	
738.06	18.94	288.95	728.04	19.17	-88.61	90.09	3.50	3.47	1.44	
800.00	18.94	288.95	786.63	25.70	-107.63	110.20	0.00	0.00	0.00	
900.00	18.94	288.95	881.21	36.24	-138.33	142.66	0.00	0.00	0.00	
1,000.00	18.94	288.95	975.79	46.79	-169.03	175.12	0.00	0.00	0.00	
1,100.00	18.94	288.95	1,070.38	57.33	-199.73	207.59	0.00	0.00	0.00	
9 5/8" @ 1100' MD										
1,200.00	18.94	288.95	1,164.96	67.87	-230.44	240.05	0.00	0.00	0.00	
1,300.00	18.94	288.95	1,259.55	78.42	-261.14	272.51	0.00	0.00	0.00	
1,400.00	18.94	288.95	1,354.13	88.96	-291.84	304.97	0.00	0.00	0.00	
1,500.00	18.94	288.95	1,448.72	99.51	-322.54	337.43	0.00	0.00	0.00	
1,600.00	18.94	288.95	1,543.30	110.05	-353.25	369.90	0.00	0.00	0.00	
1,700.00	18.94	288.95	1,637.88	120.59	-383.95	402.36	0.00	0.00	0.00	
1,800.00	18.94	288.95	1,732.47	131.14	-414.65	434.82	0.00	0.00	0.00	
1,900.00	18.94	288.95	1,827.05	141.68	-445.35	467.28	0.00	0.00	0.00	
2,000.00	18.94	288.95	1,921.64	152.23	-476.06	499.74	0.00	0.00	0.00	
2,100.00	18.94	288.95	2,016.22	162.77	-506.76	532.20	0.00	0.00	0.00	
2,200.00	18.94	288.95	2,110.81	173.31	-537.46	564.67	0.00	0.00	0.00	
2,300.00	18.94	288.95	2,205.39	183.86	-568.16	597.13	0.00	0.00	0.00	
2,400.00	18.94	288.95	2,299.98	194.40	-598.86	629.59	0.00	0.00	0.00	
2,500.00	18.94	288.95	2,394.56	204.95	-629.57	662.05	0.00	0.00	0.00	
2,600.00	18.94	288.95	2,489.14	215.49	-660.27	694.51	0.00	0.00	0.00	
2,700.00	18.94	288.95	2,583.73	226.03	-690.97	726.98	0.00	0.00	0.00	
2,800.00	18.94	288.95	2,678.31	236.58	-721.67	759.44	0.00	0.00	0.00	
2,900.00	18.94	288.95	2,772.90	247.12	-752.38	791.90	0.00	0.00	0.00	
3,000.00	18.94	288.95	2,867.48	257.67	-783.08	824.36	0.00	0.00	0.00	
3,100.00	18.94	288.95	2,962.07	268.21	-813.78	856.82	0.00	0.00	0.00	
3,200.00	18.94	288.95	3,056.65	278.75	-844.48	889.28	0.00	0.00	0.00	
3,300.00	18.94	288.95	3,151.23	289.30	-875.19	921.75	0.00	0.00	0.00	
3,400.00	18.94	288.95	3,245.82	299.84	-905.89	954.21	0.00	0.00	0.00	
3,500.00	18.94	288.95	3,340.40	310.39	-936.59	986.67	0.00	0.00	0.00	
3,600.00	18.94	288.95	3,434.99	320.93	-967.29	1,019.13	0.00	0.00	0.00	
3,700.00	18.94	288.95	3,529.57	331.48	-997.99	1,051.59	0.00	0.00	0.00	
3,800.00	18.94	288.95	3,624.16	342.02	-1,028.70	1,084.06	0.00	0.00	0.00	
3,900.00	18.94	288.95	3,718.74	352.56	-1,059.40	1,116.52	0.00	0.00	0.00	
3,994.37	18.94	288.95	3,808.00	362.51	-1,088.37	1,147.15	0.00	0.00	0.00	
GSAND										
4,000.00	18.94	288.95	3,813.32	363.11	-1,090.10	1,148.98	0.00	0.00	0.00	
4,020.80	18.94	288.95	3,833.00	365.30	-1,096.49	1,155.73	0.00	0.00	0.00	
GSAND BASE										
4,100.00	18.94	288.95	3,907.91	373.65	-1,120.80	1,181.44	0.00	0.00	0.00	
4,200.00	18.94	288.95	4,002.49	384.20	-1,151.51	1,213.90	0.00	0.00	0.00	
4,300.00	18.94	288.95	4,097.08	394.74	-1,182.21	1,246.36	0.00	0.00	0.00	

<b>Database:</b>	Grand Junction District	<b>Local Co-ordinate Reference:</b>	Well RU 321-17 - Slot RU 321-17
<b>Company:</b>	TEP Rocky Mountain LLC	<b>TVD Reference:</b>	GL 7859' & RKB 24' @ 7883.00usft (H&P 318)
<b>Project:</b>	Garfield County, CO NAD83	<b>MD Reference:</b>	GL 7859' & RKB 24' @ 7883.00usft (H&P 318)
<b>Site:</b>	RU 31-17 Pad	<b>North Reference:</b>	True
<b>Well:</b>	RU 321-17	<b>Survey Calculation Method:</b>	Minimum Curvature
<b>Wellbore:</b>	OH		
<b>Design:</b>	Plan #2 1June2017 mmsdi		

Planned Survey										
Measured Depth (usft)	Inclination (°)	Azimuth (°)	Vertical Depth (usft)	+N/-S (usft)	+E/-W (usft)	Vertical Section (usft)	Dogleg Rate (°/100usft)	Build Rate (°/100usft)	Turn Rate (°/100usft)	
4,400.00	18.94	288.95	4,191.66	405.28	-1,212.91	1,278.83	0.00	0.00	0.00	
4,500.00	18.94	288.95	4,286.25	415.83	-1,243.61	1,311.29	0.00	0.00	0.00	
4,600.00	18.94	288.95	4,380.83	426.37	-1,274.32	1,343.75	0.00	0.00	0.00	
4,700.00	18.94	288.95	4,475.41	436.92	-1,305.02	1,376.21	0.00	0.00	0.00	
4,800.00	18.94	288.95	4,570.00	447.46	-1,335.72	1,408.67	0.00	0.00	0.00	
4,900.00	18.94	288.95	4,664.58	458.00	-1,366.42	1,441.14	0.00	0.00	0.00	
5,000.00	18.94	288.95	4,759.17	468.55	-1,397.12	1,473.60	0.00	0.00	0.00	
5,100.00	18.94	288.95	4,853.75	479.09	-1,427.83	1,506.06	0.00	0.00	0.00	
5,200.00	18.94	288.95	4,948.34	489.64	-1,458.53	1,538.52	0.00	0.00	0.00	
5,300.00	18.94	288.95	5,042.92	500.18	-1,489.23	1,570.98	0.00	0.00	0.00	
5,400.00	18.94	288.95	5,137.50	510.72	-1,519.93	1,603.45	0.00	0.00	0.00	
5,448.12	18.94	288.95	5,183.02	515.80	-1,534.71	1,619.07	0.00	0.00	0.00	
5,500.00	17.91	288.95	5,232.24	521.12	-1,550.21	1,635.46	2.00	-2.00	0.00	
5,600.00	15.91	288.95	5,327.91	530.57	-1,577.72	1,664.54	2.00	-2.00	0.00	
5,700.00	13.91	288.95	5,424.54	538.92	-1,602.04	1,690.26	2.00	-2.00	0.00	
5,790.79	12.09	288.95	5,513.00	545.56	-1,621.35	1,710.68	2.00	-2.00	0.00	
LWASATCH										
5,800.00	11.91	288.95	5,522.01	546.18	-1,623.16	1,712.59	2.00	-2.00	0.00	
5,900.00	9.91	288.95	5,620.20	552.32	-1,641.06	1,731.51	2.00	-2.00	0.00	
6,000.00	7.91	288.95	5,718.99	557.35	-1,655.70	1,746.99	2.00	-2.00	0.00	
6,100.00	5.91	288.95	5,818.26	561.25	-1,667.07	1,759.01	2.00	-2.00	0.00	
6,200.00	3.91	288.95	5,917.89	564.03	-1,675.15	1,767.56	2.00	-2.00	0.00	
6,300.00	1.91	288.95	6,017.76	565.68	-1,679.95	1,772.63	2.00	-2.00	0.00	
6,395.26	0.00	0.00	6,113.00	566.19	-1,681.44	1,774.21	2.00	-2.00	0.00	
MVRD - RU 321-17 BTV										
6,400.00	0.00	0.00	6,117.74	566.19	-1,681.44	1,774.21	0.00	0.00	0.00	
6,500.00	0.00	0.00	6,217.74	566.19	-1,681.44	1,774.21	0.00	0.00	0.00	
6,530.26	0.00	0.00	6,248.00	566.19	-1,681.44	1,774.21	0.00	0.00	0.00	
WFRK										
6,600.00	0.00	0.00	6,317.74	566.19	-1,681.44	1,774.21	0.00	0.00	0.00	
6,700.00	0.00	0.00	6,417.74	566.19	-1,681.44	1,774.21	0.00	0.00	0.00	
6,800.00	0.00	0.00	6,517.74	566.19	-1,681.44	1,774.21	0.00	0.00	0.00	
6,900.00	0.00	0.00	6,617.74	566.19	-1,681.44	1,774.21	0.00	0.00	0.00	
7,000.00	0.00	0.00	6,717.74	566.19	-1,681.44	1,774.21	0.00	0.00	0.00	
7,100.00	0.00	0.00	6,817.74	566.19	-1,681.44	1,774.21	0.00	0.00	0.00	
7,200.00	0.00	0.00	6,917.74	566.19	-1,681.44	1,774.21	0.00	0.00	0.00	
7,300.00	0.00	0.00	7,017.74	566.19	-1,681.44	1,774.21	0.00	0.00	0.00	
7,400.00	0.00	0.00	7,117.74	566.19	-1,681.44	1,774.21	0.00	0.00	0.00	
7,500.00	0.00	0.00	7,217.74	566.19	-1,681.44	1,774.21	0.00	0.00	0.00	
7,600.00	0.00	0.00	7,317.74	566.19	-1,681.44	1,774.21	0.00	0.00	0.00	
7,700.00	0.00	0.00	7,417.74	566.19	-1,681.44	1,774.21	0.00	0.00	0.00	
7,800.00	0.00	0.00	7,517.74	566.19	-1,681.44	1,774.21	0.00	0.00	0.00	
7,900.00	0.00	0.00	7,617.74	566.19	-1,681.44	1,774.21	0.00	0.00	0.00	
8,000.00	0.00	0.00	7,717.74	566.19	-1,681.44	1,774.21	0.00	0.00	0.00	
8,100.00	0.00	0.00	7,817.74	566.19	-1,681.44	1,774.21	0.00	0.00	0.00	
8,198.26	0.00	0.00	7,916.00	566.19	-1,681.44	1,774.21	0.00	0.00	0.00	
KIMGAS										
8,200.00	0.00	0.00	7,917.74	566.19	-1,681.44	1,774.21	0.00	0.00	0.00	
8,300.00	0.00	0.00	8,017.74	566.19	-1,681.44	1,774.21	0.00	0.00	0.00	
8,400.00	0.00	0.00	8,117.74	566.19	-1,681.44	1,774.21	0.00	0.00	0.00	
8,500.00	0.00	0.00	8,217.74	566.19	-1,681.44	1,774.21	0.00	0.00	0.00	

<b>Database:</b>	Grand Junction District	<b>Local Co-ordinate Reference:</b>	Well RU 321-17 - Slot RU 321-17
<b>Company:</b>	TEP Rocky Mountain LLC	<b>TVD Reference:</b>	GL 7859' & RKB 24' @ 7883.00usft (H&P 318)
<b>Project:</b>	Garfield County, CO NAD83	<b>MD Reference:</b>	GL 7859' & RKB 24' @ 7883.00usft (H&P 318)
<b>Site:</b>	RU 31-17 Pad	<b>North Reference:</b>	True
<b>Well:</b>	RU 321-17	<b>Survey Calculation Method:</b>	Minimum Curvature
<b>Wellbore:</b>	OH		
<b>Design:</b>	Plan #2 1June2017 mmsdi		

Planned Survey										
Measured Depth (usft)	Inclination (°)	Azimuth (°)	Vertical Depth (usft)	+N/-S (usft)	+E/-W (usft)	Vertical Section (usft)	Dogleg Rate (°/100usft)	Build Rate (°/100usft)	Turn Rate (°/100usft)	
8,600.00	0.00	0.00	8,317.74	566.19	-1,681.44	1,774.21	0.00	0.00	0.00	
8,700.00	0.00	0.00	8,417.74	566.19	-1,681.44	1,774.21	0.00	0.00	0.00	
8,800.00	0.00	0.00	8,517.74	566.19	-1,681.44	1,774.21	0.00	0.00	0.00	
8,900.00	0.00	0.00	8,617.74	566.19	-1,681.44	1,774.21	0.00	0.00	0.00	
9,000.00	0.00	0.00	8,717.74	566.19	-1,681.44	1,774.21	0.00	0.00	0.00	
9,100.00	0.00	0.00	8,817.74	566.19	-1,681.44	1,774.21	0.00	0.00	0.00	
9,200.00	0.00	0.00	8,917.74	566.19	-1,681.44	1,774.21	0.00	0.00	0.00	
9,263.26	0.00	0.00	8,981.00	566.19	-1,681.44	1,774.21	0.00	0.00	0.00	
<b>CMEO</b>										
9,300.00	0.00	0.00	9,017.74	566.19	-1,681.44	1,774.21	0.00	0.00	0.00	
9,400.00	0.00	0.00	9,117.74	566.19	-1,681.44	1,774.21	0.00	0.00	0.00	
9,500.00	0.00	0.00	9,217.74	566.19	-1,681.44	1,774.21	0.00	0.00	0.00	
9,600.00	0.00	0.00	9,317.74	566.19	-1,681.44	1,774.21	0.00	0.00	0.00	
9,700.00	0.00	0.00	9,417.74	566.19	-1,681.44	1,774.21	0.00	0.00	0.00	
9,800.00	0.00	0.00	9,517.74	566.19	-1,681.44	1,774.21	0.00	0.00	0.00	
9,900.00	0.00	0.00	9,617.74	566.19	-1,681.44	1,774.21	0.00	0.00	0.00	
10,000.00	0.00	0.00	9,717.74	566.19	-1,681.44	1,774.21	0.00	0.00	0.00	
10,088.26	0.00	0.00	9,806.00	566.19	-1,681.44	1,774.21	0.00	0.00	0.00	
<b>RLNS</b>										
10,100.00	0.00	0.00	9,817.74	566.19	-1,681.44	1,774.21	0.00	0.00	0.00	
10,200.00	0.00	0.00	9,917.74	566.19	-1,681.44	1,774.21	0.00	0.00	0.00	
10,238.26	0.00	0.00	9,956.00	566.19	-1,681.44	1,774.21	0.00	0.00	0.00	
<b>TD - RU 321-17 PBHL</b>										

Design Targets									
Target Name - hit/miss target - Shape	Dip Angle (°)	Dip Dir. (°)	TVD (usft)	+N/-S (usft)	+E/-W (usft)	Northing (usft)	Easting (usft)	Latitude	Longitude
RU 321-17 BTV - plan hits target center - Circle (radius 50.00)	0.00	0.00	6,113.00	566.19	-1,681.44	1,597,584.40	2,350,089.70	39.4515335	-107.8018016
RU 321-17 PBHL - plan hits target center - Point	0.00	0.00	9,956.00	566.19	-1,681.44	1,597,584.40	2,350,089.70	39.4515335	-107.8018016

Casing Points					
Measured Depth (usft)	Vertical Depth (usft)	Name	Casing Diameter (in)	Hole Diameter (in)	
1,100.00	1,070.38	9 5/8" @ 1100' MD	9.62	9.62	

<b>Database:</b>	Grand Junction District	<b>Local Co-ordinate Reference:</b>	Well RU 321-17 - Slot RU 321-17
<b>Company:</b>	TEP Rocky Mountain LLC	<b>TVD Reference:</b>	GL 7859' & RKB 24' @ 7883.00usft (H&P 318)
<b>Project:</b>	Garfield County, CO NAD83	<b>MD Reference:</b>	GL 7859' & RKB 24' @ 7883.00usft (H&P 318)
<b>Site:</b>	RU 31-17 Pad	<b>North Reference:</b>	True
<b>Well:</b>	RU 321-17	<b>Survey Calculation Method:</b>	Minimum Curvature
<b>Wellbore:</b>	OH		
<b>Design:</b>	Plan #2 1June2017 mmsdi		

Formations						
	Measured Depth (usft)	Vertical Depth (usft)	Name	Lithology	Dip (°)	Dip Direction (°)
	3,994.37	3,203.00	GSAND		0.00	0.00
	4,020.80	3,228.00	GSAND BASE		0.00	0.00
	5,790.79	4,908.00	LWASATCH		0.00	0.00
	6,395.26	5,508.00	MVRD		0.00	0.00
	6,530.26	5,643.00	WFRK		0.00	0.00
	8,198.26	7,311.00	KMVGAS		0.00	0.00
	9,263.26	8,376.00	CMEO		0.00	0.00
	10,088.26	9,201.00	RLNS		0.00	0.00
	10,238.26	9,351.00	TD		0.00	0.00