



123-24175



RECEIVED

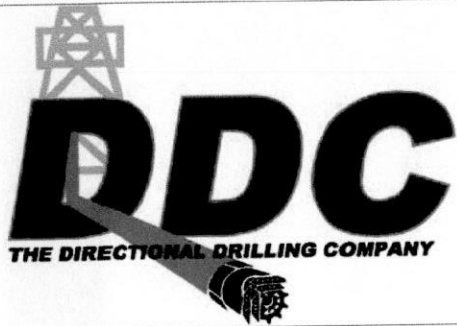
NOV 26 07

COGCC

Directional
Survey

I **Larry Wright**, certify that I am employed by **DDC LP**. That I did on the day(s) of **12/22/06** thru **1/1/07** conduct or supervise the taking of a **MWD Survey(s)** from Surface to a depth of **8440** feet; that the data is true, correct, complete and within the limitations of the tool as set forth by **DDC LP.**; that I am authorized and qualified to make this report; that this survey was conducted at the request of **Mineral Resources**, for the **Wheeler D3** Well in **Weld County, Colorado**; and that I have reviewed this report and find that it conforms to the principles and procedures as set forth by **DDC LP**.

Larry Wright



Job Number: RM-06404
 Company: Mineral Resources
 Lease/Well: Wheeler D3
 Location: Weld County
 Rig Name: LAGS Exploration #111
 RKB:
 G.L. or M.S.L.: 4673.9'

State/Country: Colorado / USA
 Declination:
 Grid:
 File name: Z:\2006\Q060450\Q060451\Q060451.SVY
 Date/Time: 03-Jan-07 / 11:38
 Curve Name: As-Drilled Wheeler D3

WINSERVE SURVEY CALCULATIONS
 Minimum Curvature Method
 Vertical Section Plane 301.90
 Vertical Section Referenced to Wellhead
 Rectangular Coordinates Referenced to Wellhead

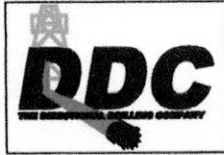
RECEIVED
 NOV 26 07
 COGCC

Measured Depth FT	Incl Angle Deg	Drift Direction Deg	True Vertical Depth	Vertical Section FT	Dogleg Severity Deg/100	N-S FT	E-W FT	CLOSURE		Grid X FT	Grid Y FT
								Distance FT	Direction Deg		
.00	.00	.00	.00	.00	.00	.00	.00	.00	.00	3227839.15	1386438.21
First MWD Survey											
78.00	.70	245.60	78.00	.26	.90	-.20	-.43	.48	245.60	3227838.72	1386438.01
200.00	2.80	289.90	199.94	3.59	1.93	.51	-3.91	3.95	277.42	3227835.24	1386438.72
321.00	9.10	296.30	320.23	16.02	5.23	5.76	-15.28	16.33	290.65	3227823.87	1386443.97
443.00	15.50	292.70	439.37	41.74	5.28	16.34	-39.00	42.28	292.73	3227800.15	1386454.55
565.00	20.80	294.50	555.25	79.34	4.37	31.62	-73.77	80.26	293.20	3227765.38	1386469.83
685.00	25.30	299.10	665.66	126.11	4.04	52.94	-115.59	127.14	294.61	3227723.56	1386491.15
805.00	29.90	300.50	771.97	181.65	3.87	80.61	-163.79	182.55	296.20	3227675.36	1386518.82
972.00	34.10	300.10	913.56	270.09	2.52	125.23	-240.19	270.88	297.54	3227598.96	1386563.44
1096.00	36.60	302.90	1014.70	341.81	2.40	162.75	-301.31	342.46	298.37	3227537.84	1386600.96
1222.00	35.70	301.90	1116.44	416.13	.85	202.58	-364.06	416.63	299.09	3227475.09	1386640.79
1346.00	36.80	302.90	1216.44	489.45	1.01	241.87	-425.97	489.85	299.59	3227413.18	1386680.08

Measured Depth FT	Incl Angle Deg	Drift Direction Deg	True Vertical Depth	Vertical Section FT	Dogleg Severity Deg/100	C L O S U R E					
						N-S FT	E-W FT	Distance FT	Direction Deg	Grid X FT	Grid Y FT
1472.00	38.00	304.30	1316.54	565.94	1.17	284.23	-489.70	566.21	300.13	3227349.45	1386722.44
1597.00	36.30	303.30	1416.17	641.38	1.44	326.23	-552.41	641.55	300.56	3227286.74	1386764.44
1657.00	35.20	304.70	1464.86	676.41	2.28	345.83	-581.48	676.55	300.74	3227257.67	1386784.04
1783.00	36.80	304.00	1566.80	750.40	1.31	387.61	-642.62	750.47	301.10	3227196.53	1386825.82
1908.00	35.90	303.30	1667.47	824.45	.79	428.67	-704.30	824.49	301.33	3227134.85	1386866.88
2033.00	35.90	304.70	1768.73	897.69	.66	469.65	-765.06	897.71	301.54	3227074.09	1386907.86
2159.00	35.50	304.70	1871.05	971.13	.32	511.51	-825.51	971.13	301.78	3227013.64	1386949.72
2284.00	35.00	306.50	1973.13	1043.12	.92	553.49	-884.16	1043.12	302.05	3226954.99	1386991.70
2468.00	36.10	302.90	2122.85	1149.93	1.28	614.33	-972.11	1149.96	302.29	3226867.04	1387052.54
2592.00	34.70	303.60	2223.93	1221.74	1.18	653.71	-1032.18	1221.78	302.35	3226806.97	1387091.92
2717.00	35.00	302.90	2326.51	1293.15	.40	692.87	-1091.92	1293.19	302.40	3226747.23	1387131.08
2811.00	36.40	301.50	2402.84	1347.99	1.72	722.09	-1138.33	1348.04	302.39	3226700.82	1387160.30
2967.00	35.20	301.50	2529.37	1439.24	.77	769.77	-1216.14	1439.28	302.33	3226623.01	1387207.98
3094.00	37.50	301.50	2631.65	1514.51	1.81	809.10	-1280.32	1514.55	302.29	3226558.83	1387247.31
3219.00	38.50	301.50	2730.15	1591.47	.80	849.31	-1345.93	1591.50	302.25	3226493.22	1387287.52
3344.00	37.30	301.50	2828.78	1668.25	.96	889.43	-1411.40	1668.27	302.22	3226427.75	1387327.64
3470.00	36.60	303.30	2929.48	1743.98	1.02	930.00	-1475.35	1744.01	302.23	3226363.80	1387368.21
3595.00	35.70	301.90	3030.41	1817.71	.98	969.73	-1537.46	1817.74	302.24	3226301.69	1387407.94
3720.00	34.30	302.90	3132.80	1889.40	1.21	1008.14	-1598.00	1889.43	302.25	3226241.15	1387446.35
3845.00	34.50	304.00	3235.94	1959.99	.52	1047.07	-1656.92	1960.03	302.29	3226182.23	1387485.28
3971.00	34.70	302.90	3339.66	2031.51	.52	1086.50	-1716.62	2031.57	302.33	3226122.53	1387524.71
4094.00	35.20	301.20	3440.48	2101.96	.89	1123.88	-1776.34	2102.02	302.32	3226062.81	1387562.09
4218.00	36.10	299.40	3541.24	2174.20	1.11	1160.33	-1838.74	2174.24	302.25	3226000.41	1387598.54
4279.00	35.50	300.80	3590.72	2209.86	1.66	1178.22	-1869.61	2209.90	302.22	3225969.54	1387616.43
4372.00	37.10	302.90	3665.67	2264.91	2.18	1207.29	-1916.36	2264.94	302.21	3225922.79	1387645.50
4528.00	40.10	305.40	3787.58	2362.13	2.17	1261.96	-1996.84	2362.18	302.29	3225842.31	1387700.17
4654.00	39.60	305.80	3884.31	2442.70	.45	1308.96	-2062.49	2442.79	302.40	3225776.66	1387747.17
4780.00	38.00	306.50	3982.51	2521.43	1.32	1355.53	-2126.24	2521.58	302.52	3225712.91	1387793.74
4906.00	36.30	304.30	4082.94	2597.37	1.71	1399.62	-2188.24	2597.56	302.60	3225650.91	1387837.83
5034.00	37.80	300.80	4185.10	2674.45	2.02	1441.06	-2253.24	2674.65	302.60	3225585.91	1387879.27
5161.00	36.10	301.20	4286.59	2750.78	1.35	1480.38	-2318.68	2750.96	302.56	3225520.47	1387918.59
5352.00	38.20	301.50	4438.82	2866.12	1.10	1540.39	-2417.18	2866.28	302.51	3225421.97	1387978.60
5479.00	37.80	301.20	4538.90	2944.30	.35	1581.07	-2483.95	2944.45	302.48	3225355.20	1388019.28

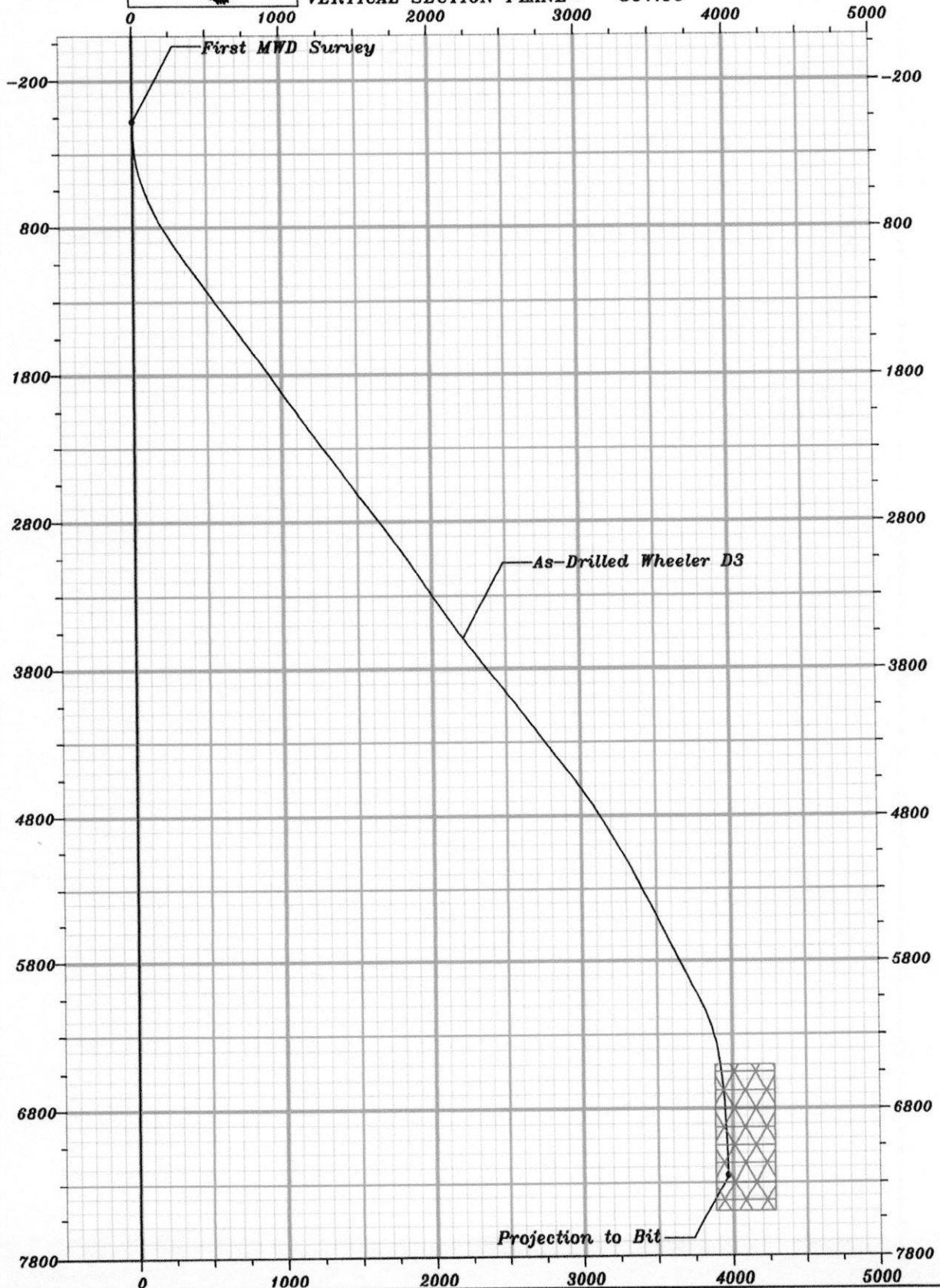
Measured Depth FT	Incl Angle Deg	Drift Direction Deg	True Vertical Depth	Vertical Section FT	Dogleg Severity Deg/100	C L O S U R E					
						N-S FT	E-W FT	Distance FT	Direction Deg	Grid X FT	Grid Y FT
5607.00	36.80	300.10	4640.72	3021.85	.94	1620.62	-2550.67	3021.97	302.43	3225288.48	1388058.83
5734.00	32.40	303.30	4745.24	3093.92	3.75	1658.40	-2612.05	3094.04	302.41	3225227.10	1388096.61
5861.00	30.30	312.40	4853.76	3159.48	4.07	1698.71	-2664.19	3159.67	302.52	3225174.96	1388136.92
5987.00	31.10	309.30	4962.10	3223.01	1.41	1740.76	-2712.84	3223.31	302.69	3225126.31	1388178.97
6176.00	28.00	294.90	5126.71	3315.59	4.09	1790.43	-2790.98	3315.90	302.68	3225048.17	1388228.64
6302.00	28.50	289.20	5237.72	3374.28	2.18	1812.77	-2846.20	3374.46	302.49	3224992.95	1388250.98
6428.00	26.40	290.30	5349.53	3431.06	1.71	1832.38	-2900.87	3431.13	302.28	3224938.28	1388270.59
6555.00	25.00	295.50	5463.98	3485.39	2.09	1853.73	-2951.58	3485.42	302.13	3224887.57	1388291.94
6680.00	26.40	295.90	5576.61	3539.28	1.13	1877.24	-3000.42	3539.29	302.03	3224838.73	1388315.45
6807.00	26.40	301.20	5690.38	3595.60	1.86	1904.20	-3049.98	3595.60	301.98	3224789.17	1388342.41
6933.00	27.30	300.80	5802.80	3652.50	.73	1933.51	-3098.76	3652.50	301.96	3224740.39	1388371.72
7058.00	27.10	301.50	5913.98	3709.63	.30	1963.06	-3147.66	3709.63	301.95	3224691.49	1388401.27
7183.00	27.30	295.90	6025.17	3766.62	2.05	1990.47	-3197.73	3766.62	301.90	3224641.42	1388428.68
7307.00	24.60	301.20	6136.67	3820.73	2.87	2016.27	-3245.40	3820.73	301.85	3224593.75	1388454.48
7434.00	17.60	300.80	6255.09	3866.41	5.51	2039.82	-3284.55	3866.42	301.84	3224554.60	1388478.03
7561.00	11.60	300.50	6377.93	3898.40	4.72	2056.15	-3312.07	3898.41	301.83	3224527.08	1388494.36
7687.00	7.70	300.80	6502.12	3919.52	3.10	2066.90	-3330.25	3919.52	301.83	3224508.90	1388505.11
7811.00	5.80	300.10	6625.26	3934.09	1.53	2074.30	-3342.80	3934.09	301.82	3224496.35	1388512.51
7938.00	4.20	300.50	6751.77	3945.15	1.26	2079.88	-3352.36	3945.15	301.82	3224486.79	1388518.09
8064.00	3.20	289.20	6877.51	3953.19	.98	2083.38	-3359.66	3953.20	301.80	3224479.49	1388521.59
8191.00	2.30	307.10	7004.36	3959.19	.97	2086.08	-3365.04	3959.20	301.80	3224474.11	1388524.29
8318.00	1.90	313.50	7131.28	3963.79	.36	2089.07	-3368.60	3963.79	301.81	3224470.55	1388527.28
8390.00	1.90	321.20	7203.24	3966.08	.35	2090.82	-3370.21	3966.09	301.81	3224468.94	1388529.03
Projection to Bit											
8440.00	1.90	321.20	7253.21	3967.65	.00	2092.11	-3371.25	3967.65	301.82	3224467.90	1388530.32

Mineral Resources, Inc.

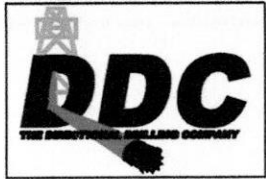


Wheeler D3
Weld County, Colorado
RM-06404

VERTICAL SECTION
SCALE: 1 inch = 1000'
VERTICAL SECTION PLANE = 301.90

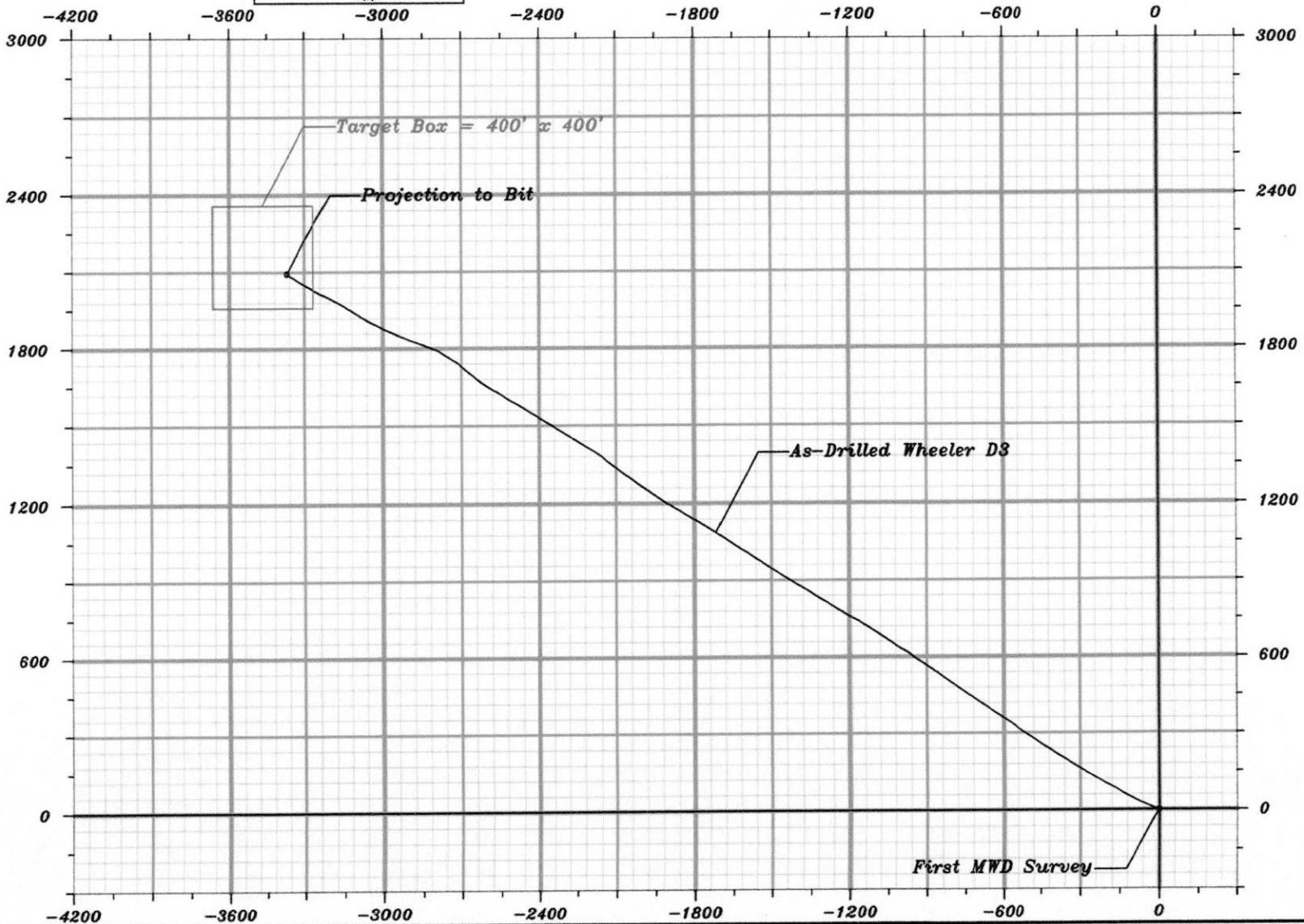


Mineral Resources, Inc.



PLAN VIEW
SCALE: 1 inch = 600'

Wheeler D3
Weld County, Colorado
RM-06404



MINERAL RESOURCES, INC.

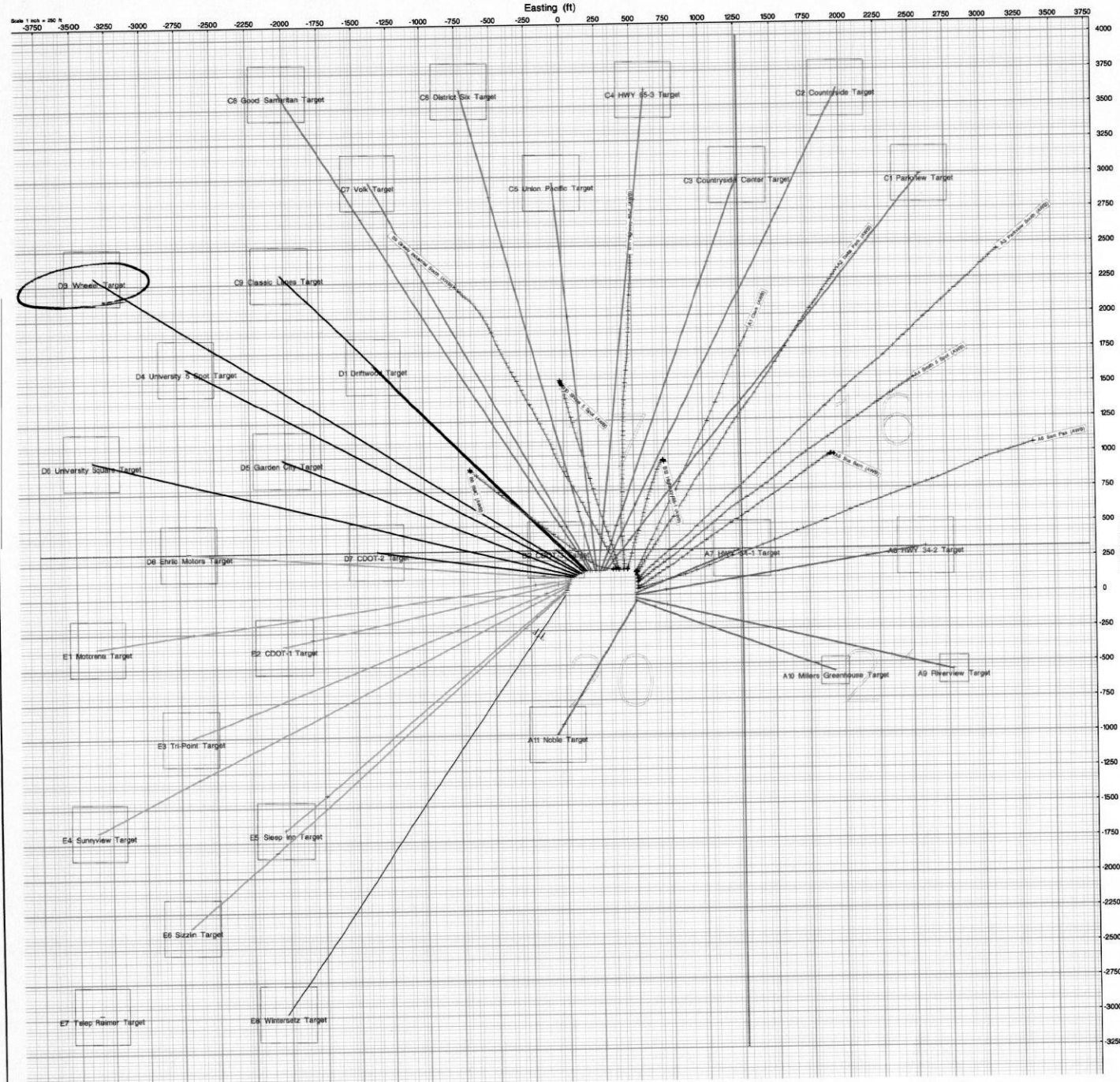
Location: COLORADO
 Field: WELD COUNTY
 Facility: SEC.20-T5N-R65W

Slot: E8 WINTERSETZ
 Well: E8 WINTERSETZ
 Wellbore: E8 WINTERSETZ PWB

Plot reference wellpath is E8 WINTERSETZ PWB
 True vertical depths are referenced to Rig on E8 WINTERSETZ (RT)
 Measured depths are referenced to Rig on E8 WINTERSETZ (RT)
 Rig on E8 WINTERSETZ (RT) to Mean Sea Level: 0 feet
 Mean Sea Level to Mud line (Facility - SEC.20-T5N-R65W): 0 feet
 Coordinates are in feet referenced to Slot

Grid System: NAD83 / Lambert Colorado State Planes, Northern Zone (50), US feet
 North Reference: True north
 Scale: True distance
 Depths are in feet
 Created by: L. Doubek on 6/16/2006

Facility Name	Location Information			
	Grid East (50)	Grid North (50)	Latitude	Longitude
SEC.20-T5N-R65W	305888.330	104876.750	40° 27' 14.830" N	104° 47' 19.400" W
Well Name	Local N (ft)	Local E (ft)	Grid East (50)	Grid North (50)
E8 WINTERSETZ	1632.78	7184.35	307744.431	104653.673
A1 Chan	168.32	2383.81	308204.387	104641.841
A10 Millers Greenhouse	258.27	2374.55	308204.387	104641.841
A11 Noble	377.62	2375.44	308205.848	104627.377
A2 Delta Park	447.29	2383.81	308204.383	104641.841
A2 Parkview South	448.77	2389.82	308205.848	104643.324
A1 Smith 8 Spot	1638.91	2387.02	308206.286	104643.460
A3 Bu. Bnd	236.25	2388.13	308205.848	104643.324
A4 Sun. Pat.	300.83	2388.13	308205.848	104643.324
A4 HWY 34-1	333.27	2375.22	308205.848	104643.324
A4 HWY 34-2	333.78	2375.18	308205.848	104643.324
A6 Riverview	520.28	2375.74	308205.848	104643.324
B1 Shute 5 Spot	1468.19	2384.82	308206.286	104643.460
B11 Highway 85-1	1468.47	2380.73	308205.848	104643.324
B12 Highway 85-1	1467.98	2380.73	308205.848	104643.324
B3 BNC	1467.78	2384.19	308206.286	104643.460
B3 Gray Industrial South	1467.78	2384.19	308206.286	104643.460
C1 Parkview	1468.23	2371.54	308202.007	104649.477
C2 Countryside	1468.08	2371.54	308202.007	104649.477
C3 Countryside Center	1468.41	2371.54	308202.007	104649.477
C4 HWY 85-3	1468.77	2371.54	308202.007	104649.477
C5 LINCH PACIFIC	1468.74	2371.54	308202.007	104649.477
C6 DISTRICT BK	1468.92	2371.54	308202.007	104649.477
C7 VOLK	1468.37	2371.54	308202.007	104649.477
C8 GOOD SAMARITAN	1468.91	2371.54	308202.007	104649.477
C9 CLASSIC LINES	1468.54	2371.54	308202.007	104649.477
C10 DRIFTWOOD	1468.77	2371.54	308202.007	104649.477
C11 CDOOT-1	1468.75	2371.54	308202.007	104649.477
C12 WHEELER	1468.54	2371.54	308202.007	104649.477
C13 UNIVERSITY 3 SPOT	1468.32	2371.54	308202.007	104649.477
C14 GARDEN CITY	1468.90	2371.54	308202.007	104649.477
C15 UNIVERSITY SQUARE	1468.74	2371.54	308202.007	104649.477
C16 CDOOT-2	1468.93	2371.54	308202.007	104649.477
C17 VOLK Target	1468.37	2371.54	308202.007	104649.477
C18 Union Pacific Target	1468.91	2371.54	308202.007	104649.477
C19 Countryside Center Target	1468.41	2371.54	308202.007	104649.477
C20 Parkview Target	1468.23	2371.54	308202.007	104649.477
C21 University 5 Spot Target	1468.78	2371.54	308202.007	104649.477
C22 Garden City Target	1468.90	2371.54	308202.007	104649.477
C23 University Square Target	1468.74	2371.54	308202.007	104649.477
C24 Ehrlich Motors Target	1468.93	2371.54	308202.007	104649.477
C25 CDOOT-1 Target	1468.75	2371.54	308202.007	104649.477
C26 CDOOT-2 Target	1468.92	2371.54	308202.007	104649.477
C27 Motorama Target	1468.32	2371.54	308202.007	104649.477
C28 Tri-Point Target	1468.90	2371.54	308202.007	104649.477
C29 Sunnyview Target	1468.74	2371.54	308202.007	104649.477
C30 Sleep Inn Target	1468.93	2371.54	308202.007	104649.477
C31 Suzlin Target	1468.77	2371.54	308202.007	104649.477
C32 Teleg. Raiser Target	1468.32	2371.54	308202.007	104649.477
C33 Wintersetz Target	1468.90	2371.54	308202.007	104649.477
C34 Noble Target	1468.37	2371.54	308202.007	104649.477
C35 Millers Greenhouse Target	1468.91	2371.54	308202.007	104649.477
C36 Riverview Target	1468.54	2371.54	308202.007	104649.477
A7 Hwy 85-1 Target	1467.98	2380.73	308205.848	104643.324
A8 HWY 34-2 Target	333.78	2375.18	308205.848	104643.324



Rig on E8 WINTERSETZ (RT) is Mud line (Facility - SEC.20-T5N-R65W)
 Mean Sea Level to Mud line (Facility - SEC.20-T5N-R65W)
 Rig on E8 WINTERSETZ (RT) is Mean Sea Level

BGS Global Geomagnetic Model [1945.0-2007.0] Dip: 67.22° Field: 53777.6 nT
 Magnetic North is 9.58 degrees East of True North (at 09/29/05)
 To correct azimuth from Magnetic to True add 9.58 degrees



RECEIVED

NOV 26 07

COGCC

Project Name	ES Sheep Inn
Client	MINERAL RESOURCES, INC.
Location	WELD COUNTY, COLORADO
Map Scale	1" = 100'
Map Date	10/20/07
Map Author	ENTEQ
Map Checker	ENTEQ
Map Title	ES Sheep Inn

MINERAL RESOURCES, INC.
Location: COLORADO
State: WELD COUNTY
Facility: SEC. 20-T0N40SW

ENTEQ
Baker Hughes

