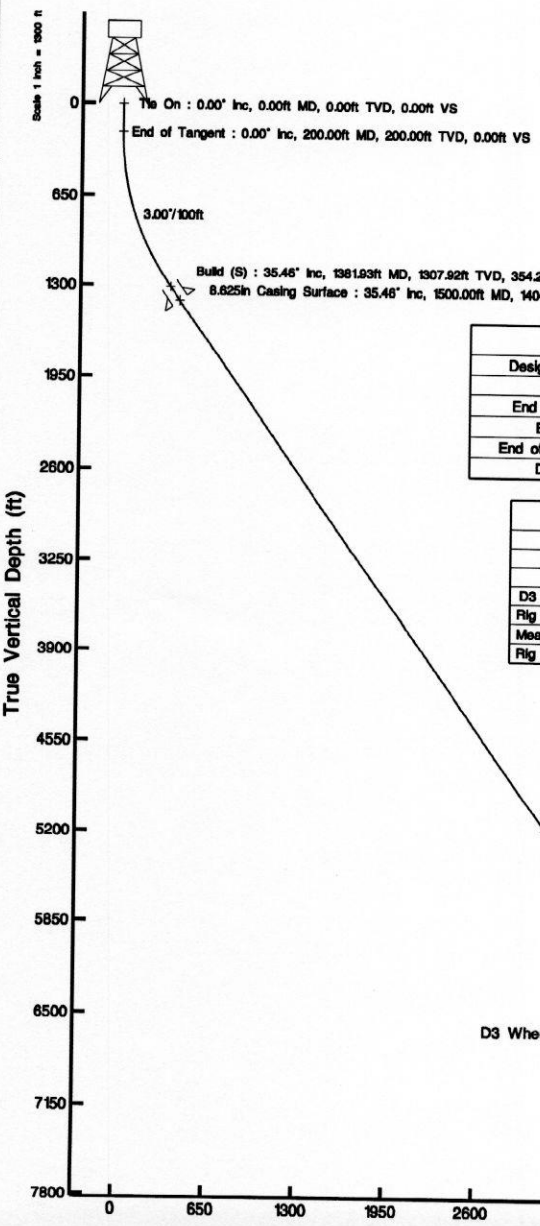
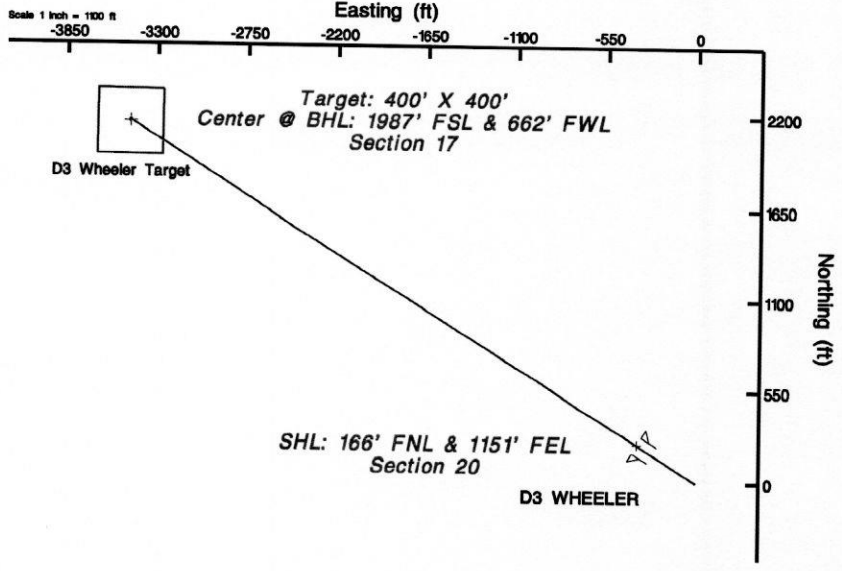


MINERAL RESOURCES, INC.

Location: COLORADO
Field: WELD COUNTY
Facility: SEC.20-T5N-R65W

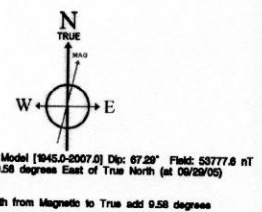
Slot: D3 WHEELER
Well: D3 Wheeler
Wellbore: D3 Wheeler PWB



Well Profile Data								
Design Comment	MD (ft)	Inc (")	Az (°)	TVD (ft)	Local N (ft)	Local E (ft)	DLS ("/100ft)	VS (ft)
Tie On	0.00	0.000	301.840	0.00	0.00	0.00	0.00	0.00
End of Tangent	200.00	0.000	301.840	200.00	0.00	0.00	0.00	0.00
Build (S)	1381.93	35.458	301.840	1307.92	166.86	-300.90	3.00	354.20
End of Tangent (S)	6124.79	35.458	301.840	5171.17	1638.34	-2638.24	0.00	3105.56
Drop (S)	8670.59	10.000	301.840	7500.00	2153.00	-3467.00	1.00	4081.11

Location Information					
Facility Name		Grid East (USft)	Grid North (USft)	Latitude	Longitude
SEC.20-T5N-R65W		3225988.330	1384979.750	40° 23' 14.400"N	104° 47' 19.400"W
Slot	Local N (ft)	Local E (ft)	Grid East (USft)	Grid North (USft)	Latitude
D3 WHEELER	1478.54	1883.82	3227858.265	1386475.395	40° 23' 29.010"N
Rig on D3 WHEELER (RT) to Mud line (Facility - SEC.20-T5N-R65W)				0ft	
Mean Sea Level to Mud line (Facility - SEC.20-T5N-R65W)				0ft	
Rig on D3 WHEELER (RT) to Mean Sea Level				0ft	

Plot reference wellpath in D3 Wheeler PWB	
True vertical depths are referenced to Rig on D3 WHEELER (RT)	Grid System: NAD83 / Lambert Colorado State Plane, Northern Zone (60'), US feet
Measured depths are referenced to Rig on D3 WHEELER (RT)	North Reference: True north
Rig on D3 WHEELER (RT) to Mean Sea Level: 0 feet	Scale: True distance
Mean Sea Level to Mud line (Facility - SEC.20-T5N-R65W): 0 feet	Depths are in feet
Coordinates are in feet referenced to Slot	Created by: mironovs on 6/8/2006



Vertical Section (ft)
Azimuth 301.84° with reference 0.00 N, 0.00 E from wellhead

Planned Wellpath Report

Wellpath: D3 Wheeler PWP

Page 1 of 4



INTEQ

REFERENCE WELLPATH IDENTIFICATION			
Operator	MINERAL RESOURCES, INC.	Slot	D3 WHEELER
Area	COLORADO	Well	D3 Wheeler
Field	WELD COUNTY	Wellbore	D3 Wheeler PWB
Facility	SEC.20-T5N-R65W		

REPORT SETUP INFORMATION			
Projection System	NAD83 / Lambert Colorado State Planes, Northern Zone (501), US feet	Software System	WellArchitect™
North Reference	True	User	L. Doubek
Scale	0.99996	Report Generated	06/16/06 at 12:49:
Wellbore last revised	06/01/06	Database/Source file	WA_Denver/D3

WELLPATH LOCATION						
	Local coordinates		Grid coordinates		Geographic coordinates	
	North [feet]	East [feet]	Easting [US feet]	Northing [US feet]	Latitude [°]	Longitude [°]
Slot Location	1478.54	1883.62	3227858.27	1386475.40	40 23 29.010N	104 40 55.057W
Facility Reference Pt			3225988.33	1384979.75	40 23 14.400N	104 41 19.400W
Field Reference Pt			3225988.33	1384979.75	40 23 14.400N	104 41 19.400W

WELLPATH DATUM			
Calculation method	Minimum curvature	Rig on D3 WHEELER (RT) to Installation Vertical Datum	0.00 feet
Horizontal Reference Pt	Slot	Rig on D3 WHEELER (RT) to Mean Sea Level	0.00 feet
Vertical Reference Pt	Rig on D3 WHEELER (RT)	Installation Vertical Datum to Mud Line	0.00 feet
MD Reference Pt	Rig on D3 WHEELER (RT)	Section Origin	N 0.00, E 0.00 ft
Field Vertical Reference	Mean Sea Level	Section Azimuth	301.84°

Planned Wellpath Report

Wellpath: D3 Wheeler PWP
Page 2 of 4



REFERENCE WELLPATH IDENTIFICATION			
Operator	MINERAL RESOURCES, INC.	Slot	D3 WHEELER
Area	COLORADO	Well	D3 Wheeler
Field	WELD COUNTY	Wellbore	D3 Wheeler PWB
Facility	SEC.20-T5N-R65W		

WELLPATH DATA (90 stations) † = interpolated/extrapolated station							
MD [feet]	Inclination [°]	Azimuth [°]	TVD [feet]	Vert Sect [feet]	North [feet]	East [feet]	DLS [°/100ft]
0.00	0.000	301.840	0.00	0.00	0.00	0.00	0.00
100.00†	0.000	0.000	100.00	0.00	0.00	0.00	0.00
200.00	0.000	301.840	200.00	0.00	0.00	0.00	0.00
300.00†	3.000	301.840	299.95	2.62	1.38	-2.22	3.00
400.00†	6.000	301.840	399.63	10.46	5.52	-8.89	3.00
500.00†	9.000	301.840	498.77	23.51	12.40	-19.98	3.00
600.00†	12.000	301.840	597.08	41.74	22.02	-35.45	3.00
700.00†	15.000	301.840	694.31	65.08	34.33	-55.28	3.00
800.00†	18.000	301.840	790.18	93.48	49.31	-79.41	3.00
900.00†	21.000	301.840	884.43	126.85	66.92	-107.76	3.00
1000.00†	24.000	301.840	976.81	165.12	87.11	-140.27	3.00
1100.00†	27.000	301.840	1067.06	208.16	109.82	-176.84	3.00
1200.00†	30.000	301.840	1154.93	255.87	134.99	-217.37	3.00
1300.00†	33.000	301.840	1240.18	308.12	162.55	-261.75	3.00
1381.93	35.458	301.840	1307.92	354.20	186.86	-300.90	3.00
1400.00†	35.458	301.840	1322.64	364.68	192.39	-309.81	0.00
1500.00†	35.458	301.840	1404.09	422.69	222.99	-359.09	0.00
1600.00†	35.458	301.840	1485.55	480.70	253.60	-408.37	0.00
1700.00†	35.458	301.840	1567.00	538.71	284.20	-457.65	0.00
1800.00†	35.458	301.840	1648.45	596.72	314.80	-506.93	0.00
1900.00†	35.458	301.840	1729.91	654.73	345.41	-556.21	0.00
2000.00†	35.458	301.840	1811.36	712.74	376.01	-605.49	0.00
2100.00†	35.458	301.840	1892.82	770.76	406.61	-654.77	0.00
2200.00†	35.458	301.840	1974.27	828.77	437.22	-704.06	0.00
2300.00†	35.458	301.840	2055.72	886.78	467.82	-753.34	0.00
2400.00†	35.458	301.840	2137.18	944.79	498.42	-802.62	0.00
2500.00†	35.458	301.840	2218.63	1002.80	529.03	-851.90	0.00
2600.00†	35.458	301.840	2300.09	1060.81	559.63	-901.18	0.00
2700.00†	35.458	301.840	2381.54	1118.82	590.24	-950.46	0.00
2800.00†	35.458	301.840	2462.99	1176.83	620.84	-999.74	0.00
2900.00†	35.458	301.840	2544.45	1234.84	651.44	-1049.03	0.00
3000.00†	35.458	301.840	2625.90	1292.85	682.05	-1098.31	0.00
3100.00†	35.458	301.840	2707.36	1350.86	712.65	-1147.59	0.00
3200.00†	35.458	301.840	2788.81	1408.87	743.25	-1196.87	0.00
3300.00†	35.458	301.840	2870.26	1466.88	773.86	-1246.15	0.00
3400.00†	35.458	301.840	2951.72	1524.89	804.46	-1295.43	0.00
3500.00†	35.458	301.840	3033.17	1582.90	835.06	-1344.71	0.00
3600.00†	35.458	301.840	3114.63	1640.91	865.67	-1393.99	0.00
3700.00†	35.458	301.840	3196.08	1698.93	896.27	-1443.28	0.00
3800.00†	35.458	301.840	3277.54	1756.94	926.87	-1492.56	0.00

Planned Wellpath Report

Wellpath: D3 Wheeler PWP

Page 3 of 4



INTEQ

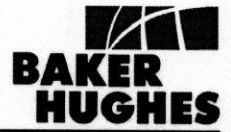
REFERENCE WELLPATH IDENTIFICATION			
Operator	MINERAL RESOURCES, INC.	Slot	D3 WHEELER
Area	COLORADO	Well	D3 Wheeler
Field	WELD COUNTY	Wellbore	D3 Wheeler PWB
Facility	SEC.20-T5N-R65W		

WELLPATH DATA (90 stations) † = interpolated/extrapolated station							
MD [feet]	Inclination [°]	Azimuth [°]	TVD [feet]	Vert Sect [feet]	North [feet]	East [feet]	DLS [°/100ft]
3900.00†	35.458	301.840	3358.99	1814.95	957.48	-1541.84	0.00
4000.00†	35.458	301.840	3440.44	1872.96	988.08	-1591.12	0.00
4100.00†	35.458	301.840	3521.90	1930.97	1018.69	-1640.40	0.00
4200.00†	35.458	301.840	3603.35	1988.98	1049.29	-1689.68	0.00
4300.00†	35.458	301.840	3684.81	2046.99	1079.89	-1738.96	0.00
4400.00†	35.458	301.840	3766.26	2105.00	1110.50	-1788.25	0.00
4500.00†	35.458	301.840	3847.71	2163.01	1141.10	-1837.53	0.00
4600.00†	35.458	301.840	3929.17	2221.02	1171.70	-1886.81	0.00
4700.00†	35.458	301.840	4010.62	2279.03	1202.31	-1936.09	0.00
4800.00†	35.458	301.840	4092.08	2337.04	1232.91	-1985.37	0.00
4900.00†	35.458	301.840	4173.53	2395.05	1263.51	-2034.65	0.00
5000.00†	35.458	301.840	4254.98	2453.06	1294.12	-2083.93	0.00
5100.00†	35.458	301.840	4336.44	2511.07	1324.72	-2133.21	0.00
5200.00†	35.458	301.840	4417.89	2569.08	1355.33	-2182.50	0.00
5300.00†	35.458	301.840	4499.35	2627.09	1385.93	-2231.78	0.00
5400.00†	35.458	301.840	4580.80	2685.11	1416.53	-2281.06	0.00
5500.00†	35.458	301.840	4662.25	2743.12	1447.14	-2330.34	0.00
5600.00†	35.458	301.840	4743.71	2801.13	1477.74	-2379.62	0.00
5700.00†	35.458	301.840	4825.16	2859.14	1508.34	-2428.90	0.00
5800.00†	35.458	301.840	4906.62	2917.15	1538.95	-2478.18	0.00
5900.00†	35.458	301.840	4988.07	2975.16	1569.55	-2527.47	0.00
6000.00†	35.458	301.840	5069.53	3033.17	1600.15	-2576.75	0.00
6100.00†	35.458	301.840	5150.98	3091.18	1630.76	-2626.03	0.00
6124.79	35.458	301.840	5171.17	3105.56	1638.34	-2638.24	0.00
6200.00†	34.706	301.840	5232.72	3148.79	1661.15	-2674.97	1.00
6300.00†	33.706	301.840	5315.42	3205.00	1690.81	-2722.72	1.00
6400.00†	32.706	301.840	5399.09	3259.77	1719.70	-2769.25	1.00
6500.00†	31.706	301.840	5483.70	3313.06	1747.81	-2814.52	1.00
6600.00†	30.706	301.840	5569.23	3364.87	1775.15	-2858.54	1.00
6700.00†	29.706	301.840	5655.65	3415.18	1801.69	-2901.28	1.00
6800.00†	28.706	301.840	5742.94	3463.98	1827.43	-2942.73	1.00
6900.00†	27.706	301.840	5831.06	3511.24	1852.36	-2982.88	1.00
7000.00†	26.706	301.840	5920.00	3556.96	1876.48	-3021.72	1.00
7100.00†	25.706	301.840	6009.72	3601.12	1899.78	-3059.23	1.00
7200.00†	24.706	301.840	6100.20	3643.71	1922.24	-3095.41	1.00
7300.00†	23.706	301.840	6191.40	3684.71	1943.87	-3130.24	1.00
7400.00†	22.706	301.840	6283.31	3724.11	1964.66	-3163.72	1.00
7500.00†	21.706	301.840	6375.89	3761.90	1984.60	-3195.82	1.00
7600.00†	20.706	301.840	6469.12	3798.07	2003.68	-3226.55	1.00
7700.00†	19.706	301.840	6562.97	3832.61	2021.90	-3255.89	1.00

Planned Wellpath Report

Wellpath: D3 Wheeler PWP

Page 4 of 4



INTEQ

REFERENCE WELLPATH IDENTIFICATION			
Operator	MINERAL RESOURCES, INC.	Slot	D3 WHEELER
Area	COLORADO	Well	D3 Wheeler
Field	WELD COUNTY	Wellbore	D3 Wheeler PWB
Facility	SEC.20-T5N-R65W		

WELLPATH DATA (90 stations) † = interpolated/extrapolated station							
MD [feet]	Inclination [°]	Azimuth [°]	TVD [feet]	Vert Sect [feet]	North [feet]	East [feet]	DLS [°/100ft]
7800.00†	18.706	301.840	6657.40	3865.51	2039.26	-3283.84	1.00
7900.00†	17.706	301.840	6752.39	3896.75	2055.74	-3310.38	1.00
8000.00†	16.706	301.840	6847.92	3926.33	2071.34	-3335.51	1.00
8100.00†	15.706	301.840	6943.94	3954.24	2086.07	-3359.22	1.00
8200.00†	14.706	301.840	7040.44	3980.47	2099.90	-3381.50	1.00
8300.00†	13.706	301.840	7137.38	4005.01	2112.85	-3402.35	1.00
8400.00†	12.706	301.840	7234.73	4027.85	2124.90	-3421.75	1.00
8500.00†	11.706	301.840	7332.47	4049.00	2136.06	-3439.71	1.00
8600.00†	10.706	301.840	7430.56	4068.43	2146.31	-3456.22	1.00
8670.59	10.000	301.840	7500.00 ¹	4081.11	2153.00	-3467.00	1.00

HOLE & CASING SECTIONS Ref Wellbore: D3 Wheeler PWB Ref Wellpath: D3 Wheeler PWP									
String/Diameter	Start MD [feet]	End MD [feet]	Interval [feet]	Start TVD [feet]	End TVD [feet]	Start N/S [feet]	Start E/W [feet]	End N/S [feet]	End E/W [feet]
12.25in Open Hole	0.00	1500.00	1500.00	0.00	1404.09	0.00	0.00	222.99	-359.09
8.625in Casing Surface	0.00	1500.00	1500.00	0.00	1404.09	0.00	0.00	222.99	-359.09
7.875in Open Hole	1500.00	8670.59	7170.59	1404.09	7500.00	222.99	-359.09	2153.00	-3467.00

TARGETS									
Name	MD [feet]	TVD [feet]	North [feet]	East [feet]	Grid East [us survey feet]	Grid North [us survey feet]	Latitude [°]	Longitude [°]	Shape
1) D3 Wheeler Target		6500.00	2153.00	-3467.00	3224371.70	1388596.23	40 23 50.282N	104 41 39.867W	square