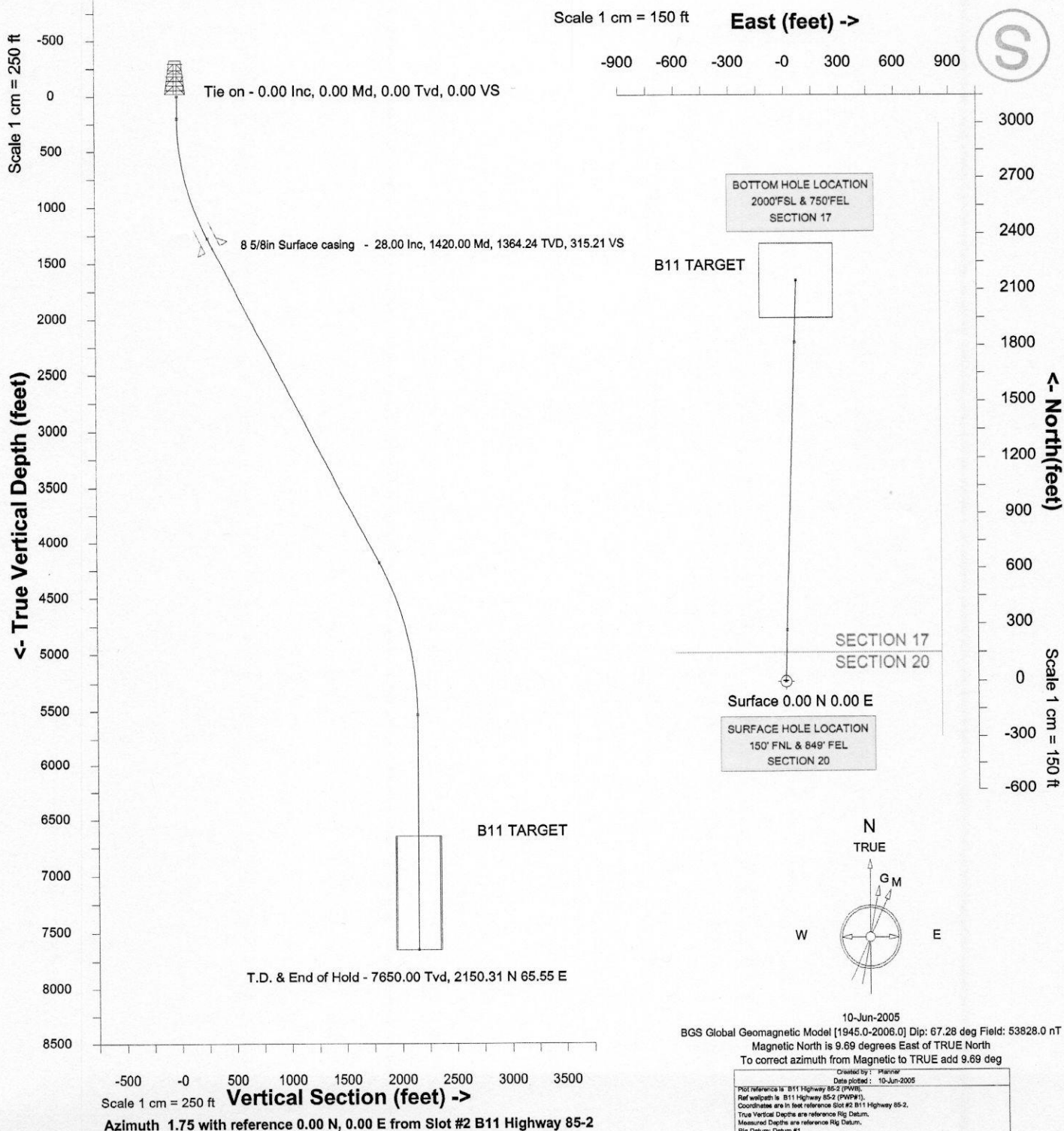


INTEO

Location:	COLORADO	Slot:	Slot #2 B11 Highway 85-2
Field:	WELD COUNTY	Well:	B11 Highway 85-2
Installation:	SEC.20-T5N-R65W	Wellbore:	B11 Highway 85-2 (PWB)

INTEQ

Point	MD	Inc	Azi	TVD	North	East	deg/100ft	V. Sect
Tie on	0.00	0.00	0.00	0.00	0.00	0.00	0.00	0.00
KOP	200.00	0.00	1.75	200.00	0.00	0.00	0.00	0.00
End of Build	1320.00	28.00	1.75	1275.95	268.14	8.17	2.50	268.26
End of Hold	4616.72	28.00	1.75	4186.78	1815.14	55.33	0.00	1815.98
Target	6016.72	0.00	1.75	5531.72	2150.31	65.55	2.00	2151.31
T.D. & End of Hold	8135.00	0.00	1.75	7650.00	2150.31	65.55	0.00	2151.31



MINERAL RESOURCES, INC., Slot #1 B12
 Highway 85-1
 SEC.20-T5N-R65W,
 WELD COUNTY, COLORADO

PROPOSAL LISTING Page 1
 Wellbore: B12 Highway 85-1 (PWB)
 Wellpath: B12 Highway 85-1 (PWP#1)
 Date Printed: 10-Jun-2005



INTEQ

Wellbore

Name	Created	Last Revised
B12 Highway 85-1 (PWB)	17-May-2005	10-Jun-2005

Well

Name	Government ID	Last Revised
B12 Highway 85-1		17-May-2005

Slot

Name	Grid Northing	Grid Easting	Latitude	Longitude	North	East
Slot #1 B12 Highway 85-1	1387486.1535	3227781.3948	N40 23 39.0047	W104 40 55.9296	2490.00N	1816.00E

Installation

Name	Easting	Northing	Coord System Name	North Alignment
SEC.20-T5N-R65W	3225988.3272	1384979.7496	CO83-NF on NORTH AMERICAN DATUM 1983 datum	True

Field

Name	Easting	Northing	Coord System Name	North Alignment
WELD COUNTY	3225988.3272	1384979.7496	CO83-NF on NORTH AMERICAN DATUM 1983 datum	True

Created By

--

Comments

--

All data is in Feet unless otherwise stated
 Coordinates are from Slot MD's are from Rig and TVD's are from Rig (Datum #1 4669.0ft above Mean Sea Level)
 Vertical Section is from 0.00N 0.00E on azimuth 17.94 degrees
 Bottom hole distance is 852.64 Feet on azimuth 17.94 degrees from Wellhead
 Calculation method uses Minimum Curvature method
 Prepared by Baker Hughes INTEQ

MINERAL RESOURCES, INC., Slot #1 B12
Highway 85-1
SEC.20-T5N-R65W,
WELD COUNTY, COLORADO

PROPOSAL LISTING Page 2
Wellbore: B12 Highway 85-1 (PWB)
Wellpath: B12 Highway 85-1 (PWP#1)
Date Printed: 10-Jun-2005



INTEQ

Wellpath Report

MD[ft]	Inc[deg]	Azi[deg]	TVD[ft]	North[ft]	East[ft]	Dogleg [deg/100ft]	Vertical Section[ft]
0.00	0.00	0.00	0.00	0.00N	0.00E	0.00	0.00
100.00	0.00	0.00	100.00	0.00N	0.00E	0.00	0.00
200.00	0.00	0.00	200.00	0.00N	0.00E	0.00	0.00
300.00	0.00	0.00	300.00	0.00N	0.00E	0.00	0.00
400.00	0.00	0.00	400.00	0.00N	0.00E	0.00	0.00
500.00	0.00	0.00	500.00	0.00N	0.00E	0.00	0.00
600.00	0.00	0.00	600.00	0.00N	0.00E	0.00	0.00
700.00	0.00	0.00	700.00	0.00N	0.00E	0.00	0.00
800.00	0.00	0.00	800.00	0.00N	0.00E	0.00	0.00
900.00	0.00	0.00	900.00	0.00N	0.00E	0.00	0.00
1000.00	0.00	0.00	1000.00	0.00N	0.00E	0.00	0.00
1100.00	0.00	0.00	1100.00	0.00N	0.00E	0.00	0.00
1200.00	0.00	0.00	1200.00	0.00N	0.00E	0.00	0.00
1300.00	0.00	0.00	1300.00	0.00N	0.00E	0.00	0.00
1400.00	0.00	0.00	1400.00	0.00N	0.00E	0.00	0.00
1500.00	0.00	0.00	1500.00	0.00N	0.00E	0.00	0.00
1600.00	0.00	0.00	1600.00	0.00N	0.00E	0.00	0.00
1700.00	0.00	0.00	1700.00	0.00N	0.00E	0.00	0.00
1800.00	0.00	0.00	1800.00	0.00N	0.00E	0.00	0.00
1900.00	0.00	0.00	1900.00	0.00N	0.00E	0.00	0.00
2000.00	0.00	17.94	2000.00	0.00N	0.00E	0.00	0.00
2100.00	2.00	17.94	2099.98	1.66N	0.54E	2.00	1.75
2200.00	4.00	17.94	2199.84	6.64N	2.15E	2.00	6.98
2300.00	6.00	17.94	2299.45	14.93N	4.83E	2.00	15.69
2400.00	8.00	17.94	2398.70	26.52N	8.59E	2.00	27.88
2500.00	10.00	17.94	2497.47	41.41N	13.41E	2.00	43.52
2600.00	12.00	17.94	2595.62	59.56N	19.28E	2.00	62.60
2700.00	14.00	17.94	2693.05	80.96N	26.21E	2.00	85.10
2762.50	15.25	17.94	2753.53	95.97N	31.07E	2.00	100.88
2800.00	15.25	17.94	2789.71	105.36N	34.11E	0.00	110.74
2900.00	15.25	17.94	2886.19	130.38N	42.22E	0.00	137.04
3000.00	15.25	17.94	2982.67	155.40N	50.32E	0.00	163.35
3100.00	15.25	17.94	3079.15	180.43N	58.42E	0.00	189.65
3200.00	15.25	17.94	3175.62	205.45N	66.52E	0.00	215.95
3300.00	15.25	17.94	3272.10	230.48N	74.62E	0.00	242.26
3400.00	15.25	17.94	3368.58	255.50N	82.73E	0.00	268.56
3500.00	15.25	17.94	3465.06	280.52N	90.83E	0.00	294.86
3600.00	15.25	17.94	3561.54	305.55N	98.93E	0.00	321.17
3700.00	15.25	17.94	3658.02	330.57N	107.03E	0.00	347.47
3800.00	15.25	17.94	3754.50	355.60N	115.14E	0.00	373.77
3900.00	15.25	17.94	3850.97	380.62N	123.24E	0.00	400.07
4000.00	15.25	17.94	3947.45	405.64N	131.34E	0.00	426.38
4100.00	15.25	17.94	4043.93	430.67N	139.44E	0.00	452.68
4200.00	15.25	17.94	4140.41	455.69N	147.54E	0.00	478.98
4300.00	15.25	17.94	4236.89	480.72N	155.65E	0.00	505.29
4400.00	15.25	17.94	4333.37	505.74N	163.75E	0.00	531.59
4500.00	15.25	17.94	4429.85	530.77N	171.85E	0.00	557.89
4600.00	15.25	17.94	4526.33	555.79N	179.95E	0.00	584.20
4700.00	15.25	17.94	4622.80	580.81N	188.06E	0.00	610.50
4800.00	15.25	17.94	4719.28	605.84N	196.16E	0.00	636.80
4900.00	15.25	17.94	4815.76	630.86N	204.26E	0.00	663.11
5000.00	15.25	17.94	4912.24	655.89N	212.36E	0.00	689.41

All data is in Feet unless otherwise stated

Coordinates are from Slot MD's are from Rig and TVD's are from Rig (Datum #1 4669.0ft above Mean Sea Level)

Vertical Section is from 0.00N 0.00E on azimuth 17.94 degrees

Bottom hole distance is 852.64 Feet on azimuth 17.94 degrees from Wellhead

Calculation method uses Minimum Curvature method

Prepared by Baker Hughes INTEQ

MINERAL RESOURCES, INC., Slot #1 B12
Highway 85-1
SEC.20-T5N-R65W,
WELD COUNTY, COLORADO

PROPOSAL LISTING Page 3
Wellbore: B12 Highway 85-1 (PWB)
Wellpath: B12 Highway 85-1 (PWP#1)
Date Printed: 10-Jun-2005



INTEQ

Wellpath Report

MD[ft]	Inc[deg]	Azi[deg]	TVD[ft]	North[ft]	East[ft]	Dogleg [deg/100ft]	Vertical Section[ft]
5100.00	15.25	17.94	5008.72	680.91N	220.47E	0.00	715.71
5200.00	15.25	17.94	5105.20	705.93N	228.57E	0.00	742.02
5237.06	15.25	17.94	5140.95	715.21N	231.57E	0.00	751.76
5337.06	13.25	17.94	5237.87	738.63N	239.15E	2.00	776.38
5437.06	11.25	17.94	5335.59	758.81N	245.69E	2.00	797.59
5537.06	9.25	17.94	5433.99	775.74N	251.17E	2.00	815.39
5637.06	7.25	17.94	5532.95	789.39N	255.59E	2.00	829.74
5737.06	5.25	17.94	5632.35	799.75N	258.94E	2.00	840.62
5837.06	3.25	17.94	5732.07	806.80N	261.23E	2.00	848.03
5937.06	1.25	17.94	5831.99	810.53N	262.44E	2.00	851.96
5999.56	0.00	17.94	5894.48	811.18N	262.64E	2.00	852.64
6000.00	0.00	17.94	5894.92	811.18N	262.64E	0.00	852.64
6100.00	0.00	17.94	5994.92	811.18N	262.64E	0.00	852.64
6200.00	0.00	17.94	6094.92	811.18N	262.64E	0.00	852.64
6300.00	0.00	17.94	6194.92	811.18N	262.64E	0.00	852.64
6400.00	0.00	17.94	6294.92	811.18N	262.64E	0.00	852.64
6500.00	0.00	17.94	6394.92	811.18N	262.64E	0.00	852.64
6600.00	0.00	17.94	6494.92	811.18N	262.64E	0.00	852.64
6700.00	0.00	17.94	6594.92	811.18N	262.64E	0.00	852.64
6800.00	0.00	17.94	6694.92	811.18N	262.64E	0.00	852.64
6900.00	0.00	17.94	6794.92	811.18N	262.64E	0.00	852.64
7000.00	0.00	17.94	6894.92	811.18N	262.64E	0.00	852.64
7100.00	0.00	17.94	6994.92	811.18N	262.64E	0.00	852.64
7200.00	0.00	17.94	7094.92	811.18N	262.64E	0.00	852.64
7300.00	0.00	17.94	7194.92	811.18N	262.64E	0.00	852.64
7400.00	0.00	17.94	7294.92	811.18N	262.64E	0.00	852.64
7500.00	0.00	17.94	7394.92	811.18N	262.64E	0.00	852.64
7600.00	0.00	17.94	7494.92	811.18N	262.64E	0.00	852.64
7700.00	0.00	17.94	7594.92	811.18N	262.64E	0.00	852.64
7800.00	0.00	17.94	7694.92	811.18N	262.64E	0.00	852.64
7900.00	0.00	17.94	7794.92	811.18N	262.64E	0.00	852.64
7955.08	0.00	17.94	7850.00	811.18N	262.64E	0.00	852.64

All data is in Feet unless otherwise stated

Coordinates are from Slot MD's are from Rig and TVD's are from Rig (Datum #1 4669.0ft above Mean Sea Level)

Vertical Section is from 0.00N 0.00E on azimuth 17.94 degrees

Bottom hole distance is 852.64 Feet on azimuth 17.94 degrees from Wellhead

Calculation method uses Minimum Curvature method

Prepared by Baker Hughes INTEQ

MINERAL RESOURCES, INC., Slot #1 B12
 Highway 85-1
 SEC.20-T5N-R65W,
 WELD COUNTY, COLORADO

PROPOSAL LISTING Page 4
 Wellbore: B12 Highway 85-1 (PWB)
 Wellpath: B12 Highway 85-1 (PWP#1)
 Date Printed: 10-Jun-2005



INTEQ

Casings

Name	Top MD[ft]	Top TVD[ft]	Top North[ft]	Top East[ft]	Shoe MD[ft]	Shoe TVD[ft]	Shoe North[ft]	Shoe East[ft]	Wellbore
8 5/8in Surface casing	0.00	0.00	0.00N	0.00E	450.00	450.00	0.00N	0.00E	B12 Highway 85-1 (PWB)

Targets

Name	North[ft]	East[ft]	TVD[ft]	Latitude	Longitude	Easting	Northing	Last Revised
B12 TARGET	811.18N	262.64E	6850.00	N40 23 47.0204	W104 40 52.5350	3228036.54	1388299.69	17-May-2005

All data is in Feet unless otherwise stated

Coordinates are from Slot MD's are from Rig and TVD's are from Rig (Datum #1 4669.0ft above Mean Sea Level)

Vertical Section is from 0.00N 0.00E on azimuth 17.94 degrees

Bottom hole distance is 852.64 Feet on azimuth 17.94 degrees from Wellhead

Calculation method uses Minimum Curvature method

Prepared by Baker Hughes INTEQ