



PIONEER

Pioneer Energy Services

**CEMENT BOND LOG
WITH GAMMA RAY**

Company **KERR-MCGEE OIL AND GAS ONSHORE LP**

Well **SAKATA STATE 24-36**

Field **WATTENBERG**

County **WELD** State **COLORADO**

Location: API #: 0512307880

Other Services

SE SW

SEC 36 TWP 1N RGE 67W

NONE

Permanent Datum GL Elevation 4959

Log Measured From GL -- Above Perm. Datum

Drilling Measured From KB K.B. -- Elevation
D.F. --
G.L. 4959

Comp. KERR-MCGEE OIL AND GAS
Well SAKATA STATE 24-36
Field WATTENBERG
Co. WELD
State COLORADO

Date of Service 04/27/2017

Run Number ONE

Depth Driller or PBTD --

Depth Logger 715

Bottom Log Interval 714

Top Log Interval SURFACE

Open Hole Size --

Type Fluid WATER

Fluid Level SURFACE

Fluid Density 8.33 PPG

Max. Recorded Temperature NOT RECORDED

Max. Wellhead Pressure 0

Wellhead Connection STANDARD PACK OFF

Estimated Cement Top 250

Unit Number P-38

Wireline Size 9/32

Location FORT MORGAN CO

Recorded By PHIL LOPEZ

Witnessed By SAMANTHA TRAN

Size

Wt/Ft

Top

Bottom

Tubing Record
Surface Casing
Production Casing
Liner Record

<<< Fold Here >>>

All interpretations are opinions based on inferences from electrical or other measurements and Pioneer Wireline Services, LLC cannot and does not guarantee the accuracy or correctness of any interpretation, and Pioneer Wireline Services, LLC will not be liable or responsible for any loss, costs, damages, or expenses incurred or sustained by anyone resulting from any interpretation made by any of our officers, agents or employees.

Comments

N/A DENOTES NOT AVAILABLE OR NON-APPLICABLE.
UPON COMPANY WOMAN REQUEST NO REPEAT OR FREE PIPE PASS

THANK YOU FOR USING PIONEER ENERGY SERVICES!

Your Pioneer Energy Services Crew

Engineer: PHIL LOPEZ
Operator: DEAN MARSHALL
Operator: ERIC ENGLE
Operator: CLARK SETTLE

Tool Data - Services

RBL-D
GAMMA RAY CCL

Serial Number

070132
070237

Top - Bottom

BHTEMP_Src TEMP	PPT usec 0	CASEWGHT lb/ft 11.6	MAXAMPL mV 0	MINAMPL mV 1	MINATTN db/ft 0.08	SRFTEMP degF 0	CASETHCK in 0
CASEOD in 4.5	PERFS 0	TDEPTH ft 0	BOTTEMP degF 100	BOREID in 7.875			

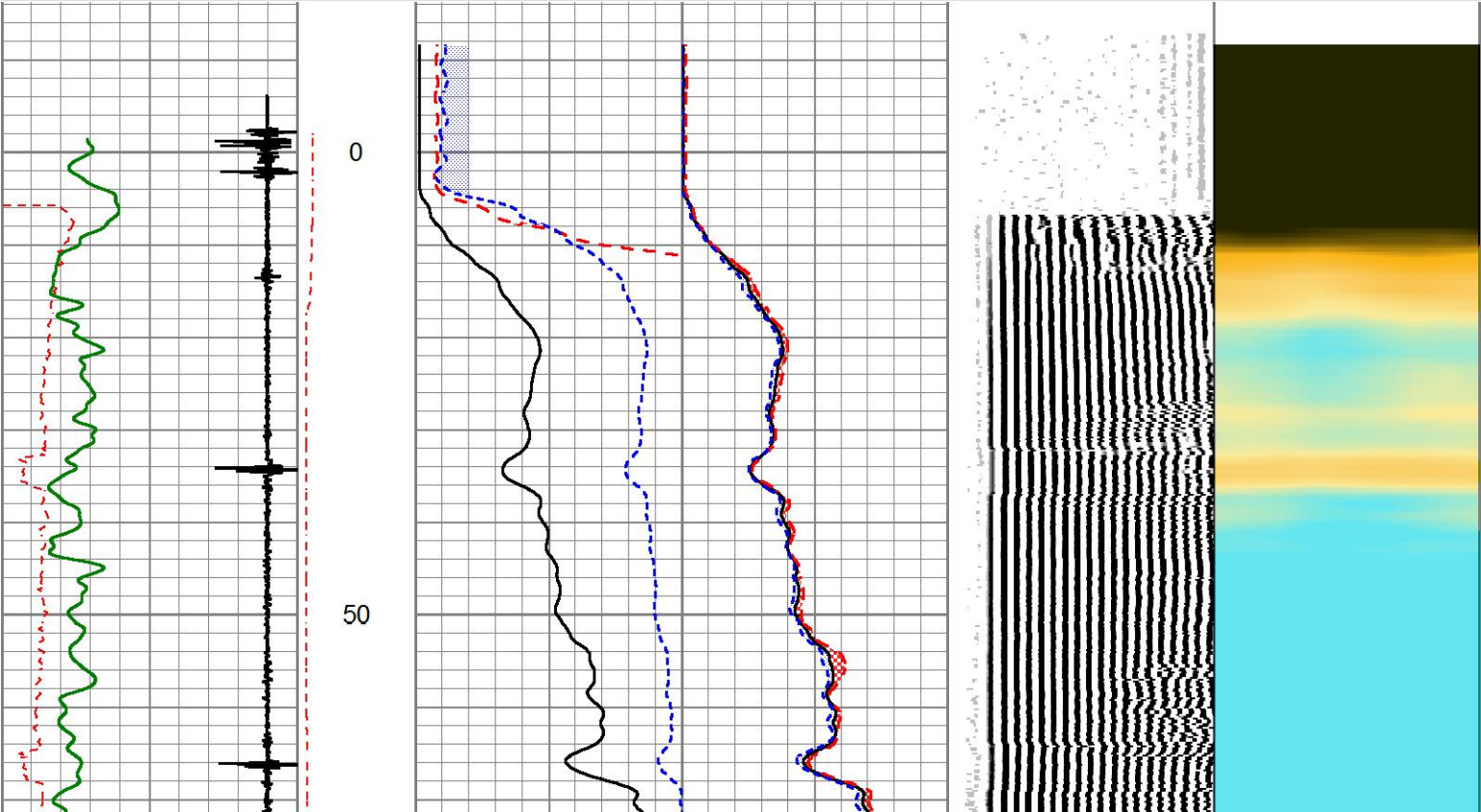


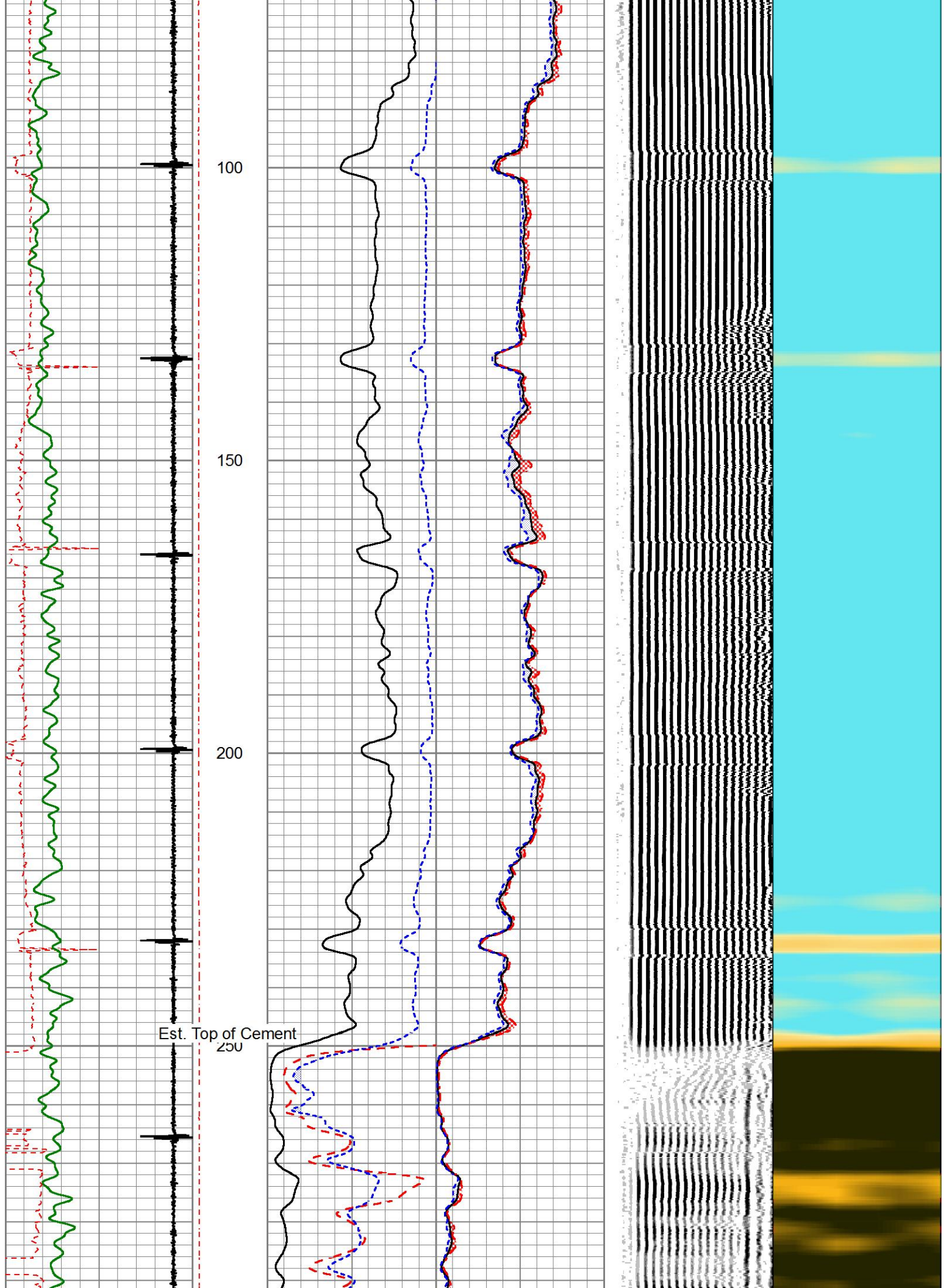
MAIN PASS

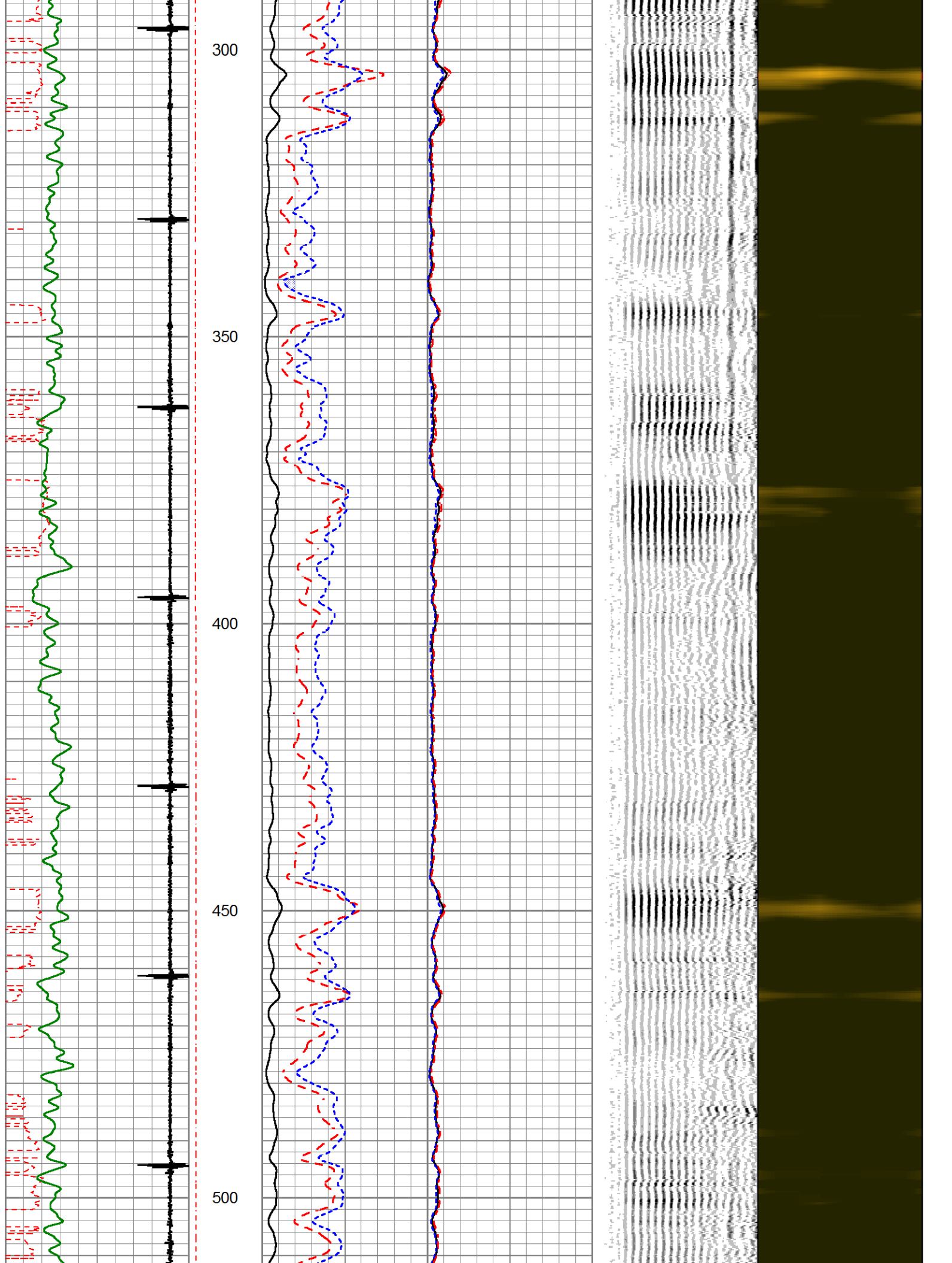
Database File
Dataset Pathname
Presentation Format
Dataset Creation
Charted by

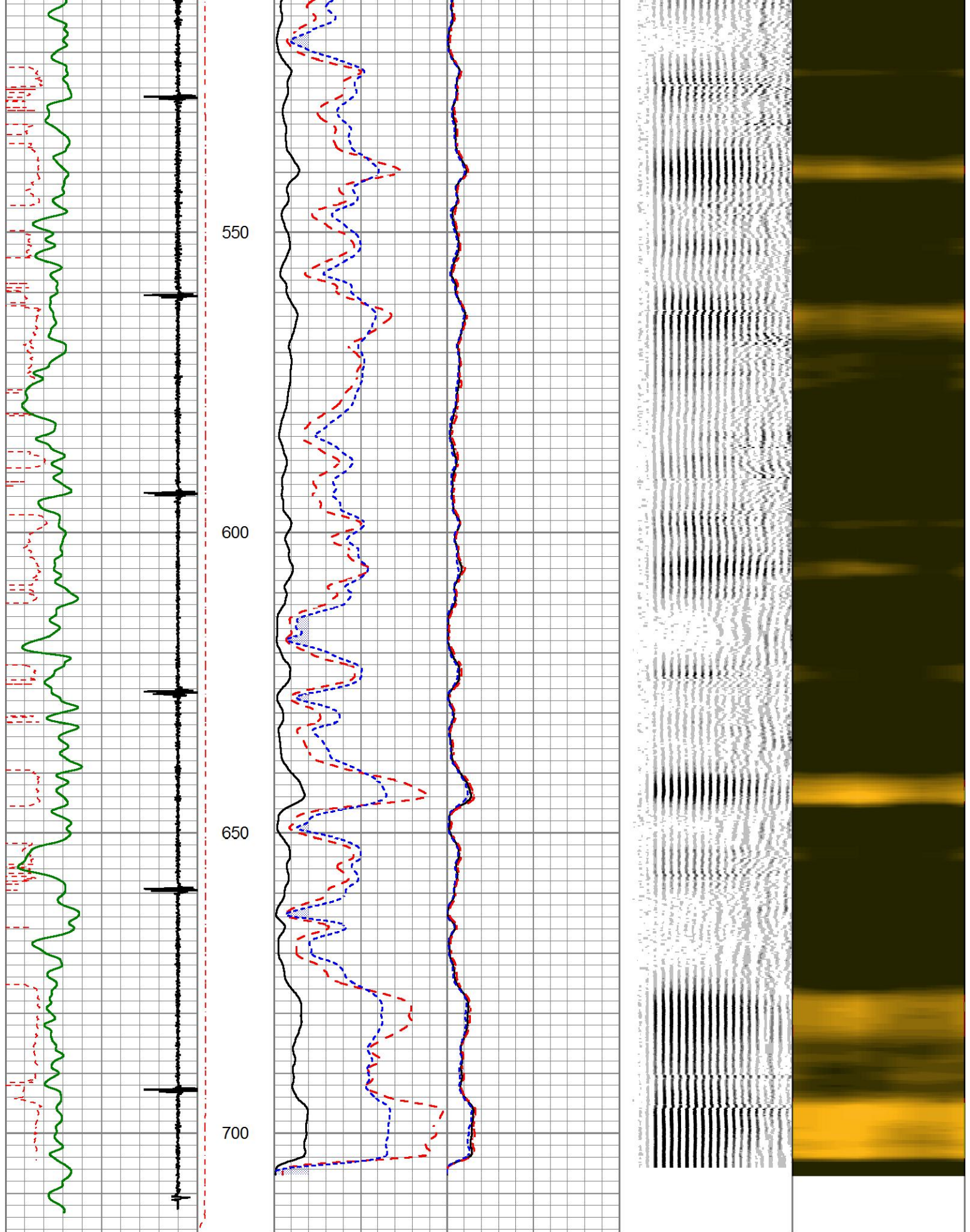
anadarko_ sakata state 24-36_0512307780_ scbl.db
pass3
pinr_ scbl
Thu Apr 27 12:03:42 2017
Depth in Feet scaled 1:240

3' Travel Time	Line Tension	3' Amplitude (mV)	Sector Amplitude Average	200	VDL	1200	1	Sector Map	8
350 (usec)	0 (12000)	0 100	0 150				10		60
-9 Collar Locator 1		3' Amplified Amplitude X 5	Sector Amplitude Maximum						
Gamma Ray		0 (mV) 20	0 150						
0 (GAPI) 150		1 Bond Index 0	Sector Amplitude Minimum						
			0 150						









3' Travel Time		Line Tension		3' Amplitude (mV)		Sector Amplitude Average		200	VDL	1200	1	Sector Map		8
350	(usec)	250	0 (12000)	0	100	0	150				10			60
				3' Amplified										

-9	Collar Locator	1	Amplitude X 5		Sector
Gamma Ray			0	(mV)	20
0	(GAPI)	150	1	Bond Index	0
					0
					150
					Sector
					Amplitude Minimum
					0
					150

Calibration Report	
Database File	anadarko_sakata state 24-36_0512307780_scbl.db
Dataset Pathname	pass3
Dataset Creation	Thu Apr 27 12:03:42 2017

Gamma Ray Calibration Report

Serial Number:	FW1212-24	
Tool Model:	275 Probe GR-CCL Corrosion	
Performed:	Fri Jan 20 11:55:28 2017	
Calibrator Value:	320.0	GAPI
Background Reading:	14.0	cps
Calibrator Reading:	1153.0	cps
Sensitivity:	0.7000	GAPI/cps

Segmented Cement Bond Log Calibration Report

Serial Number:	141166	
Tool Model:	275 Probe w Temp New Mod	
Calibration Casing Diameter:	5.500	in
Calibration Depth:	-3127.429	ft

Master Calibration, performed (Derived):

	Raw (v)		Calibrated (mv)		Results	
	Zero	Cal	Zero	Cal	Gain	Offset
3'	0.000	1.674	1.000	71.921	42.378	0.997
CAL	0.000	1.508				
5'	0.000	1.405	1.000	71.921	50.492	0.997
SUM						
S1	0.000	1.527	0.000	100.000	65.472	-0.005
S2	0.000	1.581	0.000	100.000	63.264	-0.005
S3	0.000	1.695	0.000	100.000	59.005	-0.005
S4	0.000	1.798	0.000	100.000	55.632	-0.004
S5	0.000	1.843	0.000	100.000	54.271	-0.004
S6	0.000	1.808	0.000	100.000	55.299	-0.004
S7	0.000	1.678	0.000	100.000	59.608	-0.004
S8	0.000	1.543	0.000	100.000	64.795	-0.004

Temperature Calibration Report

Serial Number:	141166		
Tool Model:	275 Probe w Temp New Mod		
Performed:	Thu Oct 27 08:20:08 2016		
	Reference		Reading
Low Reference:	35.00 degF		0.25 degF

High Reference: 210.00 degF 1.31 degF

Gain: 0.76

Offset: 6.00

Delta Spacing 1



Company KERR-MCGEE OIL AND GAS

Well SAKATA STATE 24-36

Field WATTENBERG

County WELD

State COLORADO