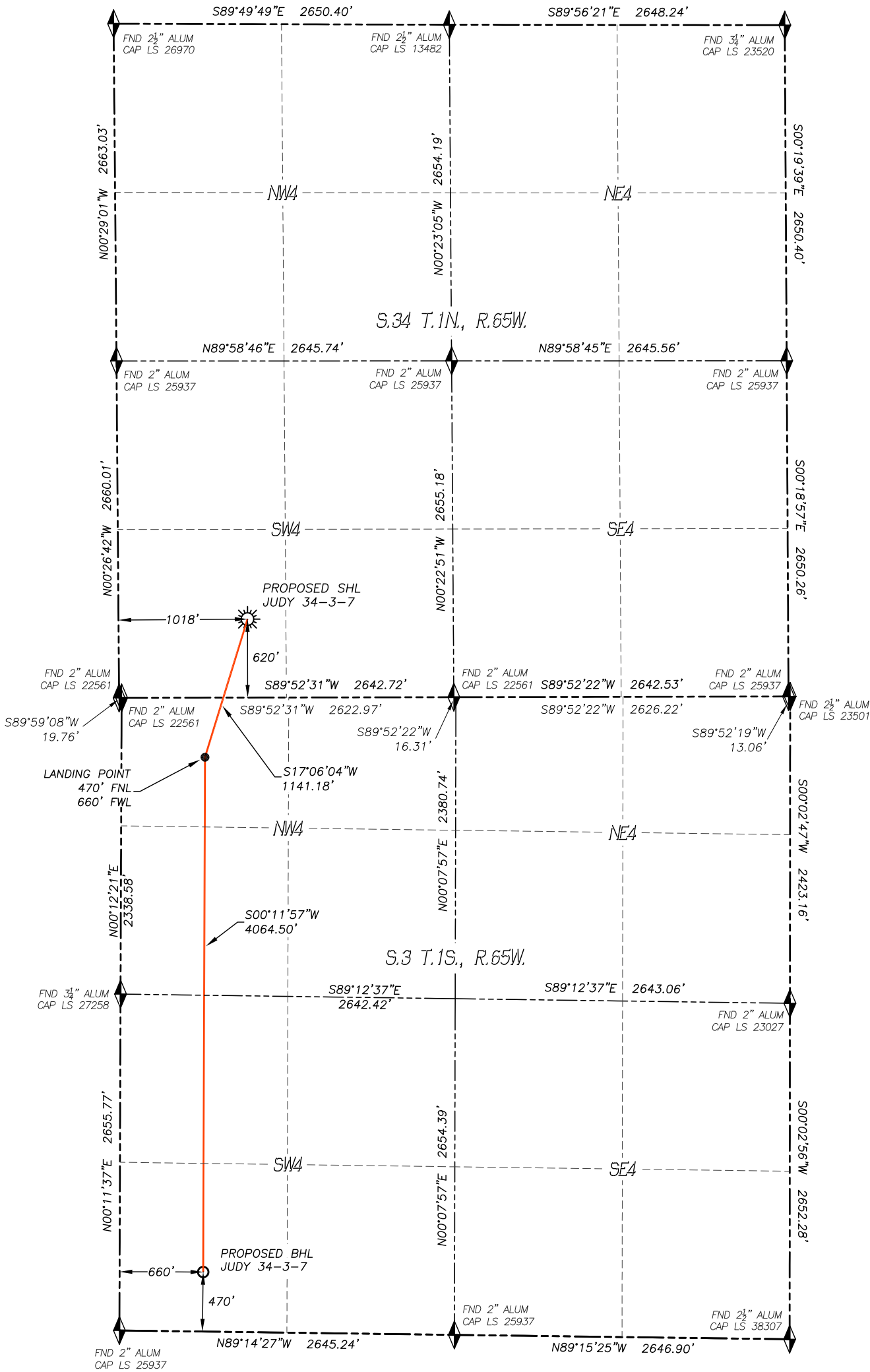


WELL LOCATION CERTIFICATE
JUDY 34-3-7

SECTION: 34
TOWNSHIP: 1N
RANGE: 65W

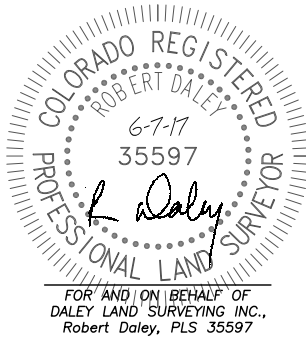


IN ACCORDANCE WITH A REQUEST FROM CONFLUENCE RESOURCES, DALEY LAND SURVEYING, INC. HAS DETERMINED THE SURFACE LOCATION OF THE JUDY 34-3-7 WELL TO BE 620' FSL, 1018' FWL, AS MEASURED AT NINETY (90) DEGREES FROM THE SECTION LINES OF SECTION 34, TOWNSHIP 1 NORTH, RANGE 65 WEST OF THE 6TH PRINCIPAL MERIDIAN, WELD COUNTY, AND THE BOTTOM HOLE LOCATION TO BE 470' FSL, 660' FWL, AS MEASURED AT NINETY (90) DEGREES FROM THE SECTION LINES OF SECTION 3, TOWNSHIP 1 SOUTH, RANGE 65 WEST, OF THE 6TH PRINCIPAL MERIDIAN, ADAMS COUNTY, COLORADO.

I HEREBY STATE THAT THIS WELL LOCATION CERTIFICATE WAS PREPARED BY ME OR UNDER MY DIRECT SUPERVISION, THAT THE WORK WAS COMPLETED ON 5/30/2017 FOR AND ON BEHALF OF CONFLUENCE RESOURCES, AND THAT THIS MAP DOES NOT REPRESENT A BOUNDARY SURVEY, IT IS NOT A LAND SURVEY PLAT OR AN IMPROVEMENT SURVEY PLAT AND IT IS NOT TO BE RELIED UPON FOR THE ESTABLISHMENT OF FENCE, BUILDING OR OTHER FUTURE IMPROVEMENT LINES.

NOTES:

- 1) BEARINGS FOR THIS MAP ARE ASSUMED AND BASED UPON GPS OBSERVATIONS MADE BETWEEN MONUMENTS LOCATED AT THE SOUTHWEST CORNER AND THE WEST QUARTER CORNER OF SECTION 34, T.1N., R.65W.
- 2) HORIZONTAL DATUM IS NAD83.
- 3) VERTICAL DATUM IS NAVD88 AND ORIGINATES FROM THE LOCAL C.O.R.S. NETWORK, UTILIZING THE GEOID12A MODEL.
- 4) SEE LOCATION DRAWING FOR VISIBLE IMPROVEMENTS WITHIN 500' OF PROPOSED DISTURBED AREA.
- 5) SURFACE USE: AGRICULTURAL.
- 6) INST. OPERATOR: KYLE DALEY



NEAREST CULTURAL ITEMS:

BUILDING: 1038'± SE
BUILDING UNIT: 1011'± S
HIGH OCC. BLD. UNIT: 5280'+
DES. OUTSIDE ACTIVITY AREA: 5280'+
PUBLIC ROAD: 604'± S
ABOVE GROUND UTILITY: 1187'± SW
RAILROAD: 5280'+
PROPERTY LINE: 303'± E

NAD 83 LATITUDE AND LONGITUDE

SURFACE LOCATION:

LATITUDE: N40.00225°
LONGITUDE: W104.65591°
ELEV: 5139'
PDOP: 1.2
QTR/QTR: SW4/SW4

LANDING POINT/TPZ:

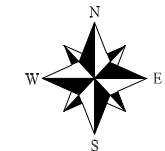
LATITUDE: N39.99926°
LONGITUDE: W104.65711°

BOTTOM HOLE:

LATITUDE: N39.98810°
LONGITUDE: W104.65717°

LEGEND

- FOUND MONUMENT
- CALCULATED POSITION
- PROPOSED WELL
- BOTTOM HOLE
- ABANDONED WELL
- EXISTING WELL



DALEY LAND
SURVEYING, INC.
PARKER, COLORADO
303.953.9841