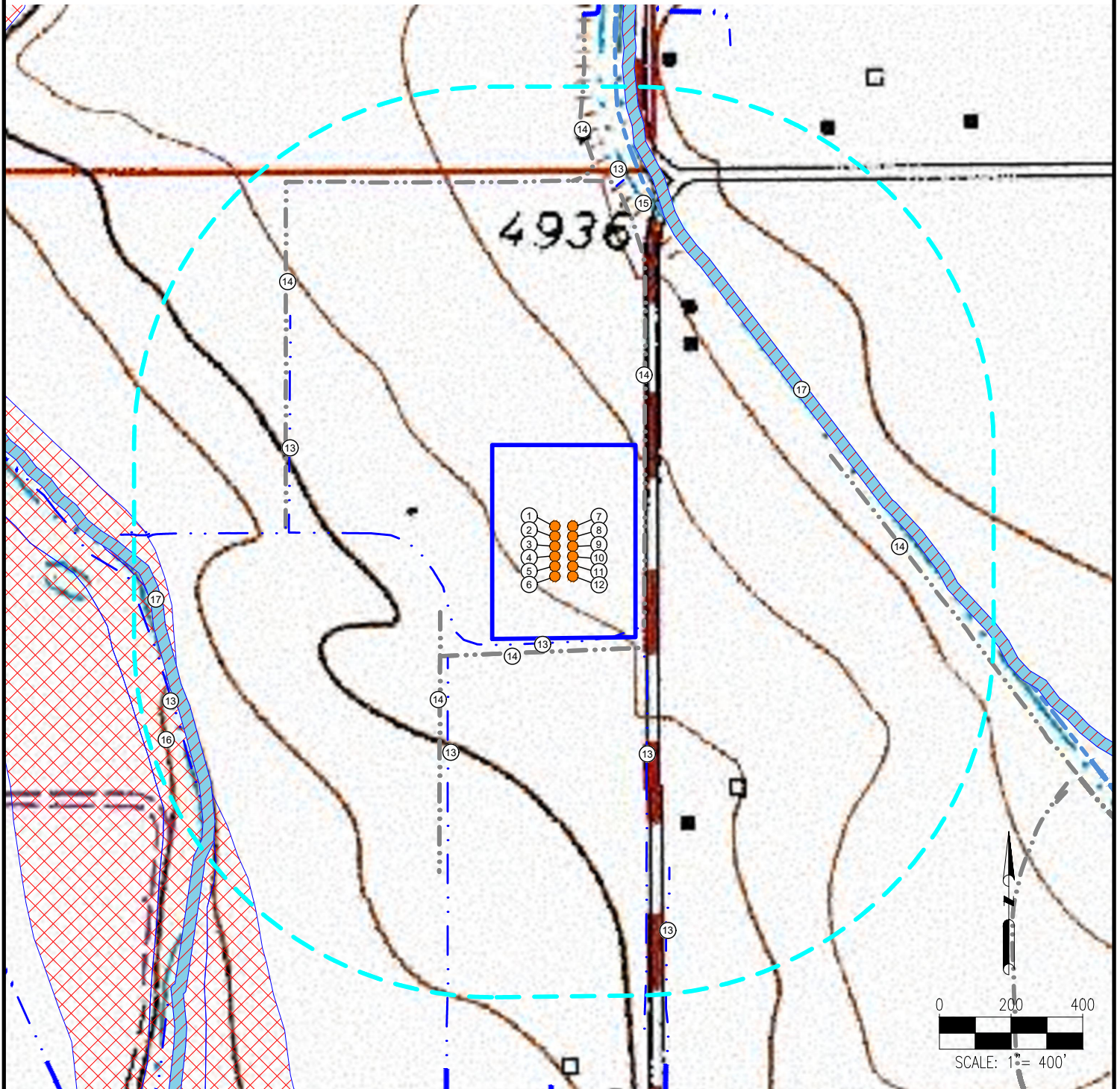


HERGERT 35-D PAD HYDROLOGY MAP



MEASUREMENTS ARE MADE FROM THE NEAREST EDGE OF THE DISTURBANCE AREA.

- | | | |
|----------------------------|------------------------------|--|
| 1. HERGERT NORTH 36W-15-1N | 7. HERGERT NORTH 36W-15-7N | 13. DITCHES ARE $\pm 0'$, $\pm 56'$ SE, $\pm 135'$ SW, $\pm 567'$ W, $\pm 650'$ SE, $\pm 723'$ N, $\pm 906'$ SW |
| 2. HERGERT NORTH 36W-15-2N | 8. HERGERT NORTH 36W-15-8N | 14. CONCRETE DITCHES ARE $\pm 30'$ S, $\pm 24'$ E, $\pm 145'$ W, $\pm 546'$ E, $\pm 576'$ W, $\pm 737'$ N |
| 3. HERGERT NORTH 36W-15-3C | 9. HERGERT NORTH 36W-15-9C | 15. LARIMER & WELD CANAL IS $\pm 470'$ NE |
| 4. HERGERT NORTH 36W-15-4N | 10. HERGERT NORTH 36W-15-10N | 16. FLOODPLAIN IS $\pm 884'$ W |
| 5. HERGERT NORTH 36W-15-5N | 11. HERGERT NORTH 36W-15-11N | 17. WETLANDS ARE $\pm 446'$ NE, $\pm 863'$ SW |
| 6. HERGERT NORTH 36W-15-6C | 12. HERGERT NORTH 36W-15-12C | |

LEGEND:

● = PROPOSED WELL

--- = DITCH
--- = CONCRETE DITCH
--- = CANAL

▨ = WETLAND
▭ = DISTURBANCE AREA
--- = 1000' RADIUS
▨ = FLOODPLAIN

DISCLAIMER:
THIS PLOT DOES NOT REPRESENT A MONUMENTED LAND SURVEY AND SHOULD NOT BE RELIED UPON TO DETERMINE BOUNDARY LINES, PROPERTY OWNERSHIP OR OTHER PROPERTY INTERESTS. PARCEL LINES, IF DEPICTED HAVE NOT BEEN FIELD VERIFIED AND MAY BE BASED UPON PUBLICLY AVAILABLE DATA THAT ALSO HAS NOT BEEN INDEPENDENTLY VERIFIED.

DATA SOURCE:
TOPO MAP: USGS
NHD: USGS
PUBLICLY AVAILABLE DATA SOURCES HAVE NOT BEEN INDEPENDENTLY VERIFIED BY ASCENT.